

# WALKER

## Illustrated Parts Manual

# H25



Beginning S/N: 124882  
Effective Date: 10.07.13  
P/N 2000-8

# KEY TO ABBREVIATIONS USED IN THIS MANUAL

<i>Abbreviation</i>	<i>What it Represents</i>
° (Dimension)	Degrees (Angle)
" (Dimension)	inches
(-)	Negative (Polarity)
(+)	Positive (Polarity)
AT	All-Terrain
CCW	Counter-clockwise
Conn	Connector
CW	Clockwise
D	Diameter
DC	Deck, Collection (number refers to size in inches)
DM	Deck, Mulching (number refers to size in inches)
DR	Deck, Rear Discharge (number refers to size in inches)
DS	Deck, Side Discharge (number refers to size in inches)
DU	Garlock (Bearing)
ESNA (Fastener)	Nylon Insert Locknut
FSC	Forward Speed Control
GA	Gauge
gal	gallon
GHS	Grass Handling System
GR (Fastener)	Grade
HD	Heavy Duty
HP	Horse Power
ID	Identification or Inside Diameter
L	Length
LH	Left Hand (orientated with operator on seat)
LP	Low Profile
mm (Dimension)	millimeters
MS (Fastener)	Machine Screw
NS (as part number)	Item is not sold by Walker Manufacturing
OD	Outside Diameter
oz	ounce
PFH (Fastener)	Phillips Flat Head
P/N	Part Number
PPH (Fastener)	Phillips Pan Head
PTH (Fastener)	Phillips Truss Head
PTO	Power Take-Off
QKS	Quick Slide
qt	quart
RH	Right Hand (orientated with operator on seat)
SAE (Fastener)	Society of Automotive Engineers
SBH (Fastener)	Socket Button Head (Bolt)
SD	Side Discharge
SFH (Fastener)	Slotted Flat Head
SHC (Fastener)	Socket Head Cap
SHL (Fastener)	Shoulder (Bolt)
SM (Fastener)	Sheet Metal (Screw)
S/N	Serial Number
Spg	Spring
SQH (Fastener)	Square Head
SS (Fastener)	Stainless Steel
ST (Fastener)	Self-Tapping (Screw)
Term	Terminal
V	Volts

NOTE: In some instances, combinations of abbreviations may be used (e.g. PPHMS - Phillips Pan Head Machine Screw).

Beginning S/N 124882

Effective Date 10-07-13

Use only genuine Walker® replacement parts.

# ILLUSTRATED PARTS LIST

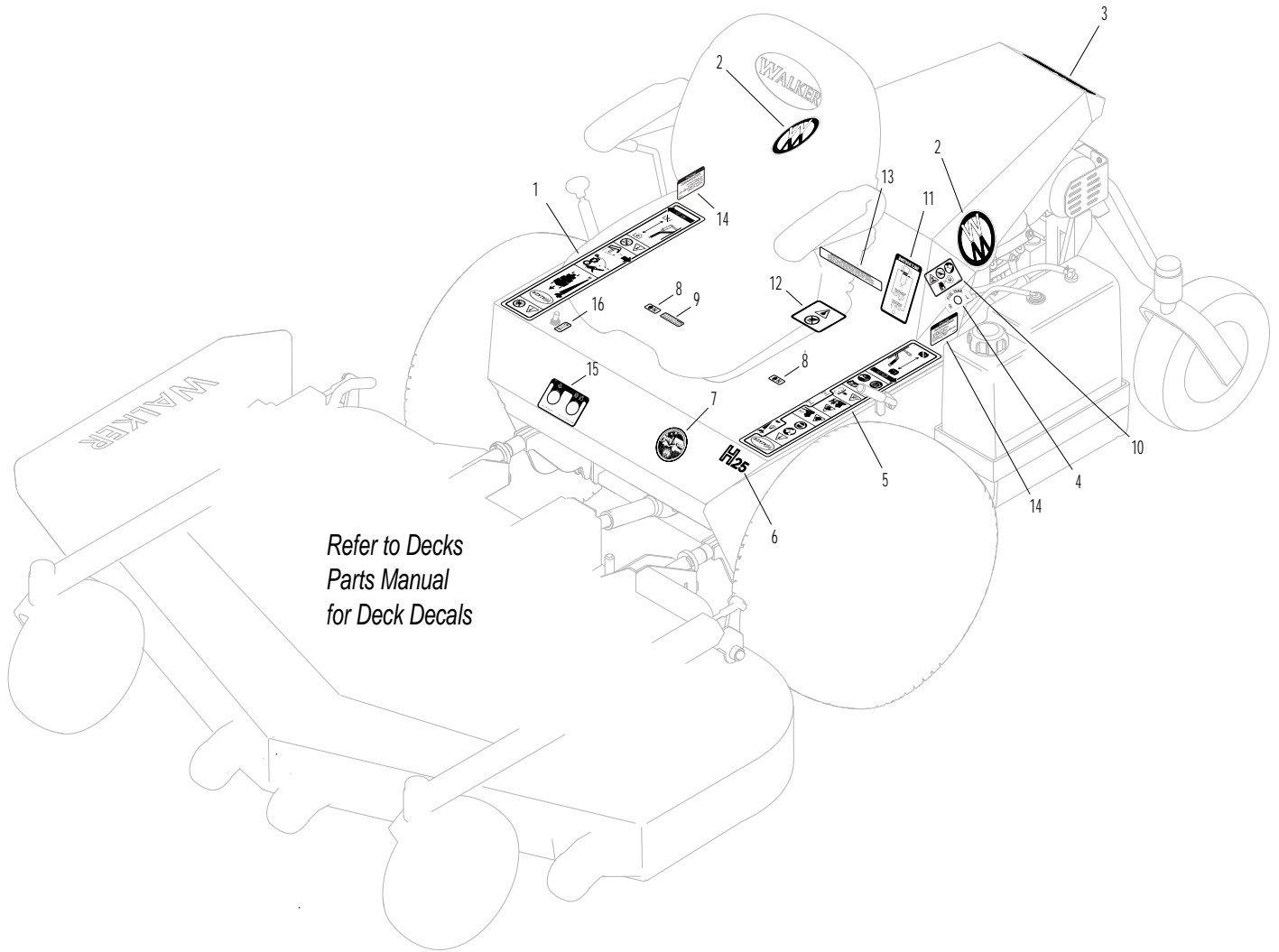
<i>Section of Tractor Covered</i>	<i>Page</i>	<i>Section of Tractor Covered</i>	<i>Page</i>
<hr/>		<hr/>	
<b>Decals</b>		<b>Electrical Components</b>	
Tractor Decals .....	2	Electrical Assembly .....	16
<b>Body / Chassis Assemblies</b>		<b>Maintenance</b>	
Body / Chassis Assembly .....	4	Lubrication Points .....	18
<b>Tractor Components</b>		Wiring Schematic.....	20
Main Component Power Transmission .....	6	<b>Warranty</b>	
Engine Group.....	8	Limited Warranty .....	21
Hydrostatic Ground Drive Assemblies			
(Prior to S/N 119965) .....	10		
(Beginning S/N 119965) .....	12		
Steering Control Assemblies.....	14		

# TRACTOR DECALS

ITEM NO.	PART NO.	DESCRIPTION	LOCATION	NO. REQ'D
<b>Walker Product and Operation Decals</b>				
1	2802-4	RH Fender	Body, RH Near Seat	1
2	5800-9	Decal, Walker Round (4-3/4")	Rear Body (one on each side)	2
3	5800-7	Decal, Walker (8")	Rear Body	1
4	2010-4	Fuel Transfer	Transfer Mount, LH	1
5	2802-6	LH Fender	Body, LH Near Seat	1
6	8821-4	Decal, H25	Body	1
7	5856-1	Made in USA	Body	1
8	9804-1	Axle Lockout	Chassis	2
9	2351-8	Decal, Belt Tensioner	Chassis	1
<b>Danger Decals Warning Decals Caution Decals</b>				
10	8600-12	Danger, Engine Exhaust	Engine, LH Side	1
11	2107-4	Decal, Belt Routing	Rear Body, Underside	1
12	8600-2	Danger, Rotating Components	Flex Coupling Guard	1
<b>Maintenance Decals</b>				
13	5855	Important, Engine Cooling	Engine	1
14	5082-5	Fuel Recommendations	Rear Body, LH Side	2
15	2807-6	Decal, Oil Pres./Head Temp.	Body	1
<b>Option Decals (applied only to units with corresponding Options installed)</b>				
16	5877	Lights, On-Off	Body	1

**NOTE:** All parts requiring decals are shipped with decals applied.

# TRACTOR DECALS



# BODY / CHASSIS ASSEMBLY

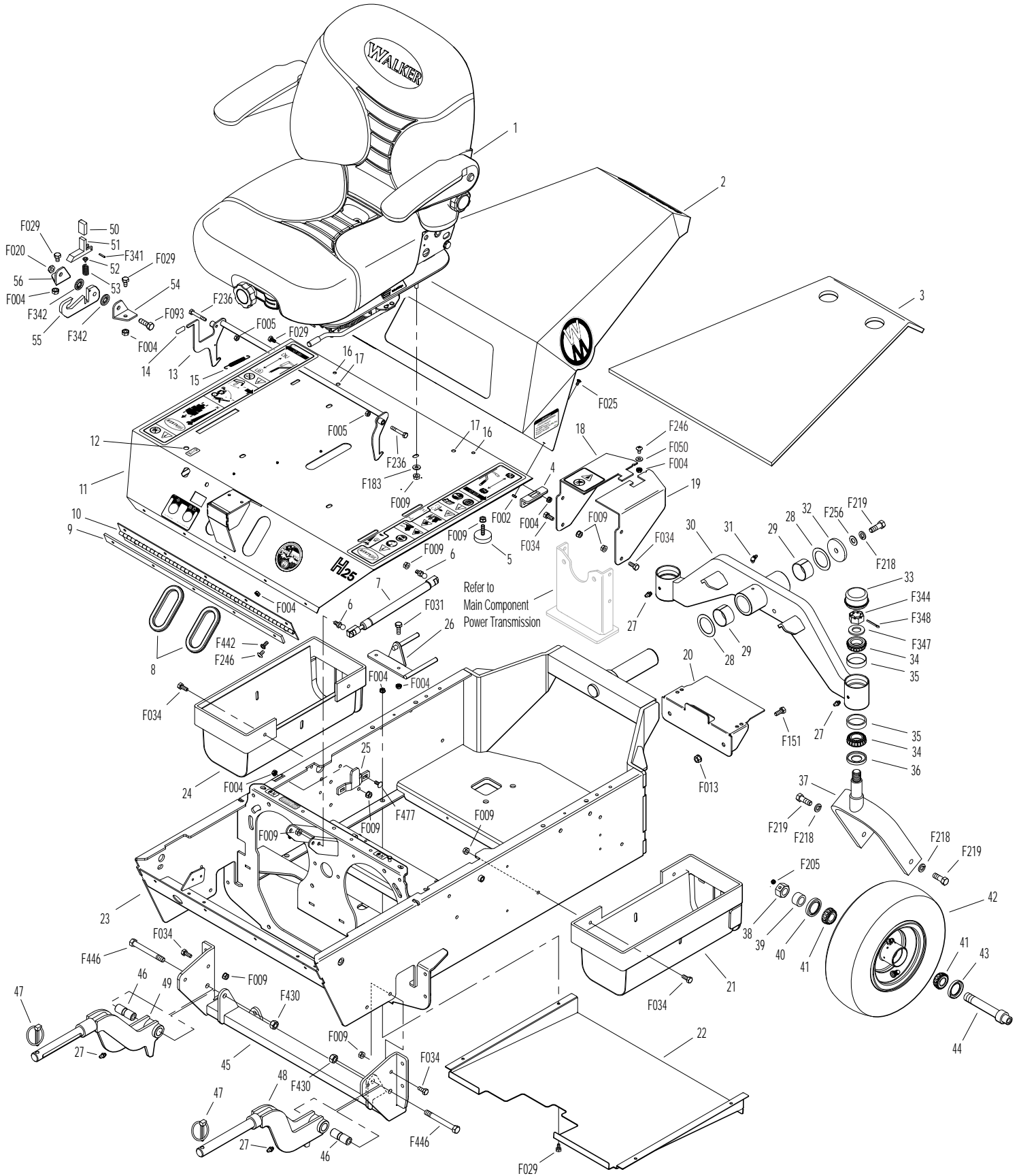
ITEM NO.	PART NO.	DESCRIPTION	NO. REQ'D	ITEM NO.	PART NO.	DESCRIPTION	NO. REQ'D
<b>Body &amp; Seat Assembly</b>				<b>Deck Support Arm &amp; Hitch Assemblies</b>			
1	2103-1	Seat	1	45	2300-9	Deck Arm Support Mount	1
2	2105-12	Rear Body (Includes Item # 3)	1	46	6840-1	Support Arm Bushing (2-1/16)	2
3	2190-1	Insulation Foam Pad	1	47	2775	Lynch Pin (5/16 x 1-1/4)	2
4	4102-1	Body Guide, Upper	1	48	2431	Deck Support Arm, LH (Includes Item # 27)	1
5	7844	Rubber Bumper (1.25 x .250)	2	49	2430	Deck Support Arm, RH (Includes Item # 27)	1
6	5146	10mm Ball Stud	2				
7	2145	Gas Spring	1	<b>Tilt-Up Latch Assembly*</b>			
8	5180	Edge Molding, Lever Opening	2	50	5847	Plastic Tip	1
9	2100-3	Front Body Doubler	1	51	5744-20	Spring Arm, Tilt-Up Latch	1
10	2504-4	Hinge (22.5)	1	52	5744-10	Spring Pivot Bushing	1
11	2100-4	Front Body (Includes Item # 5)	1	53	5744-15	Compression Spring (3/8 x 5/8)	1
12	5989-5	Dome Plug (7/16)	1	54	5744-13	Mount Angle, LH	1
13	2383	Body Latch Hook	1	55	5744-12	Hook, Tilt-Up Latch	1
14	7854	Plastic Tip, Red	1	56	5744-14	Mount Angle, RH	1
15	7222	Extension Spring (1/4 x 3)	1	<b>Fasteners</b>			
16	5989-4	Dome Plug (3/8)	2	F002	10-24 Keps Nut		5
17	5989-3	Dome Plug (5/16)	2	F004	1/4-20 Keps Nut		22
<b>Chassis Assembly</b>				F005	1/4-20 ESNA Nut		2
18	2010-12	Flex Coupling Guard, RH	1	F009	5/16-18 Whiz Locknut		20
19	2010-13	Flex Coupling Guard, LH	1	F013	3/8-16 Whiz Locknut		2
20	2390-1	Battery Pan	1	F020	5/16-18 ESNA Nut		1
21	2046-1	Gas Tank Mount, LH	1	F025	10-24 x 3/8 PPHMS		5
22	2301	Debris Shield (Includes Items # F004 & F029)	1	F029	1/4-20 x 1/2 Hex Bolt		8
23	2300-8	Chassis Frame	1	F031	1/4-20 x 5/8 Hex Bolt		2
24	2046	Gas Tank Mount	1	F034	5/16-18 x 3/4 Hex Bolt		12
25	4102-2	Body Guide, Lower	1	F050	1/4 SAE Washer		1
26	2325-8	Belt Guide	1	F093	5/16-18 x 1 Hex Bolt		1
<b>Tail Wheel Assembly</b>				F151	3/8-16 x 7/8 Hex Bolt		2
27	5830	Grease Fitting	4	F183	.312 x .700 x .074 Washer		4
28	2201-2	Fiberglide Thrust Washer	2	F205	5/16-18 x 1/4 Set Screw (Knurl Point)		2
29	2201-3	Fiberglide Bearing (1-5/8)	2	F218	7/16 Split Lock Washer		5
30	2300-6	Tail Wheel Pivot (Includes Items # 27 & 31)	1	F219	7/16-14 x 1-1/4 Hex Bolt		5
31	5830-3	Grease Fitting (45 Deg.)	1	F236	1/4-20 x 1-3/4 Hex Bolt		2
32	2201-4	Washer (2-1/4 x 7/16 x 1/4 Thk)	1	F246	1/4-20 x 1/2 PTHMS		5
33	8769-8	Dust Cap, Deck Caster	2	F256	7/16 SAE Washer		1
34	8769-6	Bearing Cone (1" ID)	4	F341	Coil Roll Pin (7/64 x 9/16)		1
35	8769-5	Bearing Cup (2 x 1-5/8)	4	F342	5/16 Conical Washer		2
36	8769-7	Seal	2	F344	3/4-16 Slotted Hex Nut		2
37	2770	Caster Wheel Fork	2	F347	3/4 SAE Washer		2
38	8039	Nut, Tail Wheel Axle	2	F348	1/8 x 1-1/2 Cotter Pin		2
39	8038-1	Spacer, Tail Wheel Axle (.750 x ID x 1.125 OD)	2	F430	7/16-20 ESNA Nut		2
40	8768-2	Seal, Reverse Lip	2	F442	1/4-20 x 5/8 PTHMS		5
41	8037	Bearing Cone (3/4 ID)	4	F446	7/16-20 x 3-1/2 Grd 8 Bolt		2
42	8035	Tail Wheel & Tire (13 x 5.00-6) (W/Bearing Race)	2	F477	1/4-20 x 5/8 Carriage Bolt		2
43	8037-1	Seal, Outer (1-3/4 x 1-1/8)	2	* Complete Tilt-Up Latch Assembly Kit available by ordering kit # 5747.			
44	7038	Tail Wheel Axle (3/4 x 5-9/16)	2				

Beginning S/N 124882

Effective Date 10-07-13

Use only genuine Walker® replacement parts.

# BODY / CHASSIS ASSEMBLY



Beginning S/N 124882  
 Effective Date 10-07-13  
 Use only genuine Walker® replacement parts.

# MAIN COMPONENT POWER TRANSMISSION

ITEM NO.	PART NO.	DESCRIPTION	NO. REQ'D	ITEM NO.	PART NO.	DESCRIPTION	NO. REQ'D
<b>PTO Drive Assembly</b>				<b>Fasteners</b>			
1	4850	Handle Grip, Black	1	F004		1/4-20 Keps Nut	5
2	2358-1	Clutch Lever (Includes Items # 1 & 3)	1	F008		5/16-24 Keps Nut	1
3	5830-4	Grease Fitting (90 Deg.)	3	F009		5/16-18 Whiz Locknut	15
4	4303-7	Clutch Actuator Bolt (5/16)	1	F010		5/16-24 ESNA Nut	1
5	2306-2	Oilite Flanged Bushing	2	F012		3/8-16 Keps Nut	1
6	5830	Grease Fitting	1	F013		3/8-16 Whiz Locknut	3
7	2325-7	Clutch Arm (Includes Items # 5 & 6)	1	F029		1/4-20 x 1/2 Hex Bolt	1
8	5221-1	Extension Spring (3/4 x 5)	1	F031		1/4-20 x 5/8 Hex Bolt	11
9	2358-11	Clutch Actuator	1	F034		5/16-18 x 3/4 Hex Bolt	9
10	5214-13	Ball Joint (3/8)	2	F035		5/16-18 x 1-1/4 Hex Bolt	1
11	2358-9	Clutch Pivot Base	1	F039		3/8-16 x 1-1/4 Hex Bolt	1
12	2358-8	Adjustor Brace	1	F051		3/8 SAE Washer	2
13	7775-6	Wire Lock Pin (2-1/2")	3	F058		1/4 Wave Spring Washer	6
14	2302-4	Right Hand Shoe	1	F060		AN960516 Washer	2
15	2302-7	Upper Shoe, LH	1	F061		1/4 Star Lock Washer	1
16	2302-3	Left Hand Shoe	1	F069		3/32 x 1/2 Cotter Pin	1
17	2349-7	Bearing Mount	1	F091		5/16-18 x 5/8 Hex Bolt	1
18	2406-5	Spacer	1	F104		1/4-20 x 3/4 PFH Bolt	2
19	2236-5	PTO Pulley (4.5/AAA)	1	F120		AN960416 Washer	8
20	2359-1	Brake Band / Guard Mount	1	F146		1/4-20 Jam Nut	1
21	7775-8	Wire Lock Pin (4")	1	F149		1/4 x 1/4 x 1-1/2 Key	1
22	2302-5	PTO Shoe	1	F168		5/16 Split Lock Washer	1
23	7275-9	Quick Coupler Installation Tool	**	F170		5/16 x 1 x 7/64 Flat Washer (Zinc Plate)	1
24	7275-16	Universal Joint Tube Assembly / Spline	1	F171		5/16-18 x 3/8 Set Screw	1
25	2274-10	PTO Drive Shaft Assembly	*	F178		1/4 x 1 Fender Washer	1
26	2302-6	Shoe Mount, LH	2	F182		1/4 x 5/8 x 1/8 Washer	1
27	2358-7	Clutch / Pivot Stop	1	F183		.312 x .700 x .074 Washer	4
28	7523-2	Clevis Pin W/Hole (1/4 x 5/8)	1	F211		1/4-20 x 7/8 Hex Bolt	1
29	4359-2	Brake Band Link, Rear	1	F217		7/16-14 Hex Nut	2
30	8304	Brake Band (14-1/2)	1	F218		7/16 Split Lock Washer	2
31	4359-1	Brake Band Link, Front	1	F219		7/16-14 x 1-1/4 Hex Bolt	2
32	2410-2	Drive Shaft	1	F241		.375 x .875 x .10 Washer	1
33	2265	Bearing (20mm)	4	F255		5/16-18 x 1-1/2 Hex Bolt	5
34	2406-7	Pivot Shaft Spacer	1	F298		3/8-24 Jam Nut	2
35	2236-1	Idler Pulley (4.5/AAA)	2	F350		1/4-20 LP Nylock	9
36	2230	Engine PTO Belt / Set (3)	1	F389		3/8-16 x 2-3/4 Hex Bolt	1
37	2236-6	Pulley (4/AAA) (Includes Items # F149 & F171)	1	F431		1/4-20 x 3-1/2 Hex Bolt	1
				F435		1/4 x 1/4 x 1-1/4 Key	2
38	2236-4	Idler Pulley Shaft	1	F450		Washer 5/8 x 1-3/4 x 1/4	1
39	7201-3	Fiberglide Bearing	2	F452		5/8-18 Nylon Locknut	1
40	7201-9	Inner Race	1	F473		5/16-18 x 5 Hex Bolt	1
41	2359-2	Clutch Engagement (Includes Items # 3 & 39)	1	F476		3/8-16 x 6-1/2 Hex Bolt	1
				F484		Washer .380 ID x 1.0 OD x .120	2
42	2349-6	Flanged Bearing	1				
43	4302-2	Shoe Mount	1				
44	2358-12	Fiberglide Bushing	1				
45	7201-2	Fiberglide Bearing (1/2")	1				
46	7377	Plastic Washer (1 x .438 x .025)	2				
47	7378	Pivot Bearing (7/16 x 9/16)	1				
48	5214-2	Ball Joint (5/16-24) (Nylon Lined)	1				
49	7226	Compression Spring (3/4 x 2-1/2)	1				
50	7380	Knuckle Joint	1				

\* Service Part Only

\*\* The Quick Coupler Installation Tool is used to assist the installation of the Quick Coupler Tube and PTO Shaft connection by holding the disconnect ring in the retracted position when joined to the tractor spline shaft on the PTO Drive Shaft.

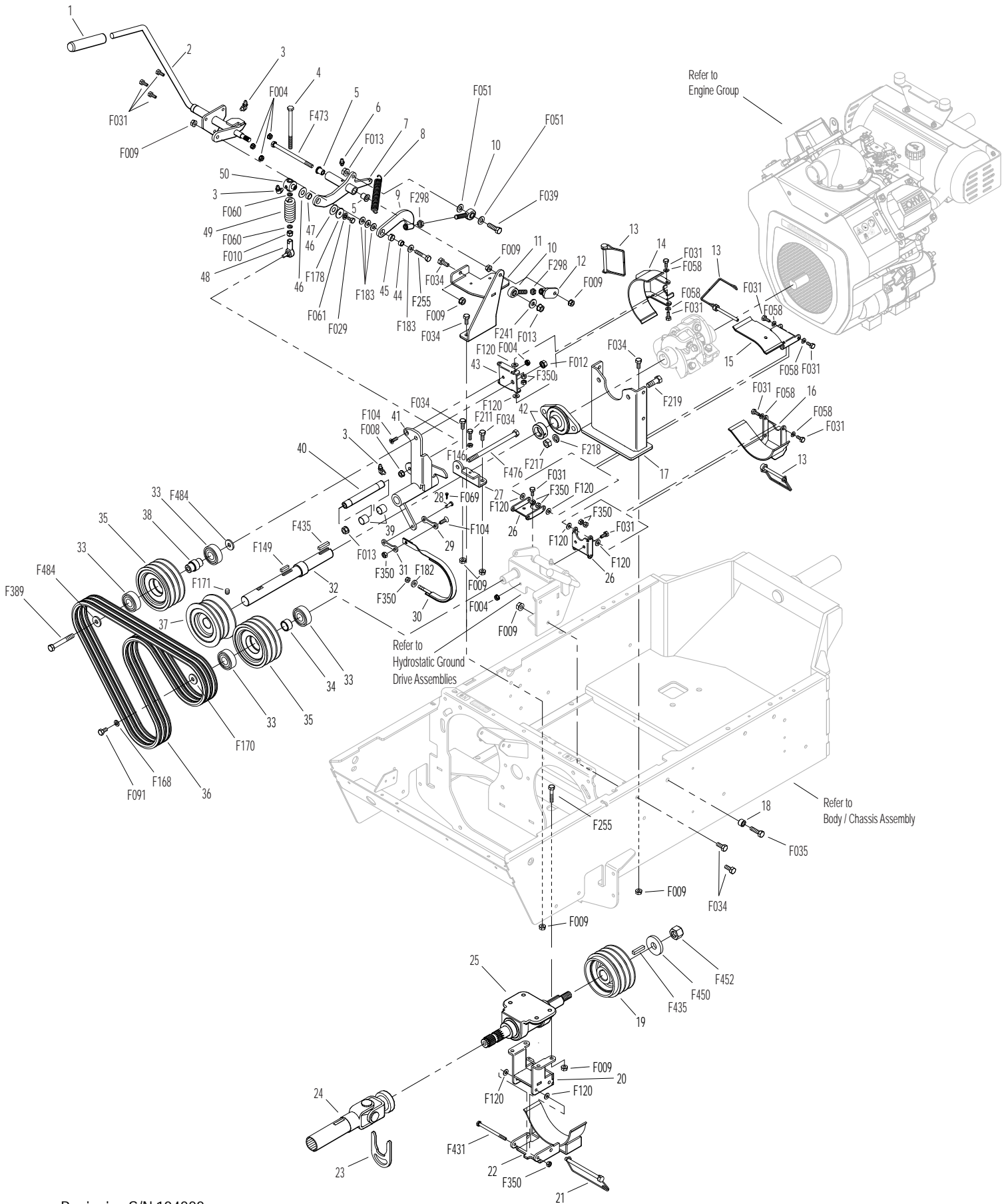
Beginning S/N 124882

Effective Date 10-07-13

Use only genuine Walker® replacement parts.



# MAIN COMPONENT POWER TRANSMISSION



Beginning S/N 124882  
 Effective Date 10-07-13  
 Use only genuine Walker® replacement parts.

# ENGINE GROUP

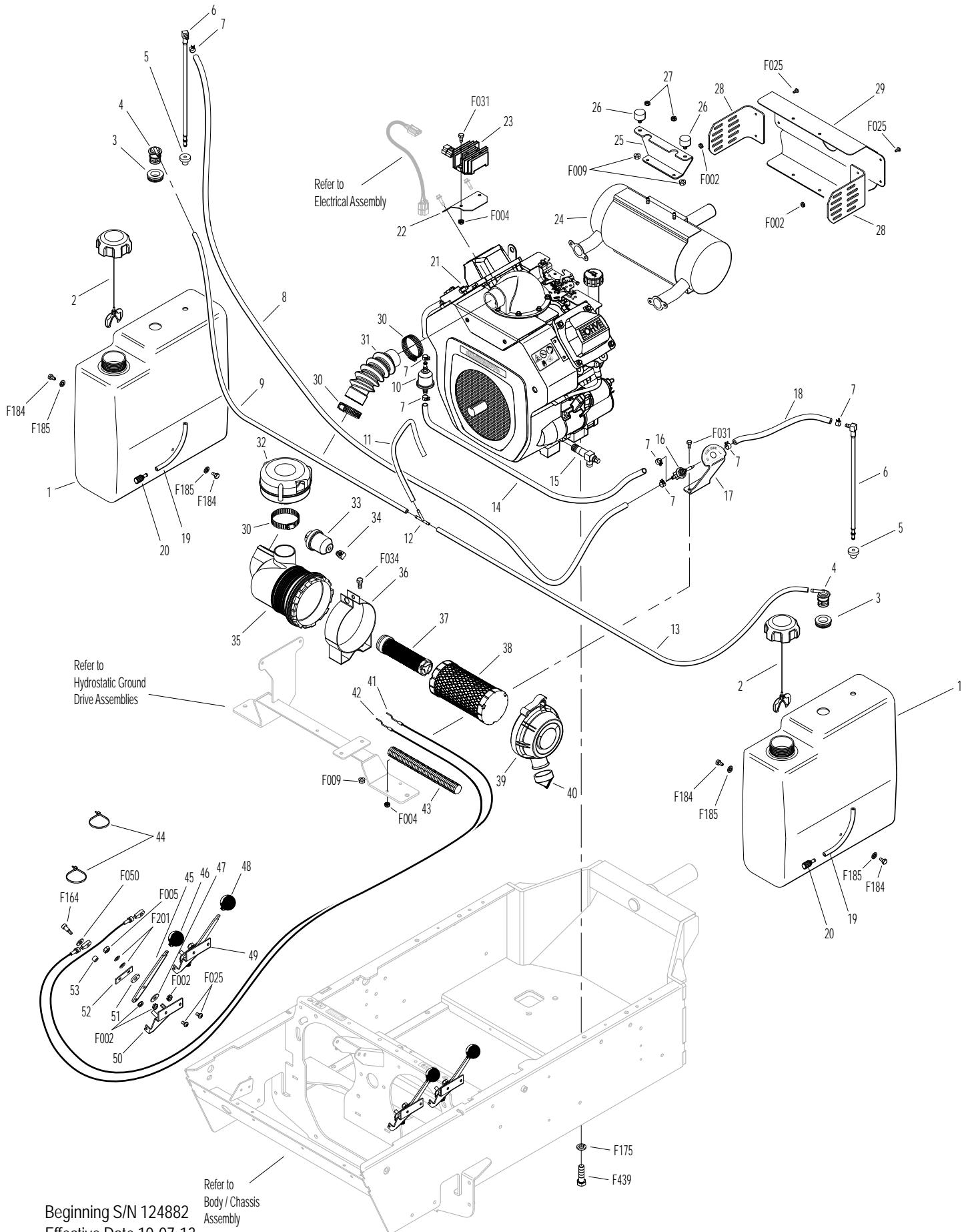
ITEM NO.	PART NO.	DESCRIPTION	NO. REQ'D	ITEM NO.	PART NO.	DESCRIPTION	NO. REQ'D
<b>Fuel Tank Assembly</b>				<b>Choke and Throttle Assemblies</b>			
1	8046-3	Fuel Tank, 4.7 Gallon, Gas (Includes Items # 5 & 7)	2	41	2109-4	Control Cable (62")	1
2	5082-4	2-1/4 Ratchet Fuel Cap (EPA)	2	42	2108-4	Control Cable (68")	1
3	5977-7	Roll Over Grommet (.900 x 1-1/2)	2	43	8123-3	Insultherm (3/8 x 10)	1
4	8043-8	Roll Over Valve	2	44	5975-3	Cable Tie (50# x 7")	2
5	5083-1	Bushing, Rubber (Fits 5083)	2	45	5108-1	Control Lever, Throttle / Choke	2
6	5083-8	Tank Tube (13")	2	46	5108-5	Throttle Control Knob, Red	1
7	5879-3	Hose Clamp (1/2)	7	47	5108-11	Friction Washer (.062)	2
8	M111	Fuel Line (1/4 x 24")	1**	48	5108-6	Choke Control Knob, Black	1
9	M113	Fuel Line (3/16 x 12")	1**	49	7108	Control Assembly (Includes Items # 45, 47, 50-52 & F201)	2
10	5020	Fuel Filter	1		2108-3	Throttle Control and Cable Assembly (Includes Items # 41, 45-47, 50-53, F002, F005, F050, F164 & F201)	*
11	M113	Fuel Line (3/16 x 9")	1**		2109-3	Choke Control and Cable Assembly (Includes Items # 42, 45, 47, 48, 50-53, F002, F005, F050, F164 & F201)	*
12	8043-6	Connector "Y"	1				
13	M113	Fuel Line (3/16 x 31")	1**	50	5108-8	Control Bracket	2
14	M111	Fuel Line (1/4 x 26-1/2")	1**	51	5108-10	Friction Washer (.125)	2
15	4010-1	Drain Valve 3/8-18 NPTF	1	52	5108-7	Control Lock Tab	2
16	2010-3	Fuel Valve	1	53	5172	Bearing, Delrin (.255 ID x .379 OD x .250)	2
17	2010-14	Fuel Transfer Mount	1	<b>Fasteners</b>			
18	M111	Fuel Line (1/4 x 11")	1**	F002	10-24 Keps Nut		10
19	5086-7	Hose (1/4 x 6)	2	F004	1/4-20 Keps Nut		4
20	5020-2	Fuel Filter, In Tank	2	F005	1/4-20 ESNA Nut		2
<b>Engine Assembly</b>					F009	5/16-18 Whiz Locknut	4
21	NS	25 HP Engine (Kohler)	*	F025	10-24 x 3/8 PPHMS		8
22	8016-4	Regulator Mount	1	F031	1/4-20 x 5/8 Hex Bolt		4
23	NS	Rectifier	*	F034	5/16-18 x 3/4 Hex Bolt		2
24	NS	Muffler	*	F050	1/4 SAE Washer		2
25	2104-1	Body Support	1	F164	10-24 x 1/4 x 3/8 SHL Bolt		2
26	4845	Rubber Bumper (1.0 x .625)	2	F175	1/2 Split Lock Washer		4
27	NS	Kohler Nut	*	F184	1/4-20 x 1/2 Hex Bolt, SS		4
28	2013-4	Shield Side	2	F185	1/4 Internal Star Lock Washer, SS		4
29	2013-3	Muffler Heat Shield	1	F201	1/4 Belleville Spring Washer		4
<b>Precleaner Assembly</b>					F439	1/2-13 x 1-3/4 Hex Bolt	4
30	7840	Hose Clamp (1-1/4 to 1-3/4)	3	* Service Part Only			
31	2012-1	Air Intake Hose	1	** <b>Required hose specifications:</b>			
32	7026-2	Remote Precleaner	1	M111 - 1/4" ID fuel/oil/vapor hose (Gates 4219-0103 or equivalent)			
33	5091-2	Air Flow Indicator (Vacuum 10" H2O)	1	M113 - 3/16" ID fuel/oil/vapor hose (Gates 4219-0093 or equivalent)			
34	5091-9	Street Elbow 90° (1/8 x 1/8)	1				
35	2088-10	Air Cleaner Assembly (Includes Items # 33, 35-39)	*				
36	2088-1	Air Cleaner Band	1				
37	2090-3	Safety Filter Insert	1				
38	2090-1	Air Cleaner Cartridge	1				
39	2088-2	Air Cleaner Cap	1				
40	2090-2	Vacuator Valve	1				

Beginning S/N 124882

Effective Date 10-07-13

Use only genuine Walker® replacement parts.

# ENGINE GROUP



Beginning S/N 124882  
 Effective Date 10-07-13  
 Use only genuine Walker® replacement parts.

# HYDROSTATIC GROUND DRIVE ASSEMBLIES (PRIOR TO S/N 119965)

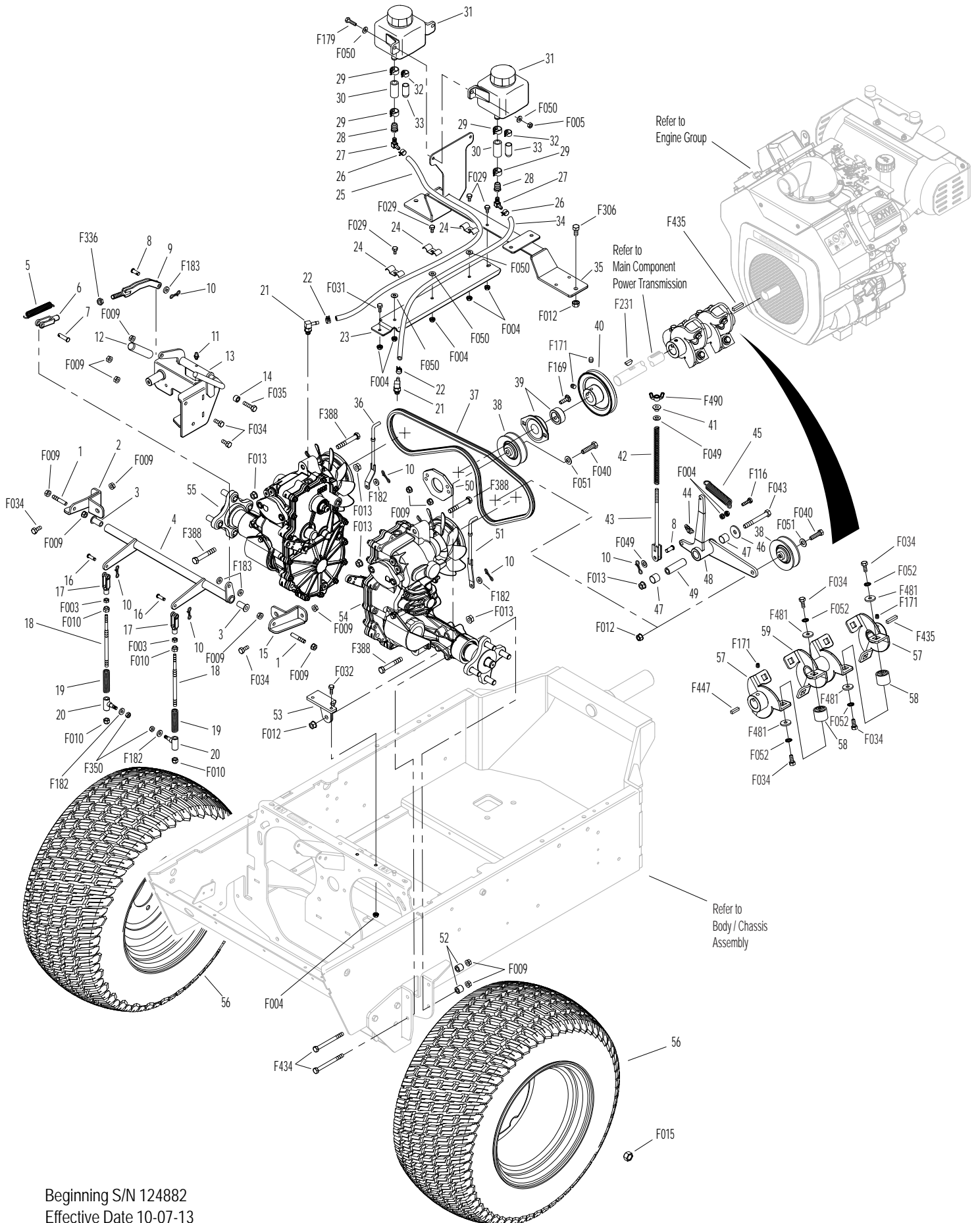
ITEM NO.	PART NO.	DESCRIPTION	NO. REQ'D	ITEM NO.	PART NO.	DESCRIPTION	NO. REQ'D
<b>Parking Brake Assembly</b>				49	7201-5	Inner Race (2-1/4)	1
1	2358-6	5/16-18 x 1-3/4 Stud	2	50	2300-5	Spring Mount Plate	1
2	2300-2	Parking Brake Hydro Mount, RH	1	51	2028-3	Hydro Lockout Rod, LH	1
3	5103-2	Pivot Bushing (5/16 ID)	2	52	9430-1	Spacer Tube	4
4	2406-3	Parking Brake Actuator Tube	1	53	2349-9	Idler Mount	1
5	5222	Extension Spring (1/2 x 3-1/4)	1	54	2025-13	Hydro-Gear ZT3400, LH	1
6	2280	Clevis (3/8)	1	55	2026-13	Hydro-Gear ZT3400, RH	1
7	2406-4	Clevis Pin (5/16 x 1-1/8)	1	<b>Wheel Assembly</b>			
8	8655-4	Clevis Pin (5/16 x 3/4)	2	56	2071	Wheel & Tire (22 x 10.50-12)	2
9	2406-1	Brake Actuator Pull	1	<b>PTO Coupler</b>			
10	4407-4	Bow Tie Cotter Pin	6	57	2351-3	Flex Coupler Half (Includes Items # F171 & F435)	2
11	5830	Grease Fitting	1	58	2351-1	Rubber Iso Coupler	6
12	7406-1	Handle Grip, Red	1	59	2351-7	Inner Flex Coupler Half (1/4)	1
13	2406-9	Parking Brake Lever Idler Mount (Includes Items # 11 & 12)	1	<b>Fasteners</b>			
14	2406-5	Spacer	1	F003	1/4-28 Hex Nut		2
15	2300-1	Parking Brake Hydro Mount, LH	1	F004	1/4-20 Keps Nut		9
16	5281-5	Clevis Pin (1/4 x 0.80)	2	F005	1/4-20 ESNA Nut		2
17	5280	Clevis (1/4)	2	F009	5/16-18 Whiz Locknut		15
18	2406-2	Parking Brake Rod	2	F010	5/16-24 ESNA Nut		4
19	5665-1	Compression Spring (2-1/2)	2	F012	3/8-16 Keps Nut		4
20	5463	Steering Lever Actuator	2	F013	3/8-16 Whiz Locknut		5
<b>Transaxle Reservoir Assemblies</b>				F015	1/2-20 Wheel Lug Nut		8
21	2025-17	Straight Thread Hose Fitting	2	F029	1/4-20 x 1/2 Hex Bolt		4
22	5879-4	Hose Clamp (7/16)	2	F031	1/4-20 x 5/8 Hex Bolt		1
23	2025-14	Hose Channel	1	F032	1/4-20 x 3/4 Hex Bolt		2
24	6836-1	Clamp, Double (1/2 x 1/2)	3	F034	5/16-18 x 3/4 Hex Bolt		16
25	5086-14	Hose (1/4 x 26-1/4")	1	F035	5/16-18 x 1-1/4 Hex Bolt		1
26	5879-3	Hose Clamp (1/2)	2	F040	3/8-16 x 1-1/2 Hex Bolt		2
27	4024-1	Oil Expansion Reservoir Elbow	2	F043	3/8-16 x 3 Hex Bolt		1
28	2010-9	Hose Reducer (1/2-1/4)	2	F049	5/16 SAE Washer		2
29	5879-8	Hose Clamp (13/16)	4	F050	1/4 SAE Washer		7
30	5087-1	Hose (1/2 x 1-3/4)	2	F051	3/8 SAE Washer		2
31	2025-1	Oil Expansion Reservoir	2	F052	5/16 Ext. Star Lock Washer		12
32	5879-7	Hose Clamp (5/8)	2	F116	1/4-20 x 1-1/4 Hex Bolt		1
33	2025-8	Reservoir Bottom Caps	2	F169	5/16-18 x 1 Carriage Bolt		2
34	5086-15	Hose (1/4 x 23)	1	F171	5/16-18 x 3/8 Set Screw		6
35	2025	Reservoir Bottle Mount	1	F179	1/4-20 x 1 Hex Bolt		2
<b>Ground Drive Assemblies</b>				F182	1/4 x 5/8 x 1/8 Washer		4
36	2028-4	Hydro Lockout Rod, RH	1	F183	.312 x .700 x .074 Washer		3
37	2248-1	Ground Drive Belt	1	F231	1/4 x 3/4 Woodruff Key (#806)		1
38	4245	Idler Pulley (3/A)	2	F306	3/8-16 x 3/4 Hex Bolt		2
39	4349-6	Flanged Bearing (1")	1	F336	3/8-16 Jam Nut		1
40	2240-2	Drive Pulley (Includes Item # F171)	1	F350	1/4-20 LP Nylock		2
41	2724-8	Tensioner Guide	1	F388	3/8-16 x 2-1/2 Hex Bolt		4
42	7223-2	Compression Spring (1/2 x 6-1/2")	1	F434	5/16-18 x 3-1/2 Hex Bolt		4
43	2349-8	Tensioner Stop Rod	1	F435	1/4 x 1/4 x 1-1/4 Key		1
44	5830-3	Grease Fitting (45 Deg.)	1	F447	1/4 x 1/4 x 1 Key		1
45	5221-1	Extension Spring (3/4 x 5)	1	F481	Washer 5/16 x 7/8 x .125		12
46	5841	Retainer Washer (3/8 x 1-1/4)	1	F490	5/16-18 ESNA Wing Nut		1
47	7201-3	Fiberglide Bearing	2				
48	2349-5	Hydro Idler Arm (Includes Items # 44 & 47)	1				

Beginning S/N 124882

Effective Date 10-07-13

Use only genuine Walker® replacement parts.

# HYDROSTATIC GROUND DRIVE ASSEMBLIES (PRIOR TO S/N 119965)



Beginning S/N 124882  
 Effective Date 10-07-13  
 Use only genuine Walker® replacement parts.

# HYDROSTATIC GROUND DRIVE ASSEMBLIES (BEGINNING S/N 119965)

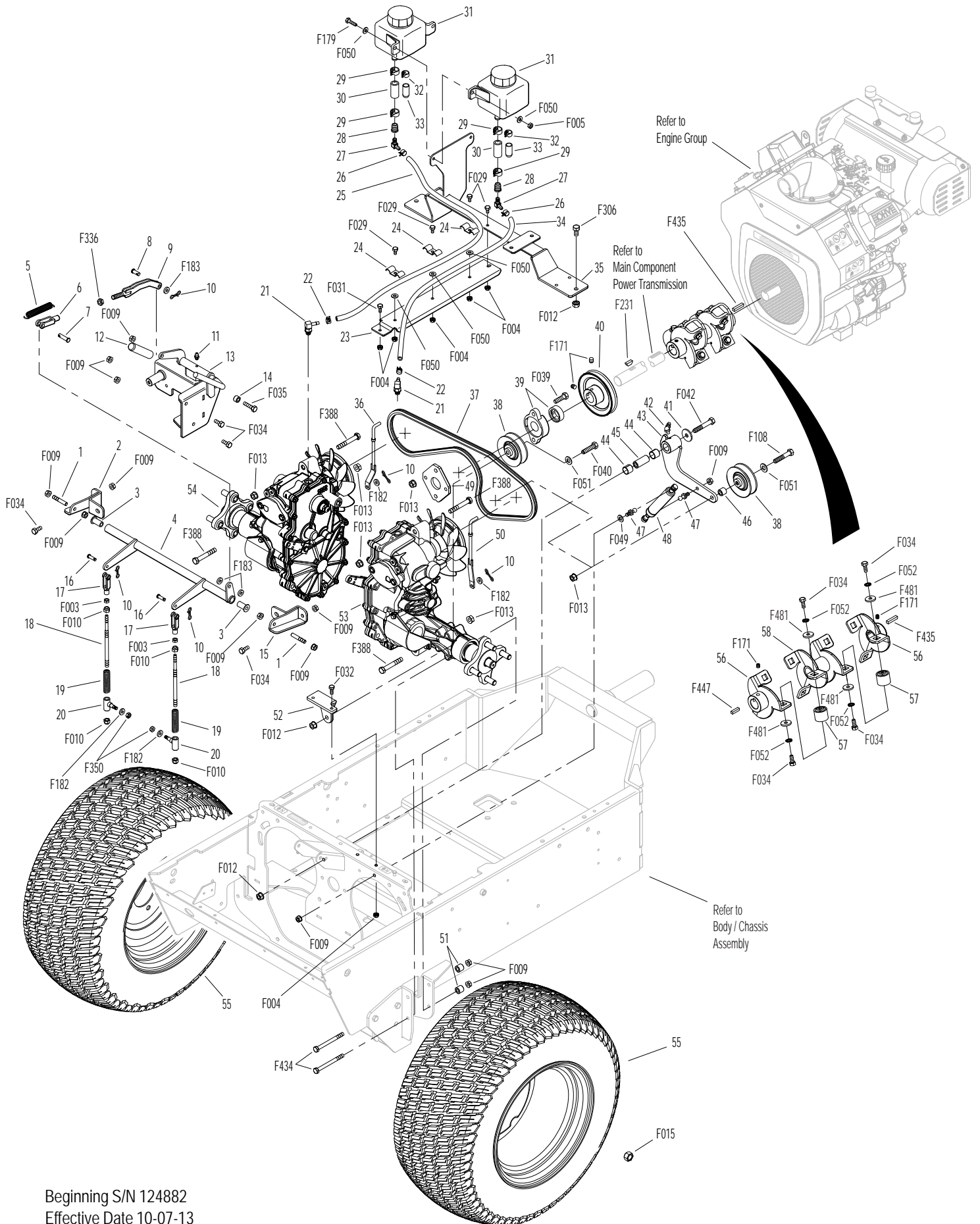
ITEM NO.	PART NO.	DESCRIPTION	NO. REQ'D	ITEM NO.	PART NO.	DESCRIPTION	NO. REQ'D
<b>Parking Brake Assembly</b>				48	2215-6	Pressure Dampener	1
1	2358-6	5/16-18 x 1-3/4 Stud	2	49	2300-7	Spring Mount Plate	1
2	2300-2	Parking Brake Hydro Mount, RH	1	50	2028-3	Hydro Lockout Rod, LH	1
3	5103-2	Pivot Bushing (5/16 ID)	2	51	9430-1	Spacer Tube	4
4	2406-3	Parking Brake Actuator Tube	1	52	2349-9	Idler Mount	1
5	5222	Extension Spring (1/2 x 3-1/4)	1	53	2025-13	Hydro-Gear ZT3400, LH	1
6	2280	Clevis (3/8)	1	54	2026-13	Hydro-Gear ZT3400, RH	1
7	2406-4	Clevis Pin (5/16 x 1-1/8)	1	<b>Wheel Assembly</b>			
8	8655-4	Clevis Pin (5/16 x 3/4)	1	55	2071	Wheel & Tire (22 x 10.50-12)	2
9	2406-1	Brake Actuator Pull	1	<b>PTO Coupler</b>			
10	4407-4	Bow Tie Cotter Pin	5	56	2351-3	Flex Coupler Half (Includes Items # F171 & F435)	2
11	5830	Grease Fitting	1	57	2351-1	Rubber Iso Coupler	6
12	7406-1	Handle Grip, Red	1	58	2351-7	Inner Flex Coupler Half (1/4)	1
13	2406-9	Parking Brake Lever Idler Mount (Includes Items # 11 & 12)	1	<b>Fasteners</b>			
14	2406-5	Spacer	1	F003	1/4-28 Hex Nut		2
15	2300-1	Parking Brake Hydro Mount, LH	1	F004	1/4-20 Keps Nut		7
16	5281-5	Clevis Pin (1/4 x 0.80)	2	F005	1/4-20 ESNA Nut		2
17	5280	Clevis (1/4)	2	F009	5/16-18 Whiz Locknut		15
18	2406-2	Parking Brake Rod	2	F010	5/16-24 ESNA Nut		4
19	5665-1	Compression Spring (2-1/2)	2	F012	3/8-16 Keps Nut		4
20	5463	Steering Lever Actuator	2	F013	3/8-16 Whiz Locknut		7
<b>Transaxle Reservoir Assemblies</b>				F015	1/2-20 Wheel Lug Nut		8
21	2025-17	Straight Thread Hose Fitting	2	F029	1/4-20 x 1/2 Hex Bolt		4
22	5879-4	Hose Clamp (7/16)	2	F031	1/4-20 x 5/8 Hex Bolt		1
23	2025-14	Hose Channel	1	F032	1/4-20 x 3/4 Hex Bolt		2
24	6836-1	Clamp, Double (1/2 x 1/2)	3	F034	5/16-18 x 3/4 Hex Bolt		16
25	5086-14	Hose (1/4 x 26-1/4")	1	F035	5/16-18 x 1-1/4 Hex Bolt		1
26	5879-3	Hose Clamp (1/2)	2	F039	3/8-16 x 1-1/4 Hex Bolt		2
27	4024-1	Oil Expansion Reservoir Elbow	2	F040	3/8-16 x 1-1/2 Hex Bolt		1
28	2010-9	Hose Reducer (1/2-1/4)	2	F042	3/8-16 x 2-1/4 Hex Bolt		1
29	5879-8	Hose Clamp (13/16)	4	F049	5/16 SAE Washer		1
30	5087-1	Hose (1/2 x 1-3/4)	2	F050	1/4 SAE Washer		7
31	2025-1	Oil Expansion Reservoir	2	F051	3/8 SAE Washer		2
32	5879-7	Hose Clamp (5/8)	2	F052	5/16 Ext. Star Lock Washer		12
33	2025-8	Reservoir Bottom Caps	2	F108	3/8-16 x 2 Hex Bolt		1
34	5086-15	Hose (1/4 x 23)	1	F171	5/16-18 x 3/8 Set Screw		6
35	2025	Reservoir Bottle Mount	1	F179	1/4-20 x 1 Hex Bolt		2
<b>Ground Drive Assemblies</b>				F182	1/4 x 5/8 x 1/8 Washer		4
36	2028-4	Hydro Lockout Rod, RH	1	F183	.312 x .700 x .074 Washer		3
37	2248-1	Ground Drive Belt	1	F231	1/4 x 3/4 Woodruff Key (#806)		1
38	4245	Idler Pulley (3/A)	2	F306	3/8-16 x 3/4 Hex Bolt		2
39	4349-9	Flanged Bearing (1")	1	F336	3/8-16 Jam Nut		1
40	2240-2	Drive Pulley (Includes Item # F171)	1	F350	1/4-20 LP Nylock		2
41	5841	Retainer Washer (3/8 x 1-1/4)	1	F388	3/8-16 x 2-1/2 Hex Bolt		4
42	5830-3	Grease Fitting (45 Deg.)	1	F434	5/16-18 x 3-1/2 Hex Bolt		4
43	2349-14	Transmission Belt Tensioner (Includes Items # 42 & 44)	1	F435	1/4 x 1/4 x 1-1/4 Key		1
44	7201-3	Fiberglide Bearing	2	F447	1/4 x 1/4 x 1 Key		1
45	7201-4	Inner Race (1-1/2)	1	F481	Washer 5/16 x 7/8 x .125		12
46	6325-3	Spacer Bushing (9/16)	1				
47	5146	10mm Ball Stud	2				

Beginning S/N 124882

Effective Date 10-07-13

Use only genuine Walker® replacement parts.

# HYDROSTATIC GROUND DRIVE ASSEMBLIES (BEGINNING S/N 119965)



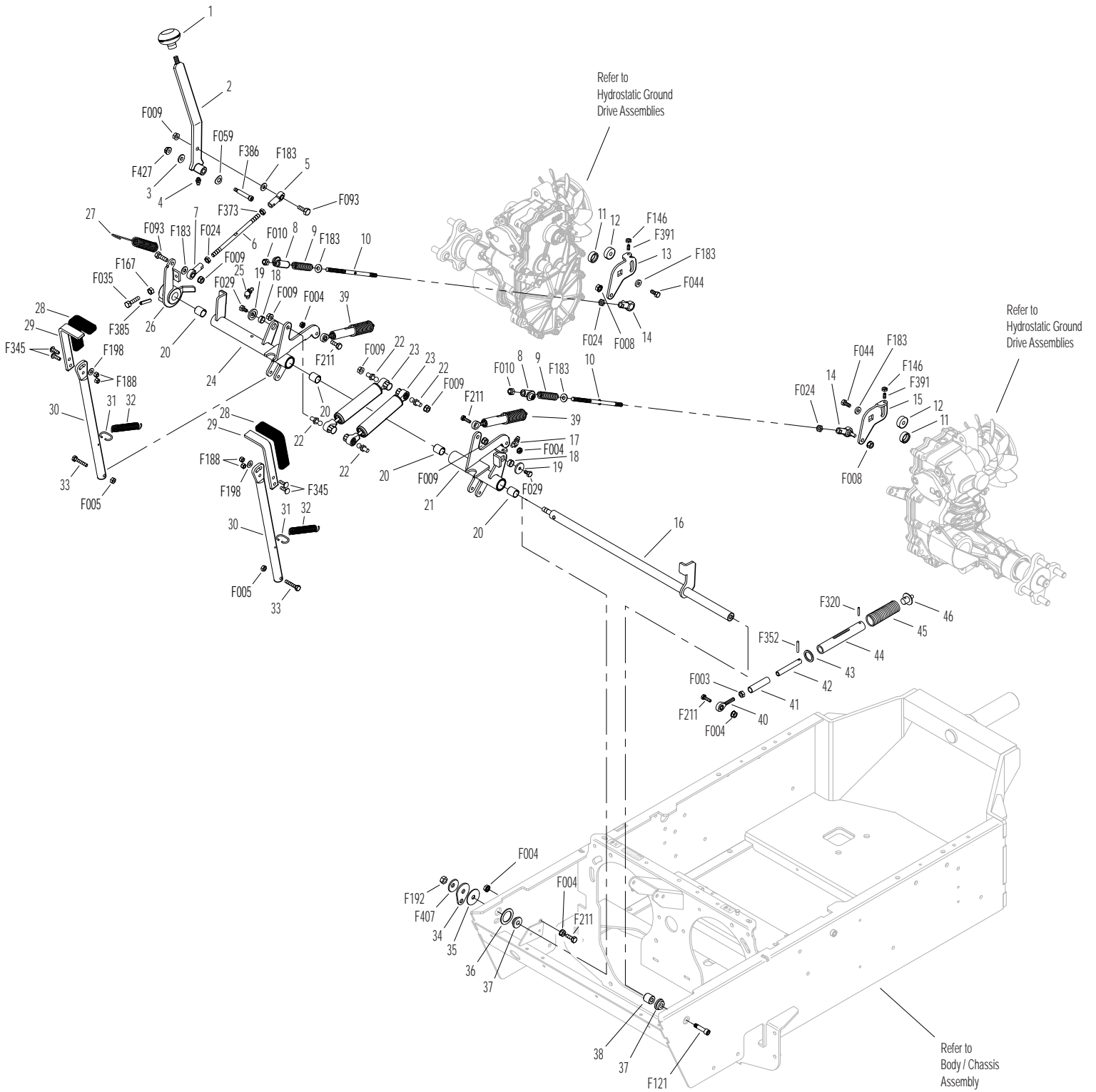
Beginning S/N 124882  
 Effective Date 10-07-13  
 Use only genuine Walker® replacement parts.

# STEERING CONTROL ASSEMBLIES

ITEM NO.	PART NO.	DESCRIPTION	NO. REQ'D	ITEM NO.	PART NO.	DESCRIPTION	NO. REQ'D
<b>Steering Lever &amp; FSC Assemblies</b>				<b>Transmission Spring Assemblies</b>			
1	5862	FSC Knob	1	39	4199	Transmission Spring Assembly (Includes Items # 40-46, F003, F004, F211, F320 & F352)	*
2	4170	FSC Lever Assembly (Includes Item # 4)	*	40	4552	Ball Joint (1/4-28)	2
3	2170-1	Step Washer	1	41	5194	Plunger Sleeve	2
4	5830	Grease Fitting	1	42	5192-2	Spring Plunger (Female)	2
5	5214-5	Ball Joint (5/16-24/LH) W/O Stud	1	43	5193	Washer (3/4 x 1 x .085)	2
6	4213	Control Rod (6-1/4)	1	44	6191	Spring Slide (4-3/4)	2
7	5214-4	Ball Joint (5/16-24) W/O Stud	1	45	5195	Compress Spring (1 x 5-1/8)	2
8	5463-2	Steering Lever Actuator	2	46	6196	Spring Slide Cap	2
9	5665-1	Compression Spring (2-1/2)	2	<b>Fasteners</b>			
10	2213	Control Rod (7")	2				
11	2212-3	Seal Retainer	2				
12	2212	Transmission Control Arm Stop	2				
13	2212-2	Transmission Control Arm, RH	1		F003	1/4-28 Hex Nut	2
14	5214-2	Ball Joint (5/16-24) (Nylon Lined)	2		F004	1/4-20 Keps Nut	4
15	2212-1	Transmission Control Arm, LH	1		F005	1/4-20 ESNA Nut	2
16	2451-1	Steering Pivot Shaft With Stop	1		F008	5/16-24 Keps Nut	2
17	5830-3	Grease Fitting (45 Degree)	1		F009	5/16-18 Whiz Locknut	6
18	7201-2	Fiberglide Bearing (1/2")	2		F010	5/16-24 ESNA Nut	2
19	2463	Actuator Washer	2		F024	5/16-24 Jam Nut	3
20	8201-3	Fiberglide Bearing	4		F029	1/4-20 x 1/2 Hex Bolt	2
21	2451-5	Speed Control Actuator, LH (Includes Items # 17 & 20)	1		F035	5/16-18 x 1-1/4 Hex Bolt	1
22	5146	10mm Ball Stud	4		F044	5/16-24 x 3/4 Hex Bolt	2
23	2215-5	Steering Lever Dampener	2		F059	3/8 Wave Spring Washer	1
24	2451-6	Speed Control Actuator, RH (Includes Items # 20 & 25)	1		F093	5/16-18 x 1 Hex Bolt	2
25	5830-4	Grease Fitting (90 Deg.)	1		F121	5/16-18 x 3/8 x 1 SHL Bolt	1
26	4451-4	FSC Friction Actuator	1		F146	1/4-20 Jam Nut	2
27	4219	Extension Spring (3/4 x 6-1/2)	1		F167	5/16-18 Hex Nut	1
28	5850-2	Handle Grip, Foam (5-1/2)	2		F183	.312 x .700 x .074 Washer	6
29	5453-20	Steering Lever Handle (+1") Adjustable, SS (Includes Items # 28, F188, F198 & F345)	2		F188	1/4-20 Self-Locking Nut	4
30	4452-4	Steering Lever Tube W/Tab	2		F192	3/8-24 Self-Locking Nut	1
31	5450	D-Clip	2		F198	.250 x .625 x .040 Washer, SS	2
32	5222	Extension Spring (1/2 x 3-1/4)	2		F211	1/4-20 x 7/8 Hex Bolt	3
33	4452-6	Steering Pivot (1/4-20 x 1-5/8)	2		F320	1/8 x 3/4 Split Spring Pin	2
34	4142-1	FSC Cam	1		F345	1/4-20 x .770 Knurled Bolt	4
35	5141	FSC Friction Washer (1-1/2 x 3/8 x 1/16)	1		F352	5/32 x 1 Heavy Duty Roll Pin	2
36	4142-2	FSC Friction Washer (1-1/2 x 1-1/32 x 1/16)	1		F373	5/16-24 Hex Nut, LH	1
37	9704-3	Pivot Rod Bushing, Plastic	2		F385	1/4 x 1-1/4 Roll Pin	1
38	2451-4	Steering Shaft Spacer	1		F386	5/16-18 x 1-1/2 x 3/8 Shoulder Bolt	1
					F391	1/4-20 x 1/2 Set Screw, SS	2
					F407	Belleville Washer 3/8 x 1.187, SS	1
					F427	5/16-18 Flange Nut	1
				*	Service Part Only		



# STEERING CONTROL ASSEMBLIES

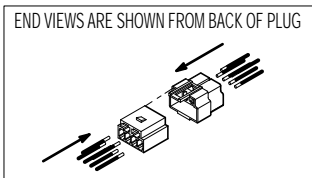
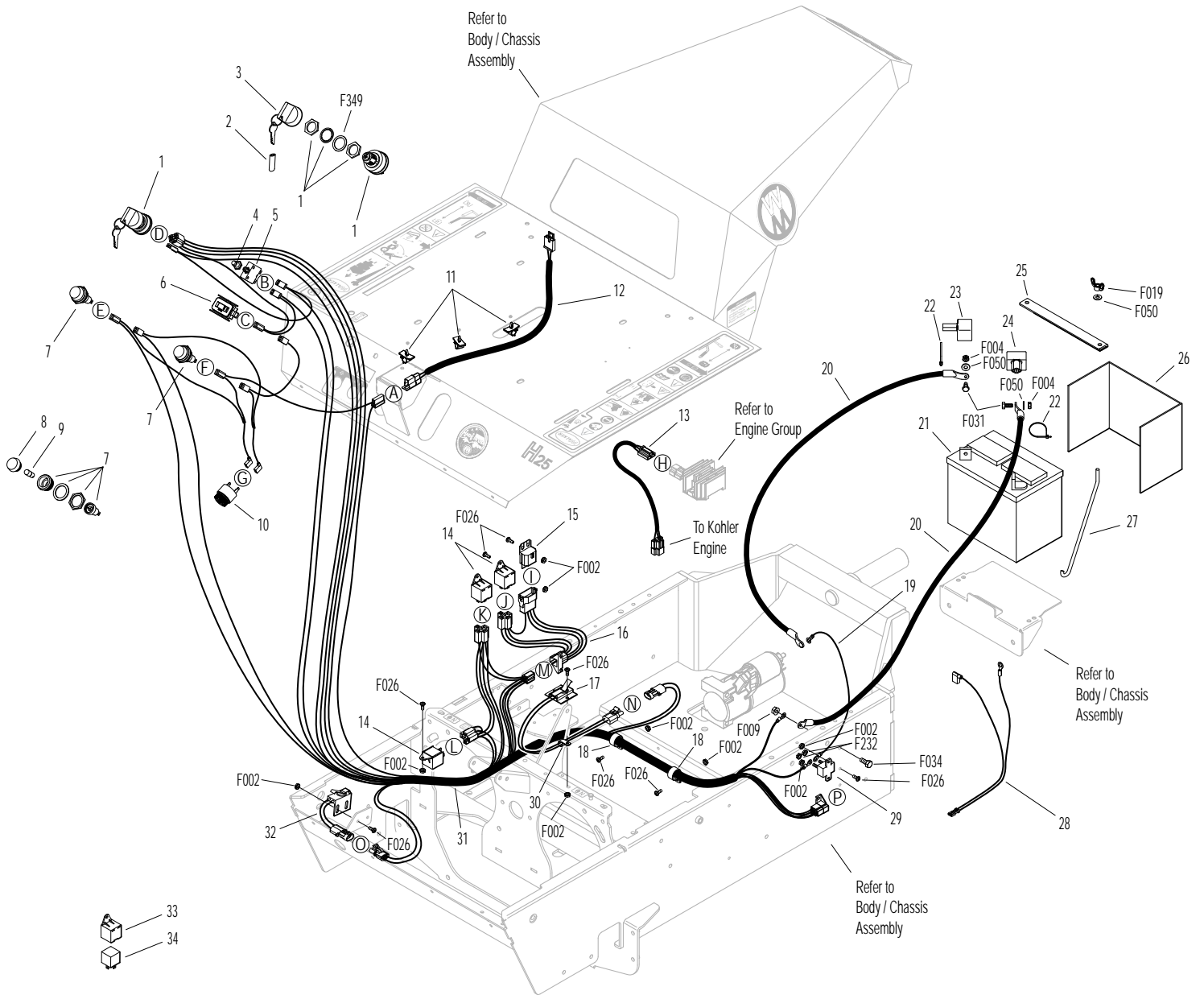


Beginning S/N 124882  
 Effective Date 10-07-13  
 Use only genuine Walker® replacement parts.

# ELECTRICAL ASSEMBLY

ITEM NO.	PART NO.	DESCRIPTION	NO. REQ'D	ITEM NO.	PART NO.	DESCRIPTION	NO. REQ'D
<b>Electrical Assembly</b>				23	5933	Battery Terminal Insl., Red (+)	1
1	8960-15	Ignition Switch W/Keys (Includes Items # 2, 3 & F349)	1	24	5932	Battery Terminal Insl., Blk (-)	1
2	7854	Plastic Tip, Red	1	25	5844	Battery Hold-Down Bar	1
3	8960-3	Key Set W/Umbrella	1	26	2910-1	Battery Shield	1
4	7941-3	Boot, Circuit Breaker	1	27	5839	Hook Bolt	2
5	7941-6	Circuit Breaker (15 Amp)	1	28	2940-15	Wire Extension	1
6	8990-1	Hourmeter (Global)	1	29	8941	Circuit Breaker (30 Amp) (Auto Reset/Sealed)	1
7	8996-2	Red Indicator Light Assembly (Includes Items # 8 & 9)	2	30	5833	Cable Clamp (1/4)	1
8	8996-4	Red Indicator Lens	2	31	2940-5	Wire Harness	1
9	8996-3	Indicator Bulb (Replacement for P/N 8996-2)	*	32	5942-4	PTO Safety Switch (NO)	1
10	8536-2	Warning Horn Assembly	1	33	6941-7	Relay Mount	*
11	6105-3	Harness Clip	3	34	6941-6	Relay Switch (30/40 Amp)	*
12	2940-4	Seat Switch Harness	1	<b>Fasteners</b>			
13	8012-6	Regulator Adapter Harness	1	F002	10-24 Keps Nut		12
14	6942	Relay Switch 30/40 Amp (NC) (Includes Items # 33 & 34)	3	F004	1/4-20 Keps Nut		2
15	7948-6	Time Delay Module (.5 Second Delay)	1	F009	5/16-18 Whiz Locknut		1
16	7948-5	Time Delay Harness	1	F019	1/4-20 ESNA Wing Nut		2
17	5941-2	Safety Switch	1	F026	10-24 x 1/2 PPHMS		12
18	7833-2	Cable Clamp (1 x 1/4)	2	F031	1/4-20 x 5/8 Hex Bolt		2
19	7938	Lead Wire, Battery Charge (Alternator to Starter)	1	F034	5/16-18 x 3/4 Hex Bolt		1
20	2940-3	Battery Cable (14")	2	F050	1/4 SAE Washer		4
21	NS	Battery (12V/340CCA/Dry)	1	F232	10-32 Keps Nut		2
22	5975-1	Cable Tie (18# x 3-3/4")	2	F349	Washer .835 ID 1.122 OD, SS		1
				* Service Part Only			

# ELECTRICAL ASSEMBLY



DETAIL A



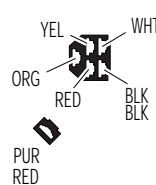
DETAIL B



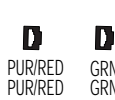
DETAIL C



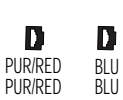
DETAIL D



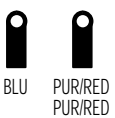
DETAIL E



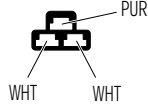
DETAIL F



DETAIL G



DETAIL H



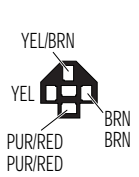
DETAIL I



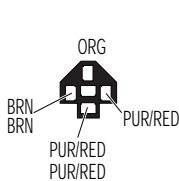
DETAIL J



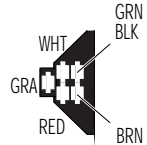
DETAIL K



DETAIL L



DETAIL M



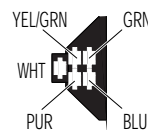
DETAIL N



DETAIL O



DETAIL P



DETAIL Q



Beginning S/N 124882  
Effective Date 10-07-13  
Use only genuine Walker® replacement parts.

# LUBRICATION POINTS

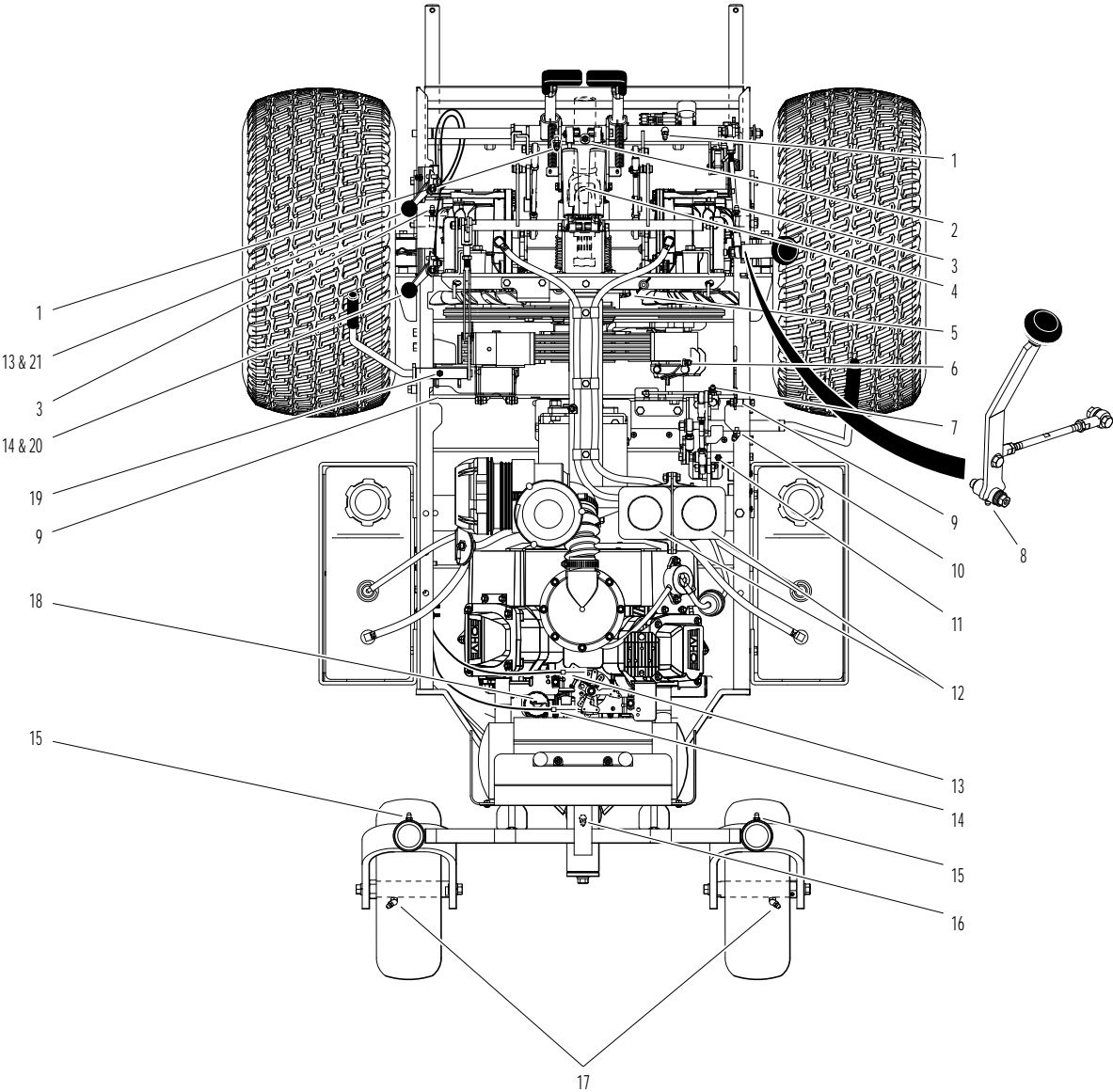
ITEM NO.	LOCATION	LUBRICATION TYPE	NO. PLACES	ITEM NO.	LOCATION	LUBRICATION TYPE	NO. PLACES
<b>Lubrication Points</b>							
1	Steering Lever Pivot	Grease	2	10	PTO Clutch Lever Pivot	Grease	1
2	Deck-to-PTO Coupling (Grease Spline Slide Area)	Grease	1	11	Clutch Arm Pivot	Grease	1
3	Deck Support Arm Pivot	Grease	2	12	Transaxle Oil Reservoir	Oil	2
4	Universal Joint Tube Assembly	Grease*	1	13	Throttle Control Cable Ends	Oil	2
5	Hydro Idler Arm Pivot (Prior to S/N 119965)	Grease	1	14	Choke Control Cable Ends	Oil	2
	Transmission Belt Tensioner (Beginning S/N 119965)	Grease	1	15	Tail Wheel Caster Fork Pivot	Grease	2
6	PTO Belt Tightener Pivot	Grease	1	16	Rear Axle Pivot	Grease	1
7	Clutch Actuator Push Rod	Grease	1	17	Rear Wheel Bearing	Grease	2
8	FSC Lever Pivot	Grease	1	18	Engine / Oil Filler	Oil**	1
9	Body Latch Pivot	Oil	2	19	Parking Brake Pivot	Grease	1
				20	Choke Control Pivot	Oil	1
				21	Throttle Control Pivot	Oil	1

\* Grease every eight (8) hours.

\*\* Refer to MH25 **Operator's Manual** for procedure for checking and changing oil in Engine Crankcase.

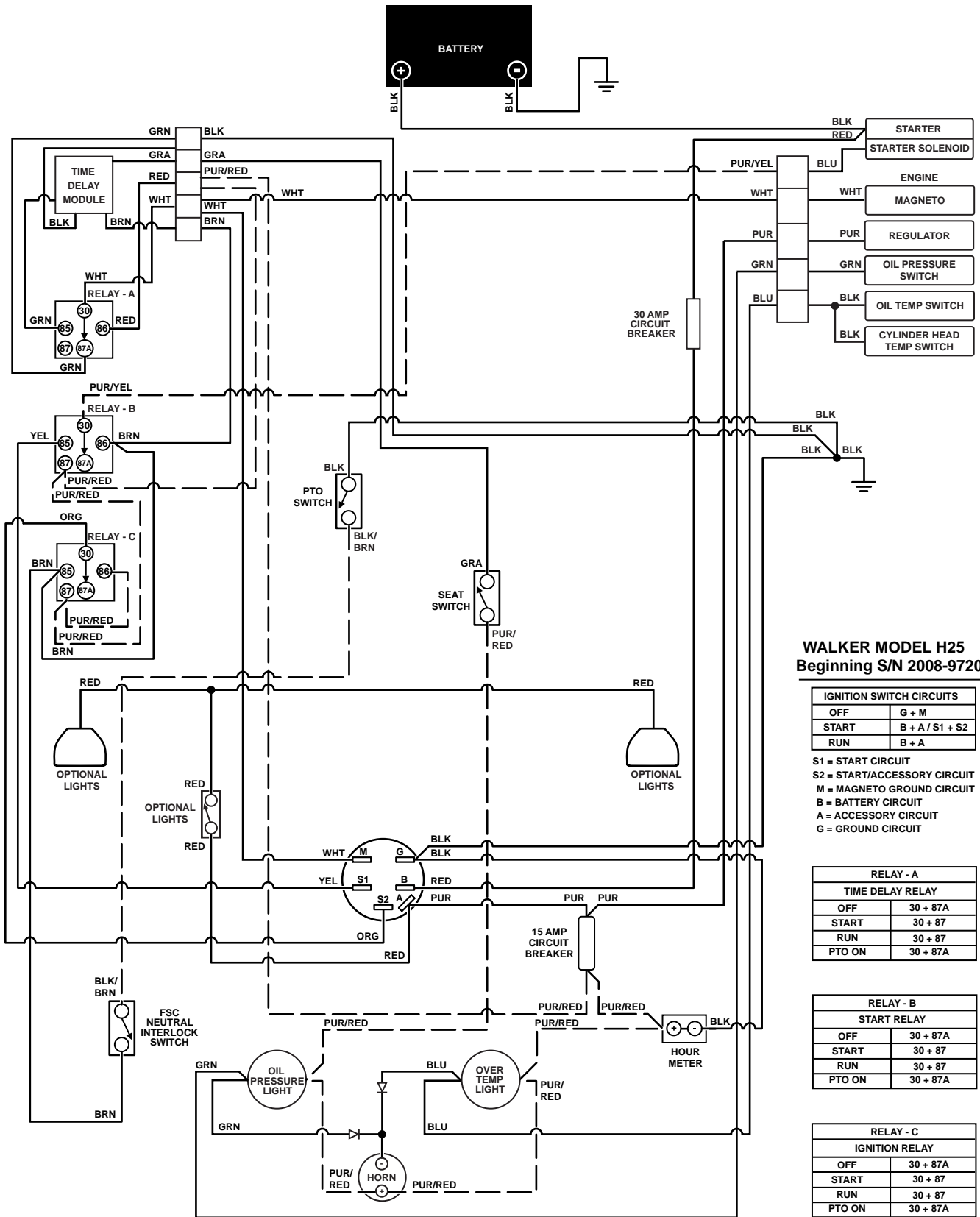
**NOTE:** See Model MH25 **Operator's Manual** for proper lubrication intervals.

# LUBRICATION POINTS



Beginning S/N 124882  
Effective Date 10-07-13  
Use only genuine Walker® replacement parts.

# WIRING SCHEMATIC



## WALKER MODEL H25 Beginning S/N 2008-97204

IGNITION SWITCH CIRCUITS	
OFF	G + M
START	B + A / S1 + S2
RUN	B + A

S1 = START CIRCUIT  
 S2 = START/ACCESSORY CIRCUIT  
 M = MAGNETO GROUND CIRCUIT  
 B = BATTERY CIRCUIT  
 A = ACCESSORY CIRCUIT  
 G = GROUND CIRCUIT

RELAY - A	
TIME DELAY RELAY	
OFF	30 + 87A
START	30 + 87
RUN	30 + 87
PTO ON	30 + 87A

RELAY - B	
START RELAY	
OFF	30 + 87A
START	30 + 87
RUN	30 + 87
PTO ON	30 + 87A

RELAY - C	
IGNITION RELAY	
OFF	30 + 87A
START	30 + 87
RUN	30 + 87
PTO ON	30 + 87A

# LIMITED WARRANTY FOR WALKER MODEL H25 RIDER MOWER

## 1. WHAT THIS WARRANTY COVERS, AND FOR HOW LONG:

Walker Manufacturing company will, at its option, repair or replace, without charge, any part covered by this warranty which is found to be defective in material and/or workmanship within one (1) year\* after date of sale to the original retail purchaser unless the product is used for rental purposes, in which case this warranty is limited to ninety (90) days. At Walker's request, customer will make the defective part available for inspection by Walker and/or return the defective part to Walker, transportation charges prepaid. All parts and components of the Walker Mower are covered by this warranty **except** the following components which are warranted separately by their respective manufacturers:

Kohler Engine  
Battery

The available warranties covering these items are furnished with each mower. Walker does not assume any warranty obligation, liability or modification for these items, which are covered exclusively by the stated warranty of the respective manufacturers noted above.

\* Extended warranties are offered for the following powertrain components:

- A three (3) year or 3000 hour (whichever comes first) warranty is offered for Hydro-Gear ZT3400 Hydrostatic transaxle; covers full cost of replacement up to 1000 hours of use, and after 1000 hours warranty coverage is prorated against 3000 hours.

## 2. WHAT THIS WARRANTY DOES NOT COVER:

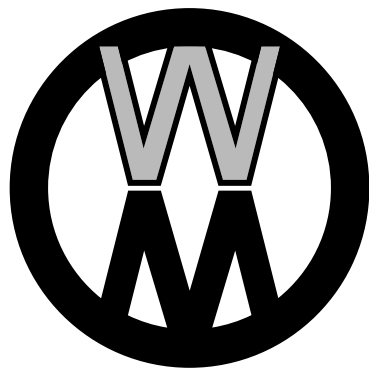
- A. This warranty does not cover defects caused by depreciation or damage caused by normal wear, accidents, improper maintenance, improper use or abuse of the product, alterations, or failure to follow the instructions contained in the Operator's Manual for operation and maintenance.
- B. The customer shall pay any charges for making service calls and/or for transporting the mower to and from the place where the inspection and/or warranty work is performed.

## 3. HOW TO OBTAIN SERVICE UNDER THIS WARRANTY:

Warranty service can be arranged by contacting the dealer where you purchased the mower or by contacting Walker Manufacturing Company, 5925 East Harmony Road, Ft. Collins, CO 80528. Proof of the date of purchase may be required to verify warranty coverage.

## 4. WARRANTY LIMITATION:

- A. **THERE IS NO OTHER EXPRESS WARRANTY. ANY WARRANTY THAT MAY BE IMPLIED FROM THIS PURCHASE INCLUDING MERCHANTABILITY AND FITNESS FOR A PARTICULAR PURPOSE IS HEREBY LIMITED TO THE DURATION OF THIS WARRANTY AND TO THE EXTENT PERMITTED BY LAW ANY AND ALL IMPLIED WARRANTIES ARE EXCLUDED.** Some states do not allow limitations on how long an implied warranty lasts, so the above limitations may not apply to you.
- B. **WALKER WILL NOT BE LIABLE FOR ANY INCIDENTAL, CONSEQUENTIAL, OR SPECIAL DAMAGES AND/OR EXPENSES IN CONNECTION WITH THE PURCHASE OR USE OF THE MOWER.** Some states do not allow the exclusion or limitation of incidental or consequential damages, so the above limitation(s) or exclusion(s) may not apply to you.
- C. Only the warranty expressed in this limited warranty shall apply and no dealer, distributor, or individual is authorized to amend, modify, or extend this warranty in any way. Accordingly, additional statements such as dealer advertising or presentations, whether oral or written, do not constitute warranties by Walker, and should not be relied upon.
- D. This warranty gives you specific legal rights, and you may also have other rights which vary from state to state.



**WALKER**

**WALKER MFG. CO. • 5925 E. HARMONY ROAD, FORT COLLINS, CO 80528 • (970) 221-5614**  
**FORM NO. 100713      PRINTED IN USA      [www.walkermowers.com](http://www.walkermowers.com)      ©2014 WALKER MFG. CO**