

WALKER

Illustrated Parts Manual

T27i



Beginning S/N: 187255
P/N 8000-56

KEY TO ABBREVIATIONS USED IN THIS MANUAL

<i>Abbreviation</i>	<i>What it Represents</i>
° (Dimension)	Degrees (Angle)
" (Dimension)	inches
(-)	Negative (Polarity)
(+)	Positive (Polarity)
-1 (as deck style designation)	Standard (Aluminum) Gear Drive Deck
-2 (as deck style designation)	Heavy Duty (Cast Iron) Gear Drive Deck
-3 (as deck style designation)	Belt Drive Deck
AT	All-Terrain
CCW	Counter-clockwise
CW	Clockwise
D	Diameter
DC	Deck, Collection (number refers to size in inches)
DM	Deck, Mulching (number refers to size in inches)
DR	Deck, Rear Discharge (number refers to size in inches)
DS	Deck, Side Discharge (number refers to size in inches)
DU	Garlock (Bearing)
ESNA (Fastener)	Nylon Insert Locknut
FSC	Forward Speed Control
GA	Gauge
gal.	gallon
GHS	Grass Handling System
GR (Fastener)	Grade
HD	Heavy Duty
HP	Horse Power
ID	Identification or Inside Diameter
L	Length
LH	Left Hand (orientated with operator on seat)
LP	Low Profile
mm (Dimension)	millimeters
MS (Fastener)	Machine Screw
NS (as part number)	Item is not sold by Walker Manufacturing
OD	Outside Diameter
oz.	ounce
PFH (Fastener)	Phillips Flat Head
P/N	Part Number
PPH (Fastener)	Phillips Pan Head
PTH (Fastener)	Phillips Truss Head
PTO	Power Take-Off
QKS	Quick Slide
qt.	quart
RH	Right Hand (orientated with operator on seat)
SAE (Fastener)	Society of Automotive Engineers
SBH (Fastener)	Socket Button Head (Bolt)
SFH (Fastener)	Slotted Flat Head
SHC (Fastener)	Socket Head Cap
SHL (Fastener)	Shoulder (Bolt)
SM (Fastener)	Sheet Metal (Screw)
S/N	Serial Number
SQH (Fastener)	Square Head
SS (Fastener)	Stainless Steel
ST (Fastener)	Self-Tapping (Screw)
TOPS™	Transmission Oil Performance System
V	Volts

NOTE: In some instances, combinations of abbreviations may be used (e.g. PPHMS - Phillips Pan Head Machine Screw).

ILLUSTRATED PARTS LIST

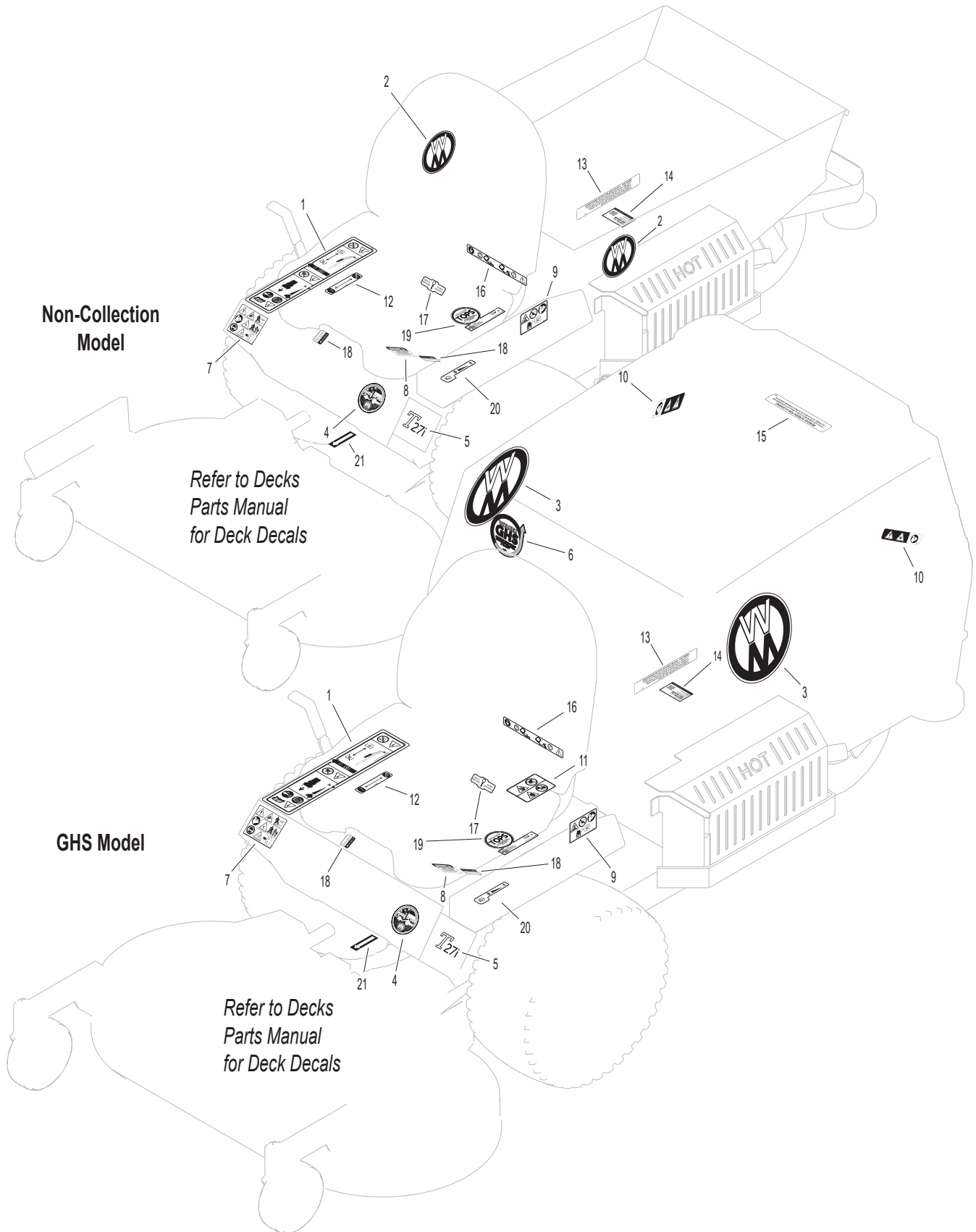
<i>Section of Tractor Covered</i>	<i>Page</i>	<i>Section of Tractor Covered</i>	<i>Page</i>
<hr/>		<hr/>	
Decals		Electrical Components	
Tractor Decals	2	Electrical Assembly	34
Body / Chassis Assemblies		Electrical Assemblies (GHS 10.0 Bushel Components).....	36
Body / Chassis Assembly (GHS Models)	4	Maintenance	
Rear Body Assembly (GHS Models)	6	Lubrication Points	38
Body Assembly (Non-Collection Models).....	8	Wiring Schematic.....	40
Tractor Components		Warranty	
Main Component Power Transmission (GHS Models)	10	Limited Warranty	41
(Non-Collection Models).....	12		
Engine Group.....	14		
Engine Group (Fuel Components)	16		
Hydrostatic Ground Drive Assemblies.....	18		
Steering Control Assemblies	20		
Throttle Control Assembly.....	22		
Parking Brake Assembly	24		
GHS Group	26		
GHS Powerfil® Assembly	28		
GHS 10.0 Bushel Catcher Assembly.....	30		
Instrument Panel Assembly	32		

TRACTOR DECALS

ITEM NO.	PART NO.	DESCRIPTION	LOCATION	NO. REQ'D GHS	NO. REQ'D NON-COLLECTION
Walker Product and Operation Decals					
1	8600-33	RH Fender	Body, RH Side Near Seat	1	1
2	5800	Walker Mower (4" Round)	Utility Bed (one on each side)	0	2
3	5800-22	Walker (8" Round)	10.0 Bushel Catcher (one on each side)	2	0
4	5856-1	Made in USA	Body	1	1
5	8821-30	Decal, T27i	Body	1	1
6	5813-2	Decal, 4" Grass-Pak Powerfil®	Powerfil® Cover Plate	1	0
Danger Decals Warning Decals Caution Decals					
7	8600-34	Warning, Read Manual	Body	1	1
8	5810-3	Decal, Hydro Warning	LH Gear Axle Drive Assembly	1	1
9	8600-12	Danger, Engine Exhaust	Front Body, LH Side	1	1
10	8600-10	Danger, Pinch Point	10.0 Bushel Catcher Mounting Frame Assembly (one on each side)	2	0
11	8600-4	Danger, Rotating Blower Blades	Body, Near Body Chute	1	0
Maintenance Decals					
12	8600-30	Parking Brake	Body, RH Side Below Seat	1	1
13	5855	Important, Engine Cooling	Engine	1	1
14	6895-103	Kohler 300 Hour Oil	Oil Cooler / Regulator Mount	1	1
15	5869	Removable Screen	10.0 Bushel Catcher Removable Screen	1	0
16	8600-16	Front Body Closure	Rear Cross Member, Body	1	1
17	7827	Oil Level	Jackshaft Support	1	1
18	5810-1	Axle Oil Level	Gear Axle Drive Assemblies (one on each)	2	2
19	5024-24	Decal, TOPS™	Oil Reservoir Tank	1	1
20	8600-31	Throttle	Body, LH Side	1	1
21	6875	PTO Alignment Arrow	Universal Joint Tube Assembly	1	1

NOTE: All parts requiring decals are shipped with decals applied.

TRACTOR DECALS



BODY / CHASSIS ASSEMBLY (GHS MODELS)

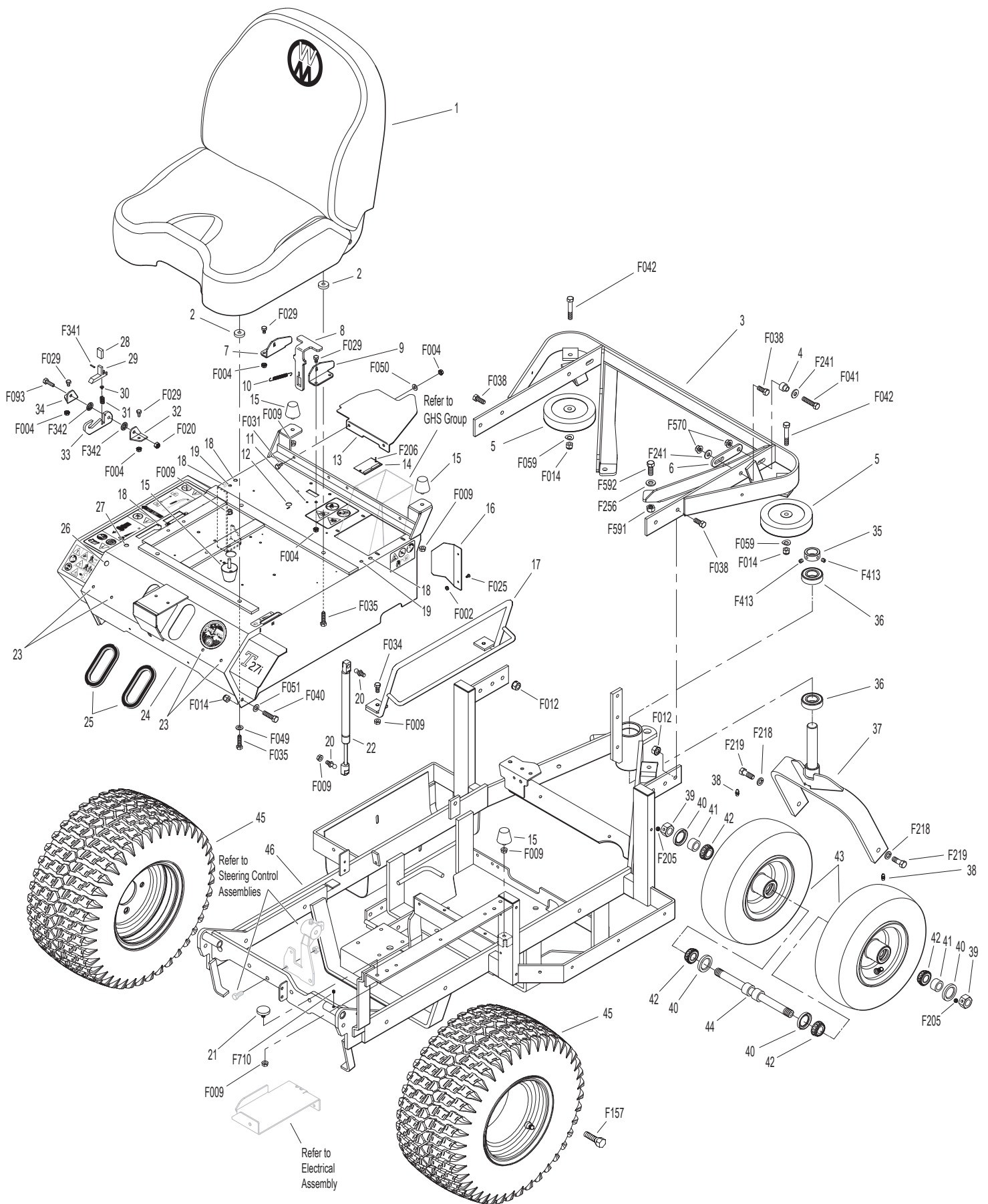
ITEM NO.	PART NO.	DESCRIPTION	NO. REQ'D	ITEM NO.	PART NO.	DESCRIPTION	NO. REQ'D
Seat Assembly				43	8035-1	Wheel & Tire Assembly (13 x 4.5-6) (With Bearing Race)	2
1	6104-31	Comfort Seat	1				
2	2845-3	Aluminum Washer (5/16 x 1 x 1/4)	4	8035-3	Tail Wheel Tire (13 x 4.5-6 Ply)	**	
Rear Bumper Assembly (GHS Models Only)*				8036		Wheel & Hub (6 x 3.25) (Includes Items # 38 & Bearing Race)	**
3	7516	GHS Rear Bumper	1				
4	7516-5	Catcher Pivot Bushing	2	8037-2	Bearing Race	**	
5	5162	Roller Wheel (5" Rubber)	2	7420-20	Dual Tail Wheel & Tire Assembly (Includes Items # 39-44)	**	
6	7517-3	Catcher Pivot Plate	2				
Body Assembly				44	8038	Tail Wheel Axle (3/4 x 10-3/8)	1
7	7383-6	Body Latch Bracket, RH	1	45	7070-2	Wheel & Tire Assembly (18 x 9.50-8)	2
8	7383-5	Body Latch Lever	1		7070-3	Drive Tire (18 x 9.50-8)	**
9	7383-7	Body Latch Bracket, LH	1		5070-4	Wide Wheel (8 x 7)	**
10	7222	Extension Spring (1/4 x 3)	1	46	8300-20	Chassis Frame (EFI / 5.0 gal.)	1
11	5989-12	Dome Plug (3/16)	1	Fasteners			
12	5989-10	Dome Plug (9/16)	1	F002	10-24 Keps Nut	2	
13	8101-9	Front Body Engine Guard	1	F004	1/4-20 Keps Nut	8	
14	NS	Body ID Plate	1	F009	5/16-18 Whiz Locknut	10	
15	5845	Rubber Bumper (1.50 x 1.25)	4	F012	3/8-16 Keps Nut	4	
16	8118	Heat Deflector	1	F014	3/8-16 ESNA Nut	4	
17	7422	Panel Guard	1	F020	5/16-18 ESNA Nut	1	
18	5989-4	Dome Plug (3/8)	4	F025	10-24 x 3/8 PPHMS	2	
19	5989-3	Dome Plug (5/16)	2	F029	1/4-20 x 1/2 Hex Bolt	6	
20	5146	10mm Ball Stud	2	F031	1/4-20 x 5/8 Hex Bolt	2	
21	7844	Rubber Bumper (1.25 x .250)	1	F034	5/16-18 x 3/4 Hex Bolt	2	
22	2145	Gas Spring	1	F035	5/16-18 x 1-1/4 Hex Bolt	4	
23	5989-9	Dome Plug (1/4)	4	F038	3/8-16 x 1 Hex Bolt	6	
24	8100-14	Front Body	1	F040	3/8-16 x 1-1/2 Hex Bolt	2	
25	5180	Edge Molding, Lever Opening	2	F041	3/8-16 x 1-3/4 Hex Bolt	2	
26	5989-55	Dome Plug (1/2)	1	F042	3/8-16 x 2-1/4 Hex Bolt	2	
27	5989-5	Dome Plug (7/16)	1	F049	5/16 SAE Washer	2	
Tilt-Up Latch Assembly***				F050	1/4 SAE Washer	2	
28	5847	Plastic Tip	1	F051	3/8 SAE Washer	2	
29	5744-20	Spring Arm, Tilt-Up Latch	1	F059	3/8 Wave Spring Washer	2	
30	5744-10	Spring Pivot Bushing	1	F093	5/16-18 x 1 Hex Bolt	1	
31	5744-15	Compression Spring (3/8 x 5/8)	1	F157	1/2-20 x 1-1/4 Wheel Lug Bolt	8	
32	5744-13	Mount Angle, LH	1	F205	5/16-18 x 1/4 Set Screw, Knurl Point	2	
33	5744-12	Hook, Tilt-Up Latch	1	F206	#2 x 3/16 Drive Pin	2	
34	5744-14	Mount Angle, RH	1	F218	7/16 Split Lock Washer	2	
Chassis Assembly				F219	7/16-14 x 1-1/4 Hex Bolt	2	
35	5267-1	Retainer Collar (1") (Includes Item # F413)	1	F241	.375 x .875 x .10 Washer	4	
36	5270-1	Ball Bearing	2	F256	7/16 SAE Washer	2	
37	7420	Tail Wheel Fork	1	F341	Coil Roll Pin (7/64 x 9/16)	1	
38	5830-3	Grease Fitting (45 Degree)	2	F342	5/16 Conical Washer	2	
39	8039	Nut, Wheel Axle	2	F413	5/16-24 x 5/16 Set Screw	2	
40	8768-2	Seal, Reverse Lip	4	F570	3/8-16 Flange Top Lock Nut	4	
41	8038-1	Spacer, Wheel Axle (.750 ID x 1.125 OD)	2	F591	7/16-14 Flange Top Lock Nut	2	
42	8037	Bearing Cone (3/4 ID)	4	F592	7/16-14 x 1-1/8 Hex Bolt GR 5	2	
				F710	1/4-28 x 1/4 Set Screw (Knurled Cup), SS	1	

* Rear Bumper Assembly for Non-Collection Models is not shown here. Refer to **BODY ASSEMBLY (NON-COLLECTION MODELS)**, Page 8.

** Service Part Only

*** Complete Tilt-Up Latch Assembly Kit available by ordering kit # 5744-5.

BODY / CHASSIS ASSEMBLY (GHS MODELS)



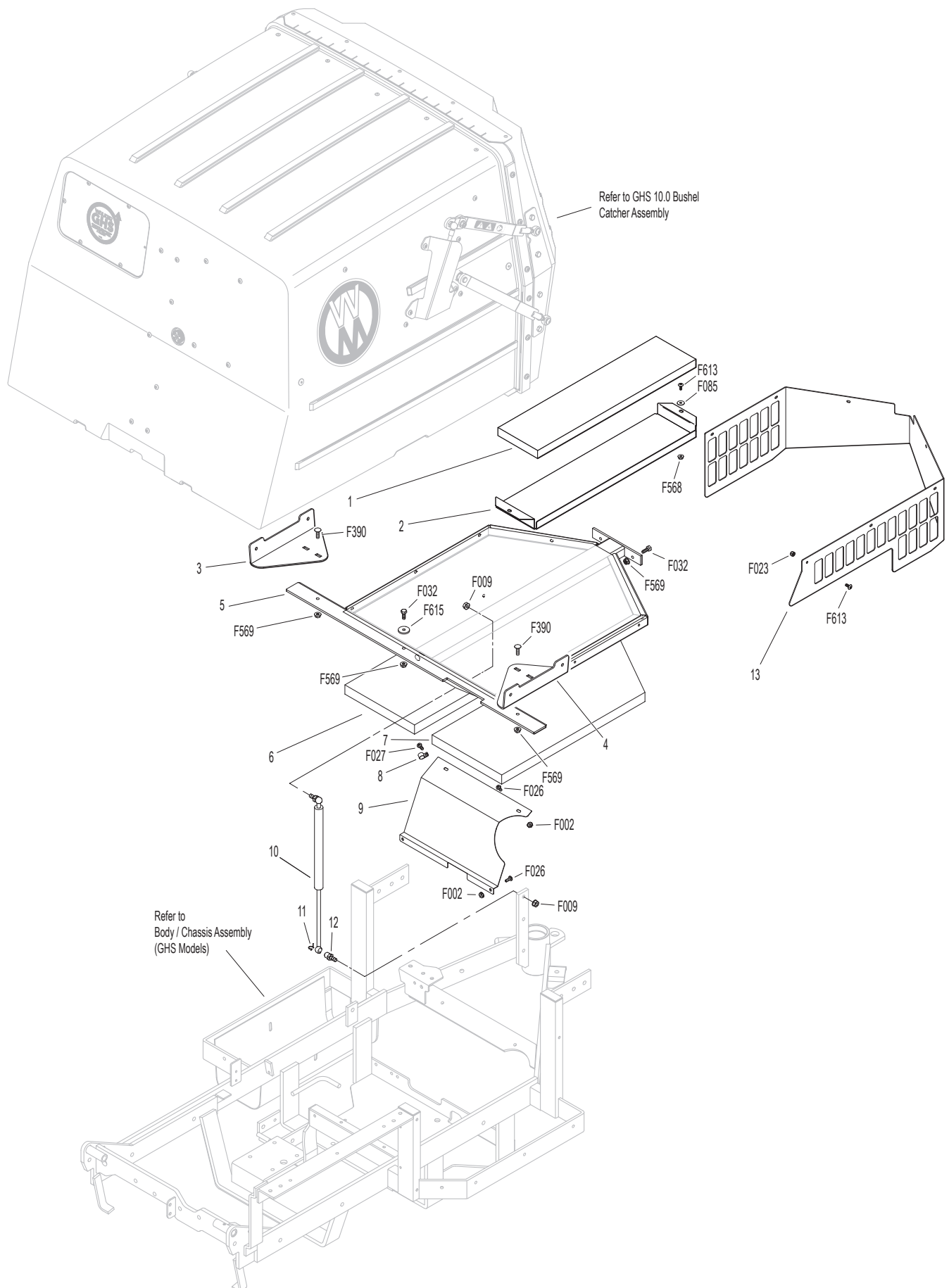
Model T27i Beginning S/N 187255
 Use only genuine **Walker®** replacement parts.

REAR BODY ASSEMBLY (GHS MODELS)

ITEM NO.	PART NO.	DESCRIPTION	NO. REQ'D	ITEM NO.	PART NO.	DESCRIPTION	NO. REQ'D
Rear Body Assembly (GHS Models)				Fasteners			
1	7190-3	Insulation Foam Pad (5 x 20)	1	F002		10-24 Keps Nut	4
2	8082	Heat Shield	1	F009		5/16-18 Whiz Locknut	2
3	8515-18	Catcher Handle Plate, RH	1	F023		10-24 ESNA Nut	7
4	8515-17	Catcher Handle Plate, LH	1	F026		10-24 x 1/2 PPHMS	3
5	8615-4	Catcher Support Frame, 10.0	1	F027		10-24 x 5/8 PPHMS	1
6	7190-2	Insulation Foam Pad, RH	1	F032		1/4-20 x 3/4 Hex Bolt	3
7	7190-1	Insulation Foam Pad, LH	1	F085		3/16 Rivet Backup Washer	2
8	5832	Cable Clamp (1/2)	1	F390		1/4-20 x 7/8 Carriage Bolt	2
9	8389-5	Splash Guard	1	F568		10-24 Flange Top Lock Nut	2
10	7145	Gas Spring Assembly (Includes Items # 11 & 12)	1	F569		1/4-20 Flange Top Lock Nut	5
11	7147	Spring Clip	2	F613		10-24 x 1/2 Truss Head Torx	9
12	7146	13mm Ball Stud	2	F615		1.0 x .255 x .125 Washer	1
13	8105-10	Rear Body Panel	1				

NOTE: Rear Bumper Assembly for GHS Models is not shown here. Refer to **BODY / CHASSIS ASSEMBLY (GHS MODELS)**, Page 4.

REAR BODY ASSEMBLY (GHS MODELS)



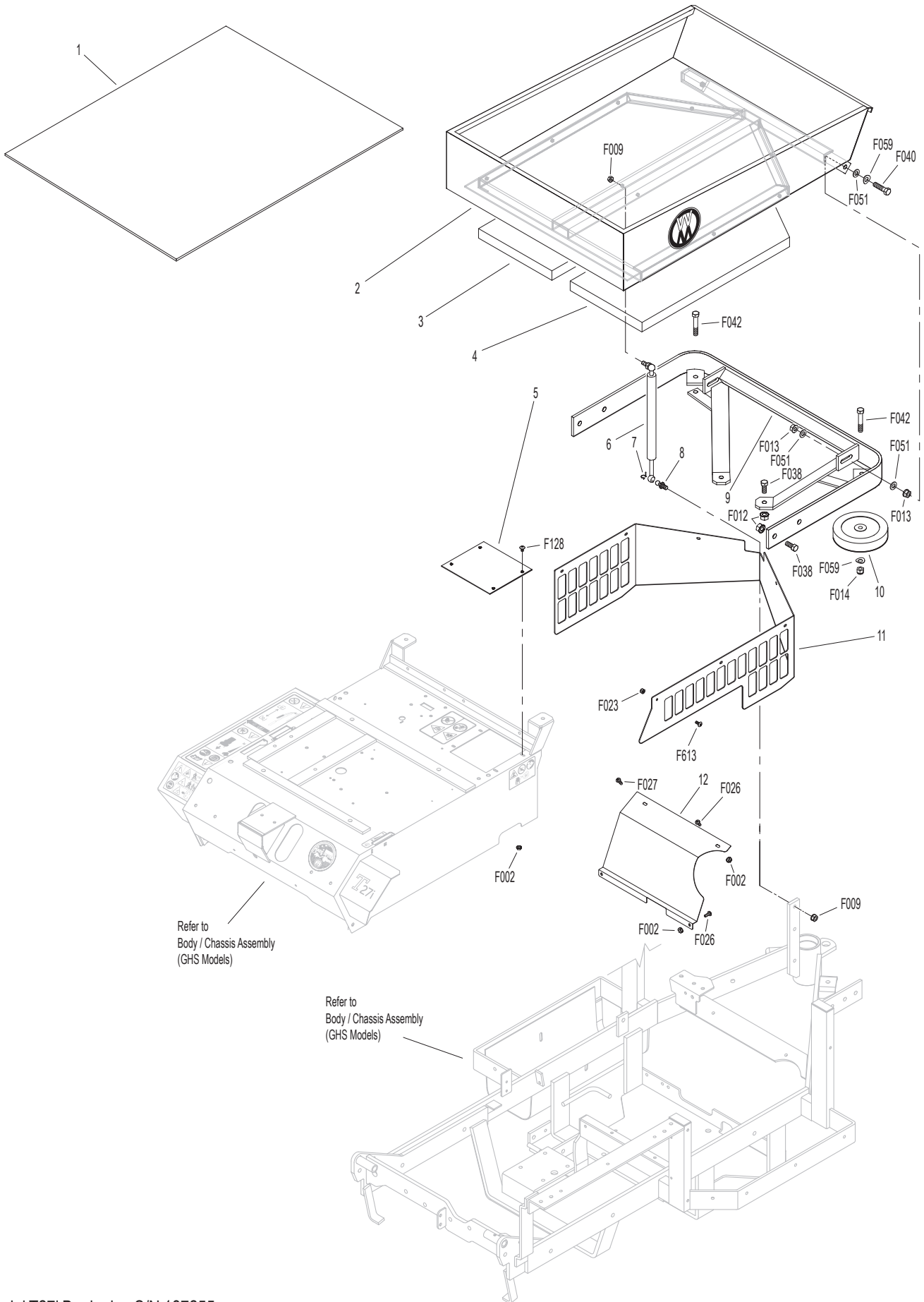
Model T27i Beginning S/N 187255
 Use only genuine **Walker**® replacement parts.

BODY ASSEMBLY (NON-COLLECTION MODELS)

ITEM NO.	PART NO.	DESCRIPTION	NO. REQ'D	ITEM NO.	PART NO.	DESCRIPTION	NO. REQ'D
Utility Bed Assembly				Fasteners			
1	8650-10	Bed Liner (21.5 x 27.5)	1	F002		10-24 Keps Nut	8
2	8650-2	Utility Bed (Includes Item # 1)	1	F009		5/16-18 Whiz Locknut	2
3	7190-2	Insulation Foam Pad, RH	1	F012		3/8-16 Keps Nut	6
4	7190-1	Insulation Foam Pad, LH	1	F013		3/8-16 Whiz Locknut	4
Rear Bumper Assembly (Non-Collection Models)				F014		3/8-16 ESNA Nut	2
5	7153-3	Cover Plate	1	F023		10-24 ESNA Nut	7
6	7145	Gas Spring Assembly (Includes Items # 7 & 8)	1	F026		10-24 x 1/2 PPHMS	3
7	7147	Spring Clip	2	F027		10-24 x 5/8 PPHMS	1
8	7146	13mm Ball Stud	2	F038		3/8-16 x 1 Hex Bolt	6
9	7521	Rear Bumper	1	F040		3/8-16 x 1-1/2 Hex Bolt	2
10	5162	Roller Wheel (5" Rubber)	2	F042		3/8-16 x 2-1/4 Hex Bolt	2
11	8105-10	Rear Body Panel	1	F051		3/8 SAE Washer	6
12	8389-5	Splash Guard	1	F059		3/8 Wave Spring Washer	2
				F128		10-24 x 3/8 PTHMS	4
				F613		10-24 x 1/2 Truss Head Torx	7

NOTE: Refer to **BODY / CHASSIS ASSEMBLY (GHS MODELS)**,
Page 4 for all common parts used on both models.

BODY ASSEMBLY (NON-COLLECTION MODELS)



Model T27i Beginning S/N 187255
Use only genuine Walker® replacement parts.

MAIN COMPONENT POWER TRANSMISSION (GHS MODELS)

ITEM NO.	PART NO.	DESCRIPTION	NO. REQ'D	ITEM NO.	PART NO.	DESCRIPTION	NO. REQ'D
Clutch Lever Assembly				41	5221-1	Extension Spring (3/4 x 5)	2
1	8358-3	Clutch Lever (Includes Items # 2 & 3)	1	42	8539	Starter Relay Mount	1
2	5830	Grease Fitting	8	43	5268	Bearing W/Collar (3/4)	2
3	4850	Handle Grip, Black	1	44	7241-2	Transmission Drive Pulley (3-1/4MV) (Includes Items # F067 & F171)	1
4	7303-10	Clutch Actuator Bolt (3/8)	1	45	7833	Cable Clamp (7/8 x 1/4)	1
5	7380-5	Knuckle Joint (3/8 ID)	1	46	8349	Transmission Belt Tightener Arm	1
6	7226-10	Compression Spring (3/4 x 2-1/2)	1	47	5245	Idler Pulley (3")	1
7	8130-5	Pushrod, Clutch Actuator (Threaded Tube) (Includes Item # 2)	1	48	8394-6	Hydro Jackshaft Mount Assembly (Includes Items # 2, 9, 12, 40, 43, 49, F012, F042, F067 & F171)	*
8	8130-10	Clutch Actuator Rod Assembly (Includes Items # 2, 4-7, F054, F336 & F353)	1	49	8273-1	Jackshaft (3/4 x 8-1/8)	1
9	7201-3	Fiberglide Bearing	6	50	7240-7	Jackshaft Drive Pulley (3.3/3V) (Includes Items # F067 & F171)	1
10	7201-5	Inner Race (2-1/4)	1	Fasteners			
11	8368	PTO Belt Tightener	1	F003	1/4-28 Hex Nut	2	
12	5841	Retainer Washer (3/8 x 1-1/4)	4	F004	1/4-20 Keps Nut	3	
13	8243-1	Clutch Idler Pulley	1	F005	1/4-20 ESNA Nut	1	
	8243	Clutch Idler Pulley Assembly (Includes Items # 14, 15 & F070)	*	F009	5/16-18 Whiz Locknut	3	
14	5265	Bearing (3/4)	1	F012	3/8-16 Keps Nut	6	
15	8243-3	Hub, Idler Pulley	1	F029	1/4-20 x 1/2 Hex Bolt	1	
16	8375	PTO Belt Tightener Stop	1	F041	3/8-16 x 1-3/4 Hex Bolt	2	
17	7377	Plastic Washer (1 x .438 x .025)	2	F042	3/8-16 x 2-1/4 Hex Bolt	3	
18	7378	Pivot Bearing (7/16 x 9/16)	1	F043	3/8-16 x 3 Hex Bolt	1	
19	5281-5	Clevis Pin (1/4 x 0.80)	2	F047	3/8-16 x 4-1/2 Hex Bolt	1	
20	5280	Clevis (1/4)	2	F054	AN960616 Washer	3	
21	8305	Brake Actuator Rod	1	F061	1/4 Internal Star Lock Washer	1	
22	8370	Bearing, Brake Actuator	1	F067	3/16 x 3/16 x 1 Key	2	
23	8250	Brake Spring (1/2 x 2-1/2)	1	F069	3/32 x 1/2 Cotter Pin	3	
24	8369	Brake Actuator (Includes Items # 2 & 22)	1	F070	1-3/4 Internal Snap Ring	1	
PTO Drive Shaft Assembly				F090	1/4-20 x 2-1/2 Hex Bolt	1	
25	7050-1	Dipstick, Gearbox	1	F116	1/4-20 x 1-1/4 Hex Bolt	1	
26	8371-1	Mount Bracket, Brake Band	1	F121	5/16-18 x 3/8 x 1 SHL Bolt	1	
27	8377	Brake Band Guide	1	F131	5/16-18 x 1/2 Hex Bolt	2	
28	8050-11	PTO Gearbox / Flange Pulley	1	F132	1/4-20 x 2-3/4 Hex Bolt	1	
29	7248	Ground Drive Belt, Micro-V	1	F168	5/16 Split Lock Washer	10	
30	7275-16	Universal Joint Tube Assembly / Spline	1	F171	5/16-18 x 3/8 Set Screw	4	
31	7523-2	Clevis Pin W/Hole (1/4 x 5/8)	1	F178	1/4 x 1 Fender Washer	1	
32	8304	Brake Band (14-1/2)	1	F182	1/4 x 5/8 x 1/8 Washer	2	
33	6250-1	Drive Belt (3VX370)	1	F226	5/16-18 x 7/8 Hex Bolt	14	
34	7236-1	PTO Drive Pulley (4-1/2/3V) (Includes Items # F168 & F226)	1	F241	.375 x .875 x .10 Washer	1	
35	8237-3	Engine Pulley (4/3.8/3V) (Includes Item # F226)	1	F255	5/16-18 x 1-1/2 Hex Bolt	2	
36	8230	Engine PTO Belt	1	F261	AN960616L Washer	1	
Jackshaft Assembly				F336	3/8-16 Jam Nut	1	
37	7245-1	Idler Pulley (3/8 Groove)	1	F353	3/8-16 ESNA LP Nut	1	
38	6325-2	Spacer Bushing (5/16)	2	* Service Part Only			
39	8349-4	Idler Arm	1				
40	7201-4	Inner Race (1-1/2)	2				

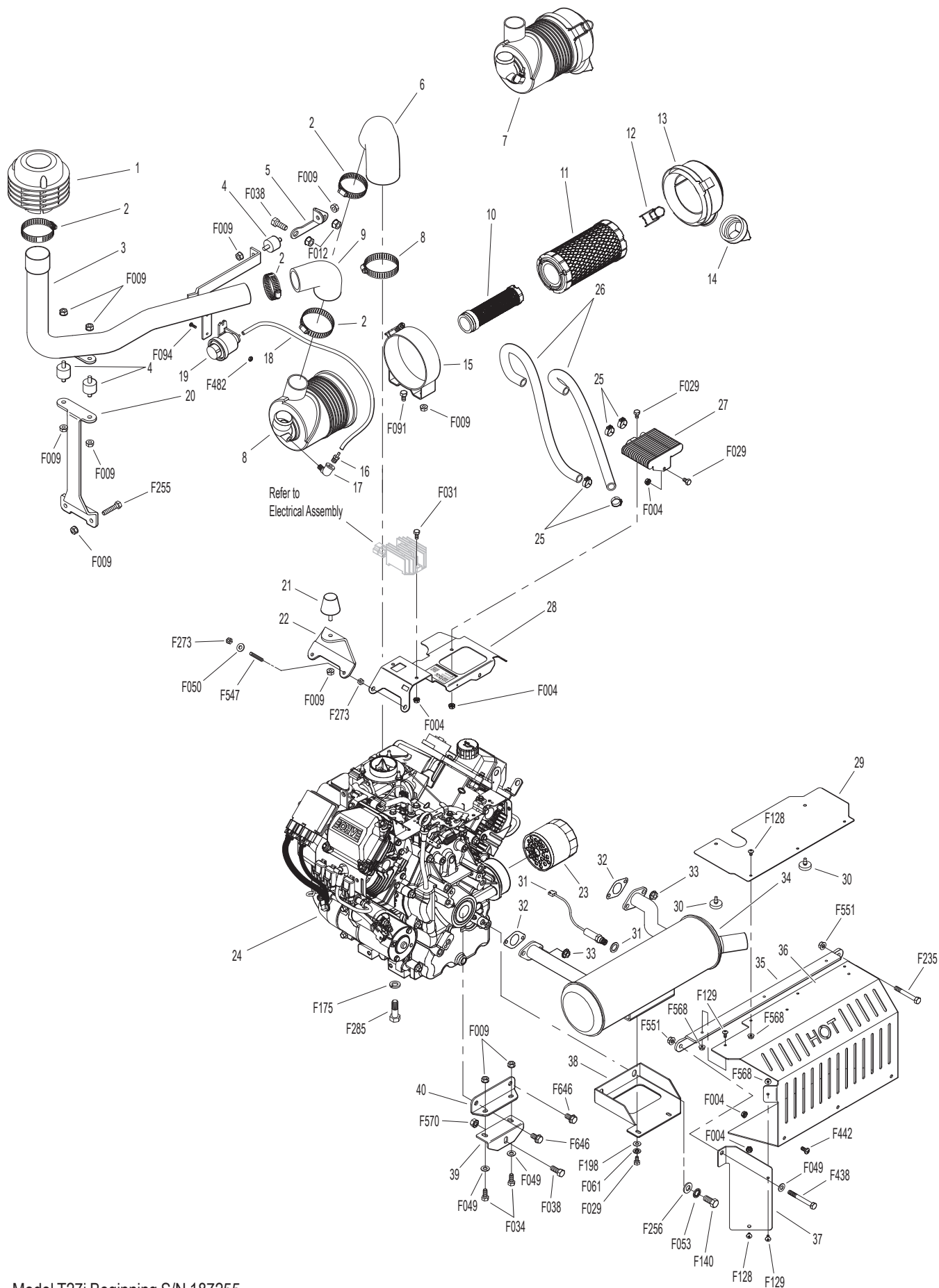
MAIN COMPONENT POWER TRANSMISSION (NON-COLLECTION MODELS)

ITEM NO.	PART NO.	DESCRIPTION	NO. REQ'D	ITEM NO.	PART NO.	DESCRIPTION	NO. REQ'D
Clutch Lever Assembly				42	8539	Starter Relay Mount	1
1	8358-3	Clutch Lever (Includes Items # 2 & 3)	1	43	5268	Bearing W/Collar (3/4)	2
2	5830	Grease Fitting	8	44	7241-2	Transmission Drive Pulley (3-1/4MV) (Includes Items # F067 & F171)	1
3	4850	Handle Grip, Black	1	45	7833	Cable Clamp (7/8 x 1/4)	1
4	7303-10	Clutch Actuator Bolt (3/8)	1	46	7394-6	Idler Pulley Spring Mount	1
5	7380-5	Knuckle Joint (3/8 ID)	1	47	8349	Transmission Belt Tightener Arm	1
6	7226-10	Compression Spring (3/4 x 2-1/2)	1	48	5245	Idler Pulley (3")	1
7	8130-5	Pushrod, Clutch Actuator (Threaded Tube) (Includes Item # 2)	1	49	8394-6	Hydro Jackshaft Mount Assembly (Includes Items # 2, 9, 12, 40, 43, 50, F012, F042, F067 & F171)	*
8	8130-10	Clutch Actuator Rod Assembly (Includes Items # 2, 4-7, F054, F336 & F353)	1	50	8273-1	Jackshaft (3/4 x 8-1/8)	1
9	7201-3	Fiberglide Bearing	6	51	7240-7	Jackshaft Drive Pulley (3.3/3V) (Includes Items # F067 & F171)	1
10	7201-5	Inner Race (2-1/4)	1	Fasteners			
11	8368	PTO Belt Tightener	1	F003	1/4-28 Hex Nut		2
12	5841	Retainer Washer (3/8 x 1-1/4)	4	F004	1/4-20 Keps Nut		3
13	8243-1	Clutch Idler Pulley	1	F005	1/4-20 ESNA Nut		1
	8243	Clutch Idler Pulley Assembly (Includes Items # 13-15 & F070)	*	F009	5/16-18 Whiz Locknut		3
14	5265	Bearing (3/4)	1	F012	3/8-16 Keps Nut		6
15	8243-3	Hub, Idler Pulley	1	F029	1/4-20 x 1/2 Hex Bolt		1
16	8375	PTO Belt Tightener Stop	1	F041	3/8-16 x 1-3/4 Hex Bolt		2
17	7377	Plastic Washer (1 x .438 x .025)	2	F042	3/8-16 x 2-1/4 Hex Bolt		3
18	7378	Pivot Bearing (7/16 x 9/16)	1	F043	3/8-16 x 3 Hex Bolt		1
19	5281-5	Clevis Pin (1/4 x 0.80)	2	F047	3/8-16 x 4-1/2 Hex Bolt		1
20	5280	Clevis (1/4)	2	F054	AN960616 Washer		3
21	8305	Brake Actuator Rod	1	F061	1/4 Internal Star Lock Washer		1
22	8370	Bearing, Brake Actuator	1	F067	3/16 x 3/16 x 1 Key		2
23	8250	Brake Spring (1/2 x 2-1/2)	1	F069	3/32 x 1/2 Cotter Pin		3
24	8369	Brake Actuator (Includes Items # 2 & 22)	1	F070	1-3/4 Internal Snap Ring		1
PTO Drive Shaft Assembly				F090	1/4-20 x 2-1/2 Hex Bolt		2
25	7050-1	Dipstick, Gearbox	1	F116	1/4-20 x 1-1/4 Hex Bolt		1
26	8371-1	Mount Bracket, Brake Band	1	F121	5/16-18 x 3/8 x 1 SHL Bolt		1
27	8377	Brake Band Guide	1	F131	5/16-18 x 1/2 Hex Bolt		2
28	8050-11	PTO Gearbox / Flange Pulley	1	F168	5/16 Split Lock Washer		10
29	7248	Ground Drive Belt, Micro-V	1	F171	5/16-18 x 3/8 Set Screw		4
30	7275-16	Universal Joint Tube Assembly / Spine	1	F178	1/4 x 1 Fender Washer		1
31	7523-2	Clevis Pin W/Hole (1/4 x 5/8)	1	F182	1/4 x 5/8 x 1/8 Washer		2
32	8304	Brake Band (14-1/2)	1	F226	5/16-18 x 7/8 Hex Bolt		14
33	6250-1	Drive Belt (3VX370)	1	F241	.375 x .875 x .10 Washer		1
34	7236-1	PTO Drive Pulley (4-1/2/3V) (Includes Items # F168 & F226)	1	F255	5/16-18 x 1-1/2 Hex Bolt		2
35	8237-3	Engine Pulley (4/3.8/3V) (Includes Item # F226)	1	F261	AN960616L Washer		1
36	8230	Engine PTO Belt	1	F336	3/8-16 Jam Nut		1
Jackshaft Assembly				F353	3/8-16 ESNA LP Nut		1
37	7245-1	Idler Pulley (3/8 Groove)	1	* Service Part Only			
38	6325-2	Spacer Bushing (5/16)	2				
39	8349-4	Idler Arm	1				
40	7201-4	Inner Race (1-1/2)	2				
41	5221-1	Extension Spring (3/4 x 5)	2				

ENGINE GROUP

ITEM NO.	PART NO.	DESCRIPTION	NO. REQ'D	ITEM NO.	PART NO.	DESCRIPTION	NO. REQ'D
Precleaner Assembly				Fasteners			
1	7026-3	Remote Precleaner (Includes Item # 2)	1	F004		1/4-20 Keps Nut	8
2	7840-5	Hose Clamp (1.56 - 2.50)	4	F009		5/16-18 Whiz Locknut	13
3	7028-5	Precleaner Tube (1-3/4)	1	F012		3/8-16 Keps Nut	2
4	7440	Shock Mount (1 x 3/4)	3	F029		1/4-20 x 1/2 Hex Bolt	4
5	7028-20	Rear Precleaner Mount	1	F031		1/4-20 x 5/8 Hex Bolt	2
6	8026-17	Air Intake Hose	1	F034		5/16-18 x 3/4 Hex Bolt	2
7	6090-11	Air Cleaner Assembly (Includes Items # 10-14, 16 & 17)	*	F038		3/8-16 x 1 Hex Bolt	3
8	6029	Hose Clamp (1-13/16 - 2-3/4)	1	F049		5/16 SAE Washer	3
9	7032	Elbow, Precleaner	1	F050		1/4 SAE Washer	2
10	5090-3	Safety Filter Insert	1	F053		7/16 Int. Star Lock Washer	2
11	5090-1	Air Cleaner Cartridge	1	F061		1/4 Internal Star Lock Washer	2
12	5088-5	Air Cleaner Draw Latch	2	F091		5/16-18 x 5/8 Hex Bolt	2
13	5088-11	Air Cleaner Cap (Includes Item # 12)	1	F094		8-32 x 1/2 PTHMS	2
14	5090-2	Vacuator Valve	1	F128		10-24 x 3/8 PTHMS	4
15	5088-3	Air Cleaner Band	1	F129		10-24 x 1/2 PTHMS	4
16	5091-0	1/8 Pipe Thread Male W/Barb	1	F140		7/16-14 x 1 Hex Bolt	2
17	5091-16	Street Elbow 90° (1/8 x 1/8)	1	F175		1/2 Split Lock Washer	4
18	M258	Vacuum Hose (7")	1**	F198		.250 x .625 x .040 Washer, SS	2
19	5091-19	Air Flow Indicator W/Bracket	1	F235		5/16-18 x 2-1/2 Hex Bolt	1
20	7031-3	Tube Support Arm	1	F255		5/16-18 x 1-1/2 Hex Bolt	2
Engine Assembly				F256		7/16 SAE Washer	2
21	5845	Rubber Bumper (1.50 x 1.25)	1	F273		M6 x 1.0 Nut	4
22	8010-2	Engine Bumper Mount	1	F285		1/2-13 x 1-1/2 Hex Bolt	4
23	NS	Oil Filter	1***	F438		5/16-18 x 2-3/4 Hex Bolt	1
24	NS	27-hp EFI Engine	1	F442		1/4-20 x 5/8 PTHMS	3
Remote Oil Cooler Assembly				F482		8-32 Nylock Nut	2
25	NS	Clamp	4 ^Δ	F547		M6 x 1.0 x 45 Stud	2
26	NS	Oil Cooler Hose	2 ^Δ	F551		5/16-18 Flange Top Lock Nut	2
27	NS	Oil Cooler	1 ^Δ	F568		10-24 Flange Top Lock Nut	7
28	8016-8	Oil Cooler / Regulator Mount	1	F570		3/8-16 Flange Top Lock Nut	1
Exhaust Assembly				F646		3/8-16 x 3/4 Serrated Hex Bolt	2
29	8530-21	Grass Shield	1	* Service Part Only			
30	7307-9	Pull Through Bumper	2	** Required hose specifications: M258 - 7/64" ID automotive vacuum hose			
31	NS	Sensor, Oxygen (Kohler)	1 ^Δ	*** Refer to the Operator's Manual for recommended part number.			
32	NS	Gasket (Kohler)	2 ^Δ	Δ Use the engine model and spec number from Kohler to order this item.			
33	NS	Nut (Kohler)	4 ^Δ	NOTE: Refer to Kohler Engine Decal (NS) for Engine Identification Numbers.			
34	8013-11	Muffler (EFI)	1				
35	8013-44	Upright Support	1				
36	8013-45	Heat Shield, Muffler	1				
37	8013-43	Muffler Heat Shield Endcap	1				
38	8013-18	Muffler Brace	1				
39	8021-2	Engine Brace, Chassis	1				
40	8021-1	Engine Brace	1				

ENGINE GROUP



Model T27i Beginning S/N 187255
 Use only genuine **Walker**® replacement parts.

ENGINE GROUP (FUEL COMPONENTS)

ITEM NO.	PART NO.	DESCRIPTION	NO. REQ'D	ITEM NO.	PART NO.	DESCRIPTION	NO. REQ'D
Fuel Tank Assembly				Fasteners			
1	8055-1	Fuel Tank, 4.7 Gallon, Gas (Black) (Includes Items # 3-7, 28 & 30)	1	F002		10-24 Keps Nut	3
2	5082-4	2-1/4 Ratchet Fuel Cap	*	F004		1/4-20 Keps Nut	3
3	8055-2	Fuel Tank Gauge	1	F009		5/16-18 Whiz Locknut	2
4	8043-8	Roll Over Valve	1	F025		10-24 x 3/8 PPHMS	2
5	5977-7	Roll Over Grommet (.900 x 1-1/2)	1	F029		1/4-20 x 1/2 Hex Bolt	2
6	5083-8	Tank Tube (13")	1	F034		5/16-18 x 3/4 Hex Bolt	2
7	5083-1	Bushing, Rubber	1	F050		1/4 SAE Washer	3
8	5879-3	Hose Clamp (1/2)	3	F061		1/4 Internal Star Lock Washer	2
9	5975-3	Cable Tie (50# x 7")	2	F079		A/A66D Aluminum Pop Rivet	2
10	M113	Fuel Line (3/16 x 28")	1**	F128		10-24 x 3/8 PTHMS	1
11	7833	Cable Clamp (7/8 x 1/4)	2	F129		10-24 x 1/2 PTHMS	1
12	8018-4	Fuel Module Cover	1	F398		1/4-20 x 2 Hex Bolt	3
13	8018-7	Fuel Module Bracket	1				
14	8018-2	Fuel Bracket Spacer	3				
15	M113	Fuel Line (3/16 x 12")	1**				
16	5879-4	Hose Clamp (7/16)	1				
17	8046-16	Quick Connector 5/16 x 5/16 - 45°	1				
18	5879-2	Hose Clamp (7/16 Silver)	3				
19	5879-9	Stepless Ear Clamp (15.7)	2				
20	M246	Fuel Line (1/4 x 20.5")	1**				
21	M247	Fuel Line (5/16 x 6")	1**				
22	8046-14	Quick Connector, Male (5/16)	1				
23	NS	Clamp (Kohler)	1				
24	NS	Fuel Line, Engine (Kohler)	1				
25	5020-3	Fuel Filter, EFI (9-12 Micron)	*				
26	M246	Fuel Line (1/4 x 23")	1**				
27	8016-6	ECU Mount	1				
28	5086-7	Hose (1/4 x 6")	1				
29	8023	Fuel Tank Support	1				
30	5020-2	Fuel Filter, In Tank	1				

* Service Part Only

**** Required hose specifications:**

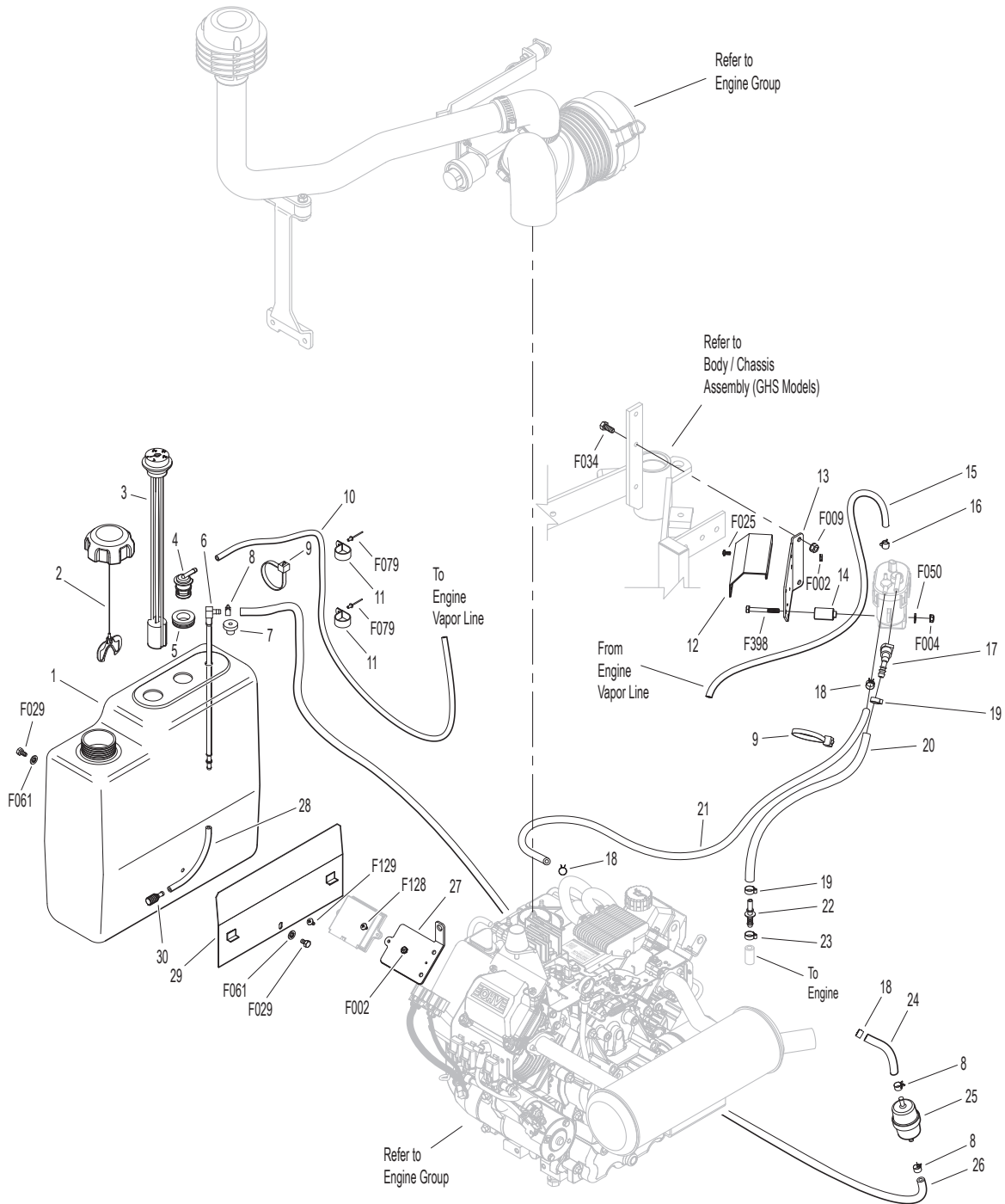
M113 - 3/16" ID fuel/oil/vapor hose (Gates 4219-0093 or equivalent)

M246 - 1/4" ID low permeation (<15g/m²/day) fuel hose (Parker 38904 or equivalent)

M247 - 5/16" ID low permeation (<15g/m²/day) fuel hose (Parker 38905 or equivalent)

NOTE: Refer to Kohler Engine Decal (NS) for Engine Identification Numbers.

ENGINE GROUP (FUEL COMPONENTS)

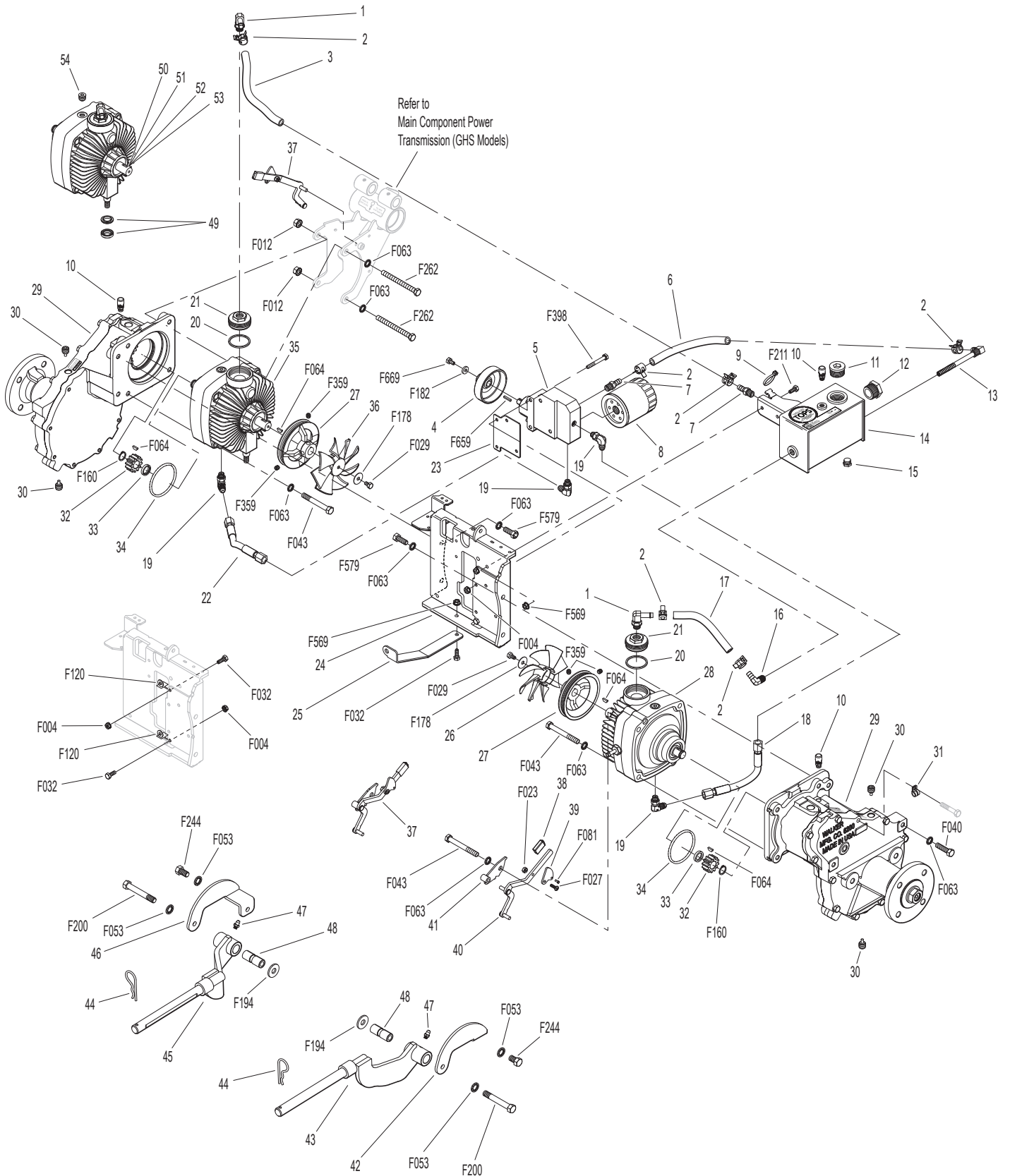


HYDROSTATIC GROUND DRIVE ASSEMBLIES

ITEM NO.	PART NO.	DESCRIPTION	NO. REQ'D	ITEM NO.	PART NO.	DESCRIPTION	NO. REQ'D
TOPS™ Components				40	5028-5	Lockout Lever	2
1	5024-22	3/8 Hose Barb x #6/ORB 90 Degree	2	41	5027-5	Lockout Mount	1**
2	5879-11	Hose Clamp (16mm)	6	Deck Support Arm Assemblies			
3	M358	High Temp Hose (3/8" x 8-1/4")	1	42	6430-10	Outboard Mount, LH	1
4	5024-30	Pulley	1	43	6431-1	Deck Support Arm, LH (Includes Item # 47)	1
5	5025-51	Hydro Pump Assembly (Includes Items # 7 & 19)	1	44	5775-2	Hitch Pin (# 6)	2
6	M358	High Temp Hose (3/8" x 8-3/4")	1	45	6431-2	Deck Support Arm, RH (Includes Item # 47)	1
7	5024-15	1/4-18 Pipe Thread, 3/8 Barb Fitting	2	46	6430-9	Outboard Mount, RH	1
8	5024-13	Transmission Oil Filter	1	47	5830	Grease Fitting	2
9	5975-3	Cable Tie (50# x 7")	1	48	6840-1	Support Arm Bushing (2-1/16)	2
10	6206-1	Air Vent Valve	3	Transmission Repair Parts			
11	5024-27	1-1/16"-12 Socket Plug Reservoir Cap	1	49	5025-16	Control Shaft Repair Kit	*
12	5024-25	Oil Reservoir Sight Gauge	1	50	5025-13	Hydro Input Shaft / Repair Kit (Includes Items # 51-53)	*
13	5024-9	90 Degree Fitting W/Filter	1	51	5025-8	Bearing, Input Shaft	*
14	5025-42	Oil Tank Reservoir Assembly (Includes Items # 7, 10-13 & 15-16)	1	52	5025-7	Snap Ring	*
15	7427-12	Brass Pipe Plug (1/4 NPTF)	1	53	NS	Seal, Input Shaft	*
16	5024-23	90 Degree Male Fitting, 3/8 Barb 1/4 Thread	1	54	5025-53	O-Ring & Plug	*
17	M358	High Temp Hose (3/8" x 6-1/2")	1	Fasteners			
18	5024-11	Left Hand Hose (7-3/8")	1	F004		1/4-20 Keps Nut	4
19	5024-10	Elbow, 90 Degree (1/2-20 x 9/16-18)	4	F012		3/8-16 Keps Nut	2
20	5022	Reservoir/Casting Gasket	2	F023		10-24 ESNA Nut	2
21	5024-7	Transmission Reservoir Adapter Fitting	2	F027		10-24 x 5/8 PPHMS	2
22	5024-12	Right Hand Hose (9-3/8")	1	F029		1/4-20 x 1/2 Hex Bolt	2
Ground Drive Assemblies				F032		1/4-20 x 3/4 Hex Bolt	3
23	6209-11	Bridge Spacer Plate	1	F040		3/8-16 x 1-1/2 Hex Bolt	4
24	6209-8	Bridge Assembly (Includes Items # 23, F004, F032 & F120)	1***	F043		3/8-16 x 3 Hex Bolt	6
25	6243-6	Fan Guard	1	F053		7/16 Internal Star Lock Washer	4
26	6243-1	Hydro Fan, CW	1	F063		3/8 Internal Star Lock Washer	17
27	7244	Hydro Pulley (3-7/8/MV) (Includes Items # F064 & F359)	2	F064		1/8 x 1/2 Woodruff Key (#3)	4
28	5026-34	Hydrostatic Drive, CW	1	F081		A/A45D Aluminum Pop Rivet	2
29	6200-9	Gear Axle Drive Assembly (Includes Items # 10 & 30)	2	F120		AN960416 Washer	2
30	6207-12	Pipe Plug (1/4 NPTF)	4	F160		External Snap Ring (.669 Shaft)	2
31	5126	Cable Retainer (Uses existing bolt on Gear Axle Drive Assembly)	1	F178		1/4 x 1 Fender Washer	2
32	6233-1	Pinion Gear	2	F182		1/4 x 5/8 x 1/8 Washer	1
33	6234	Spacer, Pinion Gear	2	F194		7/16 x 1-1/4 x 1/8 Washer	2
34	6201	O-Ring Seal	2	F200		7/16-20 x 3 Grade 8 Bolt	2
35	5025-34	Hydrostatic Drive, CCW	1	F211		1/4-20 x 7/8 Hex Bolt	2
36	6243-2	Hydro Fan, CCW	1	F244		7/16-20 x 3/4 Hex Bolt	2
Transmission Lockout Assembly				F262		3/8-16 x 4 Hex Bolt All Thread	2
37	5028-3	Transmission Lockout Assembly (Includes Items # 38-41, F023, F027 & F081)	*	F359		5/16-18 x 5/16 Set Screw (Knurl Point)	4
38	5847	Plastic Tip	2	F398		1/4-20 x 2 Hex Bolt	2
39	5057	Lockout Cam (Includes Item # F081)	2	F569		1/4-20 Flange Top Lock Nut	3
				F579		3/8-16 x 1 Hex Bolt Grade 8	4
				F659		1/8 x 1/8 x 3/4 Key	1
				F669		1/4-20 x 5/8 Hex Bolt W/Loctite	1

* Service Part Only
 ** Part not used on Jackshaft side of tractor.
 *** Includes Spacer Options—See Advisory Bulletin #23300.

HYDROSTATIC GROUND DRIVE ASSEMBLIES

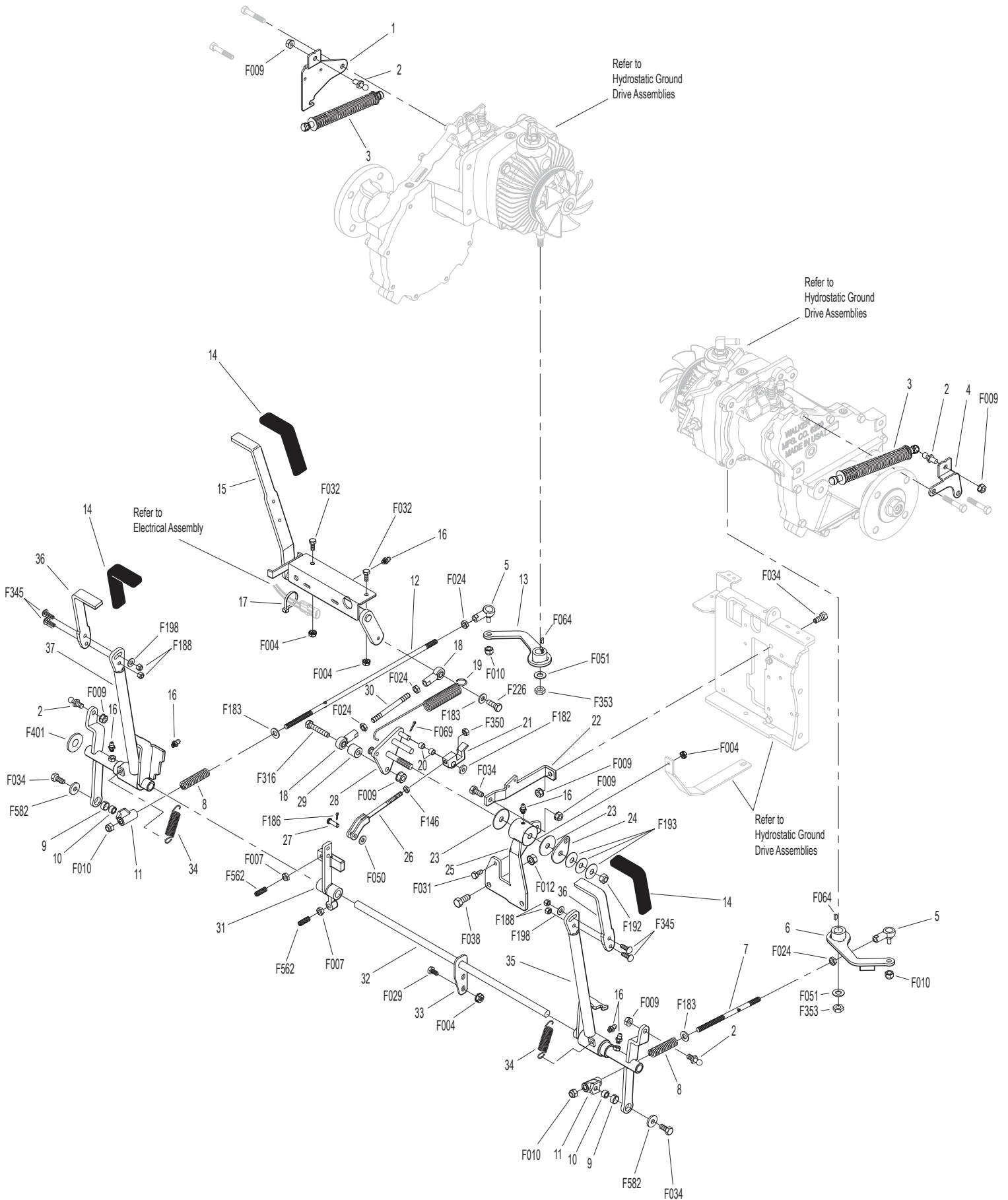


STEERING CONTROL ASSEMBLIES

ITEM NO.	PART NO.	DESCRIPTION	NO. REQ'D	ITEM NO.	PART NO.	DESCRIPTION	NO. REQ'D
Transmission Spring Assemblies				Steering Lever Assemblies			
1	6201-4	Shock Mount Gear Drive, RH	1	32	5217-1	Pivot Pin, Steering Lever	1
2	5146	10mm Ball Stud	4	33	5391-3	Steering Lever Support	1
3	5199-4	Steering Lever Dampener Assembly	2	34	5225-4	Extension Spring (5/8 x 2)	2
4	6201-3	Shock Mount Gear Drive, LH	1	35	5451-12	Steering Lever Assembly, LH / Adjustable (Includes Items # 2, 9-11, 16, 34, F009, F034 & F582)	1
5	5214-2	Ball Joint (5/16-24) Nylon Lined	2	36	5453-14	Steering Lever Handle, Adjustable (Includes Items # 14 & F345)	2
6	6212-7	Transmission Control Arm, LH	1	37	5450-12	Steering Lever Assembly, RH / Adjustable (Includes Items # 2, 9-11, 16, 34, F009, F034 & F582)	1
7	5213-3	Control Rod (6")	1				
8	5665-1	Compression Spring (2-1/2)	2				
9	7201-2	Fiberglide Bearing 1/2"	2				
10	5463-5	Steering Arm Pivot Bushing (SS)	2				
11	5463-7	Steering Lever Actuator	2				
12	5213-4	Control Rod (14-3/4")	1				
13	5212-7	Transmission Control Arm, RH	1				
Forward Speed Control Assemblies				Fasteners			
14	5850-2	Handle Grip, Foam (5-1/2)	3	F004	1/4-20 Keps Nut		5
15	7170-2	FSC Lever Assembly (Includes Item # 16)	1	F007	5/16-18 Jam Nut		2
16	5830	Grease Fitting	6	F009	5/16-18 Whiz Locknut		7
17	5975-3	Cable Tie (50# x 7")	1	F010	5/16-24 ESNA Nut		4
18	5214-4	Ball Joint (5/16-24) W/O Stud	2	F012	3/8-16 Keps Nut		2
19	5219	Extension Spring (3/4 x 6-3/4)	1	F024	5/16-24 Jam Nut		4
20	5172	Bearing, Delrin (.250 x .375 x .250)	2	F029	1/4-20 x 1/2 Hex Bolt		2
21	5141-1	FSC Actuator Block	1	F031	1/4-20 x 5/8 Hex Bolt		1
22	5140-9	FSC Brace	1	F032	1/4-20 x 3/4 Hex Bolt		2
23	5141	FSC Friction Washer (1-1/2 x 3/8 x 1/16)	2	F034	5/16-18 x 3/4 Hex Bolt		4
24	5142-8	FSC Key	1	F038	3/8-16 x 1 Hex Bolt		2
	5140-25	FSC Control Assembly (Includes Items # 16, 23-25, 28, F182, F192 & F193)	*	F050	1/4 SAE Washer		1
25	5140-35	FSC Friction Body (Includes Item # 16)	1	F051	3/8 SAE Washer		2
26	5141-2	FSC Actuator Rod	1	F064	1/8 x 1/2 Woodruff Key (#3)		2
27	5281-5	Clevis Pin (1/4 x 0.80)	1	F069	3/32 x 1/2 Cotter Pin		1
28	5142-9	FSC Actuator Cam	1	F146	1/4-20 Jam Nut		1
29	5141-3	Spacer (.750 x .313 x .688)	1	F182	1/4 x 5/8 x 1/8 Washer		1
30	5141-4	FSC Rod	1	F183	.312 x .700 x .074 Washer		3
31	5470-2	Speed Control Stop	1	F186	5/64 x 1/2 Cotter Pin		1
				F188	1/4-20 Self-Locking Nut		4
				F192	3/8-24 Self-Locking Nut		1
				F193	3/8 Belleville Spring Washer		3
				F198	.250 x .625 x .040 Washer, SS		2
				F226	5/16-18 x 7/8 Hex Bolt		1
				F316	5/16-18 x 1-3/4 Hex Bolt		1
				F345	1/4-20 x .770 Knurled Bolt		4
				F350	1/4-20 LP Nylock		1
				F353	3/8-16 ESNA LP Nut		2
				F401	.504 x .751 x .030 Washer		1
				F562	5/16-18 x 1 Set Screw		2
				F582	Washer 5/16 x 7/8 x .125		2

* Service Part Only

STEERING CONTROL ASSEMBLIES

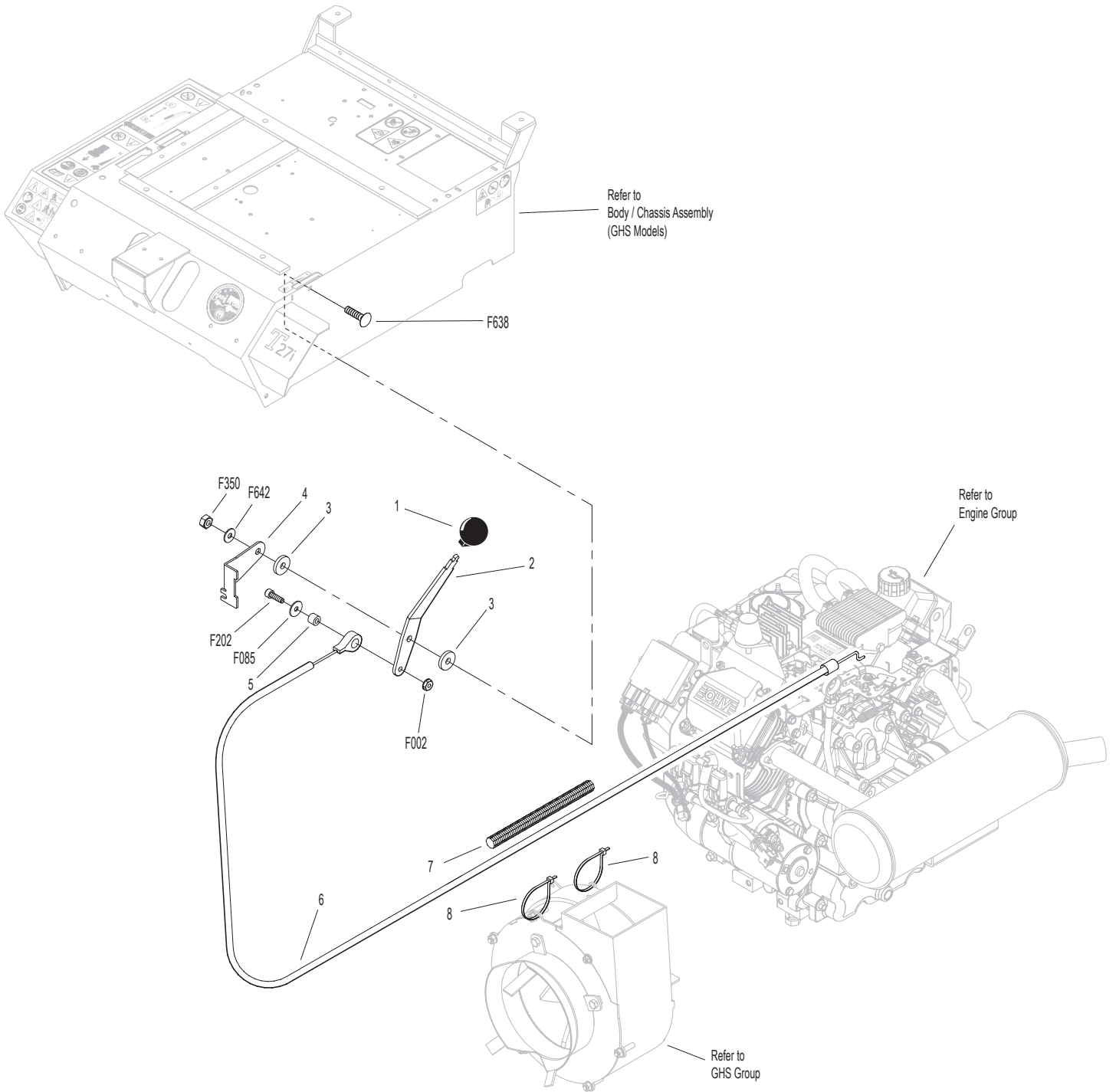


Model T27i Beginning S/N 187255
 Use only genuine **Walker**® replacement parts.

THROTTLE CONTROL ASSEMBLY

ITEM NO.	PART NO.	DESCRIPTION	NO. REQ'D	ITEM NO.	PART NO.	DESCRIPTION	NO. REQ'D
Throttle Control Assembly				Fasteners			
1	5108-5	Throttle Control Knob, Red	1	F002		10-24 Keps Nut	1
2	5108-31	Control Lever	1	F085		3/16 Rivet Backup Washer	1
3	5108-10	Friction Washer (.125)	2	F202		10-24 x 5/8 SHC Screw GR 5	1
4	5108-29	Control Bracket	1	F350		1/4-20 LP Nylock	1
5	5172-6	Bushing, SS (.375 x .188 x .290)	1	F638		1/4-20 x 1 Carriage Bolt	1
6	8121-1	Throttle Cable	1	F642		1/4 x .042 Belleville Washer	1
7	8123	Insulating Sleeve (3/8 x 6)	1				
8	5975-1	Cable Tie (18# x 3-3/4")	2				

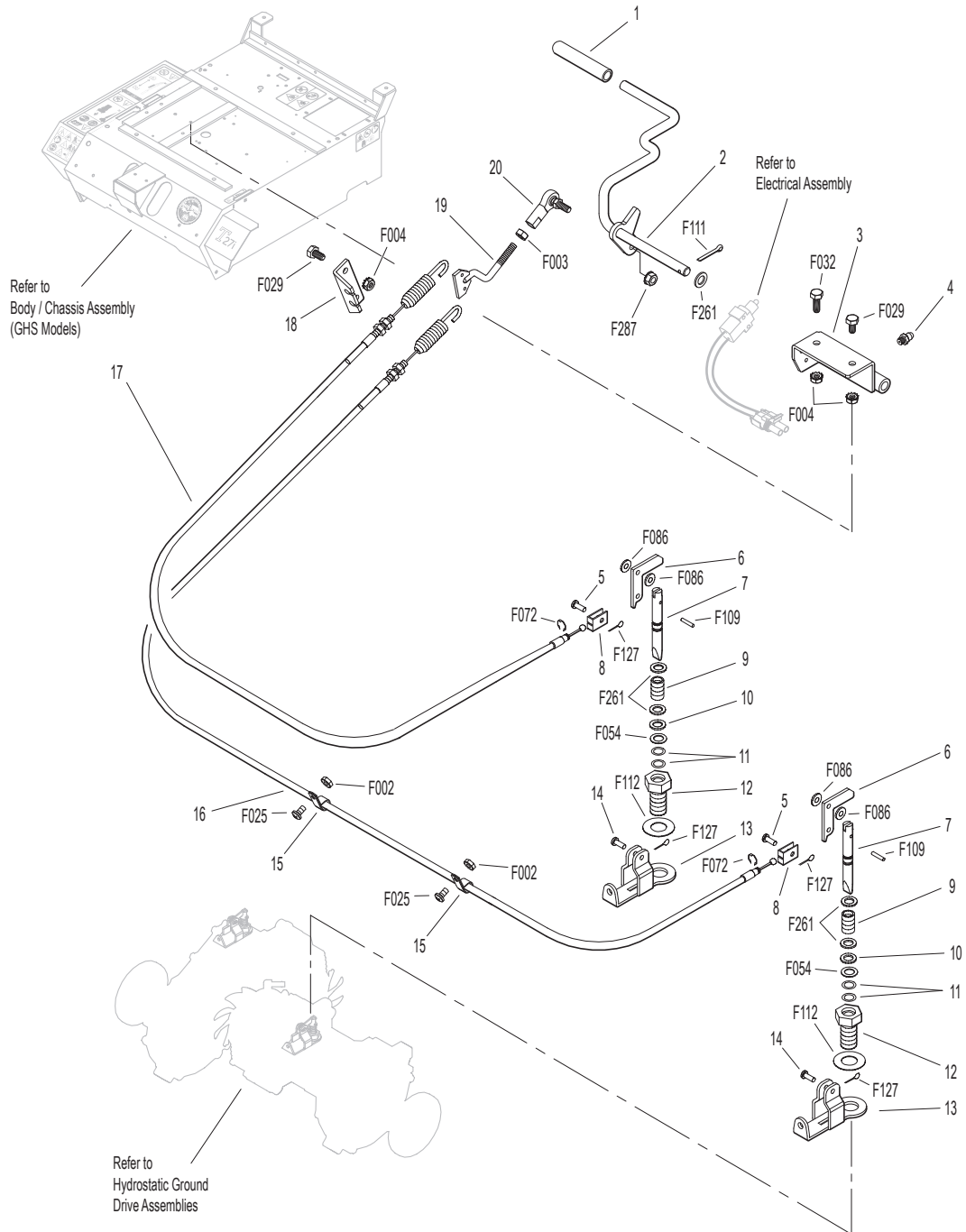
THROTTLE CONTROL ASSEMBLY



PARKING BRAKE ASSEMBLY

ITEM NO.	PART NO.	DESCRIPTION	NO. REQ'D	ITEM NO.	PART NO.	DESCRIPTION	NO. REQ'D
Parking Brake Assembly				Fasteners			
1	7406-1	Handle Grip, Red	1	F002		10-24 Keps Nut	2
2	7406-9	Parking Brake Lever	1	F003		1/4-28 Hex Nut	1
3	7406-10	Lever Mount	1	F004		1/4-20 Keps Nut	4
4	5830	Grease Fitting	1	F025		10-24 x 3/8 PPHMS	2
5	7407	Clevis Pin (3/16 x 1/2)	2	F029		1/4-20 x 1/2 Hex Bolt	3
6	7404-6	Brake Actuator Arm	2	F032		1/4-20 x 3/4 Hex Bolt	1
7	7405	Pin, Transmission Lock	2	F054		AN960616 Washer	2
8	7402	Clevis	2	F072		1/4 "E" Retainer Ring	2
9	7408	Compression Spring (1/2 x 3/4)	2	F086		#10 SAE Washer	4
10	7415	Rubber Dust Shield (5/8 x 3/8 x 1/32)	2	F109		1/8 x 5/8 Roll Pin	2
11	5567-3	O-Ring (1/4 x 3/8)	4	F111		1/8 x 3/4 Cotter Pin	1
12	7403	Plunger Bushing, Gear Axle	2	F112		5/8 x 1-1/4 x .03 Washer	2
13	7404-7	Brake Actuator Mount	2	F127		1/16 x 1/2 Cotter Pin	4
14	7412	Clevis Pin (3/16 x 5/8)	2	F261		AN960616L Washer	5
15	5833	Cable Clamp (1/4)	2	F287		1/4-28 Keps Nut	1
16	7410	Brake Control Cable, LH (25.5")	1				
17	7409	Brake Control Cable, RH (20.5")	1				
18	7401-3	Cable Mount Bracket	1				
19	7401-1	Cable Pull Rod	1				
20	5552	Ball Joint (1/4-28)	1				

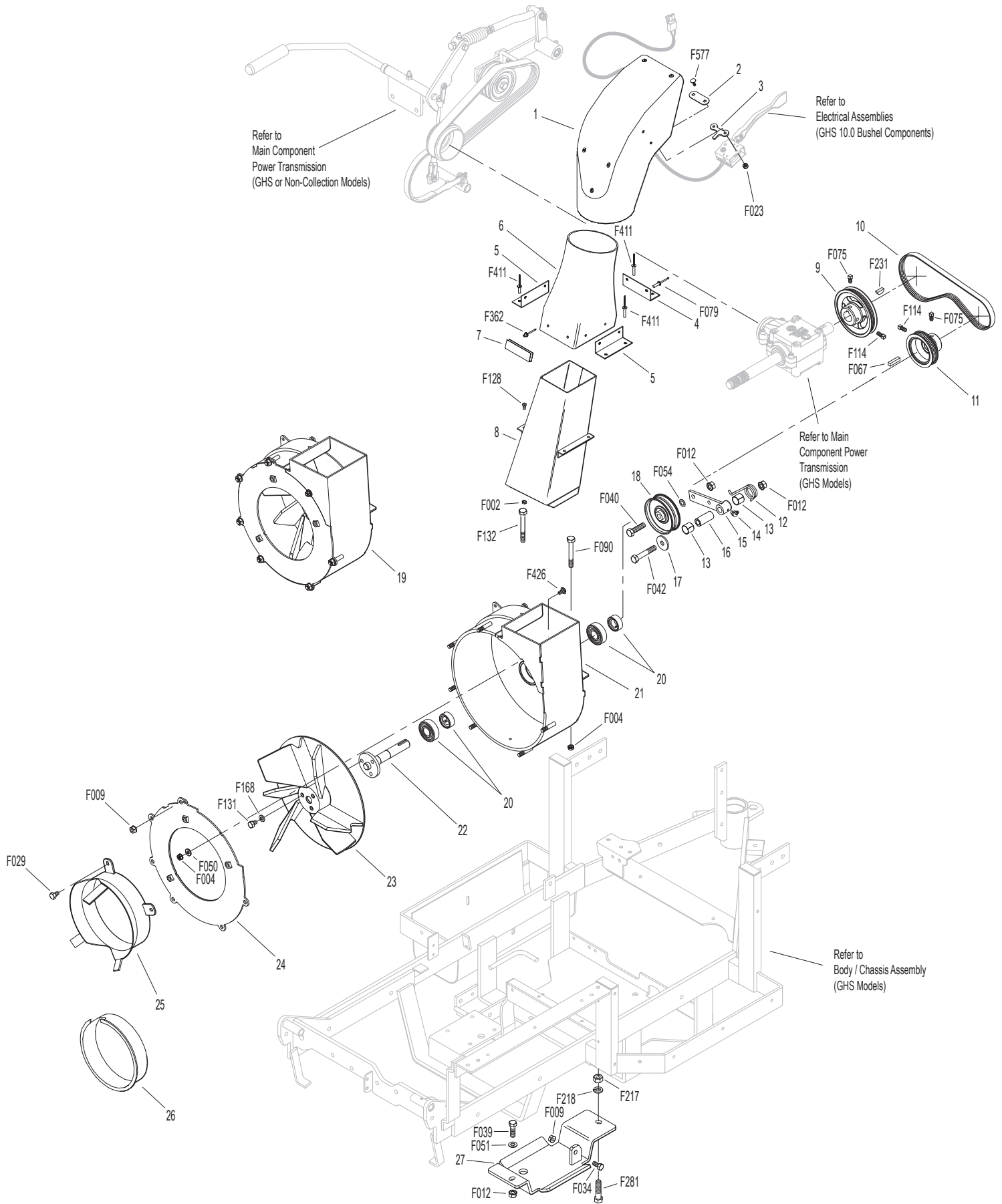
PARKING BRAKE ASSEMBLY



GHS GROUP

ITEM NO.	PART NO.	DESCRIPTION	NO. REQ'D	ITEM NO.	PART NO.	DESCRIPTION	NO. REQ'D
Delivery Chute Assembly				Fasteners			
1	5515-4	Elbow Delivery Spout	1	F002	10-24 Keps Nut		4
2	5592-24	Backing Plate, Grass-Pak® Switch	1	F004	1/4-20 Keps Nut		3
3	5592-23	Grass-Pak® Housing Spacer	1	F009	5/16-18 Whiz Locknut		7
4	5578	Rear Clip, Chute Mount	1	F012	3/8-16 Keps Nut		3
5	5577	Side Clip, Chute Mount	2	F023	10-24 ESNA Nut		2
6	8511-1	Delivery Chute W/Clips (Includes Items # 4, 5, 7, F362 & F411)	1	F029	1/4-20 x 1/2 Hex Bolt		3
7	5578-10	Front Clip, Chute Mount	1	F034	5/16-18 x 3/4 Hex Bolt		1
8	7530-4	Body Chute (10.5 Blower)	1	F039	3/8-16 x 1-1/4 Hex Bolt		1
Blower Belt Tightener Assembly				F040	3/8-16 x 1-1/2 Hex Bolt		1
9	7238-6	Blower Drive Pulley (Includes Items # F075, F114 & F231)	1	F042	3/8-16 x 2-1/4 Hex Bolt		1
10	7234-2	Blower Belt (Micro-V)	1	F050	1/4 SAE Washer		1
11	7239-1	Blower Pulley (Micro-V) (Includes Items # F067, F075 & F114)	1	F051	3/8 SAE Washer		1
12	7364-2	Torsion Spring	1	F054	AN960616 Washer		1
13	7201-3	Fiberglide Bearing	2	F067	3/16 x 3/16 x 1 Key		1
14	5830-3	Grease Fitting (45 Deg.)	1	F075	5/16-18 x 1/2 SQH Set Screw		2
15	7364-1	Blower Belt Tightener Arm	1	F079	A/A66D Aluminum Pop Rivet		6
16	7201-4	Inner Race (1-1/2)	1	F090	1/4-20 x 2-1/2 Hex Bolt		1
17	5841	Retainer Washer (3/8 x 1-1/4)	1	F114	5/16-18 x 5/8 SQH Set Screw		2
18	5245	Idler Pulley (3")	1	F128	10-24 x 3/8 PTHMS		4
Blower Assembly				F131	5/16-18 x 1/2 Hex Bolt		3
19	7544	Blower Assembly (10.5") (Includes Items # 20-24, F004, F009, F029, F050, F131, F168 & F426)	1	F132	1/4-20 x 2-3/4 Hex Bolt		1
20	5268	Bearing W/Collar (3/4)	2	F168	5/16 Split Lock Washer		3
21	7544-3	Blower Housing (10.5)	1	F217	7/16-14 Hex Nut		1
22	7545-2	Blower Output Shaft (10.5)	1	F218	7/16 Split Lock Washer		1
23	7545	Blower Wheel (10.5")	1	F231	1/4 x 3/4 Woodruff Key (# 806)		1
24	7543-1	Blower Faceplate (10.5)	1	F281	7/16-14 x 1-3/4 Hex Bolt		1
25	7526	Intake Tube (10.5 Blower)	1	F362	A/A62D Alum. Pop Rivet (3/16D x 13/32L)		2
26	5595-2	Intake Cover / GHS	1	F411	3/16 Bulbex Rivet		6
27	7528-5	Skid Bar	1	F426	1/4-20 x 1/2 Carriage Bolt		1
				F577	10-24 x 5/8 Carriage Bolt		2

GHS GROUP



Model T27i Beginning S/N 187255
 Use only genuine **Walker**® replacement parts.

GHS POWERFIL® ASSEMBLY

ITEM NO.	PART NO.	DESCRIPTION	NO. REQ'D	ITEM NO.	PART NO.	DESCRIPTION	NO. REQ'D
10.0 GHS Powerfil® Assembly				Fasteners			
1	5551-3	Bearing Cap, Powerfil®	1	F003		1/4-28 Hex Nut	2
2	5551-1	Pivot Bearing (#S3PP)	2	F023		10-24 ESNA Nut	10
3	5518-6	Pivot, Delivery Spout	1	F054		AN960616 Washer	2
4	5517-2	Pivot Mount	1	F085		3/16 Rivet Backup Washer	1
5	5552	Ball Joint (1/4-28)	2	F101		10-24 x 1-1/4 SHC Screw	1
6	5553-3	Bushing, Powerfil® Actuator	4	F109		1/8 x 5/8 Roll Pin	1
7	5553-1	Compression Spring (1/2 x 2)	2	F287		1/4-28 Keps Nut	2
8	5558-2	Powerfil® Actuator Rod	1	F612		10-24 x 5/8 Truss Head Torx	7
	5549	Actuator Rod Assembly (Includes Items # 5-8, F003, F287 & F704)	*	F613		10-24 x 1/2 Truss Head Torx	2
9	5554	Actuator Arm	1	F704		1/4-28 x 6-1/2 Hex Bolt, Grade 5 Clear Zinc	1
10	5519-3	Motor Mount Nut (5/8-24)	*				
11	5519-2	Motor Mount Washer	*				
12	5976-2	Grommet (3/16 x 3/4)	1				
13	5519-5	Actuator Motor (12V) (Includes Items # 10 & 11)	1				
				*		Service Part Only	

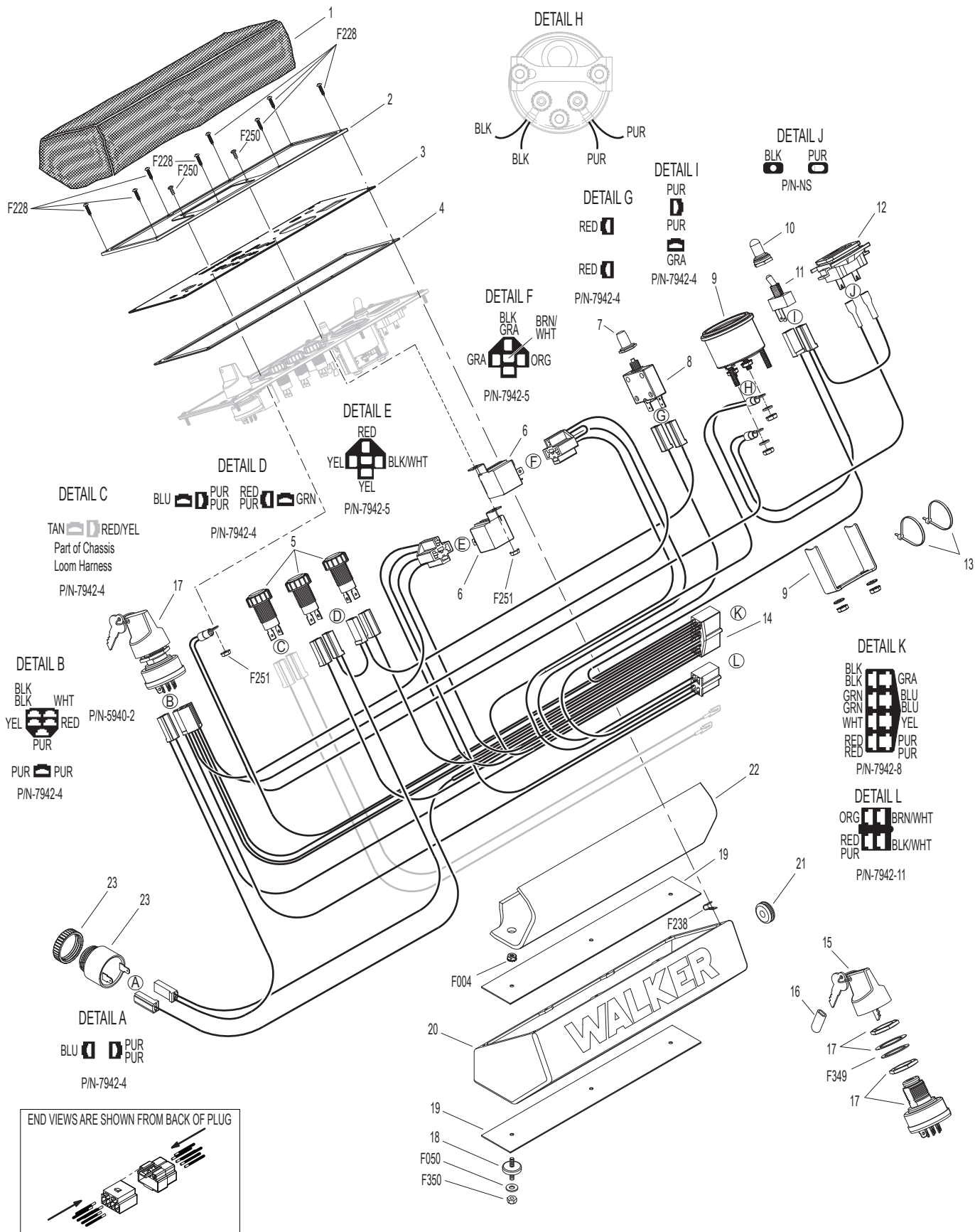
GHS 10.0 BUSHEL CATCHER ASSEMBLY

ITEM NO.	PART NO.	DESCRIPTION	NO. REQ'D	ITEM NO.	PART NO.	DESCRIPTION	NO. REQ'D
Upper Baffle Screen Assembly (Removable)				46	8117	Wire Harness Channel	1
1	7512-8	Removable Screen (3/16 Hole) (Includes Items # 2, 5, F190 & F617)	1**	47	5977-3	Grommet (9/16)	2
2	7506	Knob / Threaded Insert (10-24)	2	48	8602-3	10.0 Catcher W/O Powerfil®, Gray (Includes Door)	*
3	8606-3	Channel Top, LH	1		8602-4	10.0 Catcher W/Powerfil®, Gray (Includes Door)	*
4	8606-2	Channel Bottom	2		8610-5	10.0 Bushel Catcher Box, Gray	*
5	7856-1	Edge Molding (26")	1	49	8607-9	Powerfil® Cover Plate	1
6	7507	Screen Seal (27-1/2)	1	50	8155-2	Gas Spring Cover, RH	1
7	7505	Mustache Spring	2	51	8608-8	Hinge Plate, RH	1
8	8606	C-Channel (10.0)	1	52	8608-9	Torsion Bar	1
	8606-20	C-Channel With Spring (10.0) (Includes Items # 7, 8 & F340)	*	5598-2 Optional Dump Bag (Not Shown) May be ordered as an option. Contact your Walker dealer.			
9	8606-4	Channel Top, RH	1	Fasteners			
10.0 Exhaust Deflector Door Assembly					F020	5/16-18 ESNA Nut	2
10	8607-16	Upper Seal Support	1		F023	10-24 ESNA Nut	29
11	8607-17	Upper Door Seal	1		F024	5/16-24 Jam Nut	4
12	8607-18	Backup Plate	1		F029	1/4-20 x 1/2 Hex Bolt	8
13	8512-4	10.0 Catcher Box Door, Gray (Includes Items # 10-14, 16, 17, F085, F411, F649 & F654)	1		F032	1/4-20 x 3/4 Hex Bolt	2
14	5583	Handle	1		F049	5/16 SAE Washer	6
15	8607-1	Door Mount, LH	1		F050	1/4 SAE Washer	2
16	8607-12	Upper Door Stiffener	1		F068	1/8 x 1 Cotter Pin	2
17	8607-7	Lower Door Stiffener	1		F079	A/A66D Aluminum Pop Rivet	5
18	8607-8	Door Guide	1		F085	3/16 Rivet Backup Washer	6
19	8607-2	Door Mount, RH	1		F094	8-32 x 1/2 PTHMS	6
GHS 10.0 Bushel Catcher Assembly					F190	#10 Internal Star Lock Washer	2
20	8608-13	Center Strap	1		F195	1/4-20 x 3/4 PPHMS, SS	4
21	8608-3	Upper Frame Doubler	2		F196	1/4-20 x 1 PPHMS, SS	4
22	8608-1	Outside Box Strap	2		F208	5/16-18 x 2-1/4 Hex Bolt	2
23	8608-2	Lower Frame Doubler	2		F230	1/4-20 x 1-1/4 PPHMS, SS	4
24	8608-4	Center Frame Doubler	1		F242	1/4-20 x 7/8 PPHMS, SS	8
25	8608-11	Catcher Door Finger	1		F340	Rivet, Aluminum	4
26	8608-6	Catcher Mount	1		F351	Aluminum Pop Rivet	6
27	8610-8	Catcher Dump Flap	1		F360	1/4-20 x 3/8 Hex Bolt	2
28	8610-3	Backing Plate, Dump Flap	1		F390	1/4-20 x 7/8 Carriage Bolt	4
29	7584	Reinforcing Strap	1		F411	3/16 Bulbex Rivet	21
30	5103-5	Pivot Bushing Inner	2		F456	5/16-18 x 3/4 SBH Cap Screw, SS	4
31	5801-4	Decal Plate, Round	2		F524	3/16 x 3/8 Aluminum Rivet, Black	8
32	7620-3	Pivot Bushing (1/2 x 9/16)	2		F540	1/4-20 x 1-3/4 PPHMS, SS	1
33	8608-7	Hinge Plate, LH	1		F551	5/16-18 Flange Top Lock Nut	4
34	5103-7	Outside Torsion Bushing	2		F568	10-24 Flange Top Lock Nut	1
35	8607-4	Upper Arm	2		F569	1/4-20 Flange Top Lock Nut	27
36	5214-12	Ball Joint (5/16-24)	4		F612	10-24 x 5/8 Truss Head Torx	8
37	5155-12	5/16 Ball Stud	2		F613	10-24 x 1/2 Truss Head Torx	11
38	5155-4	Gas Spring	2		F617	10-24 x 3/8 Truss Head Torx	4
39	8155-1	Gas Spring Cover, LH	1		F618	10-24 x 3/4 Truss Head Torx	6
40	8607-3	Lower Arm	2		F649	3/16 x .510/.625 Grip Range Rivet, SS	4
41	5103-6	Pivot Bushing Outer	2		F654	3/16 x .510/.625 Grip Range Rivet	7
42	5155-13	3/4 Ball Stud	2	*	Service Part Only		
43	5523-6	Gas Spring Plate	2	**	This screen can be replaced by P/N 7512-11 Removable Screen (3/4" holes) for improved air flow performance in wet conditions.		
44	8608-10	Box Support, Gas Spring	2				
45	7532-1	Handle, Catcher Lift	2				

INSTRUMENT PANEL ASSEMBLY

ITEM NO.	PART NO.	DESCRIPTION	NO. REQ'D	ITEM NO.	PART NO.	DESCRIPTION	NO. REQ'D
Instrument Panel Assembly				18	7307-1	Shock Mount (1.0 x .25)	3
1	7307-2	Instrument Panel Cover (Optional)	**	19	7391	Panel Box Mount Plate	2
	8306-5	Instrument Panel Assembly (Includes Items # 2-12, 14, 17, 23, F228, F250, F251 & F349)	1	20	8385	Panel Box W/Graphic	1
2	7307-7	Panel Frame	1	21	7977-3	Grommet (1/8 x 1-1/8)	1
3	8820-7	Panel Faceplate W/Decal	1	22	7307-16	Lining, Panel Box (1/8)	1
4	7386	Panel Gasket	1	23	8536	Warning Horn	1
5	8996-9	Red Indicator Light Assembly	3	Fasteners			
6	6941-9	Relay Switch 30/40 Amp	2		F004	1/4-20 Keps Nut	3
7	7941-3	Boot, Circuit Breaker	1		F050	1/4 SAE Washer	3
8	7941-5	Circuit Breaker (7 Amp)	1		F228	#6 x 5/8 PPHSMS, SS	8
9	8997	Voltmeter Gauge	1		F238	J Clip, Instrument Panel	8
10	5995-2	Switch Boot	1		F250	6-32 x 1/2 PPHMS	2
11	5995	Toggle Switch (Off-On)	1		F251	6-32 Keps Nut	2
12	8990-1	Hourmeter (Global)	1		F349	Washer .835 ID, 1.122 OD, SS	1
13	5975-1	Cable Tie (18# x 3-3/4")	2		F350	1/4-20 LP Nylock	3
14	8945-3	Wire Harness, Instrument Panel	1	* Service Part Only			
15	8960-3	Key Set W/Umbrella	*	** May be ordered as an option. Contact your Walker dealer.			
16	7854	Plastic Tip, Red	1				
17	8960-15	Ignition Switch (With Keys) (Includes Items # 15, 16 & F349)	1				

INSTRUMENT PANEL ASSEMBLY



Model T27i Beginning S/N 187255
 Use only genuine **Walker**® replacement parts.

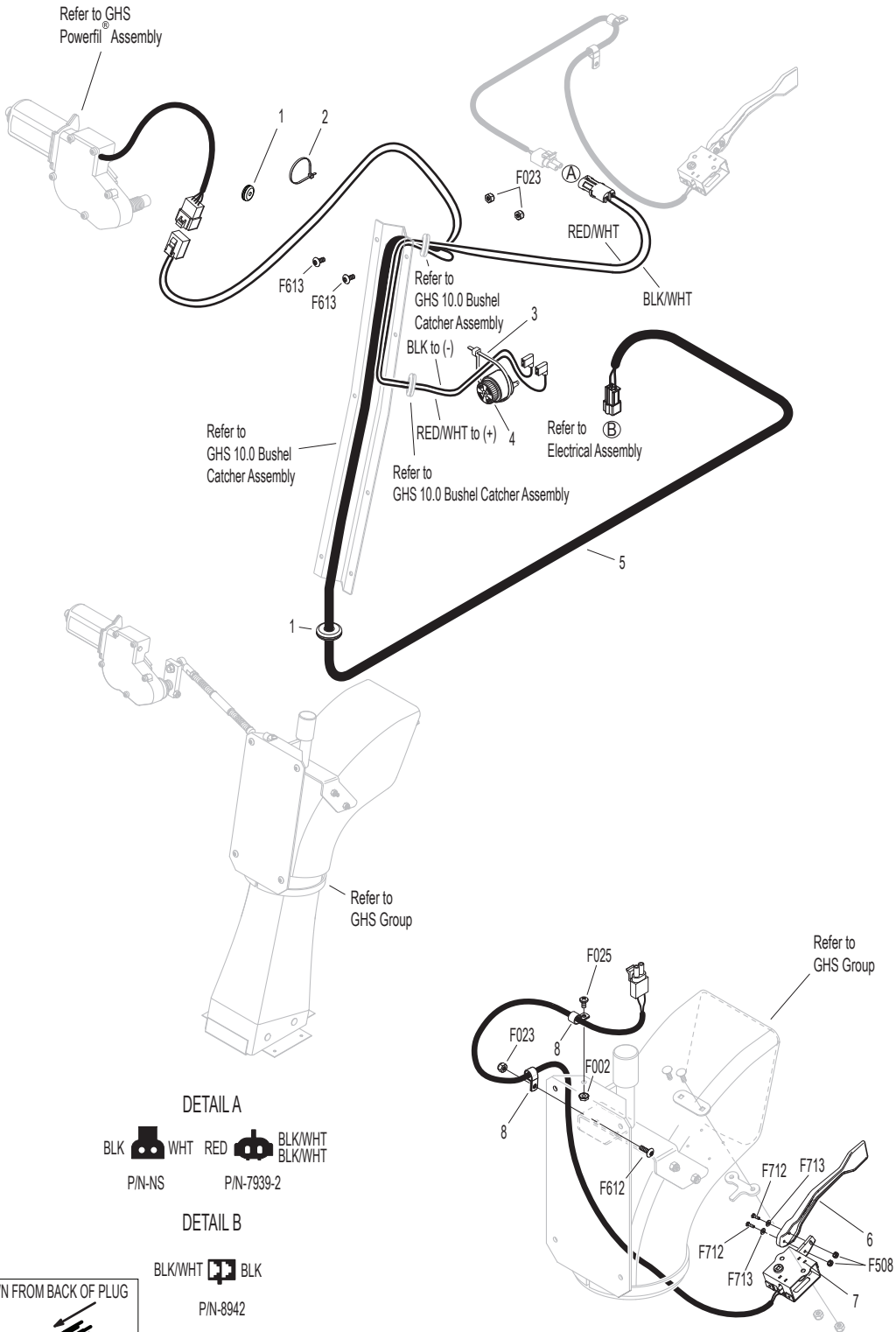
ELECTRICAL ASSEMBLY

ITEM NO.	PART NO.	DESCRIPTION	NO. REQ'D	ITEM NO.	PART NO.	DESCRIPTION	NO. REQ'D
Harness Assembly				Fasteners			
1	5975-3	Cable Tie (50# x 7")	7	F002		10-24 Keps Nut	6
2	5942-4	Safety Switch (Normal Open)	1	F004		1/4-20 Keps Nut	4
3	5833	Cable Clamp (1/4)	1	F009		5/16-18 Whiz Locknut	1
4	8940-32	Wire Harness	1	F019		1/4-20 ESNA Wing Nut	2
5	7833	Cable Clamp (7/8 x 1/4)	2	F025		10-24 x 3/8 PPHMS	3
6	5832	Cable Clamp (1/2)	1	F026		10-24 x 1/2 PPHMS	2
7	8012-5	Regulator Adapter Harness	1	F031		1/4-20 x 5/8 Hex Bolt	2
8	NS	Rectifier	*	F032		1/4-20 x 3/4 Hex Bolt	2
9	8012-7	Ground Wire	1	F050		1/4 SAE Washer	2
10	8016-12	Diagnostic Extension Wire	1	F061		1/4 Internal Star Lock Washer	1
11	7833-2	Cable Clamp (1 x 1/4)	2	F063		3/8 Internal Star Lock Washer	1
12	6941-9	Relay Switch 30/40 Amp	1	F079		A/A66D Aluminum Pop Rivet	2
13	7948-6	Time Delay Module	1	F085		3/16 Rivet Backup Washer	1
14	7948-5	Time Delay Harness	1	F093		5/16-18 x 1 Hex Bolt	1
15	7941-10	Circuit Breaker Cap	1	F106		3/8-16 x 5/8 Hex Bolt	1
16	8941	Circuit Breaker (30 Amp) Auto Reset / Sealed	1	F124		10-32 x 3/8 Taptite Machine Screw	2
17	8943	Battery Lead Wire (+)	1	F129		10-24 x 1/2 PTHMS	1
18	5975-1	Cable Tie (18# x 3-3/4")	3	F182		1/4 x 5/8 x 1/8 Washer	2
19	5942-16	Safety Switch (Normal Open), Delta WP	2	F232		10-32 Keps Nut	2
20	6104-13	Adapter Harness	1	F505		6-32 x 7/8 Hex Trim MS, SS	4
21	5977-6	Grommet (1 x 1-1/4)	1	F506		6-32 Nylock Nut	4
22	6105-3	Harness Clip	1				
23	6104-11	Seat Switch (NO)	1				
Battery Assembly				* Service Part Only			
24	6923	Battery Cable (-)	1				
25	5933	Battery Terminal Insul., Red (+)	1				
26	5844-3	Battery Hold-Down Bar	1				
27	5839	Hook Bolt	2				
28	6390-6	Battery Pan	1				
29	NS	Battery (12V/350 CCA/Dry/SP-40)	1				
30	5932	Battery Terminal Insul., Black (-)	1				
31	7834-2	Wire Saddle (2 Wires)	1				

ELECTRICAL ASSEMBLIES (GHS 10.0 BUSHEL COMPONENTS)

ITEM NO.	PART NO.	DESCRIPTION	NO. REQ'D	ITEM NO.	PART NO.	DESCRIPTION	NO. REQ'D
Horn & Harness Channel Assemblies				Fasteners			
1	5977-2	Grommet, Cut (1/8 x 3/8)	2	F002		10-24 Keps Nut	1
2	5975-1	Cable Tie (18# x 3-3/4")	1	F023		10-24 ESNA Nut	3
3	5975-3	Cable Tie (50# x 7")	1	F025		10-24 x 3/8 PPHMS	1
4	5536-2	Horn, Full Signal	*	F508		4-40 Keps Nut, SS	2
Harness & Grass-Pak® Switch Assemblies				F612		10-24 x 5/8 Truss Head Torx	1
5	8950-4	Powerfil® Wire Harness (7.0 / 10.0)	1	F613		10-24 x 1/2 Truss Head Torx	2
6	5594-7	Grass-Pak® Vane	1	F712		4-40 x 3/8 Hex Head, SS	2
7	5592-20	Grass-Pak® Switch Assembly	1	F713		Washer #4, SS	2
8	5833	Cable Clamp (1/4)	2	* Service Part Only			

ELECTRICAL ASSEMBLIES (GHS 10.0 BUSHEL COMPONENTS)

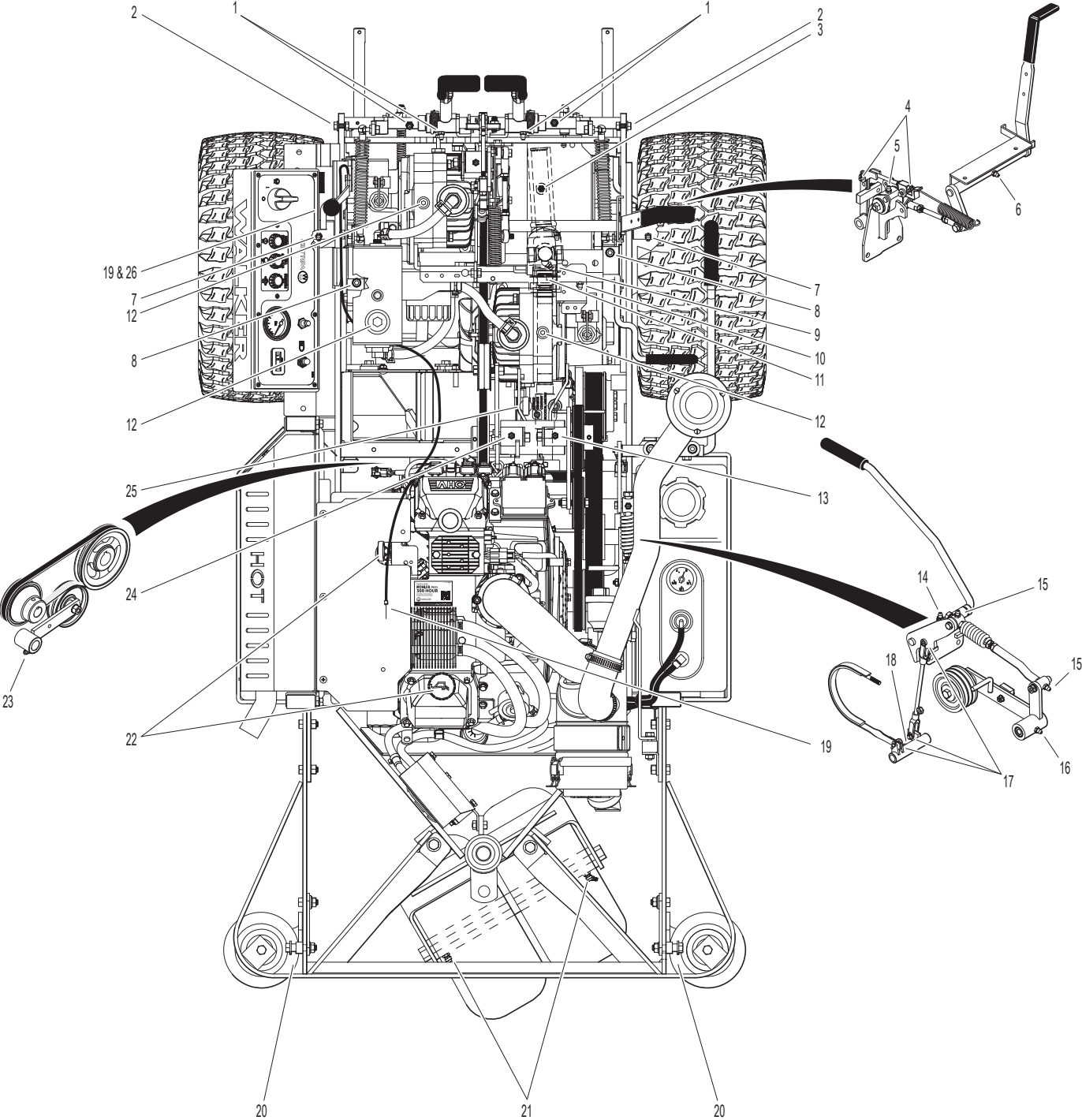


Model T27i Beginning S/N 187255
 Use only genuine Walker® replacement parts.

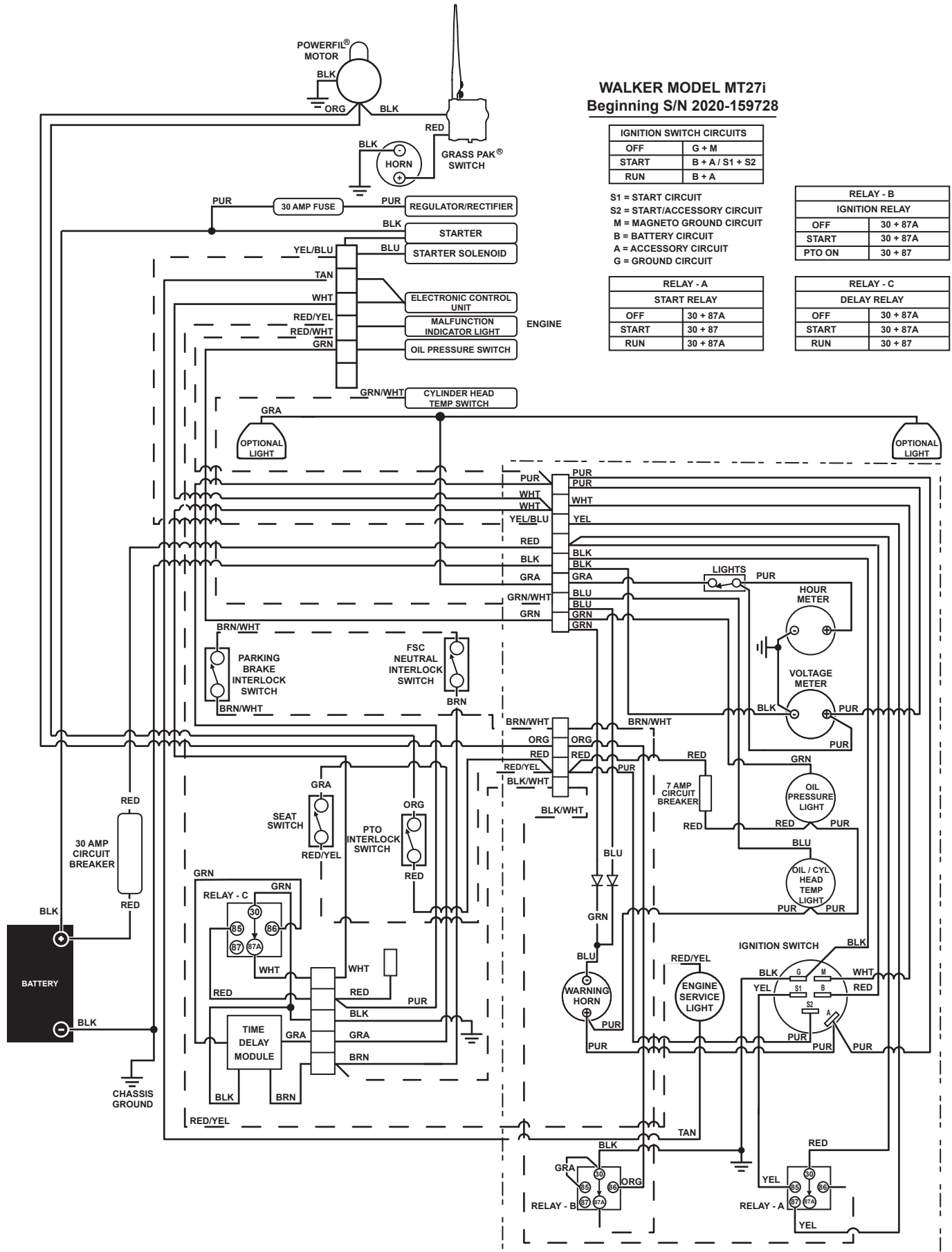
LUBRICATION POINTS

ITEM NO.	LOCATION	LUBRICATION TYPE	NO. PLACES	ITEM NO.	LOCATION	LUBRICATION TYPE	NO. PLACES
Lubrication Points				17	Brake Actuator Rod and Brake Brake Pivot Pins (Clevis)	Oil	3
1	Steering Lever Pivot	Grease	4	18	Brake Actuator Pivot	Grease	1
2	Body Hinge Point	Oil	2	19	Throttle Control Cable Ends	Oil	2
3	Deck-to-PTO Coupling (Grease Spline Slide Area)	Grease	1	20	Catcher Hinge Point	Oil	2
4	FSC Actuator Rod Pivot Pins	Oil	2	21	Rear Wheel Bearing	Grease	2
5	(FSC) Friction Body Pivot	Grease	1	22	Engine Dipstick / Oil Fill	Oil**	1
6	FSC Lever Pivot	Grease	1	23	Belt Tightener Pivot, Blower Drive (GHS Model Only)	Grease	1
7	Deck Support Arm Pivot	Grease	2	24	Belt Tightener Pivot, Ground Drive	Grease	1
8	Gear Axle	Oil**	2	25	PTO Gearbox Dipstick	Oil**	1
9	Universal Joint Tube Assembly	Grease*	1	26	Throttle Control Pivot	Oil	1
10	Parking Brake Lever Pivot	Grease	1	* Grease every twenty-five (25) hours.			
11	Universal Joint Quick Connect Spline (Grease Slide Area)	Grease	1	** Refer to T27i Operator's Manual for procedure for checking and changing oil in Engine Crankcase, Hydrostatic Transmissions and Gear Axles.			
12	Hydrostatic Drive / Oil Reservoir	Oil**	3	NOTE: See Model T27i Operator's Manual (P/N 8000-52) for proper lubrication intervals.			
13	Belt Tightener Pivot, Jackshaft Drive	Grease	1				
14	PTO Clutch Lever Pivot	Grease	1				
15	Clutch Actuator Push Rod	Grease	2				
16	Belt Tightener Pivot, PTO Clutch	Grease	1				

LUBRICATION POINTS



WIRING SCHEMATIC



LIMITED WARRANTY FOR WALKER COMMERCIAL RIDER MOWER

1. WHAT THIS WARRANTY COVERS, AND FOR HOW LONG:

Walker Manufacturing company will, at its option, repair or replace, without charge, any part covered by this warranty which is found to be defective in material and/or workmanship within two (2) years* after the date of sale to the original retail purchaser unless the product is used for rental purposes, in which case this warranty is limited to ninety (90) days. At Walker's request, customer will make the defective part available for inspection by Walker and/or return the defective part to Walker, transportation charges prepaid. All parts and components of the Walker Mower are covered by this warranty **except** the following components which are warranted separately by their respective manufacturers:

Kohler Engine

Battery

The available warranties covering these items are furnished with each mower. Walker does not assume any warranty obligation, liability or modification for these items, which are covered exclusively by the stated warranty of the respective manufacturers noted above.

* Extended warranties are offered for the following powertrain components:

- A three (3) year unlimited hour warranty is offered for the Walker P/N 6200-9 Gear Axle Assembly.
- A three (3) year or 3000 hour (whichever comes first) warranty is offered for Danfoss Model 7 Hydrostatic transmissions; covers full cost of replacement up to 1000 hours of use, and after 1000 hours warranty coverage is prorated against 3000 hours. If the transmissions are serviced at the recommended intervals by an authorized Walker Dealer using only Mobil SHC™ 630 oil (P/N 6450-20) and Walker filters (P/N 5024-13), the warranty will be extended to three (3) years, full replacement coverage, and unlimited hours.

2. WHAT THIS WARRANTY DOES NOT COVER:

- A. This warranty does not cover defects caused by depreciation or damage caused by normal wear, accidents, improper maintenance, improper use or abuse of the product, alterations, or failure to follow the instructions contained in the Operator's Manual for operation and maintenance.
- B. The customer shall pay any charges for making service calls and/or for transporting the mower to and from the place where the inspection and/or warranty work is performed.

3. HOW TO OBTAIN SERVICE UNDER THIS WARRANTY:

Warranty service can be arranged by contacting the dealer where you purchased the mower or by contacting Walker Manufacturing Company, 5925 East Harmony Road, Ft. Collins, CO 80528. Proof of the date of purchase may be required to verify warranty coverage.

4. WARRANTY LIMITATION:

- A. **THERE IS NO OTHER EXPRESS WARRANTY. ANY WARRANTY THAT MAY BE IMPLIED FROM THIS PURCHASE INCLUDING MERCHANTABILITY AND FITNESS FOR A PARTICULAR PURPOSE IS HEREBY LIMITED TO THE DURATION OF THIS WARRANTY AND TO THE EXTENT PERMITTED BY LAW ANY AND ALL IMPLIED WARRANTIES ARE EXCLUDED.** Some states do not allow limitations on how long an implied warranty lasts, so the above limitations may not apply to you.
- B. **WALKER WILL NOT BE LIABLE FOR ANY INCIDENTAL, CONSEQUENTIAL, OR SPECIAL DAMAGES AND/OR EXPENSES IN CONNECTION WITH THE PURCHASE OR USE OF THE MOWER.** Some states do not allow the exclusion or limitation of incidental or consequential damages, so the above limitation(s) or exclusion(s) may not apply to you.
- C. Only the warranty expressed in this limited warranty shall apply and no dealer, distributor, or individual is authorized to amend, modify, or extend this warranty in any way. Accordingly, additional statements such as dealer advertising or presentations, whether oral or written, do not constitute warranties by Walker, and should not be relied upon.
- D. This warranty gives you specific legal rights, and you may also have other rights which vary from state to state.



WALKER

WALKER MFG. CO. • 5925 E. HARMONY ROAD, FORT COLLINS, CO 80528 • (970) 221-5614
FORM NO. 040424 PRINTED IN USA www.walker.com ©2024 WALKER MFG. CO