

WALKER

Illustrated Parts Manual

T30i



Beginning S/N: 150226
P/N 8000-42

KEY TO ABBREVIATIONS USED IN THIS MANUAL

<i>Abbreviation</i>	<i>What it Represents</i>
° (Dimension)	Degrees (Angle)
" (Dimension)	inches
(-)	Negative (Polarity)
(+)	Positive (Polarity)
AT	All-Terrain
CCW	Counter-clockwise
Conn	Connector
CW	Clockwise
D	Diameter
DC	Deck, Collection (number refers to size in inches)
DM	Deck, Mulching (number refers to size in inches)
DR	Deck, Rear Discharge (number refers to size in inches)
DS	Deck, Side Discharge (number refers to size in inches)
DU	Garlock (Bearing)
ESNA (Fastener)	Nylon Insert Locknut
FSC	Forward Speed Control
GA	Gauge
gal	gallon
GHS	Grass Handling System
GR (Fastener)	Grade
HD	Heavy Duty
HP	Horse Power
ID	Identification or Inside Diameter
L	Length
LH	Left Hand (orientated with operator on seat)
LP	Low Profile
mm (Dimension)	millimeters
MS (Fastener)	Machine Screw
NS (as part number)	Item is not sold by Walker Manufacturing
OD	Outside Diameter
oz	ounce
PFH (Fastener)	Phillips Flat Head
P/N	Part Number
PPH (Fastener)	Phillips Pan Head
PTH (Fastener)	Phillips Truss Head
PTO	Power Take-Off
QKS	Quick Slide
qt	quart
RH	Right Hand (orientated with operator on seat)
SAE (Fastener)	Society of Automotive Engineers
SBH (Fastener)	Socket Button Head (Bolt)
SFH (Fastener)	Slotted Flat Head
SHC (Fastener)	Socket Head Cap
SHL (Fastener)	Shoulder (Bolt)
SM (Fastener)	Sheet Metal (Screw)
S/N	Serial Number
Spg	Spring
SQH (Fastener)	Square Head
SS (Fastener)	Stainless Steel
ST (Fastener)	Self-Tapping (Screw)
Term	Terminal
V	Volts

NOTE: In some instances, combinations of abbreviations may be used (e.g. PPHMS - Phillips Pan Head Machine Screw).

ILLUSTRATED PARTS LIST

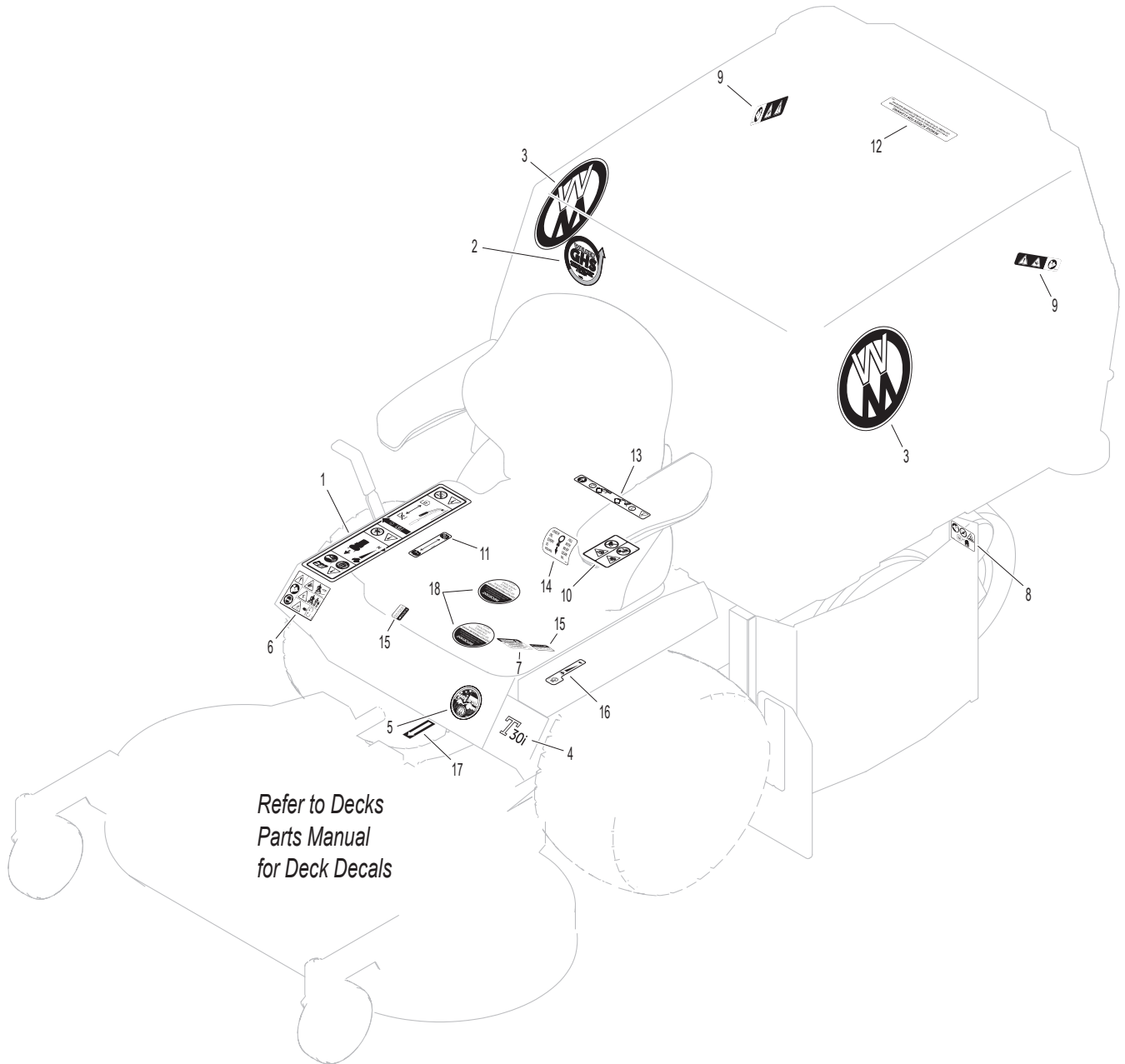
<i>Section of Tractor Covered</i>	<i>Page</i>	<i>Section of Tractor Covered</i>	<i>Page</i>
<hr/>		<hr/>	
Decals		Electrical Components	
Tractor Decals	2	Electrical Assembly	32
Body / Chassis Assemblies		Electrical Assembly (EFI Components).....	34
Body / Chassis Assembly	4	Electrical Assemblies (GHS 10.0 Bushel Components).....	36
Rear Body Assembly.....	6	Electrical Connectors.....	38
Tractor Components		Maintenance	
Main Component Power Transmission	8	Lubrication Points	40
Engine Group.....	10	Wiring Schematic.....	42
Engine Group (Fuel Components)	12	Maintenance And Service Record Sheet.....	44
Radiator Group	14	Warranty	
Hydrostatic Ground Drive Assemblies.....	16	Limited Warranty	45
Steering Control Assemblies.....	18		
Throttle Control Assembly.....	20		
Parking Brake Assembly	22		
GHS Group	24		
GHS Powerfil® Assembly (10.0)	26		
GHS 10.0 Bushel Catcher Assembly.....	28		
Instrument Panel Assembly	30		

TRACTOR DECALS

ITEM NO.	PART NO.	DESCRIPTION	LOCATION	NO. REQ'D GHS
Walker Product and Operation Decals				
1	8600-33	RH Fender	Body, RH Side Near Seat	1
2	5813-2	Decal, 4" Grass-Pak Powerfil®	Powerfil® Cover Plate	1
3	5800-11	Walker (8" Round)	10.0 Bushel Catcher (one on each side)	2
4	8821-12	Decal, T30i	Body	1
5	5856-1	Made in USA	Body	1
Danger Decals Warning Decals Caution Decals				
6	8600-34	Warning, Read Manual	Body	1
7	5810-3	Decal, Hydro Warning	LH Gear Axle Drive Assembly	1
8	8600-12	Danger, Engine Exhaust	Radiator Guard	1
9	8600-10	Danger, Pinch Point	10.0 Bushel Catcher Mounting Frame Assembly (one on each side)	2
10	8600-4	Danger, Rotating Blower Blades	Body, Near Body Chute	1
Maintenance Decals				
11	8600-30	Parking Brake	Body, RH Side Below Seat	1
12	5869	Removable Screen	10.0 Bushel Catcher Removable Screen	1
13	8600-16	Front Body Closure	Rear Cross Member, Body	1
14	7827	Oil Level	Jackshaft Support	1
15	5810-1	Axle Oil Level	Gear Axle Drive Assemblies (one on each)	2
16	8600-31	Throttle	Body, LH Side	1
17	6875	PTO Alignment Arrow	Universal Joint Tube Assembly	1
18	5810-23	Reservoir	Hydrostatic Drives (one on each)	2

NOTE: All parts requiring decals are shipped with decals applied.

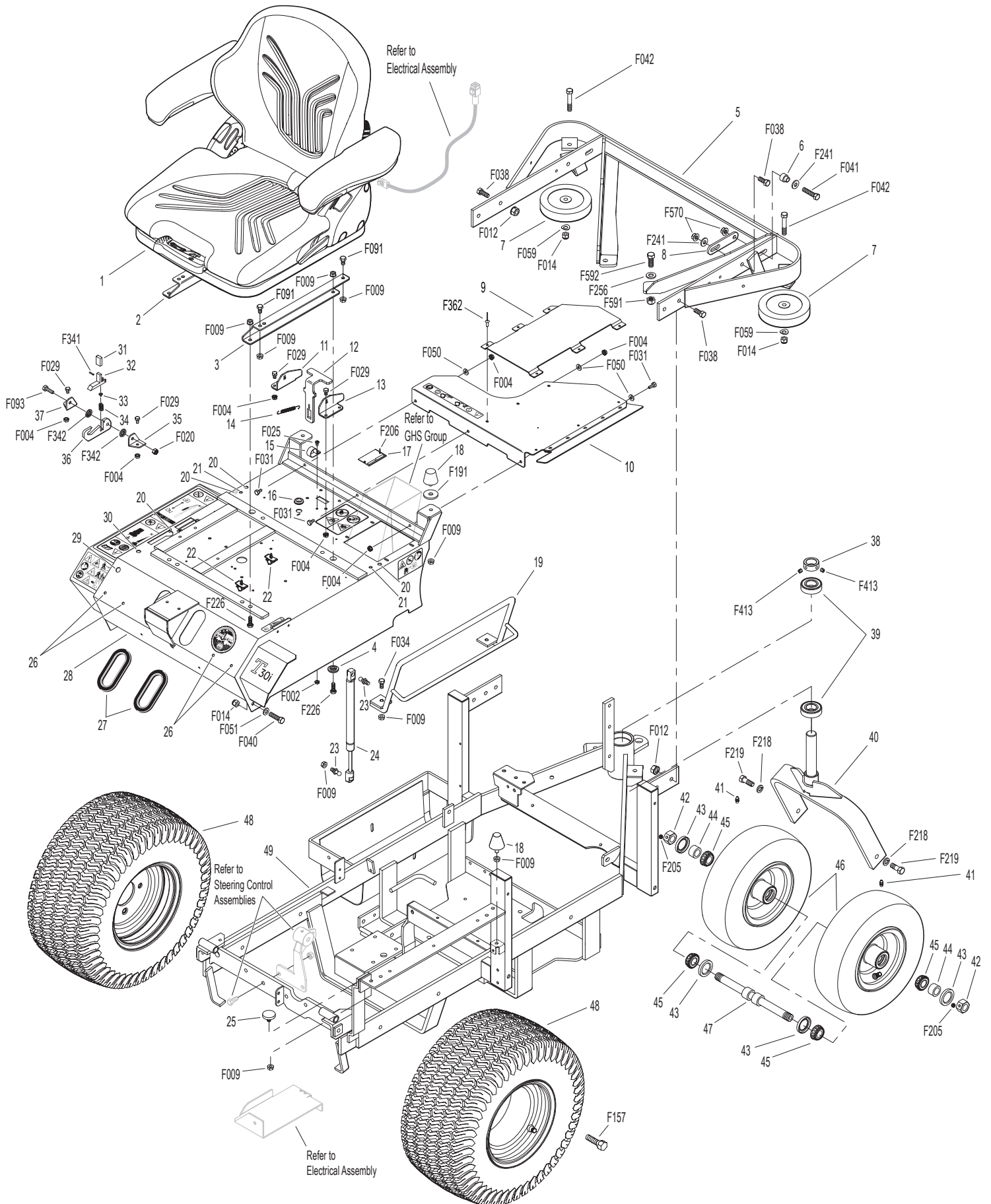
TRACTOR DECALS



BODY / CHASSIS ASSEMBLY

ITEM NO.	PART NO.	DESCRIPTION	NO. REQ'D	ITEM NO.	PART NO.	DESCRIPTION	NO. REQ'D
Seat Assembly				46	8035-1	Tail Wheel & Tire Assembly (13 x 4.5-6) (With Bearing Race)	2
1	6103-14	Suspension Seat	1				
2	6103-44	Grammer Seat Mount Channel, RH	1		8035-3	Tail Wheel Tire (13 x 4.5-6 Ply)	*
3	6103-45	Grammer Seat Mount Channel, LH	1		8036	Wheel & Hub (6 x 3.25) (Includes Items # 41 & Bearing Race)	*
4	6105-1	Shoulder Washer	2				
Rear Bumper Assembly					8037-2	Bearing Race	*
5	7516-7	GHS Rear Bumper	1		7420-20	Dual Tail Wheel & Tire Assembly (Includes Items # 42-47)	*
6	7516-5	Catcher Pivot Bushing	2				
7	5162	Roller Wheel (5" Rubber)	2	47	8038	Tail Wheel Axle (3/4 x 10-3/8)	1
8	7517-3	Catcher Pivot Plate	2	48	7070-2	Wheel & Tire Assembly (18 x 9.50-8)	2
Body Assembly					7070-1	Drive Tire (18 x 9.50-8)	*
9	8531-19	Heat Guard	1		5070-4	Wide Wheel (8 x 7)	*
10	8531-12	Body Grass Shield Assembly (Includes Items # 9, F004, F050, F031 & F362)	1	49	8300-17	Chassis Frame	1
				Fasteners			
11	7383-6	Body Latch Bracket, RH	1		F002	10-24 Keps Nut	1
12	7383-5	Body Latch Lever	1		F004	1/4-20 Keps Nut	9
13	7383-7	Body Latch Bracket, LH	1		F009	5/16-18 Whiz Locknut	16
14	7222	Extension Spring (1/4 x 3)	1		F012	3/8-16 Keps Nut	4
15	7833-2	Cable Clamp (1 x 1/4)	1		F014	3/8-16 ESNA Nut	4
16	5977-3	Grommet (9/16)	1		F020	5/16-18 ESNA Nut	1
17	NS	Body ID Plate	1		F025	10-24 x 3/8 PPHMS	1
18	5845	Rubber Bumper (1.50 OD x 1.25)	4		F029	1/4-20 x 1/2 Hex Bolt	6
19	7422	Panel Guard	1		F031	1/4-20 x 5/8 Hex Bolt	3
20	5989-4	Dome Plug (3/8)	4		F034	5/16-18 x 3/4 Hex Bolt	2
21	5989-3	Dome Plug (5/16)	2		F038	3/8-16 x 1 Hex Bolt	6
22	6105-3	Harness Clip	2		F040	3/8-16 x 1-1/2 Hex Bolt	2
23	7146	13mm Ball Stud	2		F041	3/8-16 x 1-3/4 Hex Bolt	2
24	7145	Gas Spring Assembly (Includes Item # 23)	1		F042	3/8-16 x 2-1/4 Hex Bolt	2
25	7844	Rubber Bumper (1.25 OD x .250)	1		F050	1/4 SAE Washer	3
26	5989-9	Dome Plug (1/4)	4		F051	3/8 SAE Washer	2
27	5180	Edge Molding, Lever Opening	2		F059	3/8 Wave Spring Washer	2
28	8100-9	Front Body	1		F091	5/16-18 x 5/8 Hex Bolt	4
29	5989-55	Dome Plug (1/2)	1		F093	5/16-18 x 1 Hex Bolt	1
30	5989-5	Dome Plug (7/16)	1		F157	1/2-20 x 1-1/4 Wheel Lug Bolt	8
Tilt-Up Latch Assembly**					F191	3/8 x 1-1/2 x 3/16 Washer	2
31	5847	Plastic Tip	1		F205	5/16-18 x 1/4 Set Screw, Knurl Point	2
32	5744-20	Spring Arm, Tilt-Up Latch	1		F206	#2 x 3/16 Drive Pin	2
33	5744-10	Spring Pivot Bushing	1		F218	7/16 Split Lock Washer	2
34	5744-15	Compression Spring (3/8 x 5/8)	1		F219	7/16-14 x 1-1/4 Hex Bolt	2
35	5744-13	Mount Angle, LH	1		F226	5/16-18 x 7/8 Hex Bolt	4
36	5744-12	Hook, Tilt-Up Latch	1		F241	.375 x .875 x .10 Washer	4
37	5744-14	Mount Angle, RH	1		F256	7/16 SAE Washer	2
Chassis Assembly					F341	Coil Roll Pin (7/64 x 9/16)	1
38	5267-1	Retainer Collar (1") (Includes Item # F413)	1		F342	5/16 Conical Washer	2
39	5270-1	Ball Bearing	2		F362	A/A62D Alum. Pop Rivet (3/16 D x 13/32 L)	6
40	7420	Tail Wheel Fork	1		F413	5/16-24 x 5/16 Set Screw	2
41	5830-3	Grease Fitting (45 Degree)	2		F570	3/8-16 Flange Top Lock Nut	4
42	8039	Nut, Tail Wheel Axle	2		F591	7/16-14 Flange Top Lock Nut	2
43	8768-2	Seal, Reverse Lip	4		F592	7/16-14 x 1-1/8 Hex Bolt GR 5	2
44	8038-1	Spacer, Tail Wheel Axle	2				
45	8037	Bearing Cone (3/4 ID)	4				
				*	Service Part Only		
				**	Complete Tilt-Up Latch Assembly Kit available by ordering kit # 5747.		

BODY / CHASSIS ASSEMBLY

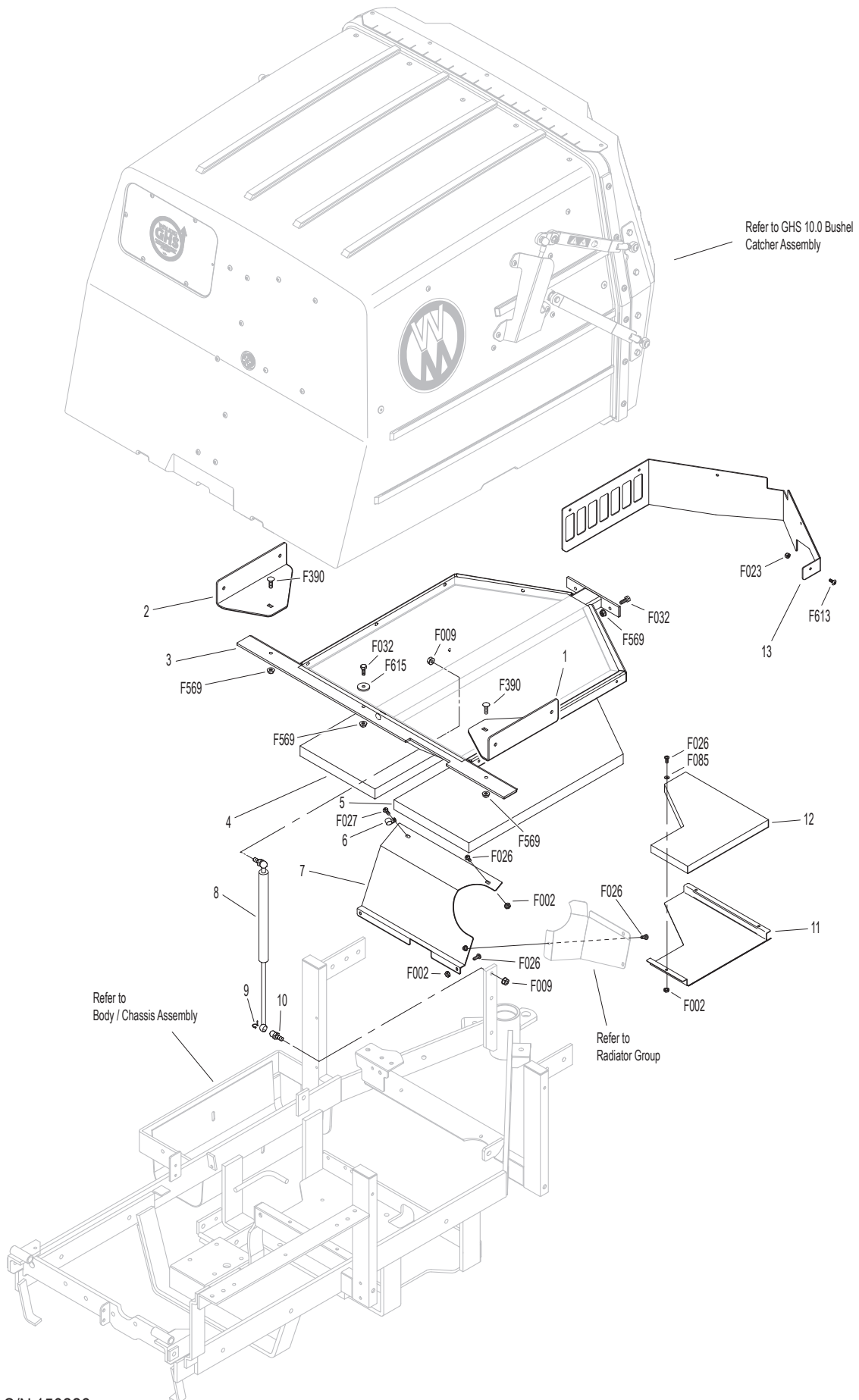


Beginning S/N 150226
 Use only genuine Walker® replacement parts.

REAR BODY ASSEMBLY

ITEM NO.	PART NO.	DESCRIPTION	NO. REQ'D	ITEM NO.	PART NO.	DESCRIPTION	NO. REQ'D
Rear Body Assembly				Fasteners			
1	8515-13	Catcher Handle Plate, LH	1	F002		10-24 Keps Nut	7
2	8515-14	Catcher Handle Plate, RH	1	F009		5/16-18 Whiz Locknut	2
3	8615-4	Catcher Support Frame, 10.0	1	F023		10-24 ESNA Nut	5
4	7190-2	Insulation Foam Pad, RH	1	F026		10-24 x 1/2 PPHMS	7
5	7190-1	Insulation Foam Pad, LH	1	F027		10-24 x 5/8 PPHMS	1
6	5832	Cable Clamp (1/2)	1	F032		1/4-20 x 3/4 Hex Bolt	3
7	8389-7	Splash Guard	1	F085		3/16 Rivet Backup Washer	3
8	7145	Gas Spring Assembly (Includes Items # 9 & 10)	1	F390		1/4-20 x 7/8 Carriage Bolt	2
9	7147	Spring Clip	2	F569		1/4-20 Flange Top Lock Nut	5
10	7146	13mm Ball Stud	2	F613		10-24 x 1/2 Truss Head Torx	5
11	8082-2	Heat Shield, 10.0	1	F615		1.0 x .255 x .125 Washer	1
12	7190-4	Insulation Foam Pad / GHS	1	NOTE: Rear Bumper Assembly for GHS Models is not shown here. Refer to BODY / CHASSIS ASSEMBLY , Page 4.			
13	8105-16	Rear Body Panel	1				

REAR BODY ASSEMBLY



Beginning S/N 150226
Use only genuine **Walker**® replacement parts.

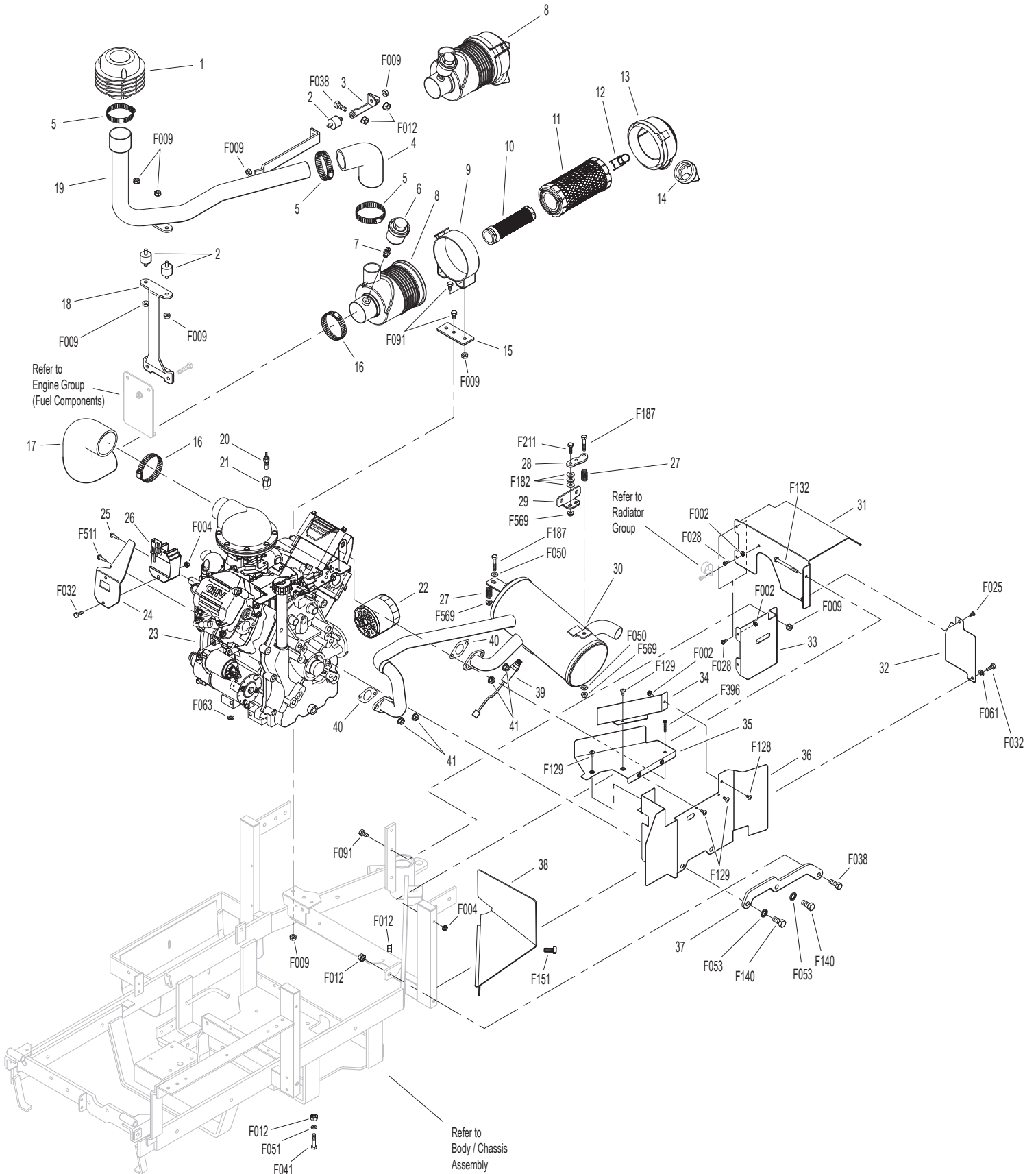
MAIN COMPONENT POWER TRANSMISSION

ITEM NO.	PART NO.	DESCRIPTION	NO. REQ'D	ITEM NO.	PART NO.	DESCRIPTION	NO. REQ'D
Clutch Lever Assembly				41	6325-4	Spacer Bushing (3/16)	1
1	8358-3	Clutch Lever (Includes Items # 2 & 3)	1	42	7201-4	Inner Race (1-1/2)	2
2	5830	Grease Fitting	7	43	5221-1	Extension Spring (3/4 x 5)	2
3	4850	Handle Grip, Black	1	44	8539	Starter Relay Mount	1
4	7303-10	Clutch Actuator Bolt (3/8)	1	45	5268	Bearing W/Collar (3/4)	2
5	7380-5	Knuckle Joint (3/8 ID)	1	46	7241-2	Transmission Drive Pulley (3-1/4MV) (Includes Items # F067 & F171)	1
6	7226-10	Compression Spring (3/4 x 2-1/2)	1	47	7833	Cable Clamp (7/8 x 1/4)	1
7	8130-5	Pushrod, Clutch Actuator (Threaded Tube) (Includes Item # 2)	1	48	8349	Transmission Belt Tightener Arm	1
8	8130-10	Clutch Actuator Rod Assembly (Includes Items # 2, 4-7, F054, F336 & F353)	1	49	6325-2	Spacer Bushing (5/16)	1
9	7201-3	Fiberglide Bearing	6	50	8394-1	Hydro Jackshaft Mount Assembly (Includes Items # 2, 9, 42, 45, 50 & 51)	*
10	7201-5	Inner Race (2-1/4)	1	51	8273	Jackshaft (3/4 x 7-1/2)	1
11	8368	PTO Belt Tightener	1	52	7240-4	Jackshaft Drive Pulley (3.3/3V) (Includes Items # F067 & F171)	1
12	5841	Retainer Washer (3/8 x 1-1/4)	4	Fasteners			
13	8243-1	Clutch Idler Pulley	1	F003	1/4-28 Hex Nut		2
	8243	Clutch Idler Pulley Assembly (Includes Items # 13-15 & F070)	*	F004	1/4-20 Keps Nut		3
14	5265	Bearing (3/4)	1	F005	1/4-20 ESNA Nut		1
15	8243-3	Hub, Idler Pulley	1	F009	5/16-18 Whiz Locknut		3
16	8375	PTO Belt Tightener Stop	1	F012	3/8-16 Keps Nut		7
17	7377	Plastic Washer (1 x .438 x .025)	2	F029	1/4-20 x 1/2 Hex Bolt		1
18	7378	Pivot Bearing (7/16 x 9/16)	1	F040	3/8-16 x 1-1/2 Hex Bolt		1
19	5281-5	Clevis Pin (1/4 x 0.80)	2	F041	3/8-16 x 1-3/4 Hex Bolt		2
20	5280	Clevis (1/4)	2	F042	3/8-16 x 2-1/4 Hex Bolt		3
21	8305	Brake Actuator Rod	1	F043	3/8-16 x 3 Hex Bolt		1
22	8370	Bearing, Brake Actuator	1	F047	3/8-16 x 4-1/2 Hex Bolt		1
23	8250	Brake Spring (1/2 x 2-1/2)	1	F054	AN960616 Washer		3
24	8369	Brake Actuator (Includes Items # 2 & 22)	1	F061	1/4 Internal Star Lock Washer		1
PTO Drive Shaft Assembly				F067	3/16 x 3/16 x 1 Key		2
25	7050-1	Dipstick, Gearbox	1	F069	3/32 x 1/2 Cotter Pin		3
26	8371-1	Mount Bracket, Brake Band	1	F070	1-3/4 Internal Snap Ring		1
27	8377	Brake Band Guide	1	F090	1/4-20 x 2-1/2 Hex Bolt		1
28	8050-11	PTO Gearbox / Flange Pulley	1	F116	1/4-20 x 1-1/4 Hex Bolt		1
29	5245	Idler Pulley (3")	2	F121	5/16-18 x 3/8 x 1 SHL Bolt		1
30	7248	Ground Drive Belt, Micro-V	1	F131	5/16-18 x 1/2 Hex Bolt		2
31	7275-16	Universal Joint Tube Assembly / Spline	1	F132	1/4-20 x 2-3/4 Hex Bolt		1
32	7275-9	Quick Coupler Installation Tool	1	F168	5/16 Split Lock Washer		14
33	7523-2	Clevis Pin W/Hole (1/4 x 5/8)	1	F171	5/16-18 x 3/8 Set Screw		4
34	8304	Brake Band (14-1/2)	1	F178	1/4 x 1 Fender Washer		1
35	6250-1	Drive Belt (3VX370)	1	F182	1/4 x 5/8 x 1/8 Washer		2
36	7236-1	PTO Drive Pulley (4-1/2/3V) (Includes Items # F168 & F226)	1	F226	5/16-18 x 7/8 Hex Bolt		14
37	8237-2	Engine Pulley, Bolt On (4/3.8/3V) (Includes Items # F168 & F226)	1	F241	.375 x .875 x .10 Washer		1
38	8230	Engine PTO Belt	1	F255	5/16-18 x 1-1/2 Hex Bolt		2
Jackshaft Assembly				F261	AN960616L Washer		1
39	7245-1	Idler Pulley (3/8 Groove)	1	F336	3/8-16 Jam Nut		1
40	8349-3	Idler Arm	1	F353	3/8-16 ESNA LP Nut		1
				*	Service Part Only		

ENGINE GROUP

ITEM NO.	PART NO.	DESCRIPTION	NO. REQ'D	ITEM NO.	PART NO.	DESCRIPTION	NO. REQ'D
Precleaner Assembly				34	8533-2	Top Shield	1
1	7026-3	Remote Precleaner (Includes Item # 5)	1	35	8533-3	Muffler Base Shield	1
2	7440	Shock Mount (1 x 3/4)	3	36	8533-4	Muffler Shield	1
3	7028-20	Rear Precleaner Mount	1	37	8318-3	Engine Brace	1
4	7032	Elbow, Precleaner	1	38	8531-10	Rear Muffler Heat Shield	1
5	7840-5	Hose Clamp (1-1/2 to 2)	3	39	NS	Oxygen Sensor (Kohler)	1
6	5091-2	Air Flow Indicator (Vacuum 10" H2O)	1	40	NS	Gasket (Kohler)	2
7	5091-4	Indicator Nipple	1	41	NS	Nut (Kohler)	4
8	5088-12	Air Cleaner Assembly (Includes Items # 6, 7 & 10-14)	*	Fasteners			
9	5088-3	Air Cleaner Band	1	F002	10-24 Keps Nut		4
10	5090-3	Safety Filter Insert	1	F004	1/4-20 Keps Nut		3
11	5090-1	Air Cleaner Cartridge	1	F009	5/16-18 Whiz Locknut		11
12	5088-5	Air Cleaner Draw Latch	2	F012	3/8-16 Keps Nut		8
13	5088-11	Air Cleaner Cap (Includes Item # 12)	1	F025	10-24 x 3/8 PPHMS		1
14	5090-2	Vacuator Valve	1	F028	10-24 x 3/4 PPHMS		2
15	7334-1	Air Cleaner Adapter Plate	1	F032	1/4-20 x 3/4 Hex Bolt		3
16	6029	Hose Clamp (1-3/4 to 2-1/4)	2	F038	3/8-16 x 1 Hex Bolt		3
17	8026-10	Air Hose, Cleaner	1	F041	3/8-16 x 1-3/4 Hex Bolt		4
18	7031-3	Tube Support Arm	1	F050	1/4 SAE Washer		2
19	7028-6	Precleaner Tube, 1-3/4 GHS	1	F051	3/8 SAE Washer		4
Engine Assembly				F053	7/16 Internal Star Lock Washer		2
20	7306-15	Water Temperature Sender	1	F061	1/4 Internal Star Lock Washer		1
21	7306-17	Temperature Sender Adapter	1	F063	3/8 Internal Star Lock Washer		1
22	NS	Oil Filter (Kohler 1205001)	1	F091	5/16-18 x 5/8 Hex Bolt		5
23	NS	30 HP Kohler EFI Engine	1	F128	10-24 x 3/8 PTHMS		1
24	8016-2	Regulator Mount	1	F129	10-24 x 1/2 PTHMS		4
25	NS	Screw (Kohler)	1	F132	1/4-20 x 2-3/4 Hex Bolt		1
26	NS	Regulator (Kohler)	1	F140	7/16-14 x 1 Hex Bolt		2
Exhaust Assembly				F151	3/8-16 x 7/8 Hex Bolt		1
27	5665	Compression Spring (1/2 x 1)	2	F182	1/4 x 5/8 x 1/8 Washer		6
28	8014-7	Muffler Mount Tab	1	F187	1/4-20 x 1-1/2 Hex Bolt		2
29	8014-10	Muffler Mount Angle	1	F211	1/4-20 x 7/8 Hex Bolt		2
30	8013-38	Muffler	1	F396	10-24 x 1-1/4 PPH Bolt		1
31	8532-5	Upper Grass Shield	1	F511	10-32 x 1/2 HWH Trilobe Screw		1
32	8532-2	Rear Shield	1	F569	1/4-20 Flange Top Lock Nut		4
33	8530-15	Muffler End Shield	1	* Service Part Only			
				NOTE: Refer to Kohler Engine Decal (NS) for Engine Identification Numbers.			

ENGINE GROUP

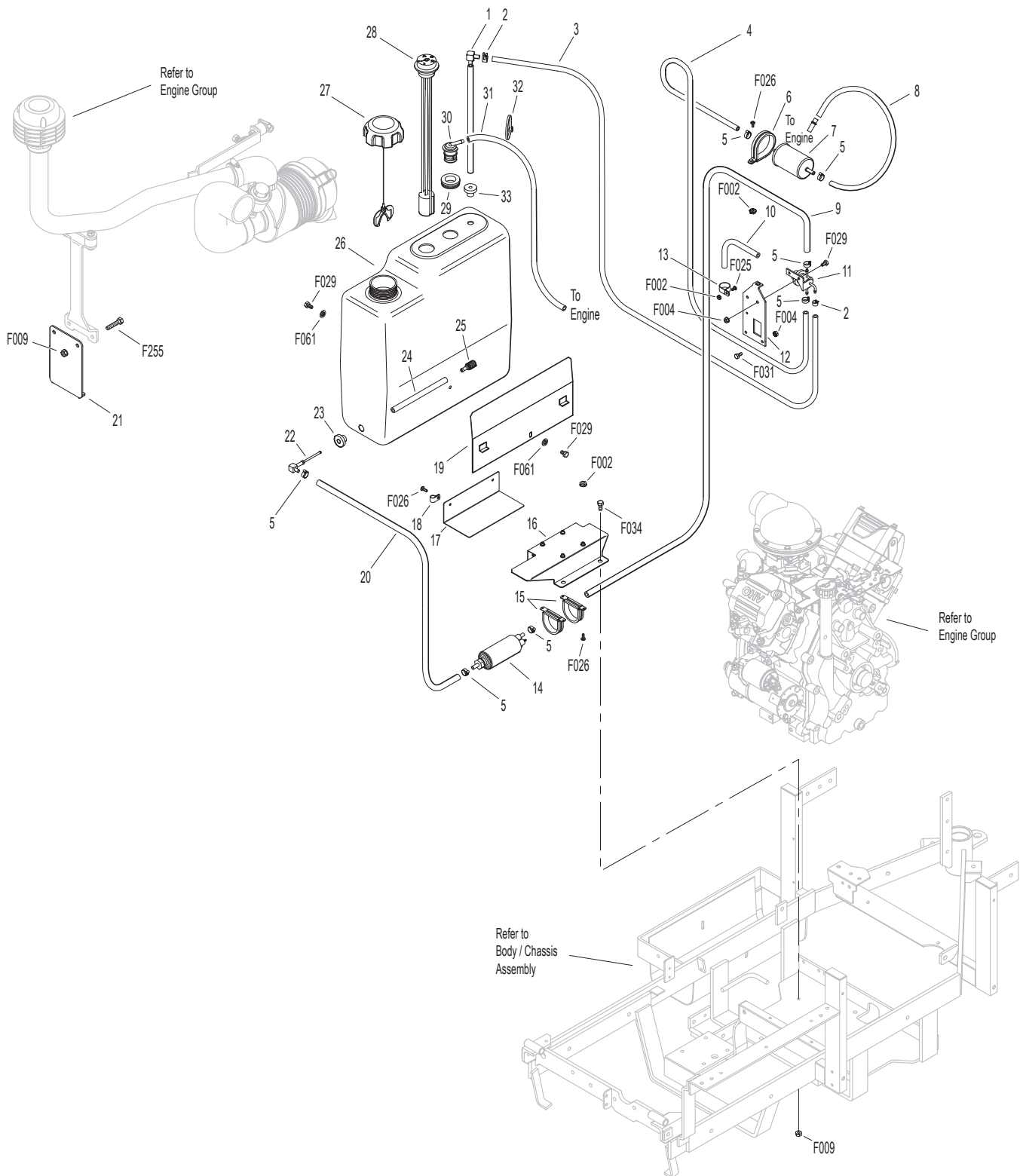


Beginning S/N 150226
 Use only genuine Walker® replacement parts.

ENGINE GROUP (FUEL COMPONENTS)

ITEM NO.	PART NO.	DESCRIPTION	NO. REQ'D	ITEM NO.	PART NO.	DESCRIPTION	NO. REQ'D
Fuel Tank Assembly				27	5082-4	2-1/4 Ratchet Fuel Cap	1
1	7046-1	Fuel Return Tube	1	28	8055-2	Fuel Tank Gauge	1
2	5879-3	Hose Clamp (1/2)	2	29	5977-7	Roll Over Grommet (.900 x 1-1/2)	1
3	M111	Fuel Line (1/4 x 16")	1*	30	8043-8	Roll Over Valve	1
4	M247	Fuel Line (5/16 x 21") Regulator To Filter (Includes Item # 5)	1*	31	M113	Fuel Line (3/16 x 15")	1*
5	5879-5	Stepless Ear Clamp (5/8)	7	32	5975-1	Cable Tie (18# x 3-3/4")	1
6	8026-14	Clamp, Loop Style	1	33	5083-1	Bushing, Rubber	1
7	NS	Fuel Filter (Kohler)	1	Fasteners			
8	M247	Fuel Line (5/16 x 26") Filter to Engine	1*	F002	10-24 Keps Nut		6
9	M247	Fuel Line (5/16 x 16") Pump To Regulator	1*	F004	1/4-20 Keps Nut		4
10	M113	Vent Tube, Regulator (3/16 x 4")	1*	F009	5/16-18 Whiz Locknut		4
11	NS	Fuel Regulator (Kohler)	1	F025	10-24 x 3/8 PPHMS		1
12	7014-8	Regulator / Filter Mount	1	F026	10-24 x 1/2 PPHMS		7
13	7833	Cable Clamp (7/8 x 1/4)	1	F029	1/4-20 x 1/2 Hex Bolt		4
14	NS	Fuel Pump (Kohler)	1	F031	1/4-20 x 5/8 Hex Bolt		2
15	NS	Clamp (Kohler)	2	F034	5/16-18 x 3/4 Hex Bolt		2
16	7014-5	Fuel Pump Mount (Includes Items # F002 & F004)	1	F061	1/4 Internal Star Lock Washer		2
17	7014-6	Fuel Pump Cover	1	F255	5/16-18 x 1-1/2 Hex Bolt		2
18	5832	Cable Clamp (1/2)	1	* Required hose specifications:			
19	8023	Fuel Tank Support	1	M111 - 1/4" ID fuel/oil/vapor hose (Gates 4219-0103 or equivalent)			
20	M247	Fuel Line (5/16 x 8") Tank to Pump	1*	M113 - 3/16" ID fuel/oil/vapor hose (Gates 4219-0093 or equivalent)			
21	7014-7	Fuel Line Guard	1	M247 - 5/16" ID low permeation (<15g/m ² /day) fuel hose (Parker 38905 or equivalent)			
22	5083-2	Tank Tube Elbow	1	NOTE: Refer to Kohler Engine Decal (NS) for Engine Identification Numbers.			
23	5083-4	Plug Bushing (Viton)	1				
24	5086-7	Hose (1/4 x 6")	1				
25	5020-2	Fuel Filter, In Tank	1				
26	8055-1	Fuel Tank, 4.7 Gallon, Gas (Black) (Includes Items # 1, 23-25, 28-30 & 33)	1				

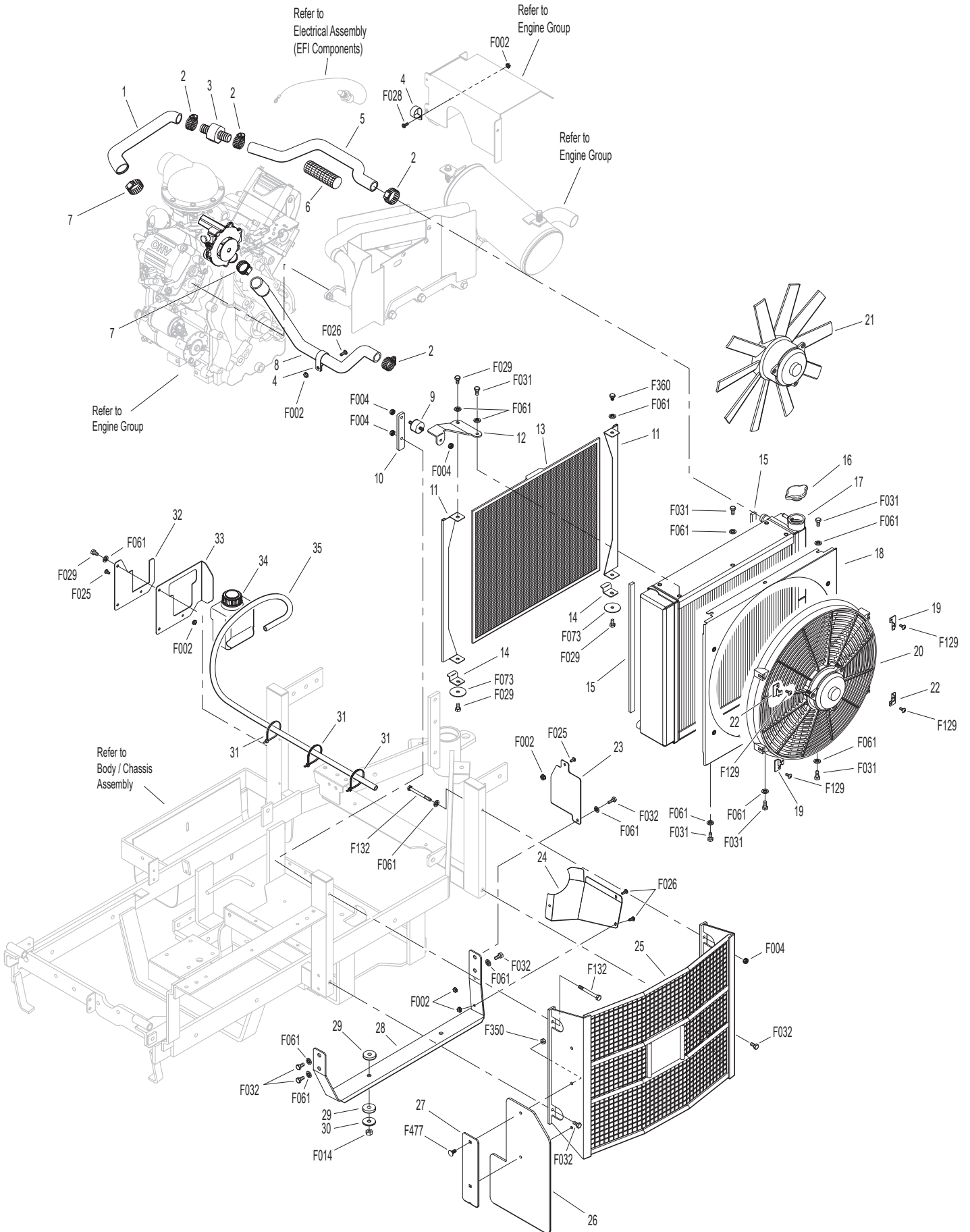
ENGINE GROUP (FUEL COMPONENTS)



RADIATOR GROUP

ITEM NO.	PART NO.	DESCRIPTION	NO. REQ'D	ITEM NO.	PART NO.	DESCRIPTION	NO. REQ'D
Radiator Assembly				Fasteners			
1	7017-12	Upper Radiator Hose, RH	1	F002		10-24 Keps Nut	6
2	7840-3	Hose Clamp (1/2 to 1-1/4)	4	F004		1/4-20 Keps Nut	4
3	8531-13	Tee Coupling	1	F014		3/8-16 ESNA Nut	2
4	7833-2	Cable Clamp (1 x 1/4)	2	F025		10-24 x 3/8 PPHMS	2
5	7017-11	Upper Radiator Hose, LH	1	F026		10-24 x 1/2 PPHMS	3
6	8123-2	Insultherm (1 x 6)	1	F028		10-24 x 3/4 PPHMS	1
7	7840-4	Hose Clamp (3/4 to 1-1/2)	2	F029		1/4-20 x 1/2 Hex Bolt	5
8	7017-6	Lower Radiator Hose	1	F031		1/4-20 x 5/8 Hex Bolt	6
9	7432	Shock Mount (1.00 OD x .75)	1	F032		1/4-20 x 3/4 Hex Bolt	6
10	7426-3	Rubber Isolator Mount	1	F061		1/4 Internal Star Lock Washer	14
11	7426-5	Screen Channel	2	F073		1/4 x 1.5 Fender Washer	2
12	7426-7	Radiator Brace	1	F129		10-24 x 1/2 PTHMS	4
13	7425-3	Radiator Screen	1	F132		1/4-20 x 2-3/4 Hex Bolt	2
14	7426-8	Screen Stop	2	F350		1/4-20 LP Nylock	2
15	7431-2	Radiator Channel Seal	2	F360		1/4-20 x 3/8 Hex Bolt	1
16	7427-9	Radiator Cap	*	F477		1/4-20 x 5/8 Carriage Bolt	2
17	7427-13	Radiator	1				
18	7426-6	Radiator Fan Shroud	1	*		Service Part Only	
19	7427-22	Fan Mount Tab, RH	2				
20	7429-6	Radiator Cooling Fan	*				
21	7429-7	Fan Blade Replacement	*				
22	7427-21	Fan Mount Tab, LH	2				
23	8532-2	Rear Shield	1				
24	8531-6	Lower Shield	1				
25	7430-6	Radiator Guard	1				
26	7430-11	Radiator Guard Flap	1				
27	7430-10	Back Up Plate	1				
28	7426-4	Radiator Mount	1				
29	7434	Washer (3/8 x 1-1/4 x 1/4)	4				
30	5841	Retainer Washer (3/8 x 1-1/4)	2				
31	5975-3	Cable Tie (50# x 7")	3				
32	7427-11	Recovery Tank Keeper	1				
33	7427-10	Recovery Tank Mount	1				
34	7427-3	Coolant Recovery Tank	1				
35	7015-13	Recovery Tank Hose (25")	1				

RADIATOR GROUP



Beginning S/N 150226
Use only genuine Walker® replacement parts.

HYDROSTATIC GROUND DRIVE ASSEMBLIES

ITEM NO.	PART NO.	DESCRIPTION	NO. REQ'D	ITEM NO.	PART NO.	DESCRIPTION	NO. REQ'D
Transmission Lockout Assembly				Transmission Repair Parts			
1	5028-3	Transmission Lockout Assembly (Includes Items # 2-5, F023, F027 & F081)	*	27	5025-13	Hydro Input Shaft	*
2	5847	Plastic Tip	2	28	5025-8	Bearing, Input Shaft	*
3	5057	Lockout Cam (Includes Item # F081)	2	29	5025-7	Snap Ring	*
4	5028-5	Lockout Lever	2	30	NS	Seal, Input Shaft	*
5	5027-5	Lockout Mount	1**	31	5022	Reservoir to Casting Gasket	*
Ground Drive Assemblies				32	5024	Reservoir Cap and Gasket	*
6	6209-5	Bridge Assembly	1	33	5023	Transmission Reservoir Kit	*
7	6209-10	Idler Pulley Mount	1	34	5023-1	Rubber Bladder	*
8	6243-2	Hydro Fan, CCW	1	35	5025-6	O-Ring & Plug Assembly	*
9	5026	Hydrostatic Drive, CW	1	36	5025-3	Seal, Control Shaft	*
10	6206-1	Air Vent Valve	*	Fasteners			
11	6200-9	Gear Axle Drive Assembly (Includes Items # 10 & 12)	2	F009	5/16-18 Whiz Locknut		2
12	6207-12	Pipe Plug (1/4 NPTF)	*	F012	3/8-16 Keps Nut		2
13	5126	Cable Retainer (Uses existing bolt on Gear Axle Drive Assembly)	1	F023	10-24 ESNA Nut		2
14	6233-1	Pinion Gear	2	F027	10-24 x 5/8 PPHMS		2
15	6234	Spacer, Pinion Gear	2	F034	5/16-18 x 3/4 Hex Bolt		2
16	6201	O-Ring Seal	2	F036	1/4-20 x 1/2 SBH Screw		2
17	7244	Hydro Pulley (3-7/8/MV) (Includes Items # F064 & F359)	2	F040	3/8-16 x 1-1/2 Hex Bolt		4
18	6243-1	Hydro Fan, CW	1	F043	3/8-16 x 3 Hex Bolt		6
19	5025	Hydrostatic Drive, CCW	1	F053	7/16 Internal Star Lock Washer		4
Deck Support Arm Assemblies				F063	3/8 Internal Star Lock Washer		16
20	6430-10	Outboard Mount, LH	1	F064	1/8 x 1/2 Woodruff Key (#3)		4
21	6431-1	Deck Support Arm, LH (Includes Item # 25)	1	F081	A/A45D Aluminum Pop Rivet		2
22	5775-2	Hitch Pin (# 6)	2	F160	External Snap Ring (.669 Shaft)		2
23	6431-2	Deck Support Arm, RH (Includes Item # 25)	1	F178	1/4 x 1 Fender Washer		2
24	6430-9	Outboard Mount, RH	1	F194	7/16 x 1-1/4 x 1/8 Washer		2
25	5830	Grease Fitting	2	F200	7/16-20 x 3 Grade 8 Bolt		2
26	6840-2	Support Arm Bushing (2-1/16)	2	F244	7/16-20 x 3/4 Hex Bolt		2
				F262	3/8-16 x 4 Hex Bolt All Thread		2
				F359	5/16-18 x 5/16 Set Screw (Knurl Point)		4
				F579	3/8-16 x 1 Hex Bolt Grade 8		4
				* Service Part Only			
				** Part not used on Jackshaft side of tractor.			

STEERING CONTROL ASSEMBLIES

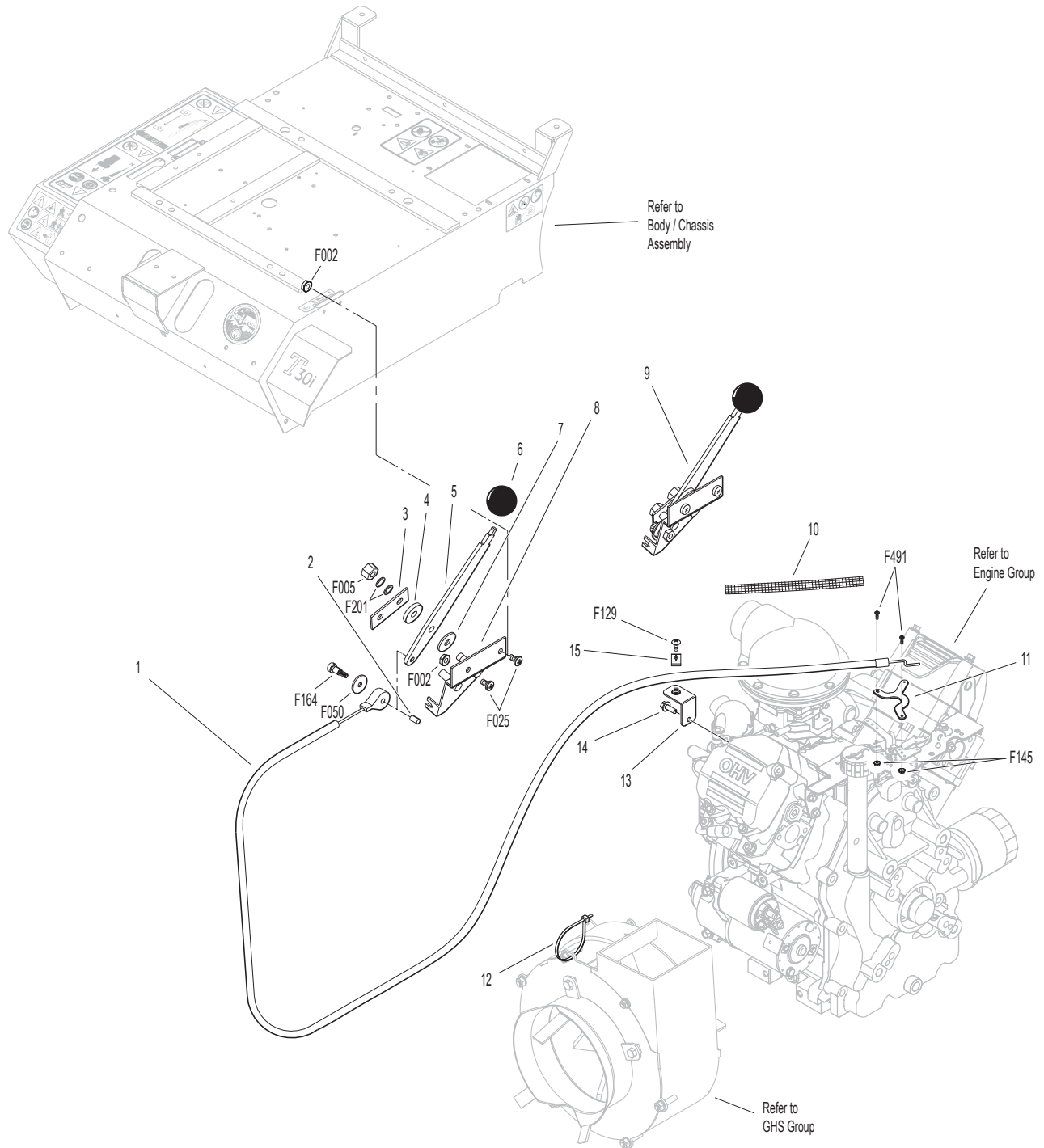
ITEM NO.	PART NO.	DESCRIPTION	NO. REQ'D	ITEM NO.	PART NO.	DESCRIPTION	NO. REQ'D
Transmission Spring Assemblies				Steering Lever Assemblies			
1	6201-2	Shock Mount Gear Drive, RH	1	32	5223	Extension Spring (1/4 x 5-1/2)	2
2	5146	10mm Ball Stud	4	33	5450	D-Clip	2
3	5199-3	Steering Lever Dampener Assembly	2	34	5451-11	Steering Lever Assembly, LH / Adjustable (Includes Items # 9-11, 21, F034 & F582)	1
4	6201-1	Shock Mount Gear Drive, LH	1	35	5391-3	Steering Lever Support	1
5	5214-2	Ball Joint (5/16-24) Nylon Lined	2	36	5217	Pivot Pin, Steering Lever	1
6	6212-6	Transmission Control Arm, LH	1	37	5453-20	Steering Lever Handle +1" Adjustable / SS (Includes Items # 14, F188, F198 & F345)	2
7	5213-3	Control Rod (6")	1	38	5450-11	Steering Lever Assembly, RH / Adjustable (Includes Items # 9-11, 21, F034 & F582)	1
8	5665-1	Compression Spring (2-1/2)	2	Fasteners			
9	7201-2	Fiberglide Bearing 1/2"	2	F004	1/4-20 Keps Nut		4
10	5463-5	Steering Arm Pivot Bushing (SS)	2	F007	5/16-18 Jam Nut		2
11	5463-4	Steering Lever Actuator	2	F008	5/16-24 Keps Nut		2
12	5213-4	Control Rod (14-3/4")	1	F009	5/16-18 Whiz Locknut		7
13	5212-6	Transmission Control Arm, RH	1	F010	5/16-24 ESNA Nut		2
Forward Speed Control Assemblies				F012	3/8-16 Keps Nut		2
14	5850-2	Handle Grip, Foam (5-1/2)	3	F024	5/16-24 Jam Nut		4
15	7170-2	FSC Lever Assembly (Includes Item # 21)	1	F029	1/4-20 x 1/2 Hex Bolt		2
16	5975-3	Cable Tie (50# x 7")	1	F032	1/4-20 x 3/4 Hex Bolt		2
17	5214-4	Ball Joint (5/16-24) W/O Stud	2	F034	5/16-18 x 3/4 Hex Bolt		3
18	5219	Extension Spring (3/4 x 6-3/4)	1	F038	3/8-16 x 1 Hex Bolt		2
19	5172	Bearing, Delrin (.250 x .375 x .250)	2	F050	1/4 SAE Washer		1
20	5141-1	FSC Actuator Block	1	F051	3/8 SAE Washer		2
21	5830	Grease Fitting	6	F064	1/8 x 1/2 Woodruff Key (#3)		2
22	5140-9	FSC Brace	1	F068	1/8 x 1 Cotter Pin		1
23	5141	FSC Friction Washer (1-1/2 x 3/8 x 1/16)	2	F069	3/32 x 1/2 Cotter Pin		1
24	5142-8	FSC Key	1	F093	5/16-18 x 1 Hex Bolt		1
	5140-12	FSC Control Assembly (Includes Items # 21, 23-25, 28, F182, F192 & F193)	*	F146	1/4-20 Jam Nut		1
25	5140-30	FSC Friction Body (Includes Item # 21)	1	F182	1/4 x 5/8 x 1/8 Washer		1
26	5141-2	FSC Actuator Rod	1	F183	.312 x .700 x .074 Washer		3
27	5281-5	Clevis Pin (1/4 x 0.80)	1	F186	5/64 x 1/2 Cotter Pin		1
28	5142-9	FSC Actuator Cam	1	F188	1/4-20 Self-Locking Nut		4
29	5141-3	Spacer	1	F192	3/8-24 Self-Locking Nut		1
30	5141-4	FSC Rod	1	F193	3/8 Belleville Spring Washer		3
31	5470-2	Speed Control Stop	1	F198	.250 x .625 x .040 Washer, SS		2
				F226	5/16-18 x 7/8 Hex Bolt		1
				F316	5/16-18 x 1-3/4 Hex Bolt		1
				F345	1/4-20 x .770 Knurled Bolt		4
				F350	1/4-20 LP Nylock		1
				F353	3/8-16 ESNA LP Nut		2
				F401	.504 x .751 x .030 Washer		1
				F562	5/16-18 x 1 Set Screw		1
				F582	Washer 5/16 x 7/8 x .125		2

* Service Part Only

THROTTLE CONTROL ASSEMBLY

ITEM NO.	PART NO.	DESCRIPTION	NO. REQ'D	ITEM NO.	PART NO.	DESCRIPTION	NO. REQ'D
Throttle Control Assembly				Fasteners			
1	8108-3	Throttle Cable	1	F002		10-24 Keps Nut	2
2	5172	Bearing, Delrin (.250 x .375 x .250)	1	F005		1/4-20 ESNA Nut	1
3	5108-7	Control Lock Tab	1	F025		10-24 x 3/8 PPHMS	2
4	5108-10	Friction Washer (.125)	1	F050		1/4 SAE Washer	1
5	5108-1	Control Lever, Throttle & Choke	1	F129		10-24 x 1/2 PTHMS	1
6	5108-5	Throttle Control Knob, Red	1	F145		4-40 Keps Nut	2
7	5108-11	Friction Washer (.062)	1	F164		10-24 x 1/4 x 3/8 SHL Bolt	1
8	5108-8	Control Bracket	1	F201		1/4 Belleville Spring Washer	2
9	7108	Control Assembly	1	F491		4-40 x 3/8 PPHMS	2
		(Includes Items # 3-5, 7, 8 & F201)					
	8108	Throttle Control and Cable Assembly (Includes Item # 6)	*	*		Service Part Only	
10	8123	Insulating Sleeve (3/8 x 6)	1				
11	8108-8	Throttle Bracket	1				
12	5975-1	Cable Tie (18# x 3-3/4")	1				
13	8108-9	Cable Mount	1				
14	NS	Bolt (Kohler)	1				
15	NS	Wire Clamp	1				

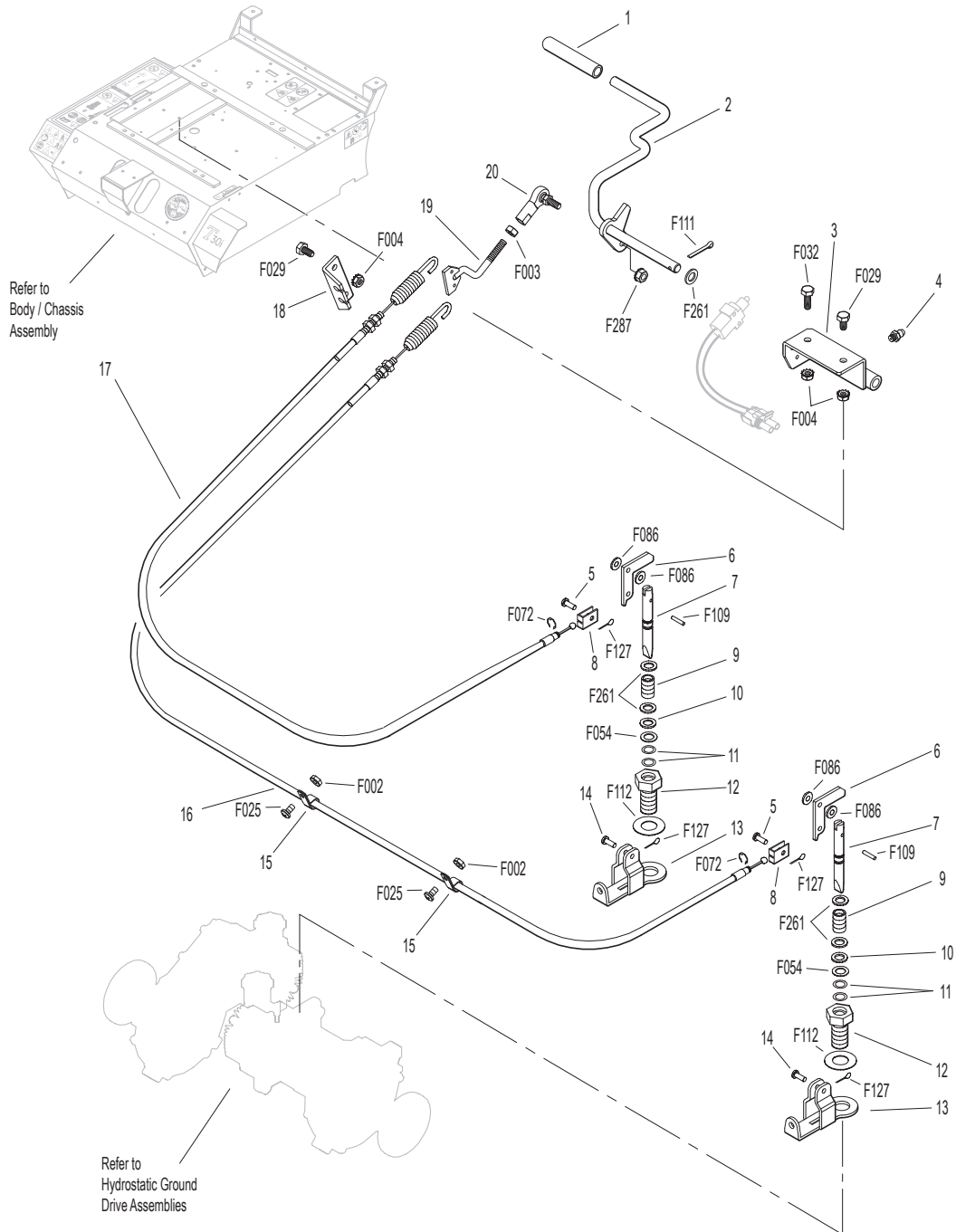
THROTTLE CONTROL ASSEMBLY



PARKING BRAKE ASSEMBLY

ITEM NO.	PART NO.	DESCRIPTION	NO. REQ'D	ITEM NO.	PART NO.	DESCRIPTION	NO. REQ'D
Parking Brake Assembly				Fasteners			
1	7406-1	Handle Grip, Red	1	F002		10-24 Keps Nut	2
2	7406-9	Parking Brake Lever	1	F003		1/4-28 Hex Nut	1
3	7406-10	Lever Mount	1	F004		1/4-20 Keps Nut	4
4	5830	Grease Fitting	1	F025		10-24 x 3/8 PPHMS	2
5	7407	Clevis Pin (3/16 x 1/2)	2	F029		1/4-20 x 1/2 Hex Bolt	3
6	7404-6	Brake Actuator Arm	2	F032		1/4-20 x 3/4 Hex Bolt	1
7	7405	Pin, Transmission Lock	2	F054		AN960616 Washer	2
8	7402	Clevis	2	F072		1/4 "E" Retainer Ring	2
9	7408	Compression Spring (1/2 x 3/4)	2	F086		#10 SAE Washer	4
10	7415	Rubber Dust Shield (5/8 x 3/8 x 1/32)	2	F109		1/8 x 5/8 Roll Pin	2
11	5567-3	O-Ring Seal (1/4 x 3/8)	4	F111		1/8 x 3/4 Cotter Pin	1
12	7403	Plunger Bushing, Gear Axle	2	F112		5/8 x 1-1/4 x .03 Washer	2
13	7404-7	Brake Actuator Mount	2	F127		1/16 x 1/2 Cotter Pin	4
14	7412	Clevis Pin (3/16 x 5/8)	2	F261		AN960616L Washer	5
15	5833	Cable Clamp (1/4)	2	F287		1/4-28 Keps Nut	1
16	7410	Brake Control Cable, LH (25.5")	1				
17	7409	Brake Control Cable, RH (20.5")	1				
18	7401-3	Cable Mount Bracket	1				
19	7401-1	Cable Pull Rod	1				
20	5552	Ball Joint (1/4-28)	1				

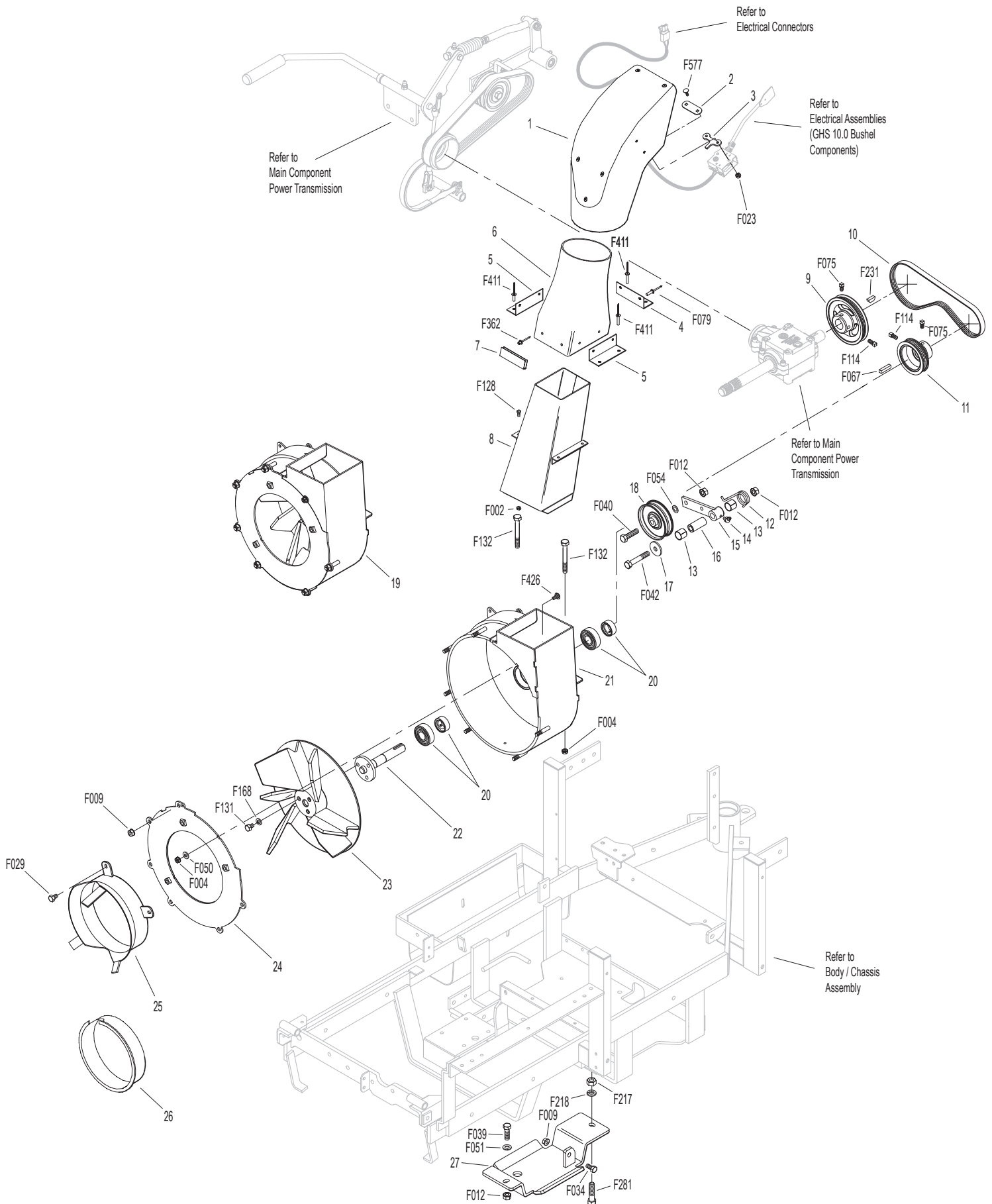
PARKING BRAKE ASSEMBLY



GHS GROUP

ITEM NO.	PART NO.	DESCRIPTION	NO. REQ'D	ITEM NO.	PART NO.	DESCRIPTION	NO. REQ'D
Delivery Chute Assembly				Fasteners			
1	5515-4	Elbow Delivery Spout	1	F002	10-24 Keps Nut		4
2	5592-24	Backing Plate, Grass-Pak® Switch	1	F004	1/4-20 Keps Nut		3
3	5592-23	Grass-Pak® Housing Spacer	1	F009	5/16-18 Whiz Locknut		7
4	5578	Rear Clip, Chute Mount	1	F012	3/8-16 Keps Nut		3
5	5577	Side Clip, Chute Mount	2	F023	10-24 ESNA Nut		2
6	8511-1	Delivery Chute W/Clips / 10.0 (Includes Items # 4, 5, 7, F362 & F411)	1	F029	1/4-20 x 1/2 Hex Bolt		3
7	5578-10	Front Clip, Chute Mount	1	F034	5/16-18 x 3/4 Hex Bolt		1
8	7530-4	Body Chute (10.5 Blower)	1	F039	3/8-16 x 1-1/4 Hex Bolt		1
Blower Belt Tightener Assembly				F040	3/8-16 x 1-1/2 Hex Bolt		1
9	7238-6	Blower Drive Pulley (Includes Items # F075, F114 & F231)	1	F042	3/8-16 x 2-1/4 Hex Bolt		1
10	7234-2	Blower Belt (Micro-V)	1	F050	1/4 SAE Washer		1
11	7239-1	Blower Pulley (Micro-V) (Includes Items # F067, F075 & F114)	1	F051	3/8 SAE Washer		1
12	7364-2	Torsion Spring	1	F054	AN960616 Washer		1
13	7201-3	Fiberglide Bearing	2	F067	3/16 x 3/16 x 1 Key		1
14	5830-3	Grease Fitting (45 Deg.)	1	F075	5/16-18 x 1/2 SQH Set Screw		2
15	7364-1	Blower Belt Tightener Arm	1	F079	A/A66D Aluminum Pop Rivet		6
16	7201-4	Inner Race (1-1/2)	1	F114	5/16-18 x 5/8 SQH Set Screw		2
17	5841	Retainer Washer (3/8 x 1-1/4)	1	F128	10-24 x 3/8 PTHMS		4
18	5245	Idler Pulley (3")	1	F131	5/16-18 x 1/2 Hex Bolt		3
Blower Assembly				F132	1/4-20 x 2-3/4 Hex Bolt		2
19	7544	Blower Assembly (10.5") (Includes Items # 20-24, F004, F009, F029, F050, F131, F168 & F426)	1	F168	5/16 Split Lock Washer		3
20	5268	Bearing W/Collar (3/4)	2	F217	7/16-14 Hex Nut		1
21	7544-3	Blower Housing (10.5)	1	F218	7/16 Split Lock Washer		1
22	7545-2	Blower Output Shaft (10.5)	1	F231	1/4 x 3/4 Woodruff Key (# 806)		1
23	7545	Blower Wheel (10.5")	1	F281	7/16-14 x 1-3/4 Hex Bolt		1
24	7543-1	Blower Faceplate (10.5)	1	F362	A/A62D Alum. Pop Rivet (3/16D x 13/32L)		2
25	7526	Intake Tube (10.5 Blower)	1	F411	3/16 Bulbex Rivet		6
26	5595-2	Intake Cover / GHS	1	F426	1/4-20 x 1/2 Carriage Bolt		1
27	7528-5	Skid Bar	1	F577	10-24 x 5/8 Carriage Bolt		2

GHS GROUP

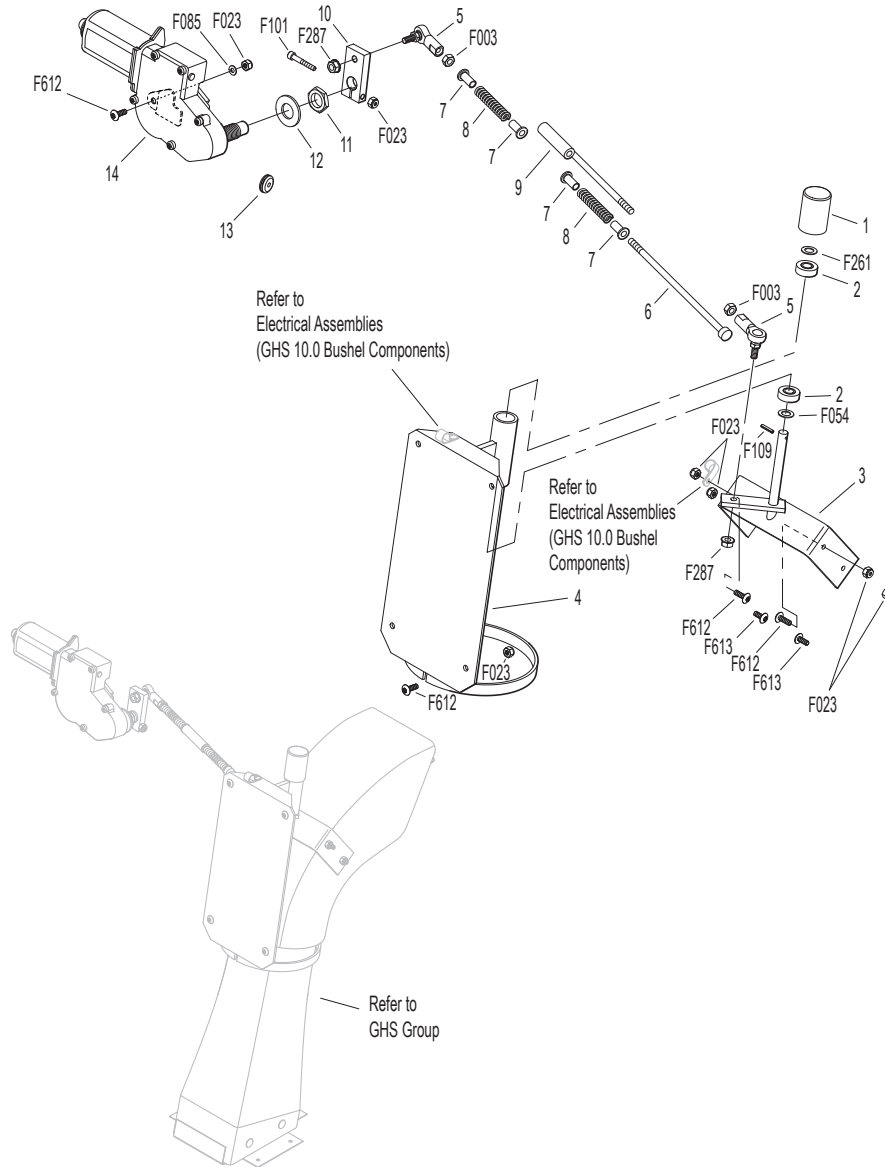


Beginning S/N 150226
 Use only genuine Walker® replacement parts.

GHS POWERFIL® ASSEMBLY (10.0)

ITEM NO.	PART NO.	DESCRIPTION	NO. REQ'D	ITEM NO.	PART NO.	DESCRIPTION	NO. REQ'D
10.0 GHS Powerfil® Assembly				Fasteners			
1	5551-3	Bearing Cap, Powerfil®	1	F003		1/4-28 Hex Nut	2
2	5551-1	Pivot Bearing (#S3PP)	2	F023		10-24 ESNA Nut	10
3	5518-2	Pivot, Delivery Spout	1	F054		AN960616 Washer	1
4	5517-2	Pivot Mount	1	F085		3/16 Rivet Backup Washer	1
5	5552	Ball Joint (1/4-28)	2	F101		10-24 x 1-1/4 SHC Screw	1
6	5558-1	Powerfil® Push Rod	1	F109		1/8 x 5/8 Roll Pin	1
7	5553-3	Bushing, Powerfil® Actuator	4	F261		AN960616L Washer	1
8	5553-1	Compression Spring (1/2 x 2)	2	F287		1/4-28 Keps Nut	2
9	5558-2	Powerfil® Actuator Rod	1	F612		10-24 x 5/8 Truss Head Torx	7
	5549	Actuator Rod Assembly (Includes Items # 5-9 & F003)	*	F613		10-24 x 1/2 Truss Head Torx	2
10	5554	Actuator Arm	1	* Service Part Only			
11	5519-3	Motor Mount Nut (5/8-24)	*				
12	5519-2	Motor Mount Washer	*				
13	5976-2	Grommet (3/16 x 3/4)	1				
14	5519-5	Actuator Motor (12V) (Includes Items # 11 & 12)	1				

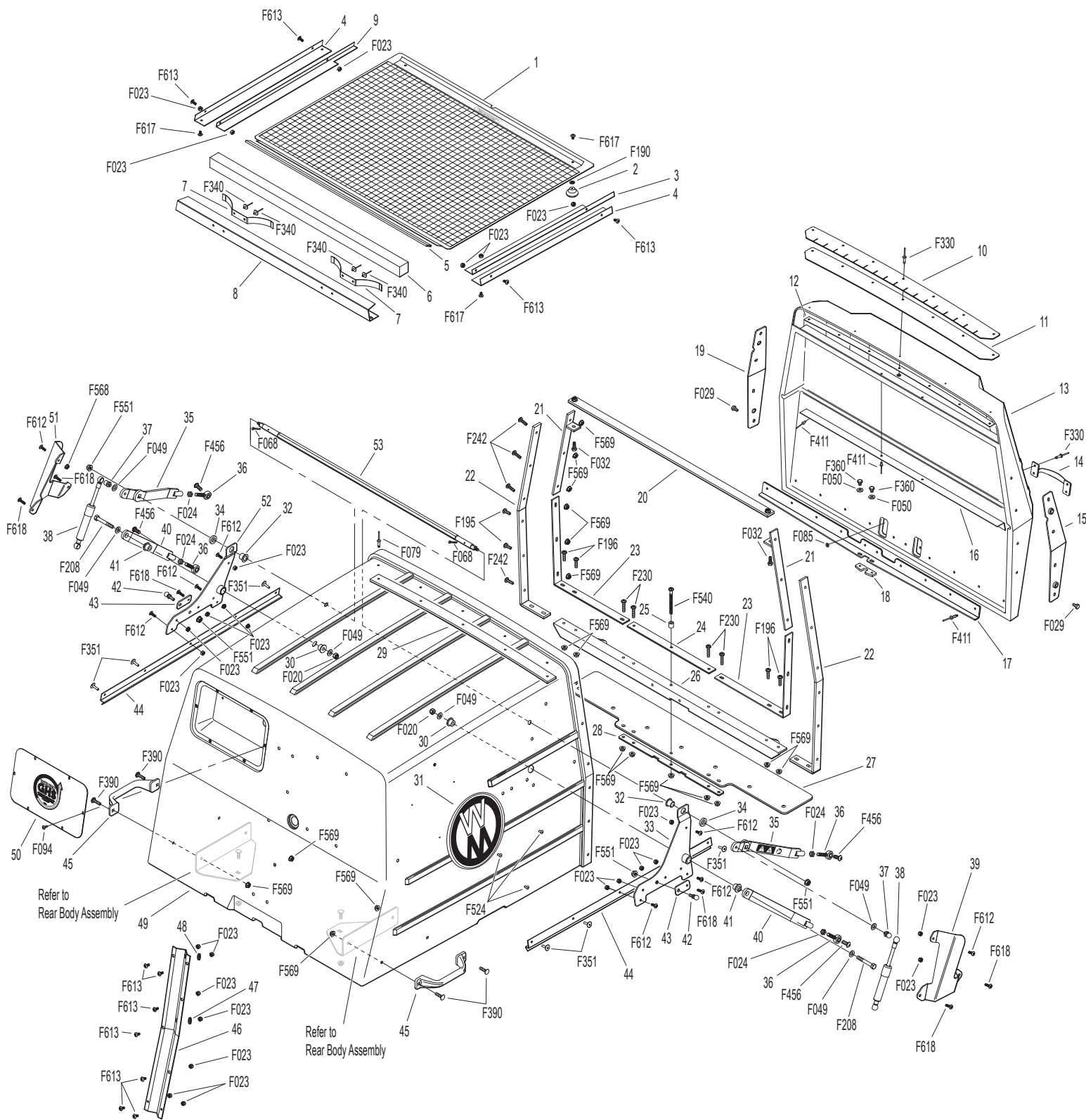
GHS POWERFIL® ASSEMBLY (10.0)



GHS 10.0 BUSHEL CATCHER ASSEMBLY

ITEM NO.	PART NO.	DESCRIPTION	NO. REQ'D	ITEM NO.	PART NO.	DESCRIPTION	NO. REQ'D
Upper Baffle Screen Assembly (Removable)				45	7532-1	Handle, Catcher Lift	2
1	7512-8	Removable Screen (3/16 Hole) (Includes Items # 2, 5, F190 & F617)	1**	46	8117	Wire Harness Channel	1
2	7506	Knob / Threaded Insert (10-24)	2	47	5976-2	Grommet (3/16 x 3/4)	1
3	8606-3	Channel Top, LH	1	48	5977-3	Grommet (9/16)	1
4	8606-2	Channel Bottom	2	49	8602-3	10.0 Catcher W/O Powerfil®, Gray (Includes Door)	*
5	7856-1	Edge Molding (26")	1		8602-4	10.0 Catcher W/Powerfil®, Gray (Includes Door)	*
6	7507	Screen Seal (27-1/2)	1		8610-5	10.0 Bushel Catcher Box, Gray	*
7	7505	Mustache Spring	2	50	8607-9	Powerfil® Cover Plate	1
8	8606	C-Channel (10.0)	1	51	8155-2	Gas Spring Cover, RH	1
	8606-20	C-Channel With Spring (10.0) (Includes Items # 7, 8 & F340)	*	52	8608-8	Hinge Plate, RH	1
9	8606-4	Channel Top, RH	1	53	8608-9	Torsion Bar	1
10.0 Exhaust Deflector Door Assembly				5598-2 Optional Dump Bag (Not Shown)			
10	8607-16	Upper Seal Support	1	May be ordered as an option. Contact your Walker dealer.			
11	8607-17	Upper Door Seal	1	Fasteners			
12	8607-18	Backup Plate	1	F020	5/16-18 ESNA Nut		2
13	8512-4	10.0 Catcher Box Door (Includes Items # 10-14, 16, 17, F085, F330 & F411)	1	F023	10-24 ESNA Nut		29
14	5583	Handle	1	F024	5/16-24 Jam Nut		4
15	8607-1	Door Mount, LH	1	F029	1/4-20 x 1/2 Hex Bolt		8
16	8607-12	Upper Door Stiffener	1	F032	1/4-20 x 3/4 Hex Bolt		2
17	8607-7	Lower Door Stiffener	1	F049	5/16 SAE Washer		6
18	8607-8	Door Guide	1	F050	1/4 SAE Washer		2
19	8607-2	Door Mount, RH	1	F068	1/8 x 1 Cotter Pin		2
GHS 10.0 Bushel Catcher Assembly				F079	A/A66D Aluminum Pop Rivet		5
20	8608-13	Center Strap	1	F085	3/16 Rivet Backup Washer		6
21	8608-3	Upper Frame Doubler	2	F094	8-32 x 1/2 PTHMS		6
22	8608-1	Outside Box Strap	2	F190	#10 Internal Star Lock Washer		2
23	8608-2	Lower Frame Doubler	2	F195	1/4-20 x 3/4 PPHMS, SS		4
24	8608-4	Center Frame Doubler	1	F196	1/4-20 x 1 PPHMS, SS		4
25	8608-11	Catcher Door Finger	1	F208	5/16-18 x 2-1/4 Hex Bolt		2
26	8608-6	Catcher Mount	1	F230	1/4-20 x 1-1/4 PPHMS, SS		4
27	8610-4	Catcher Dump Flap W/Plate 10.0	1	F242	1/4-20 x 7/8 PPHMS, SS		8
28	8610-3	Backing Plate, Dump Flap	1	F330	3/16D x 21/32L Rivet, SS		9
29	7584	Reinforcing Strap	1	F340	Rivet, Aluminum		4
30	5103-5	Pivot Bushing Inner	2	F351	Aluminum Pop Rivet		6
31	5801-3	Decal Plate, Round (Set of 2)	1	F360	1/4-20 x 3/8 Hex Bolt		2
32	7620-3	Pivot Bushing (1/2 x 9/16)	2	F390	1/4-20 x 7/8 Carriage Bolt		4
33	8608-7	Hinge Plate, LH	1	F411	3/16 Bulbex Rivet		19
34	5103-7	Outside Torsion Bushing	2	F456	5/16-18 x 3/4 SBH Cap Screw, SS		4
35	8607-4	Upper Arm	2	F524	3/16 x 3/8 Aluminum Rivet, Black		6
36	5214-12	Ball Joint (5/16-24)	4	F540	1/4-20 x 1-3/4 PPHMS, SS		1
37	5155-12	5/16 Ball Stud	2	F551	5/16-18 Flange Top Lock Nut		4
38	5155-4	Gas Spring	2	F568	10-24 Flange Top Lock Nut		1
39	8155-1	Gas Spring Cover, LH	1	F569	1/4-20 Flange Top Lock Nut		27
40	8607-3	Lower Arm	2	F612	10-24 x 5/8 Truss Head Torx		6
41	5103-6	Pivot Bushing Outer	2	F613	10-24 x 1/2 Truss Head Torx		11
42	5155-13	3/4 Ball Stud	2	F617	10-24 x 3/8 Truss Head Torx		4
43	5523-6	Gas Spring Plate	2	F618	10-24 x 3/4 Truss Head Torx		6
44	8608-10	Box Support, Gas Spring	2	* Service Part Only			
				** This screen can be replaced by P/N 7512-11 Removable Screen (3/4" holes) for improved air flow performance in wet conditions.			

GHS 10.0 BUSHEL CATCHER ASSEMBLY

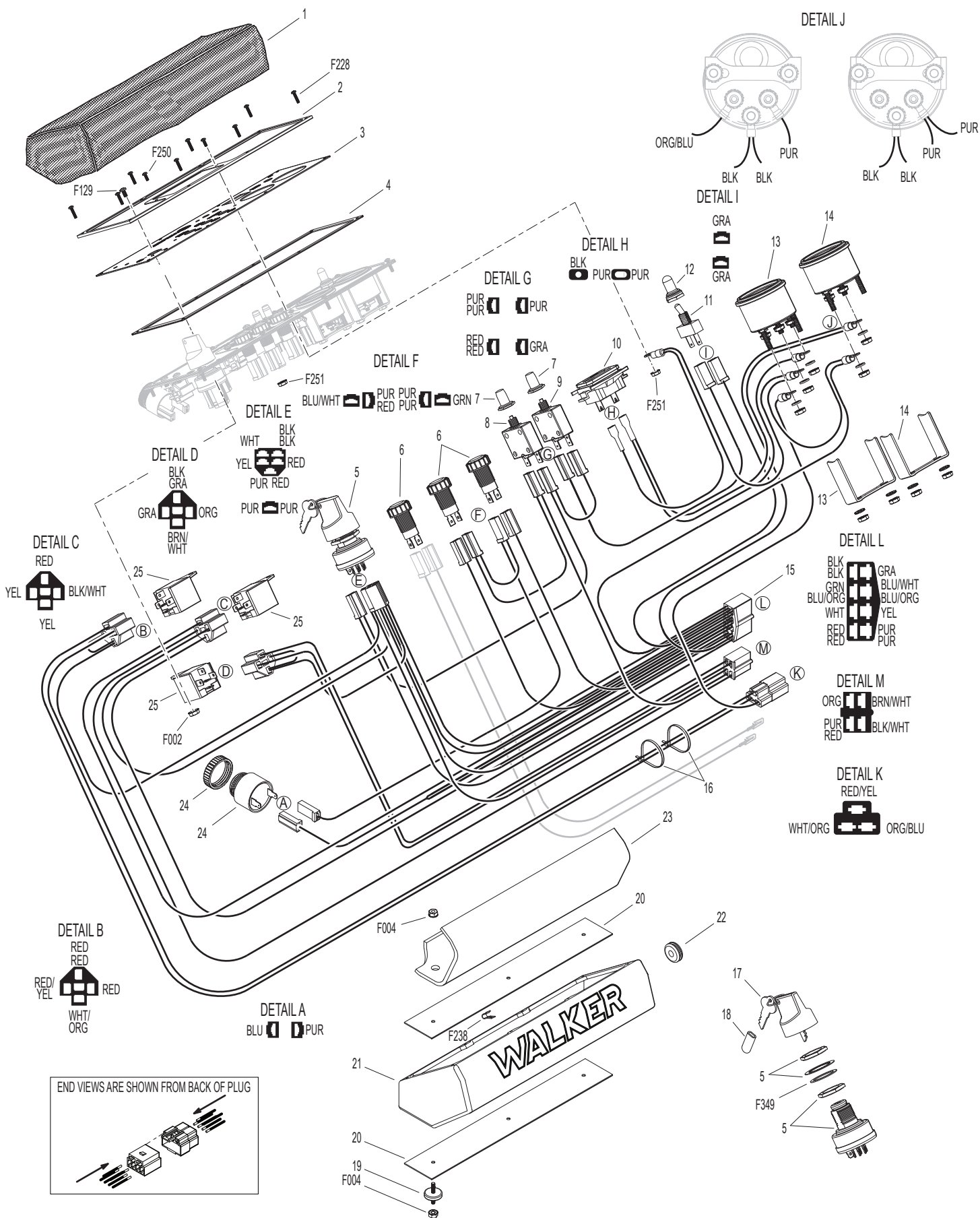


Beginning S/N 150226
 Use only genuine **Walker**® replacement parts.

INSTRUMENT PANEL ASSEMBLY

ITEM NO.	PART NO.	DESCRIPTION	NO. REQ'D	ITEM NO.	PART NO.	DESCRIPTION	NO. REQ'D
Instrument Panel Assembly				20	7391	Panel Box Mount Plate	2
1	7307-2	Instrument Panel Cover (Optional)	**	21	8385	Panel Box W/Graphic	1
	8306-7	Instrument Panel Assembly (Includes Items # 2-15, 24, 25, F129, F228, F250, F251 & F349)	1	22	7977-3	Grommet (1/8 x 1-1/8)	1
2	7307-7	Panel Frame	1	23	7307-16	Lining, Panel Box (1/8)	1
3	8820-6	Panel Faceplate W/Decal	1	24	8536	Warning Horn	1
4	7386	Panel Gasket	1	25	6942	Relay Switch 20/40 Amp (NC)	3
5	8960-15	Ignition Switch (With Keys) (Includes Items # 17, 18 & F349)	1	Fasteners			
6	8996-15	Red Indicator Light Assembly	3		F002	10-24 Keps Nut	3
7	7941-3	Boot, Circuit Breaker	2		F004	1/4-20 Keps Nut	6
8	7941-5	Circuit Breaker (7 Amp)	1		F129	10-24 x 1/2 PTHMS	1
9	7941-2	Circuit Breaker (10 Amp)	1		F228	#6 x 5/8 PPHSMS, SS	8
10	8990-1	Hourmeter (Global)	1		F238	J Clip, Instrument Panel	8
11	5995	Toggle Switch (Off-On)	1		F250	6-32 x 1/2 PPHMS	2
12	5995-2	Switch Boot	1		F251	6-32 Keps Nut	2
13	7306-14	Water Temperature Gauge	1		F349	Washer .835 ID, 1.122 OD, SS	1
14	8997	Voltmeter Gauge	1	* Service Part Only			
15	8945-5	Wire Harness, Instrument Panel	1	** May be ordered as an option. Contact your Walker dealer.			
16	5975-1	Cable Tie (18# x 3-3/4")	2	NOTE: Refer to ELECTRICAL CONNECTORS , Page 38 for identification of all Electrical Wiring Service Parts.			
17	8960-3	Key Set W/Umbrella	*				
18	7854	Plastic Tip, Red	1				
19	7307-1	Shock Mount (1.0 x .25)	3				

INSTRUMENT PANEL ASSEMBLY

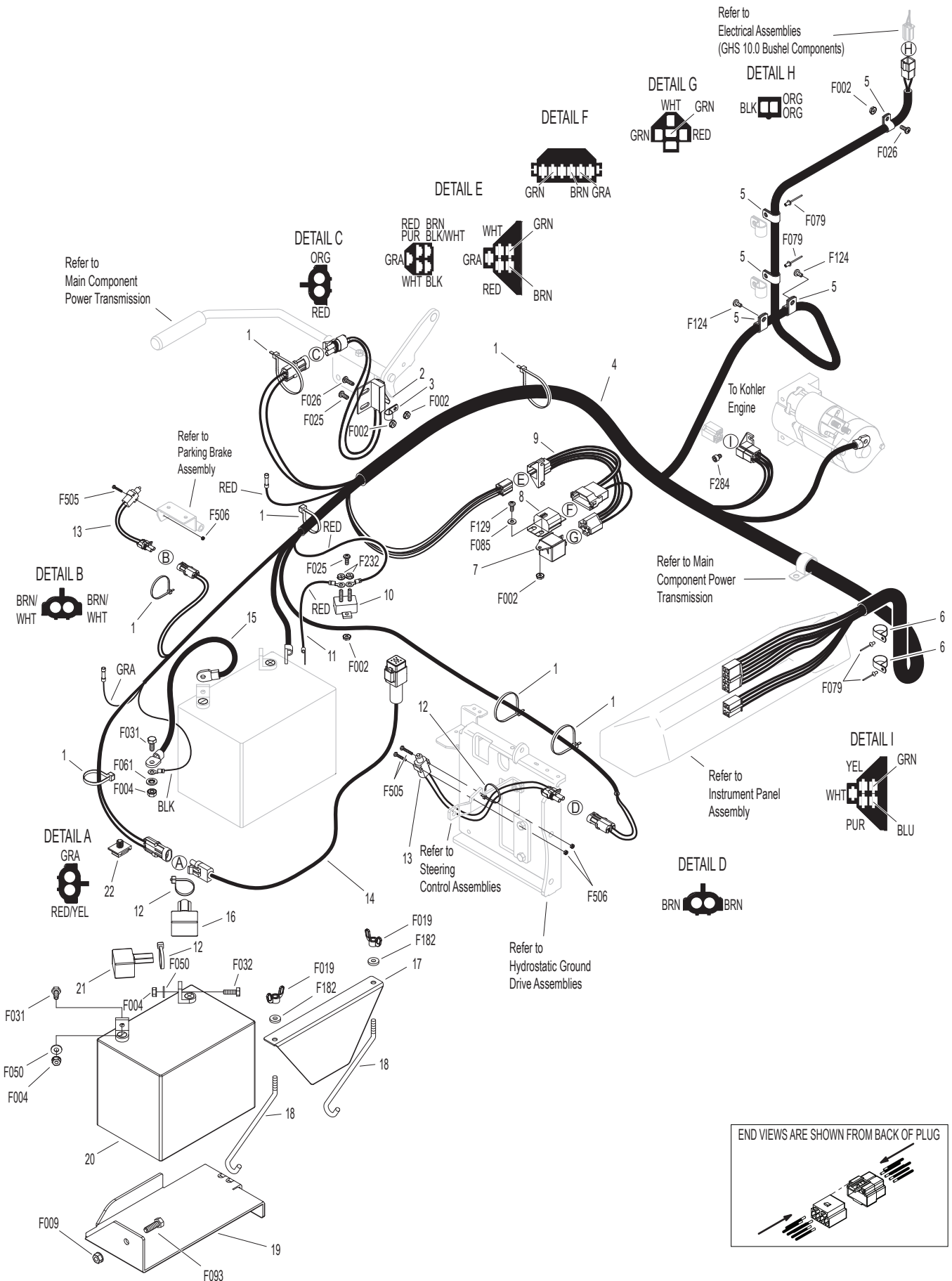


Beginning S/N 150226
Use only genuine Walker® replacement parts.

ELECTRICAL ASSEMBLY

ITEM NO.	PART NO.	DESCRIPTION	NO. REQ'D	ITEM NO.	PART NO.	DESCRIPTION	NO. REQ'D
Harness Assembly				Fasteners			
1	5975-3	Cable Tie (50# x 7")	7	F002		10-24 Keps Nut	8
2	5942-4	Safety Switch (NO)	1	F004		1/4-20 Keps Nut	3
3	5833	Cable Clamp (1/4)	1	F009		5/16-18 Whiz Locknut	1
4	8940-28	Wire Harness	1	F019		1/4-20 ESNA Wing Nut	2
5	5832	Cable Clamp (1/2)	5	F025		10-24 x 3/8 PPHMS	3
6	7833-2	Cable Clamp (1 x 1/4)	2	F026		10-24 x 1/2 PPHMS	2
7	6942	Relay Switch 20/40 Amp (NC)	1	F031		1/4-20 x 5/8 Hex Bolt	2
8	7948-6	Time Delay Module	1	F032		1/4-20 x 3/4 Hex Bolt	1
9	7948-5	Time Delay Harness	1	F050		1/4 SAE Washer	2
10	8941	Circuit Breaker (30 Amp) Auto Reset / Sealed	1	F061		1/4 Star Lock Washer	1
11	8943	Positive Battery Lead Wire (Red)	1	F079		A/A66D Aluminum Pop Rivet	4
12	5975-1	Cable Tie (18# x 3-3/4")	3	F085		3/16 Rivet Backup Washer	1
13	5942-16	Safety Switch (NO), Delta WP	2	F093		5/16-18 x 1 Hex Bolt	1
14	6103-19	Adapter Harness	1	F124		10-32 x 3/8 Tapitite Machine Screw	2
Battery Assembly				F129		10-24 x 1/2 PTHMS	1
15	6923	Negative Battery Cable	1	F182		1/4 x 5/8 x 1/8 Washer	2
16	5933	Battery Terminal Insul., Red (+)	1	F232		10-32 Keps Nut	2
17	5844-3	Battery Hold-Down Bar	1	F284		M6 x 1.0 x 8 SCH Screw	1
18	5839	Hook Bolt	2	F505		6-32 x 7/8 Hex Trim MS, SS	4
19	6390-2	Battery Pan	1	F506		6-32 Nylock Nut	4
20	NS	Battery (12V/340CCA/Wet)	1	NOTE: Refer to ELECTRICAL CONNECTORS , Page 38 for identification of all Electrical Wiring Service Parts.			
21	5932	Battery Terminal Insul., Black (-)	1				
22	7834-2	Wire Saddle (2 Wires)	1				

ELECTRICAL ASSEMBLY



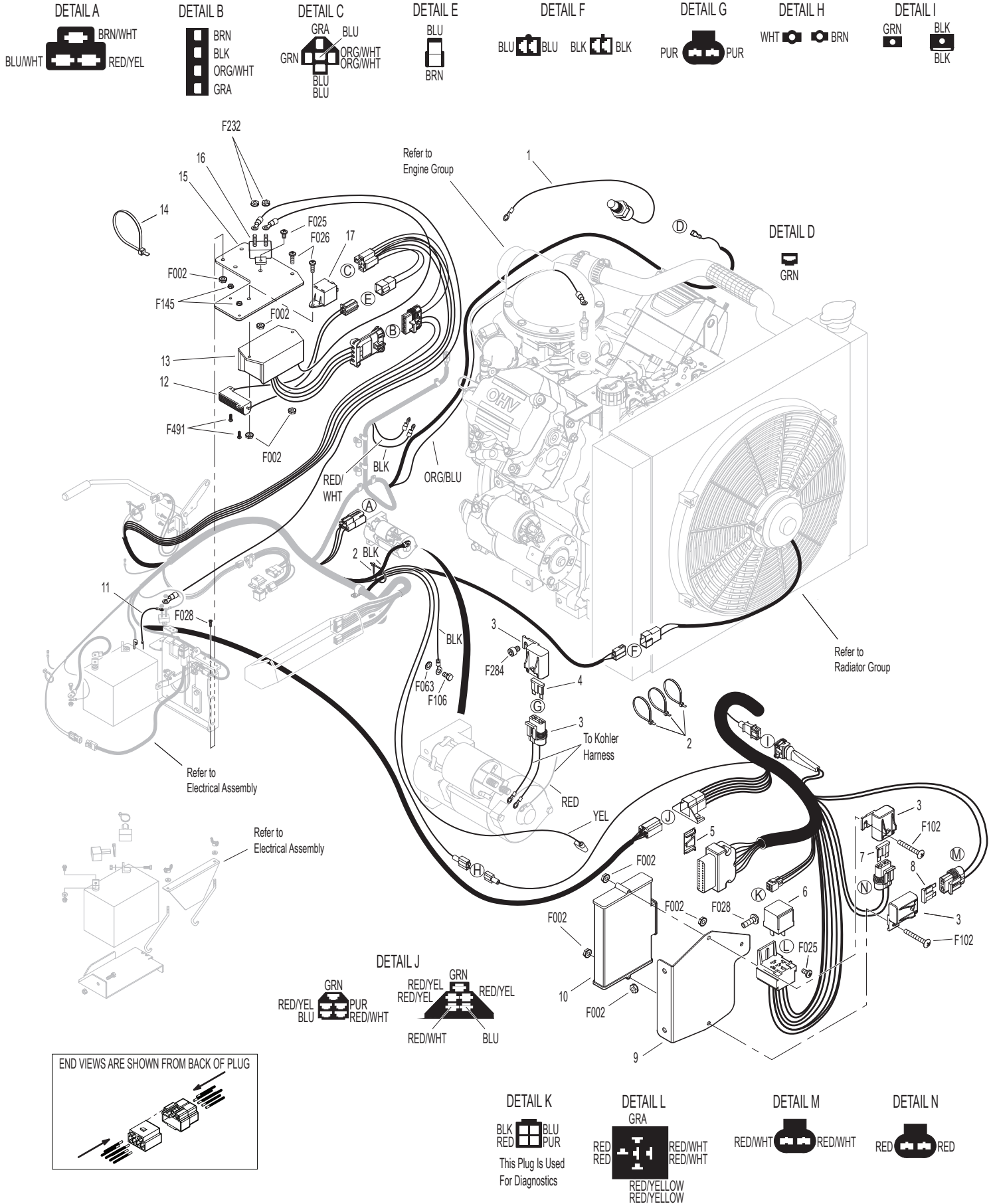
Beginning S/N 150226
 Use only genuine Walker® replacement parts.

ELECTRICAL ASSEMBLY (EFI COMPONENTS)

ITEM NO.	PART NO.	DESCRIPTION	NO. REQ'D	ITEM NO.	PART NO.	DESCRIPTION	NO. REQ'D
Electrical Assembly				Fasteners			
1	7306-11	Switch (205 Deg., 3/8-18 NPT)	1	F002		10-24 Keps Nut	8
2	5975-1	Cable Tie (18# x 3-3/4")	4	F025		10-24 x 3/8 PPHMS	3
3	NS	Fuse Holder (Kohler)	3	F026		10-24 x 1/2 PPHMS	2
4	6941-4	30 Amp Fuse	1	F028		10-24 x 3/4 PPHMS	3
5	NS	ECU Harness Clip	1	F063		3/8 Internal Star Lock Washer	1
6	NS	Relay (Kohler)	1	F102		10-24 x 1-1/2 PTHMS	2
7	6941-1	20 Amp Fuse	1	F106		3/8-16 x 5/8 Hex Bolt	1
8	6941-3	10 Amp Fuse	1	F145		4-40 Keps Nut	2
9	8940-7	ECU Mount Plate	1	F232		10-32 Keps Nut	2
10	NS	ECU (Kohler)	1	F284		M6 x 1.0 x 8 SHC Screw	1
11	7943	Battery Cable (+)	1	F491		4-40 x 3/8 PPHMS	2
12	7433-2	Resistor, 50 Watt / .4 OHM 1%	1				
13	7428-2	Fan Control Module W/P Plug	1				
14	5975-7	Cable Tie (50# x 11")	1				
15	8531-3	Reversing Module Mount	1				
16	7941	Circuit Breaker (40 Amp) (Auto Reset / Sealed)	1				
17	6942	Relay Switch 20/40 Amp (NC)	1				

NOTE: Refer to **ELECTRICAL CONNECTORS**, Page 38 for identification of all Electrical Wiring Service Parts.

ELECTRICAL ASSEMBLY (EFI COMPONENTS)

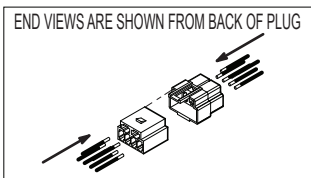
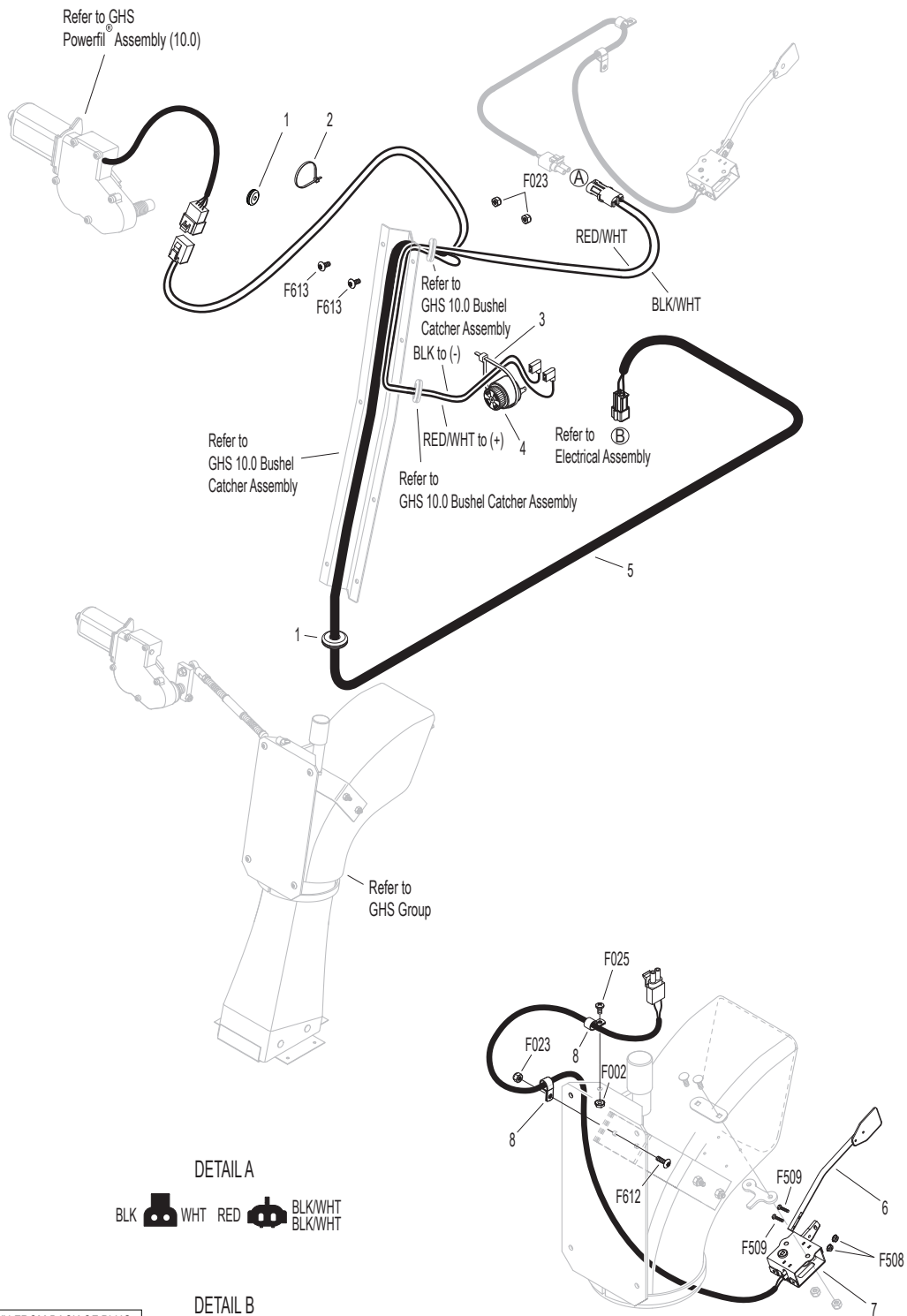


Beginning S/N 150226
Use only genuine **Walker**® replacement parts.

ELECTRICAL ASSEMBLIES (GHS 10.0 BUSHEL COMPONENTS)

ITEM NO.	PART NO.	DESCRIPTION	NO. REQ'D	ITEM NO.	PART NO.	DESCRIPTION	NO. REQ'D
Horn & Harness Channel Assemblies				Fasteners			
1	5977-2	Grommet, Cut (1/8 x 3/8)	2	F002		10-24 Keps Nut	1
2	5975-1	Cable Tie (18# x 3-3/4")	1	F023		10-24 ESNA Nut	3
3	5975-3	Cable Tie (50# x 7")	1	F025		10-24 x 3/8 PPHMS	1
4	5536-2	Horn, Full Signal	*	F508		4-40 Keps Nut, SS	2
Harness & Grass-Pak® Switch Assemblies				F509		4-40 x 1/2 Hex Head, SS	2
5	8950-4	Powerfil® Wire Harness (7.0 / 10.0)	1	F612		10-24 x 5/8 Truss Head Torx	1
6	5594-6	Aluminum Shaft & Vane Assembly	1	F613		10-24 x 1/2 Truss Head Torx	2
7	5592-20	Grass-Pak® Switch Assembly	1	* Service Part Only			
8	5833	Cable Clamp (1/4)	2	NOTE: Refer to ELECTRICAL CONNECTORS , Page 38 for identification of all Electrical Wiring Service Parts.			

ELECTRICAL ASSEMBLIES (GHS 10.0 BUSHEL COMPONENTS)

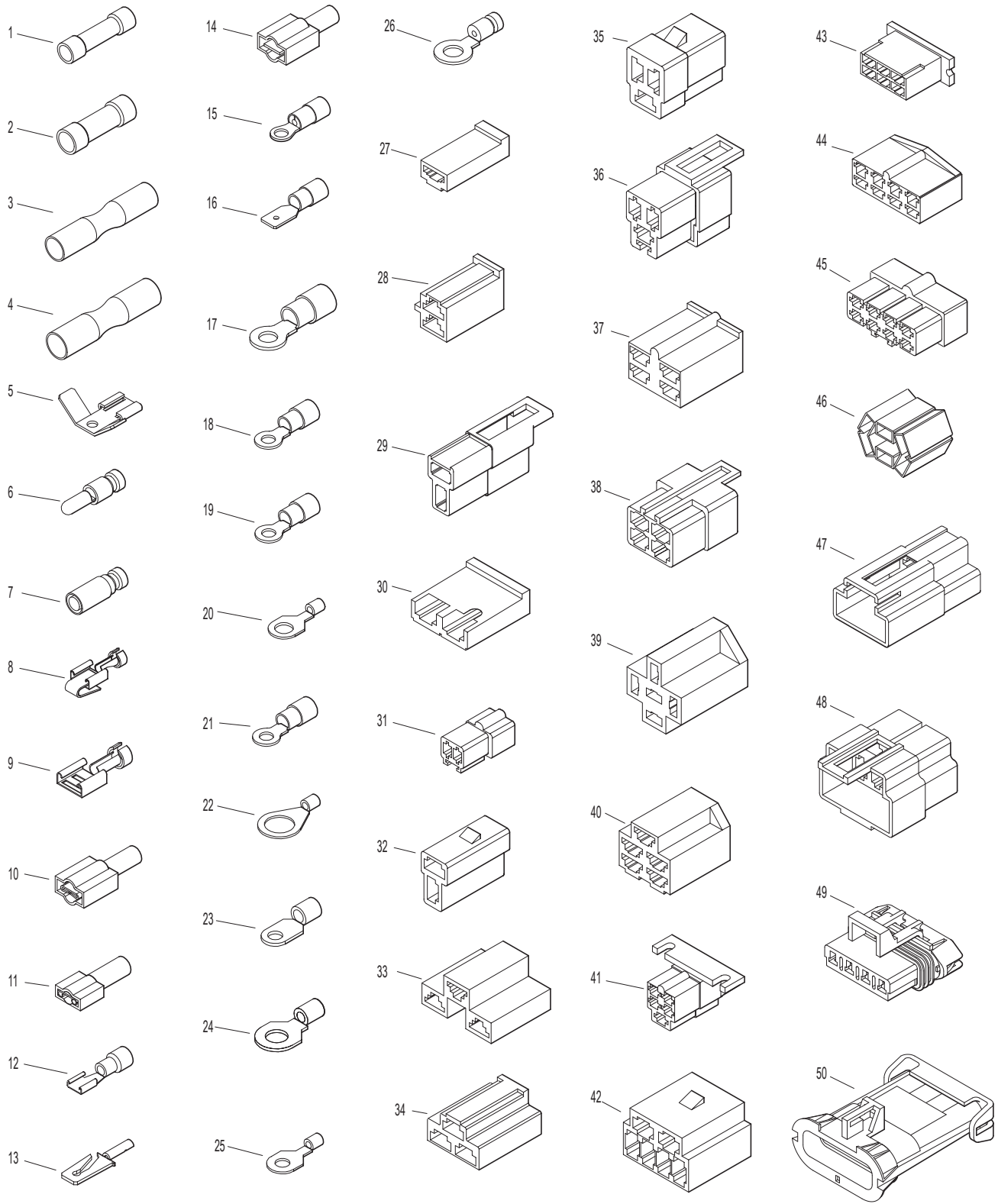


Beginning S/N 150226
 Use only genuine **Walker®** replacement parts.

ELECTRICAL CONNECTORS

ITEM NO.	PART NO.	DESCRIPTION	NO. REQ'D	ITEM NO.	PART NO.	DESCRIPTION	NO. REQ'D
Electrical Wiring Service Parts				29	7942-1	2-Way Locking Connector, Female	*
1	5996-1	16-14 GA Butt Connector	*	30	7942-2	2-Way Connector, Male	*
2	5996-11	12-10 GA Butt Connector	*	31	7942-3	2-Way Connector, Female	*
3	7942-14	16-14 GA Shrink Connector	*	32	7942-10	2-Way Locking Connector, Male	*
4	7942-13	12-10 GA Shrink Connector	*	33	5940-8	3-Way Connector, Male	*
5	5995-1	Wire Terminal Adapter	*	34	7942-9	3-Way Connector, Male	*
6	5996-4	16-14 GA Bullet Conn., Male	*	35	8944	3-Way Locking Connector, Male	*
7	5996-5	16-14 GA Bullet Conn., Female	*	36	8944-1	3-Way Locking Connector, Female	*
8	5940-4	16-14 GA Spg. Loaded Term., Female	*	37	7942-11	4-Way Connector, Male	*
9	5940-7	Wire Clip, Female	*	38	7942-12	4-Way Connector, Female	*
10	5996	1/4 x 16-14 GA QKS Term., Female	*	39	7942-5	5-Way Connector, Male	*
11	5996-2	3/16 x 22-18 GA QKS Term., Female	*	40	5940-2	5-Way Connector, Male	*
12	7996	16-14 GA QKS Term., Female	*	41	8942-1	5-Way Connector, Female	*
13	5940-5	16-14 GA Spg. Loaded Term., Male	*	42	7942-6	6-Way Connector, Male	*
14	5996-0	1/4 x 22-18 GA QKS Term., Male	*	43	7942-7	6-Way Connector, Male	*
15	5996-18	16-14 GA Ring Term. (#8) Nylon Insulated	*	44	7942-8	8-Way Connector, Male	*
16	7996-1	1/4 x 16-14 GA QKS Term., Male	*	45	8942-2	8-Way Connector, Female	*
17	5996-8	6 GA Ring Lug (5/16) Insulated	*	46	8942-3	5-Way Connector, Male	*
18	5996-9	22-18 GA Ring Term. (#10)	*	47	5940-9	3-Way Connector (M)	*
19	5996-10	16-14 GA Ring Term. (5/16) Insulated	*	48	7942-15	6-Way Connector (Female)	*
20	5996-12	12-10 GA Ring Term. (5/16)	*	49	7940-3	Packard Plug (Male)	*
21	5996-13	16-14 GA Ring Term. (#10) Insulated	*	50	7940-4	Packard Plug (Female)	*
22	5996-15	12-10 GA Ring Term. (1/2)	*	* Service Part Only			
23	5996-16	6 GA Ring Terminal (1/4)	*	NOTE: Not all Electrical Connectors are used with all assemblies.			
24	5996-17	16-14 GA Ring Term. (1/4)	*	NOTE: Refer to ELECTRICAL ASSEMBLY , Page 32 for locations of Wiring Harness and of all Electrical Wiring Service Parts.			
25	5996-20	12-10 GA Ring Term. (1/4) Insulated	*				
26	5996-21	12-10 GA Ring Term. (#10) Insulated	*				
27	7942-4	Single Connector, Male	*				
28	8942	2-Way Connector, Male	*				

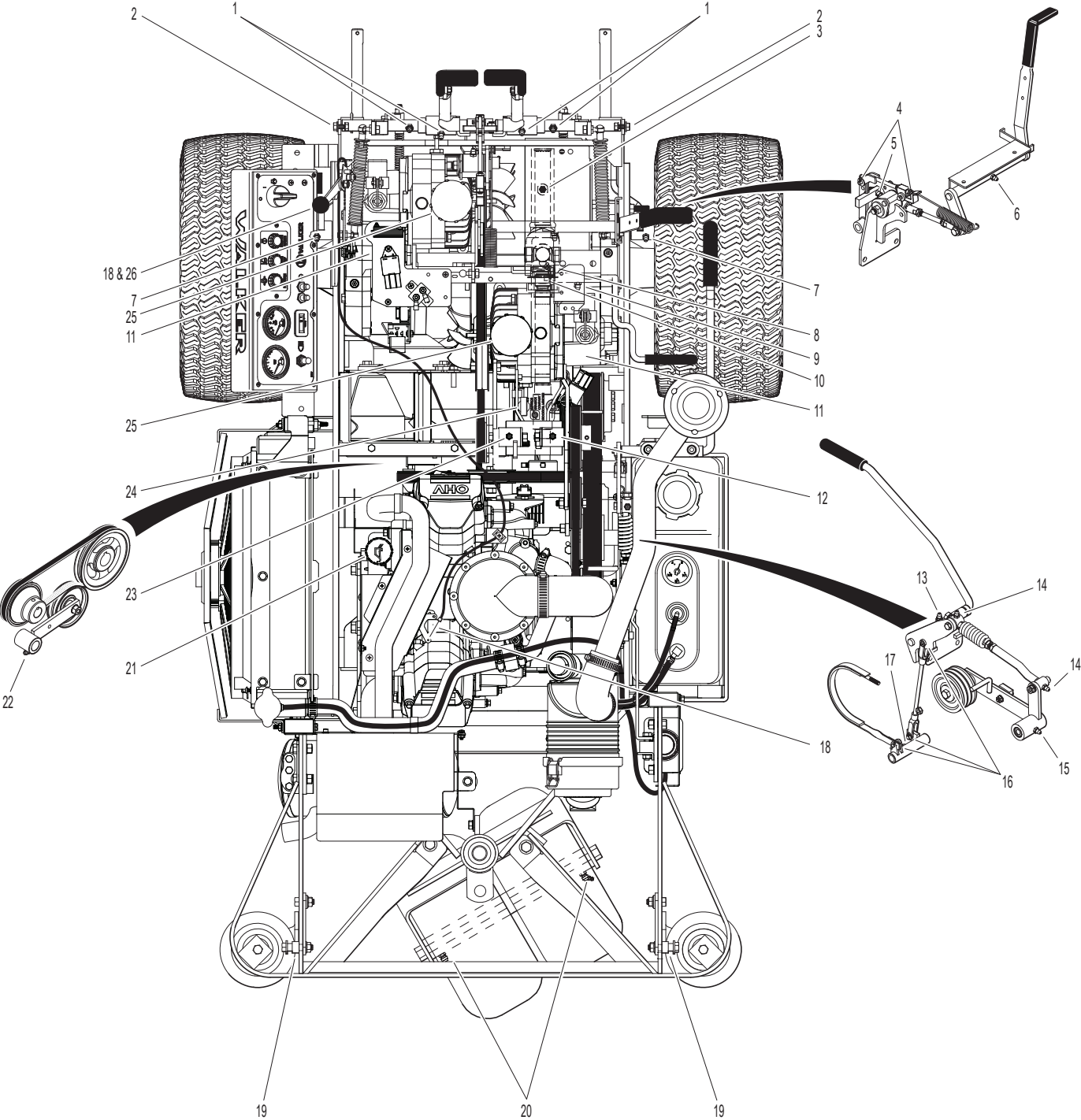
ELECTRICAL CONNECTORS



LUBRICATION POINTS

ITEM NO.	LOCATION	LUBRICATION TYPE	NO. PLACES	ITEM NO.	LOCATION	LUBRICATION TYPE	NO. PLACES
Lubrication Points				17	Brake Actuator Pivot	Grease	1
1	Steering Lever Pivot	Grease	4	18	Throttle Control Cable Ends	Oil	2
2	Body Hinge Point	Oil	2	19	Catcher Hinge Point	Oil	2
3	Deck-to-PTO Coupling (Grease Spline Slide Area)	Grease	1	20	Rear Wheel Bearing	Grease	2
4	FSC Actuator Rod Pivots	Oil	2	21	Engine Oil	Oil**	1
5	(FSC) Friction Body Pivot	Grease	1	22	Belt Tightener Pivot, Blower Drive (GHS Model Only)	Grease	1
6	FSC Lever Pivot	Grease	1	23	Belt Tightener Pivot, Ground Drive	Grease	1
7	Deck Support Arm Pivot	Grease	2	24	PTO Gearbox Dipstick	Oil**	1
8	Universal Joint Tube Assembly	Grease*	1	25	Hydrostatic Drive	Oil**	2
9	Parking Brake Lever	Grease	1	26	Throttle Control Pivot	Oil	1
10	Universal Joint Quick Connect Spline (Grease Slide Area)	Grease	1	* Grease every 25 hours.			
11	Gear Axle	Oil**	2	** Refer to T30i Operator's Manual for procedure for checking and changing oil in Engine Crankcase, Hydrostatic Transmissions and Gear Axles.			
12	Belt Tightener Pivot, Jackshaft Drive	Grease	1	NOTE: See Model T30i Operator's Manual (8000-35) for proper lubrication intervals.			
13	PTO Clutch Lever Pivot	Grease	1				
14	Clutch Actuator Spring Assembly	Grease	2				
15	Belt Tightener Pivot, PTO Clutch	Grease	1				
16	Brake Actuator Rod and Brake Band Pivot Pins (Clevis)	Oil	3				

LUBRICATION POINTS



Beginning S/N 150226
Use only genuine Walker® replacement parts.

WIRING SCHEMATIC

WALKER MODEL T30i Beginning S/N 152086

- S1 = START CIRCUIT
- S2 = START / ACCESSORY CIRCUIT
- M = MAGNETO GROUND CIRCUIT
- B = BATTERY CIRCUIT
- A = ACCESSORY CIRCUIT
- G = GROUND CIRCUIT
- J1 = #1 FUEL INJECTOR
- J2 = #2 FUEL INJECTOR
- J3 = THROTTLE POSITION SENSOR
- J4 = OIL TEMP SENSOR
- J5 = OXYGEN SENSOR
- J6 = REGULATOR / RECTIFIER
- J8 = ENGINE GROUND
- J10 = #1 IGNITION COIL
- J11 = #2 IGNITION COIL
- J12 = #1 IGNITION COIL
- J13 = #2 IGNITION COIL
- J14 = IGNITION COIL GROUND
- J20 = SPEED PICK-UP SENSOR

RELAY - A	
PTO RELAY	
OFF	30 + 87A
START	30 + 87A
PTO ON	OPEN

RELAY - B	
START RELAY	
OFF	OPEN
START	30 + 87
RUN	OPEN

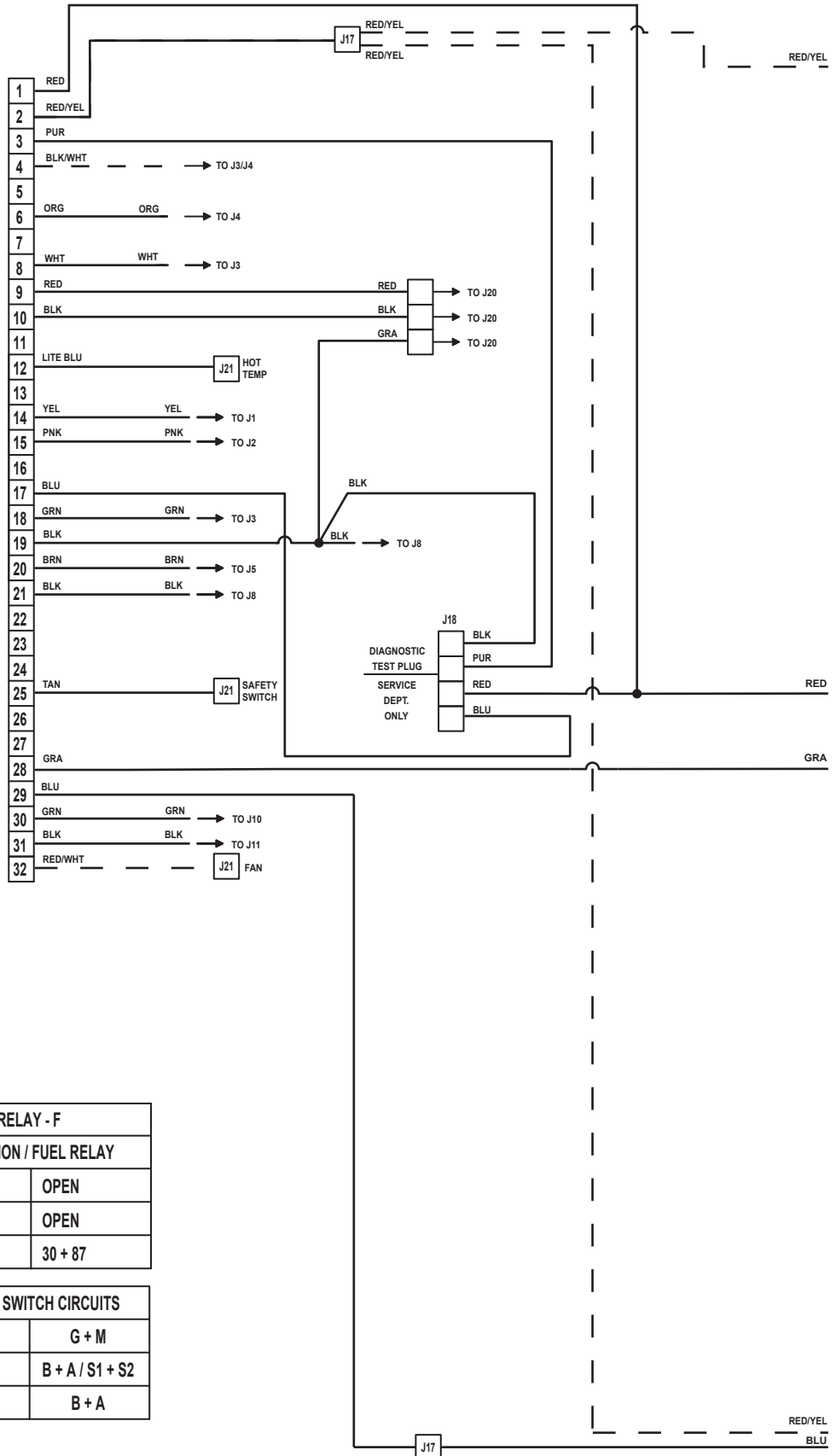
RELAY - C	
FAN INTERRUPT RELAY	
OFF	30 + 87A
START	OPEN
PTO ON	30 + 87A

RELAY - D	
FAN SPEED CONTROL	
OFF	30 + 87A
START	30 + 87A
PTO ON	30 + 87

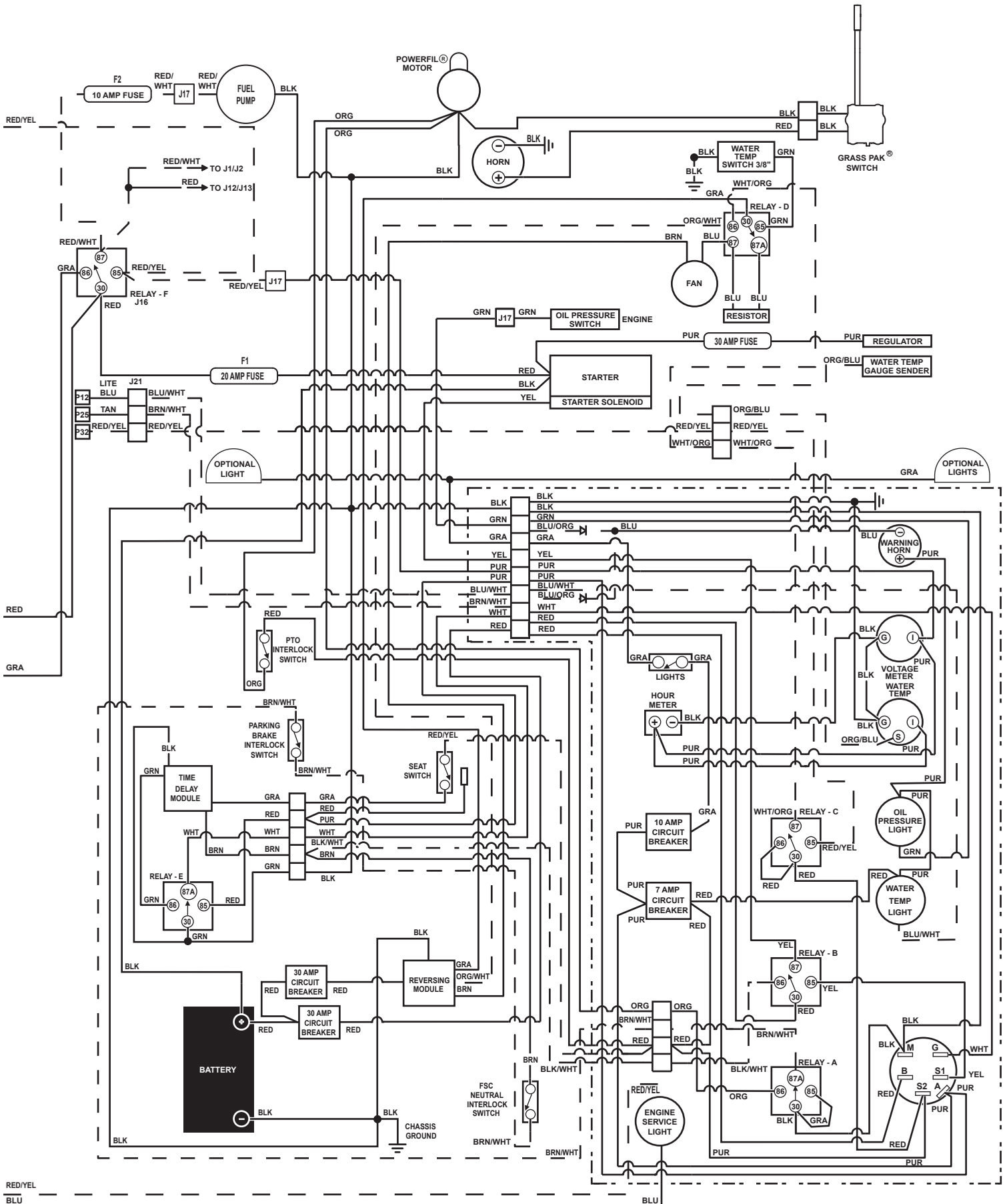
RELAY - E	
DELAY RELAY	
OFF	30 + 87A
START	OPEN
PTO ON	OPEN

RELAY - F	
IGNITION / FUEL RELAY	
OFF	OPEN
START	OPEN
PTO ON	30 + 87

IGNITION SWITCH CIRCUITS	
OFF	G + M
START	B + A / S1 + S2
RUN	B + A



WIRING SCHEMATIC



LIMITED WARRANTY FOR WALKER COMMERCIAL RIDER MOWER

1. WHAT THIS WARRANTY COVERS, AND FOR HOW LONG:

Walker Manufacturing company will, at its option, repair or replace, without charge, any part covered by this warranty which is found to be defective in material and/or workmanship within two (2) years* after the date of sale to the original retail purchaser unless the product is used for rental purposes, in which case this warranty is limited to ninety (90) days. At Walker's request, customer will make the defective part available for inspection by Walker and/or return the defective part to Walker, transportation charges prepaid. All parts and components of the Walker Mower are covered by this warranty **except** the following components which are warranted separately by their respective manufacturers:

Kohler Engine
Battery

The available warranties covering these items are furnished with each mower. Walker does not assume any warranty obligation, liability or modification for these items, which are covered exclusively by the stated warranty of the respective manufacturers noted above.

* Extended warranties are offered for the following powertrain components:

- A three (3) year unlimited hour warranty is offered for the Walker P/N 6200-9 Gear Axle Assembly.
- A three (3) year or 3000 hour (whichever comes first) warranty is offered for Eaton Model 7 Hydrostatic transmissions; covers full cost of replacement up to 1000 hours of use, and after 1000 hours warranty coverage is prorated against 3000 hours.

2. WHAT THIS WARRANTY DOES NOT COVER:

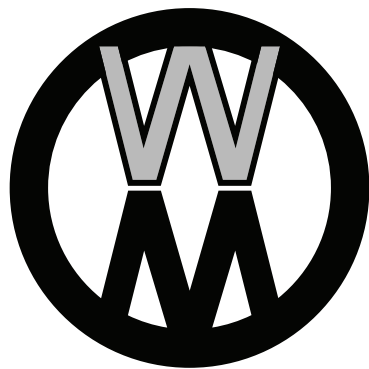
- A. This warranty does not cover defects caused by depreciation or damage caused by normal wear, accidents, improper maintenance, improper use or abuse of the product, alterations, or failure to follow the instructions contained in the Operator's Manual for operation and maintenance.
- B. The customer shall pay any charges for making service calls and/or for transporting the mower to and from the place where the inspection and/or warranty work is performed.

3. HOW TO OBTAIN SERVICE UNDER THIS WARRANTY:

Warranty service can be arranged by contacting the dealer where you purchased the mower or by contacting Walker Manufacturing Company, 5925 East Harmony Road, Ft. Collins, CO 80528. Proof of the date of purchase may be required to verify warranty coverage.

4. WARRANTY LIMITATION:

- A. **THERE IS NO OTHER EXPRESS WARRANTY. ANY WARRANTY THAT MAY BE IMPLIED FROM THIS PURCHASE INCLUDING MERCHANTABILITY AND FITNESS FOR A PARTICULAR PURPOSE IS HEREBY LIMITED TO THE DURATION OF THIS WARRANTY AND TO THE EXTENT PERMITTED BY LAW ANY AND ALL IMPLIED WARRANTIES ARE EXCLUDED.** Some states do not allow limitations on how long an implied warranty lasts, so the above limitations may not apply to you.
- B. **WALKER WILL NOT BE LIABLE FOR ANY INCIDENTAL, CONSEQUENTIAL, OR SPECIAL DAMAGES AND/OR EXPENSES IN CONNECTION WITH THE PURCHASE OR USE OF THE MOWER.** Some states do not allow the exclusion or limitation of incidental or consequential damages, so the above limitation(s) or exclusion(s) may not apply to you.
- C. Only the warranty expressed in this limited warranty shall apply and no dealer, distributor, or individual is authorized to amend, modify, or extend this warranty in any way. Accordingly, additional statements such as dealer advertising or presentations, whether oral or written, do not constitute warranties by Walker, and should not be relied upon.
- D. This warranty gives you specific legal rights, and you may also have other rights which vary from state to state.



WALKER

WALKER MFG. CO. • 5925 E. HARMONY ROAD, FORT COLLINS, CO 80528 • (970) 221-5614
FORM NO. 051420 PRINTED IN USA www.walker.com ©2020 WALKER MFG. CO