

WALKER

A17 Operator Soft Cab

Operator's Manual

Assembly, Attaching, Operation, and Maintenance

Compatible with models: MT, MD, MC, MB



Please Read and Save These Instructions

For Safety, Read All Assembly and Operation Instructions
Prior to Operating Attachment

Effective Date: 10.23.20

P/N: 7662-13



Foreword

Thank you. . .for purchasing a Walker Operator Soft Cab. Every effort has been made to provide you with the most reliable equipment on the market, and we are sure you will be among our many satisfied customers. If for any reason this product does not perform to your expectations, please contact your local dealer. Every customer is important to us. Your satisfaction is our goal.

Please. . .read this manual thoroughly! Before you operate your machine, please read this entire manual. Some of the information is crucial for proper operation - it will help protect your investment and ensure that the equipment performs to your satisfaction. If anything in this manual is confusing or hard to understand, please contact your local authorized dealer or call our service department, at (970) 221-5614, for clarification before operating or servicing this machine.

This manual covers the A17 Operator Soft Cab and the individual mounting kits for the supported tractors.

All shields and guards must be in place for the proper and safe operation of this machine. Where they are shown removed in this manual, it is for illustration purposes only. **Do not operate this equipment unless all shields and guards are in place.**

Walker Mfg. Co. is continually striving to improve the design and performance of its products. We reserve the right to make changes in specifications and design without thereby incurring any obligation relative to previously manufactured products.

Sincerely,
WALKER MANUFACTURING COMPANY

A handwritten signature in black ink that reads "Bob Walker". The signature is fluid and cursive.

Bob Walker, Chairman

Table of Contents

General Information 1

Highlighted Information	1
Glossary	1
Servicing of Operator Soft Cab	1
Unit Description	1

Specifications 2

Required Supporting Kits and Accessories	2
--	---

Component Identification 3

Safety Instructions 4

Before Operating	4
Operating	5
Maintenance	6

Installation Instructions 8

Install Operator Cab Mounts	8
<i>MT/MD Side Mounts</i>	8
<i>MC Side Mounts</i>	9
<i>MB Side Mounts</i>	11
Assemble Operator Soft Cab	12
Install Operator Soft Cab	12

Operating and Maintenance 17

Operating	17
<i>Windshield Wiper</i>	17
<i>Headlights</i>	17
Maintenance	17
<i>Windshield Wiper Blade Replacement</i>	17
<i>Lubrication</i>	17
<i>End of Season Storage</i>	17

Parts Lists and Diagrams 18

A17 Operator Soft Cab Parts List	18
Operator Soft Cab Mount Kits Parts Lists	19
A17 Operator Soft Cab Assembly Diagram	20
Operator Cab Electrical Diagram (MT/MD)	21
Operator Cab Fabric and Mounts Diagram (MT/MD)	22
Operator Cab Electrical Diagram (MC)	23
Operator Cab Fabric and Mounts Diagram (MC)	24
Operator Cab Electrical Diagram (MB)	25
Operator Cab Fabric and Mounts Diagram (MB)	26

General Information

HIGHLIGHTED INFORMATION

Walker Manufacturing recommends that any service requiring special training or tools be performed by an authorized Walker Mower dealer. There are several general practices to be aware of in the area of safety. Most accidents associated with the operation or maintenance of a Walker Mower are caused by disregarding basic safety precautions or specific warnings. Such accidents, in most cases, can be prevented by being aware of the dangers present.

Information of special importance has been highlighted in bold type in this manual. Refer to **Safety Instructions on page 4** for the meanings of **DANGER, WARNING, CAUTION, IMPORTANT**, and **NOTE**.

GLOSSARY

There are many terms that are either unique to this equipment or that are used as acronyms. The following terms and their definitions will help while using this manual:

- **FORWARD SPEED CONTROL (FSC)** controls the maximum forward speed of the tractor; functioning as a cruise control.
- **IMPLEMENT** refers to the dozer blade, rotary broom, two-stage snowblower, or debris blower used with the tractor with an implement hitch installed.
- **LEFT HAND (LH)** refers to the left-hand side of the tractor when the operator is seated facing forward in the tractor seat.
- **POWER TAKE-OFF (PTO)** transmits engine power to run the cutter blades.
- **RIGHT HAND (RH)** refers to the right-hand side of the tractor when the operator is seated facing forward in the tractor seat.
- **STEERING LEVERS** steer the tractor by controlling the two transaxles.
- **TRACTOR** is the prime mover, including the engine, drivetrain, operator seat, and controls to operate the mower.

SERVICING OF OPERATOR SOFT CAB

Only routine maintenance and general service instructions are provided in this manual. **Any unauthorized work done** during the warranty period **may void the warranty**. If you have any difficulty finding an authorized outlet or obtaining warranty service, please contact our Service Department for assistance:

Walker Manufacturing Company
5925 E. Harmony Road
Fort Collins, CO 80528
1-970-221-5614
www.walker.com

UNIT DESCRIPTION

The Operator Soft Cab is designed to shield the operator from winter weather when using the 42" Snow Blower, 47" Rotary Broom and 48" Dozer Blade. The cab features a hinged door for operator entry, glass windshield, electric windshield wiper and LED headlights. A removable canvas flap attaches to the rear of the cab and covers the open area between the operator seat and top of the catcher box or dump box; the canvas flap raises to allow the tractor body to be raised for maintenance.

The **Implement Hitch Mount (H10 or H21)** is **required** to mount the Operator Soft Cab on the tractor. The Operator Soft Cab fits into mounts that will be added to the side of the implement hitch and tractor chassis during the assembly process described in this manual. **Tractor specific mounting kits must be purchased separately.**

Specifications

MODEL	OPERATOR SOFT CAB (A17)
Height* in. (cm)	64 (163)
Width in. (cm)	35 (89)
Length in. (cm)	42 (107)
Weight lb (kg)	54 (25)
Windshield Wiper Motor	12 Volt DC Electric, Operated by Toggle Switch Mounted in Soft Cab
Headlights	12-48 Volt DC LED (1700 Lumens)

NOTE: The manufacturer reserves the right to make changes in specifications shown herein at any time without notice or obligation.

* Installed on an MT tractor. This value may vary slightly due to height differences between tractors.

NOTE: An optional **Front Cab Extension Flap (P/N 7661-4)** is available to enclose the front of the cab and protect the operator when using the Dozer Blade Implement. Do not use when operating an implement with a PTO drive shaft.

NOTE: The Operator Soft Cab (A17) is not compatible with the tractors that have ROPS installed.

REQUIRED SUPPORTING KITS AND ACCESSORIES

To install the Operator Soft Cab, a mounting bracket kit and an implement hitch are required. The table below identifies the requirements for each supported tractor.

MODEL	MOUNTING BRACKET KIT	IMPLEMENT HITCH MODEL
MB**	P/N 7660-24	H21
MC	P/N 7660-25	H10
MT/MD	P/N 7660-23	H10

** Only compatible with MB23 and MB27i. Other MB tractor models are not supported.


Component Identification



A17 Operator Soft Cab, LH View

Safety Instructions

Pay particular attention to any information labeled **DANGER, WARNING, CAUTION, IMPORTANT, and NOTE** in this manual.

When you see the Safety Alert Symbol (), read, understand, and follow the instructions. Failure to comply with safety instructions may result in personal injury.

The seriousness or degree of importance of each type of information is defined as follows:

DANGER

An **IMMEDIATE** hazard that **WILL** result in severe personal injury or **DEATH**, if warning is ignored and proper safety precautions are not taken.

WARNING

A **POTENTIAL** hazard that **COULD** result in severe personal injury or **DEATH**, if warning is ignored and proper safety precautions are not taken.

CAUTION

Possible hazards or unsafe practices that **MAY** result in **MODERATE** personal injury or property damage, or machine damage, if warning is ignored and proper safety precautions are not taken.

IMPORTANT: Identifies mechanical information demanding special attention, since it deals with the possibility of damaging a part or parts of the machine.

NOTE: Identifies information worthy of special attention.

Walker Manufacturing cannot predict every potentially dangerous situation. Therefore, items labeled as such in this manual do not cover all conceivable situations. Any person using procedures, tools, or control techniques not recommended by Walker Manufacturing must take full responsibility for safety.

The Walker Rider Lawnmower has been designed with many safety features to protect the operator from personal harm or injury. However, it is necessary for the operator to use safe operating procedures at all times. **Failure to follow safety instructions contained in this manual may result in personal injury or damage to equipment or property.**

If you have any questions concerning setup, operation, maintenance, or safety, please contact your authorized Walker Mower Dealer or call Walker Manufacturing Company at (970) 221-5614.

BEFORE OPERATING

1. **Read and understand the contents of this Operator's Manual before starting and operating the machine.** Become thoroughly familiar with all machine controls and how to stop the machine and disengage the controls quickly. Replacement Operator's Manuals are available by sending the Model and Serial Number to:

Walker Manufacturing Company
5925 East Harmony Road
Fort Collins, CO 80528

2. **Never allow children to operate a rider mower.** Do not allow adults to operate without proper instruction.
3. **Clear the area to be mowed of any foreign objects** which may be picked up and thrown by cutter blades. Pick up all sticks, stones, wire, and any other debris.
4. Keep everyone, especially children and pets, a safe distance away from the area being mowed. **Do not mow with bystanders in the area.**
5. Do not operate the machine barefoot or wearing sandals, sneakers, tennis shoes, or similar lightweight footwear. **Wear substantial protective footwear.**

6. Do not wear loose fitting clothing that could get caught in moving parts. Do not operate this machine while wearing shorts; **always wear adequate protective clothing**, including long pants. Wearing safety glasses, safety shoes, and a helmet is advisable and required by some local ordinances and insurance regulations.
7. Prolonged exposure to loud noise can cause impairment or loss of hearing. **Operator hearing protection is recommended.** Wear a suitable hearing protective device, such as earmuffs or earplugs.
8. **Keep all protective shields and safety devices in place.** If a protective shield, safety device, or decal is damaged, unusable, or missing, repair or replace it **before** operating the machine.
9. **Be sure interlock switches are functioning correctly**, so the engine cannot be started unless the Forward Speed Control lever is in the **NEUTRAL-PARK** position, the PTO clutch switch is in the **DISENGAGED** position, and the Parking Brake is in the **ENGAGED** position. Also, the engine should stop if the operator lifts off the seat with any one or more of these controls in the operating position: (1) Forward Speed Control (FSC) out of **NEUTRAL-PARK**, (2) PTO Clutch **ENGAGED**, or (3) Parking Brake **DISENGAGED**.
10. **Handle gasoline with care.** Gasoline is highly flammable and its vapors are explosive:
 - a. Use an approved fuel container.
 - b. Never add fuel to a running engine or hot engine (allow hot engine to cool several minutes).
 - c. Keep matches, cigarettes, cigars, pipes, open flames, or sparks away from the fuel tank and fuel container.
 - d. Always fill the fuel tank outdoors using care. Fill to about one inch from the top of the tank. Use a funnel or spout to prevent spilling.
 - e. Replace the machine fuel cap and container cap securely and clean up any spilled fuel before starting the engine.

11. **Never attempt to make any adjustments while the engine is running**, except where specifically instructed to do so.
12. Snow or leaves can sometimes hide objects that might clog the snowblower or debris blower chute, or otherwise cause damage. Clear the area of doormats, sleds, boards, wires, and other debris.
13. The electrical system battery contains sulfuric acid. Avoid any contact with skin, eyes, and clothing. Keep the battery and acid out of reach of children.

**WARNING**

This product can expose you to chemicals including Di-(2-ethylhexyl) phthalate, which is known to the State of California to cause birth defects or other reproductive harm. For more information go to www.P65Warnings.ca.gov.

OPERATING

NOTE: Refer to your tractor Operator's Manual for safety instructions for operating the tractor.

1. **Operate the machine only in daylight** or in good artificial light with good visibility of areas being cleaned.
2. Sit on the seat when starting the engine and operating the machine. Keep feet on footrests at all times when the tractor is moving and/or the implement is operating.
3. For a beginning operator, **learn to steer (maneuver) the tractor with a slow engine speed before attempting any implement operation.** Be aware that, with the front mounted implement configuration, the back of the machine swings to the outside during turns.

**DANGER**

Do not operate around overhanging tree branches or bushes at the same height as the operator's torso and head where inadvertent contact may cause injury.

4. Remember, for an emergency stop, the forward motion of the tractor can always be stopped by pulling the Forward Speed Control (FSC) into the **NEUTRAL-PARK** position.

5. In case the transmission drive belt breaks during operation, and if the machine is on a slope, the machine will freewheel down the slope. **To maintain control**, immediately (1) Release the steering levers and simultaneously (2) Move the FSC to the **NEUTRAL-PARK** position. When the machine is stopped or moving slowly, engage the parking brake.

NOTE: The emergency stop procedure is exactly the same procedure used to normally stop and park the machine.

6. Disengage the PTO clutch and put the FSC in the **NEUTRAL-PARK** position before starting the engine (an ignition interlock switch normally prevents starting of the tractor if these controls are in the **OPERATING** position).

7. **Do not operate the machine if the operator presence safety switch system is not working.** Verify proper operation by having the operator lift off the seat with the engine running and moving two controls, one at a time; (1) Move the FSC lever out of the **NEUTRAL-PARK** position, and (2) Engage the PTO Clutch. Moving either control should stop the engine immediately.

8. **Do not run the engine in a confined area without adequate ventilation.** Exhaust fumes are hazardous and can be deadly.

9. **Do not carry passengers** - maximum seating capacity is one (1) person.

10. **Avoid sudden starts or stops.** Before backing the machine up, look to the rear to be sure no one is behind the machine. Watch carefully for traffic when crossing or working near roadways.

11. When moving forward, **do not** suddenly put the tractor in reverse by rapidly pulling on the steering levers, especially when going downhill, as this can lift the tractor tail wheel off the ground and set up a bucking motion due to operator overcontrol. If bucking does occur, immediately stop the bucking action by pulling the Forward Speed Control (FSC) lever into the **NEUTRAL-PARK** position.

12. Disengage the PTO clutch when transporting the machine.

13. Do not operate across the face of slopes. Use extreme caution when changing direction on slopes. Do not attempt to operate on steep slopes.

14. Never adjust gauge wheels or skid shoes with the engine running. Before adjusting height or before servicing, stop the engine and remove the ignition key. Wait for all movement to stop before getting off the seat.

NOTE: The PTO brake should stop drive line rotation within five (5) seconds of disengaging the PTO clutch. If the brake is not functioning properly, have it repaired by an authorized dealer immediately.

15. If the implement strikes a solid object or the machine begins to vibrate abnormally, **immediately disengage the PTO clutch, stop the engine, and wait for all moving parts to stop.** Disconnect the fuel solenoid wire [diesel engines] or the spark plug wire(s) [gasoline engines] to prevent accidental starting. Thoroughly inspect the implement and repair any damage before restarting the engine and operating the machine. Make sure implement components are in good condition and all bolts are tight.

16. **Do not touch the engine or muffler while the engine is running** or immediately after stopping the engine. These areas may be hot enough to cause serious burns.

17. When leaving the machine unattended, disengage the PTO clutch, stop the engine, and remove the ignition key.

MAINTENANCE

NOTE: Refer to your tractor Operator's Manual for safety instructions for tractor maintenance.

1. **To prevent accidental starting of the engine** when servicing or adjusting the machine, remove the key from the ignition switch and disconnect the fuel solenoid wire [diesel engines] or the spark plug wire(s) [gasoline engines].

2. **To reduce fire hazards**, keep the engine free of grass, leaves, excessive grease, and dirt.

3. Keep all nuts, bolts, and screws tight **to ensure the machine is in a safe, working condition.**
4. **Perform only maintenance instructions described in this manual.** Unauthorized maintenance operations or machine modifications may result in unsafe operating conditions.
5. If the engine must be running to perform a maintenance adjustment, **keep hands, feet and clothing away from moving parts. Do not wear jewelry or loose clothing.**
6. **Always use proper engine service manuals when working on the engine.** Unauthorized maintenance operations or modifications to the engine may result in unsafe operating conditions.
7. Altering the machine in any manner which adversely affects its operation, performance, durability or use **will VOID the warranty** and may cause hazardous conditions.
8. Never attempt to disconnect any safety devices or defeat the purpose of these safety devices.
9. Do not change the engine governor settings or overspeed the engine. The governor has been factory-set for maximum-safe engine operating speed.
10. **Use genuine factory replacement parts.** Substitute parts may result in product malfunction and possible injury to the operator and/or others.

IMPORTANT: Keep all applicable manuals immediately accessible to anyone who may operate or service this machine.

Installation Instructions

NOTE: These instructions assume that an implement hitch is installed on the tractor. Refer to **Required Supporting Kits and Accessories on page 2** for more information.

NOTE: The Operator Soft Cab (A17) is not compatible with tractors that have ROPS installed.

INSTALL OPERATOR CAB MOUNTS

Each tractor has customized cab mounts that attach to the tractor frame. These mounts are not included with the Operator Soft Cab (A17) and must be purchased separately. Refer to **Required Supporting Kits and Accessories on page 2** for more information.

This section covers installing the operator cab side mounts. Follow the instructions in the appropriate section.

- For installation on the MC, see **MC Side Mounts on page 9**.
- For installation on the MB, see **MB Side Mounts on page 11**.

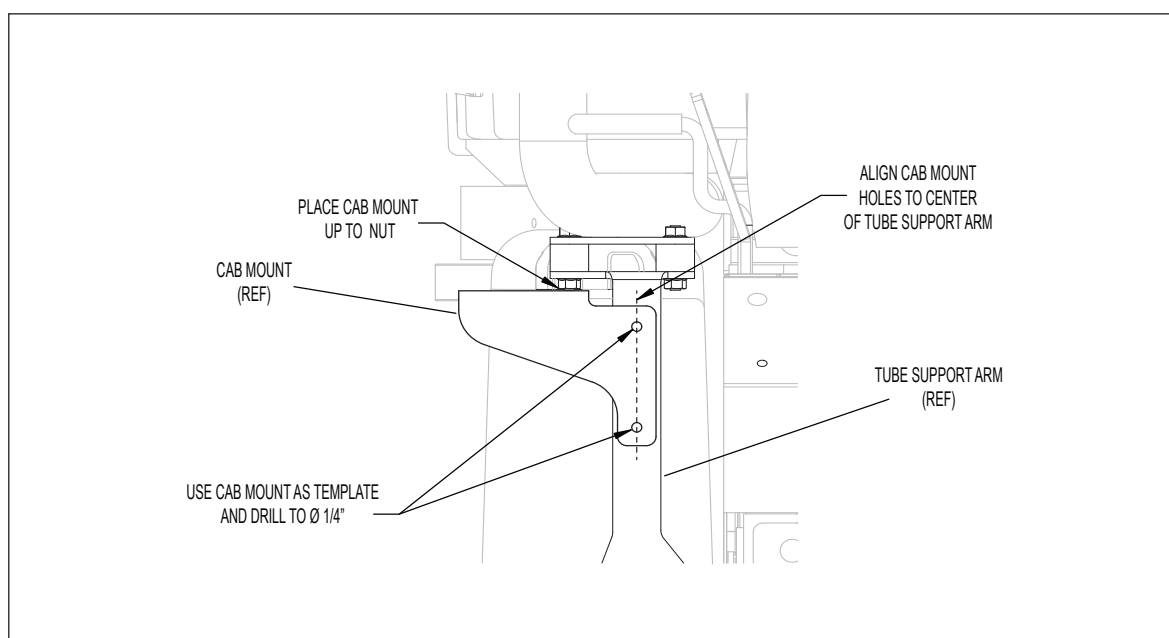
MT/MD Side Mounts

(Kit P/N 7660-23)

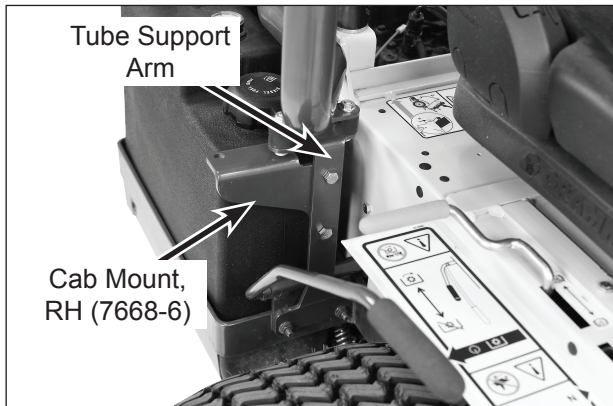
1. Hold the RH Cab Mount in place as shown and mark the tube support arm for drilling mount holes. Remove the two (2) bolts and two (2) whiz lock nuts that fasten the clutch lever assembly to the fuel tank mount, and remove the two (2) lower whiz lock nuts securing the tube support arm to the rubber isolators on the precleaner tube. Remove the tube support arm and drill the holes using a 5/16 in. drill bit as shown in **Drill Holes for RH Side Mount (MT, MD)** illustration.

NOTE: For tractors with the Hi-Dump S/N 20195582 or later, a different mounting bracket is required. Order a Rear Cab Mount/RH (P/N 7668-7). This bracket replaces the existing Tube Support Arm (P/N 7031-4) on the rear of the Axillary Power Terminal.

2. Install the RH Side Mount (P/N 7668-6) on the tube support arm using two (2) 5/16-18 x 3/4 in. (F034) hex bolts and two (2) 5/16-18 (F009) whiz lock nuts. Reinstall the tube support arm as shown in **RH Side Mount Installation (MT, MD)** photo and tighten the hardware.



Drill Holes for RH Side Mount (MT, MD)



RH Side Mount Installation (MT, MD)

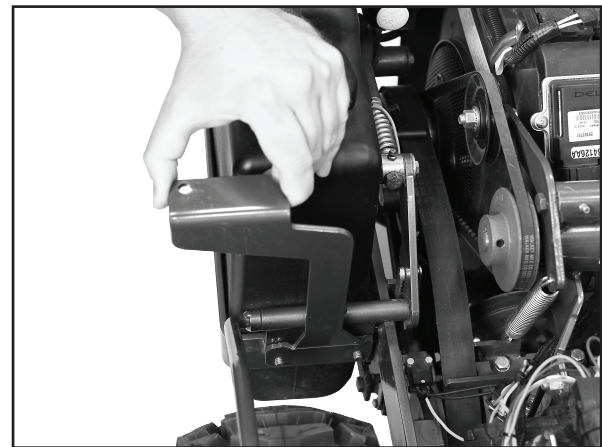
3. Hold the LH Side Mount (P/N 7668-1) in place on the chassis panel box mount angle, and measure 2-5/8 in. forward from the LH front upright to the LH side mount tube as shown in the **Drill Holes for LH Side Mount (MT, MD)** illustration. Make sure the bottom of the LH Side Mount is flush with the bottom of chassis panel box mount angle. Mark and drill two holes using a 5/16 in. drill bit. Install the LH Side Mount using two (2) 5/16-18 x 3/4 in. (F034) hex bolts and two (2) 5/16-18 (F009) whiz lock nuts.

NOTE: Make sure there is approximately 5/16-in. clearance between the hole in the LH Side Mount and the panel guard.

MC Side Mounts

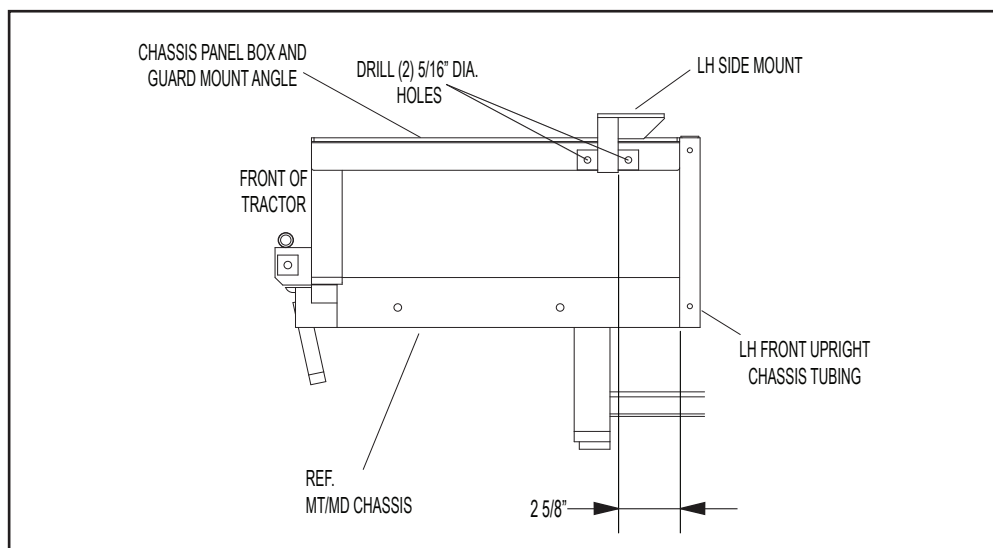
(Kit P/N 7660-25)

1. Remove the two (2) bolts and two (2) whiz lock nuts that fasten the clutch lever assembly to the fuel tank saddle. Install the RH Side Mount (P/N 7669-7) as shown in **RH Side Mount Installation (MC)** photo using the two (2) 5/16-18 x 1-1/2 (F255) hex bolts and two (2) 5/16-18 (F009) whiz lock nuts provided and tighten the hardware.



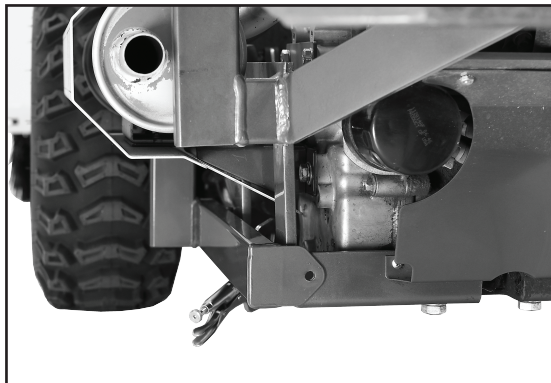
RH Side Mount Installation (MC)

2. Position and clamp the LH Side Mount (P/N 7669-11) into place making sure there is a 1/4-in. gap between the LH Side Mount and the motor mount straps as shown in **LH Side**



Drill Holes for LH Side Mount (MT, MD)

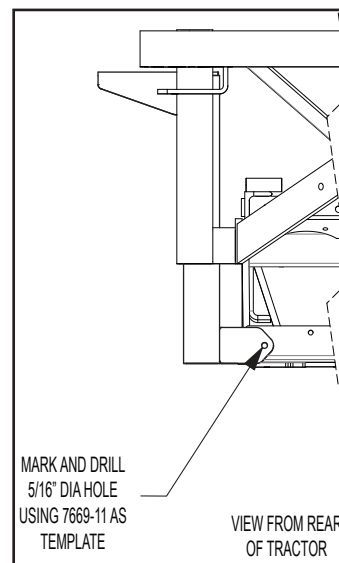
Mount Installation (MC) photo and the **Motor Mount Strap and LH Side Mount Gap (MC)** illustration.



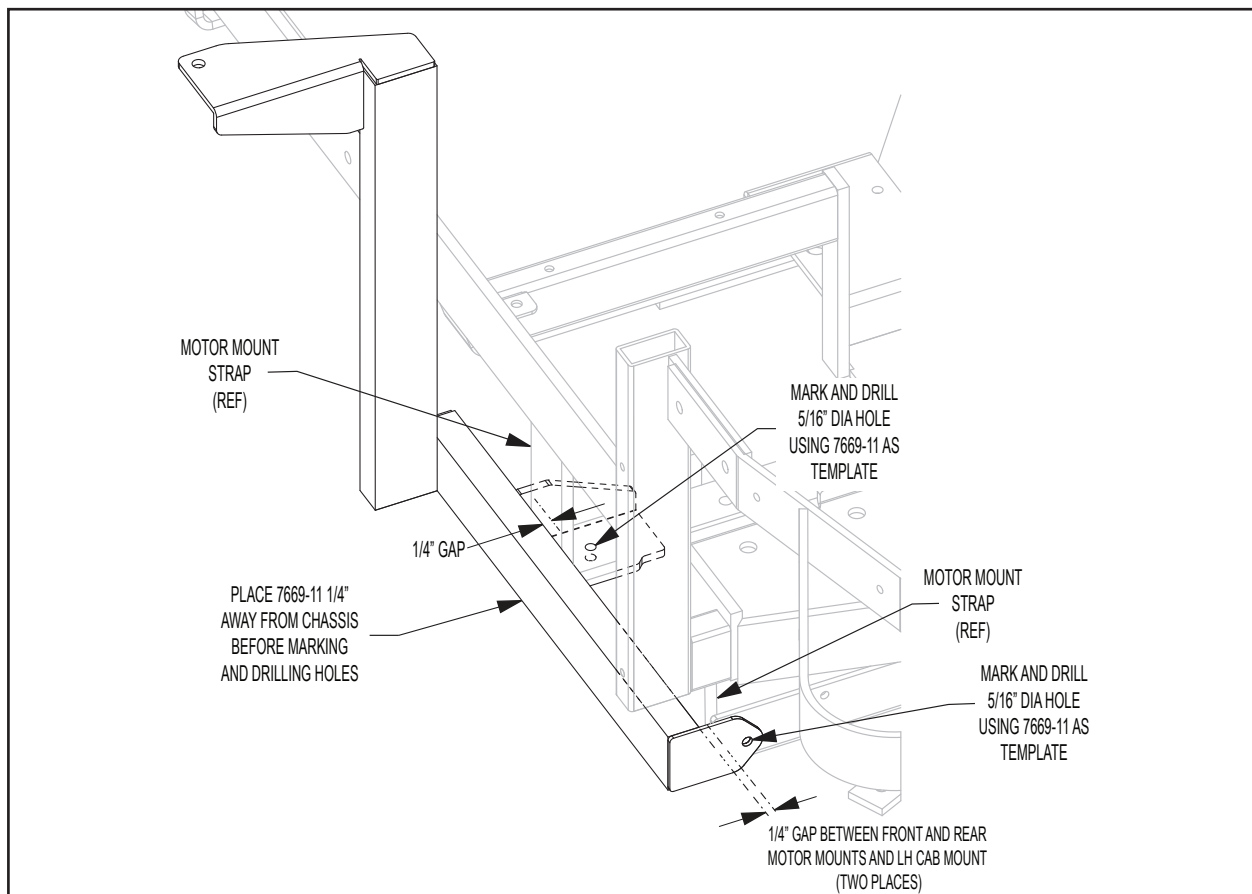
LH Side Mount Installation (MC)

3. Using the LH Side Mount as a template, mark and drill both the rear hole and the lower mounting hole using a 5/16" drill as shown in the **Rear Bolt Location for LH Side Mount (MC)** illustration.

NOTE: In order to drill the lower mounting hole, it is necessary to lift the tractor or tilt-up from the rear for access to the front motor mount.



Rear Bolt Location for LH Side Mount (MC)



Motor Mount Strap and LH Side Mount Gap (MC)

4. Using the 5/16-18 x 5/8 (F091) hex bolt and the 5/16-18 (F009) whiz lock nut at the rear hole and the 5/16-18 x 1 (F093) hex bolt and the F009 whiz lock nut at the hole drilled under the chassis, fasten the LH Side Mount to the tractor.

MB Side Mounts

(Kit P/N 7660-24)

NOTE: The Operator Soft Cab (A17) is only compatible with the MB23 and MB27i.

NOTE: If the optional LED lights are installed on the tractor, they need to be removed before the side mount brackets can be installed.

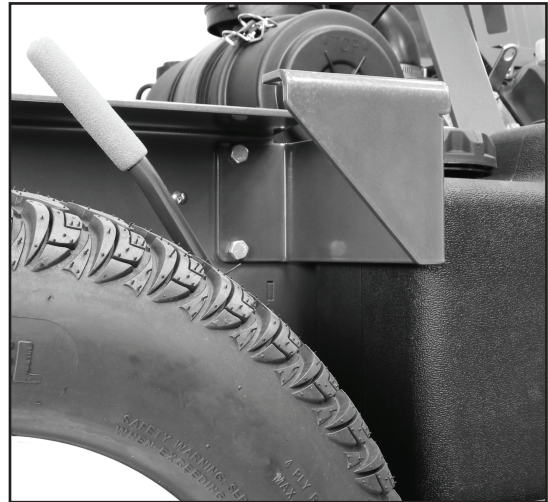
1. Mount the RH Side Mount (P/N 7668-8) using the two (2) 5/16-18 x 3/4 (F034) hex bolts and the 5/16-18 (F009) whiz lock nuts provided through the existing holes on the side of the chassis as shown in the **RH Side Mount (MB)** photo.

NOTE: If the bolts do not freely insert through the hole, use a round file to remove the powder coat from inside the hole.



RH Side Mount (MB)

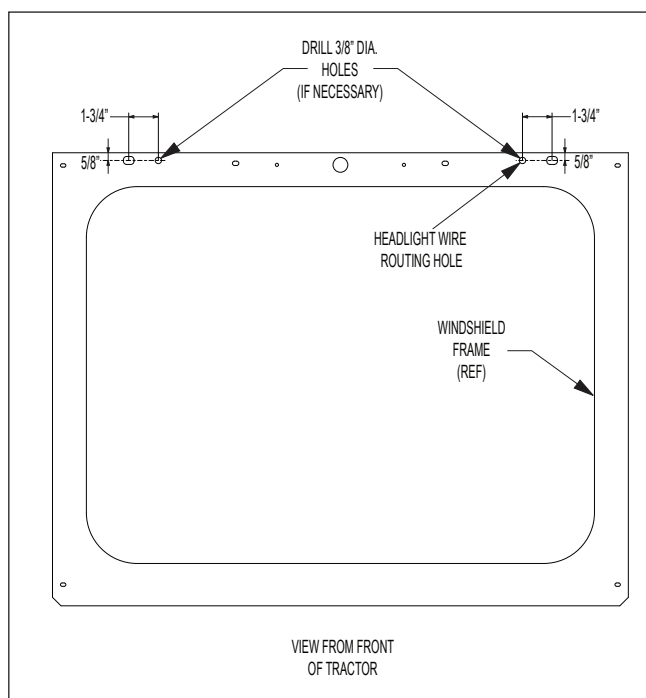
2. Mount the LH Side Mount (P/N 7668-9) using the two (2) 5/16-18 x 3/4 (F034) hex bolts and the 5/16-18 (F009) whiz lock nuts provided through the existing holes on the LH side of the chassis. Mount the bracket as shown in **LH Side Mount (MB)** photo.



LH Side Mount (MB)

ASSEMBLE OPERATOR SOFT CAB

1. Assemble the cab frame as shown in **Assemble Soft Cab Frame on page 13**. Lay the Right Side Cab frame (#8, P/N 7664-2) flat with the pins pointing upward. Attach the Front Support (#10, P/N 7669-1), Top Support (#11, P/N 7669-2), and Cross Tubes (#12, P/N 7669-3), to the Right Side Cab frame. Be sure to install the Front Support with the rope hook toward the RH side (as shown). Attach the Left Side Cab frame (#17, P/N 7664-20) to the Front Support, Top Support and Cross Tubes.
2. Drill the headlight lead wire holes in the windshield frame as shown in **Drill Windshield Frame Dimensions** (if holes are not present).



Drill Windshield Frame Dimensions

3. Rotate the cab frame and stand the cab up. Mount the windshield and frame assembly (P/N 5674) to the cab frame using four (4) 10-24 x 3/8 in. (F128) screws, and four (4) 10-24 (F002) keps nuts as shown in **Assemble Soft Cab Frame on page 13** illustration.

NOTE: Do not install wiper motor at this time.

4. Attach the LH (#26, P/N 7669-9) and RH (#7, P/N 7669-8) Front Cab Mounts to the front

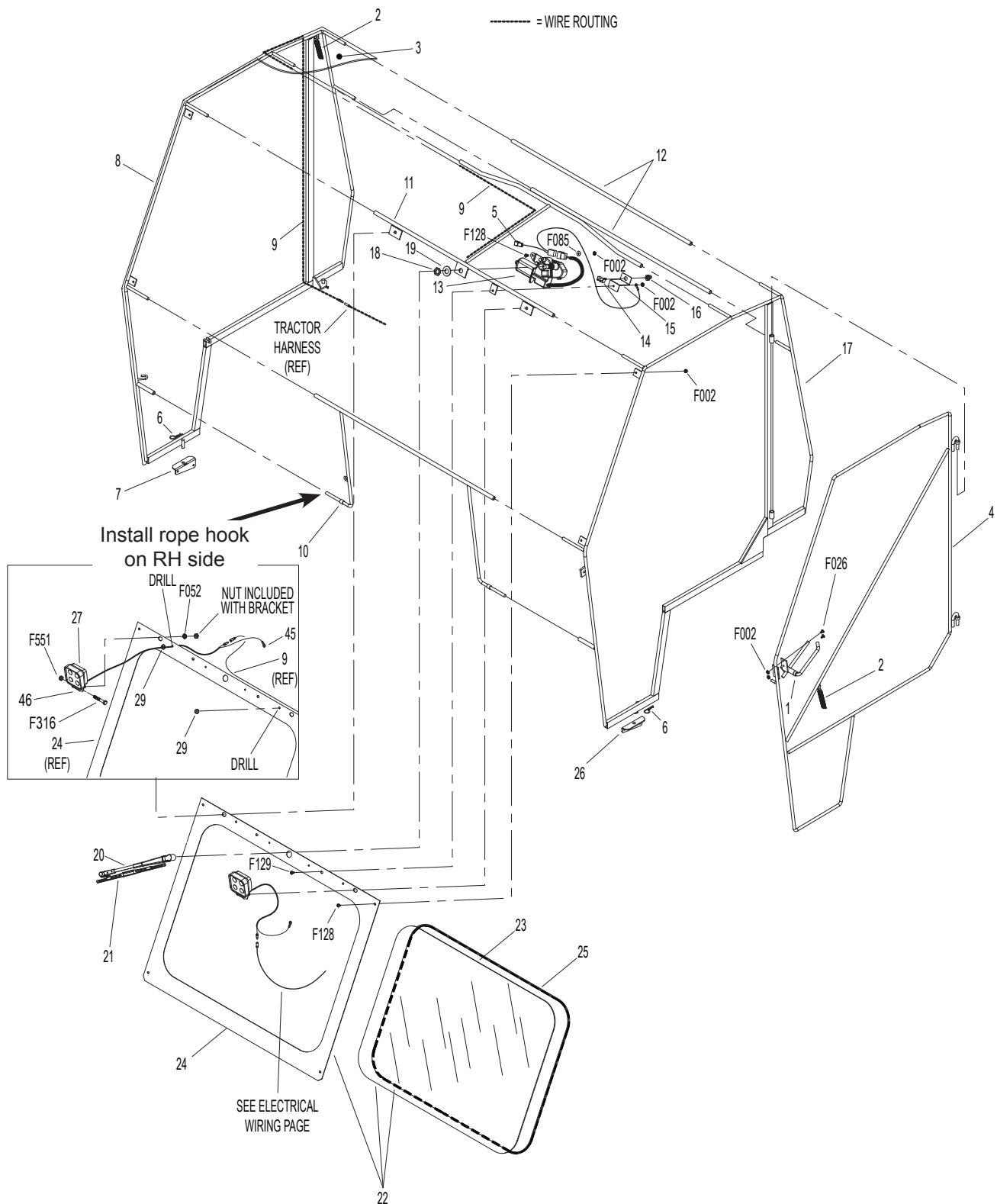
pins on the cab frame. Secure the RH and LH Front Cab Mounts to the cab frame using the hitch pins (P/N 7666).

INSTALL OPERATOR SOFT CAB

1. Install the wire assembly for the tractor using the appropriate electrical diagram.

NOTE: If the optional light bar or LED light kit is already installed on your tractor, disconnect the light's wiring harness from the tractor's main wiring harness, and connect the operator cab wiring harness instead

- For MT/MD, see **Operator Cab Electrical Diagram (MT/MD) on page 21** for details.
 - For MC, see **Operator Cab Electrical Diagram (MC) on page 23** for details.
 - For MB, see **Operator Cab Electrical Diagram (MB) on page 25** for details.
2. If applicable, remove the lift handles from the GHS catcher box
 3. Install the cab frame onto the tractor. Secure cab on RH and LH Side Mounts using two (2) hitch pins (P/N 7666).

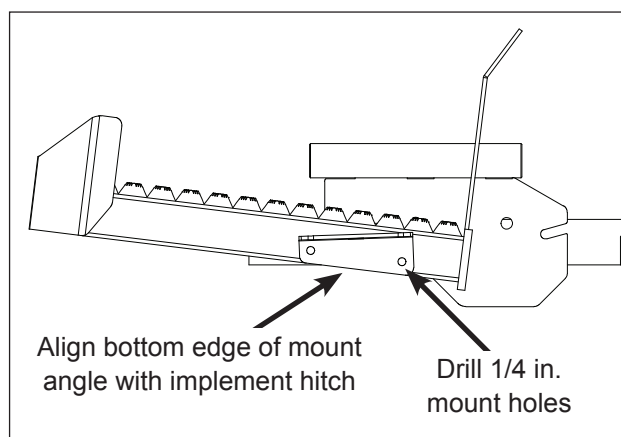


Assemble Soft Cab Frame

4. Install Front Cab Mounts on the implement hitch footrest. With the cab frame in place, position the RH and LH Front Cab Mounts to the RH and LH sides of the implement hitch footrest as shown in **Install Front Cab Mounts** illustration. Adjust the cab so it runs parallel with the top of the tractor body and clamp the Front Cab Mounts to the implement hitch footrest.

NOTE: It is recommended to have a second person hold the cab in place to ensure the mounts are level when locating and drilling these holes.

Using the Front Cab Mounts as a template, drill the mounting hole locations using a 1/4 in. drill bit. Install the Front Cab Mounts to the implement hitch footrest using the two (2) 1/4-20 x 1/2 (F029) hex bolts on each mount, and the two (2) 1/4-20 (F004) keps nuts.

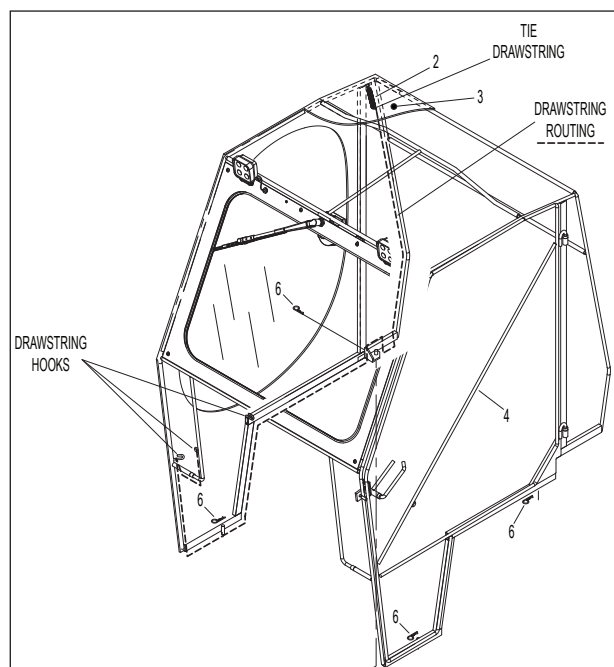


Install Front Cab Mounts

5. Secure the cab on the front mounts with the provided hitch pins (P/N 7666).
6. With the cab frame attached to the tractor, install the Operator Soft Cab fabric (P/N 7661-1). Place the fabric over the cab frame and align as closely as possible. Fasten the velcro around the windshield first. Then, route the drawstring for the RH side, fastening it to the drawstring hooks and tension the drawstring using the extension spring (#2, P/N 5222) as shown in **Drawstring Routing** illustration. Fasten the velcro on the LH side and across the back.

NOTE: It is recommended to have a second person assisting during this step.

NOTE: It may be necessary to repeat the above procedure several times in order to achieve a proper fit as the operator cab fabric will stretch, especially within the first 48 hours after installation.

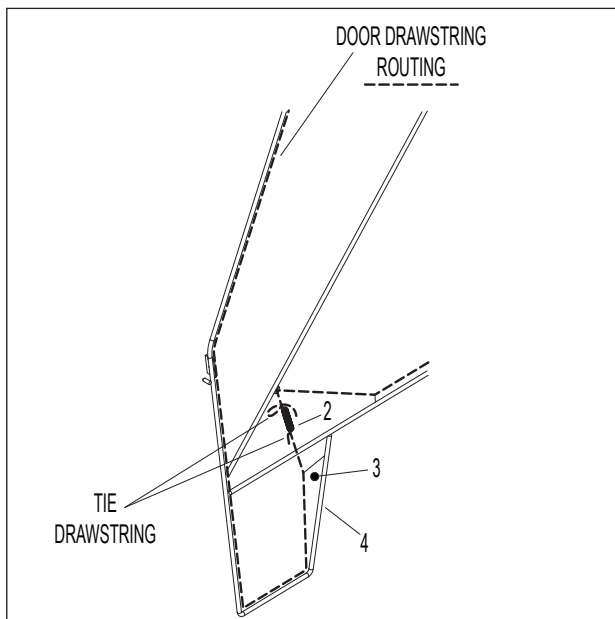


Drawstring Routing

NOTE: It is **highly recommended to wait 48 hours** after initial installation of the canvas cover before cutting holes in the cover and installing lights and wiper motor.

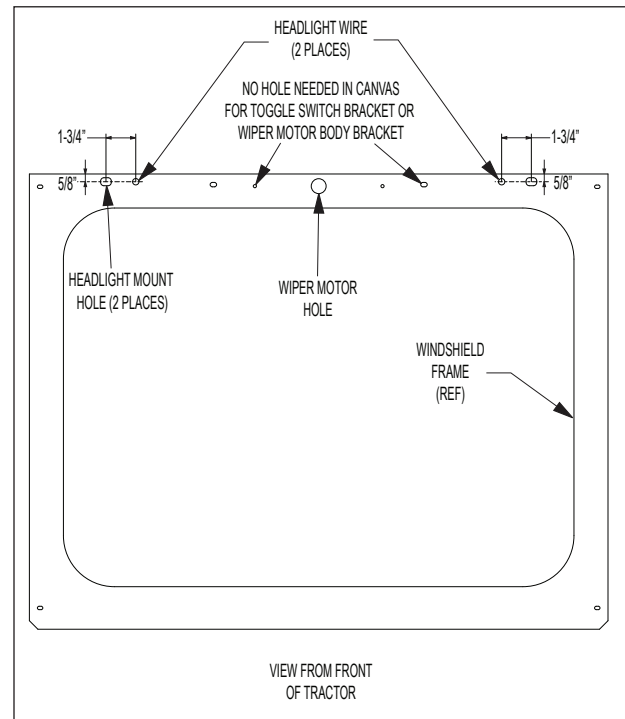
7. Install door fabric onto Cab Door frame (P/N 7662). Route the drawstring for the cab door and fasten it to the drawstring hooks. Tension the drawstring using the extension spring (#2, P/N 5222) as shown in **Soft Cab Door Drawstring Routing** illustration. Mount the Cab Door Handle (P/N 7667) to the door frame and attach the cab door to the operator cab.

NOTE: Door hinges and cab door handle require occasional lubrication.



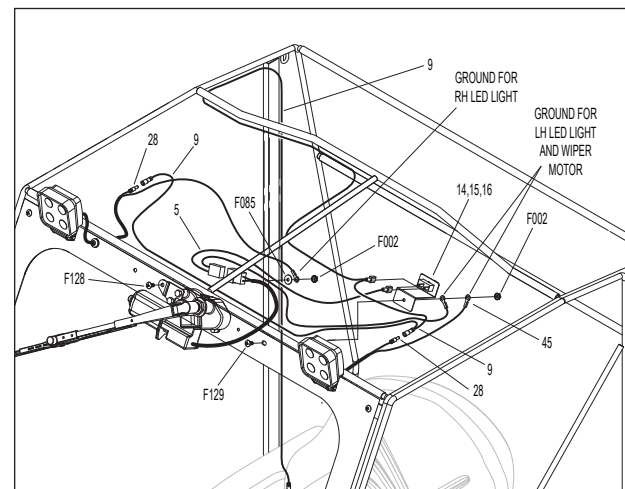
Soft Cab Door Drawstring Routing

8. After 48 hours, verify that canvas is positioned properly on the windshield frame. Then using the windshield frame as a template, cut five (5) holes in the canvas with a sharp knife for the headlight mount bolts, headlight wires, and windshield wiper as shown in **Cut Holes in Canvas** illustration.



Cut Holes in Canvas

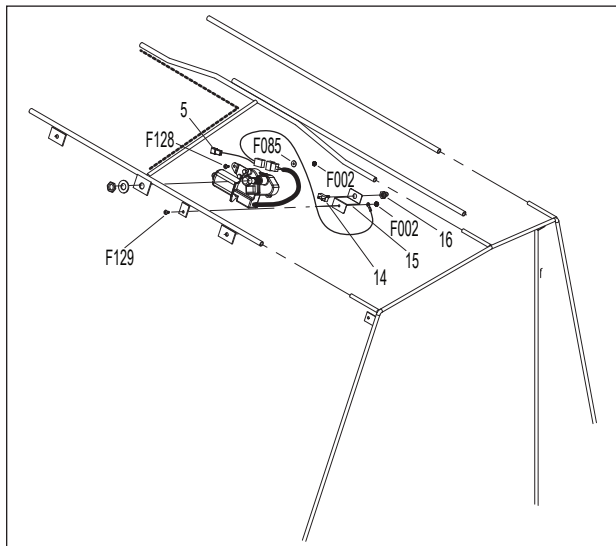
9. Install wiper motor, headlights and On-Off toggle switch mount. Install grommets (P/N 5977-1) into the headlight wire holes and route the wiring for the windshield wiper motor, headlights, and windshield wiper toggle switch as shown in **Soft Cab Internal Wiring** illustration.



Soft Cab Internal Wiring

10. Route and secure the wire harness (#9, P/N 5670-1) to the cab frame using cable ties. Make all the wiring connections including the connection to the tractor's wire assembly that was installed in step 1 on page 12.

11. Mount the Toggle Switch (#14, P/N 5995) to the Switch Mount Bracket (#15, P/N 5667-1) as shown in **Mount Toggle Switch** illustration.



Mount Toggle Switch

12. Install windshield wiper arm.

NOTE: Before installing wiper arm (P/N 5668-1), operate wiper motor to determine the proper arc of travel for the wiper.

Operating and Maintenance

OPERATING

Windshield Wiper

To use the windshield wiper, use the toggle switch mounted on the upper, interior frame of the cab.

NOTE: The headlight switch must be turned on in order to operate the windshield wiper (single circuit).

- Move the toggle switch to the right to operate the windshield wiper.
- Move the toggle switch to the left to stop the windshield wiper.

Headlights

To turn on the headlights, use the headlight toggle switch mounted on the instrument panel.

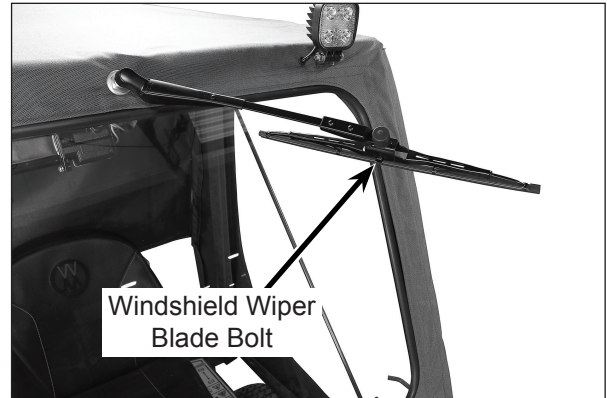
- Move the toggle switch **UP** to turn the headlights on.
- Move the toggle switch **DOWN** to turn the headlights off.

MAINTENANCE

Windshield Wiper Blade Replacement

The windshield wiper blade will wear over time and will need to be replaced.

1. To remove the windshield wiper blade: Pull the windshield wiper arm away from the windshield, and remove the bolt and ESNA nut going through the center of the windshield wiper as shown in **Windshield Wiper Blade Bolt** photo.



Windshield Wiper Blade Bolt

2. Remove the worn wiper, and replace it with a new wiper blade (P/N 5669-1).

Lubrication

The Operator Soft Cab is nearly maintenance free. However, periodic lubrication to the door hinges and door handle will be required.

NOTE: Tractor lubrication points are not shown here. For Tractor lubrication points, refer to the appropriate Tractor Operator's Manual or Illustrated Parts Manual.

End of Season Storage

1. Clean and inspect the cab thoroughly, noting any replacement parts that will be needed before the next season.
2. Repaint all parts from which paint has worn.
3. Check the cab fabric to ensure it is not ripped, or fraying. If needed, order new fabric (P/N 7661-1) for the cab before the next season.
4. Store the cab in a dry place.

Parts Lists and Diagrams

A17 OPERATOR SOFT CAB PARTS LIST

ITEM NO.	PART NO.	DESCRIPTION	NO. REQ'D	ITEM NO.	PART NO.	DESCRIPTION	NO. REQ'D
1	7667	Door Handle, Cab	1	Fasteners			
2	5222	Extension Spring (1/2 x 3-1/4)	2	F002	10-24 Keps Nut		8
3	7661-1	Snow Cab Fabric W/Rr Flap	1	F026	10-24 x 1/2 PPHMS		2
4	7662	Door, Cab	1	F052	5/16 External Star Lock Washer		2
5	5519-6	Adapter Harness	1	F085	3/16 Rivet Backup Washer		1
6	7666	Hitch Pin (#3)	4	F128	10-24 x 3/8 PTH Bolt		5
7	7669-8	Front Cab Mount, RH	1	F129	10-24 x 1/2 PTH Bolt		1
8	7664-2	Right Side, Cab	1	F316	5/16-18 x 1-3/4 Hex Bolt		2
9	5670-1	Wire Assembly, 9 Ft., Cab	1	F551	5/16-18 Flange Top Lock Nut		2
10	7669-1	Front Support	1	The following items are not illustrated			
11	7669-2	Top Support	1	5975-1	Cable Tie (18# x 3-3/4")		10
12	7669-3	Cross Tube	2	5975-3	Cable Tie (50# x 7")		8
13	5519-5	Actuator Motor, 12V Snowcab Only (Incl. 18 & 19)	1	5975-7	Cable Tie (50# x 11")		2
14	5995	Toggle Switch (Off-On)	1	* Service Part Only			
15	5667-1	Switch Mount Bracket	1	** Grommet use is optional for routing wire harness through body.			
16	5995-2	Switch Boot	1				
17	7664-20	Left Side, Cab	1				
18	5519-3	Motor Mount Nut (5/8-24 Panel Nut)	*				
19	5519-2	Motor Mount Washer	*				
20	5668-1	Wiper Arm	1				
21	5669-1	Wiper Blade	1				
22	5674	Windshield and Frame (Incl. 23, 24, 25)	1				
23	7665	Glass Windshield	*				
24	7663	Windshield Frame	*				
25	7665-1	Glass Windshield Seal	*				
26	7669-9	Front Cab Mount, LH	1				
27	7989-5	Light Assembly (LED)	2				
28	5996-4	16-14 GA Bullet Connector, Male	2				
29	5977-1	Grommet (1/8 x 3/8)	2				
45	5996-13	16-14 GA Ring Term. (#10) Insulated	2				
46	7989-8	Light Bracket	2				

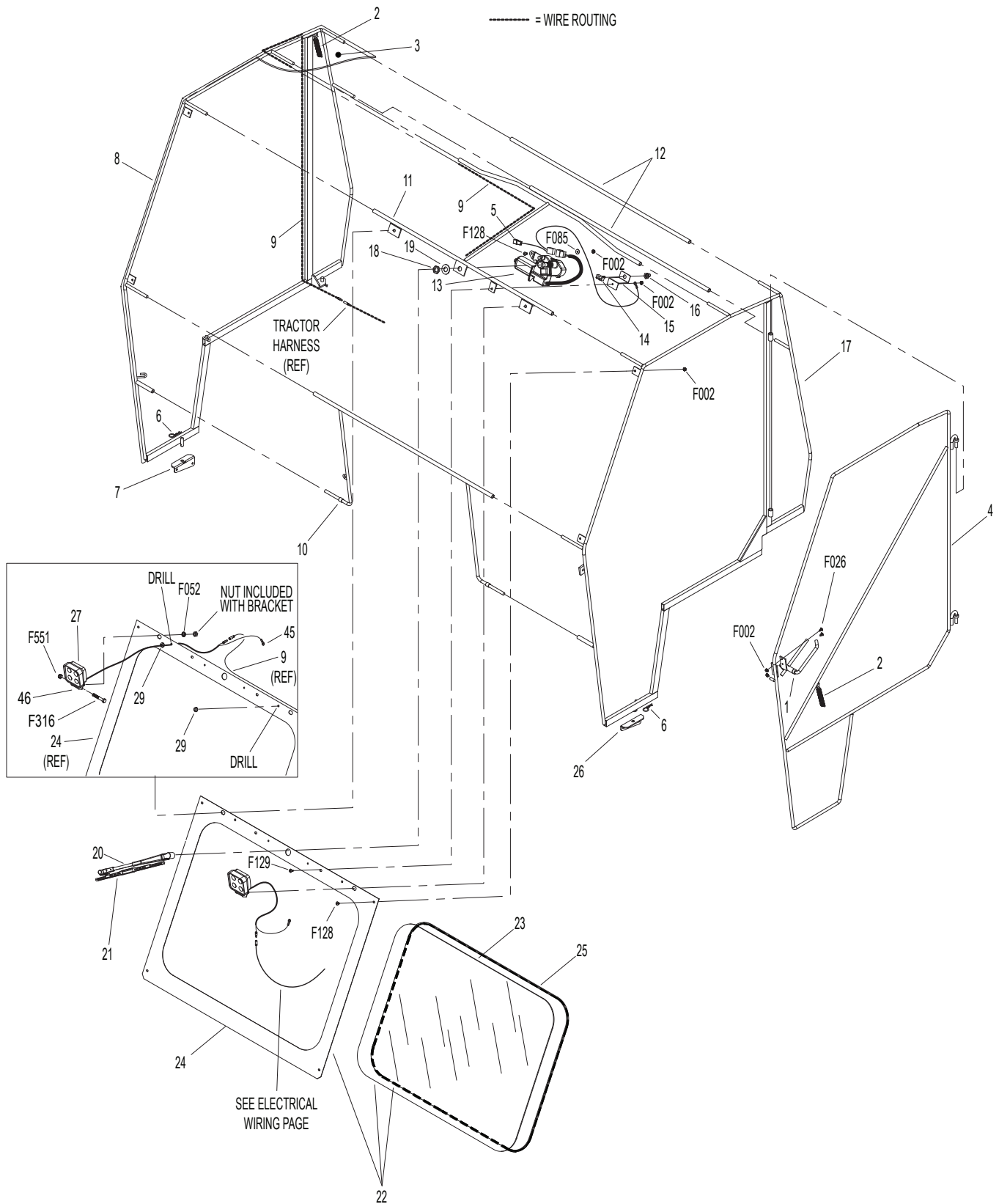
Use only genuine **Walker®** parts.

OPERATOR SOFT CAB MOUNT KITS PARTS LISTS

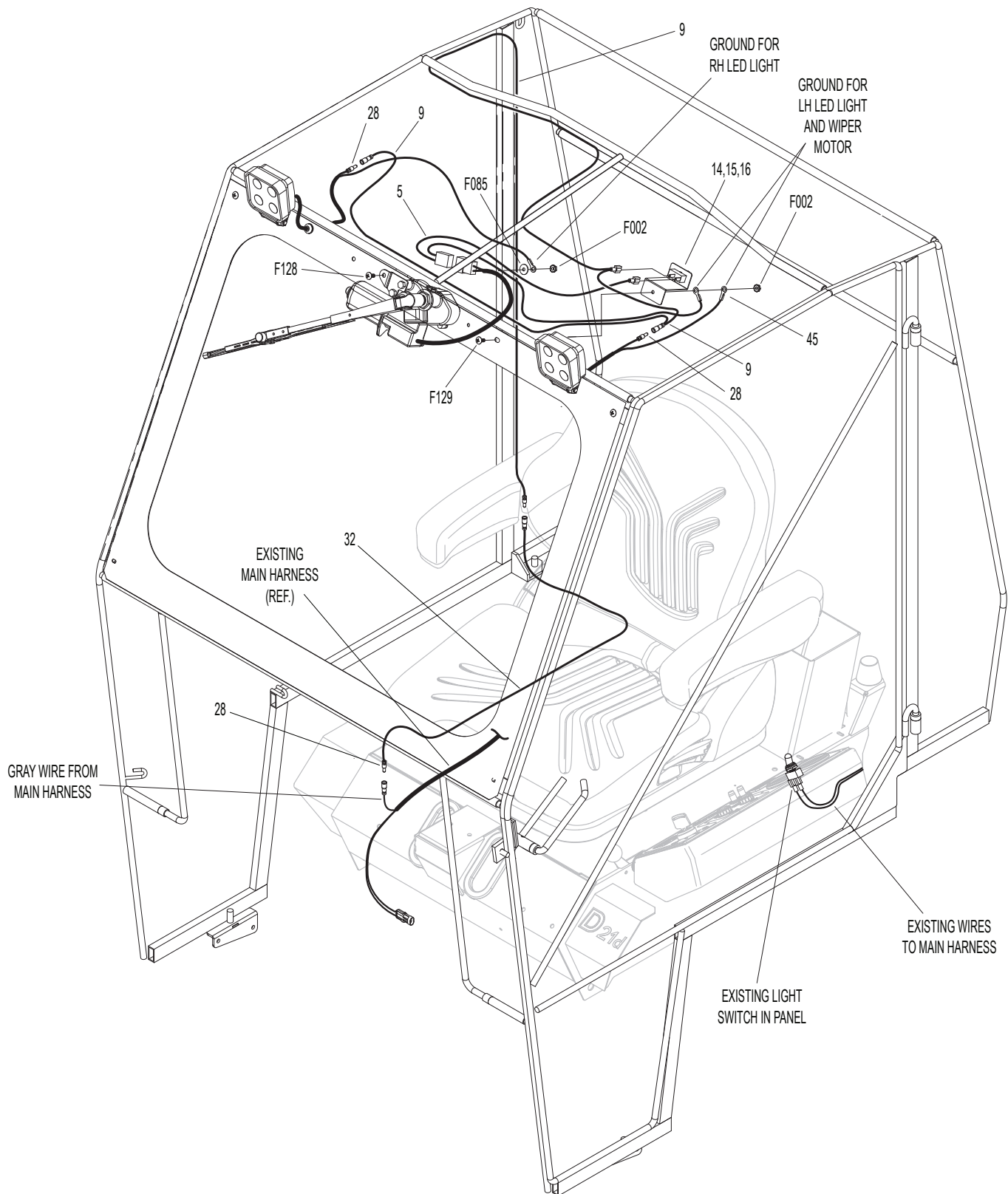
ITEM NO.	PART NO.	DESCRIPTION	NO. REQ'D	ITEM NO.	PART NO.	DESCRIPTION	NO. REQ'D
7660-23 Operator's Cab Mount Kit, MT & MD				7660-25 Operator's Cab Mount Kit, MC			
28	5996-4	16-14 GA Bullet Connector, Male	1	14	5995	Toggle Switch (Off-On)	1
30	7668-1	Side Mount, LH	1	16	5995-2	Switch Boot	1
31	7668-6	Side Mount, RH	1	28	5996-4	16-14 GA Bullet Connector, Male	1
32	5670-3	Wire Assembly (36")	1	32	5670-3	Wire Assembly (36")	1
Fasteners				35	5877	Decal, Lights	1
	F004	1/4-20 Keps Nut	4	40	7669-7	Side Mount, RH	1
	F009	5/16-18 Whiz Lock Nut	4	41	7669-11	Side Mount, LH	1
	F029	1/4-20 x 1/2 Hex Bolt	4	42	5670-6	Wire Assembly (9")	1
	F034	5/16-18 x 3/4 Hex Bolt	4	43	8553	Splice Tap (18-14 GA)	1
The following items are not illustrated				Fasteners			
	5667	Grommet (1/8IDx1/4OD)	1**		F004	1/4-20 Keps Nut	4
7660-24 Operator's Cab Mount Kit, MB					F009	5/16-18 Whiz Lock Nut	4
14	5995	Toggle Switch (Off-On)	1		F026	10-24 x 1/2 PPHMS	1
16	5995-2	Switch Boot	1		F029	1/4-20 x 1/2 Hex Bolt	4
33	7668-8	Side Mount, RH	1		F091	5/16-18 x 5/8 Hex Bolt	1
34	7668-9	Side Mount, LH	1		F093	5/16-18 x 1 Hex Bolt	1
35	5877	Decal, Lights	1		F255	5/16-18 x 1-1/2 Hex Bolt	2
36	7834-2	Wire Saddle (2 Wires)	2	The following items are not illustrated			
37	5975-1	Cable Tie (18# x 3-3/4")	7		5975-1	Cable Tie (18# x 3-3/4")	10
38	5670-7	Wire Assembly (60")	1		5667	Grommet (1/8IDx1/4OD)	1**
Fasteners				*	Service Part Only		
	F009	5/16-18 Whiz Lock Nut	4	**	Grommet use is optional for routing wire harness through body.		
	F034	5/16-18 x 3/4 Hex Bolt	4				

Use only genuine **Walker®** parts.

A17 OPERATOR SOFT CAB ASSEMBLY DIAGRAM

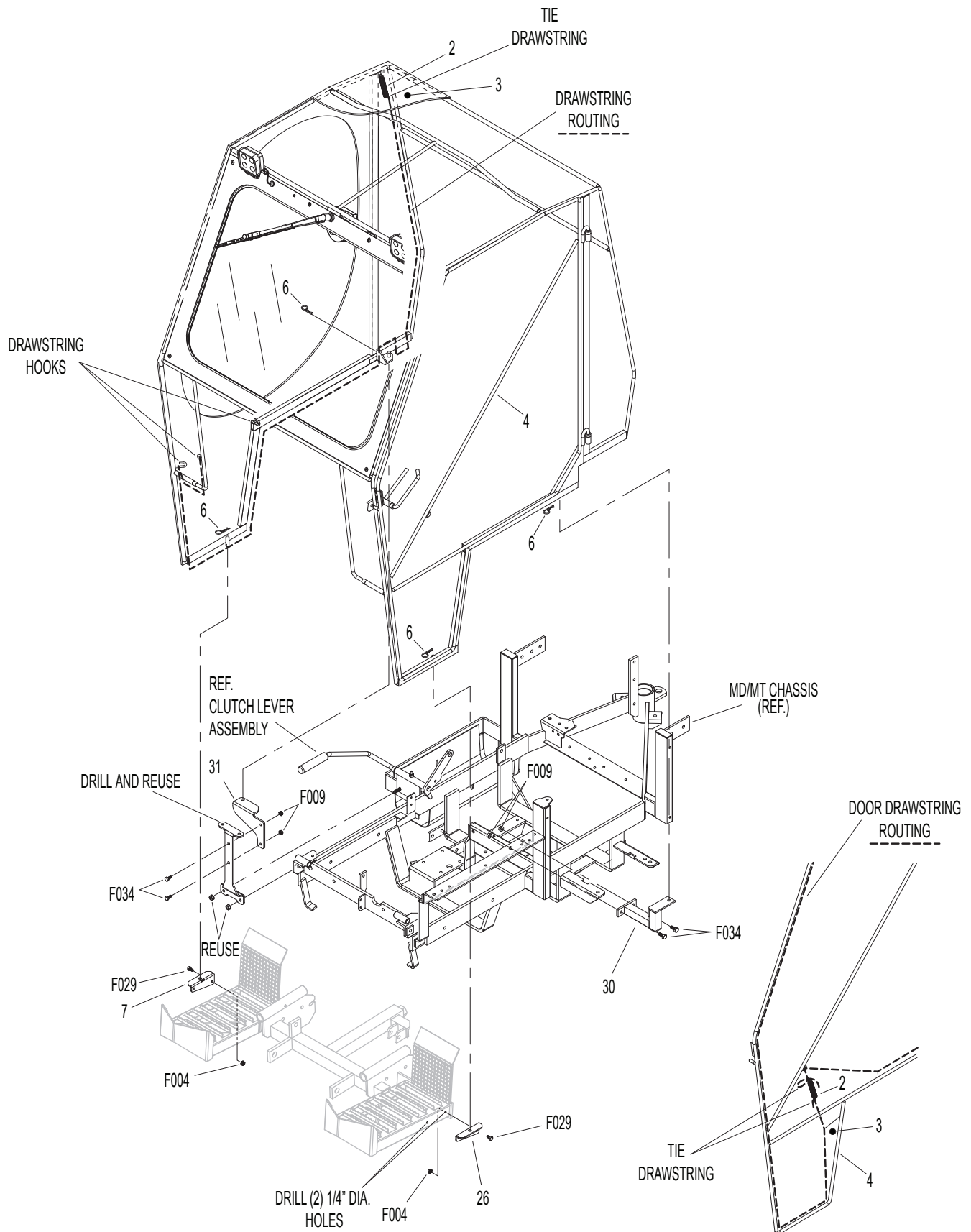


OPERATOR CAB ELECTRICAL DIAGRAM (MT/MD)



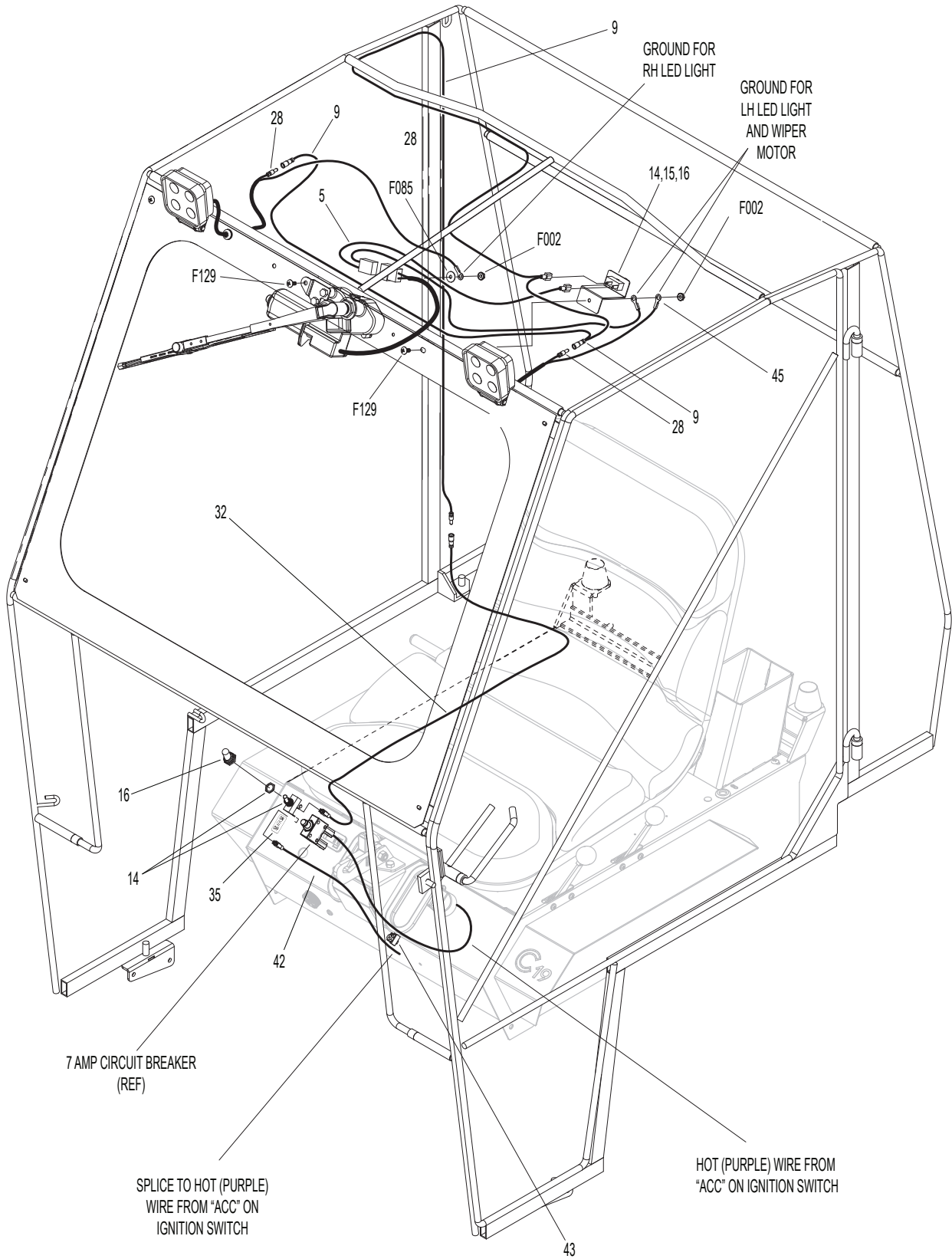
Use only genuine **Walker®** parts.

OPERATOR CAB FABRIC AND MOUNTS DIAGRAM (MT/MD)



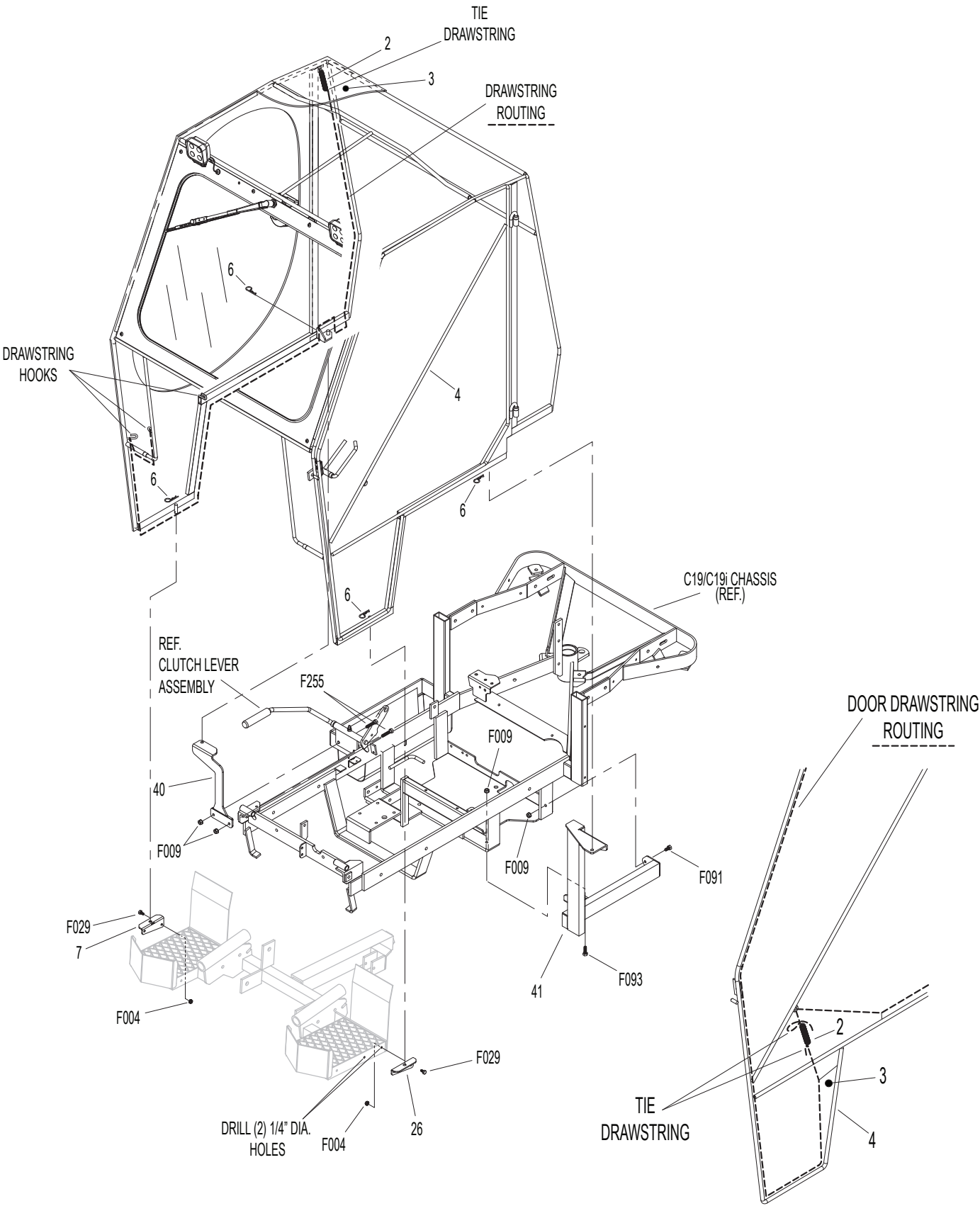
Use only genuine **Walker®** parts.

OPERATOR CAB ELECTRICAL DIAGRAM (MC)



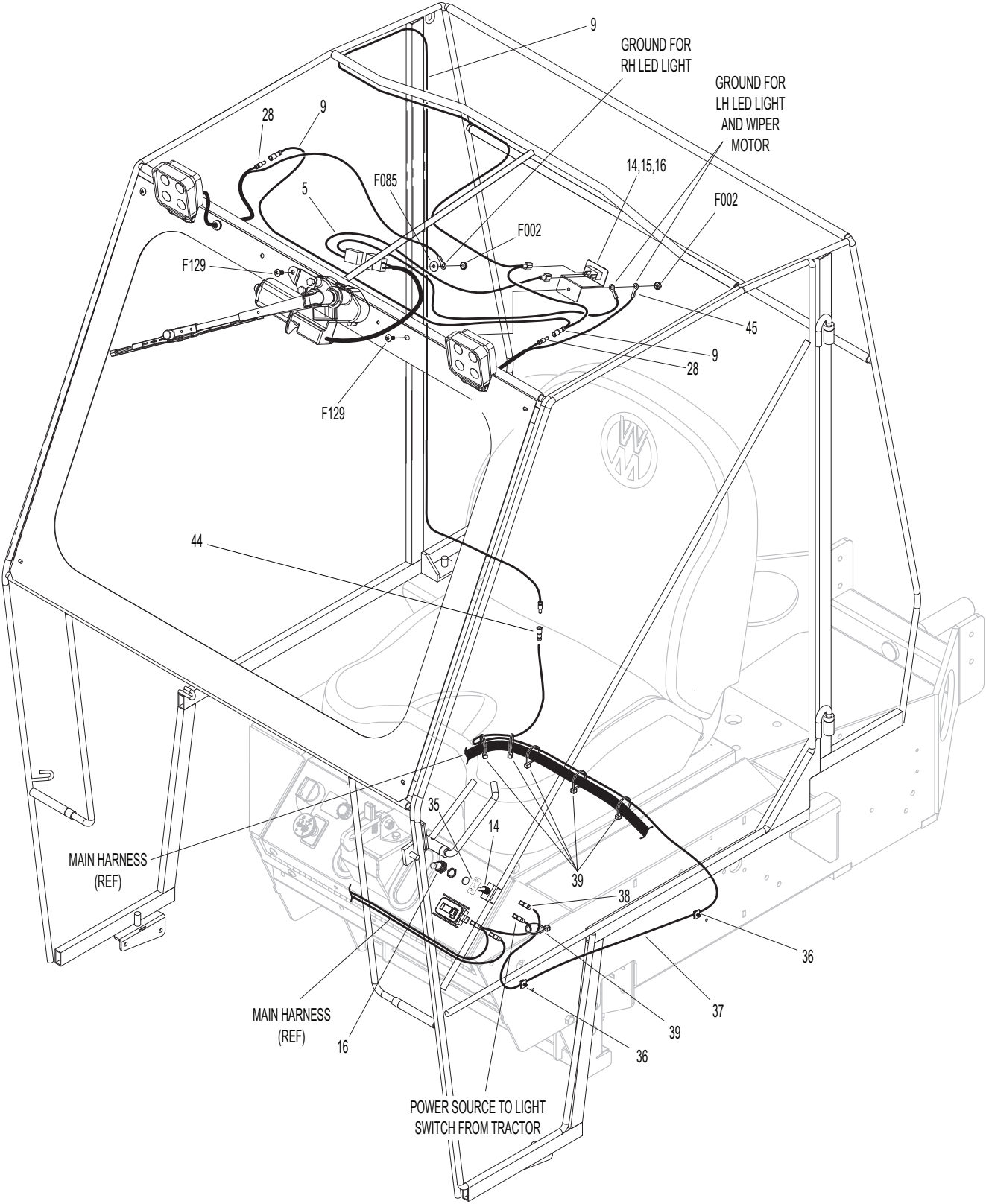
Use only genuine **Walker®** parts.

OPERATOR CAB FABRIC AND MOUNTS DIAGRAM (MC)



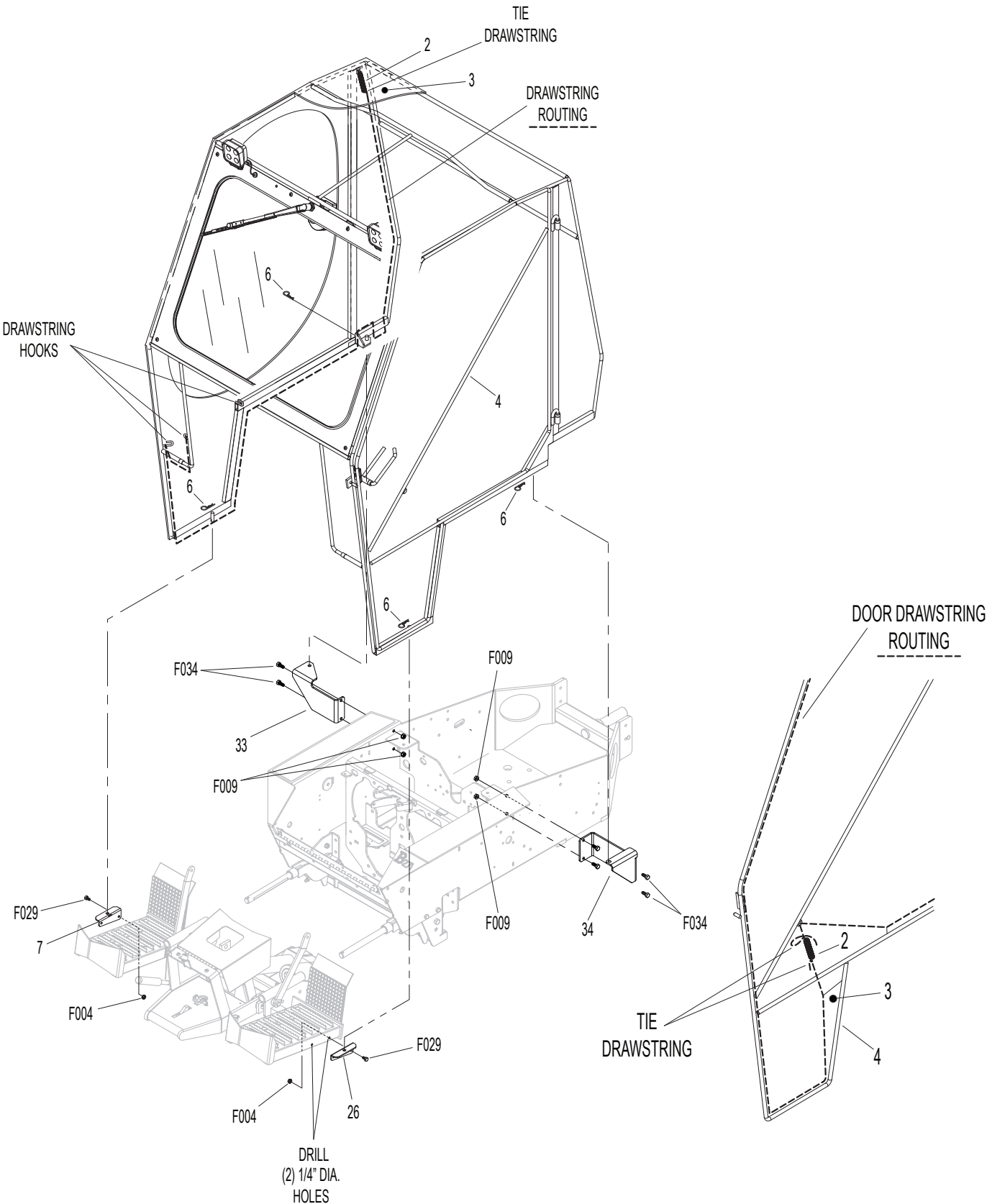
Use only genuine **Walker®** parts.

OPERATOR CAB ELECTRICAL DIAGRAM (MB)



Use only genuine **Walker®** parts.

OPERATOR CAB FABRIC AND MOUNTS DIAGRAM (MB)



Use only genuine **Walker®** parts.

MAINTENANCE AND SERVICE RECORD SHEET

[illegible]

LIMITED WARRANTY FOR WALKER OPERATOR SOFT CAB A17

1. What this warranty covers, and for how long:

Walker Manufacturing company will, at its option, repair or replace, without charge, any part covered by this warranty which is found to be defective in material and/or workmanship within one (1) year after date of sale to the original retail purchaser unless the product is used for rental purposes, in which case this warranty is limited to ninety (90) days. At Walker's request, customer will make the defective part available for inspection by Walker and/or return the defective part to Walker, transportation charges prepaid. All parts and components of the Walker operator soft cab are covered by this warranty.

2. What this warranty does not cover:

- A. This warranty does not cover defects caused by depreciation or damage caused by normal wear, accidents, improper maintenance, improper use or abuse of the product, alterations, or failure to follow the instructions contained in the Operator's Manual for operation and maintenance.
- B. The customer shall pay any charges for making service calls and/or for transporting the attachment to and from the place where the inspection and/or warranty work is performed.

3. How to obtain service under this warranty:

Warranty service can be arranged by contacting the dealer where you purchased the machine or by contacting Walker Manufacturing Company, 5925 East Harmony Road, Ft. Collins, CO 80528. Proof of the date of purchase may be required to verify warranty coverage.

4. Warranty limitation:

- A. **HERE IS NO OTHER EXPRESS WARRANTY. ANY WARRANTY THAT MAY BE IMPLIED FROM THIS PURCHASE INCLUDING MERCHANTABILITY AND FITNESS FOR A PARTICULAR PURPOSE IS HEREBY LIMITED TO THE DURATION OF THIS WARRANTY AND TO THE EXTENT PERMITTED BY LAW ANY AND ALL IMPLIED WARRANTIES ARE EXCLUDED.** Some states do not allow limitations on how long an implied warranty lasts, so the above limitations may not apply to you.
- B. **WALKER WILL NOT BE LIABLE FOR ANY INCIDENTAL, CONSEQUENTIAL, OR SPECIAL DAMAGES AND/OR EXPENSES IN CONNECTION WITH THE PURCHASE OR USE OF THE MACHINE.** Some states do not allow the exclusion or limitation of incidental or consequential damages, so the above limitation(s) or exclusion(s) may not apply to you.
- C. Only the warranty expressed in this limited warranty shall apply and no dealer, distributor, or individual is authorized to amend, modify, or extend this warranty in any way. Accordingly, additional statements such as dealer advertising or presentations, whether oral or written, do not constitute warranties by Walker, and should not be relied upon.
- D. This warranty gives you specific legal rights, and you may also have other rights which vary from state to state.



WALKER

WALKER MFG. CO. • 5925 E. HARMONY ROAD, FORT COLLINS, CO 80528 • (970) 221-5614
FORM NO. 041322 PRINTED IN USA www.walker.com ©2022 WALKER MFG. CO