



WALKER

H11 48 in Dozer Blade

H16 60 in Dozer Blade

Operator's Manual

Assembly, Attaching, Removing, Operation and Maintenance

H11 compatible with Models C, D, H, T

H16 compatible with Models D, H, T



Please Read and Save These Instructions

For Safety, Read All Assembly and Operation Instructions
Prior to Operating Attachment

Beginning S/N: 14-0201
Effective Date: 09/17/14
P/N: 6625-12



Foreword

Thank you. . .for purchasing a Walker Dozer Blade Attachment. Every effort has been made to provide you with the most reliable machine on the market, and we are sure you will be among our many satisfied customers. If for any reason this product does not perform to your expectations, please contact your local dealer. Every customer is important to us. Your satisfaction is our goal.

Please. . .read this manual thoroughly! Before you operate your machine, please read this entire manual. Some of the information is crucial for proper operation - it will help protect your investment and ensure that the machine performs to your satisfaction. Some of the information is important to your safety, and must be read and understood to help prevent possible injury to the operator or others. If anything in this manual is confusing or hard to understand, please contact your local authorized dealer or call our service department, at (970) 221-5614, for clarification before operating or servicing this machine.

All shields and guards must be in place for the proper and safe operation of this machine. Where they are shown removed in this manual, it is for illustration purposes only. **Do not operate this machine unless all shields and guards are in place.**

Walker Mfg. Co. is continually striving to improve the design and performance of its products. We reserve the right to make changes in specifications and design without thereby incurring any obligation relative to previously manufactured products.

Sincerely,
WALKER MANUFACTURING COMPANY

Bob Walker, President

Table of Contents:

Assembly _____	1
Attaching Blade to Tractor _____	4
Removing Blade from Tractor _____	7
Operation _____	8
Maintenance _____	11
Parts List/Diagram _____	13
Warranty _____	20

HIGHLIGHTED INFORMATION

Walker Manufacturing recommends that any service requiring special training or tools be performed by an authorized Walker Mower Dealer. There are several general practices to be aware of in the area of safety. Most accidents associated with the operation or maintenance of a Walker product are caused by disregarding basic safety precautions or specific warnings. Such accidents, in most cases, can be prevented by being aware of the dangers present. Information of special importance has been highlighted in bold type.

H11 48" Dozer Blade:

- The following are required for mounting the H11 48" Dozer Blade:
 - C, T, D tractors: H10 Implement Mount Hitch
 - H tractors: H19 Implement Mount Hitch
- The following option is available for the H11 48" Dozer Blade:
 - Dozer Blade Polyurethane Cutting Edge Kit 48" (6625-10)

H16 60" Dozer Blade:

- The following are required for mounting the H16 60" Dozer Blade:
 - T, D tractors: H10 Implement Mount Hitch
 - H tractors: H19 Implement Mount Hitch
- The following option is available for the H16 60" Dozer Blade:
 - Dozer Blade Polyurethane Cutting Edge Kit 60" (6625-11)

Dozer Blade Assembly

Parts Included in Bag:

Name:	Quantity:
5/16-18 ESNA Nut _____	1
3/16 x 1-1/8 Roll Pin _____	1
5/16 x 7/8 x .125 Washer _____	1
Extension Spring _____	1
5/16-18 x 2 Eye Bolt _____	1



Recommended tools:

- Ball peen hammer
- Tapered punch
- Wrench/Socket wrench
- Pliers

Dozer Blade Assembly

1. Remove blade mount, hitch adapter and dozer blade from boxes; lay blade mount on flat surface; set hitch adapter aside. Ensure all parts are included in the parts bag.
2. Remove the pivot shaft from the back of dozer blade and align the pivot shaft sockets on the blade mount and dozer blade.
3. Begin feeding the pivot shaft through by hand from left to right through the pivot shaft sockets. Then, using a hammer and punch, tap the pivot shaft through the pivot shaft sockets making sure to align the roll pin holes on the left hand side. The pivot shaft should have a snug fit in the sockets with no play or looseness.

NOTE: If needed, tap the pivot shaft back through the left pivot shaft socket approximately one inch and, using pliers rotate the pivot shaft to more closely align the roll pin holes. Tap pivot shaft back in place, and using a tapered punch inserted into roll pin holes, maneuver pivot shaft into alignment.

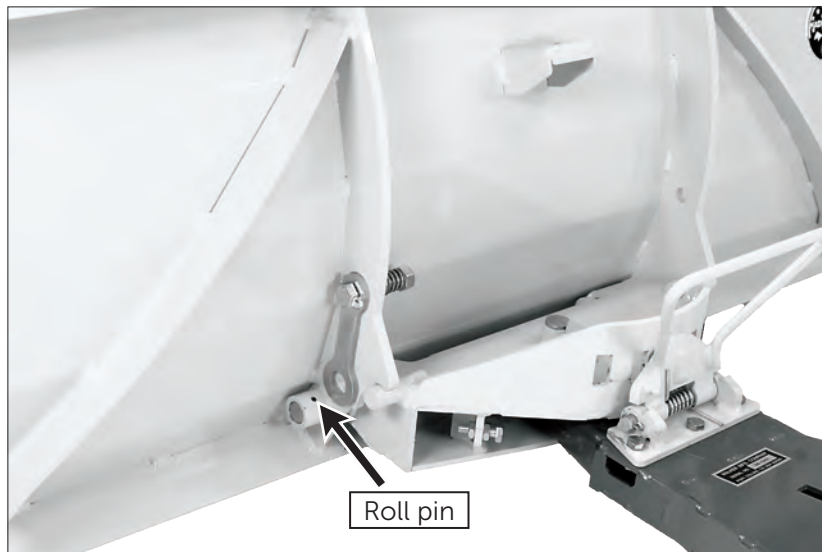


Figure 1.1

4. After ensuring proper alignment of the roll pin guides, use a hammer to tap roll pin into place as shown in figure 1.1.

5. Loop the extension spring through the spring mount tab in the center of the blade mount. Loop the eye bolt over the other end of the extension spring, and pull up on the extension spring so the threads of the eye bolt protrude through the eye bolt bracket as shown in figure 2.1.

NOTE: Stretching the spring to fit through the bracket may require two hands and an assistant may be needed to install the ESNA nut.

Place washer over the eye bolt and begin threading the ESNA nut onto eye bolt enough to hold eye bolt in place. Hold the eye bolt with pliers, and finish tightening the ESNA nut as shown in figure 2.2.



Figure 2.1



Figure 2.2



Figure 2.3

NOTE: Eye bolt threads need to protrude through the ESNA nut by at least 2 threads as in figure 2.3. See Dozer Blade Operation section for additional notes on the extension spring.

Attaching Dozer Blade to Tractor

NOTE: Depending on the tractor, either the H10 or H19 Implement Mount Hitch will need to be installed on the tractor prior to attaching the dozer blade. See page ii to determine the correct implement mount hitch.

1. **Method 1:** When attaching the dozer blade to the implement hitch, slide hitch adapter onto implement hitch.

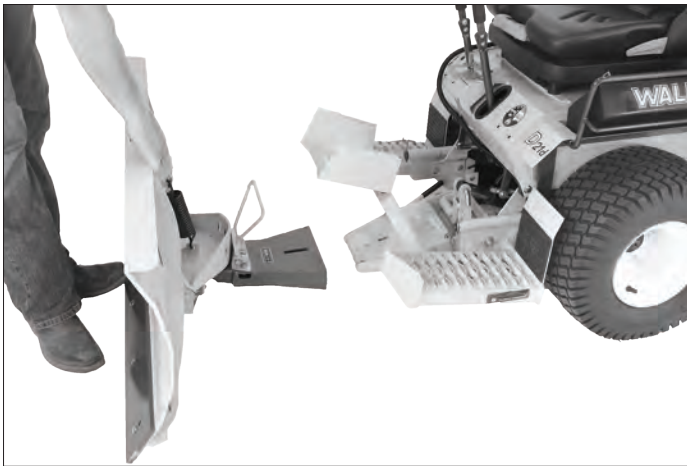


Figure 3.1



Figure 3.2

Method 2: Lower the hitch adapter tongue until it is just above the ground, and slowly drive forward until the tongue is fully engaged in the dozer blade receiver.

2. Once the hitch adapter tongue is fully engaged into the receiver, lock the dozer blade in place.

H10 Instructions

- On the **H10** implement hitch, pull hitch lock lever fully forward and down to the **LOCKED** position (figure 3.3), and secure the quick hitch latch with the linch pin (figure 3.4). Close PTO shield.



Figure 3.3 Hitch Lock Lever in "Locked" Position



Figure 3.4

H19 Instructions

- On the **H19** implement hitch, pull hitch lock lever fully to the rear and down to the **LOCKED** position (figure 3.5).
- Adjust the **H19** hitch lock clevis to properly secure the implement. To adjust the tension on the tongue latch, remove the bowtie clip from the clevis pin as shown in figure 3.6, and twist the male clevis clockwise to tighten, or counter-clockwise to loosen, as needed.

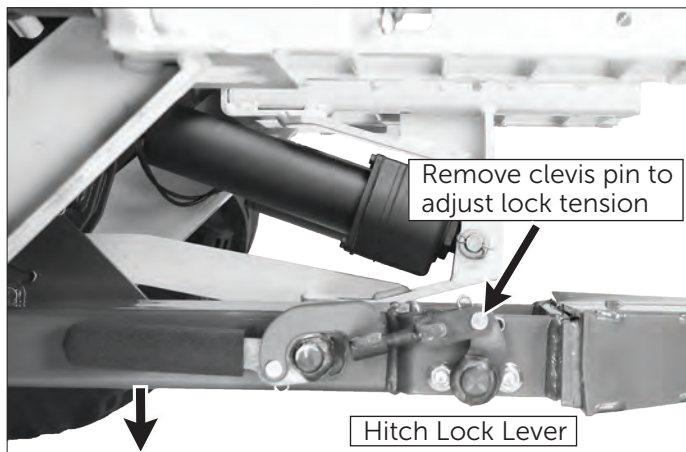


Figure 3.5 Hitch Lock Lever in "Locked" Position

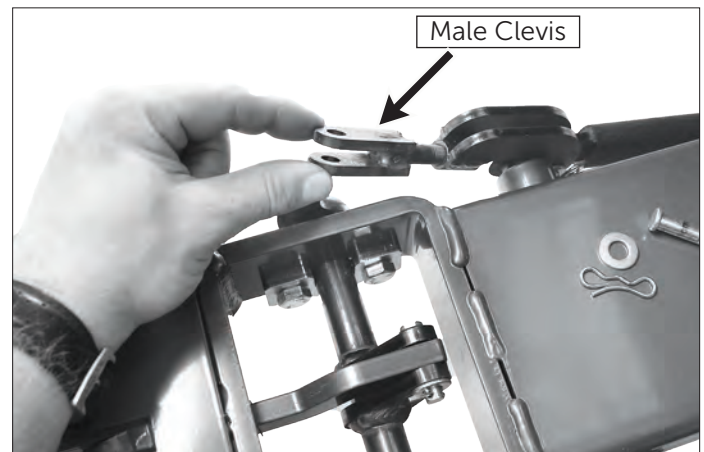


Figure 3.6 Adjusting Lock Tension to Secure Implement

- The hitch lock lever should travel approximately 2" at grip end after implement hitch adapter is fully seated on implement hitch tongue as shown in figure 3.7.
- **Repeat adjustment procedure after first 15 minutes of operation** after installing implement to check for secure mounting (to make sure implement "socket" is fully seated on "tongue" of the hitch).

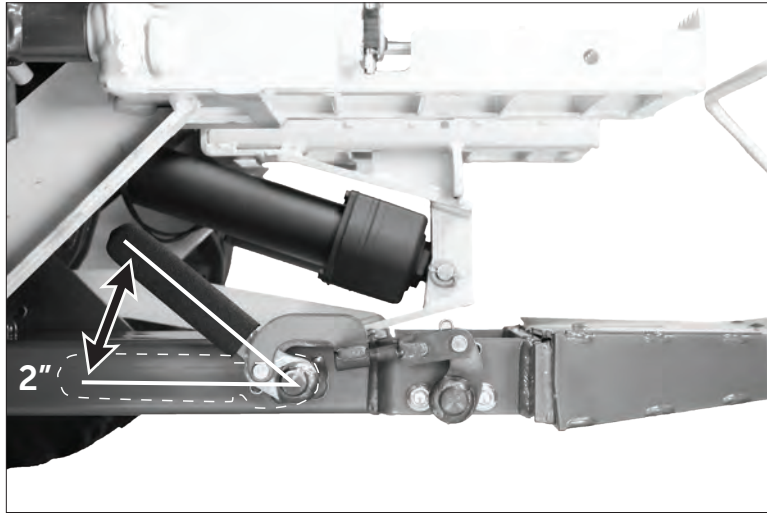


Figure 3.7

3. Check adjustment of angle stop bolts with blade in the fully angled position in both directions (figure 4.1). Confirm foot trigger locking tang engages freely in the angle adjust slot while the stop bolt is contacting the side of the hitch adapter frame (figure 4.2). Adjust as necessary.

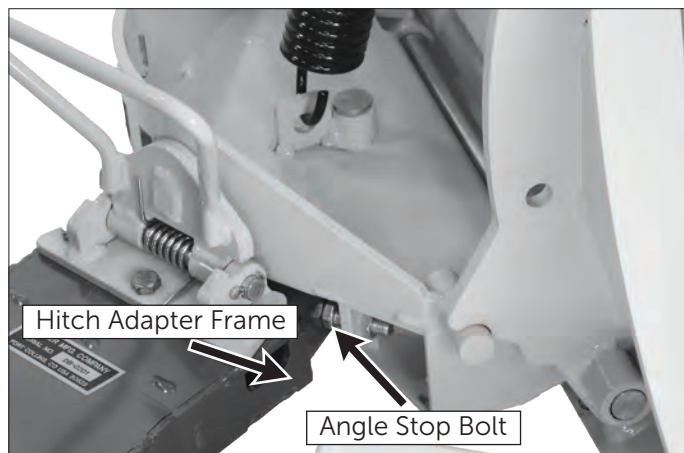


Figure 4.1

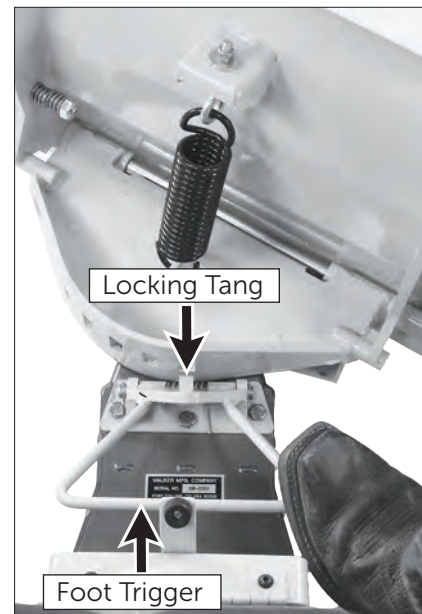


Figure 4.2

Removing Dozer Blade from Tractor

H10 Instructions

1. Lower dozer blade until just touching the ground.
2. Shut off machine and set parking brake.
3. Open PTO shield and remove linch pin from the quick hitch latch.
4. Pull hitch lock lever fully to rear to "UNLOCKED" position.
5. Slide dozer blade off implement hitch, or reverse the tractor out of the attachment.

H19 Instructions

1. Lower dozer blade until just touching the ground.
2. Shut off machine and set parking brake.
3. On the H19 implement hitch, pull the hitch lock lever fully forward to "UNLOCKED" position.
4. Slide dozer blade off implement hitch, or reverse the tractor out of the attachment.

Dozer Blade Operation

Warning ⚠

Before operating an implement, become familiar with the location and function of all operator controls. Knowing the location, function, and operation of these controls is important for safe and efficient operation.

Lift/Lower blade: The dozer blade may be raised or lowered by operating a toggle switch located on the Forward Speed Control (FSC) lever.

- Move the switch backward to lift the blade.
- Move the switch forward to lower the blade.

Blade Angle Position

- There are five positions to which the blade can be adjusted:
 - Straight forward
 - Right/Left 15 degrees
 - Right/Left 30 degrees

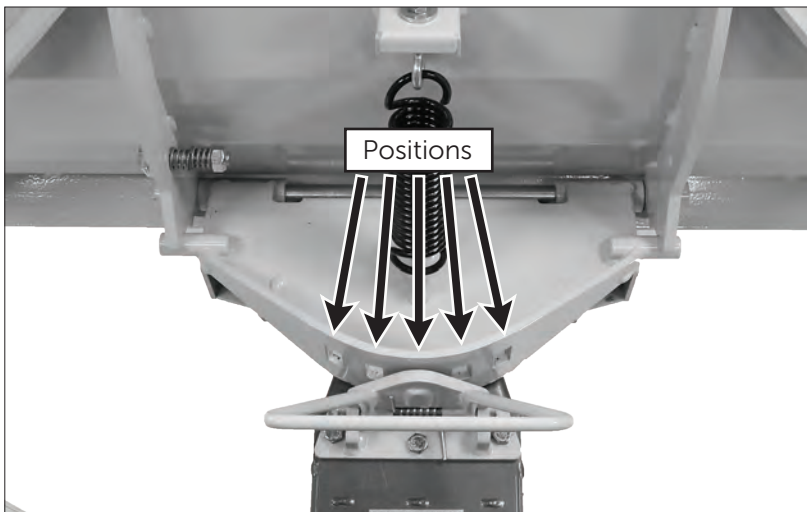


Figure 5.1

Adjusting Blade Angle

- While off the ground:
 - **Method 1:** Use one foot to hold down the foot trigger (figure 5.2) while using your other foot to push the blade into the desired position (figure 5.3). Release the foot trigger to allow locking tang to engage into place.



Figure 5.2



Figure 5.3

- **Method 2:** To swing the blade into position, hold down the foot trigger (figure 5.4) while turning the tractor using the momentum of the blade to swing the blade into the desired position and release foot trigger to allow locking tang to engage into place.
- While on the ground:
 - Hold down the foot trigger (figure 5.4) and turn the machine. While turning right, dozer blade will pivot left; while turning left, dozer blade will pivot right. Release the foot trigger to allow locking tang to engage into place.



Figure 5.4

Extension Spring / Trip Spring

The dozer blade is designed to “trip” forward when striking large rocks, tree stumps, etc. Once the blade clears the obstacle, the blade will spring back to normal operating position, eliminating shock to the operator and tractor.

- Adjust the extension spring tension by holding the eye bolt with pliers and tightening the ESNA nut (figure 5.5) to the amount of tension required for safe operation (a minimum of 2 threads should protrude through ESNA nut).



Figure 5.5

Trip Lock

Rigid use: When the operator can be absolutely certain there are no rigid obstructions on the surface (e.g. broken sidewalks, tree roots, stakes, etc.) while using the dozer blade, and the forward trip action of the blade is **NOT** required, move the trip lock over the stop rod.

- To engage the trip lock, compress the spring and rotate the trip lock over the stop rod (figure 6.1). Release pressure on the spring, and place lock over stop rod (figure 6.2). Be sure the trip lock seats flush on the stop rod. This procedure “locks” the blade in place and will prevent the forward trip action.

Caution ⚠

Using the trip lock is **NOT** recommended when obstructions can not be seen (e.g. under snow cover).

Rigid blade operation should only be used with **low ground speed**.



Figure 6.1

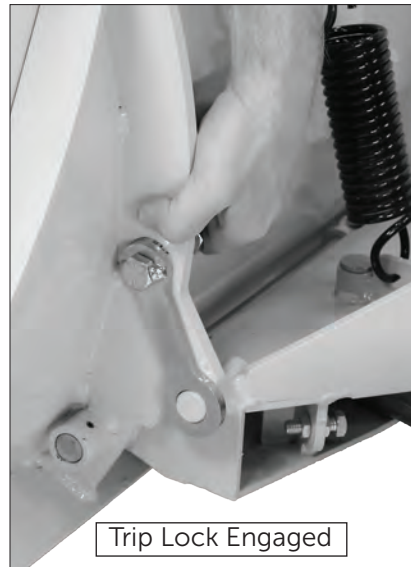


Figure 6.2

Maintenance

For maintenance instructions for your tractor, please see the owner's manual for your model. If you do not have an owner's manual, you can download one at www.walkermowers.com. Select your model, then click on "Downloads".

Lubricate the following oil points every 25 hours of operation with SAE 10 oil:

- Blade angle pivot (figure 7.1)
- Foot trigger pivot (figure 7.2)

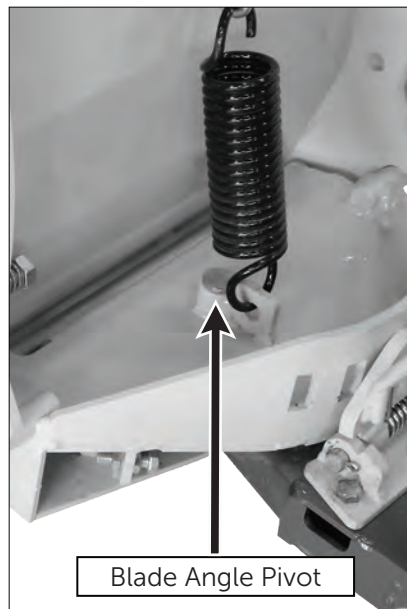


Figure 7.1

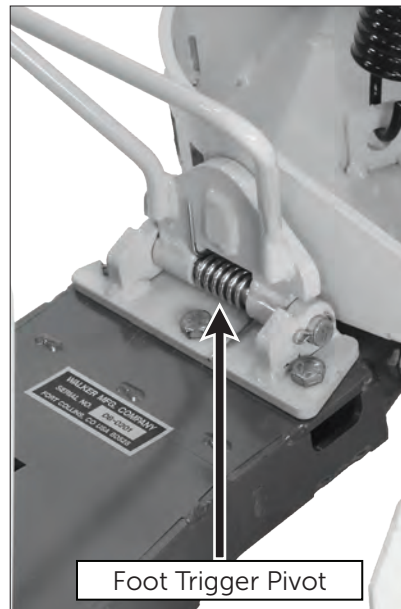


Figure 7.2

Check/Adjust hitch lock tension every 8 hours of operation, or as needed. See page 5 for details.

Maintenance

Inspect wear strip often (approximately every 2 hours of operation). Upon reaching the maximum allowable wear (approximately 1/8" remaining as shown in figure 7.3) either lower wear strip to second row of carriage bolt holes, flip the wear strip, or replace the wear strip. **DO NOT** allow the wear strip to become so worn as to cause damage to the dozer blade.

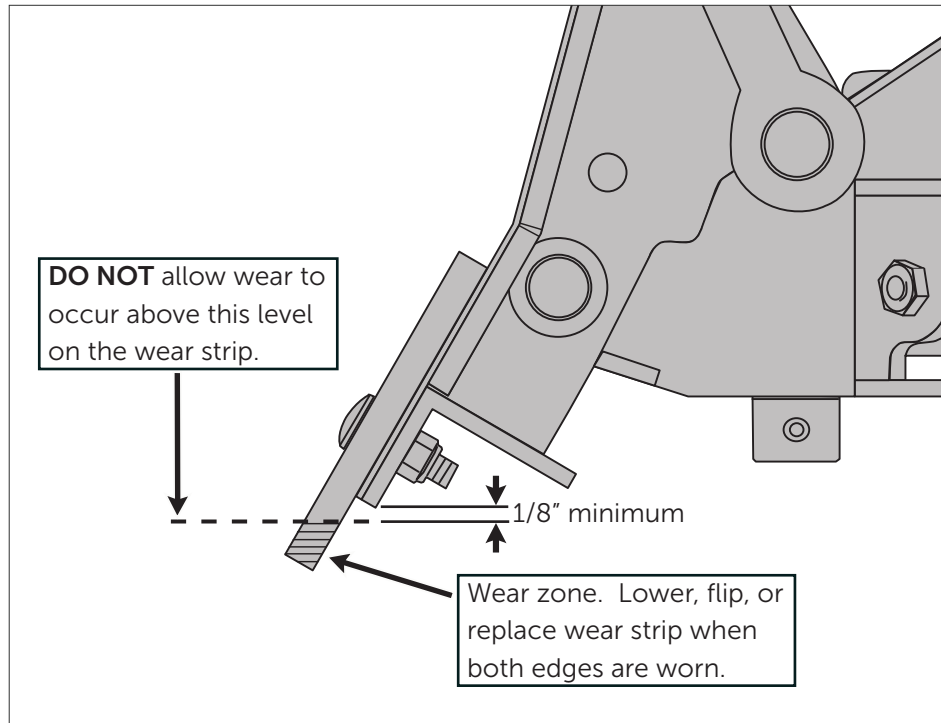
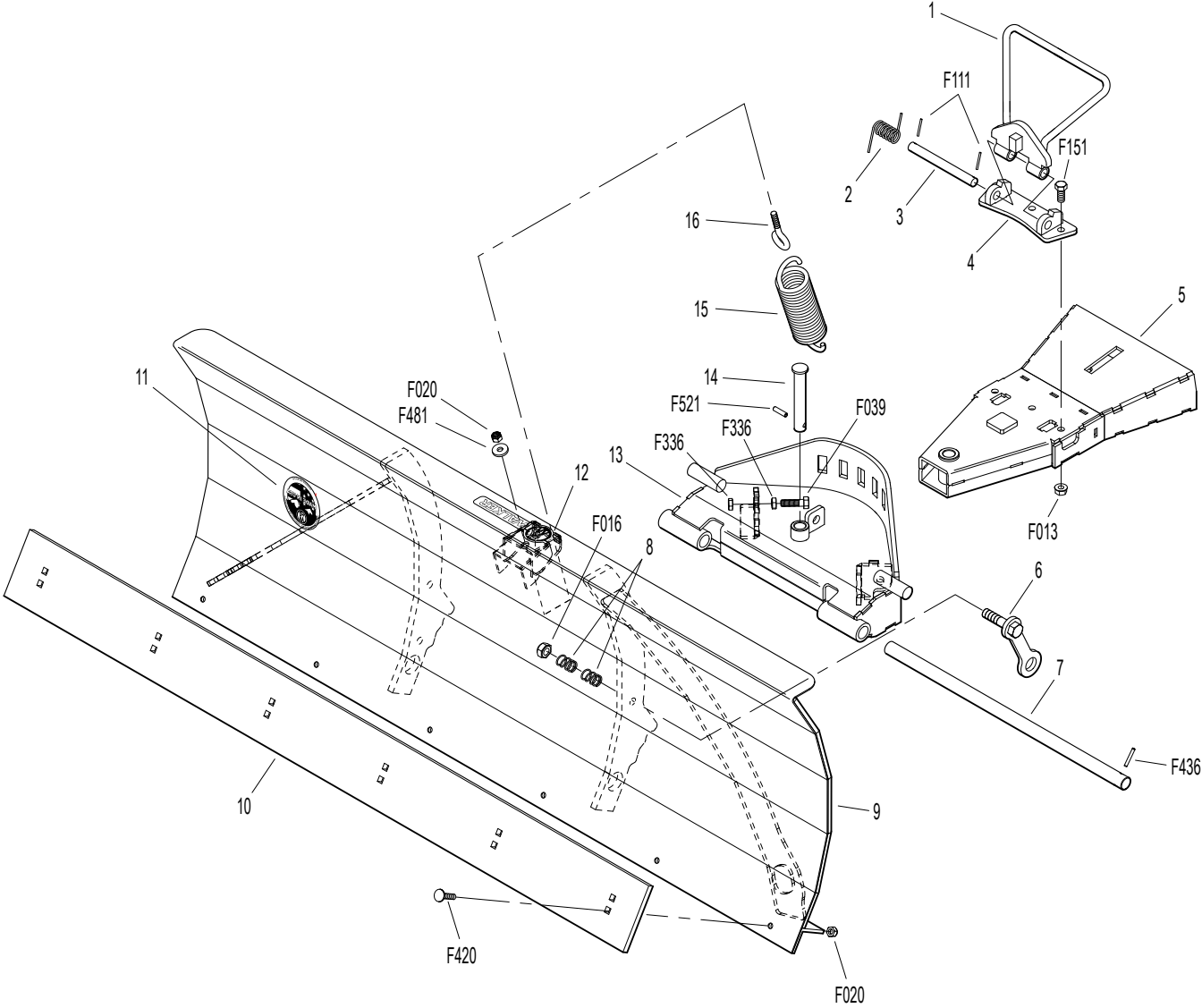


Figure 7.3

48" DOZER BLADE (H11)

ITEM NO.	PART NO.	DESCRIPTION	NO. REQ'D	ITEM NO.	PART NO.	DESCRIPTION	NO. REQ'D
Dozer Blade				Fasteners			
1	6624-4	Foot Trigger	1	F013	3/8-16 Whiz Locknut		3
2	6624-12	Torsion Spring	1	F016	1/2-13 Self-Locking Nut		1
3	6624-14	Pivot Shaft (4-7/8)	1	F020	5/16-18 ESNA Nut		7
4	6624-9	Foot Trigger Mount	1	F039	3/8-16 x 1-1/4 Hex Bolt		2
5	6624-23	Hitch Adapter	1	F111	1/8 x 3/4 Cotter Pin		2
6	6624-5	Break Away Lock	1	F151	3/8-16 x 7/8 Hex Bolt		3
7	6624-10	Pivot Shaft (18-3/8)	1	F336	3/8-16 Jam Nut		4
8	8401-2	Safety Lockout Spring	2	F420	5/16-18 x 1-1/4 Carriage Bolt		6
9	6624-20	Dozer Blade (48") (Includes Items # 11 & 12)	1	F436	3/16 x 1-1/8 Spring Pin		1
10	6624-18	Wear Strip/Steel 48-1/2"	1	F481	Washer 5/16 x 7/8 x .125		1
11	5856-1	Decal, Made In USA	1	F521	Roll Pin 1/4 x 1		1
12	5809-2	Decal, Walker	1				
13	6624-3	Blade Mount	1				
14	6624-11	Hitch Pin	1				
15	6624-13	Extension Spring	1				
16	6624-19	Eye Bolt (5/16-18 x 2)	1				

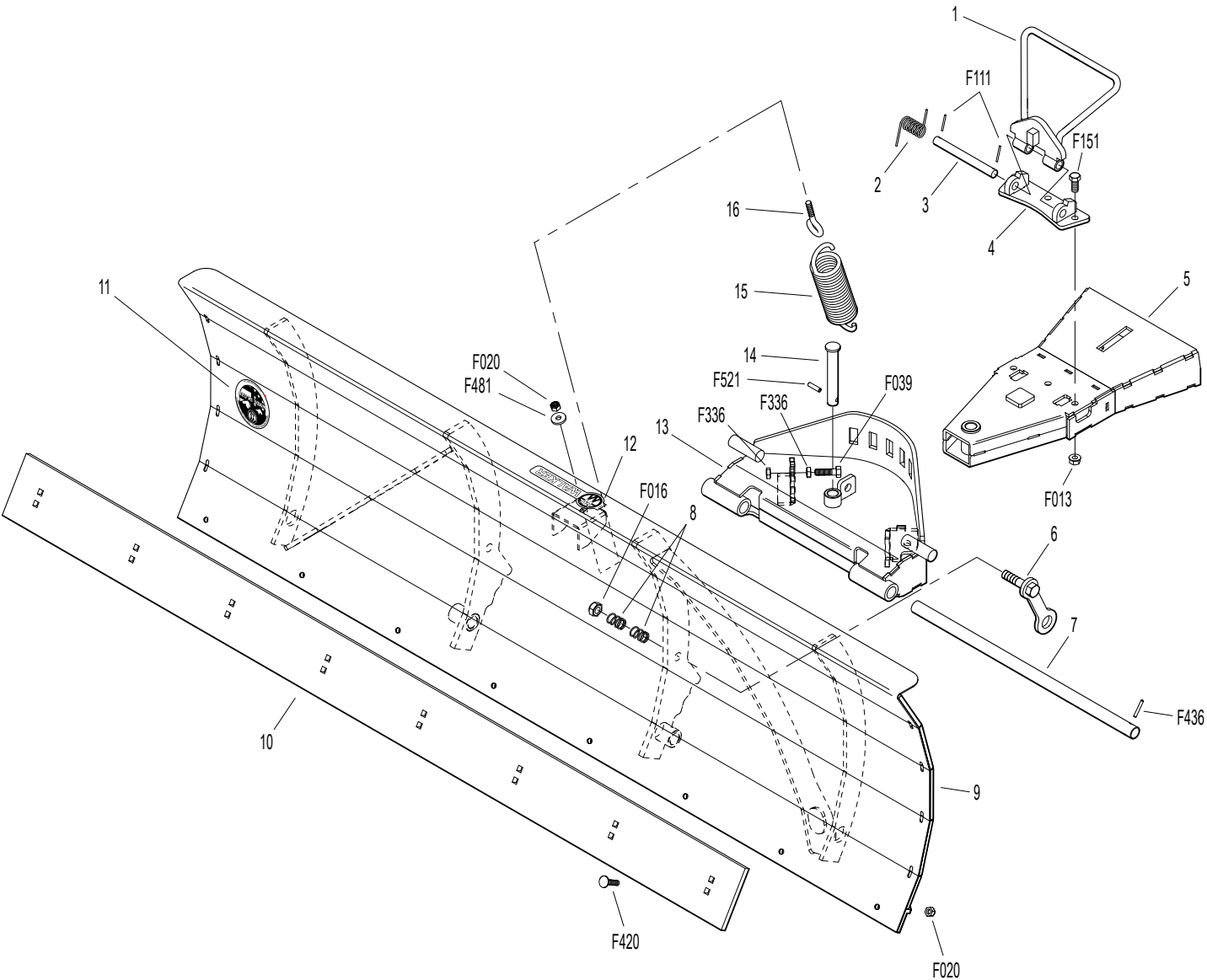
48" DOZER BLADE (H11)



60" DOZER BLADE (H16)

ITEM NO.	PART NO.	DESCRIPTION	NO. REQ'D	ITEM NO.	PART NO.	DESCRIPTION	NO. REQ'D
Dozer Blade				Fasteners			
1	6624-4	Foot Trigger	1	F013	3/8-16 Whiz Locknut		3
2	6624-12	Torsion Spring	1	F016	1/2-13 Self-Locking Nut		1
3	6624-14	Pivot Shaft (4-7/8)	1	F020	5/16-18 ESNA Nut		9
4	6624-9	Foot Trigger Mount	1	F039	3/8-16 x 1-1/4 Hex Bolt		2
5	6624-23	Hitch Adapter	1	F111	1/8 x 3/4 Cotter Pin		2
6	6624-5	Break Away Lock	1	F151	3/8-16 x 7/8 Hex Bolt		3
7	6624-10	Pivot Shaft (18-3/8)	1	F336	3/8-16 Jam Nut		4
8	8401-2	Safety Lockout Spring	2	F420	5/16-18 x 1-1/4 Carriage Bolt		8
9	6624-58	Dozer Blade (60") (Includes Items # 11 & 12)	1	F436	3/16 x 1-1/8 Spring Pin		1
10	6624-46	Wear Strip (60")	1	F481	Washer 5/16 x 7/8 x .125		1
11	5856-1	Decal, Made In USA	1	F521	Roll Pin 1/4 x 1		1
12	5809-2	Decal, Walker	1				
13	6624-3	Blade Mount	1				
14	6624-11	Hitch Pin	1				
15	6624-13	Extension Spring	1				
16	6624-19	Eye Bolt (5/16-18 x 2)	1				

60" DOZER BLADE (H16)



OPERATOR'S NOTES

OPERATOR'S NOTES

OPERATOR'S NOTES

LIMITED WARRANTY FOR WALKER DOZER BLADES

1. What this warranty covers, and for how long:

Walker Manufacturing company will, at its option, repair or replace, without charge, any part covered by this warranty which is found to be defective in material and/or workmanship within one (1) year* after date of sale to the original retail purchaser unless the product is used for rental purposes, in which case this warranty is limited to ninety (90) days. At Walker's request, customer will make the defective part available for inspection by Walker and/or return the defective part to Walker, transportation charges prepaid. All parts and components of the Walker Dozer Blade are covered by this warranty.

2. What this warranty does not cover:

A. This warranty does not cover defects caused by depreciation or damage caused by normal wear, accidents, improper maintenance, improper use or abuse of the product, alterations, or failure to follow the instructions contained in the Operator's Manual for operation and maintenance.

B. The customer shall pay any charges for making service calls and/or for transporting the attachment to and from the place where the inspection and/or warranty work is performed.

3. How to obtain service under this warranty:

Warranty service can be arranged by contacting the dealer where you purchased the machine or by contacting Walker Manufacturing Company, 5925 East Harmony Road, Ft. Collins, CO 80528. Proof of the date of purchase may be required to verify warranty coverage.

4. Warranty limitation:

A. THERE IS NO OTHER EXPRESS WARRANTY. ANY WARRANTY THAT MAY BE IMPLIED FROM THIS PURCHASE INCLUDING MERCHANTABILITY AND FITNESS FOR A PARTICULAR PURPOSE IS HEREBY LIMITED TO THE DURATION OF THIS WARRANTY AND TO THE EXTENT PERMITTED BY LAW ANY AND ALL IMPLIED WARRANTIES ARE EXCLUDED. Some states do not allow limitations on how long an implied warranty lasts, so the above limitations may not apply to you.

B. WALKER WILL NOT BE LIABLE FOR ANY INCIDENTAL, CONSEQUENTIAL, OR SPECIAL DAMAGES AND/OR EXPENSES IN CONNECTION WITH THE PURCHASE OR USE OF THE Machine. Some states do not allow the exclusion or limitation of incidental or consequential damages, so the above limitation(s) or exclusion(s) may not apply to you.

C. Only the warranty expressed in this limited warranty shall apply and no dealer, distributor, or individual is authorized to amend, modify, or extend this warranty in any way. Accordingly, additional statements such as dealer advertising or presentations, whether oral or written, do not constitute warranties by Walker, and should not be relied upon.

D. This warranty gives you specific legal rights, and you may also have other rights which vary from state to state.



WALKER