

# WALKER

## Illustrated Parts Manual

# C23i



Note: The C23i shown in this manual is equipped with the optional 10.0 bushel catcher.

Beginning S/N: 193504  
P/N 6000-54

# KEY TO ABBREVIATIONS USED IN THIS MANUAL

<i>Abbreviation</i>	<i>What it Represents</i>
° (Dimension)	Degrees (Angle)
" (Dimension)	inches
(-)	Negative (Polarity)
(+)	Positive (Polarity)
-1 (as deck style designation)	Standard (Aluminum) Gear Drive Deck
-2 (as deck style designation)	Heavy Duty (Cast Iron) Gear Drive Deck
-3 (as deck style designation)	Belt Drive Deck
AT	All-Terrain
CCW	Counter-clockwise
CW	Clockwise
D	Diameter
DC	Deck, Collection (number refers to size in inches)
DM	Deck, Mulching (number refers to size in inches)
DR	Deck, Rear Discharge (number refers to size in inches)
DS	Deck, Side Discharge (number refers to size in inches)
DU	Garlock (Bearing)
ESNA (Fastener)	Nylon Insert Locknut
FSC	Forward Speed Control
GA	Gauge
gal.	gallon
GHS	Grass Handling System
GR (Fastener)	Grade
HD	Heavy Duty
HP	Horse Power
ID	Identification or Inside Diameter
L	Length
LH	Left Hand (orientated with operator on seat)
LP	Low Profile
mm (Dimension)	millimeters
MS (Fastener)	Machine Screw
NS (as part number)	Item is not sold by Walker Manufacturing
OD	Outside Diameter
oz.	ounce
PFH (Fastener)	Phillips Flat Head
P/N	Part Number
PPH (Fastener)	Phillips Pan Head
PTH (Fastener)	Phillips Truss Head
PTO	Power Take-Off
QKS	Quick Slide
qt.	quart
RH	Right Hand (orientated with operator on seat)
SAE (Fastener)	Society of Automotive Engineers
SBH (Fastener)	Socket Button Head (Bolt)
SFH (Fastener)	Slotted Flat Head
SHC (Fastener)	Socket Head Cap
SHL (Fastener)	Shoulder (Bolt)
SM (Fastener)	Sheet Metal (Screw)
S/N	Serial Number
SQH (Fastener)	Square Head
SS (Fastener)	Stainless Steel
ST (Fastener)	Self-Tapping (Screw)
V	Volts

**NOTE:** In some instances, combinations of abbreviations may be used (e.g. PPHMS - Phillips Pan Head Machine Screw).

# ILLUSTRATED PARTS LIST

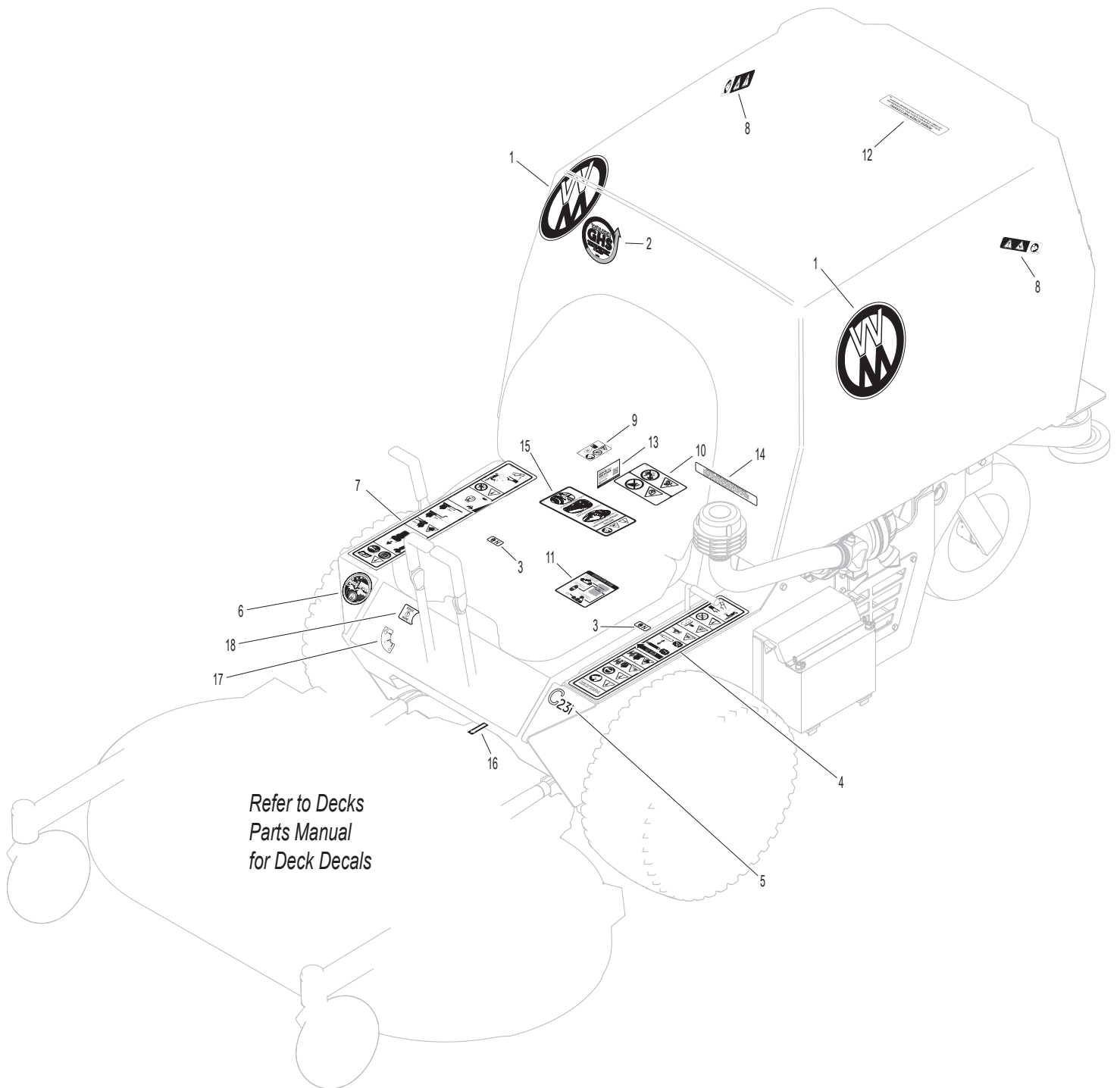
<i>Section of Tractor Covered</i>	<i>Page</i>	<i>Section of Tractor Covered</i>	<i>Page</i>
<hr/>		<hr/>	
<b>Decals</b>		<b>Electrical Components</b>	
Tractor Decals .....	2	Electrical Assembly .....	32
<b>Body / Chassis Assemblies</b>		Electrical Assemblies (GHS 7.0 Bushel Components).....	34
Front Body Assembly (7.0 / 10.0) .....	4	Electrical Assemblies (GHS 10.0 Bushel Components).....	36
Rear Body Assembly (7.0) .....	6	<b>Maintenance</b>	
Rear Body Assembly (10.0) .....	8	Lubrication Points .....	38
Chassis Assembly (7.0 / 10.0).....	10	Wiring Schematic .....	40
<b>Tractor Components</b>		<b>Warranty</b>	
Main Component Power Transmission .....	12	Limited Warranty .....	41
Engine Group .....	14		
Hydrostatic Ground Drive Assemblies.....	16		
Steering Control Assemblies.....	18		
GHS Group (7.0).....	20		
GHS Group (10.0).....	22		
GHS Powerfil® Assembly (7.0) .....	24		
GHS Powerfil® Assembly (10.0) .....	26		
GHS 7.0 Bushel Catcher Assembly.....	28		
GHS 10.0 Bushel Catcher Assembly.....	30		

# TRACTOR DECALS

ITEM NO.	PART NO.	DESCRIPTION	LOCATION	NO. REQ'D GHS
<b>Walker Product Decals</b>				
1	5800-22	Walker (8" Round)	7.0 / 10.0 Bushel Catcher (one on each side)	2
2	5813-2	Decal, 4" Grass-Pak Powerfil®	Powerfil® Cover Plate	1
3	9804-1	Axle Lockout	Chassis	2
4	8600-75	LH Fender	Chassis, LH near Seat	1
5	8821-33	Decal, C23i	Chassis, Front	1
6	5856-1	Made in USA	Chassis, Front	1
7	8600-68	RH Fender	Chassis, RH near Seat	1
<b>Danger Decals Warning Decals Caution Decals</b>				
8	8600-10	Danger, Pinch Point	7.0 / 10.0 Bushel Catcher Mounting Frame Assembly (one on each side)	2
9	8600-12	Danger, Engine Exhaust	Fuel Pump Module Cover, Top	1
10	8600-4	Danger, Rotating Blower Blades	Seat Panel Cover Plate	1
11	6107-1	Decal, Belt Routing	Seat Panel, Underside	1
<b>Maintenance Decals</b>				
12	5869	Removable Screen	7.0 / 10.0 Bushel Catcher Removable Screen	1
13	6895-103	Rehiko/Kohler 300 Hour Oil	Fuel Pump Module Cover, LH Side	1
14	5855	Important, Engine Cooling	Catcher Support, Front	1
15	8394-35	Jackshaft Decal	Jackshaft	1
16	6875	PTO Alignment Arrow	Universal Joint Tube Assembly	1
17	8600-54	Decal, Ignition Switch	Seat Panel, Front	1
18	5802-4	Engine Service Light	Seat Panel, Front	1

**NOTE:** All parts requiring decals are shipped with decals applied.

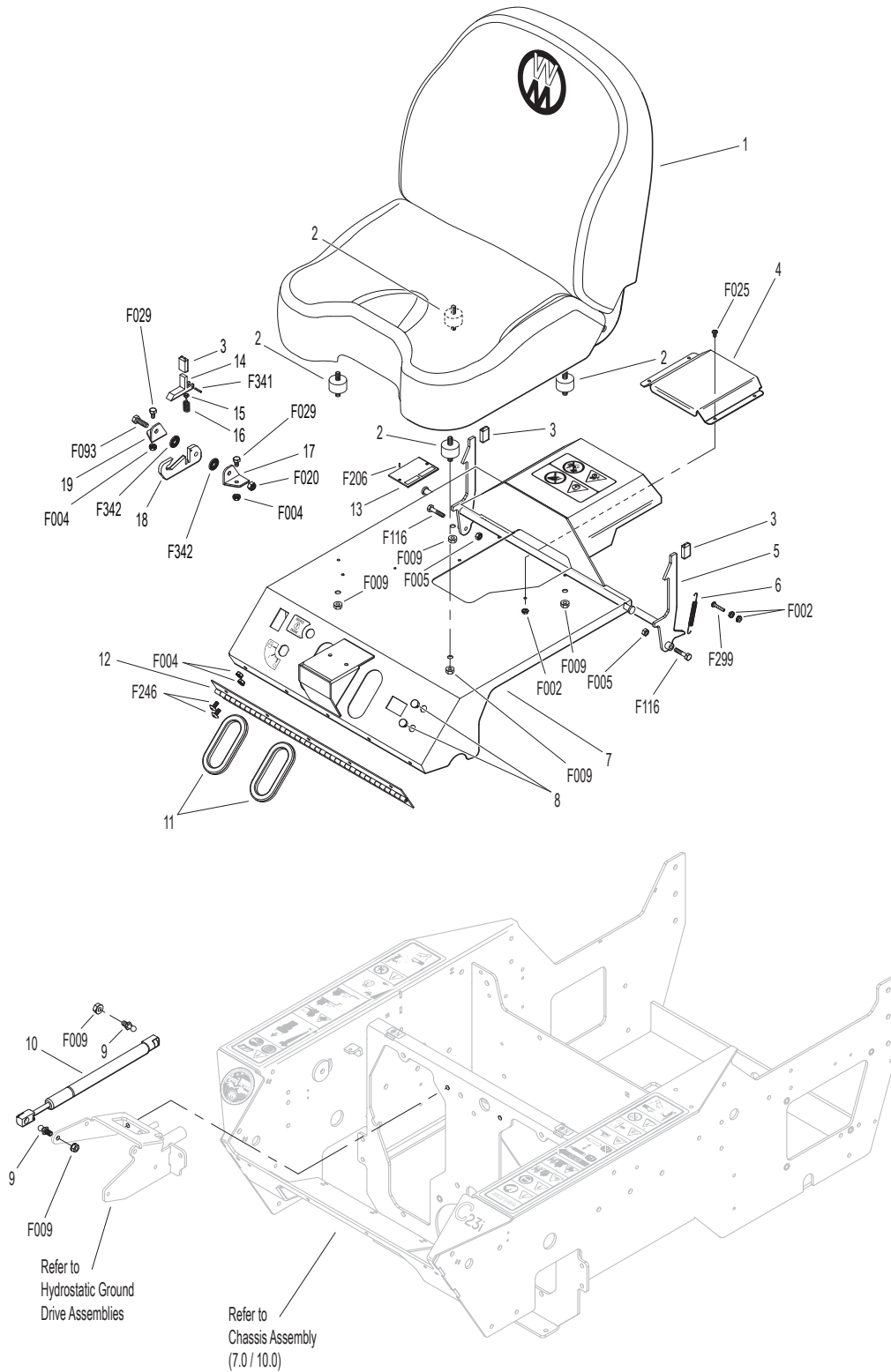
# TRACTOR DECALS



## FRONT BODY ASSEMBLY (7.0 / 10.0)

ITEM NO.	PART NO.	DESCRIPTION	NO. REQ'D	ITEM NO.	PART NO.	DESCRIPTION	NO. REQ'D
<b>Seat Assembly</b>				<b>Fasteners</b>			
1	6104-31	Comfort Seat	1	F002		10-24 Keps Nut	6
2	7440-5	Shock Mount (1-1/4 x 3/4)	4	F004		1/4-20 Keps Nut	10
<b>Body Assembly</b>				F005		1/4-20 ESNA Nut	2
3	5847	Plastic Tip	3	F009		5/16-18 Whiz Locknut	6
4	6101-11	Cover Plate	1	F020		5/16-18 ESNA Nut	1
5	7383-29	Body Latch Trigger	1	F025		10-24 x 3/8 PPHMS	4
6	7222	Extension Spring (1/4 x 3)	1	F029		1/4-20 x 1/2 Hex Bolt	2
7	6100-54	Front Body	1	F093		5/16-18 x 1 Hex Bolt	1
8	5989-55	Dome Plug (1/2)	2	F116		1/4-20 x 1-1/4 Hex Bolt	2
9	5146	10mm Ball Stud	2	F206		#2 x 3/16 Drive Pin	2
10	4145-2	Gas Spring Assembly (Includes Item #9)	1	F246		1/4-20 x 1/2 PTHMS	8
11	5180	Edge Molding, Lever Opening	2	F299		10-24 x 1 PPHMS	1
12	7504-5	Hinge (19")	1	F341		Coil Roll Pin (7/64 x 9/16)	1
13	NS	Body ID Plate	1	F342		5/16 Conical Washer	2
<b>Tilt-Up Latch Assembly*</b>				* Complete Tilt-Up Latch Assembly Kit available by ordering kit # 5744-5.			
14	5744-20	Spring Arm, Tilt-Up Latch	1				
15	5744-10	Spring Pivot Bushing	1				
16	5744-15	Compression Spring (3/8 x 5/8)	1				
17	5744-13	Mount Angle, LH	1				
18	5744-12	Hook, Tilt-Up Latch	1				
19	5744-14	Mount Angle, RH	1				

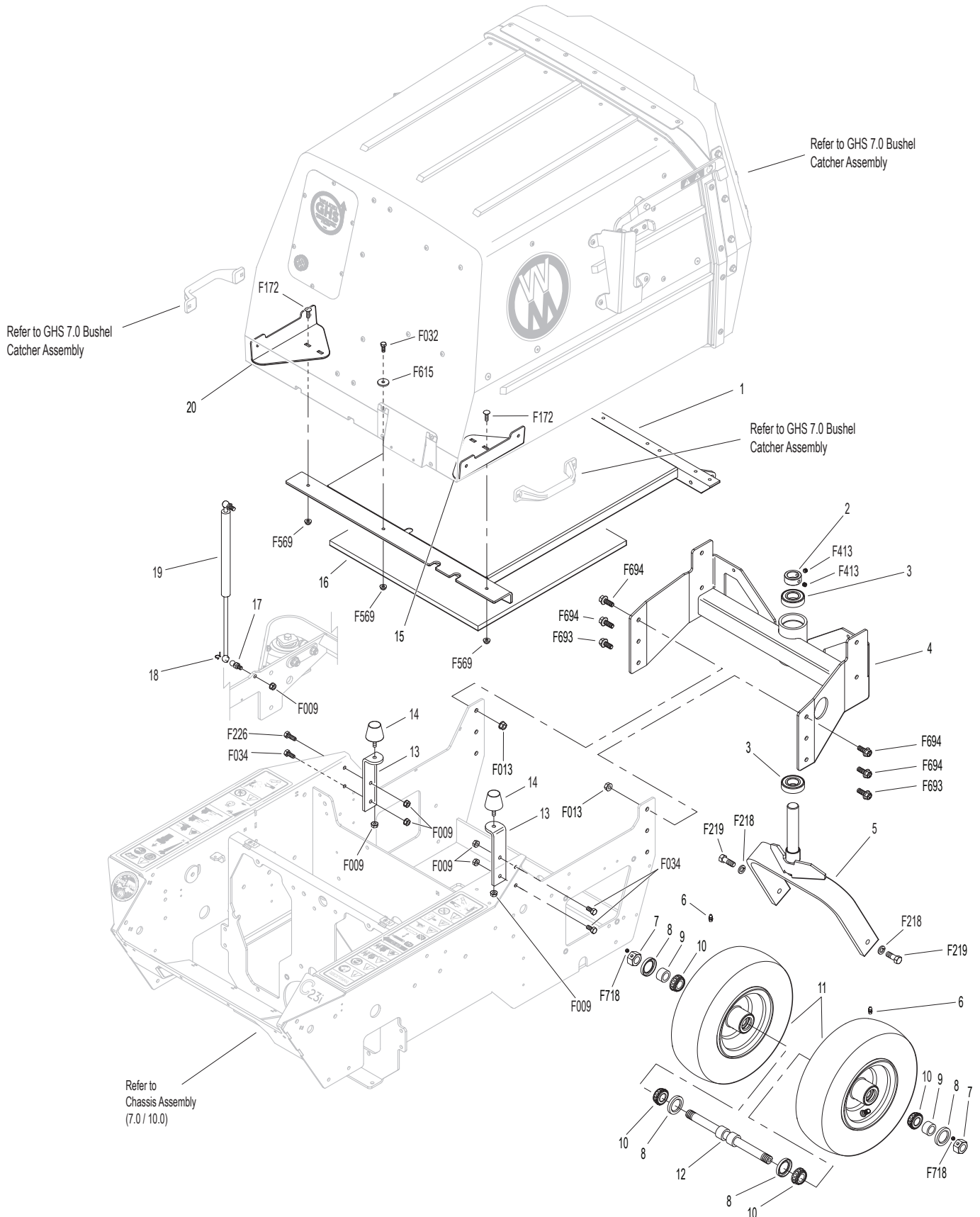
# FRONT BODY ASSEMBLY (7.0 / 10.0)



## REAR BODY ASSEMBLY (7.0)

ITEM NO.	PART NO.	DESCRIPTION	NO. REQ'D	ITEM NO.	PART NO.	DESCRIPTION	NO. REQ'D
<b>Rear Body Assembly</b>				<b>Fasteners</b>			
1	7515-1	Catcher Support	1	F009		5/16-18 Whiz Locknut	8
2	5267-1	Retainer Collar (1")	1	F013		3/8-16 Whiz Locknut	6
3	5270-1	Ball Bearing	2	F032		1/4-20 x 3/4 Hex Bolt	1
4	6342-1	Rear Chassis	1	F034		5/16-18 x 3/4 Hex Bolt	3
5	7420-12	Tail Wheel Fork	1	F172		1/4-20 x 3/4 Carriage Bolt	2
6	5830-3	Grease Fitting (45 Degrees)	2	F218		7/16 Split Lock Washer	2
7	8039	Nut, Tail Wheel Axle	2	F219		7/16-14 x 1-1/4 Hex Bolt	2
8	8768-2	Seal, Reverse Lip	4	F226		5/16-18 x 7/8 Hex Bolt	1
9	8038-1	Spacer, Wheel Axle (.750 ID x 1.125 OD)	2	F413		5/16-24 x 5/16 Set Screw	2
10	8037	Bearing Cone (3/4 ID)	4	F569		1/4-20 Flange Top Lock Nut	3
11	8035-1	Wheel & Tire Assembly (13 x 4.5-6) (With Bearing Race)	2	F615		1.0 x .255 x .125 Washer	1
	8035-3	Tail Wheel Tire (13 x 4.5-6 Ply)	*	F693		3/8-16 x 7/8 Flanged Hex Bolt	2
	8036	Wheel & Hub (6 x 3.25) (Includes Items # 6 & Bearing Race)	*	F694		3/8-16 x 1 Flanged Hex Bolt	4
	8037-2	Bearing Race	*	F718		5/16-18 x 5/16 Set Screw (Knurl Point)	2
	7420-20	Dual Tail Wheel & Tire Assembly (Includes Items # 7-12)	*	<b>NOTE:</b> Rear Bumper Assembly is not shown here. Refer to <b>CHASSIS ASSEMBLY (7.0 / 10.0)</b> , Page 10.			
12	8038	Tail Wheel Axle (3/4 x 10-3/8)	1	* Service Part Only			
13	6342-7	Catcher Bumper Mount	2				
14	5845	Rubber Bumper (1.50 x 1.25)	2				
15	8515-17	Catcher Handle Plate, LH	1				
16	7190-6	Insulation Foam Pad	1				
17	7146	13mm Ball Stud	2				
18	7147	Spring Clip	2				
19	7145	Gas Spring Assembly (Includes Items # 17 & 18)	1				
20	8515-18	Catcher Handle Plate, RH	1				

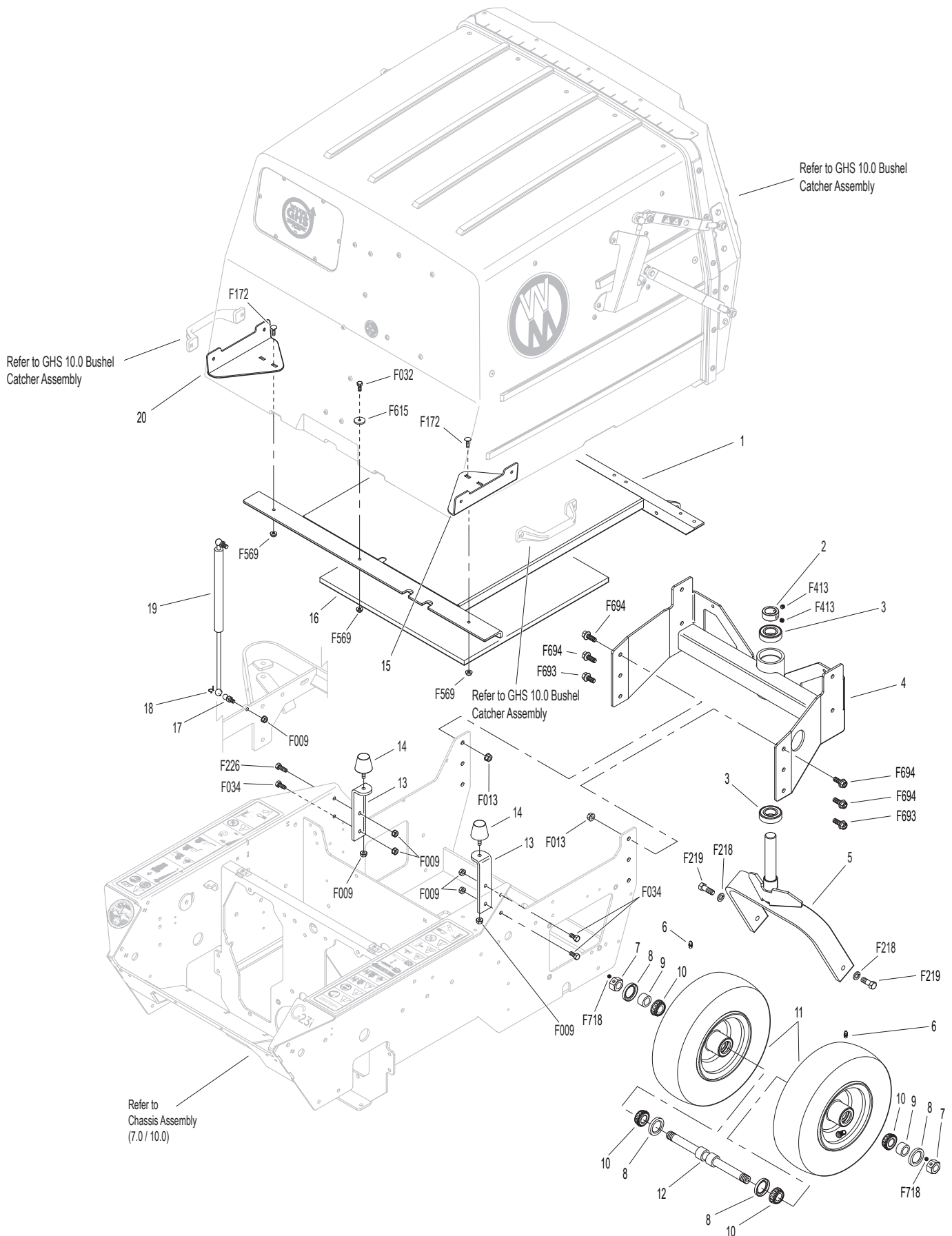
# REAR BODY ASSEMBLY (7.0)



## REAR BODY ASSEMBLY (10.0)

ITEM NO.	PART NO.	DESCRIPTION	NO. REQ'D	ITEM NO.	PART NO.	DESCRIPTION	NO. REQ'D
<b>Rear Body Assembly</b>				<b>Fasteners</b>			
1	6515-1	Catcher Support	1	F009		5/16-18 Whiz Locknut	8
2	5267-1	Retainer Collar (1")	1	F013		3/8-16 Whiz Locknut	6
3	5270-1	Ball Bearing	2	F032		1/4-20 x 3/4 Hex Bolt	1
4	6342-1	Rear Chassis	1	F034		5/16-18 x 3/4 Hex Bolt	3
5	7420-12	Tail Wheel Fork	1	F172		1/4-20 x 3/4 Carriage Bolt	2
6	5830-3	Grease Fitting (45 Degrees)	2	F218		7/16 Split Lock Washer	2
7	8039	Nut, Tail Wheel Axle	2	F219		7/16-14 x 1-1/4 Hex Bolt	2
8	8768-2	Seal, Reverse Lip	4	F226		5/16-18 x 7/8 Hex Bolt	1
9	8038-1	Spacer, Wheel Axle (.750 ID x 1.125 OD)	2	F413		5/16-24 x 5/16 Set Screw	2
10	8037	Bearing Cone (3/4 ID)	4	F569		1/4-20 Flange Top Lock Nut	3
11	8035-1	Wheel & Tire Assembly (13 x 4.5-6) (With Bearing Race)	2	F615		1.0 x .255 x .125 Washer	1
	8035-3	Tail Wheel Tire (13 x 4.5-6 Ply)	*	F693		3/8-16 x 7/8 Flanged Hex Bolt	2
	8036	Wheel & Hub (6 x 3.25) (Includes Items # 6 & Bearing Race)	*	F694		3/8-16 x 1 Flanged Hex Bolt	4
	8037-2	Bearing Race	*	F718		5/16-18 x 5/16 Set Screw (Knurl Point)	2
	7420-20	Dual Tail Wheel & Tire Assembly (Includes Items # 7-12)	*	<b>NOTE:</b> Rear Bumper Assembly is not shown here. Refer to <b>CHASSIS ASSEMBLY (7.0 / 10.0)</b> , Page 10.			
12	8038	Tail Wheel Axle (3/4 x 10-3/8)	1	* Service Part Only			
13	6342-7	Catcher Bumper Mount	2				
14	5845	Rubber Bumper (1.50 x 1.25)	2				
15	8515-17	Catcher Handle Plate, LH	1				
16	7190-6	Insulation Foam Pad	1				
17	7146	13mm Ball Stud	2				
18	7147	Spring Clip	2				
19	7145	Gas Spring Assembly (Includes Items # 17 & 18)	1				
20	8515-18	Catcher Handle Plate, RH	1				

# REAR BODY ASSEMBLY (10.0)



Model C23i Beginning S/N 193504  
 Use only genuine **Walker**® replacement parts.

## CHASSIS ASSEMBLY (7.0 / 10.0)

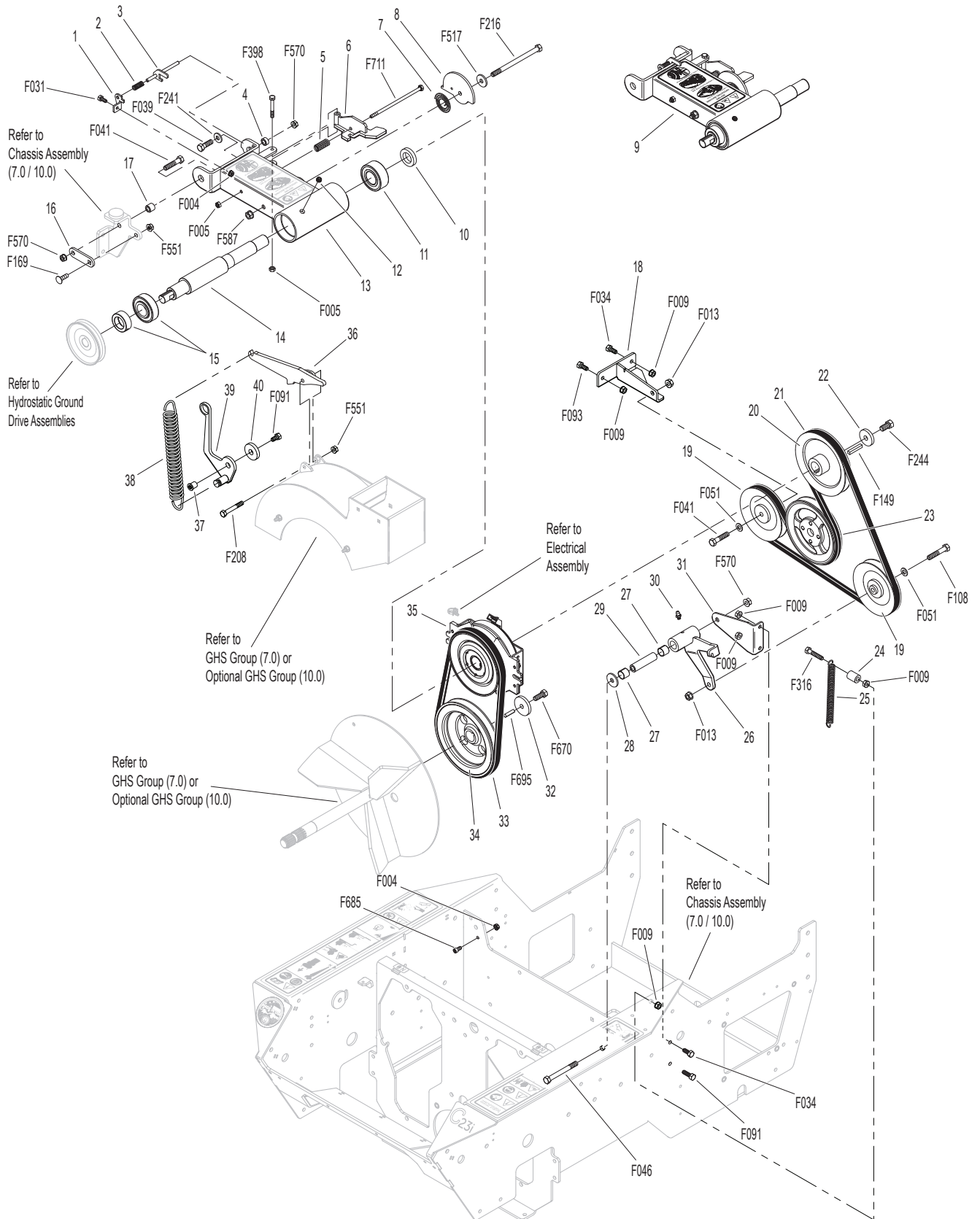
ITEM NO.	PART NO.	DESCRIPTION	NO. REQ'D	ITEM NO.	PART NO.	DESCRIPTION	NO. REQ'D
<b>Rear Bumper Assembly</b>				<b>Fasteners</b>			
1	7516-12	Rear Bumper (10.0)	1	F004		1/4-20 Keps Nut	2
	7516-13	Rear Bumper (7.0)	*	F009		5/16-18 Whiz Locknut	19
2	7516-5	Catcher Pivot Bushing	2	F013		3/8-16 Whiz Locknut	4
3	7517-4	Catcher Pivot Plate	2	F014		3/8-16 ESNA Nut	2
4	5162	Roller Wheel (5" Rubber)	2	F031		1/4-20 x 5/8 Hex Bolt	4
<b>Chassis Assembly</b>				F032		1/4-20 x 3/4 Hex Bolt	2
5	6307-9	Air Cleaner Mount	1	F034		5/16-18 x 3/4 Hex Bolt	16
6	5300-22	Side Cover	1	F038		3/8-16 x 1 Hex Bolt	2
7	6307-8	Chassis Frame	1	F041		3/8-16 x 1-3/4 Hex Bolt	2
8	6310-5	Skid Plate	1	F042		3/8-16 x 2-1/4 Hex Bolt	2
9	8394-15	Front Body Bumper Mount, LH	1	F051		3/8 SAE Washer	4
10	7844	Rubber Bumper (1.25 x .250)	2	F059		3/8 Wave Spring Washer	2
11	8394-24	Front Body Bumper Mount, RH	1	F091		5/16-18 x 5/8 Hex Bolt	1
12	6046-11	Gas Tank Mount	1	F151		3/8-16 x 7/8 Hex Bolt	4
<b>Deck Support Arm &amp; Hitch Assemblies</b>				F169		5/16-18 x 1 Carriage Bolt	2
13	6431-12	Deck Arm Mount, RH	1	F173		5/16-18 x 3/4 Carriage Bolt	2
14	6431-11	Deck Arm Mount, LH	1	F226		5/16-18 x 7/8 Hex Bolt	2
15	5830	Grease Fitting	2	F241		.375 x .875 x .10 Washer	4
16	6840-4	Deck Arm Bushing (3")	2	F551		5/16-18 Flange Top Lock Nut	4
17	6431-13	Deck Support Arm, LH (Includes Item # 15)	1	F570		3/8-16 Flange Top Lock Nut	4
18	5775-2	Hitch Pin (#6)	2	F591		7/16-14 Flange Top Lock Nut	2
19	6431-14	Deck Support Arm, RH (Includes Item # 15)	1	F687		7/16-14 x 4 Hex Bolt, Grade 8	2
				* Service Part Only			



# MAIN COMPONENT POWER TRANSMISSION

ITEM NO.	PART NO.	DESCRIPTION	NO. REQ'D	ITEM NO.	PART NO.	DESCRIPTION	NO. REQ'D
<b>Swing-Away Jackshaft Assembly</b>				<b>Jackshaft Tensioner Assembly</b>			
1	8394-10	Lock Tab	1	36	8394-40	Jackshaft Tensioner Lever	1
2	7223-5	Compression Spring (3/8 x 1-1/2)	1	37	7620-16	Roller Bushing	1
3	8394-9	Locking Pin	1	38	5221-6	Extension Spring (1-1/4 x 6-1/2)	1
4	6325-8	Bushing (.375 x .625 x .280)	1	39	8394-11	Jackshaft Spring Tensioner	1
5	5665-2	Compression Spring (.590 x 1.438)	1	40	8394-12	Washer (1/2 x 1-1/2 x .288)	1
6	6410-9	Clutch Stop	1	<b>Fasteners</b>			
7	6235	Spring, Belt Tension Cam	1	F004	1/4-20 Keps Nut		2
8	8394-18	Jackshaft Tension Cam	1	F005	1/4-20 ESNA Nut		2
9	8394-37	Jackshaft Swingarm Assembly (Includes Items # 1-3, 5-8, 11-15, F004, F005, F031, F216, F398, F517, F587 & F711)	1	F009	5/16-18 Whiz Locknut		6
10	8394-16	Jackshaft Clutch Spacer (1.625 x 1.128 x .465)	1	F013	3/8-16 Whiz Locknut		2
11	5270-3	Double Row Ball Bearing	1	F031	1/4-20 x 5/8 Hex Bolt		1
12	6207-19	1/8 NPT Plug	1	F034	5/16-18 x 3/4 Hex Bolt		2
13	8394-39	Jackshaft Swingarm (Includes Item # 12)	1	F039	3/8-16 x 1-1/4 Hex Bolt		1
14	6273-10	Jackshaft (Includes Items # 11 & 15)	1	F041	3/8-16 x 1-3/4 Hex Bolt		2
15	5270-5	Ball Bearing	1	F046	3/8-16 x 3-1/2 Hex Bolt		1
16	8394-19	Swingarm Pivot Plate	1	F051	3/8 SAE Washer		2
17	6325-3	Spacer Bushing (9/16)	1	F091	5/16-18 x 5/8 Hex Bolt		2
<b>Engine Belt Tightener Assembly</b>				F093	5/16-18 x 1 Hex Bolt		1
18	6345-7	Engine Idler Mount	1	F108	3/8-16 x 2 Hex Bolt		1
19	5245-7	Idler Pulley (5/V)	2	F149	1/4 x 1/4 x 1-1/2 Key		1
20	7240-6	Jackshaft Pulley (Includes Item # F149)	1	F169	5/16-18 x 1 Carriage Bolt		1
21	6230-3	Engine Belt (BB64)	1	F208	5/16-18 x 2-1/4 Hex Bolt		1
22	8394-17	Jackshaft Washer	1	F216	3/8-16 x 5-1/2 Hex Bolt		1
23	8237-11	Engine Pulley	1	F241	.375 x .875 x .10 Washer		1
24	M111	Hose (1/4 x 3/4")	1	F244	7/16-20 x 3/4 Hex Bolt		1
25	5221-1	Extension Spring (3/4 x 5)	1	F316	5/16-18 x 1-3/4 Hex Bolt		1
26	6358-14	Idler Weldment (Includes Items # 27 & 30)	1	F398	1/4-20 x 2 Hex Bolt		1
27	7201-3	Fiberglide Bearing	2	F517	Washer 3/8 x 1-1/8 x 1/8		1
28	5841	Retainer Washer (3/8 x 1-1/4)	1	F551	5/16-18 Flange Top Lock Nut		2
29	7201-7	Inner Race (2-5/8)	1	F570	3/8-16 Flange Top Lock Nut		3
30	5830	Grease Fitting	1	F587	3/8-16 Top Lock Flange Nut, Grade G		1
31	6358-11	Idler Arm Mount	1	F670	3/8-24 x 1 Hex Bolt Grade 8		1
<b>PTO Drive Assembly</b>				F685	1/4-20 x 1/2 SHC Screw		1
32	4401-4	Washer (1-3/4 x 3/8 x 1/4 Thk)	1	F695	1/4 x 1/4 x 7/8 Key		1
33	6231-1	PTO Drive Belt (B35K)	1	F711	1/4-20 x 6 Hex Bolt, Grade 5		1
34	7239-2	Blower Pulley (Includes Items # 32, F670 & F695)	1				
35	6410-1	Clutch	1				

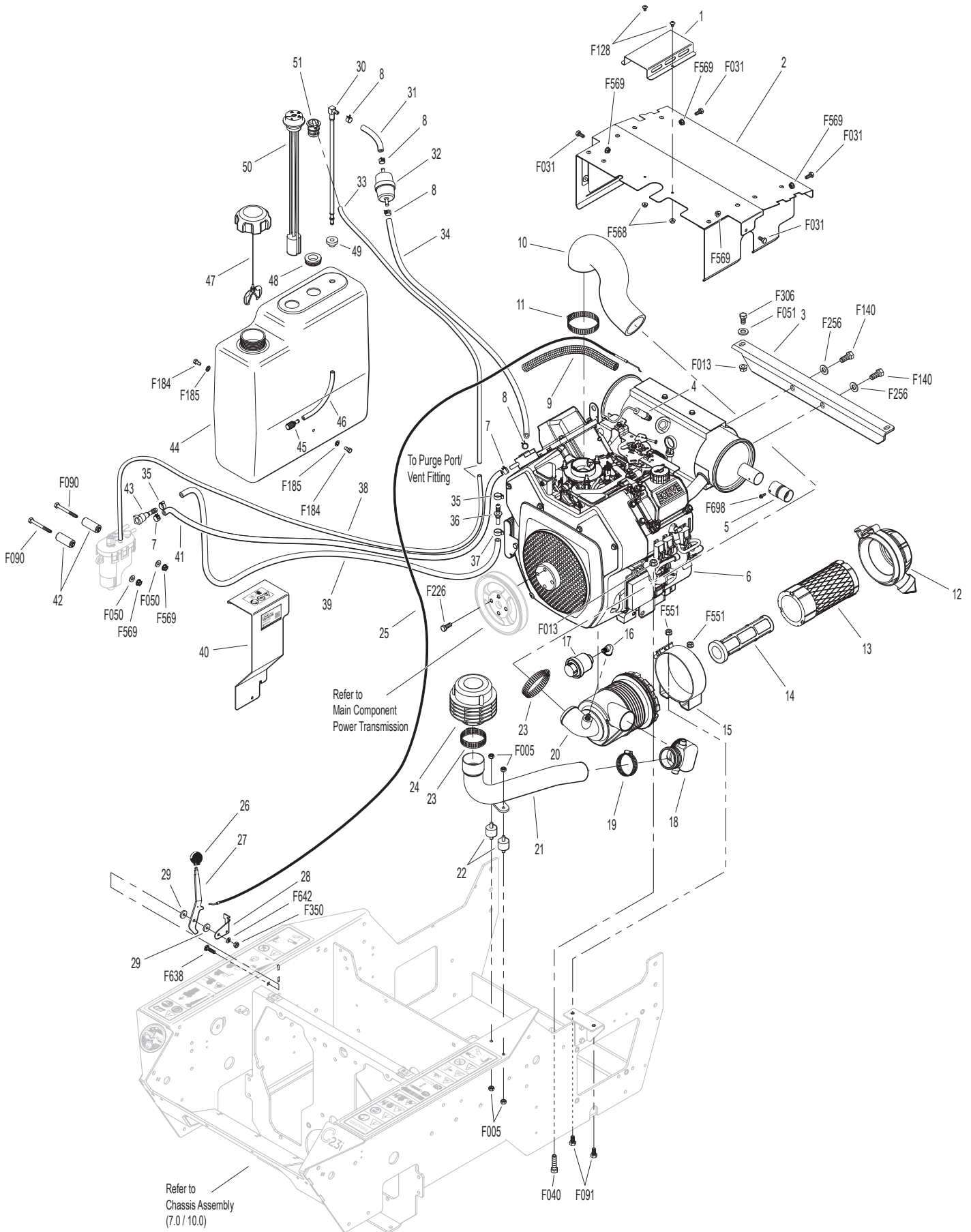
# MAIN COMPONENT POWER TRANSMISSION



# ENGINE GROUP

ITEM NO.	PART NO.	DESCRIPTION	NO. REQ'D	ITEM NO.	PART NO.	DESCRIPTION	NO. REQ'D
<b>Engine Assembly</b>				37	NS	Clamp (Rehiko/Kohler)	1
1	6013-41	Heat Shield O2 Cover (Includes Items # F128 & F568)	1	38	M381	EVAP Line (5/32 x 15-1/2")	1**
2	6013-38	Heat Shield (Includes Items # 1, F128 & F568)	1	39	M247	Fuel Line, Tank (5/16 x 16-1/2")	1**
3	6342-6	Motor Brace	1	40	8018-9	Fuel Pump Module Cover	1
4	NS	Sensor, Oxygen (Rehiko/Kohler)	1	41	M246	Fuel Line (1/4 x 3-1/2")	1**
5	8014-15	Extended Spark Arrestor	1	42	8018-8	Fuel Module Standoff	2
6	NS	23 HP Engine, EFI (Rehiko/Kohler)	1	43	8046-17	Quick Coupler Straight (5/16 x 5/16)	1
7	5879-2	Hose Clamp (7/16 Silver)	2	44	8055-1	Fuel Tank, 4.7 Gallon, Gas (Black) (Includes Items # 30, 45, 46 & 48-51)	1
8	5879-3	Hose Clamp (1/2)	4	45	5020-2	Fuel Filter, In Tank	1
9	M265	Insultherm (3/8 x 8")	1	46	5086-7	Hose (1/4 x 6)	1
<b>Precleaner Assembly</b>				47	5082-4	2-1/4 Ratchet Fuel Cap	1
10	6087-10	Air Intake Hose	1	48	5977-7	Roll Over Grommet (.900 x 1-1/2)	1
11	6029	Hose Clamp (1-13/16 to 2-3/4)	1	49	5083-1	Bushing, Rubber	1
12	2088-2	Air Cleaner Cap	1	50	8055-2	Fuel Tank Gauge	1
13	2090-1	Air Cleaner Cartridge	1	51	8043-8	Roll Over Valve	1
14	2090-3	Safety Filter Insert	1	<b>Fasteners</b>			
15	5088-3	Air Cleaner Band	1	F005	1/4-20 ESNA Nut		4
16	5091-16	Street Elbow 90° (1/8 x 1/8)	1	F013	3/8-16 Whiz Locknut		6
17	5091-18	Air Flow Indicator (Vacuum 15" H2O)	1	F031	1/4-20 x 5/8 Hex Bolt		4
18	2090-4	Low Profile Precleaner Elbow	1	F040	3/8-16 x 1-1/2 Hex Bolt		4
19	7840	Hose Clamp (1-5/16 to 2-1/4)	1	F050	1/4 SAE Washer		2
20	2090-21	Air Cleaner Assembly (Includes Items # 12-15)	*	F051	3/8 SAE Washer		2
21	7028-7	Precleaner Tube	1	F090	1/4-20 x 2-1/2 Hex Bolt		2
22	7432	Shock Mount (1.0 OD x .75)	2	F091	5/16-18 x 5/8 Hex Bolt		2
23	7840-5	Hose Clamp (1.56 to 2.50)	2	F128	10-24 x 3/8 PTHMS		2
24	7026-3	Remote Precleaner (Includes Item # 23)	1	F140	7/16-14 x 1 Hex Bolt		2
<b>Throttle Assembly</b>				F184	1/4-20 x 1/2 Hex Bolt, SS		2
25	5108-39	Throttle Cable (31")	1	F185	1/4 Internal Star Lock Washer, SS		2
26	5108-5	Throttle Control Knob, Red	1	F226	5/16-18 x 7/8 Hex Bolt		4
27	5108-20	Control Lever, Throttle	1	F256	7/16 SAE Washer		2
28	5108-21	Control Bracket	1	F306	3/8-16 x 3/4 Hex Bolt		2
29	5108-10	Friction Washer (.125)	2	F350	1/4-20 LP Nylock		1
<b>Fuel Tank Assembly</b>				F551	5/16-18 Flange Top Lock Nut		2
30	5083-8	Tank Tube (13")	1	F568	10-24 Flange Top Lock Nut		2
31	M246	Fuel Line (1/4 x 4")	1**	F569	1/4-20 Flange Top Lock Nut		6
32	5020-3	Fuel Filter, EFI (9-12 Micron)	*	F638	1/4-20 x 1 Carriage Bolt		1
33	M113	Fuel Line (3/16 x 10")	1**	F642	1/4 x .042 Belleville Washer		1
34	M246	Fuel Line (1/4 x 2-1/2")	1**	F698	#8 x 1/2 Hex Head Drilling Screw		1
35	5879-9	Stepless Ear Clamp, Black (15.7)	2	* Service Part Only			
36	8046-14	Quick Connector, Male (5/16)	1	** Required hose specifications: M113 – 3/16" ID fuel/oil/vapor hose M246 – 1/4" ID low permeation (<15g/m <sup>2</sup> /day) fuel hose M247 – 5/16" ID low permeation (<15g/m <sup>2</sup> /day) fuel hose M381 – 5/32" EVAP hose			

# ENGINE GROUP

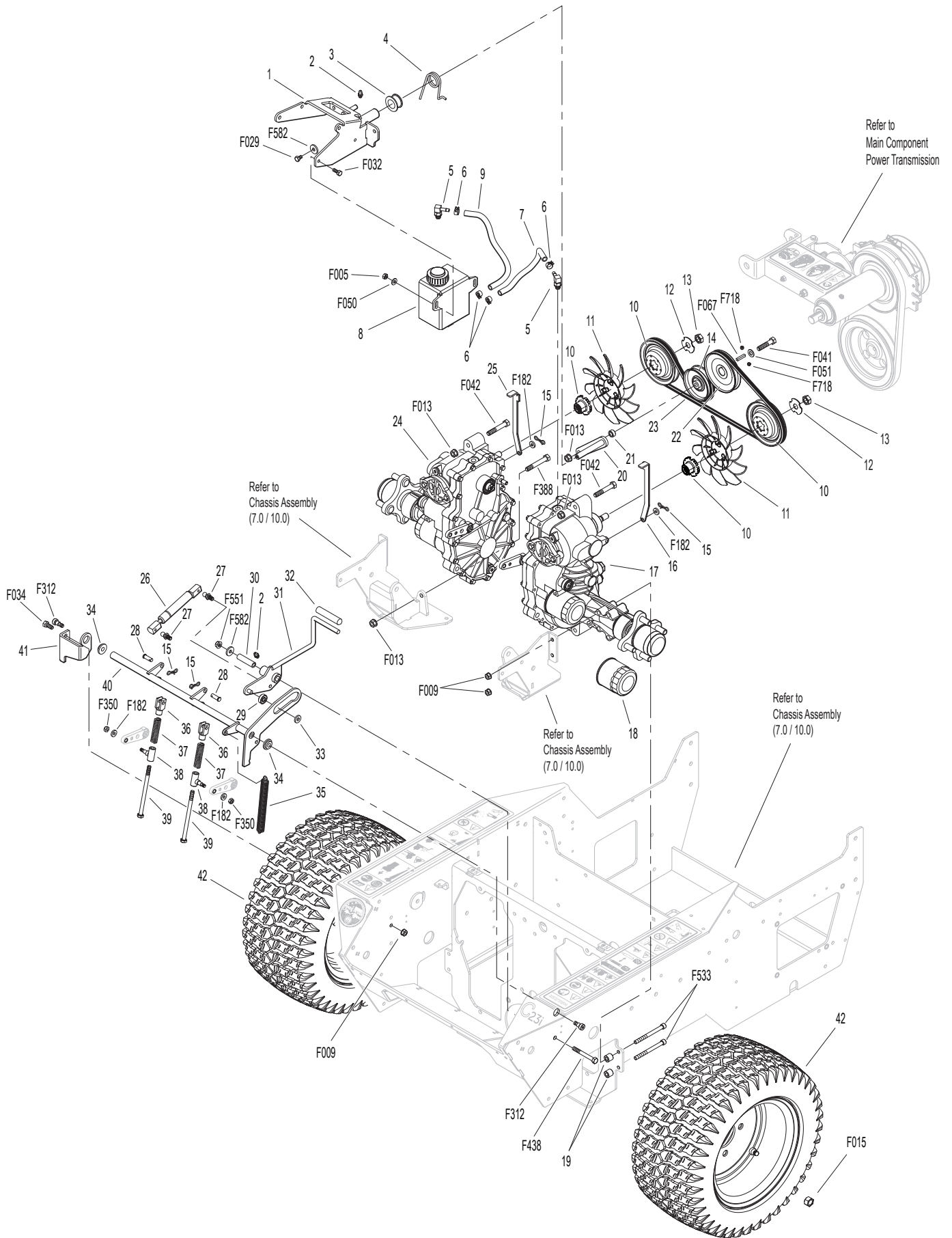


Model C23i Beginning S/N 193504  
Use only genuine **Walker**® replacement parts.

# HYDROSTATIC GROUND DRIVE ASSEMBLIES

ITEM NO.	PART NO.	DESCRIPTION	NO. REQ'D	ITEM NO.	PART NO.	DESCRIPTION	NO. REQ'D
<b>Transaxle Reservoir Assembly</b>				<b>Wheel Assembly</b>			
1	6215-33	Steering Dampener Mount	1	42	5075-3	LP Wheel & Tire Assembly (18 x 8.50-10)	2
2	5830	Grease Fitting	2	<b>Fasteners</b>			
3	7364-3	Idler Spring Bushing	1	F005	1/4-20 ESNA Nut		2
4	7364-2	Torsion Spring	1	F009	5/16-18 Whiz Locknut		6
5	2025-17	Straight Thread Hose Fitting	2	F013	3/8-16 Whiz Locknut		5
6	5879-2	Hose Clamp (7/16 Silver)	4	F015	1/2-20 Wheel Lug Nut		8
7	M111	Hose (1/4 x 9-3/4")	1*	F029	1/4-20 x 1/2 Hex Bolt		1
8	4023-3	Oil Expansion Reservoir	1	F032	1/4-20 x 3/4 Hex Bolt		2
9	M111	Hose (1/4 x 10-3/4")	1*	F034	5/16-18 x 3/4 Hex Bolt		2
<b>Ground Drive Assemblies</b>				F041	3/8-16 x 1-3/4 Hex Bolt		1
10	4026-18	Fan & Pulley Kit (Includes Items # 11-13)	2	F042	3/8-16 x 2-1/4 Hex Bolt		2
11	4026-13	Hydro Pulley Fan	2	F050	1/4 SAE Washer		2
12	5025-18	Hydro Fan Washer	2	F051	3/8 SAE Washer		1
13	5025-19	Hydro Fan Nut	2	F067	3/16 x 3/16 x 1 Key		1
14	5245	Idler Pulley (3")	1	F182	1/4 x 5/8 x 1/8 Washer		4
15	4407-4	Bow Tie Cotter Pin	4	F312	3/8 x 3/8 Shoulder Bolt		2
16	2028-5	Lockout Arm, LH	1	F350	1/4-20 LP Nylock		2
17	5025-44	Hydro-Gear ZT-3100, LH	1	F388	3/8-16 x 2-1/2 Hex Bolt		2
18	2026-17	Hydro-Gear® Oil Filter	2	F438	5/16-18 x 2-3/4 Hex Bolt		1
19	9430-1	Spacer Tube	4	F533	Socket Cap Bolt, 5/16-18 x 3-1/2		4
20	6232-10	Ground Drive Idler	1	F551	5/16-18 Flange Top Lock Nut		1
21	6325-2	Spacer Bushing (5/16)	1	F582	Washer 5/16 x 7/8 x .125		1
22	4240-1	Drive Pulley (Includes Items # F067 & F718)	1	F718	5/16-18 x 5/16 Set Screw (Knurl Point)		2
23	6232-1	Ground Drive Belt (AX47 X5)	1	<b>* Required hose specifications:</b>			
24	5026-44	Hydro-Gear ZT-3100, RH	1	M111 – 1/4" ID fuel/oil/vapor hose			
25	2028-6	Lockout Arm, RH	1				
<b>Parking Brake Assembly</b>							
26	4215-13	Dampener	1				
27	5146	10mm Ball Stud	2				
28	5281-2	Clevis Pin (5/16 x 7/8)	2				
29	5270-2	Ball Bearing	1				
30	7201-11	Inner Race (1.938)	1				
31	7406-14	Parking Brake Lever (Includes Item # 2)	1				
32	7406-1	Handle Grip, Red	1				
33	7406-12	Bearing Retainer / Spacer	1				
34	9704-3	Pivot Rod Bushing / Plastic	2				
35	5227-1	Extension Spring (1/2 x 4)	1				
36	5280-4	Clevis Fork	2				
37	5665-1	Compression Spring (2-1/2)	2				
38	5463	Steering Lever Actuator	2				
39	4303-7	Clutch Actuator Bolt (5/16)	2				
40	7406-11	Parking Brake Cross Shaft	1				
41	7406-13	Parking Brake Cross Shaft Bracket	1				

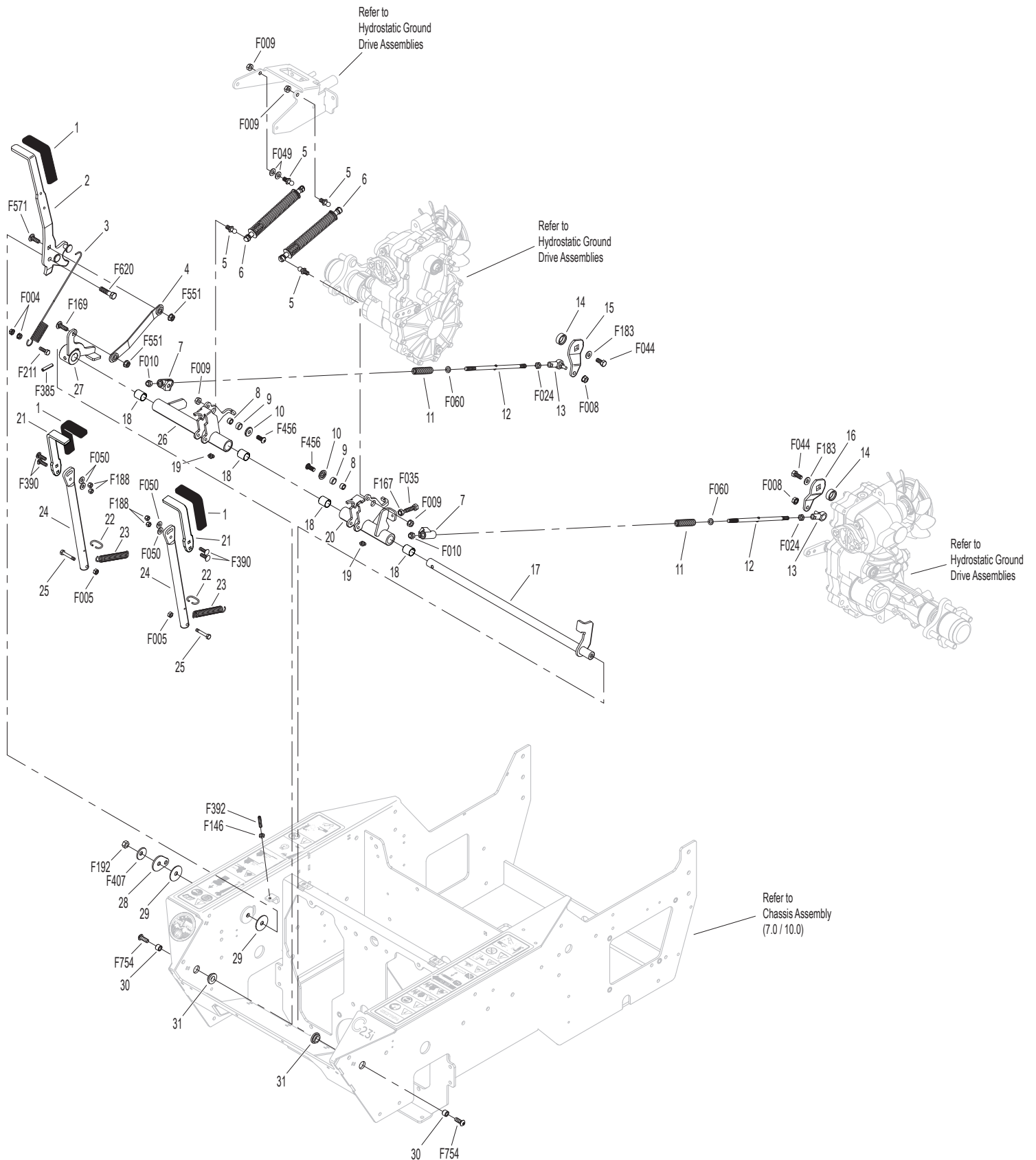
# HYDROSTATIC GROUND DRIVE ASSEMBLIES



# STEERING CONTROL ASSEMBLIES

ITEM NO.	PART NO.	DESCRIPTION	NO. REQ'D	ITEM NO.	PART NO.	DESCRIPTION	NO. REQ'D
<b>Steering Lever &amp; FSC Assemblies</b>				<b>Fasteners</b>			
1	5850-2	Handle Grip, Foam (5-1/2)	3	F004	1/4-20 Keps Nut		2
2	4170-2	FSC Lever	1	F005	1/4-20 ESNA Nut		2
3	4219-1	Extension Spring	1	F008	5/16-24 Keps Nut		2
4	4170-3	FSC Linkage	1	F009	5/16-18 Whiz Locknut		4
5	5146	10mm Ball Stud	4	F010	5/16-24 ESNA Nut		2
6	4199-4	Steering Lever Dampener Assembly	2	F024	5/16-24 Jam Nut		2
7	5463-7	Steering Lever Actuator	2	F035	5/16-18 x 1-1/4 Hex Bolt		1
8	5463-5	Steering Arm Pivot Bushing (SS)	2	F044	5/16-24 x 3/4 Hex Bolt		2
9	7201-2	Fiberglide Bearing (1/2")	2	F049	5/16 SAE Washer		2
10	4215-14	Step Washer	2	F050	1/4 SAE Washer		4
11	5665-1	Compression Spring (2-1/2)	2	F060	AN960516 Washer		2
12	5213-7	Control Rod (8-3/8)	2	F146	1/4-20 Jam Nut		1
13	5214-2	Ball Joint (5/16-24) (Nylon Lined)	2	F167	5/16-18 Hex Nut		1
14	2212-3	Seal Retainer	2	F169	5/16-18 x 1 Carriage Bolt		1
15	6212-8	Transmission Control Arm, RH	1	F183	.312 x .700 x .074 Washer		2
16	6212-9	Transmission Control Arm, LH	1	F188	1/4-20 Self-Locking Nut		4
17	6451-7	Steering Pivot Shaft W/Stop	1	F192	3/8-24 Self-Locking Nut		1
18	8201-3	Fiberglide Bearing	4	F211	1/4-20 x 7/8 Hex Bolt		1
19	5830	Grease Fitting	2	F385	1/4 x 1-1/4 Roll Pin		1
20	6451-5	Speed Control Actuator, LH (Includes Items # 18 & 19)	1	F390	1/4-20 x 7/8 Carriage Bolt		4
21	5453-14	Steering Lever Handle, Adjustable (Includes Items # 1, F050, F188 & F390)	2	F392	1/4-20 x 1 Set Screw/SS Cup Point		1
22	5450	D-Clip	2	F407	Belleville Washer 3/8 x 1.187, SS		1
23	5222	Extension Spring (1/2 x 3-1/4)	2	F456	5/16-18 x 3/4 SBH Cap Screw, SS		2
24	6452-1	Steering Lever Tube W/Tab	2	F551	5/16-18 Flange Top Lock Nut		2
25	4452-6	Steering Pivot (1/4-20 x 1-5/8)	2	F571	5/16-18 x 7/8 Carriage Bolt		1
26	6451-10	Speed Control Actuator, RH (Includes Items # 18 & 19)	1	F620	3/8-24 x 1-1/2 Hex Bolt		1
27	6451-9	FSC Friction Actuator	1	F754	5/16-18 x 7/8 Button Head Cap Screw		2
28	4142-1	FSC Cam	1				
29	5141	FSC Friction Washer (1-1/2 x 3/8 x 1/16)	2				
30	5463-8	Pivot Bushing, SS (.5 x .313 x .350)	2				
31	9704-4	Pivot Rod Bushing	2				

# STEERING CONTROL ASSEMBLIES



Model C23i Beginning S/N 193504  
 Use only genuine Walker® replacement parts.

# GHS GROUP (7.0)

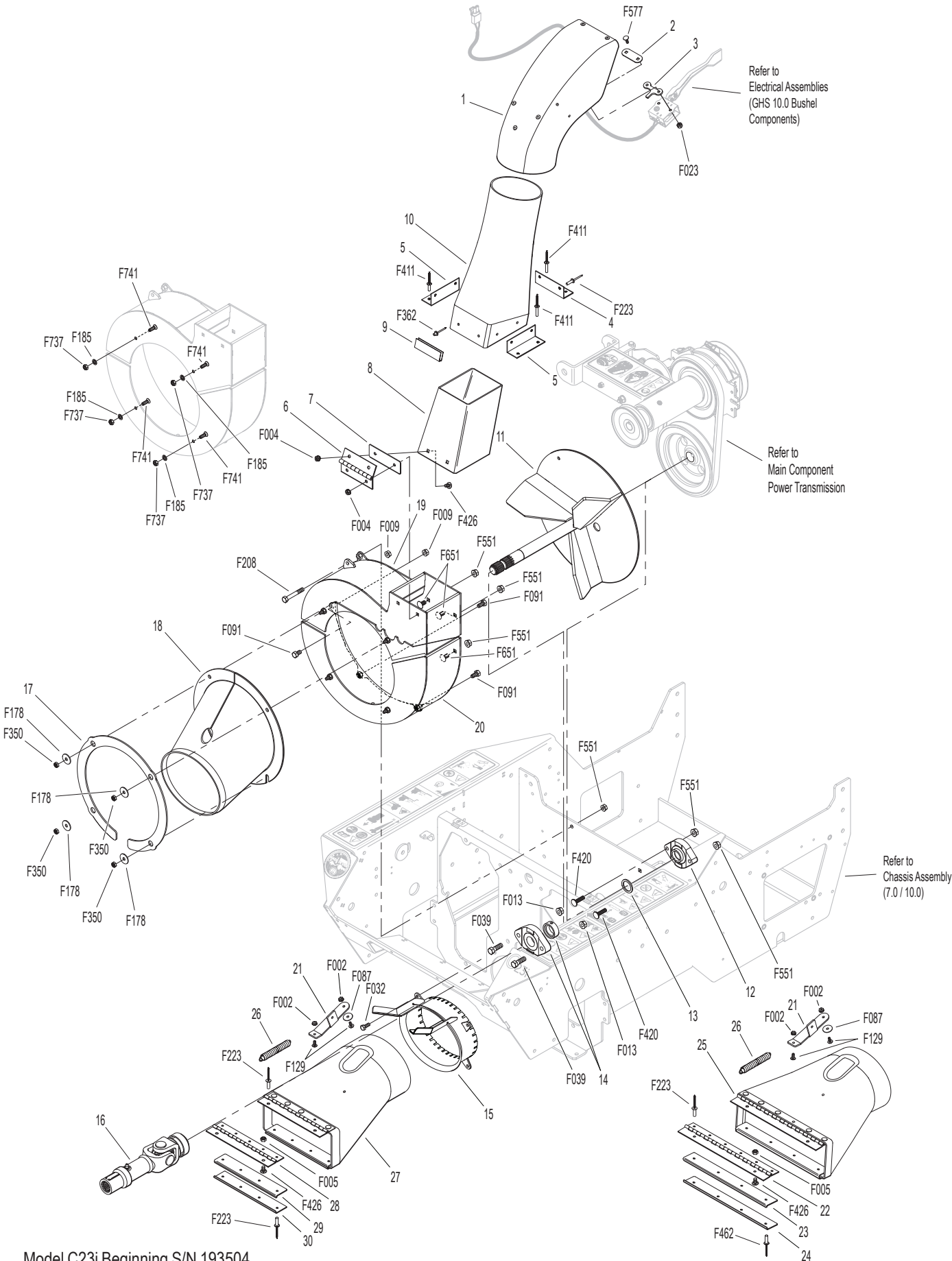
ITEM NO.	PART NO.	DESCRIPTION	NO. REQ'D	ITEM NO.	PART NO.	DESCRIPTION	NO. REQ'D
<b>Delivery Chute Assembly</b>				<b>Fasteners</b>			
1	5515-4	Elbow Delivery Spout	1	F002		10-24 Keps Nut	2
2	5592-24	Backing Plate, Grass-Pak® Switch	1	F004		1/4-20 Keps Nut	4
3	5592-23	Grass-Pak® Housing Spacer	1	F005		1/4-20 ESNA Nut	2
4	5578	Rear Clip, Chute Mount	1	F009		5/16-18 Whiz Locknut	2
5	5577	Side Clip, Chute Mount	2	F013		3/8-16 Whiz Locknut	2
6	6530-7	Body Chute	1	F023		10-24 ESNA Nut	2
7	7504-7	Hinge (4")	1	F032		1/4-20 x 3/4 Hex Bolt	4
8	7504-10	Hinge Spacer	1	F039		3/8-16 x 1-1/4 Hex Bolt	2
9	7511-5	Outside Chute Cover Lip	1	F079		A/A66D Aluminum Pop Rivet	2
10	7511-4	Inside Chute Cover Lip	1	F087		#10 x 7/8 Fender Washer	1
11	5511-3	Delivery Chute W/Clips (Includes Items # 4, 5, F223 & F411)	1	F091		5/16-18 x 5/8 Hex Bolt	4
				F129		10-24 x 1/2 PTHMS	2
				F178		1/4 x 1 Fender Washer	4
				F185		1/4 Internal Star Lock Washer, SS	4
				F208		5/16-18 x 2-1/4 Hex Bolt	1
				F223		3/16 x 5/16 Semi-Tube Rivet	12
				F350		1/4-20 LP Nylock	4
				F411		3/16 Bulbex Rivet	6
				F420		5/16-18 x 1-1/4 Carriage Bolt	2
				F426		1/4-20 x 1/2 Carriage Bolt	6
				F462		3/16 x .468 (+/- .010) Semi-Tube Rivet	4
				F551		5/16-18 Flange Top Lock Nut	6
				F577		10-24 x 5/8 Carriage Bolt	2
				F651		5/16-18 x 5/8 Carriage Bolt, Gr 2	3
				F737		1/4-20 Center Lock Nut, GR B	4
				F741		1/4-20 x 3/4 Undercut Stainless Phillips Flat Head Screw	4
<b>Blower Assembly</b>				* Used with DC48 deck only			
12	6545-16	Blower Wheel	1				
13	6349-9	Flanged Bearing (1")	1				
14	6545-8	Blower Spacer	1				
15	4349-14	Flanged Bearing (1") Machine Flat	1				
16	5526-10	Receiver Cone	1				
17	7275-3	U-Joint Tube, Splined	1				
18	6543-13	Blower Faceplate Ring	1				
19	5794-8	Fixed Chute	1				
20	6543-16	Blower Weldment, Top (Includes Items # F178, F185, F350, F737 & F741)	1				
21	6543-17	Blower Weldment, Bottom (Includes Items # F178, F185, F350, F737 & F741)	1				
<b>Deck Chute Assemblies</b>				** Used with all other decks			
22	8678-5	Spring Mount, Chute	1				
23	7726	Chute Hinge (2 x 11)	1				
24	7755-1	Chute Lip, Top	1				
25	7755-2	Chute Lip, Bottom	1				
26	7794-2	Discharge Chute W/Spring Mount (C23i / Wide) (Includes Items # 22-25, F223 & F462)	1*				
27	8677	Extension Spring (1 x 6-1/16)	1				
28	5794-11	Discharge Chute W/Spring Mount (C23i / Narrow) (Includes Items # 22, 29-31 & F223)	1**				
29	5726	Chute Hinge (2 x 8)	1				
30	5755-2	Chute Lip, Top	1				
31	5755-3	Chute Lip, Bottom	1				



# GHS GROUP (10.0)

ITEM NO.	PART NO.	DESCRIPTION	NO. REQ'D	ITEM NO.	PART NO.	DESCRIPTION	NO. REQ'D
<b>Delivery Chute Assembly</b>				<b>Fasteners</b>			
1	5515-4	Elbow Delivery Spout	1	F002		10-24 Keps Nut	2
2	5592-24	Backing Plate, Grass-Pak® Switch	1	F004		1/4-20 Keps Nut	4
3	5592-23	Grass-Pak® Housing Spacer	1	F005		1/4-20 ESNA Nut	2
4	5578	Rear Clip, Chute Mount	1	F009		5/16-18 Whiz Locknut	6
5	5577	Side Clip, Chute Mount	2	F013		3/8-16 Whiz Locknut	2
6	7504-7	Hinge (4")	1	F023		10-24 ESNA Nut	2
7	7504-10	Hinge Spacer	1	F032		1/4-20 x 3/4 Hex Bolt	4
8	6530-7	Body Chute	1	F039		3/8-16 x 1-1/4 Hex Bolt	2
9	5578-10	Front Clip, Chute Mount	1	F087		#10 x 7/8 Fender Washer	1
10	8511-1	Delivery Chute W/Clips (Includes Items # 4, 5, 9, F362 & F411)	1	F091		5/16-18 x 5/8 Hex Bolt	4
				F129		10-24 x 1/2 PTHMS	2
				F178		1/4 x 1 Fender Washer	4
				F185		1/4 Internal Star Lock Washer, SS	4
				F208		5/16-18 x 2-1/4 Hex Bolt	1
				F223		3/16 x 5/16 Semi-Tube Rivet	14
				F350		1/4-20 LP Nylock	4
				F362		A/A62D Alum. Pop Rivet (3/16D x 13/32L)	2
				F411		3/16 Bulbex Rivet	6
				F420		5/16-18 x 1-1/4 Carriage Bolt	2
				F426		1/4-20 x 1/2 Carriage Bolt	6
				F462		3/16 x .468 (+/- .010) Semi-Tube Rivet	4
				F551		5/16-18 Flange Top Lock Nut	6
				F577		10-24 x 5/8 Carriage Bolt	2
				F651		5/16-18 x 5/8 Carriage Bolt, Gr 2	3
				F737		1/4-20 Center Lock Nut, GR B	4
				F741		1/4-20 x 3/4 Undercut Stainless Phillips Flat Head Screw	4
<b>Blower Assembly</b>				* Used with DC48 deck only			
11	6545-16	Blower Wheel	1	** Used with all other decks			
12	6349-9	Flanged Bearing (1")	1				
13	6545-8	Blower Spacer	1				
14	4349-14	Flanged Bearing (1") Machine Flat	1				
15	5526-10	Receiver Cone	1				
16	7275-3	U-Joint Tube, Splined	1				
17	6543-13	Blower Faceplate Ring	3				
18	5794-8	Fixed Chute	1				
19	6543-16	Blower Weldment, Top (Includes Items # F178, F185, F350, F737 & F741)	1				
20	6543-17	Blower Weldment, Bottom (Includes Items # F178, F185, F350, F737 & F741)	1				
<b>Deck Chute Assemblies</b>							
21	8678-5	Spring Mount, Chute	1				
22	7726	Chute Hinge (2 x 11)	1				
23	7755-1	Chute Lip, Top	1				
24	7755-2	Chute Lip, Bottom	1				
25	7794-2	Discharge Chute W/Spring Mount (C23i / Wide) (Includes Items # 21-24, F223 & F462)	1*				
26	8677	Extension Spring (1 x 6-1/16)	1				
27	5794-11	Discharge Chute W/Spring Mount (C23i / Narrow) (Includes Items # 21, 28-30 & F223)	1**				
28	5726	Chute Hinge (2 x 8)	1				
29	5755-2	Chute Lip, Top	1				
30	5755-3	Chute Lip, Bottom	1				

# GHS GROUP (10.0)

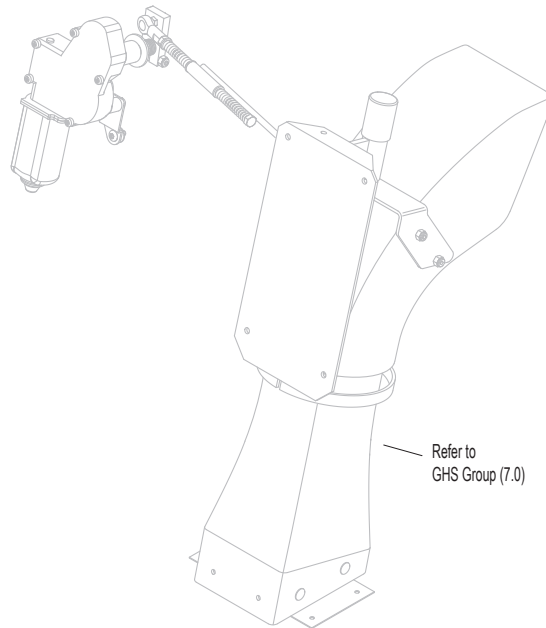
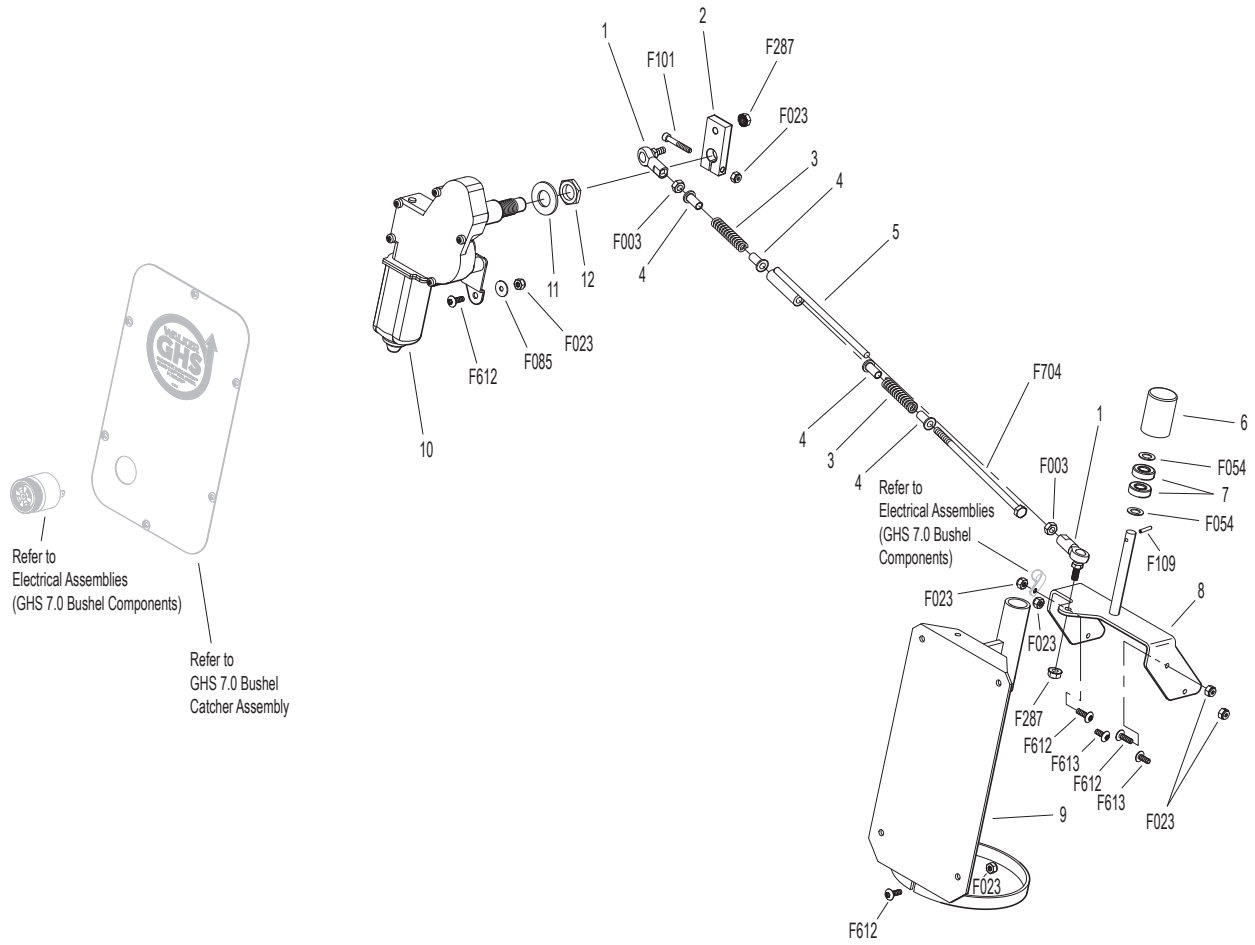


Model C23i Beginning S/N 193504  
 Use only genuine **Walker**® replacement parts.

## GHS POWERFIL® ASSEMBLY (7.0)

ITEM NO.	PART NO.	DESCRIPTION	NO. REQ'D	ITEM NO.	PART NO.	DESCRIPTION	NO. REQ'D
<b>7.0 GHS Powerfil® Assembly</b>				<b>Fasteners</b>			
1	5552	Ball Joint (1/4-28)	2	F003		1/4-28 Hex Nut	2
2	5554	Actuator Arm	1	F023		10-24 ESNA Nut	10
3	5553-1	Compression Spring (1/2 x 2)	2	F054		AN960616 Washer	2
4	5553-3	Bushing, Powerfil® Actuator	4	F085		3/16 Rivet Backup Washer	1
5	5558-2	Powerfil® Actuator Rod	1	F101		10-24 x 1-1/4 SHC Screw	1
	5549	Actuator Rod Assembly (Includes Items # 1, 3-5, F003, F287 & F704)	*	F109		1/8 x 5/8 Roll Pin	1
6	5551-3	Bearing Cap, Powerfil®	1	F287		1/4-28 Keps Nut	2
7	5551-1	Pivot Bearing (#S3PP)	2	F612		10-24 x 5/8 Truss Head Torx	7
8	5518-6	Pivot, Delivery Spout	1	F613		10-24 x 1/2 Truss Head Torx	2
9	5517-2	Pivot Mount	1	F704		1/4-28 x 6-1/2 Hex Bolt Grade 5, Clear Zinc	1
10	5519-5	Actuator Motor (12V) (Includes Items # 11 & 12)	1	* Service Part Only			
11	5519-2	Motor Mount Washer	*				
12	5519-3	Motor Mount Nut (5/8-24)	*				

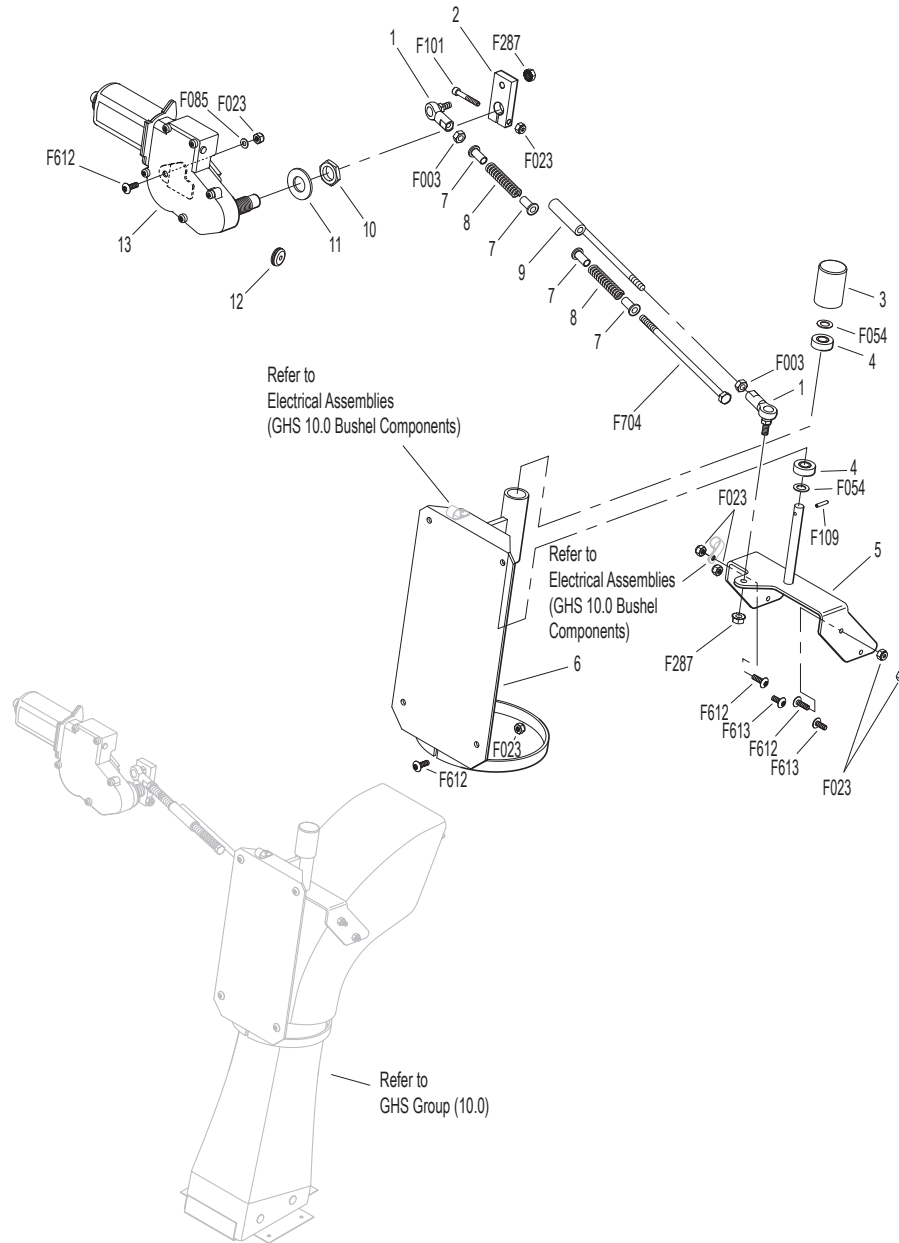
# GHS POWERFIL® ASSEMBLY (7.0)



# GHS POWERFIL® ASSEMBLY (10.0)

ITEM NO.	PART NO.	DESCRIPTION	NO. REQ'D	ITEM NO.	PART NO.	DESCRIPTION	NO. REQ'D
<b>10.0 GHS Powerfil® Assembly</b>				<b>Fasteners</b>			
1	5552	Ball Joint (1/4-28)	2	F003		1/4-28 Hex Nut	2
2	5554	Actuator Arm	1	F023		10-24 ESNA Nut	10
3	5551-3	Bearing Cap, Powerfil®	1	F054		AN960616 Washer	2
4	5551-1	Pivot Bearing (#S3PP)	2	F085		3/16 Rivet Backup Washer	1
5	5518-6	Pivot, Delivery Spout	1	F101		10-24 x 1-1/4 SHC Screw	1
6	5517-2	Pivot Mount	1	F109		1/8 x 5/8 Roll Pin	1
7	5553-3	Bushing, Powerfil® Actuator	4	F287		1/4-28 Keps Nut	2
8	5553-1	Compression Spring (1/2 x 2)	2	F612		10-24 x 5/8 Truss Head Torx	7
9	5558-2	Powerfil® Actuator Rod	1	F613		10-24 x 1/2 Truss Head Torx	2
	5549	Actuator Rod Assembly (Includes Items # 1, 7-9, F003, F287 & F704)	*	F704		1/4-28 x 6-1/2 Hex Bolt Grade 5, Clear Zinc	1
10	5519-3	Motor Mount Nut (5/8-24)	*	* Service Part Only			
11	5519-2	Motor Mount Washer	*				
12	5976-2	Grommet (3/16 x 3/4)	1				
13	5519-5	Actuator Motor (12V) (Includes Items # 10 & 11)	1				

# GHS POWERFIL® ASSEMBLY (10.0)



# GHS 7.0 BUSHEL CATCHER ASSEMBLY

ITEM NO.	PART NO.	DESCRIPTION	NO. REQ'D	ITEM NO.	PART NO.	DESCRIPTION	NO. REQ'D
<b>Upper Baffle Screen Assembly (Removable)</b>				40	7607-8	Powerfil® Cover Plate	1
1	7512-12	Removable Screen (3/16 Hole) (Includes Items # 2, F190 & F617)	1**	41	7608-4	Hinge Plate, RH	1
2	7506	Knob / Threaded Insert (10-24)	2	42	8155-8	7.0 Gas Spring Cover, RH	1
3	7509-7	Channel Top, LH	1	43	7607-14	Catcher Door Arm, RH	1
4	8606-2	Channel Bottom	2	44	7584-3	Reinforcing Strap	1
5	6856-1	Edge Molding (21-3/4")	1	45	5801-4	Decal Plate, Round	2
6	6507	Screen Seal (23-1/4")	1	46	7608-5	Door Arm Stop	2
7	7505	Mustache Spring	2	<b>5598-2 Optional Dump Bag (Not Shown)</b>			
8	7509-6	C-Channel With Spring (Includes Items # 7 & F340)	1	May be ordered as an option. Contact your Walker dealer.			
9	7509-8	Channel Top, RH	1	<b>Fasteners</b>			
<b>7.0 Exhaust Deflector Door Assembly</b>					F020	5/16-18 ESNA Nut	2
10	7607-3	Upper Door Seal	1	F023	10-24 ESNA Nut		28
11	7510-4	7.0 Catcher Box Door (Includes Frame) (Includes Items # 10, 12, 13, 15, F085, F411 & F649)	1	F029	1/4-20 x 1/2 Hex Bolt		2
12	5583	Handle	1	F031	1/4-20 x 5/8 Hex Bolt		2
13	7607-6	Lower Door Stiffener (7.0)	1	F049	5/16 SAE Washer		4
14	8607-8	Door Guide	1	F050	1/4 SAE Washer		4
15	7607-5	Upper Door Stiffener	1	F079	A/A66D Aluminum Pop Rivet		4
<b>GHS 7.0 Bushel Catcher Assembly</b>					F085	3/16 Rivet Backup Washer	12
16	7503-8	Center Strap (7.0)	1	F094	8-32 x 1/2 PTHMS		6
17	7503-6	Upper Frame Doubler (7.0)	2	F190	#10 Internal Star Lock Washer		2
18	7503-5	Lower Frame Doubler (7.0)	2	F196	1/4-20 x 1 PPHMS, SS		4
19	7503-4	Outside Box Strap (7.0)	2	F230	1/4-20 x 1-1/4 PPHMS, SS		4
20	8608-11	Catcher Door Finger	1	F242	1/4-20 x 7/8 PPHMS, SS		8
21	8608-4	Center Frame Doubler	1	F275	5/16-18 x 2 Hex Bolt		2
22	7503-11	Catcher Mount	1	F340	Rivet, Aluminum		4
23	7610-4	Catcher Dump Flap Spacer (7.0)	1	F351	Aluminum Pop Rivet		6
24	7610-9	Catcher Dump Flap (7.0)	1	F360	1/4-20 x 3/8 Hex Bolt		2
25	8610-3	Backing Plate / Dump Flap	1	F390	1/4-20 x 7/8 Carriage Bolt		4
26	7620-3	Pivot Bushing (1/2 x 9/16)	4	F411	3/16 Bulbex Rivet		32
27	7607-7	Bushing	2	F442	1/4-20 x 5/8 PTHMS		2
28	7608-3	Hinge Plate, LH	1	F524	3/16 x 3/8 Aluminum Rivet, Black		8
29	7607-15	Catcher Door Arm, LH	1	F540	1/4-20 x 1-3/4 PPHMS, SS		1
30	8155-7	7.0 Gas Spring Cover, LH	1	F551	5/16-18 Flange Top Lock Nut		2
31	5155-5	Gas Spring	2	F569	1/4-20 Flange Top Lock Nut		25
32	5155-13	10mm Ball Stud, 5/16-18 3/4 Thread	2	F612	10-24 x 5/8 Truss Head Torx		4
33	5523-6	Gas Spring Plate	2	F613	10-24 x 1/2 Truss Head Torx		10
34	5155-12	5/16 Ball Stud	2	F617	10-24 x 3/8 Truss Head Torx		4
35	5155-15	Box Support, Gas Spring	2	F618	10-24 x 3/4 Truss Head Torx		12
36	7532-1	Handle, Catcher Lift	2	F649	3/16 x .510/.625 Grip Range Rivet, SS		4
37	7511-6	Chute Cover	1	* Service Part Only			
38	7557-1	7.0 Wire Harness Channel	1	** This screen can be replaced by P/N 7512-13 Removable Screen (3/4" holes) for improved air flow performance in wet conditions.			
39	7510-3	7.0 Bushel Catcher Box	1				
	7502-6	7.0 Catcher W/Powerfil® (Includes Door)	*				



# GHS 10.0 BUSHEL CATCHER ASSEMBLY

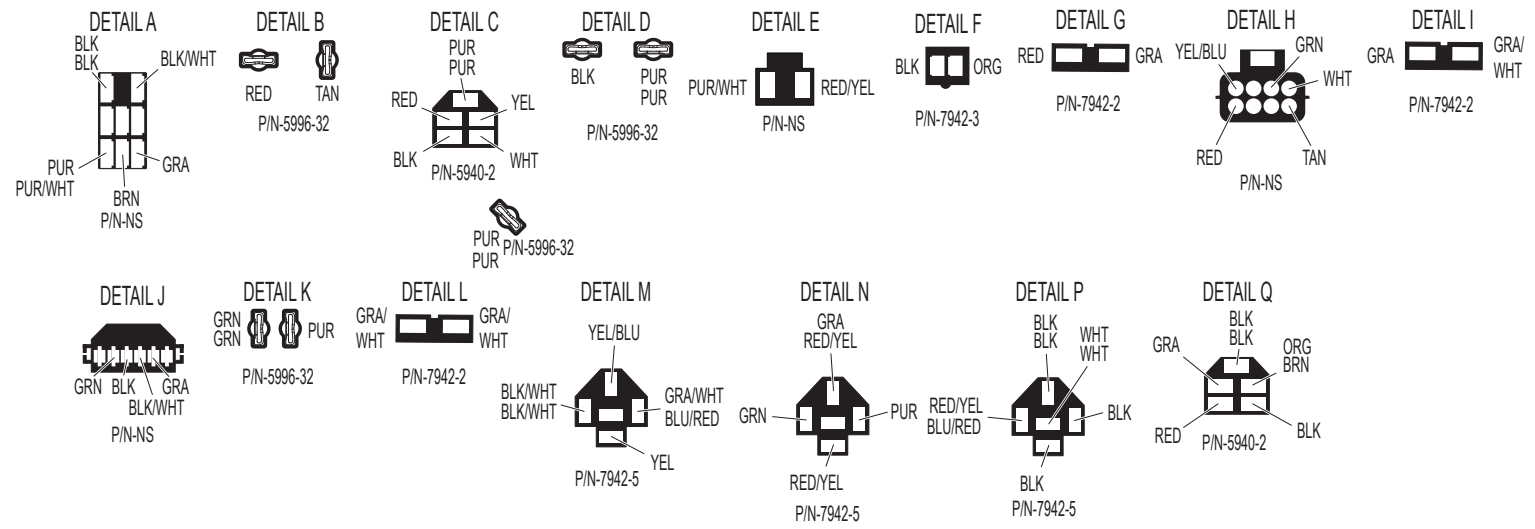
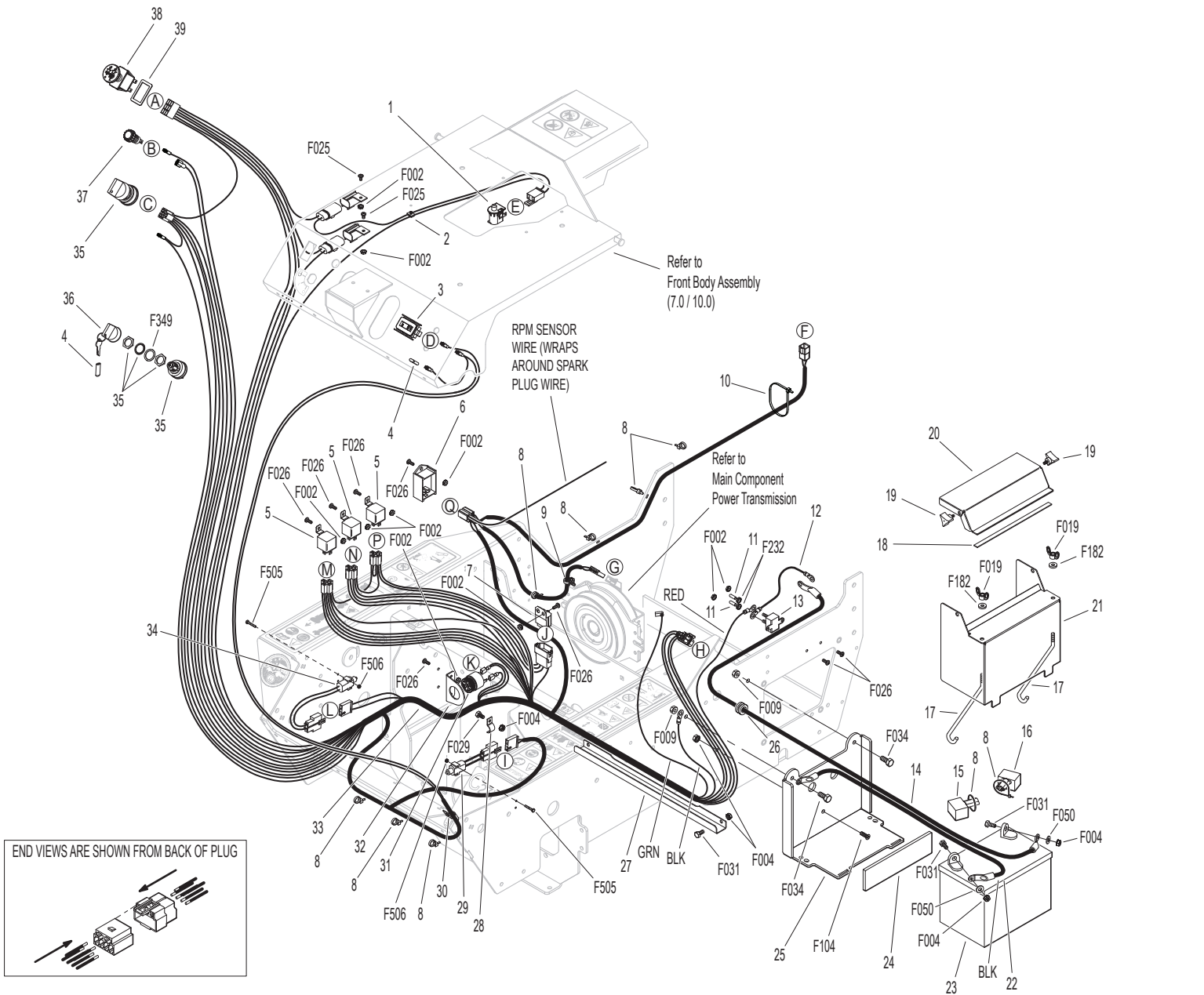
ITEM NO.	PART NO.	DESCRIPTION	NO. REQ'D	ITEM NO.	PART NO.	DESCRIPTION	NO. REQ'D
<b>Upper Baffle Screen Assembly (Removable)</b>				46	5976-2	Grommet (3/16 x 3/4)	1
1	7512-8	Removable Screen (3/16 Hole) (Includes Items # 2, 5, F190 & F617)	1**	47	5977-3	Grommet (9/16)	1
2	7506	Knob / Threaded Insert (10-24)	2	48	8602-3	10.0 Catcher W/O Powerfil®, Gray (Includes Door)	*
3	8606-3	Channel Top, LH	1		8602-4	10.0 Catcher W/Powerfil®, Gray (Includes Door)	*
4	8606-2	Channel Bottom	2		8610-5	10.0 Bushel Catcher Box, Gray	*
5	7856-1	Edge Molding (26")	1	49	8607-9	Powerfil® Cover Plate	1
6	7507	Screen Seal (27-1/2)	1	50	8155-2	Gas Spring Cover, RH	1
7	7505	Mustache Spring	2	51	8608-8	Hinge Plate, RH	1
8	8606	C-Channel (10.0)	1	52	8608-9	Torsion Bar	1
	8606-20	C-Channel With Spring (10.0) (Includes Items # 7, 8 & F340)	*	<b>5598-2 Optional Dump Bag (Not Shown)</b> May be ordered as an option. Contact your Walker dealer.			
9	8606-4	Channel Top, RH	1	<b>Fasteners</b>			
<b>10.0 Exhaust Deflector Door Assembly</b>					F020	5/16-18 ESNA Nut	2
10	8607-16	Upper Seal Support	1		F023	10-24 ESNA Nut	29
11	8607-17	Upper Door Seal	1		F024	5/16-24 Jam Nut	4
12	8607-18	Backup Plate	1		F029	1/4-20 x 1/2 Hex Bolt	8
13	8512-4	10.0 Catcher Box Door, Gray (Includes Items # 10-14, 16, 17, F085, F411, F649 & F654)	1		F032	1/4-20 x 3/4 Hex Bolt	2
14	5583	Handle	1		F049	5/16 SAE Washer	8
15	8607-1	Door Mount, LH	1		F050	1/4 SAE Washer	2
16	8607-12	Upper Door Stiffener	1		F068	1/8 x 1 Cotter Pin	2
17	8607-7	Lower Door Stiffener	1		F079	A/A66D Aluminum Pop Rivet	5
18	8607-8	Door Guide	1		F085	3/16 Rivet Backup Washer	10
19	8607-2	Door Mount, RH	1		F094	8-32 x 1/2 PTHMS	6
<b>GHS 10.0 Bushel Catcher Assembly</b>					F190	#10 Internal Star Lock Washer	2
20	8608-13	Center Strap	1		F195	1/4-20 x 3/4 PPHMS, SS	4
21	8608-3	Upper Frame Doubler	2		F196	1/4-20 x 1 PPHMS, SS	4
22	8608-1	Outside Box Strap	2		F208	5/16-18 x 2-1/4 Hex Bolt	2
23	8608-2	Lower Frame Doubler	2		F230	1/4-20 x 1-1/4 PPHMS, SS	4
24	8608-4	Center Frame Doubler	1		F242	1/4-20 x 7/8 PPHMS, SS	8
25	8608-11	Catcher Door Finger	1		F340	Rivet, Aluminum	4
26	8610-8	Catcher Dump Flap	1		F351	Aluminum Pop Rivet	6
27	8610-3	Backing Plate, Dump Flap	1		F360	1/4-20 x 3/8 Hex Bolt	2
28	7584	Reinforcing Strap	1		F390	1/4-20 x 7/8 Carriage Bolt	4
29	5103-5	Pivot Bushing Inner	2		F411	3/16 Bulbex Rivet	21
30	5801-4	Decal Plate, Round	2		F456	5/16-18 x 3/4 SBH Cap Screw, SS	4
31	7620-3	Pivot Bushing (1/2 x 9/16)	2		F524	3/16 x 3/8 Aluminum Rivet, Black	8
32	8608-7	Hinge Plate, LH	1		F540	1/4-20 x 1-3/4 PPHMS, SS	1
33	5103-7	Outside Torsion Bushing	2		F551	5/16-18 Flange Top Lock Nut	4
34	8607-4	Upper Arm	2		F568	10-24 Flange Top Lock Nut	1
35	5214-12	Ball Joint (5/16-24)	4		F569	1/4-20 Flange Top Lock Nut	27
36	5155-12	5/16 Ball Stud	2		F612	10-24 x 5/8 Truss Head Torx	8
37	5155-4	Gas Spring	2		F613	10-24 x 1/2 Truss Head Torx	11
38	8155-1	Gas Spring Cover, LH	1		F617	10-24 x 3/8 Truss Head Torx	4
39	8607-3	Lower Arm	2		F618	10-24 x 3/4 Truss Head Torx	6
40	5103-6	Pivot Bushing Outer	2		F649	3/16 x .510/.625 Grip Range Rivet, SS	4
41	5155-13	10mm Ball Stud, 5/16-18 3/4 Thread	2		F654	3/16 x .510/.625 Grip Range Rivet	7
42	5523-6	Gas Spring Plate	2	*	Service Part Only		
43	8608-10	Box Support, Gas Spring	2	**	This screen can be replaced by P/N 7512-11 Removable Screen (3/4" holes) for improved air flow performance in wet conditions.		
44	7532-1	Handle, Catcher Lift	2				
45	8117	Wire Harness Channel	1				



# ELECTRICAL ASSEMBLY

ITEM NO.	PART NO.	DESCRIPTION	NO. REQ'D	ITEM NO.	PART NO.	DESCRIPTION	NO. REQ'D
<b>Electrical Assembly</b>				<b>Fasteners</b>			
1	6104-11	Seat Switch, Comfort Seat (NO)	1	F002		10-24 Keps Nut	12
2	7834-2	Wire Saddle (2 Wires)	1	F004		1/4-20 Keps Nut	6
3	8990-1	Hourmeter (Global)	1	F009		5/16-18 Whiz Locknut	2
4	7854	Plastic Tip / Red	2	F019		1/4-20 ESNA Wing Nut	2
5	6941-9	Relay Switch 30/40 Amp	3	F025		10-24 x 3/8 PPHMS	2
6	4410-16	Soft Start Control	1	F026		10-24 x 1/2 PPHMS	10
7	7948-6	Time Delay Module	1	F029		1/4-20 x 1/2 Hex Bolt	1
8	5975-1	Cable Tie (18# x 3-3/4")	9	F031		1/4-20 x 5/8 Hex Bolt	4
9	7834-4	Wire Clamp .197-.354	1	F034		5/16-18 x 3/4 Hex Bolt	2
10	5975-3	Cable Tie (50# x 7")	1	F050		1/4 SAE Washer	2
11	8404-8	Plastic Cover, Red	2	F104		1/4-20 x 3/4 PFH Bolt	1
12	4940-11	Jumper Wire	1	F182		1/4 x 5/8 x 1/8 Washer	2
13	8941	Circuit Breaker (30 Amp) (Auto Reset/Sealed)	1	F232		10-32 Keps Nut	2
14	2940-2	Battery Cable (22")	1	F349		Washer .835 ID 1.122 OD, SS	1
15	5932	Battery Terminal Insul., Black (-)	1	F505		6-32 x 7/8 Hex Trim MS, SS	4
16	5933	Battery Terminal Insul., Red (+)	1	F506		6-32 Nylock Nut	4
17	5839	Hook Bolt	2	<b>NOTE:</b> Decals for this assembly are not shown here. Refer to <b>TRACTOR DECALS</b> , Page 2, for Decal listing and placement information.			
18	8790-1	Rubber Strip	1				
19	2703-5	Knob, 10-24 x 1/2	2				
20	4910-11	Cover Plate With Foam (Includes Item # 18)	1				
21	4910-10	Battery Hold Down Bracket	1				
22	4940-8	Starter Solenoid Cable	1				
23	7910-3	Battery (12V/350A CCA)	1				
24	5910-6	Battery Spacer Pad	1				
25	4910-9	Battery Mount	1				
26	4977	Grommet (1/2 x 13/16 x 3/16)	1				
27	6342-5	Wiring Channel	1				
28	5835-6	Clamp Half (5/8) .280 Hole	1				
29	5942-10	Safety Switch (NC), Delta Side Mount	1				
30	5835-1	Clamp Half (1/4)	1				
31	8536-2	Warning Horn Assembly	1				
32	8536-5	Warning Horn Bracket	1				
33	6940-27	Wire Harness Assembly	1				
34	5942-20	Safety Switch (NO)	1				
35	8960-15	Ignition Switch (With Keys) (Includes Items # 4, 36 & F349)	1				
36	8960-3	Key Set W/Umbrella	1				
37	8996-9	Red Indicator Light Assembly	1				
38	4950	PTO Switch	1				
39	4950-11	PTO Switch Spacer	1				

# ELECTRICAL ASSEMBLY

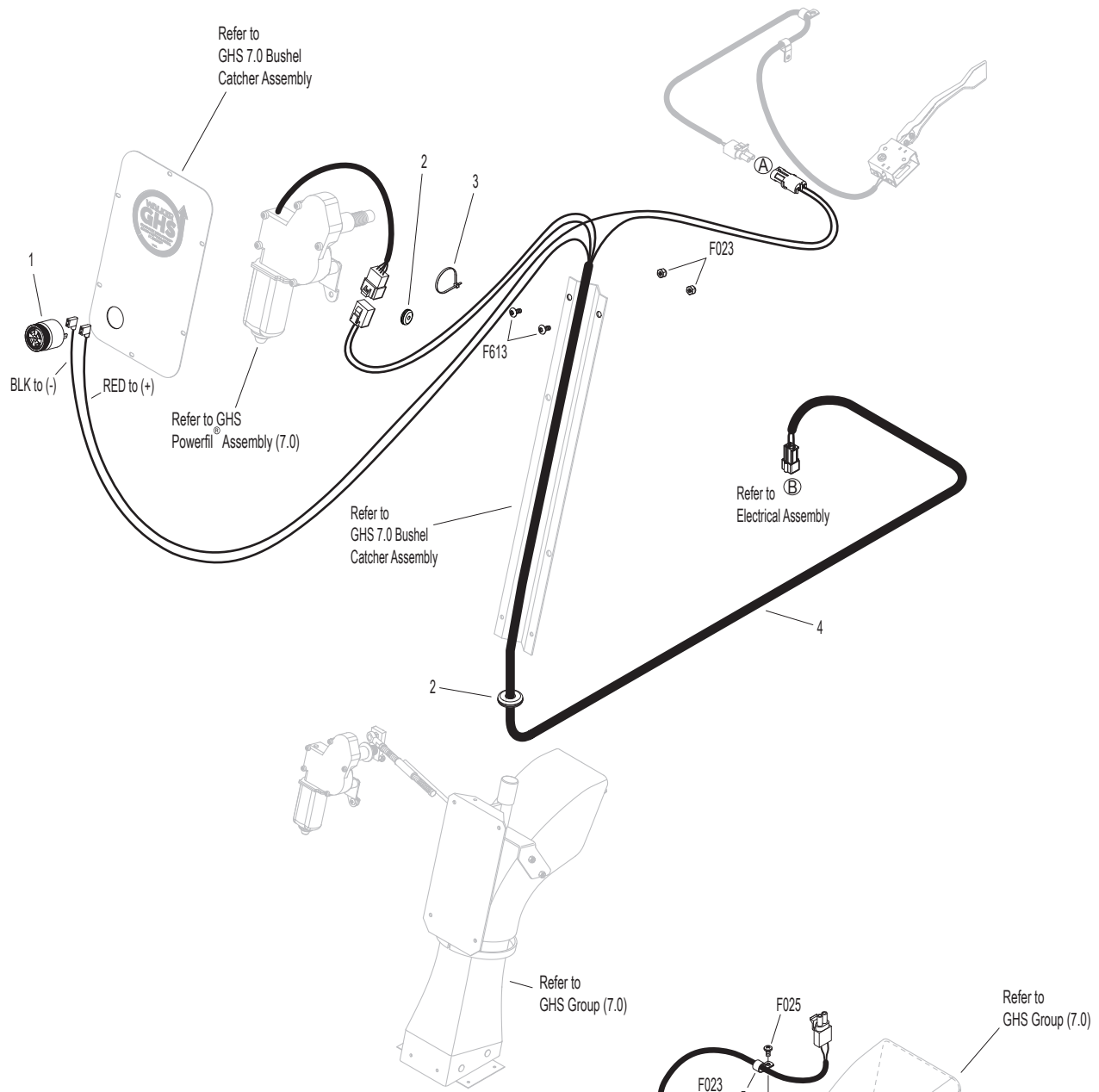


Model C23i Beginning S/N 193504  
Use only genuine **Walker**® replacement parts.

# ELECTRICAL ASSEMBLIES (GHS 7.0 BUSHEL COMPONENTS)

ITEM NO.	PART NO.	DESCRIPTION	NO. REQ'D	ITEM NO.	PART NO.	DESCRIPTION	NO. REQ'D
<b>Horn &amp; Harness Channel Assemblies</b>				<b>Fasteners</b>			
1	5536-2	Horn, Full Signal	*	F002		10-24 Keps Nut	1
2	5976-2	Grommet (3/16 x 3/4)	2	F023		10-24 ESNA Nut	3
3	5975-1	Cable Tie (18# x 3-3/4")	1	F025		10-24 x 3/8 PPHMS	1
<b>Harness &amp; Grass-Pak® Switch Assemblies</b>				F508		4-40 Keps Nut, SS	2
4	8950-4	Powerfil Wire Harness (7.0 / 10.0)	1	F612		10-24 x 5/8 Truss Head Torx	1
5	5833	Cable Clamp (1/4)	2	F613		10-24 x 1/2 Truss Head Torx	2
6	5594-7	Grass-Pak® Vane	1	F712		4-40 x 3/8 Hex Head, SS	2
7	5592-40	Grass-Pak® Switch Assembly	1	F713		Washer #4, SS	2
				*		Service Part Only	

# ELECTRICAL ASSEMBLIES (GHS 7.0 BUSHEL COMPONENTS)



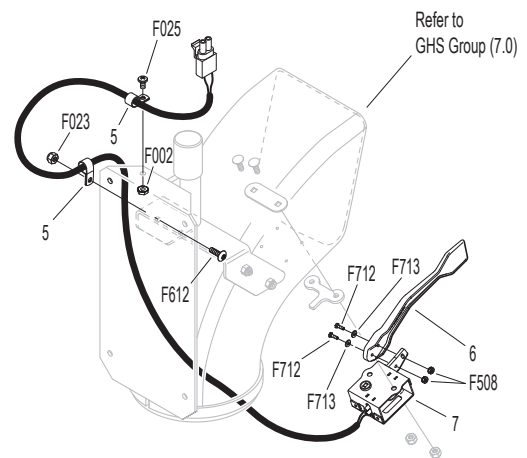
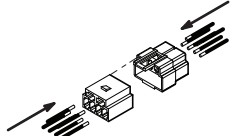
## DETAIL A



## DETAIL B



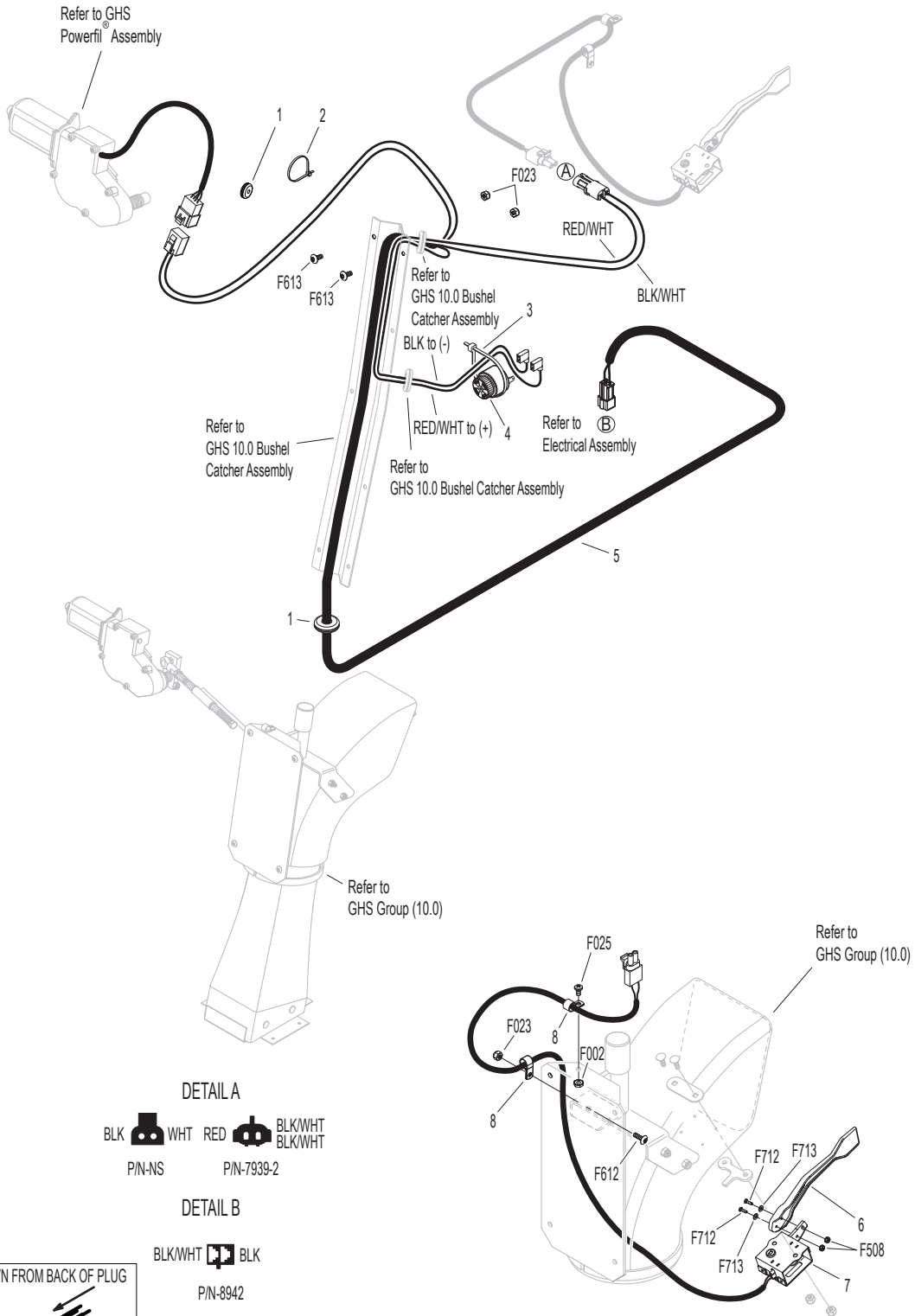
END VIEWS ARE SHOWN FROM BACK OF PLUG



# ELECTRICAL ASSEMBLIES (GHS 10.0 BUSHEL COMPONENTS)

ITEM NO.	PART NO.	DESCRIPTION	NO. REQ'D	ITEM NO.	PART NO.	DESCRIPTION	NO. REQ'D
<b>Horn &amp; Harness Channel Assemblies</b>				<b>Fasteners</b>			
1	5977-2	Grommet, Cut (1/8 x 3/8)	2	F002		10-24 Keps Nut	1
2	5975-1	Cable Tie (18# x 3-3/4")	1	F023		10-24 ESNA Nut	3
3	5975-3	Cable Tie (50# x 7")	1	F025		10-24 x 3/8 PPHMS	1
4	5536-2	Horn, Full Signal	*	F508		4-40 Keps Nut, SS	2
<b>Harness &amp; Grass-Pak® Switch Assemblies</b>				F612		10-24 x 5/8 Truss Head Torx	1
5	8950-4	Powerfil® Wire Harness (7.0 / 10.0)	1	F613		10-24 x 1/2 Truss Head Torx	2
6	5594-7	Grass-Pak® Shaft	1	F712		4-40 x 3/8 Hex Head, SS	2
7	5592-40	Grass-Pak® Switch Assembly	1	F713		Washer #4, SS	2
8	5833	Cable Clamp (1/4)	2	* Service Part Only			

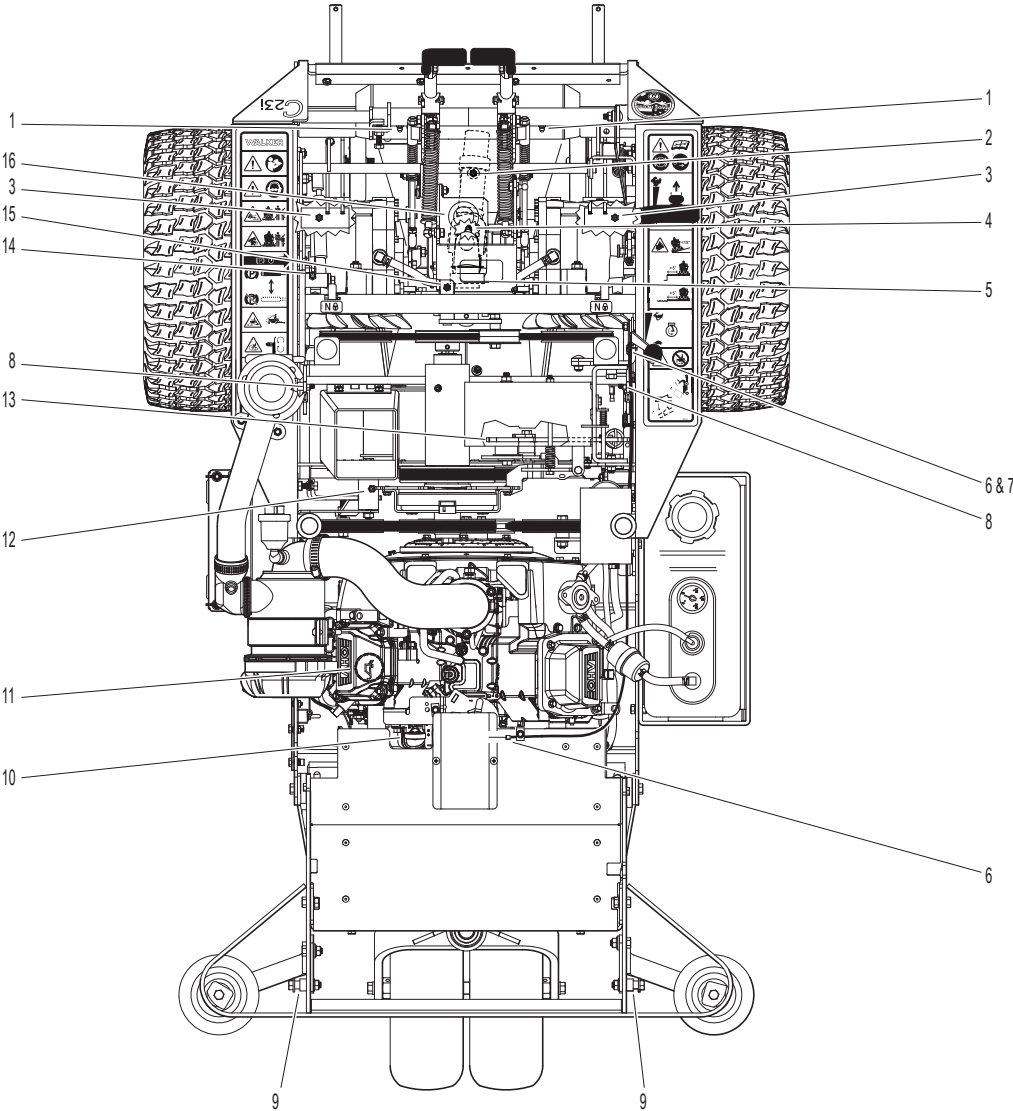
# ELECTRICAL ASSEMBLIES (GHS 10.0 BUSHEL COMPONENTS)



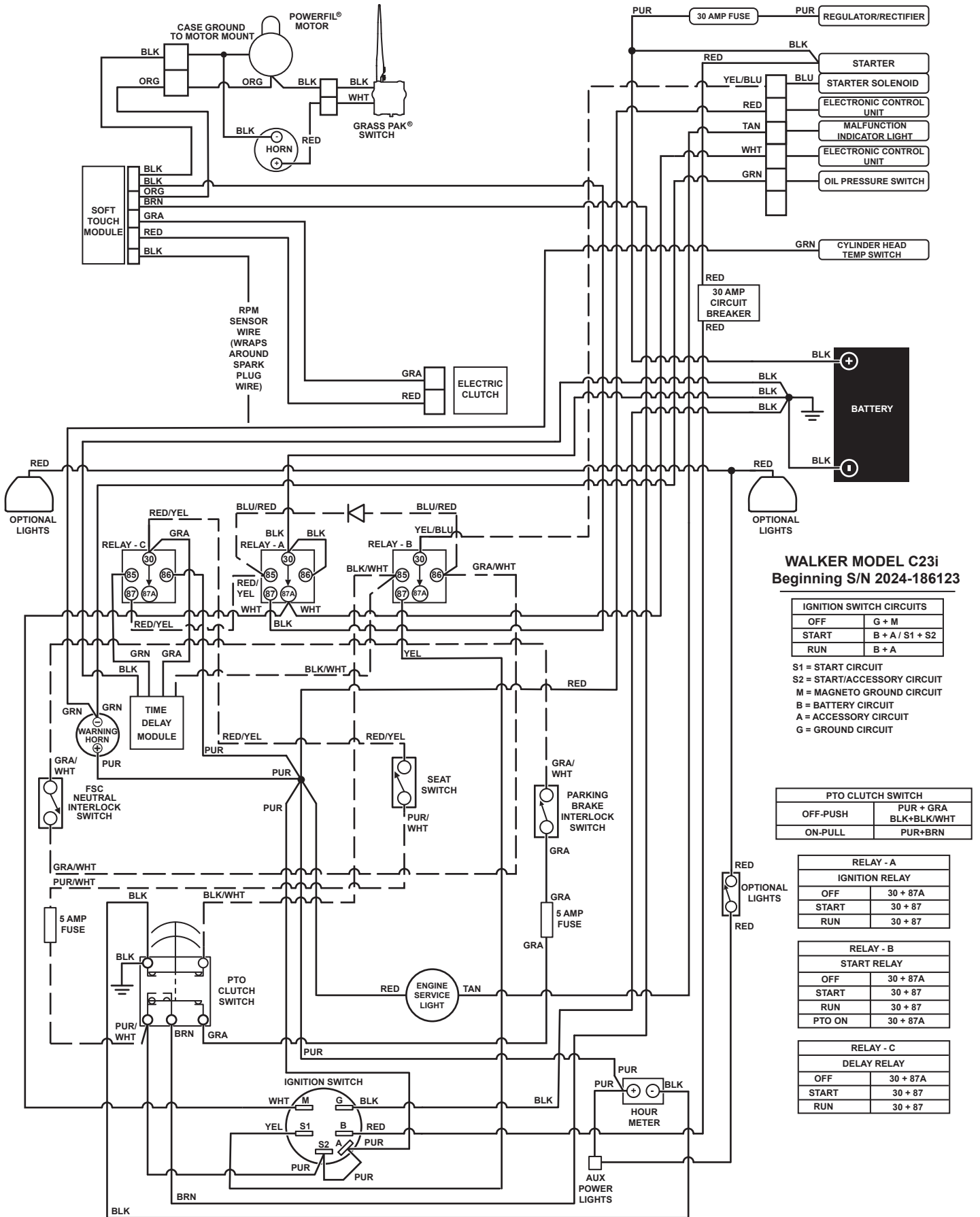
# LUBRICATION POINTS

ITEM NO.	LOCATION	LUBRICATION TYPE	NO. PLACES	ITEM NO.	LOCATION	LUBRICATION TYPE	NO. PLACES
<b>Lubrication Points</b>				13	Jackshaft Tensioner Lever*** (Grease Contact Point)	Grease	1
1	Steering Lever Pivot	Grease	2	14	Parking Brake Lever Pivot	Grease	1
2	Deck-to-PTO Coupling (Grease Spline Slide Area)	Grease	1	15	Ground Drive Idler Pivot	Grease	1
3	Deck Support Arm Pivot	Grease	2	16	Transaxle Oil Reservoir	Oil/20W-50	1
4	Universal Joint Tube Assembly	Grease*	1	* Grease every 25 hours.			
5	Universal Joint Quick Connect Spline (Grease Slide Area)	Grease	1	** Refer to C23i <b>Operator's Manual</b> for procedure for checking and changing oil in Engine Crankcase.			
6	Throttle Control Cable Ends	Oil	2	*** Contact point located under jackshaft. Access with jackshaft in raised position.			
7	Throttle Control Pivot	Oil	1	<b>NOTE:</b> See Model C23i <b>Operator's Manual</b> (6000-53) for proper lubrication intervals.			
8	Seat Panel Latch Pivot	Oil	2				
9	Catcher Hinge Point	Oil	2				
10	Engine Dipstick	Oil**	1				
11	Engine Oil Fill	Oil**	1				
12	Engine Idler Pivot	Grease	1				

# LUBRICATION POINTS



# WIRING SCHEMATIC



## WALKER MODEL C23i Beginning S/N 2024-186123

IGNITION SWITCH CIRCUITS	
OFF	G + M
START	B + A / S1 + S2
RUN	B + A

S1 = START CIRCUIT  
 S2 = START/ACCESSORY CIRCUIT  
 M = MAGNETO GROUND CIRCUIT  
 B = BATTERY CIRCUIT  
 A = ACCESSORY CIRCUIT  
 G = GROUND CIRCUIT

PTO CLUTCH SWITCH	
OFF-PUSH	PUR + GRA BLK+BLK/WHT
ON-PULL	PUR+BRN

RELAY - A IGNITION RELAY	
OFF	30 + 87A
START	30 + 87
RUN	30 + 87

RELAY - B START RELAY	
OFF	30 + 87A
START	30 + 87
RUN	30 + 87
PTO ON	30 + 87A

RELAY - C DELAY RELAY	
OFF	30 + 87A
START	30 + 87
RUN	30 + 87

# LIMITED WARRANTY FOR WALKER MODEL C23i RIDER MOWERS

## 1. WHAT THIS WARRANTY COVERS, AND FOR HOW LONG:

Walker Manufacturing company will, at its option, repair or replace, without charge, any part covered by this warranty which is found to be defective in material and/or workmanship within two (2) years\* after the date of sale to the original retail purchaser unless the product is used for rental purposes, in which case this warranty is limited to ninety (90) days. At Walker's request, customer will make the defective part available for inspection by Walker and/or return the defective part to Walker, transportation charges prepaid. All parts and components of the Walker Mower are covered by this warranty **except** the following components which are warranted separately by their respective manufacturers:

### Rehiko/Kohler Engine

The available warranties covering these items are furnished with each mower. Walker does not assume any warranty obligation, liability or modification for these items, which are covered exclusively by the stated warranty of the respective manufacturers noted above.

The Fulbat battery comes with a one (1) year warranty from the date of sale to the original retail purchaser. Warranty claims for the battery are administered through Walker Manufacturing.

★ Extended warranties are offered for the following powertrain components:

- Hydro-Gear offers a two (2) year or 2000 hour (whichever comes first) warranty for the ZT-3100 Hydrostatic transaxle which covers full cost of replacement up to 1000 hours of use, and after 1000 hours warranty coverage is prorated against 2000 hours. This warranty is administered through Walker Manufacturing.

## 2. WHAT THIS WARRANTY DOES NOT COVER:

- A. This warranty does not cover defects caused by depreciation or damage caused by normal wear, accidents, improper maintenance, improper use or abuse of the product, alterations, or failure to follow the instructions contained in the Owner's Manual for operation and maintenance.
- B. The customer shall pay any charges for making service calls and/or for transporting the mower to and from the place where the inspection and/or warranty work is performed.

## 3. HOW TO OBTAIN SERVICE UNDER THIS WARRANTY:

Warranty service can be arranged by contacting the dealer where you purchased the mower or by contacting Walker Manufacturing Company, 5925 East Harmony Road, Ft. Collins, CO 80528. Proof of the date of purchase may be required to verify warranty coverage.

## 4. WARRANTY LIMITATION:

- A. **THERE IS NO OTHER EXPRESS WARRANTY. ANY WARRANTY THAT MAY BE IMPLIED FROM THIS PURCHASE INCLUDING MERCHANTABILITY AND FITNESS FOR A PARTICULAR PURPOSE IS HEREBY LIMITED TO THE DURATION OF THIS WARRANTY AND TO THE EXTENT PERMITTED BY LAW ANY AND ALL IMPLIED WARRANTIES ARE EXCLUDED.** Some states do not allow limitations on how long an implied warranty lasts, so the above limitations may not apply to you.
- B. **WALKER WILL NOT BE LIABLE FOR ANY INCIDENTAL, CONSEQUENTIAL, OR SPECIAL DAMAGES AND/OR EXPENSES IN CONNECTION WITH THE PURCHASE OR USE OF THE MOWER.** Some states do not allow the exclusion or limitation of incidental or consequential damages, so the above limitation(s) or exclusion(s) may not apply to you.
- C. Only the warranty expressed in this limited warranty shall apply and no dealer, distributor, or individual is authorized to amend, modify, or extend this warranty in any way. Accordingly, additional statements such as dealer advertising or presentations, whether oral or written, do not constitute warranties by Walker, and should not be relied upon.
- D. This warranty gives you specific legal rights, and you may also have other rights which vary from state to state.



**WALKER**

**WALKER MFG. CO. • 5925 E. HARMONY ROAD, FORT COLLINS, CO 80528 • (970) 221-5614**  
**FORM NO. 062426      PRINTED IN USA      [www.walker.com](http://www.walker.com)      ©2026 WALKER MFG. CO**