

# WALKER

## Illustrated Parts Manual

# C19



Beginning S/N: 187255  
P/N 6000-43

# KEY TO ABBREVIATIONS USED IN THIS MANUAL

<i>Abbreviation</i>	<i>What it Represents</i>
° (Dimension)	Degrees (Angle)
" (Dimension)	inches
(-)	Negative (Polarity)
(+)	Positive (Polarity)
-1 (as deck style designation)	Standard (Aluminum) Gear Drive Deck
-2 (as deck style designation)	Heavy Duty (Cast Iron) Gear Drive Deck
-3 (as deck style designation)	Belt Drive Deck
AT	All-Terrain
CCW	Counter-clockwise
CW	Clockwise
D	Diameter
DC	Deck, Collection (number refers to size in inches)
DM	Deck, Mulching (number refers to size in inches)
DR	Deck, Rear Discharge (number refers to size in inches)
DS	Deck, Side Discharge (number refers to size in inches)
DU	Garlock (Bearing)
ESNA (Fastener)	Nylon Insert Locknut
FSC	Forward Speed Control
GA	Gauge
gal.	gallon
GHS	Grass Handling System
GR (Fastener)	Grade
HD	Heavy Duty
HP	Horse Power
ID	Identification or Inside Diameter
L	Length
LH	Left Hand (orientated with operator on seat)
LP	Low Profile
mm (Dimension)	millimeters
MS (Fastener)	Machine Screw
NS (as part number)	Item is not sold by Walker Manufacturing
OD	Outside Diameter
oz.	ounce
PFH (Fastener)	Phillips Flat Head
P/N	Part Number
PPH (Fastener)	Phillips Pan Head
PTH (Fastener)	Phillips Truss Head
PTO	Power Take-Off
QKS	Quick Slide
qt.	quart
RH	Right Hand (orientated with operator on seat)
SAE (Fastener)	Society of Automotive Engineers
SBH (Fastener)	Socket Button Head (Bolt)
SFH (Fastener)	Slotted Flat Head
SHC (Fastener)	Socket Head Cap
SHL (Fastener)	Shoulder (Bolt)
SM (Fastener)	Sheet Metal (Screw)
S/N	Serial Number
SQH (Fastener)	Square Head
SS (Fastener)	Stainless Steel
ST (Fastener)	Self-Tapping (Screw)
TOPS™	Transmission Oil Performance System
V	Volts
VLR	Very Low Restriction

**NOTE:** In some instances, combinations of abbreviations may be used (e.g. PPHMS - Phillips Pan Head Machine Screw).

# ILLUSTRATED PARTS LIST

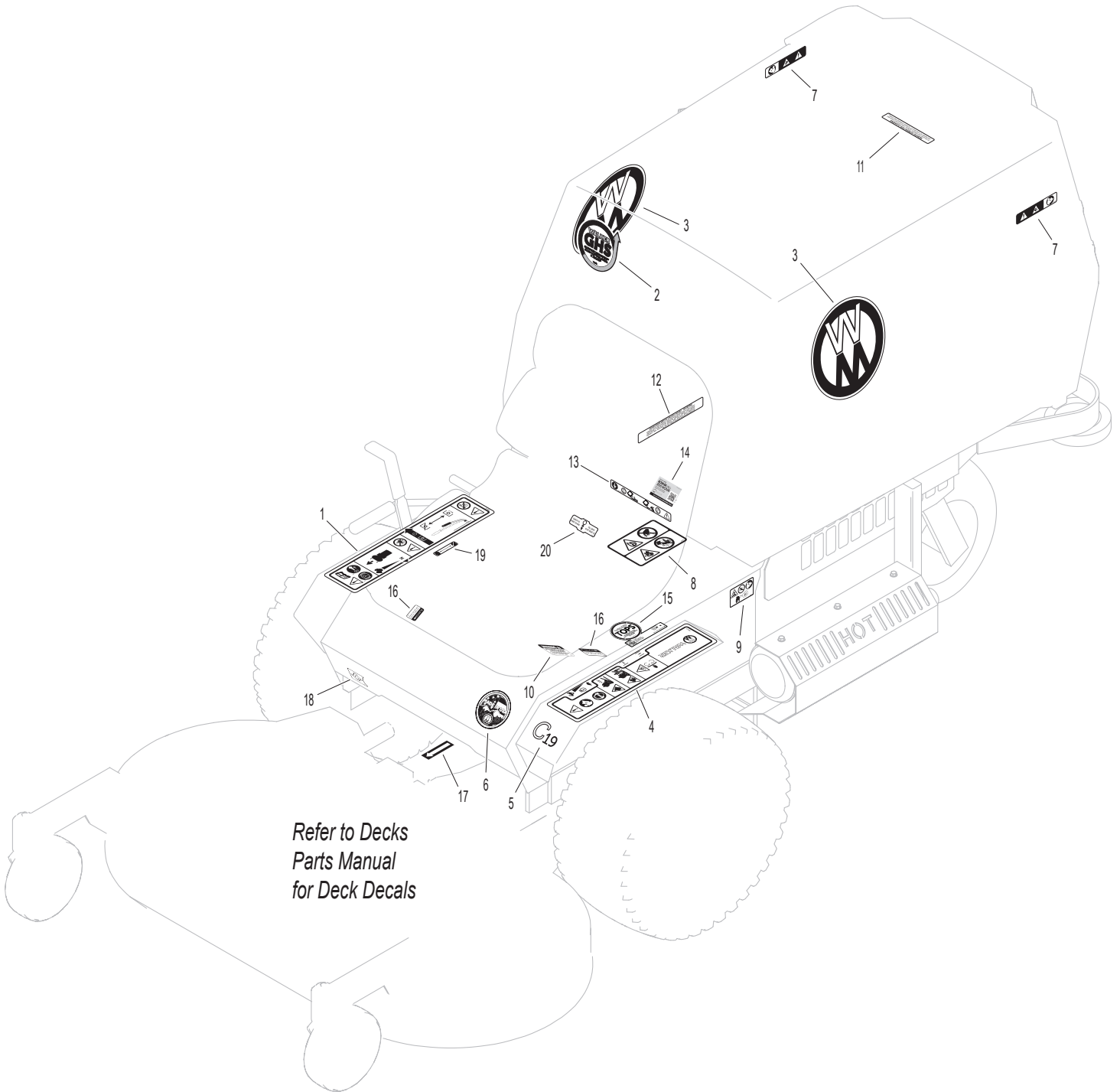
<i>Section of Tractor Covered</i>	<i>Page</i>	<i>Section of Tractor Covered</i>	<i>Page</i>
<b>Decals</b>		<b>Electrical Components</b>	
Tractor Decals .....	2	Electrical Assembly .....	34
<b>Body / Chassis Assemblies</b>		Electrical Assemblies (GHS 7.0 Bushel Components).....	36
Body / Chassis Assembly (7.0 / 10.0).....	4	Electrical Assemblies (GHS 10.0 Bushel Components).....	38
Rear Body Assembly (7.0) .....	6	<b>Maintenance</b>	
Rear Body Assembly (10.0) .....	8	Lubrication Points .....	40
<b>Tractor Components</b>		Wiring Schematic.....	42
Main Component Power Transmission .....	10	Maintenance And Service Record Sheet.....	43
Engine Group.....	12	<b>Warranty</b>	
Hydrostatic Ground Drive Assemblies.....	14	Limited Warranty.....	45
Steering Control Assemblies.....	16		
Throttle & Choke Control Assemblies.....	18		
Parking Brake Assembly .....	20		
GHS Group (7.0).....	22		
GHS Group (10.0).....	24		
GHS Powerfil® Assembly (7.0) .....	26		
GHS Powerfil® Assembly (10.0) .....	28		
GHS 7.0 Bushel Catcher Assembly.....	30		
GHS 10.0 Bushel Catcher Assembly.....	32		

# TRACTOR DECALS

ITEM NO.	PART NO.	DESCRIPTION	LOCATION	NO. REQUIRED
<b>Walker Product and Operation Decals</b>				
1	8600-33	RH Fender	Body, RH Near Seat	1
2	5813-2	Decal, 4" Grass-Pak Powerfil®	Powerfil® Cover Plate	1
3	5800-22	Walker (8" Round)	7.0 / 10.0 Bushel Catcher (one on each side)	2
4	8600-35	LH Fender	Body, LH Near Seat	1
5	8821-8	Decal, C19	Body	1
6	5856-1	Made in USA	Body	1
<b>Danger Decals Warning Decals Caution Decals</b>				
7	8600-10	Danger, Pinch Point	7.0 / 10.0 Bushel Catcher Mounting Frame Assembly (one on each side)	2
8	8600-4	Danger, Rotating Blower Blades	Body, Near Body Chute	1
9	8600-12	Danger, Engine Exhaust	Front Body, LH Side	1
10	5810-3	Decal, Hydro Warning	LH Gear Axle Drive Assembly	1
<b>Maintenance Decals</b>				
11	5869	Removable Screen	7.0 / 10.0 Bushel Catcher Removable Screen	1
12	5855	Important, Engine Cooling	Engine	1
13	8600-16	Front Body Closure	Rear Cross Member, Body	1
14	6895-103	Kohler 300 Hour Oil	Engine	1
15	5024-24	Decal, TOPS™	Oil Reservoir Tank	1
16	5810-1	Axle Oil Level	Gear Axle Drive Assemblies (one on each)	2
17	6875	PTO Alignment Arrow	Universal Joint Tube Assembly	1
18	6807-1	Oil Pressure	Body	1
19	8600-30	Parking Brake	Body, RH Side Below Seat	1
20	7827	Oil Level	Jackshaft Support	1

**NOTE:** All parts requiring decals are shipped with decals applied.

# TRACTOR DECALS



## BODY / CHASSIS ASSEMBLY (7.0 / 10.0)

ITEM NO.	PART NO.	DESCRIPTION	NO. REQ'D	ITEM NO.	PART NO.	DESCRIPTION	NO. REQ'D
<b>Seat Assembly</b>				36	5038-1	Axle Spacer Tube (6-5/8)	1
1	5103-3	Seat W/Switch	1	37	6307-7	Chassis Frame	1
2	7440-5	Shock Mount (1-1/4 x 3/4)	4	38	5075-3	LP Wheel & Tire (18 x 8.50-10)	2
<b>Rear Bumper Assembly</b>					5075-2	LP Tire (18 x 8.50-10)	*
3	7516-5	Catcher Pivot Bushing	2	5075-5	LP Wheel (10 x 7)	*	
4	5517-8	7.0 Rear Bumper	1	5033-6	Wheel & Tire (18 x 7.00-8)	**	
	7516	10.0 Rear Bumper	*	5030-6	Narrow Tire (18 x 7.00-8)	*	
5	7517-3	Catcher Pivot Plate	2	5031-2	Narrow Wheel (8 x 5-5)	*	
6	5162	Roller Wheel (5" Rubber)	2	5030-4	Tire Tube (18 x 8.50-8)	*	
<b>Body Assembly</b>				<b>Fasteners</b>			
7	7383-6	Body Latch Bracket, RH	1	F002	10-24 Keps Nut		2
8	7383-5	Body Latch Lever	1	F004	1/4-20 Keps Nut		8
9	7383-7	Body Latch Bracket, LH	1	F009	5/16-18 Whiz Locknut		10
10	7222	Extension Spring (1/4 x 3)	1	F014	3/8-16 ESNA Nut		4
11	5845	Rubber Bumper (1.50 x 1.25)	4	F016	1/2-13 Self-Locking Nut		1
12	6101-8	Front Body Engine Guard	1	F020	5/16-18 ESNA Nut		1
13	NS	Body ID Plate	1	F025	10-24 x 3/8 PPHMS		2
14	5989-12	Dome Plug (3/16)	1	F029	1/4-20 x 1/2 Hex Bolt		6
15	5989-10	Dome Plug (9/16)	1	F031	1/4-20 x 5/8 Hex Bolt		2
16	8118	Heat Deflector	1	F038	3/8-16 x 1 Hex Bolt		6
17	5989-3	Dome Plug (5/16)	4	F040	3/8-16 x 1-1/2 Hex Bolt		2
18	5989-4	Dome Plug (3/8)	3	F041	3/8-16 x 1-3/4 Hex Bolt		2
19	6100-52	Front Body	1	F042	3/8-16 x 2-1/4 Hex Bolt		2
20	5146	10mm Ball Stud	2	F050	1/4 SAE Washer		2
21	2145	Gas Spring Assembly (Includes Item # 20)	1	F051	3/8 SAE Washer		2
22	5180	Edge Molding, Lever Opening	2	F059	3/8 Wave Spring Washer		2
<b>Tilt-Up Latch Assembly***</b>				F093	5/16-18 x 1 Hex Bolt		1
23	5847	Plastic Tip	1	F157	1/2-20 x 1-1/4 Wheel Lug Bolt		8
24	5744-20	Spring Arm, Tilt-Up Latch	1	F206	#2 x 3/16 Drive Pin		2
25	5744-10	Spring Pivot Bushing	1	F241	.375 x .875 x .10 Washer		4
26	5744-15	Compression Spring (3/8 x 5/8)	1	F256	7/16 SAE Washer		2
27	5744-13	Mount Angle, LH	1	F292	1/2-13 x 8-1/2 Hex Bolt, GR 5		1
28	5744-12	Hook, Tilt-Up Latch	1	F341	Coil Roll Pin (7/64 x 9/16)		1
29	5744-14	Mount Angle, RH	1	F342	5/16 Conical Washer		2
<b>Chassis Assembly</b>				F413	5/16-24 x 5/16 Set Screw		2
30	5267-1	Retainer Collar (1") (Includes Item # F413)	1	F570	3/8-16 Flange Top Lock Nut		8
31	5270-1	Ball Bearing	2	F591	7/16-14 Flange Top Lock Nut		2
32	5420-2	Tail Wheel Fork	1	F592	7/16-14 x 1-1/8 Hex Bolt GR 5		2
33	8769-12	Bearing Cup (1/2 ID)	2	F637	Washer .835 x .505 x .125		2
34	5037-1	Bearing, Tail Wheel	2	F710	1/4-28 x 1/4 Set Screw (Knurled Cup), SS		1
35	5035	Tail Wheel & Tire Assembly (13 x 6.50-6)	1	<b>* Service Part Only</b>			
	5035-1	Tail Wheel Tire (13 x 6.50-6)	*	<b>** May be ordered as a factory-installed option or for dealer installation. Narrow Drive Tires are used when installing a 36" Deck. Contact your Walker dealer.</b>			
	5036	Tail Wheel & Hub (6 x 4.5)	*	<b>*** Complete Tilt-Up Latch Assembly Kit available by ordering kit # 5744-5.</b>			

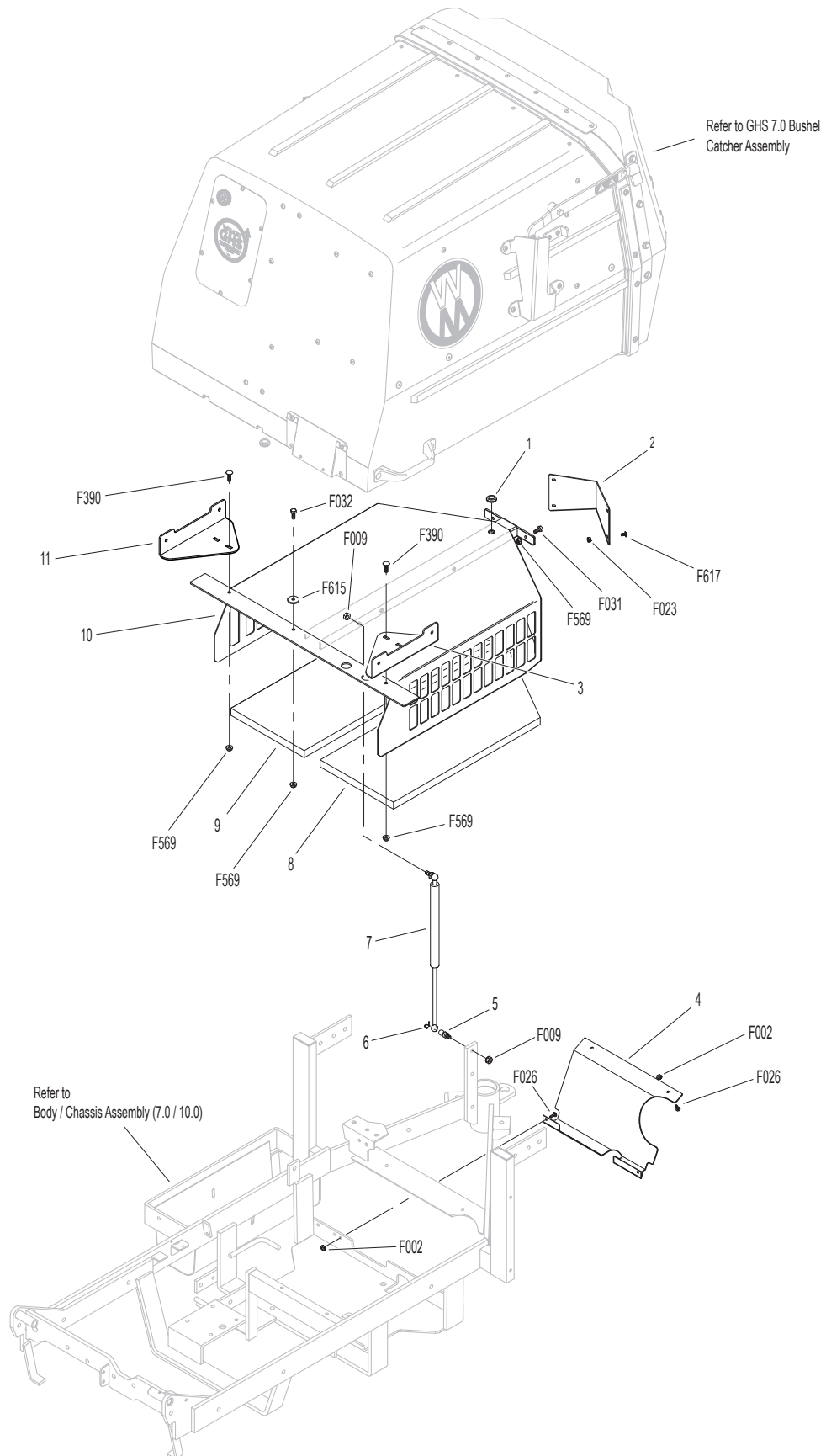


## REAR BODY ASSEMBLY (7.0)

ITEM NO.	PART NO.	DESCRIPTION	NO. REQ'D	ITEM NO.	PART NO.	DESCRIPTION	NO. REQ'D
<b>Rear Body Assembly</b>				<b>Fasteners</b>			
1	5976-2	Grommet (3/16 x 3/4)	1	F002		10-24 Keps Nut	4
2	5105-1	Rear Body Cover	1	F009		5/16-18 Whiz Locknut	2
3	8515-18	Catcher Handle Plate, RH	1	F023		10-24 ESNA Nut	4
4	8389-5	Splash Guard	1	F026		10-24 x 1/2 PPHMS	4
5	7146	13mm Ball Stud	2	F031		1/4-20 x 5/8 Hex Bolt	2
6	7147	Spring Clip	2	F032		1/4-20 x 3/4 Hex Bolt	1
7	7145	Gas Spring Assembly (Includes Items # 5 & 6)	1	F390		1/4-20 x 7/8 Carriage Bolt	2
8	7190-1	Insulation Foam Pad, LH	1	F569		1/4-20 Flange Top Lock Nut	5
9	7190-2	Insulation Foam Pad, RH	1	F615		1.0 x .255 x .125 Washer	1
10	5105-6	Rear Body, Catcher Support Frame	1	F617		10-24 x 3/8 Truss Head Torx	4
11	8515-17	Catcher Handle Plate, LH	1	<b>NOTE:</b> Rear Bumper Assembly is not shown here. Refer to <b>BODY / CHASSIS ASSEMBLY (7.0 / 10.0)</b> , Page 4.			



# REAR BODY ASSEMBLY (7.0)

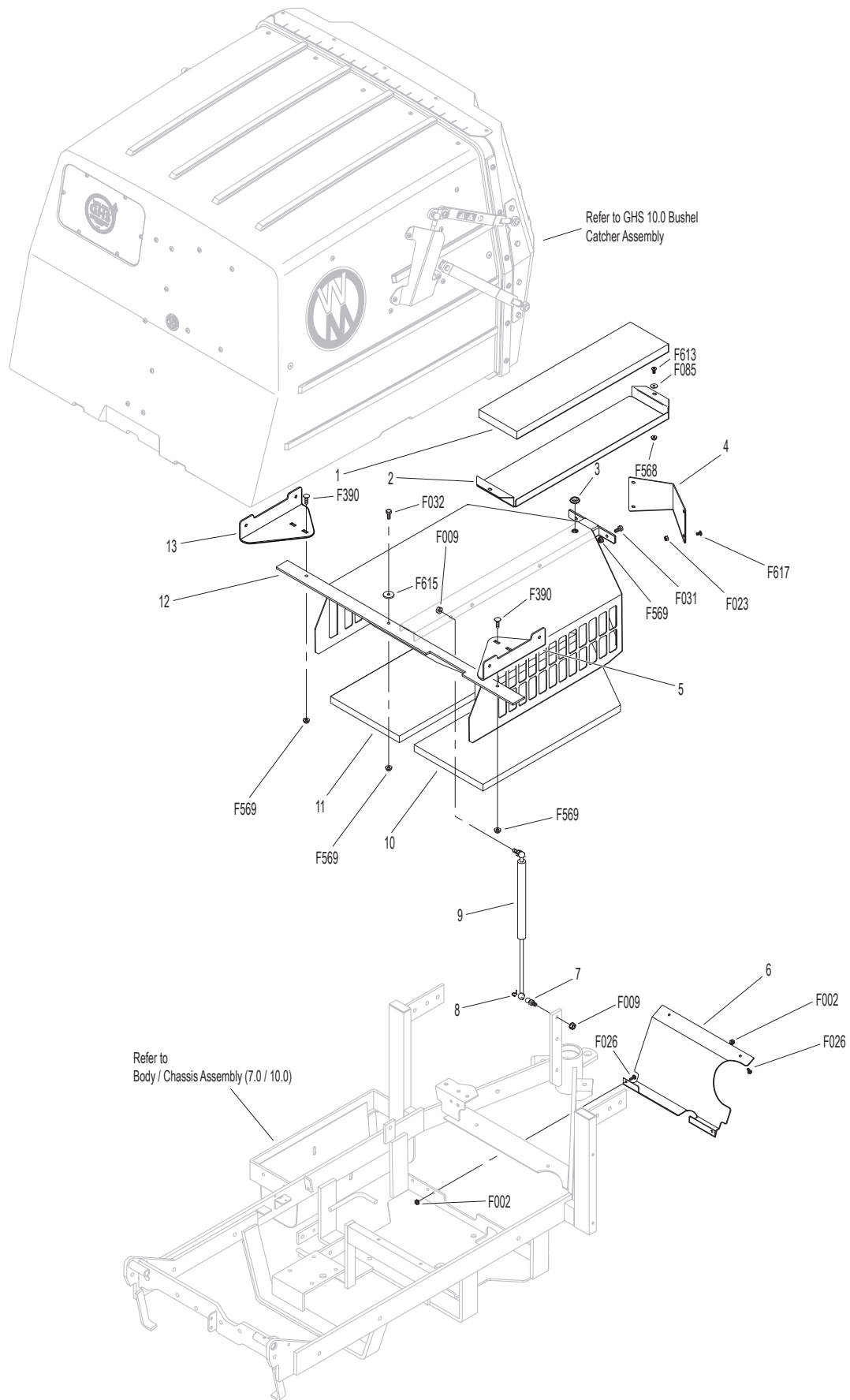


## REAR BODY ASSEMBLY (10.0)

ITEM NO.	PART NO.	DESCRIPTION	NO. REQ'D	ITEM NO.	PART NO.	DESCRIPTION	NO. REQ'D
<b>Rear Body Assembly</b>				<b>Fasteners</b>			
1	7190-3	Insulation Foam Pad (5 x 20)	1	F002		10-24 Keps Nut	4
2	8082	Heat Shield	1	F009		5/16-18 Whiz Locknut	2
3	5976-2	Grommet (3/16 x 3/4)	1	F023		10-24 ESNA Nut	4
4	5105-1	Rear Body Cover	1	F026		10-24 x 1/2 PPHMS	4
5	8515-18	Catcher Handle Plate, RH	1	F031		1/4-20 x 5/8 Hex Bolt	2
6	8389-5	Splash Guard	1	F032		1/4-20 x 3/4 Hex Bolt	1
7	7146	13mm Ball Stud	2	F085		3/16 Rivet Backup Washer	2
8	7147	Spring Clip	2	F390		1/4-20 x 7/8 Carriage Bolt	2
9	7145	Gas Spring Assembly (Includes Items # 7 & 8)	1	F568		10-24 Flange Top Lock Nut	2
10	7190-1	Insulation Foam Pad, LH	1	F569		1/4-20 Flange Top Lock Nut	5
11	7190-2	Insulation Foam Pad, RH	1	F613		10-24 x 1/2 Truss Head Torx	2
12	5105-7	Rear Body / Catcher Support Frame (10.0)	1	F615		1.0 x .255 x .125 Washer	1
13	8515-17	Catcher Handle Plate, LH	1	F617		10-24 x 3/8 Truss Head Torx	4

**NOTE:** Rear Bumper Assembly is not shown here. Refer to **BODY / CHASSIS ASSEMBLY (7.0 / 10.0)**, Page 4.

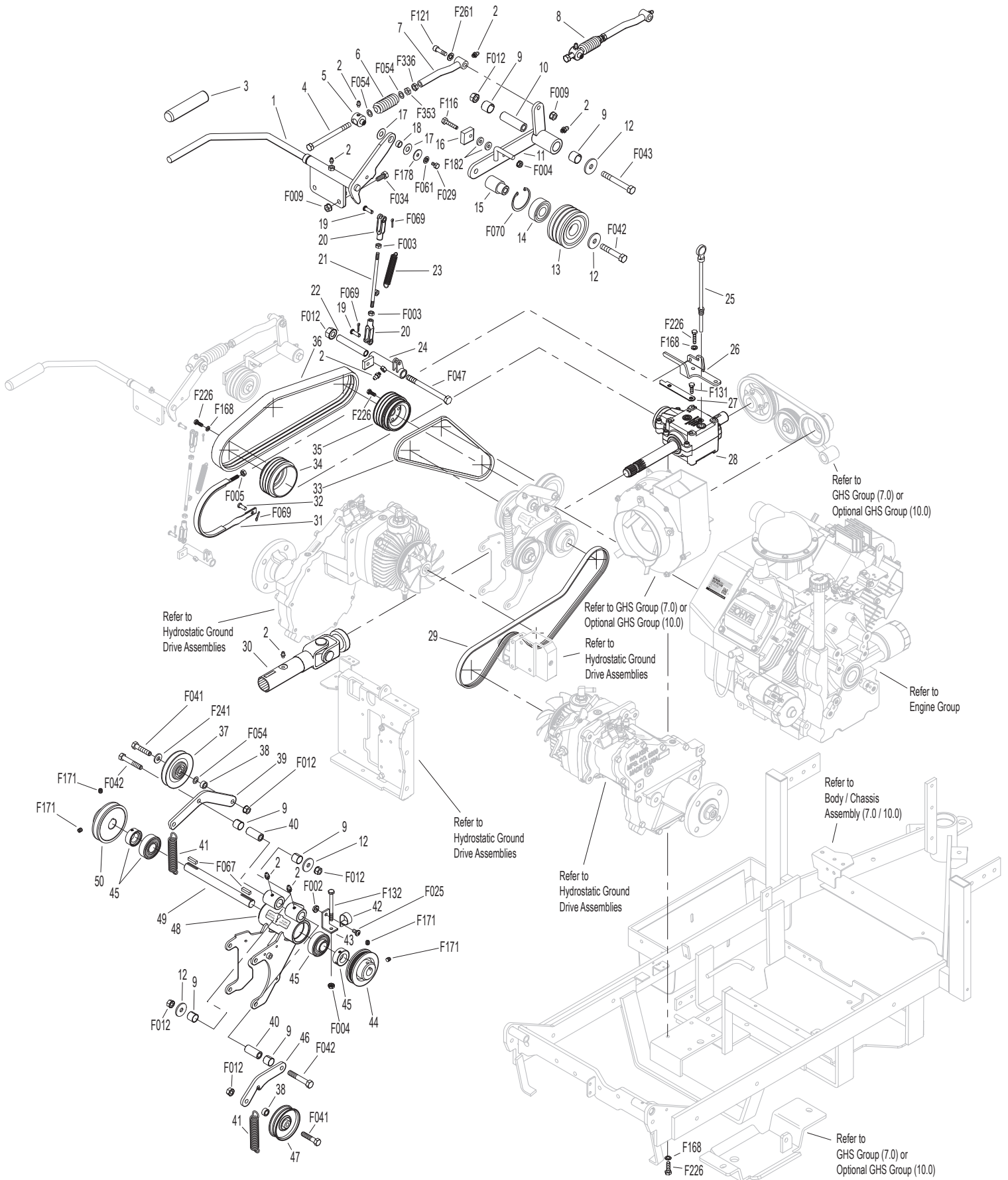
# REAR BODY ASSEMBLY (10.0)



# MAIN COMPONENT POWER TRANSMISSION

ITEM NO.	PART NO.	DESCRIPTION	NO. REQ'D	ITEM NO.	PART NO.	DESCRIPTION	NO. REQ'D
<b>Clutch Lever Assembly</b>				40	7201-4	Inner Race (1-1/2)	2
1	8358-3	Clutch Lever (Includes Items # 2 & 3)	1	41	5221-1	Extension Spring (3/4 x 5)	2
2	5830	Grease Fitting	8	42	7833	Cable Clamp (7/8 x 1/4)	1
3	4850	Handle Grip, Black	1	43	8539	Starter Relay Mount	1
4	7303-10	Clutch Actuator Bolt (3/8)	1	44	7241-2	Transmission Drive Pulley (3-1/4MV) (Includes Items # F067 & F171)	1
5	7380-5	Knuckle Joint (3/8 ID)	1	45	5268	Bearing W/Collar (3/4)	2
6	7226-10	Compression Spring (3/4 x 2-1/2)	1	46	8349	Transmission Belt Tightener Arm	1
7	8130-5	Pushrod, Clutch Actuator (Threaded Tube) (Includes Item # 2)	1	47	5245	Idler Pulley (3")	1
8	8130-10	Clutch Actuator Rod Assembly (Includes Items # 2, 4-7, F054, F336 & F353)	1	48	8394-6	Hydro Jackshaft Mount Assembly (Includes Items # 2, 9, 12, 40, 45, 49, F012, F042, F067 & F171)	1
9	7201-3	Fiberglide Bearing	6	49	8273-1	Jackshaft (3/4 x 8-1/8)	1
10	7201-5	Inner Race (2-1/4)	1	50	7240-7	Jackshaft Drive Pulley (3.3/3V) (Includes Items # F067 & F171)	1
11	8368	PTO Belt Tightener	1	<b>Fasteners</b>			
12	5841	Retainer Washer (3/8 x 1-1/4)	4	F002	10-24 Keps Nut	1	
13	8243-1	Clutch Idler Pulley	1	F003	1/4-28 Hex Nut	2	
	8243	Clutch Idler Pulley Assembly (Includes Items # 13-15 & F070)	*	F004	1/4-20 Keps Nut	2	
14	5265	Bearing (3/4)	1	F005	1/4-20 ESNA Nut	1	
15	8243-3	Hub, Idler Pulley	1	F009	5/16-18 Whiz Locknut	3	
16	8375	PTO Belt Tightener Stop	1	F012	3/8-16 Keps Nut	6	
17	7377	Plastic Washer (1 x .438 x .025)	2	F025	10-24 x 3/8 PPHMS	1	
18	7378	Pivot Bearing (7/16 x 9/16)	1	F029	1/4-20 x 1/2 Hex Bolt	1	
19	5281-5	Clevis Pin (1/4 x 0.80)	2	F034	5/16-18 x 3/4 Hex Bolt	2	
20	5280	Clevis (1/4)	2	F041	3/8-16 x 1-3/4 Hex Bolt	2	
21	8305	Brake Actuator Rod	1	F042	3/8-16 x 2-1/4 Hex Bolt	3	
22	8370	Bearing, Brake Actuator	1	F043	3/8-16 x 3 Hex Bolt	1	
23	8250	Brake Spring (1/2 x 2-1/2)	1	F047	3/8-16 x 4-1/2 Hex Bolt	1	
24	8369	Brake Actuator (Includes Items # 2 & 22)	1	F054	AN960616 Washer	3	
<b>PTO Drive Shaft Assembly</b>				F061	1/4 Internal Star Lock Washer	1	
25	7050-1	Dipstick, Gearbox	1	F067	3/16 x 3/16 x 1 Key	2	
26	8371-1	Mount Bracket, Brake Band	1	F069	3/32 x 1/2 Cotter Pin	3	
27	8377	Brake Band Guide	1	F070	1-3/4 Internal Snap Ring	1	
28	8050-11	PTO Gearbox / Flange Pulley	1	F116	1/4-20 x 1-1/4 Hex Bolt	1	
29	7248	Ground Drive Belt, Micro-V	1	F121	5/16-18 x 3/8 x 1 SHL Bolt	1	
30	7275-16	Universal Joint Tube Assembly (Spline)	1	F131	5/16-18 x 1/2 Hex Bolt	2	
31	8304	Brake Band (14-1/2)	1	F132	1/4-20 x 2-3/4 Hex Bolt	1	
32	7523-2	Clevis Pin W/Hole (1/4 x 5/8)	1	F168	5/16 Split Lock Washer	10	
33	6250-1	Drive Belt (3VX370)	1	F171	5/16-18 x 3/8 Set Screw	4	
34	7236-1	PTO Drive Pulley (4-1/2/3V) (Includes Items # F168 & F226)	1	F178	1/4 x 1 Fender Washer	1	
35	8237-3	Engine Pulley (4/3.8/3V) (Includes Item # F226)	1	F182	1/4 x 5/8 x 1/8 Washer	2	
36	8230	Engine PTO Belt	1	F226	5/16-18 x 7/8 Hex Bolt	14	
<b>Jackshaft Assembly</b>				F241	.375 x .875 x .10 Washer	1	
37	7245-1	Idler Pulley (3/8 Groove)	1	F261	AN960616L Washer	1	
38	6325-2	Spacer Bushing (5/16)	2	F336	3/8-16 Jam Nut	1	
39	8349-4	Idler Arm	1	F353	3/8-16 ESNA LP Nut	1	
				* Service Part Only			

# MAIN COMPONENT POWER TRANSMISSION

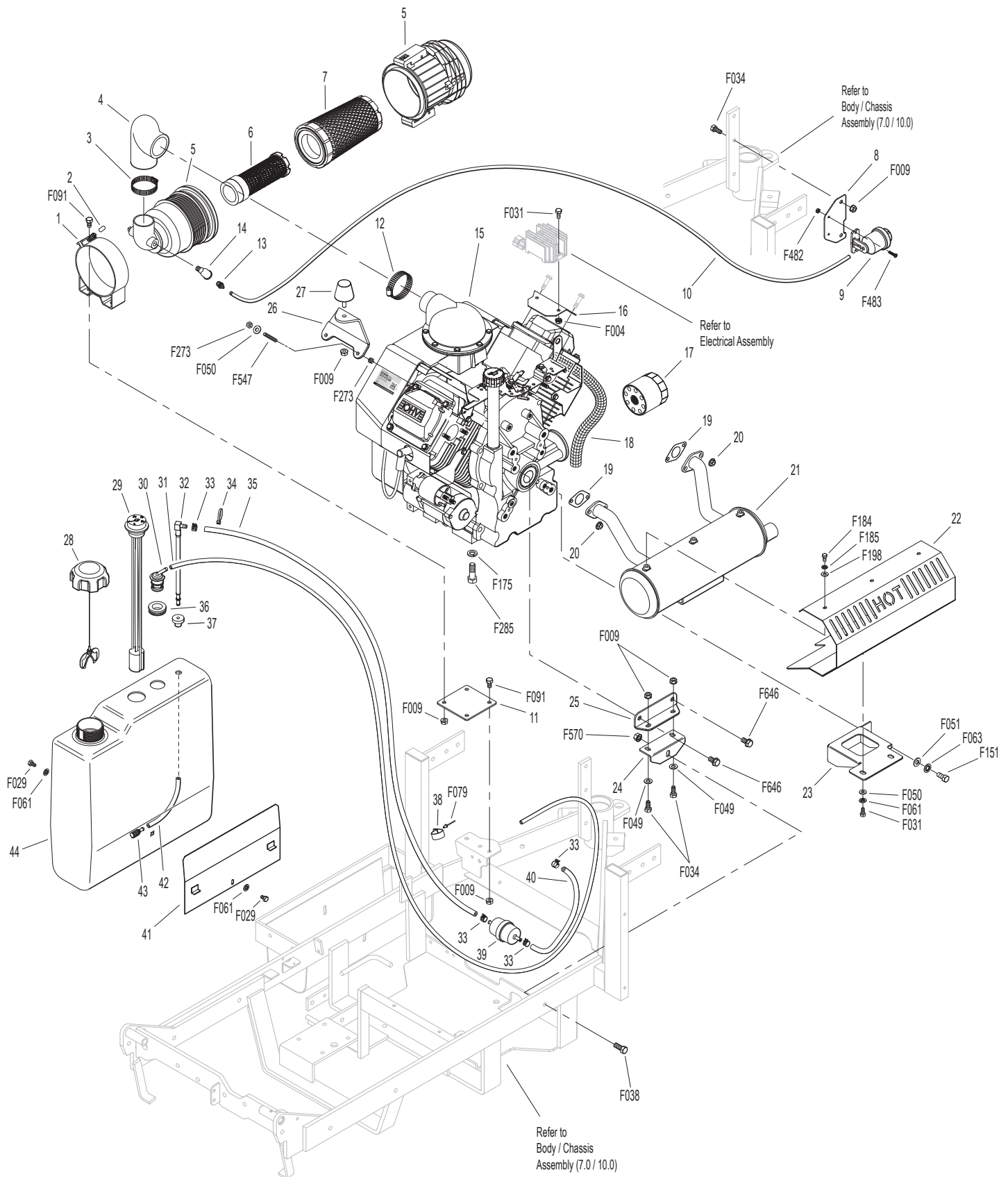


Model C19 Beginning S/N 187255  
 Use only genuine Walker® replacement parts.

# ENGINE GROUP

ITEM NO.	PART NO.	DESCRIPTION	NO. REQ'D	ITEM NO.	PART NO.	DESCRIPTION	NO. REQ'D
<b>Precleaner Assembly</b>				42	5086-7	Hose (1/4 x 6)	1
1	NS	Air Cleaner Band	1	43	5020-2	Fuel Filter, In Tank	1
2	7854-1	Plastic Tip, Black (.218 ID)	1	44	6055-2	Fuel Tank, 4.0 Gallon, Gas (Includes Items # 29, 30, 32, 36, 42 & 43)	1
3	6029	Hose Clamp (1-13/16 to 2-3/4)	1	<b>Fasteners</b>			
4	6087-6	Air Intake Hose	1	F004	1/4-20 Keps Nut		2
5	4090	Air Cleaner Assembly (90 Deg. 2") (Includes Item # 1)	*	F009	5/16-18 Whiz Locknut		9
6	5090-5	Safety Filter Insert, VLR	1	F029	1/4-20 x 1/2 Hex Bolt		2
7	5090-6	Air Cleaner Cartridge, VLR	1	F031	1/4-20 x 5/8 Hex Bolt		4
8	5091-15	Air Flow Indicator Mount	1	F034	5/16-18 x 3/4 Hex Bolt		4
9	5091-19	Air Flow Indicator W/Bracket (Vacuum 15" H2O)	1	F038	3/8-16 x 1 Hex Bolt		1
10	M258	Vacuum Hose (17")	1**	F049	5/16 SAE Washer		2
11	7334-3	Air Cleaner Bracket	1	F050	1/4 SAE Washer		4
12	7840-5	Hose Clamp (1.56 to 2.50)	1	F051	3/8 SAE Washer		2
13	5091-0	1/8 Pipe Thread Male W/Barb	1	F061	1/4 Internal Star Lock Washer		4
14	5091-16	Street Elbow 90' (1/8 x 1/8)	1	F063	3/8 Internal Star Lock Washer		2
<b>Engine &amp; Exhaust Assemblies</b>				F079	A/A66D Aluminum Pop Rivet		1
15	NS	19 HP Kohler Engine	1	F091	5/16-18 x 5/8 Hex Bolt		4
16	8016-4	Regulator Mount	1	F151	3/8-16 x 7/8 Hex Bolt		2
17	NS	Oil Filter	1***	F175	1/2 Split Lock Washer		4
18	8123	Insulating Sleeve (3/8 x 6)	1	F184	1/4-20 x 1/2 Hex Bolt, SS		3
19	NS	Gasket (Kohler)	2 <sup>Δ</sup>	F185	1/4 Internal Star Lockwasher, SS		3
20	NS	Nut (Kohler)	4 <sup>Δ</sup>	F198	.250 x .625 x .040 Washer, SS		3
21	6013-15	Muffler	1	F273	M6 x 1.0 Nut		4
22	6013-18	Muffler Heat Shield	1	F285	1/2-13 x 1-1/2 Hex Bolt		4
23	6013-19	Muffler Brace	1	F482	8-32 Nylock Nut		2
24	8021-2	Engine Brace, Chassis	1	F483	8-32 x 3/4 PPHMS		2
25	8021-1	Engine Brace	1	F547	M6 x 1.0 x 45 Stud		2
26	8010-2	Engine Bumper Mount	1	F570	3/8-16 Flange Top Lock Nut		1
27	5845	Rubber Bumper (1.50 x 1.25)	1	F646	3/8-16 x 3/4 Serrated Hex Bolt		2
<b>Fuel Tank Assembly</b>				* Service Part Only			
28	5082-4	2-1/4 Ratchet Fuel Cap	1	<b>** Required hose specifications:</b>			
29	8055-2	Fuel Tank Gauge	1	M113 - 3/16" ID fuel/oil/vapor hose (Gates 4219-0093 or equivalent)			
30	8043-8	Roll Over Valve	1	M247 - 5/16" ID low permeation (<15g/m <sup>2</sup> /day) fuel hose (Parker 38905 or equivalent)			
31	M113	Fuel Line (3/16 x 26-1/2")	1**	M258 - 7/64" ID automotive vacuum hose			
32	5083-8	Tank Tube (13")	1	*** Refer to the Operator's Manual for recommended part number.			
33	5879-3	Hose Clamp (1/2)	4	Δ Use the engine model and spec number from Kohler to order this item.			
34	5975-3	Cable Tie (50# x 7")	1	<b>NOTE:</b> Refer to Kohler Engine Decal (NS) for Engine Identification Numbers.			
35	M247	Fuel Line, Tank (5/16 x 9")	1**				
36	5977-7	Roll Over Grommet (.900 x 1-1/2)	1				
37	5083-1	Bushing, Rubber	*				
38	7833	Cable Clamp (7/8 x 1/4)	1				
39	5020	Fuel Filter	1				
40	NS	Fuel Line, Engine (Kohler)	*				
41	8023	Fuel Tank Support	1				

# ENGINE GROUP



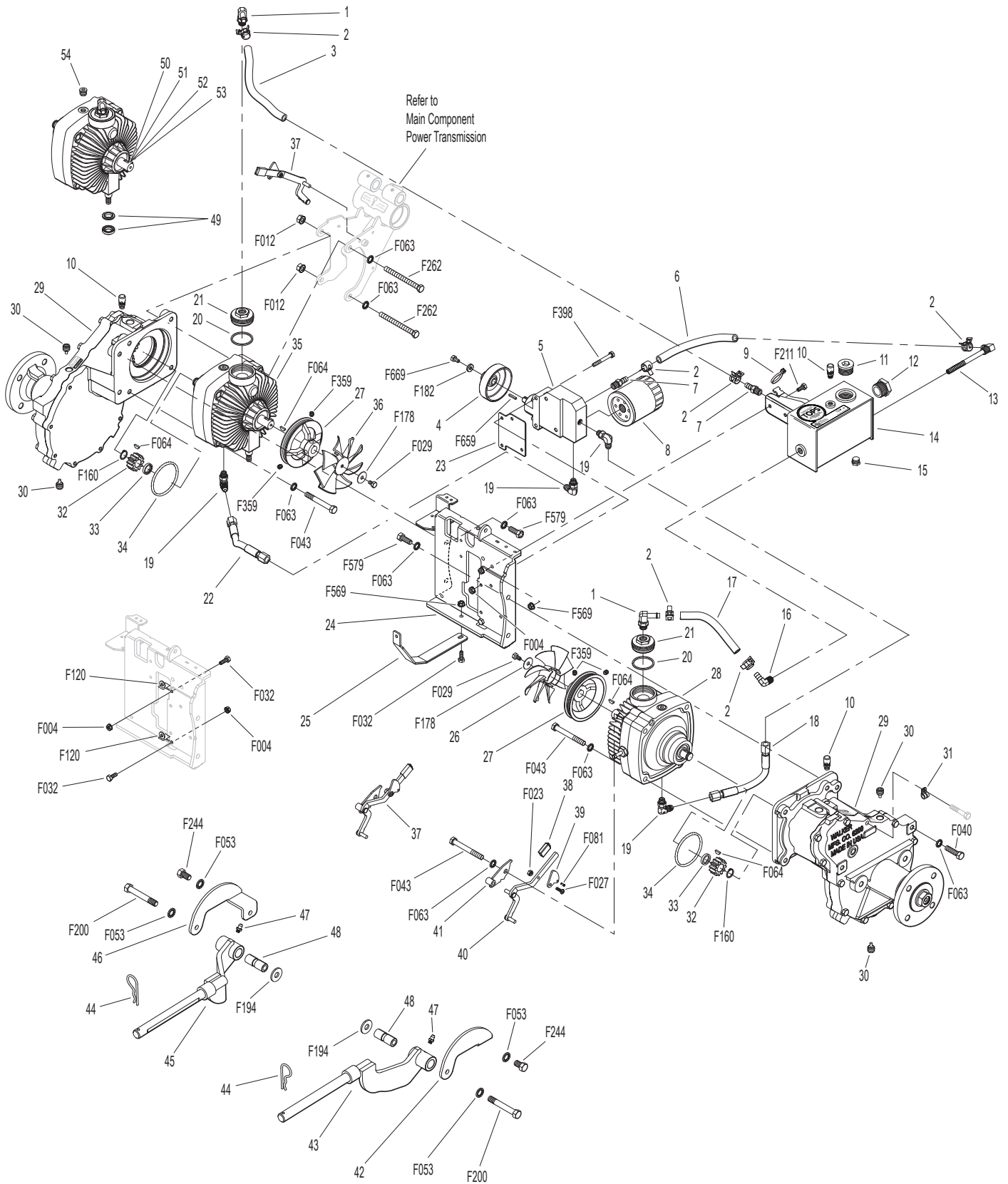
# HYDROSTATIC GROUND DRIVE ASSEMBLIES

ITEM NO.	PART NO.	DESCRIPTION	NO. REQ'D	ITEM NO.	PART NO.	DESCRIPTION	NO. REQ'D
<b>TOPS™ Components</b>				40	5028-5	Lockout Lever	2
1	5024-22	3/8 Hose Barb x #6/ORB 90 Degree	2	41	5027-5	Lockout Mount	1**
2	5879-11	Hose Clamp (16mm)	6	<b>Deck Support Arm Assemblies</b>			
3	M358	High Temp Hose (3/8" x 8-1/4")	1	42	6430-10	Outboard Mount, LH	1
4	5024-30	Pulley	1	43	6431-1	Deck Support Arm, LH (Includes Item # 47)	1
5	5025-51	Hydro Pump Assembly (Includes Items # 7 & 19)	1	44	5775-2	Hitch Pin (# 6)	2
6	M358	High Temp Hose (3/8" x 8-3/4")	1	45	6431-2	Deck Support Arm, RH (Includes Item # 47)	1
7	5024-15	1/4-18 Pipe Thread, 3/8 Barb Fitting	2	46	6430-9	Outboard Mount, RH	1
8	5024-13	Transmission Oil Filter	1	47	5830	Grease Fitting	2
9	5975-3	Cable Tie (50# x 7")	1	48	6840-1	Support Arm Bushing (2-1/16)	2
10	6206-1	Air Vent Valve	3	<b>Transmission Repair Parts</b>			
11	5024-27	1-1/16"-12 Socket Plug Reservoir Cap	1	49	5025-16	Control Shaft Repair Kit	*
12	5024-25	Oil Reservoir Sight Gauge	1	50	5025-13	Hydro Input Shaft / Repair Kit (Includes Items # 51-53)	*
13	5024-9	90 Degree Fitting W/Filter	1	51	5025-8	Bearing, Input Shaft	*
14	5025-42	Oil Tank Reservoir Assembly (Includes Items # 7, 10-13 & 15-16)	1	52	5025-7	Snap Ring	*
15	7427-12	Brass Pipe Plug (1/4 NPTF)	1	53	NS	Seal, Input Shaft	*
16	5024-23	90 Degree Male Fitting, 3/8 Barb 1/4 Thread	1	54	5025-53	O-Ring & Plug	*
17	M358	High Temp Hose (3/8" x 6-1/2")	1	<b>Fasteners</b>			
18	5024-11	Left Hand Hose (7-3/8")	1	F004	1/4-20 Keps Nut		6
19	5024-10	Elbow, 90 Degree (1/2-20 x 9/16-18)	4	F012	3/8-16 Keps Nut		2
20	5022	Reservoir/Casting Gasket	2	F023	10-24 ESNA Nut		2
21	5024-7	Transmission Reservoir Adapter Fitting	2	F027	10-24 x 5/8 PPHMS		2
22	5024-12	Right Hand Hose (9-3/8")	1	F029	1/4-20 x 1/2 Hex Bolt		2
<b>Ground Drive Assemblies</b>				F032	1/4-20 x 3/4 Hex Bolt		3
23	6209-11	Bridge Spacer Plate	1	F040	3/8-16 x 1-1/2 Hex Bolt		4
24	6209-8	Bridge Assembly (Includes Items # 23, F004, F032 & F120)	1***	F043	3/8-16 x 3 Hex Bolt		6
25	6243-6	Fan Guard	1	F053	7/16 Internal Star Lock Washer		4
26	6243-1	Hydro Fan, CW	1	F063	3/8 Internal Star Lock Washer		17
27	7244	Hydro Pulley (3-7/8/MV) (Includes Items # F064 & F359)	2	F064	1/8 x 1/2 Woodruff Key (#3)		4
28	5026-34	Hydrostatic Drive, CW	1	F081	A/A45D Aluminum Pop Rivet		2
29	6200-9	Gear Axle Drive Assembly (Includes Items # 10 & 30)	2	F120	AN960416 Washer		2
30	6207-12	Pipe Plug (1/4 NPTF)	4	F160	External Snap Ring (.669 Shaft)		2
31	5126	Cable Retainer (Uses existing bolt on Gear Axle Drive Assembly)	1	F178	1/4 x 1 Fender Washer		2
32	6233-1	Pinion Gear	2	F182	1/4 x 5/8 x 1/8 Washer		1
33	6234	Spacer, Pinion Gear	2	F194	7/16 x 1-1/4 x 1/8 Washer		2
34	6201	O-Ring Seal	2	F200	7/16-20 x 3 Grade 8 Bolt		2
35	5025-34	Hydrostatic Drive, CCW	1	F211	1/4-20 x 7/8 Hex Bolt		2
36	6243-2	Hydro Fan, CCW	1	F244	7/16-20 x 3/4 Hex Bolt		2
<b>Transmission Lockout Assembly</b>				F262	3/8-16 x 4 Hex Bolt All Thread		2
37	5028-3	Transmission Lockout Assembly (Includes Items # 38-41, F023, F027 & F081)	*	F359	5/16-18 x 5/16 Set Screw (Knurl Point)		4
38	5847	Plastic Tip	2	F398	1/4-20 x 2 Hex Bolt		4
39	5057	Lockout Cam (Includes Item # F081)	2	F569	1/4-20 Flange Top Lock Nut		3
				F579	3/8-16 x 1 Hex Bolt Grade 8		4
				F659	1/8 x 1/8 x 3/4 Key		1
				F669	1/4-20 x 5/8 Hex Bolt W/Loctite		1

\* Service Part Only  
 \*\* Part not used on Jackshaft side of tractor.  
 \*\*\* Includes Spacer Options—See Advisory Bulletin #23300.



# HYDROSTATIC GROUND DRIVE ASSEMBLIES



# STEERING CONTROL ASSEMBLIES

ITEM NO.	PART NO.	DESCRIPTION	NO. REQ'D	ITEM NO.	PART NO.	DESCRIPTION	NO. REQ'D
<b>Transmission Spring Assemblies</b>				<b>Steering Lever Assemblies</b>			
1	6201-4	Shock Mount Gear Drive, RH	1	32	5217-1	Pivot Pin, Steering Lever	1
2	5146	10mm Ball Stud	4	33	5391-3	Steering Lever Support	1
3	5199-4	Steering Lever Dampener Assembly	2	34	5225-4	Extension Spring (5/8 x 2)	2
4	6201-3	Shock Mount Gear Drive, LH	1	35	5451-12	Steering Lever Assembly, LH / Adjustable (Includes Items # 2, 9-11, 17, 34, F009, F034 & F582)	1
5	5214-2	Ball Joint (5/16-24) Nylon Lined	2	36	5453-14	Steering Lever Handle, Adjustable (Includes Items # 14 & F345)	2
6	6212-7	Transmission Control Arm, LH	1	37	5450-12	Steering Lever Assembly, RH / Adjustable (Includes Items # 2, 9-11, 17, 34, F009, F034 & F582)	1
7	5213-3	Control Rod (6")	1	<b>Fasteners</b>			
8	5665-1	Compression Spring (2-1/2)	2	F004	1/4-20 Keps Nut		5
9	5463-7	Steering Lever Actuator	2	F007	5/16-18 Jam Nut		2
10	5463-5	Steering Arm Pivot Bushing (SS)	2	F009	5/16-18 Whiz Locknut		7
11	7201-2	Fiberglide Bearing 1/2"	2	F010	5/16-24 ESNA Nut		4
12	5213-4	Control Rod (14-3/4")	1	F012	3/8-16 Keps Nut		2
13	5212-7	Transmission Control Arm, RH	1	F024	5/16-24 Jam Nut		4
<b>Forward Speed Control Assemblies</b>				F029	1/4-20 x 1/2 Hex Bolt		2
14	5850-2	Handle Grip, Foam (5-1/2)	3	F031	1/4-20 x 5/8 Hex Bolt		1
15	7170-2	FSC Lever Assembly (Includes Item # 17)	1	F032	1/4-20 x 3/4 Hex Bolt		2
16	5975-3	Cable Tie (50# x 7")	1	F034	5/16-18 x 3/4 Hex Bolt		4
17	5830	Grease Fitting	6	F038	3/8-16 x 1 Hex Bolt		2
18	5214-4	Ball Joint (5/16-24) W/O Stud	2	F050	1/4 SAE Washer		1
19	5219	Extension Spring (3/4 x 6-3/4)	1	F051	3/8 SAE Washer		2
20	5172	Bearing, Delrin (.250 x .375 x .250)	2	F064	1/8 x 1/2 Woodruff Key (#3)		2
21	5141-1	FSC Actuator Block	1	F069	3/32 x 1/2 Cotter Pin		1
22	5140-9	FSC Brace	1	F146	1/4-20 Jam Nut		1
23	5141	FSC Friction Washer (1-1/2 x 3/8 x 1/16)	2	F182	1/4 x 5/8 x 1/8 Washer		1
24	5142-8	FSC Key	1	F183	.312 x .700 x .074 Washer		3
	5140-25	FSC Control Assembly (Includes Items # 17, 23-25, 28, F182, F192 & F193)	*	F186	5/64 x 1/2 Cotter Pin		1
25	5140-35	FSC Friction Body (Includes Item # 17)	1	F188	1/4-20 Self-Locking Nut		4
26	5141-2	FSC Actuator Rod	1	F192	3/8-24 Self-Locking Nut		1
27	5281-5	Clevis Pin (1/4 x 0.80)	1	F193	3/8 Belleville Spring Washer		3
28	5142-9	FSC Actuator Cam	1	F198	.250 x .625 x .040 Washer, SS		2
29	5141-3	Spacer (.750 x .313 x .688)	1	F226	5/16-18 x 7/8 Hex Bolt		1
30	5141-4	FSC Rod	1	F316	5/16-18 x 1-3/4 Hex Bolt		1
31	5470-2	Speed Control Stop	1	F345	1/4-20 x .770 Knurled Bolt		4
				F350	1/4-20 LP Nylock		1
				F353	3/8-16 ESNA LP Nut		2
				F401	.504 x .751 x .030 Washer		1
				F562	5/16-18 x 1 Set Screw		2
				F582	Washer 5/16 x 7/8 x .125		2

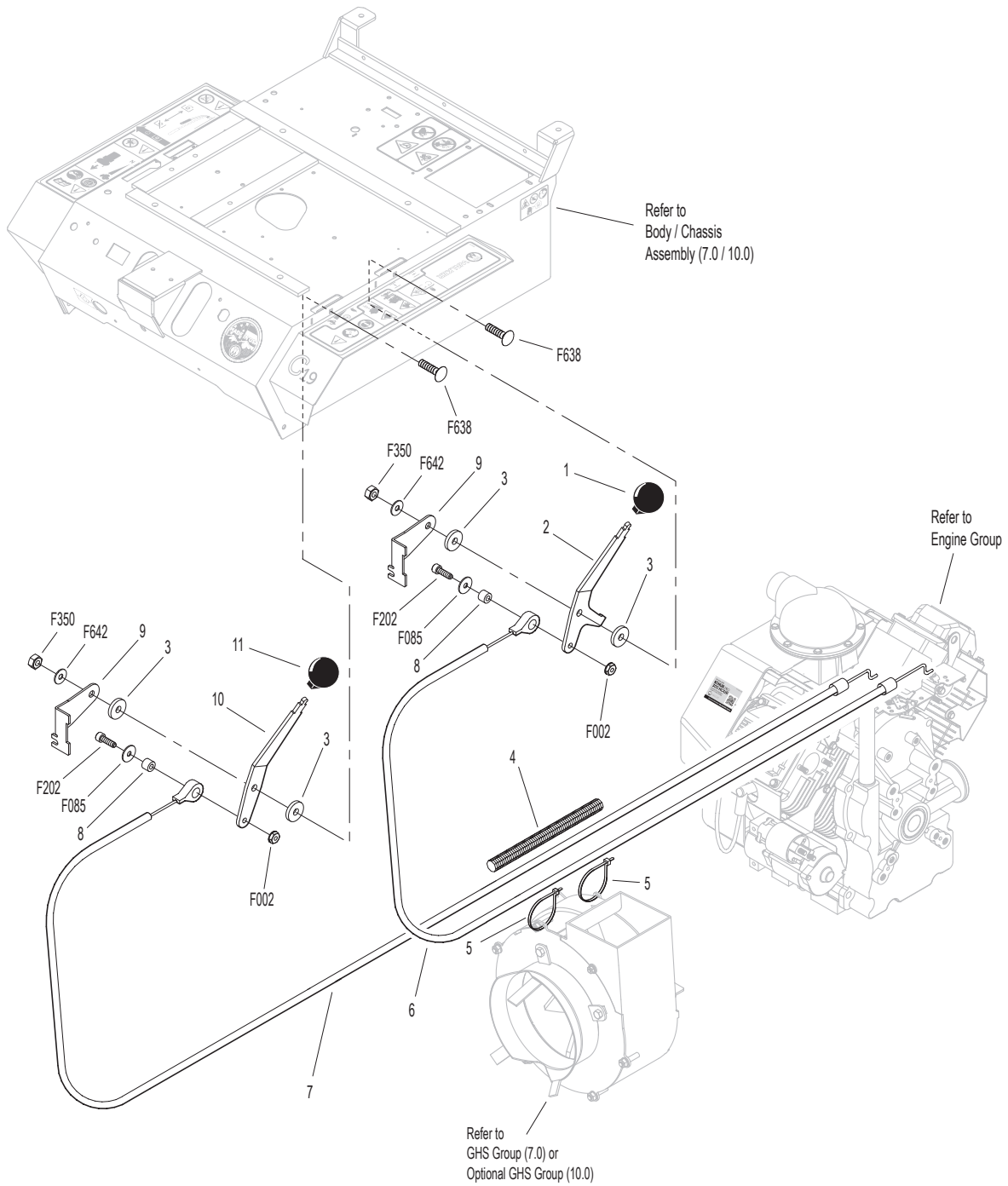
\* Service Part Only



# THROTTLE & CHOKE CONTROL ASSEMBLIES

ITEM NO.	PART NO.	DESCRIPTION	NO. REQ'D	ITEM NO.	PART NO.	DESCRIPTION	NO. REQ'D
<b>Throttle &amp; Choke Control Assemblies</b>				<b>Fasteners</b>			
1	5108-6	Choke Control Knob, Black	1	F002		10-24 Keps Nut	2
2	5108-40	Control Lever, Choke	1	F085		3/16 Rivet Backup Washer	2
3	5108-10	Friction Washer (.125)	4	F202		10-24 x 5/8 SHC Screw GR 5	2
4	8123	Insulating Sleeve (3/8 x 6)	1	F350		1/4-20 LP Nylock	2
5	5975-1	Cable Tie (18# x 3-3/4")	2	F638		1/4-20 x 1 Carriage Bolt	2
6	8122-1	Choke Cable	1	F642		1/4 x .042 Belleville Washer	2
7	8121-1	Throttle Cable	1				
8	5172-6	Bushing, SS (.375 x .188 x .290)	2				
9	5108-29	Control Bracket	2				
10	5108-31	Control Lever, Throttle	1				
11	5108-5	Throttle Control Knob, Red	1				

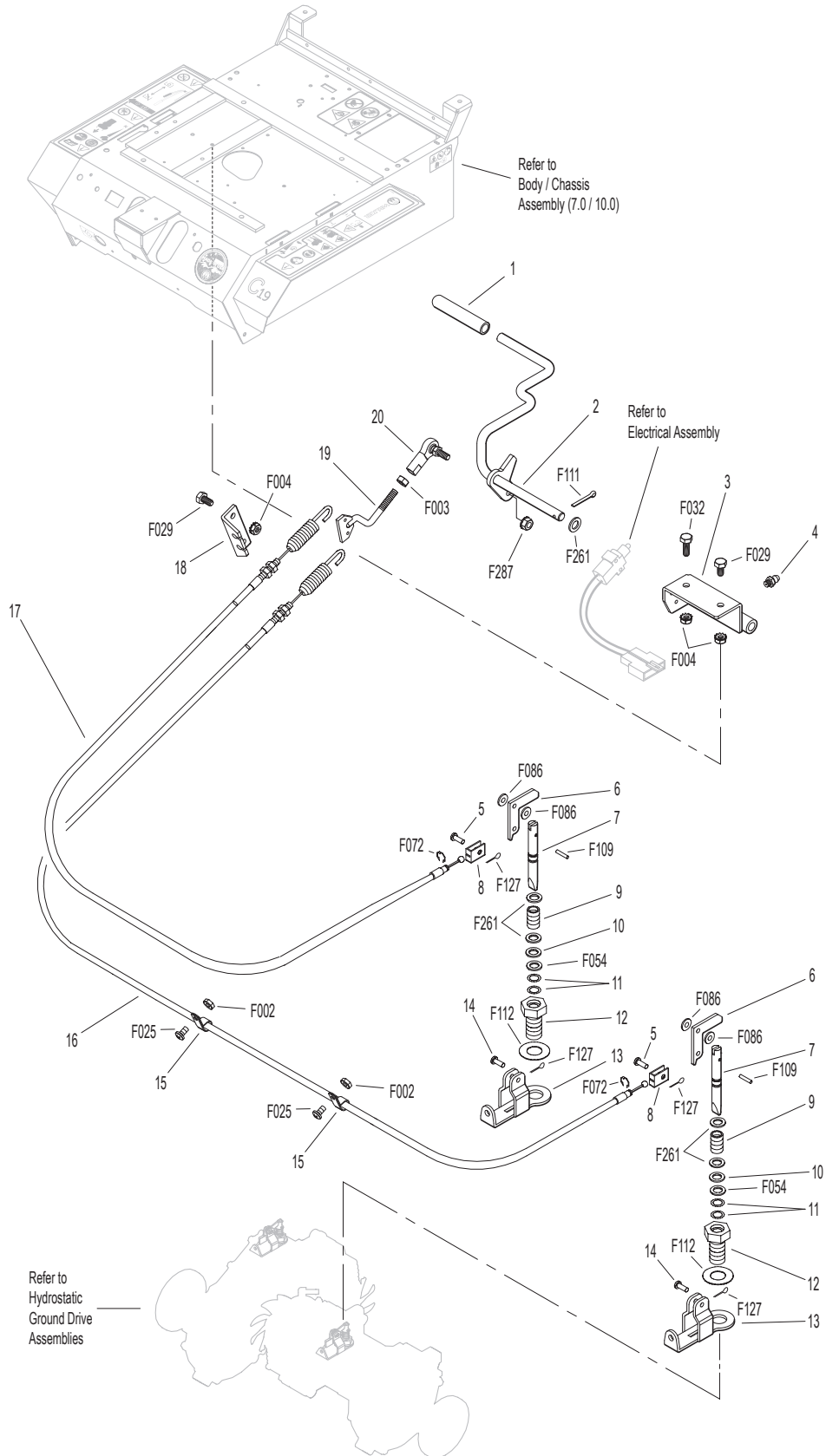
# THROTTLE & CHOKE CONTROL ASSEMBLIES



# PARKING BRAKE ASSEMBLY

ITEM NO.	PART NO.	DESCRIPTION	NO. REQ'D	ITEM NO.	PART NO.	DESCRIPTION	NO. REQ'D
<b>Parking Brake Assembly</b>				<b>Fasteners</b>			
1	7406-1	Handle Grip, Red	1	F002		10-24 Keps Nut	2
2	7406-9	Parking Brake Lever	1	F003		1/4-28 Hex Nut	1
3	7406-10	Lever Mount	1	F004		1/4-20 Keps Nut	4
4	5830	Grease Fitting	1	F025		10-24 x 3/8 PPHMS	2
5	7407	Clevis Pin (3/16 x 1/2)	2	F029		1/4-20 x 1/2 Hex Bolt	3
6	7404-6	Brake Actuator Arm	2	F032		1/4-20 x 3/4 Hex Bolt	1
7	7405	Pin, Transmission Lock	2	F054		AN960616 Washer	2
8	7402	Clevis	2	F072		1/4 "E" Retainer Ring	2
9	7408	Compression Spring (1/2 x 3/4)	2	F086		#10 SAE Washer	4
10	7415	Rubber Dust Shield (5/8 x 3/8 x 1/32)	2	F109		1/8 x 5/8 Roll Pin	2
11	5567-3	O-Ring (1/4 x 3/8)	4	F111		1/8 x 3/4 Cotter Pin	1
12	7403	Plunger Bushing, Gear Axle	2	F112		5/8 x 1-1/4 x .03 Washer	2
13	7404-7	Brake Actuator Mount	2	F127		1/16 x 1/2 Cotter Pin	4
14	7412	Clevis Pin (3/16 x 5/8)	2	F261		AN960616L Washer	5
15	5833	Cable Clamp (1/4)	2	F287		1/4-28 Keps Nut	1
16	7410	Brake Control Cable, LH (25.5")	1				
17	7409	Brake Control Cable, RH (20.5")	1				
18	7401-3	Cable Mount Bracket	1				
19	7401-1	Cable Pull Rod	1				
20	5552	Ball Joint (1/4-28)	1				

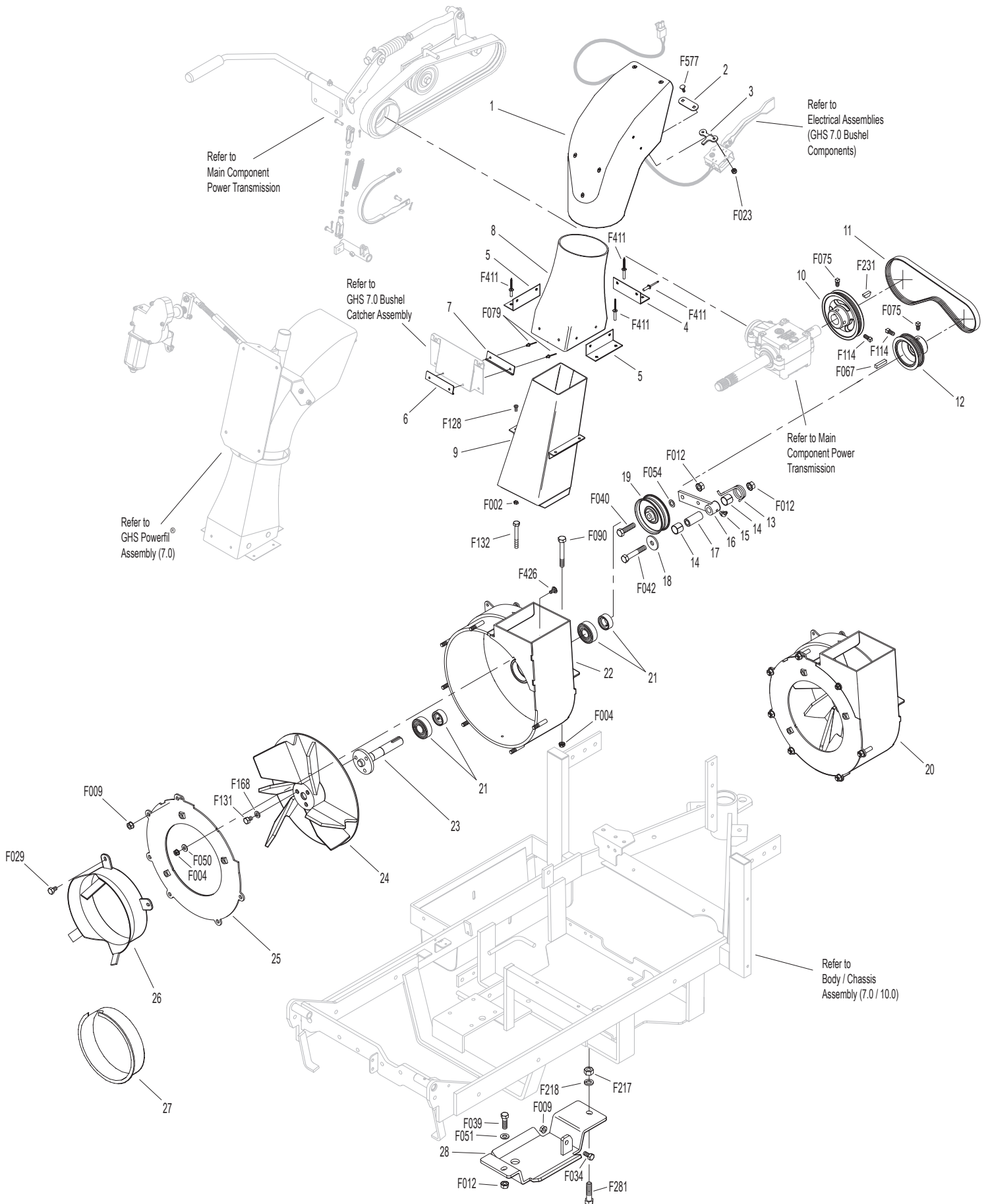
# PARKING BRAKE ASSEMBLY







# GHS GROUP (7.0)

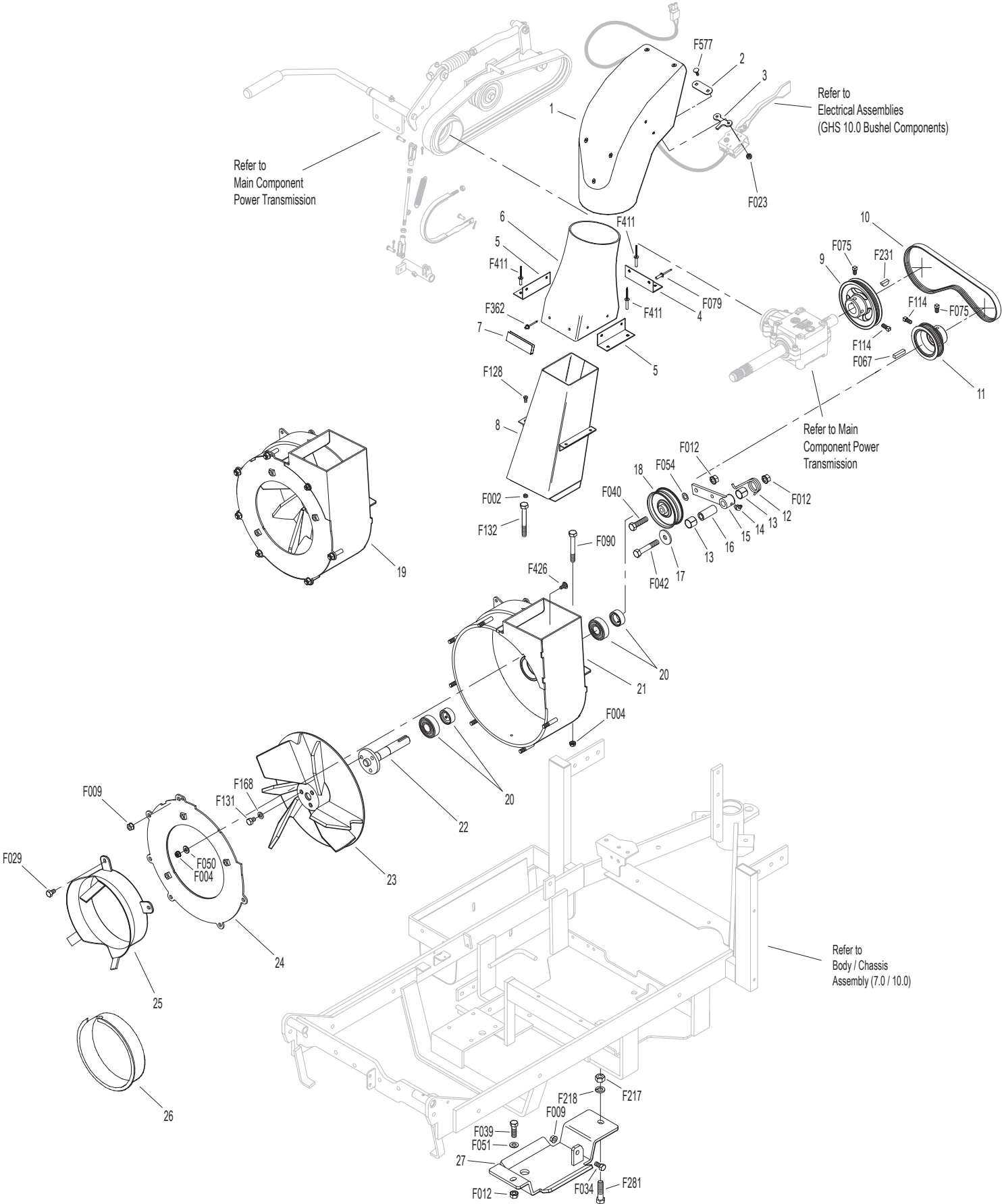


Model C19 Beginning S/N 187255  
 Use only genuine Walker® replacement parts.

# GHS GROUP (10.0)

ITEM NO.	PART NO.	DESCRIPTION	NO. REQ'D	ITEM NO.	PART NO.	DESCRIPTION	NO. REQ'D
<b>Delivery Chute Assembly</b>				<b>Fasteners</b>			
1	5515-4	Elbow Delivery Spout	1	F002		10-24 Keps Nut	4
2	5592-24	Backing Plate, Grass-Pak® Switch	1	F004		1/4-20 Keps Nut	3
3	5592-23	Grass-Pak® Housing Spacer	1	F009		5/16-18 Whiz Locknut	7
4	5578	Rear Clip, Chute Mount	1	F012		3/8-16 Keps Nut	3
5	5577	Side Clip, Chute Mount	2	F023		10-24 ESNA Nut	2
6	8511-1	Delivery Chute W/Clips (Includes Items # 4, 5, 7, F362 & F411)	1	F029		1/4-20 x 1/2 Hex Bolt	3
7	5578-10	Front Clip, Chute Mount	1	F034		5/16-18 x 3/4 Hex Bolt	1
8	7530-4	Body Chute (10.5 Blower)	1	F039		3/8-16 x 1-1/4 Hex Bolt	1
				F040		3/8-16 x 1-1/2 Hex Bolt	1
				F042		3/8-16 x 2-1/4 Hex Bolt	1
				F050		1/4 SAE Washer	1
				F051		3/8 SAE Washer	1
				F054		AN960616 Washer	1
				F067		3/16 x 3/16 x 1 Key	1
				F075		5/16-18 x 1/2 SQH Set Screw	2
				F079		A/A66D Aluminum Pop Rivet	6
				F090		1/4-20 x 2-1/2 Hex Bolt	1
				F114		5/16-18 x 5/8 SQH Set Screw	2
				F128		10-24 x 3/8 PTHMS	4
				F131		5/16-18 x 1/2 Hex Bolt	3
				F132		1/4-20 x 2-3/4 Hex Bolt	1
				F168		5/16 Split Lock Washer	3
				F217		7/16-14 Hex Nut	1
				F218		7/16 Split Lock Washer	1
				F231		1/4 x 3/4 Woodruff Key (# 806)	1
				F281		7/16-14 x 1-3/4 Hex Bolt	1
				F362		A/A62D Alum. Pop Rivet (3/16D x 13/32L)	2
				F411		3/16 Bulbex Rivet	6
				F426		1/4-20 x 1/2 Carriage Bolt	1
				F577		10-24 x 5/8 Carriage Bolt	2
<b>Blower Belt Tightener Assembly</b>				* Plugs Blower when GHS is not in use. Furnished only with Mulching Decks, SD Decks used on a GHS Tractor, Rotary Broom Attachment and Snowblower Attachment. Use of this part may be replaced by installing Blower Lockout Kit (P/N 7541-1).			
9	7238-6	Blower Drive Pulley (Includes Items # F075, F114 & F231)	1				
10	7234-2	Blower Belt (Micro-V)	1				
11	7239-1	Blower Pulley (Micro-V) (Includes Items # F067, F075 & F114)	1				
12	7364-2	Torsion Spring	1				
13	7201-3	Fiberglide Bearing	2				
14	5830-3	Grease Fitting (45 Deg.)	1				
15	7364-1	Blower Belt Tightener Arm	1				
16	7201-4	Inner Race (1-1/2)	1				
17	5841	Retainer Washer (3/8 x 1-1/4)	1				
18	5245	Idler Pulley (3")	1				
<b>Blower Assembly</b>							
19	7544	Blower Assembly (10.5") (Includes Items # 20-24, F004, F009, F029, F050, F131, F168 & F426)	1				
20	5268	Bearing W/Collar (3/4)	2				
21	7544-3	Blower Housing (10.5)	1				
22	7545-2	Blower Output Shaft (10.5)	1				
23	7545	Blower Wheel (10.5")	1				
24	7543-1	Blower Faceplate (10.5)	1				
25	7526	Intake Tube (10.5 Blower)	1				
26	5595-2	Intake Cover / GHS	*				
27	7528-5	Skid Bar	1				

# GHS GROUP (10.0)



Model C19 Beginning S/N 187255  
 Use only genuine **Walker**® replacement parts.

## GHS POWERFIL® ASSEMBLY (7.0)

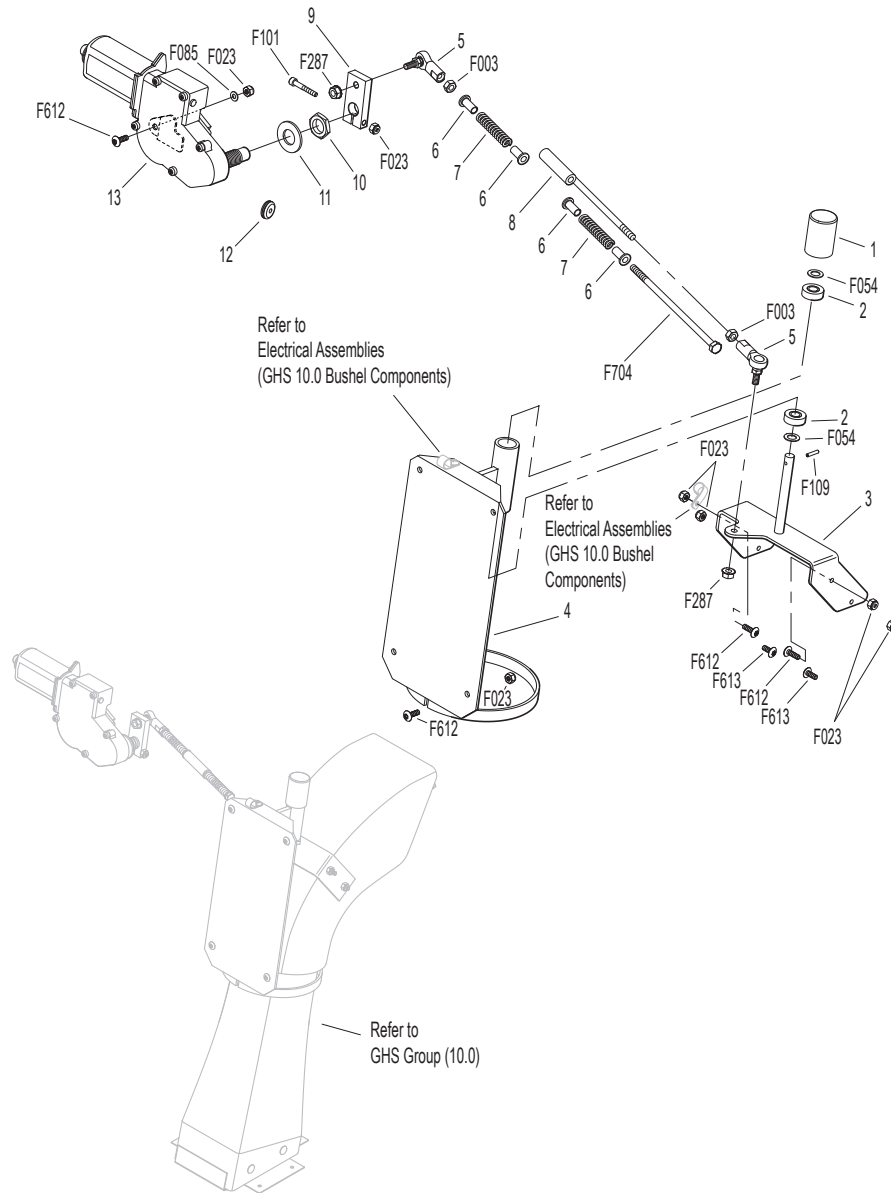
ITEM NO.	PART NO.	DESCRIPTION	NO. REQ'D	ITEM NO.	PART NO.	DESCRIPTION	NO. REQ'D
<b>7.0 GHS Powerfil® Assembly</b>				<b>Fasteners</b>			
1	5552	Ball Joint (1/4-28)	2	F003		1/4-28 Hex Nut	2
2	5553-3	Bushing, Powerfil® Actuator	4	F023		10-24 ESNA Nut	10
3	5553-1	Compression Spring (1/2 x 2)	2	F054		AN960616 Washer	2
4	5558-2	Powerfil® Actuator Rod	1	F085		3/16 Rivet Backup Washer	1
	5549	Actuator Rod Assembly (Includes Items # 1-4, F003, F287 & F704)	*	F101		10-24 x 1-1/4 SHC Screw	1
5	5551-3	Bearing Cap, Powerfil®	1	F109		1/8 x 5/8 Roll Pin	1
6	5551-1	Pivot Bearing (#S3PP)	2	F287		1/4-28 Keps Nut	2
7	5518-6	Pivot, Delivery Spout	1	F612		10-24 x 5/8 Truss Head Torx	7
8	5517-2	Pivot Mount	1	F613		10-24 x 1/2 Truss Head Torx	2
9	5519-5	Actuator Motor (12V) (Includes Items # 10 & 11)	1	F704		1/4-28 x 6-1/2 Hex Bolt Grade 5, Clear Zinc	1
10	5519-2	Motor Mount Washer	*	* Service Part Only			
11	5519-3	Motor Mount Nut (5/8-24)	*				
12	5554	Actuator Arm	1				



# GHS POWERFIL® ASSEMBLY (10.0)

ITEM NO.	PART NO.	DESCRIPTION	NO. REQ'D	ITEM NO.	PART NO.	DESCRIPTION	NO. REQ'D
<b>10.0 GHS Powerfil® Assembly</b>				<b>Fasteners</b>			
1	5551-3	Bearing Cap, Powerfil®	1	F003		1/4-28 Hex Nut	2
2	5551-1	Pivot Bearing (#S3PP)	2	F023		10-24 ESNA Nut	10
3	5518-6	Pivot, Delivery Spout	1	F054		AN960616 Washer	2
4	5517-2	Pivot Mount	1	F085		3/16 Rivet Backup Washer	1
5	5552	Ball Joint (1/4-28)	2	F101		10-24 x 1-1/4 SHC Screw	1
6	5553-3	Bushing, Powerfil® Actuator	4	F109		1/8 x 5/8 Roll Pin	1
7	5553-1	Compression Spring (1/2 x 2)	2	F287		1/4-28 Keps Nut	2
8	5558-2	Powerfil® Actuator Rod	1	F612		10-24 x 5/8 Truss Head Torx	7
	5549	Actuator Rod Assembly (Includes Items # 5-8, F003, F287 & F704)	*	F613		10-24 x 1/2 Truss Head Torx	2
9	5554	Actuator Arm	1	F704		1/4-28 x 6-1/2 Hex Bolt Grade 5, Clear Zinc	1
10	5519-3	Motor Mount Nut (5/8-24)	*				
11	5519-2	Motor Mount Washer	*				
12	5976-2	Grommet (3/16 x 3/4)	1				
13	5519-5	Actuator Motor (12V) (Includes Items # 10 & 11)	1				
				*		Service Part Only	

# GHS POWERFIL® ASSEMBLY (10.0)



# GHS 7.0 BUSHEL CATCHER ASSEMBLY

ITEM NO.	PART NO.	DESCRIPTION	NO. REQ'D	ITEM NO.	PART NO.	DESCRIPTION	NO. REQ'D
<b>Upper Baffle Screen Assembly (Removable)</b>				39	7510-2	7.0 Bushel Catcher Box	1
					7502-5	7.0 Catcher W/Powerfil® (Includes Door)	*
1	7512-12	Removable Screen (3/16 Hole) (Includes Items # 2, F190 & F617)	1**	40	7607-8	Powerfil® Cover Plate	1
2	7506	Knob / Threaded Insert (10-24)	2	41	7608-4	Hinge Plate, RH	1
3	7509-7	Channel Top, LH	1	42	8155-8	7.0 Gas Spring Cover, RH	1
4	8606-2	Channel Bottom	2	43	7607-14	Catcher Door Arm, RH	1
5	6856-1	Edge Molding (21-3/4")	1	44	7584-3	Reinforcing Strap	1
6	6507	Screen Seal (23-1/4")	1	45	5801-4	Decal Plate, Round	2
7	7505	Mustache Spring	2	46	7608-5	Door Arm Stop	2
8	7509-6	C-Channel With Spring (Includes Items # 7 & F340)	1	<b>5598-2 Optional Dump Bag (Not Shown)</b> May be ordered as an option. Contact your Walker dealer.			
9	7509-8	Channel Top, RH	1	<b>Fasteners</b>			
<b>7.0 Exhaust Deflector Door Assembly</b>					F020	5/16-18 ESNA Nut	2
10	7607-3	Upper Door Seal	1	F023	10-24 ESNA Nut	28	
11	7510-4	7.0 Catcher Box Door (Includes Frame) (Includes Items # 10, 12, 13, 15, F085, F411, F649 & F654)	1	F029	1/4-20 x 1/2 Hex Bolt	2	
12	5583	Handle	1	F031	1/4-20 x 5/8 Hex Bolt	2	
13	7607-6	Lower Door Stiffener (7.0)	1	F049	5/16 SAE Washer	4	
14	8607-8	Door Guide	1	F050	1/4 SAE Washer	4	
15	7607-5	Upper Door Stiffener	1	F079	A/A66D Aluminum Pop Rivet	4	
<b>GHS 7.0 Bushel Catcher Assembly</b>					F085	3/16 Rivet Backup Washer	10
16	7503-8	Center Strap (7.0)	1	F094	8-32 x 1/2 PTHMS	6	
17	7503-6	Upper Frame Doubler (7.0)	2	F190	#10 Internal Star Lock Washer	2	
18	7503-5	Lower Frame Doubler (7.0)	2	F196	1/4-20 x 1 PPHMS, SS	4	
19	7503-4	Outside Box Strap (7.0)	2	F230	1/4-20 x 1-1/4 PPHMS, SS	4	
20	8608-4	Center Frame Doubler	1	F242	1/4-20 x 7/8 PPHMS, SS	8	
21	8608-11	Catcher Door Finger	1	F275	5/16-18 x 2 Hex Bolt	2	
22	7503-11	Catcher Mount	1	F340	Rivet, Aluminum	4	
23	7610-4	Catcher Dump Flap Spacer (7.0)	1	F351	Aluminum Pop Rivet	6	
24	7610-9	Catcher Dump Flap (7.0)	1	F360	1/4-20 x 3/8 Hex Bolt	2	
25	8610-3	Backing Plate / Dump Flap	1	F390	1/4-20 x 7/8 Carriage Bolt	4	
26	7620-3	Pivot Bushing (1/2 x 9/16)	4	F411	3/16 Bulbex Rivet	32	
27	7607-7	Bushing	2	F442	1/4-20 x 5/8 PTHMS	2	
28	7608-3	Hinge Plate, LH	1	F524	3/16 x 3/8 Aluminum Rivet, Black	8	
29	7607-15	Catcher Door Arm, LH	1	F540	1/4-20 x 1-3/4 PPHMS, SS	1	
30	8155-7	7.0 Gas Spring Cover, LH	1	F551	5/16-18 Flange Top Lock Nut	2	
31	5155-5	Gas Spring	2	F569	1/4-20 Flange Top Lock Nut	25	
32	5155-13	3/4 Ball Stud	2	F612	10-24 x 5/8 Truss Head Torx	4	
33	5523-6	Gas Spring Plate	2	F613	10-24 x 1/2 Truss Head Torx	10	
34	5155-12	5/16 Ball Stud	2	F617	10-24 x 3/8 Truss Head Torx	4	
35	5155-15	Box Support, Gas Spring	2	F618	10-24 x 3/4 Truss Head Torx	12	
36	7532-1	Handle, Catcher Lift	2	F649	3/16 x .510/.625 Grip Range Rivet, SS	4	
37	7511-6	Chute Cover	1	* Service Part Only			
38	7557-1	7.0 Wire Harness Channel	1	** This screen can be replaced by P/N 7512-13 Removable Screen (3/4" holes) for improved air flow performance in wet conditions.			





## GHS 10.0 BUSHEL CATCHER ASSEMBLY

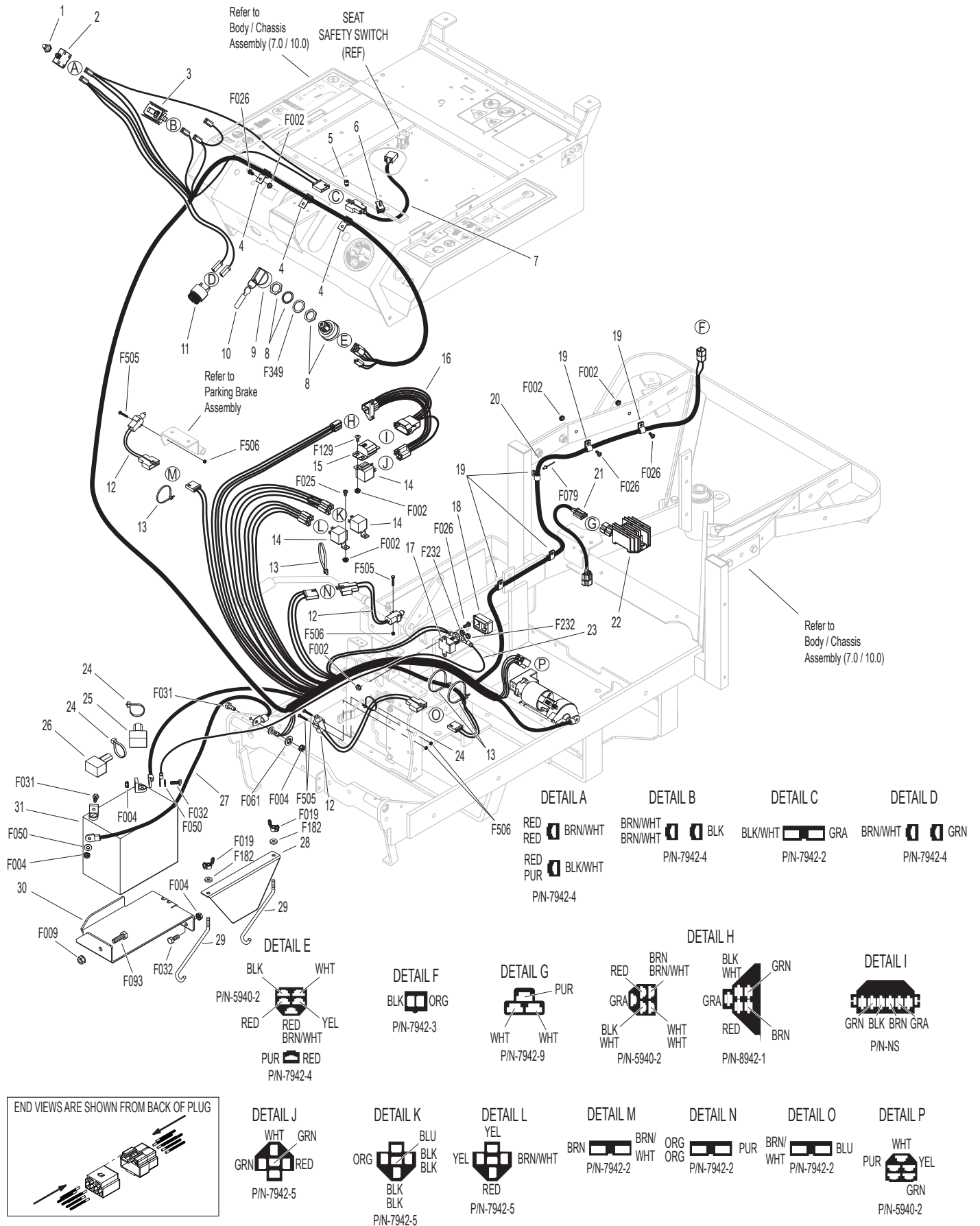
ITEM NO.	PART NO.	DESCRIPTION	NO. REQ'D	ITEM NO.	PART NO.	DESCRIPTION	NO. REQ'D
<b>Upper Baffle Screen Assembly (Removable)</b>				46	8117	Wire Harness Channel	1
1	7512-8	Removable Screen (3/16 Hole) (Includes Items # 2, 5, F190 & F617)	1**	47	5977-3	Grommet (9/16)	2
2	7506	Knob / Threaded Insert (10-24)	2	48	8602-3	10.0 Catcher W/O Powerfil®, Gray (Includes Door)	*
3	8606-3	Channel Top, LH	1		8602-4	10.0 Catcher W/Powerfil®, Gray (Includes Door)	*
4	8606-2	Channel Bottom	2		8610-5	10.0 Bushel Catcher Box, Gray	*
5	7856-1	Edge Molding (26")	1	49	8607-9	Powerfil® Cover Plate	1
6	7507	Screen Seal (27-1/2)	1	50	8155-2	Gas Spring Cover, RH	1
7	7505	Mustache Spring	2	51	8608-8	Hinge Plate, RH	1
8	8606	C-Channel (10.0)	1	52	8608-9	Torsion Bar	1
	8606-20	C-Channel With Spring (10.0) (Includes Items # 7, 8 & F340)	*	<b>5598-2 Optional Dump Bag (Not Shown)</b> May be ordered as an option. Contact your Walker dealer.			
9	8606-4	Channel Top, RH	1	<b>Fasteners</b>			
<b>10.0 Exhaust Deflector Door Assembly</b>					F020	5/16-18 ESNA Nut	2
10	8607-16	Upper Seal Support	1		F023	10-24 ESNA Nut	29
11	8607-17	Upper Door Seal	1		F024	5/16-24 Jam Nut	4
12	8607-18	Backup Plate	1		F029	1/4-20 x 1/2 Hex Bolt	8
13	8512-4	10.0 Catcher Box Door, Gray (Includes Items # 10-14, 16, 17, F085, F411, F649 & F654)	1		F032	1/4-20 x 3/4 Hex Bolt	2
					F049	5/16 SAE Washer	6
14	5583	Handle	1		F050	1/4 SAE Washer	2
15	8607-1	Door Mount, LH	1		F068	1/8 x 1 Cotter Pin	2
16	8607-12	Upper Door Stiffener	1		F079	A/A66D Aluminum Pop Rivet	5
17	8607-7	Lower Door Stiffener	1		F085	3/16 Rivet Backup Washer	10
18	8607-8	Door Guide	1		F094	8-32 x 1/2 PTHMS	6
19	8607-2	Door Mount, RH	1		F190	#10 Internal Star Lock Washer	2
<b>GHS 10.0 Bushel Catcher Assembly</b>					F195	1/4-20 x 3/4 PPHMS, SS	4
20	8608-13	Center Strap	1		F196	1/4-20 x 1 PPHMS, SS	4
21	8608-3	Upper Frame Doubler	2		F208	5/16-18 x 2-1/4 Hex Bolt	2
22	8608-1	Outside Box Strap	2		F230	1/4-20 x 1-1/4 PPHMS, SS	4
23	8608-2	Lower Frame Doubler	2		F242	1/4-20 x 7/8 PPHMS, SS	8
24	8608-4	Center Frame Doubler	1		F340	Rivet, Aluminum	4
25	8608-11	Catcher Door Finger	1		F351	Aluminum Pop Rivet	6
26	8608-6	Catcher Mount	1		F360	1/4-20 x 3/8 Hex Bolt	2
27	8610-8	Catcher Dump Flap	1		F390	1/4-20 x 7/8 Carriage Bolt	4
28	8610-3	Backing Plate, Dump Flap	1		F411	3/16 Bulbex Rivet	21
29	7584	Reinforcing Strap	1		F456	5/16-18 x 3/4 SBH Cap Screw, SS	4
30	5103-5	Pivot Bushing Inner	2		F524	3/16 x 3/8 Aluminum Rivet, Black	8
31	5801-4	Decal Plate, Round	2		F540	1/4-20 x 1-3/4 PPHMS, SS	1
32	7620-3	Pivot Bushing (1/2 x 9/16)	2		F551	5/16-18 Flange Top Lock Nut	4
33	8608-7	Hinge Plate, LH	1		F568	10-24 Flange Top Lock Nut	1
34	5103-7	Outside Torsion Bushing	2		F569	1/4-20 Flange Top Lock Nut	27
35	8607-4	Upper Arm	2		F612	10-24 x 5/8 Truss Head Torx	8
36	5214-12	Ball Joint (5/16-24)	4		F613	10-24 x 1/2 Truss Head Torx	11
37	5155-12	5/16 Ball Stud	2		F617	10-24 x 3/8 Truss Head Torx	4
38	5155-4	Gas Spring	2		F618	10-24 x 3/4 Truss Head Torx	6
39	8155-1	Gas Spring Cover, LH	1		F649	3/16 x .510/.625 Grip Range Rivet, SS	4
40	8607-3	Lower Arm	2		F654	3/16 x .510/.625 Grip Range Rivet	7
41	5103-6	Pivot Bushing Outer	2	*	Service Part Only		
42	5155-13	3/4 Ball Stud	2	**	This screen can be replaced by P/N 7512-11 Removable Screen (3/4" holes) for improved air flow performance in wet conditions.		
43	5523-6	Gas Spring Plate	2				
44	8608-10	Box Support, Gas Spring	2				
45	7532-1	Handle, Catcher Lift	2				



# ELECTRICAL ASSEMBLY

ITEM NO.	PART NO.	DESCRIPTION	NO. REQ'D	ITEM NO.	PART NO.	DESCRIPTION	NO. REQ'D
<b>Harness Assembly</b>				<b>Fasteners</b>			
1	7941-3	Boot, Circuit Breaker	1	F002		10-24 Keps Nut	10
2	7941-5	Circuit Breaker (7 Amp)	1	F004		1/4-20 Keps Nut	4
3	8990-1	Hourmeter (Global)	1	F009		5/16-18 Whiz Locknut	1
4	5835-3	Cable Clamp (1/2) .218 Hole	3	F019		1/4-20 ESNA Wing Nut	2
5	7834-2	Wire Saddle (2 Wires)	1	F025		10-24 x 3/8 PPHMS	2
6	6105-3	Harness Clip	1	F026		10-24 x 1/2 PPHMS	7
7	6104-12	Adapter Harness	1	F031		1/4-20 x 5/8 Hex Bolt	2
8	8960-15	Ignition Switch (With Keys) (Includes Items # 9, 10 & F349)	1	F032		1/4-20 x 3/4 Hex Bolt	2
9	8960-3	Key Set W/Umbrella	1	F050		1/4 SAE Washer	2
10	7854	Plastic Tip, Red	1	F061		1/4 Internal Star Lock Washer	1
11	8536-2	Warning Horn Assembly	1	F079		A/A66D Aluminum Pop Rivet	1
12	5942-8	Safety Switch (NO), Delta Side Mount	3	F093		5/16-18 x 1 Hex Bolt	1
13	5975-3	Cable Tie (50# x 7")	4	F129		10-24 x 1/2 PTHMS	1
14	6941-9	Relay Switch 30/40 Amp	3	F182		1/4 x 5/8 x 1/8 Washer	2
15	7948-6	Time Delay Module (.5 Second Delay)	1	F232		10-32 Keps Nut	2
16	7948-3	Time Delay Harness	1	F349		Washer .835 ID 1.122 OD, SS	1
17	8941	Circuit Breaker (30 Amp) Auto Reset / Sealed	1	F505		6-32 x 7/8 Hex Trim MS, SS	6
18	7941-10	Circuit Breaker Cap	1	F506		6-32 Nylock Nut	6
19	5832	Cable Clamp (1/2)	5	* Service Part Only			
20	6940-25	Wire Harness	1				
21	8012-6	Regulator Adapter Harness	1				
22	NS	Rectifier	*				
<b>Battery Assembly</b>							
23	8943	Battery Lead Wire (+)	1				
24	5975-1	Cable Tie (18# x 3-3/4")	3				
25	5933	Battery Terminal Insul., Red (+)	1				
26	5932	Battery Terminal Insul., Black (-)	1				
27	6923	Battery Cable (-)	1				
28	5844-3	Battery Hold-Down Bar	1				
29	5839	Hook Bolt	2				
30	6390-6	Battery Pan	1				
31	NS	Battery (12V/300 CCA/Wet/SP-35)	1				

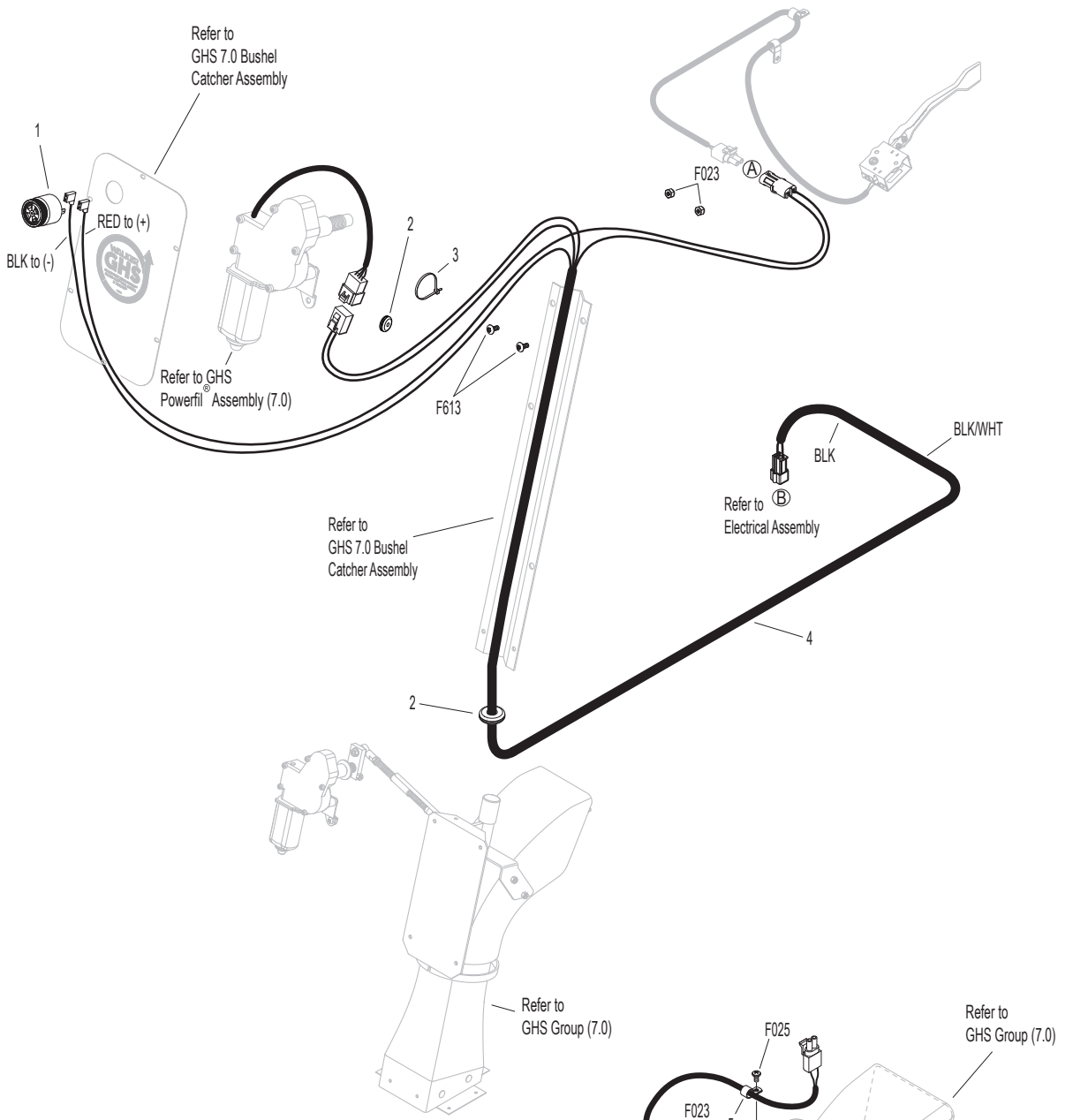
# ELECTRICAL ASSEMBLY



# ELECTRICAL ASSEMBLIES (GHS 7.0 BUSHEL COMPONENTS)

ITEM NO.	PART NO.	DESCRIPTION	NO. REQ'D	ITEM NO.	PART NO.	DESCRIPTION	NO. REQ'D
<b>Horn &amp; Harness Channel Assemblies</b>				<b>Fasteners</b>			
1	5536-2	Horn, Full Signal	*	F002		10-24 Keps Nut	1
2	5976-2	Grommet (3/16 x 3/4)	2	F023		10-24 ESNA Nut	3
3	5975-1	Cable Tie (18# x 3-3/4")	1	F025		10-24 x 3/8 PPHMS	1
<b>Harness &amp; Grass-Pak® Switch Assemblies</b>				F508		4-40 Keps Nut, SS	2
4	8950-4	Powerfil Wire Harness (7.0/10.0)	1	F612		10-24 x 5/8 Truss Head Torx	1
5	5833	Cable Clamp (1/4)	2	F613		10-24 x 1/2 Truss Head Torx	2
6	5594-7	Grass-Pak® Vane	1	F712		4-40 x 3/8 Hex Head, SS	2
7	5592-20	Grass-Pak® Switch Assembly	1	F713		Washer #4, SS	2
				*		Service Part Only	

# ELECTRICAL ASSEMBLIES (GHS 7.0 BUSHEL COMPONENTS)



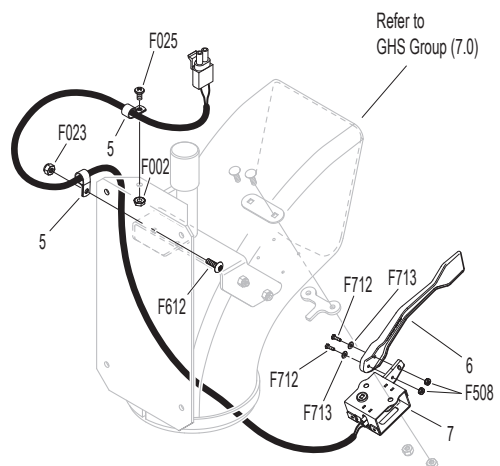
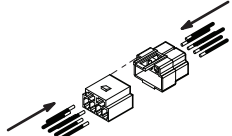
## DETAIL A



## DETAIL B



END VIEWS ARE SHOWN FROM BACK OF PLUG

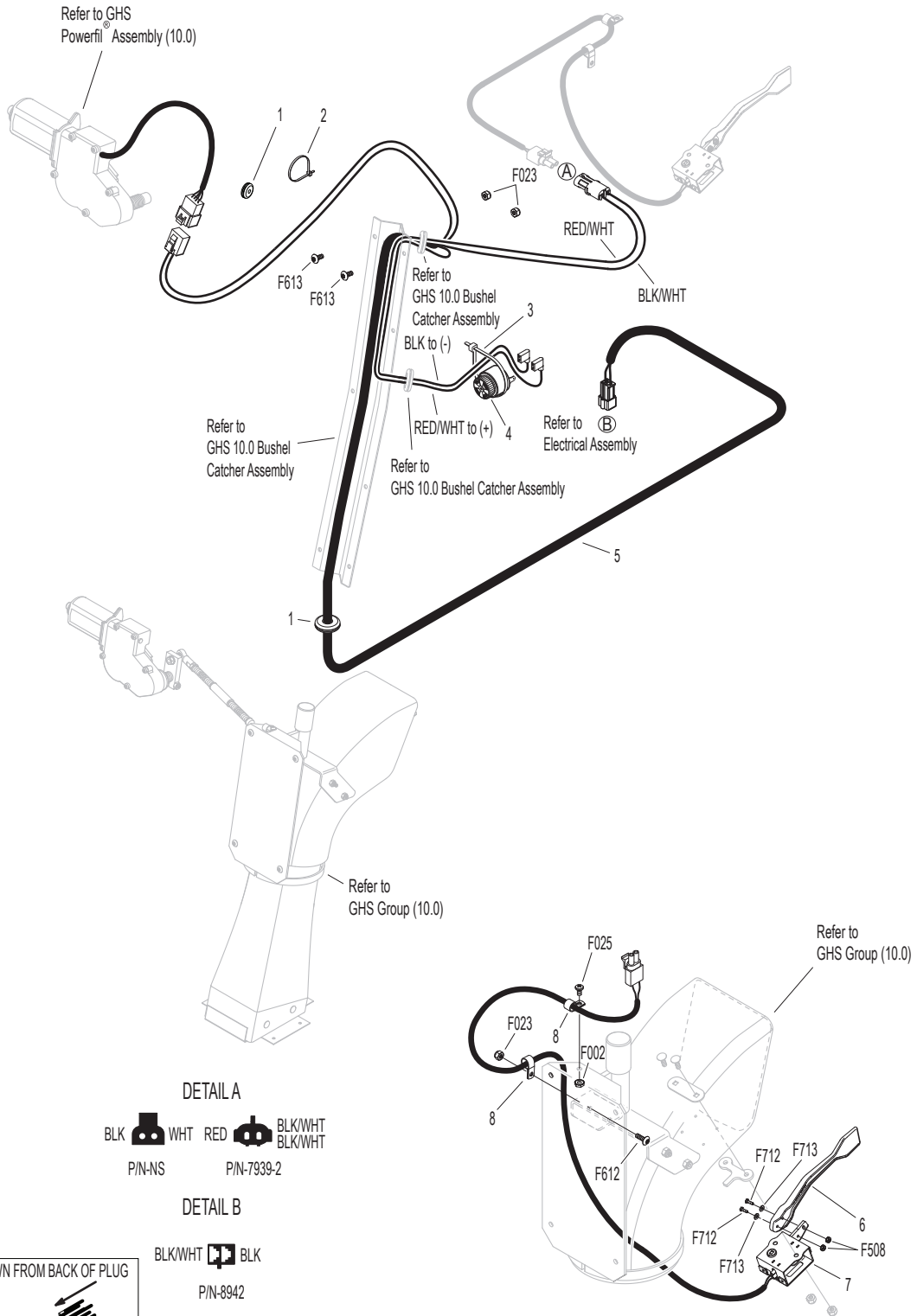


# ELECTRICAL ASSEMBLIES (GHS 10.0 BUSHEL COMPONENTS)

ITEM NO.	PART NO.	DESCRIPTION	NO. REQ'D	ITEM NO.	PART NO.	DESCRIPTION	NO. REQ'D
<b>Horn &amp; Harness Channel Assemblies</b>				<b>Fasteners</b>			
1	5977-2	Grommet, Cut (1/8 x 3/8)	2	F002		10-24 Keps Nut	1
2	5975-1	Cable Tie (18# x 3-3/4")	1	F023		10-24 ESNA Nut	3
3	5975-3	Cable Tie (50# x 7")	1	F025		10-24 x 3/8 PPHMS	1
4	5536-2	Horn, Full Signal	*	F508		4-40 Keps Nut, SS	2
<b>Harness &amp; Grass-Pak® Switch Assemblies</b>				F612		10-24 x 5/8 Truss Head Torx	1
5	8950-4	Powerfil® Wire Harness (7.0 / 10.0)	1	F613		10-24 x 1/2 Truss Head Torx	2
6	5594-7	Grass-Pak® Vane	1	F712		4-40 x 3/8 Hex Head, SS	2
7	5592-20	Grass-Pak® Switch Assembly	1	F713		Washer #4, SS	2
8	5833	Cable Clamp (1/4)	2	* Service Part Only			



# ELECTRICAL ASSEMBLIES (GHS 10.0 BUSHEL COMPONENTS)

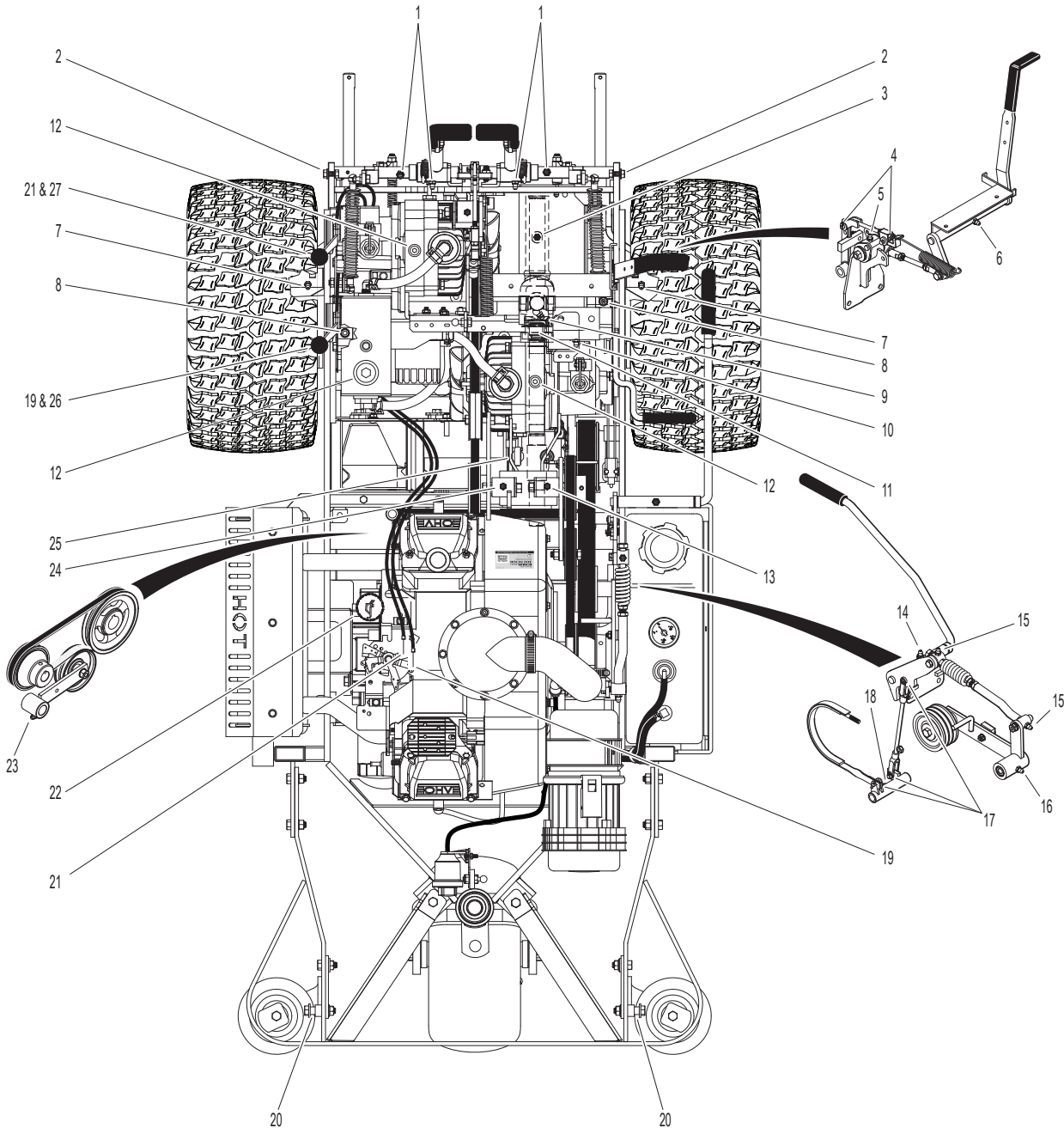


# LUBRICATION POINTS

ITEM NO.	LOCATION	LUBRICATION TYPE	NO. PLACES	ITEM NO.	LOCATION	LUBRICATION TYPE	NO. PLACES
<b>Lubrication Points</b>				17	Brake Actuator Rod and Brake Band Pivot Pins (Clevis)	Oil	3
1	Steering Lever Pivot	Grease	4	18	Brake Actuator Pivot	Grease	1
2	Body Hinge Point	Oil	2	19	Choke Control Cable Ends	Oil	2
3	Deck-to-PTO Coupling (Grease Spline Slide Area)	Grease	1	20	Catcher Hinge Point	Oil	2
4	FSC Actuator Rod Pivot Pins	Oil	2	21	Throttle Control Cable Ends	Oil	2
5	(FSC) Friction Body Pivot	Grease	1	22	Engine Dipstick / Oil Fill	Oil**	1
6	FSC Lever Pivot	Grease	1	23	Belt Tightener Pivot, Blower Drive	Grease	1
7	Deck Support Arm Pivot	Grease	2	24	Belt Tightener Pivot, Ground Drive	Grease	1
8	Gear Axle	Oil**	2	25	PTO Gearbox Dipstick	Oil**	1
9	Universal Joint Tube Assembly	Grease*	1	26	Choke Control Pivot	Oil	1
10	Parking Brake Lever Pivot	Grease	1	27	Throttle Control Pivot	Oil	1
11	Universal Joint Quick Connect Spline (Grease Slide Area)	Grease	1				
12	Hydrostatic Drive / Oil Reservoir	Oil**	3	*	Grease every 25 hours.		
13	Belt Tightener Pivot, Jackshaft Drive	Grease	1	**	See <b>Operator's Manual</b> for procedure for checking and changing oil in Engine Crankcase, Hydrostatic Transmissions, and Gear Axles.		
14	PTO Clutch Lever Pivot	Grease	1				
15	Clutch Actuator Push Rod	Grease	2				
16	Belt Tightener Pivot, PTO Clutch	Grease	1				

**NOTE:** See Model C19 **Operator's Manual** (P/N 6000-40) for proper lubrication intervals.

# LUBRICATION POINTS



Model C19 Beginning S/N 187255  
Use only genuine Walker® replacement parts.

# WIRING SCHEMATIC

## WALKER MODEL C19 Beginning S/N 2018-154743

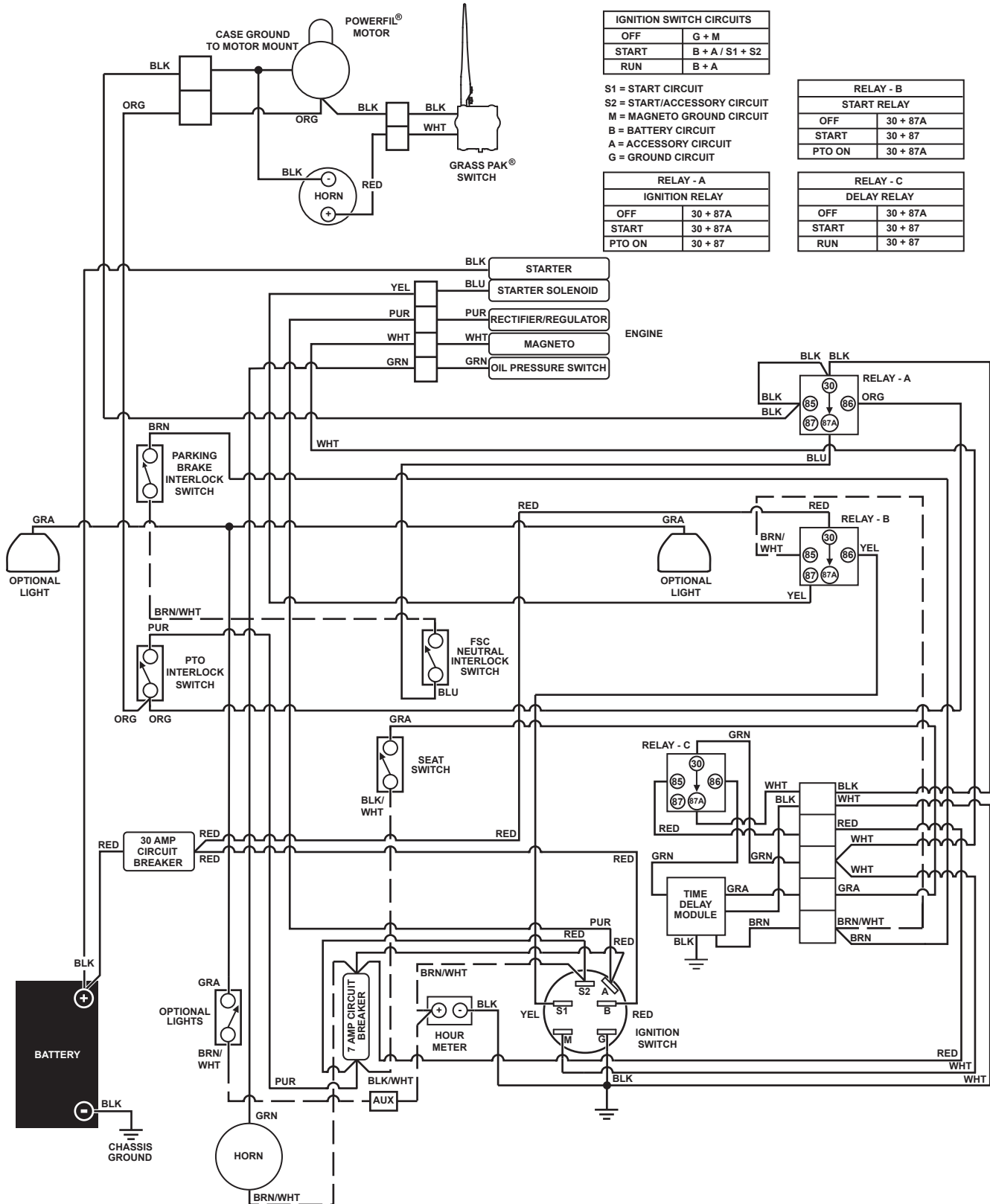
IGNITION SWITCH CIRCUITS	
OFF	G + M
START	B + A / S1 + S2
RUN	B + A

S1 = START CIRCUIT  
S2 = START/ACCESSORY CIRCUIT  
M = MAGNETO GROUND CIRCUIT  
B = BATTERY CIRCUIT  
A = ACCESSORY CIRCUIT  
G = GROUND CIRCUIT

RELAY - A IGNITION RELAY	
OFF	30 + 87A
START	30 + 87A
PTO ON	30 + 87

RELAY - B START RELAY	
OFF	30 + 87A
START	30 + 87
PTO ON	30 + 87A

RELAY - C DELAY RELAY	
OFF	30 + 87A
START	30 + 87
RUN	30 + 87







# LIMITED WARRANTY FOR WALKER COMMERCIAL RIDER MOWER

## 1. WHAT THIS WARRANTY COVERS, AND FOR HOW LONG:

Walker Manufacturing company will, at its option, repair or replace, without charge, any part covered by this warranty which is found to be defective in material and/or workmanship within two (2) years\* after the date of sale to the original retail purchaser unless the product is used for rental purposes, in which case this warranty is limited to ninety (90) days. At Walker's request, customer will make the defective part available for inspection by Walker and/or return the defective part to Walker, transportation charges prepaid. All parts and components of the Walker Mower are covered by this warranty **except** the following components which are warranted separately by their respective manufacturers:

Kohler Engine

Battery

The available warranties covering these items are furnished with each mower. Walker does not assume any warranty obligation, liability or modification for these items, which are covered exclusively by the stated warranty of the respective manufacturers noted above.

\* Extended warranties are offered for the following powertrain components:

- A three (3) year unlimited hour warranty is offered for the Walker P/N 6200-9 Gear Axle Assembly.
- A three (3) year or 3000 hour (whichever comes first) warranty is offered for Danfoss Model 7 Hydrostatic transmissions; covers full cost of replacement up to 1000 hours of use, and after 1000 hours warranty coverage is prorated against 3000 hours. If the transmissions are serviced at the recommended intervals by an authorized Walker Dealer using only Mobil SHC™ 630 oil (P/N 6450-20) and Walker filters (P/N 5024-13), the warranty will be extended to three (3) years, full replacement coverage, and unlimited hours.

## 2. WHAT THIS WARRANTY DOES NOT COVER:

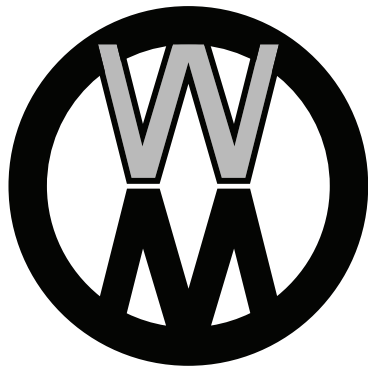
- A. This warranty does not cover defects caused by depreciation or damage caused by normal wear, accidents, improper maintenance, improper use or abuse of the product, alterations, or failure to follow the instructions contained in the Operator's Manual for operation and maintenance.
- B. The customer shall pay any charges for making service calls and/or for transporting the mower to and from the place where the inspection and/or warranty work is performed.

## 3. HOW TO OBTAIN SERVICE UNDER THIS WARRANTY:

Warranty service can be arranged by contacting the dealer where you purchased the mower or by contacting Walker Manufacturing Company, 5925 East Harmony Road, Ft. Collins, CO 80528. Proof of the date of purchase may be required to verify warranty coverage.

## 4. WARRANTY LIMITATION:

- A. **THERE IS NO OTHER EXPRESS WARRANTY. ANY WARRANTY THAT MAY BE IMPLIED FROM THIS PURCHASE INCLUDING MERCHANTABILITY AND FITNESS FOR A PARTICULAR PURPOSE IS HEREBY LIMITED TO THE DURATION OF THIS WARRANTY AND TO THE EXTENT PERMITTED BY LAW ANY AND ALL IMPLIED WARRANTIES ARE EXCLUDED.** Some states do not allow limitations on how long an implied warranty lasts, so the above limitations may not apply to you.
- B. **WALKER WILL NOT BE LIABLE FOR ANY INCIDENTAL, CONSEQUENTIAL, OR SPECIAL DAMAGES AND/OR EXPENSES IN CONNECTION WITH THE PURCHASE OR USE OF THE MOWER.** Some states do not allow the exclusion or limitation of incidental or consequential damages, so the above limitation(s) or exclusion(s) may not apply to you.
- C. Only the warranty expressed in this limited warranty shall apply and no dealer, distributor, or individual is authorized to amend, modify, or extend this warranty in any way. Accordingly, additional statements such as dealer advertising or presentations, whether oral or written, do not constitute warranties by Walker, and should not be relied upon.
- D. This warranty gives you specific legal rights, and you may also have other rights which vary from state to state.



**WALKER**

**WALKER MFG. CO. • 5925 E. HARMONY ROAD, FORT COLLINS, CO 80528 • (970) 221-5614**  
**FORM NO. 032524      PRINTED IN USA      [www.walker.com](http://www.walker.com)      ©2024 WALKER MFG. CO**