

# WALKER

## Illustrated Parts Manual

### C19i



Beginning S/N: 134494  
Effective Date: 5.20.15  
P/N 6000-18

# KEY TO ABBREVIATIONS USED IN THIS MANUAL

<i>Abbreviation</i>	<i>What it Represents</i>
° (Dimension)	Degrees (Angle)
" (Dimension)	inches
(-)	Negative (Polarity)
(+)	Positive (Polarity)
AT	All-Terrain
CCW	Counter-clockwise
Conn	Connector
CW	Clockwise
D	Diameter
DC	Deck, Collection (number refers to size in inches)
DM	Deck, Mulching (number refers to size in inches)
DR	Deck, Rear Discharge (number refers to size in inches)
DS	Deck, Side Discharge (number refers to size in inches)
DU	Garlock (Bearing)
ESNA (Fastener)	Nylon Insert Locknut
FSC	Forward Speed Control
GA	Gauge
gal	gallon
GHS	Grass Handling System
GR (Fastener)	Grade
HD	Heavy Duty
HP	Horse Power
ID	Identification or Inside Diameter
L	Length
LH	Left Hand (orientated with operator on seat)
LP	Low Profile
mm (Dimension)	millimeters
MS (Fastener)	Machine Screw
NS (as part number)	Item is not sold by Walker Manufacturing
OD	Outside Diameter
oz	ounce
PFH (Fastener)	Phillips Flat Head
P/N	Part Number
PPH (Fastener)	Phillips Pan Head
PTH (Fastener)	Phillips Truss Head
PTO	Power Take-Off
QKS	Quick Slide
qt	quart
RH	Right Hand (orientated with operator on seat)
SAE (Fastener)	Society of Automotive Engineers
SBH (Fastener)	Socket Button Head (Bolt)
SFH (Fastener)	Slotted Flat Head
SHC (Fastener)	Socket Head Cap
SHL (Fastener)	Shoulder (Bolt)
SM (Fastener)	Sheet Metal (Screw)
S/N	Serial Number
Spg	Spring
SQH (Fastener)	Square Head
SS (Fastener)	Stainless Steel
ST (Fastener)	Self-Tapping (Screw)
Term	Terminal
V	Volts
VLR	Very Low Restriction

**NOTE:** In some instances, combinations of abbreviations may be used (e.g. PPHMS - Phillips Pan Head Machine Screw).

Beginning S/N 134494

Effective Date 05-20-15

Use only genuine **Walker**<sup>®</sup> replacement parts.

# ILLUSTRATED PARTS LIST

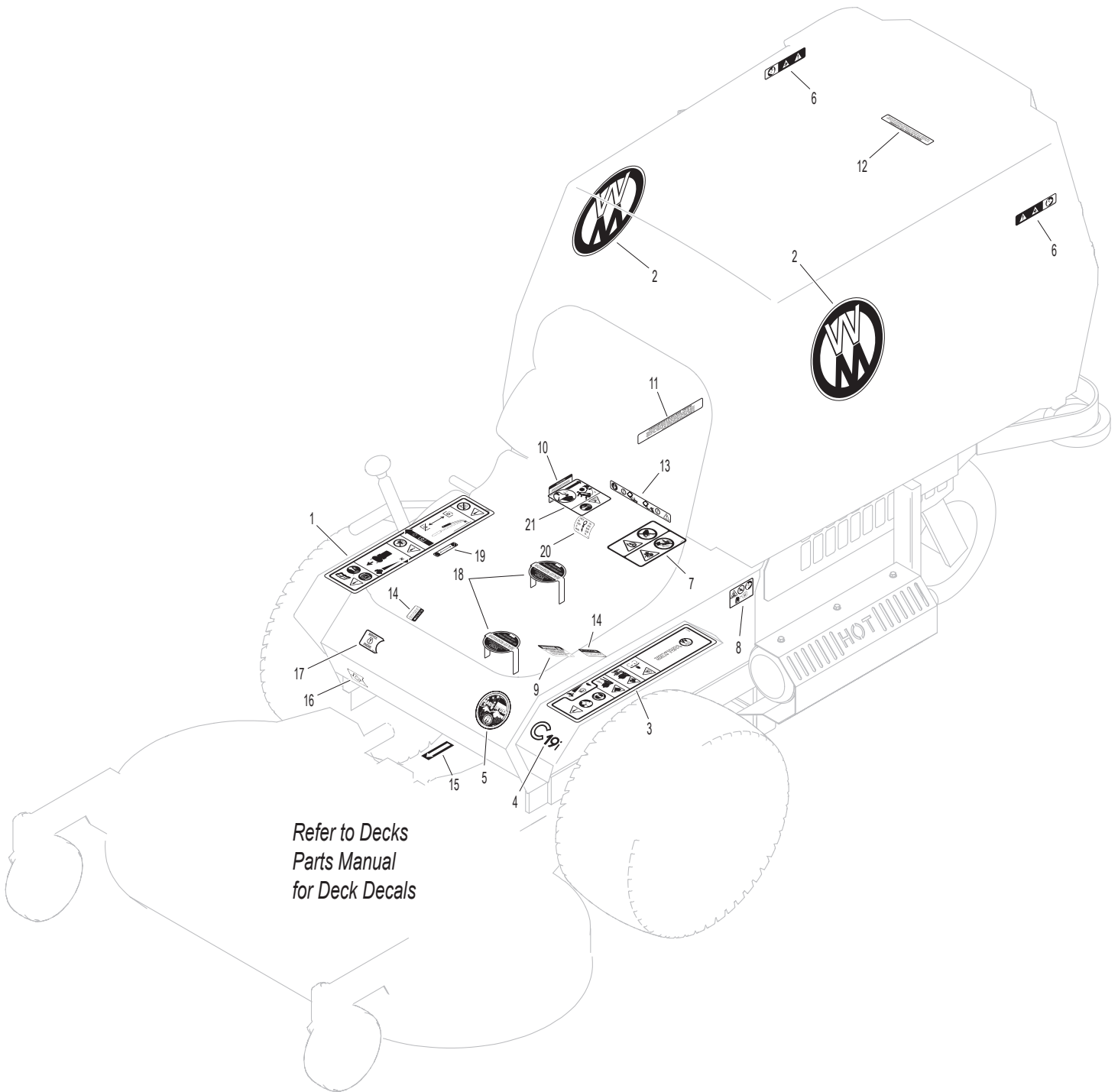
<i>Section of Tractor Covered</i>	<i>Page</i>	<i>Section of Tractor Covered</i>	<i>Page</i>
<b>Decals</b>		<b>Electrical Components</b>	
Tractor Decals .....	2	Electrical Assembly .....	28
<b>Body / Chassis Assemblies</b>		Electrical Assemblies (GHS 7.0 Bushel Components).....	30
Body / Chassis Assembly .....	4	Electrical Connectors.....	32
Rear Body Assembly.....	6	<b>Maintenance</b>	
<b>Tractor Components</b>		Lubrication Points .....	34
Main Component Power Transmission .....	8	Wiring Schematic.....	36
Engine Group.....	10	<b>Warranty</b>	
Engine Group (Fuel Components) .....	12	Limited Warranty.....	37
Hydrostatic Ground Drive Assemblies.....	14		
Steering Control Assemblies.....	16		
Throttle Control Assembly.....	18		
Parking Brake Assembly .....	20		
GHS Group .....	22		
GHS Powerfil® Assembly (7.0) .....	24		
GHS 7.0 Bushel Catcher Assembly.....	26		

# TRACTOR DECALS

ITEM NO.	PART NO.	DESCRIPTION	LOCATION	NO. REQUIRED
<b>Walker Product and Operation Decals</b>				
1	8600-33	RH Fender	Body, RH Near Seat	1
2	5800-11	Walker (8" Round)	7.0 Bushel Catcher (one on each side)	2
3	8600-37	LH Fender	Body, LH Near Seat	1
4	8821-18	Decal, C19i	Body	1
5	5856-1	Made in USA	Body	1
<b>Danger Decals Warning Decals Caution Decals</b>				
6	8600-10	Danger, Pinch Point	7.0 Bushel Catcher Mounting Frame Assembly (one on each side)	2
7	8600-4	Danger, Rotating Blower Blades	Body, Near Body Chute	1
8	8600-12	Danger, Engine Exhaust	Front Body, LH Side	1
9	5810-3	Decal, Hydro Warning	LH Gear Axle Drive Assembly	1
<b>Maintenance Decals</b>				
10	5082-5	Fuel Recommendations	Front Body, RH Side	1
11	5855	Important, Engine Cooling	Engine	1
12	5869	Removable Screen	7.0 Bushel Catcher Removable Screen	1
13	8600-16	Front Body Closure	Rear Cross Member, Body	1
14	5810-1	Axle Oil Level	Gear Axle Drive Assemblies (one on each)	2
15	6875	PTO Alignment Arrow	Universal Joint Tube Assembly	1
16	6807-1	Oil Pressure	Body	1
17	5802-3	Engine Service Light	Body	1
18	NS	Sealed Reservoir	Hydrostatic Drives (one on each)	2
19	8600-30	Parking Brake	Body, RH Side Below Seat	1
20	7827	Oil Level	Jackshaft Support	1
21	8600-23	Body Latch Decal	Body, RH Side Below Seat	1

**NOTE:** All parts requiring decals are shipped with decals applied.

# TRACTOR DECALS



# BODY / CHASSIS ASSEMBLY

ITEM NO.	PART NO.	DESCRIPTION	NO. REQ'D	ITEM NO.	PART NO.	DESCRIPTION	NO. REQ'D
<b>Seat Assembly</b>				37	5038-1	Axle Spacer Tube (6-5/8)	1
1	5103	Seat	1	38	6307-2	Chassis Frame	1
2	7223-4	Compression Spring	2	39	5075-1	LP Wheel & Tire (18 x 8.50-10)	2
3	7846	Washer (3/8 ID x 1-1/4 OD x 1/8)	2		5075-2	LP Tire (18 x 8.50-10)	*
4	5841-1	Retainer Washer	2		5075-5	LP Wheel (10 x 7)	*
5	7845-1	Rubber Bumper (1.375 x .750)	2		5033-6	Wheel & Tire (18 x 7.00-8)	**
6	7440-5	Shock Mount (1-1/4 x 3/4)	2		5030-6	Standard Tire (18 x 7.00-8)	*
<b>Rear Bumper Assembly</b>					5031-2	Standard Wheel (8 x 5.5)	*
7	7516-5	Catcher Pivot Bushing	2		5030-4	Tire Tube (18 x 8.50-8)	*
8	5517-8	7.0 Rear Bumper	1	<b>Fasteners</b>			
9	7517-2	Catcher Pivot Plate	2		F002	10-24 Keps Nut	4
10	5162	Roller Wheel (5" Rubber)	2		F004	1/4-20 Keps Nut	2
<b>Body Assembly</b>					F005	1/4-20 ESNA Nut	1
11	2505	Leaf Spring	1		F009	5/16-18 Whiz Locknut	9
12	5845	Rubber Bumper (1.50 OD x 1.25)	4		F012	3/8-16 Keps Nut	8
13	NS	Body ID Plate	1		F013	3/8-16 Whiz Locknut	2
14	7383-3	Body Latch Hook (2-1/2 Side Bars)	1		F014	3/8-16 ESNA Nut	4
15	7854	Plastic Tip, Red	1		F016	1/2-13 Self-Locking Nut	1
16	5989-12	Dome Plug (3/16)	1		F020	5/16-18 ESNA Nut	1
17	5989-10	Dome Plug (9/16)	1		F025	10-24 x 3/8 PPHMS	4
18	8118	Heat Deflector	1		F029	1/4-20 x 1/2 Hex Bolt	2
19	5989-3	Dome Plug (5/16)	4		F031	1/4-20 x 5/8 Hex Bolt	1
20	5989-4	Dome Plug (3/8)	3		F038	3/8-16 x 1 Hex Bolt	6
21	6100-24	Front Body	1		F040	3/8-16 x 1-1/2 Hex Bolt	2
22	5146	10mm Ball Stud	2		F042	3/8-16 x 2-1/4 Hex Bolt	2
23	2145	Gas Spring Assembly (Includes Item # 22)	1		F048	1/2 SAE Washer	2
24	5180	Edge Molding, Lever Opening	2		F050	1/4 SAE Washer	1
<b>Tilt-Up Latch Assembly***</b>					F051	3/8 SAE Washer	2
25	5847	Plastic Tip	1		F059	3/8 Wave Spring Washer	2
26	5744-20	Spring Arm, Tilt-Up Latch	1		F093	5/16-18 x 1 Hex Bolt	1
27	5744-10	Spring Pivot Bushing	1		F151	3/8-16 x 7/8 Hex Bolt	2
28	5744-15	Compression Spring (3/8 x 5/8)	1		F157	1/2-20 x 1-1/4 Wheel Lug Bolt	8
29	5744-13	Mount Angle, LH	1		F183	.312 x .700 x .074 Washer	2
30	5744-12	Hook, Tilt-Up Latch	1		F206	#2 x 3/16 Drive Pin	2
31	5744-14	Mount Angle, RH	1		F227	3/8 x 1-1/4 x 1/8 Plastic Washer	2
<b>Chassis Assembly</b>					F241	.375 x .875 x .10 Washer	4
32	5267-1	Retainer Collar (1") (Includes Item # F413)	1		F257	3/8 x 1-11/16 Shoulder Bolt	2
33	5270-1	Pivot Bearing	2		F292	1/2-13 x 8-1/2 Hex Bolt, GR 2	1
34	5420-2	Tail Wheel Fork	1		F341	Coil Roll Pin (7/64 x 9/16)	1
35	5037-1	Bearing, Tail Wheel	2		F342	5/16 Conical Washer	2
36	5035	Tail Wheel & Tire Assembly (13 x 6.50-6)	1		F413	5/16-24 x 5/16 Set Screw	2
	5035-1	Tail Wheel Tire (13 x 6.50-6)	*	* Service Part Only			
	5036	Tail Wheel & Hub (6 x 4.5)	*	** May be ordered as a factory-installed option or for dealer installation. Narrow Drive Tires are used when installing a 36" Deck. Contact your Walker dealer.			
				*** Complete Tilt-Up Latch Kit available by ordering kit P/N 5747.			

Beginning S/N 134494

Effective Date 05-20-15

Use only genuine **Walker**® replacement parts.

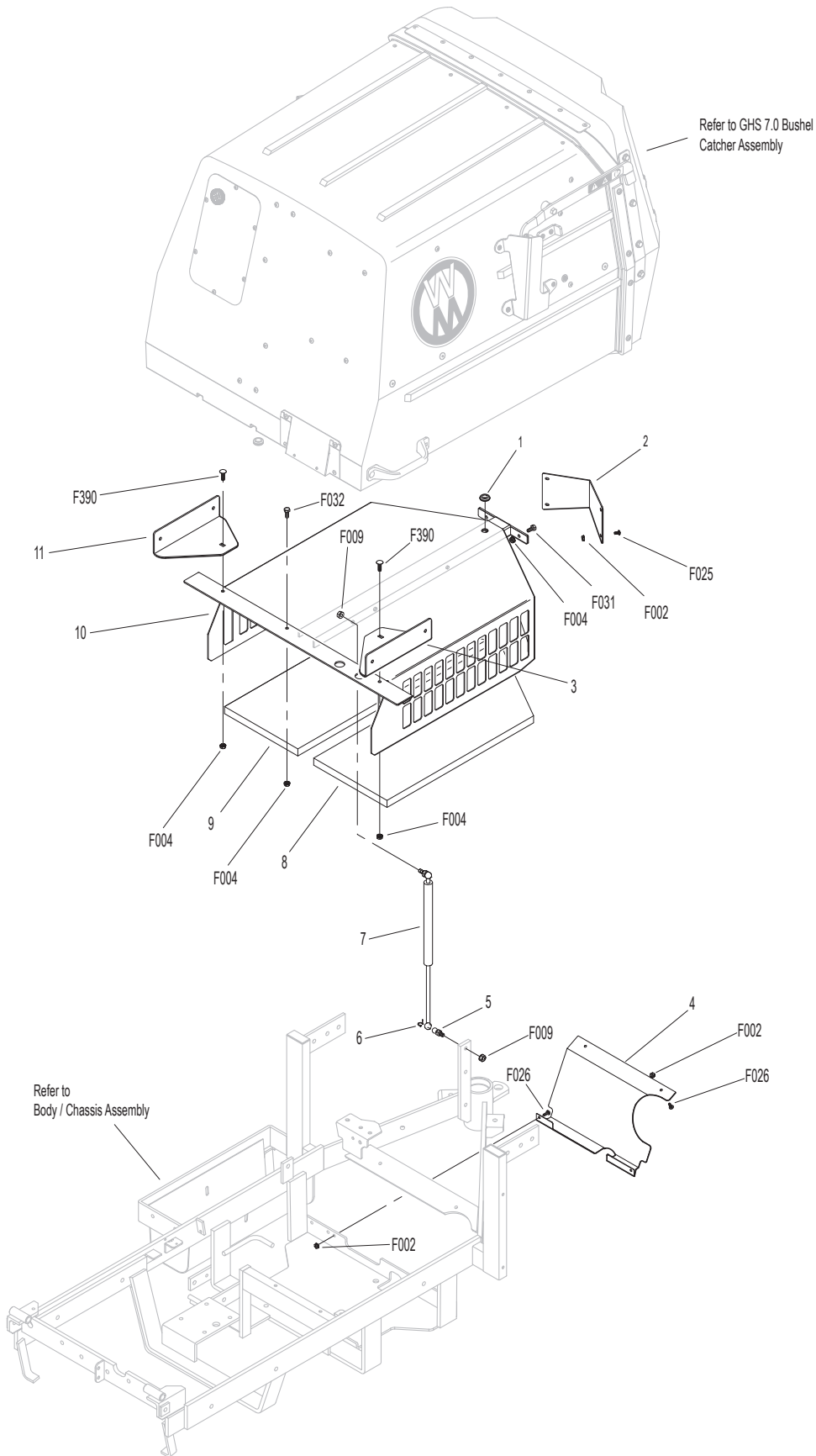


# REAR BODY ASSEMBLY

ITEM NO.	PART NO.	DESCRIPTION	NO. REQ'D	ITEM NO.	PART NO.	DESCRIPTION	NO. REQ'D
<b>Rear Body Assembly</b>				<b>Fasteners</b>			
1	5976-2	Grommet (3/16 x 3/4)	1	F002		10-24 Keps Nut	8
2	5105-1	Rear Body Cover	1	F004		1/4-20 Keps Nut	5
3	8515-14	Catcher Handle Plate, RH	1	F009		5/16-18 Whiz Locknut	2
4	8389-4	Splash Guard	1	F025		10-24 x 3/8 PPHMS	4
5	7146	13mm Ball Stud	2	F026		10-24 x 1/2 PPHMS	4
6	7147	Spring Clip	2	F031		1/4-20 x 5/8 Hex Bolt	2
7	7145	Gas Spring Assembly (Includes Items # 5 & 6)	1	F032		1/4-20 x 3/4 Hex Bolt	1
8	7190-1	Insulation Foam Pad, LH	1	F390		1/4-20 x 7/8 Carriage Bolt	2
9	7190-2	Insulation Foam Pad, RH	1	<b>NOTE:</b> Rear Bumper Assembly for GHS Models is not shown here. Refer to <b>BODY / CHASSIS ASSEMBLY</b> , Page 4.			
10	5105	Rear Body Panel	1				
11	8515-13	Catcher Handle Plate, LH	1				



# REAR BODY ASSEMBLY

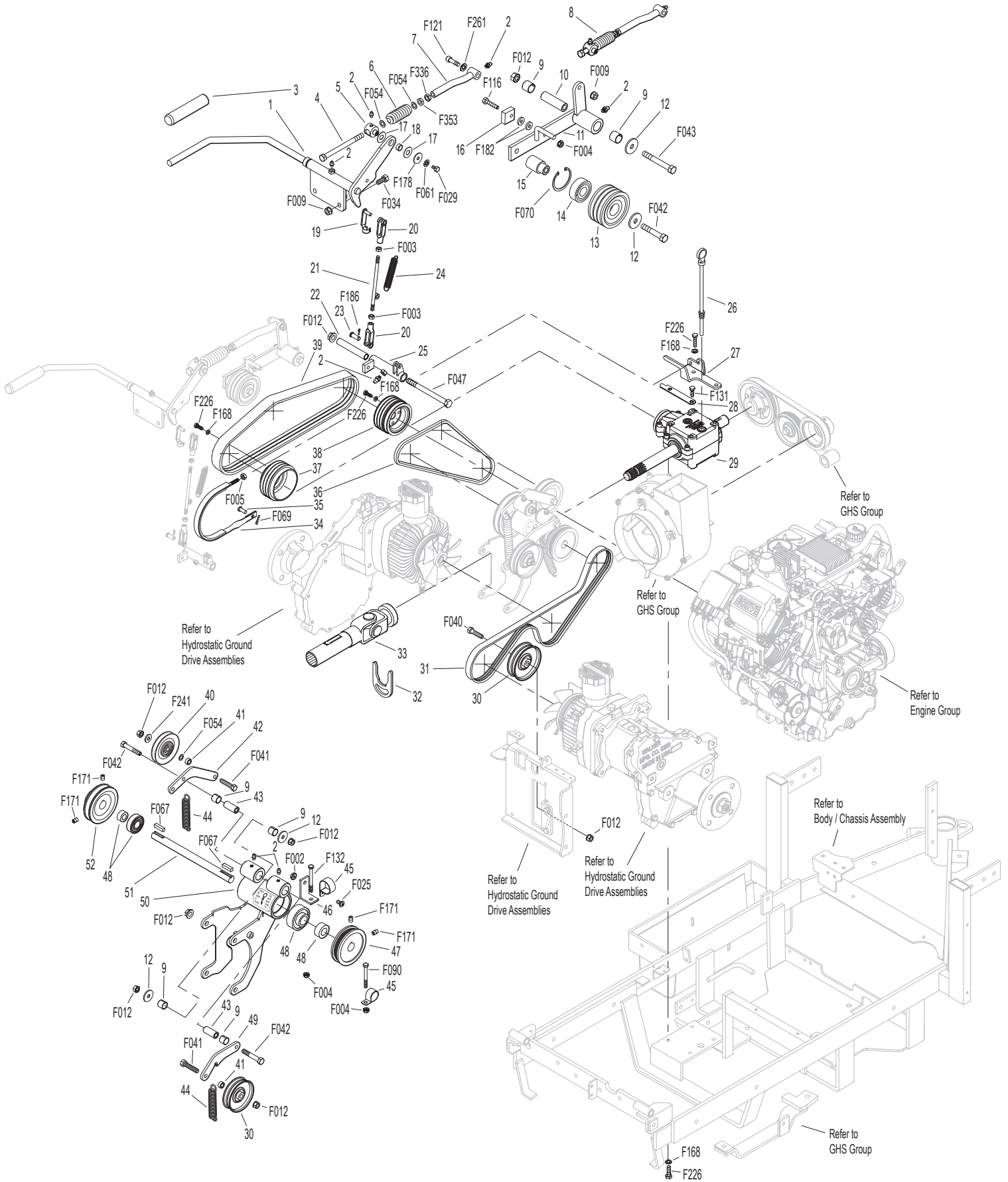


Beginning S/N 134494  
Effective Date 05-20-15  
Use only genuine **Walker**® replacement parts.

# MAIN COMPONENT POWER TRANSMISSION

ITEM NO.	PART NO.	DESCRIPTION	NO. REQ'D	ITEM NO.	PART NO.	DESCRIPTION	NO. REQ'D
<b>Clutch Lever Assembly</b>				44	5221-1	Extension Spring (3/4 x 5)	2
1	8358-3	Clutch Lever (Includes Items # 2 & 3)	1	45	7833	Cable Clamp (7/8 x 1/4)	2
2	5830	Grease Fitting	7	46	8539	Starter Relay Mount	1
3	4850	Handle Grip, Black	1	47	7241-2	Transmission Drive Pulley (3-1/4MV) (Includes Items # F067 & F171)	1
4	7303-10	Clutch Actuator Bolt (3/8)	1	48	5268	Bearing with Collar (3/4)	2
5	7380-5	Knuckle Joint (3/8 ID)	1	49	8349	Transmission Belt Tightener Arm	1
6	7226-10	Compression Spring (3/4 x 2-1/2)	1	50	8393-7	Hydro Jackshaft Mount	1
7	8130-5	Pushrod, Clutch Actuator (Threaded Tube) (Includes Item # 2)	1		8394-1	Hydro Jackshaft Mount Assembly (Includes Items # 2, 9, 43, 48, 50 & 51)	*
8	8130-10	Clutch Actuator Rod Assembly (Includes Items # 2, 4-7, F054, F336 & F353)	1	51	8273	Jackshaft (3/4 x 7-1/2)	1
9	7201-3	Fiberglide Bearing	6	52	7240-4	Jackshaft Drive Pulley (3.3/3V) (Includes Items # F067 & F171)	1
10	7201-5	Inner Race (2-1/4)	1	<b>Fasteners</b>			
11	8368	PTO Belt Tightener	1		F002	10-24 Keps Nut	1
12	5841	Retainer Washer (3/8 x 1-1/4)	4		F003	1/4-28 Hex Nut	2
13	8243-1	Clutch Idler Pulley	1		F004	1/4-20 Keps Nut	3
	8243	Clutch Idler Pulley Assembly (Includes Items # 13-15 & F070)	*		F005	1/4-20 ESNA Nut	1
14	5265	Bearing (3/4)	1		F009	5/16-18 Whiz Locknut	3
15	8243-3	Hub, Idler Pulley	1		F012	3/8-16 Keps Nut	8
16	8375	PTO Belt Tightener Stop	1		F025	10-24 x 3/8 PPHMS	1
17	7377	Plastic Washer (1 x .438 x .025)	2		F029	1/4-20 x 1/2 Hex Bolt	1
18	7378	Pivot Bearing (7/16 x 9/16)	1		F034	5/16-18 x 3/4 Hex Bolt	2
19	5281-1	Clevis Spring Pin	1		F040	3/8-16 x 1-1/2 Hex Bolt	1
20	5280	Clevis (1/4)	2		F041	3/8-16 x 1-3/4 Hex Bolt	2
21	8305	Brake Actuator Rod	1		F042	3/8-16 x 2-1/4 Hex Bolt	3
22	8370	Bearing, Brake Actuator	1		F043	3/8-16 x 3 Hex Bolt	1
23	5281-5	Clevis Pin (1/4 x 0.80)	1		F047	3/8-16 x 4-1/2 Hex Bolt	1
24	8250	Brake Spring (1/2 x 2-1/2)	1		F054	AN960616 Washer	3
25	8369	Brake Actuator (Includes Items # 2 & 22)	1		F061	1/4 Internal Star Lock Washer	1
<b>PTO Drive Shaft Assembly</b>					F067	3/16 x 3/16 x 1 Key	2
26	7050-1	Dipstick, Gearbox	1		F069	3/32 x 1/2 Cotter Pin	1
27	8371-1	Mount Bracket, Brake Band	1		F070	1-3/4 Internal Snap Ring	1
28	8377	Brake Band Guide	1		F090	1/4-20 x 2-1/2 Hex Bolt	1
29	8050-11	PTO Gearbox / Flange Pulley	1		F116	1/4-20 x 1-1/4 Hex Bolt	1
30	5245	Idler Pulley (3")	2		F121	5/16-18 x 3/8 x 1 SHL Bolt	1
31	7248	Ground Drive Belt, Micro-V	1		F131	5/16-18 x 1/2 Hex Bolt	2
32	7275-9	Quick Coupler Installation Tool	**		F132	1/4-20 x 2-3/4 Hex Bolt	1
33	7275-16	Universal Joint Tube Assembly (Spline)	1		F168	5/16 Split Lock Washer	14
34	8304	Brake Band (14-1/2)	1		F171	5/16-18 x 3/8 Set Screw	4
35	7523-2	Clevis Pin W/Hole (1/4 x 5/8)	1		F178	1/4 x 1 Fender Washer	1
36	6250-1	Drive Belt (3VX370)	1		F182	1/4 x 5/8 x 1/8 Washer	2
37	7236-1	PTO Drive Pulley (4-1/2/3V) (Includes Items # F168 & F226)	1		F186	5/64 x 1/2 Cotter Pin	1
38	8237-2	Engine Pulley, Bolt On (4/3.8/3V) (Includes Items # F168 & F226)	1		F226	5/16-18 x 7/8 Hex Bolt	14
39	8230	Engine PTO Belt	1		F241	.375 x .875 x .10 Washer	1
<b>Jackshaft Assembly</b>					F261	AN960616L Washer	1
40	7245-1	Idler Pulley (3/8 Groove)	1		F336	3/8-16 Jam Nut	1
41	6325-2	Spacer Bushing (5/16)	2		F353	3/8-16 ESNA LP Nut	1
42	8349-2	Idler Arm	1	* Service Part Only			
43	7201-4	Inner Race (1-1/2)	2	** The Quick Coupler Installation Tool is used to assist the installation of the Quick Coupler Tube and PTO Shaft connection by holding the disconnect ring in the retracted position when joined to the tractor spline shaft on the PTO gearbox.			

# MAIN COMPONENT POWER TRANSMISSION

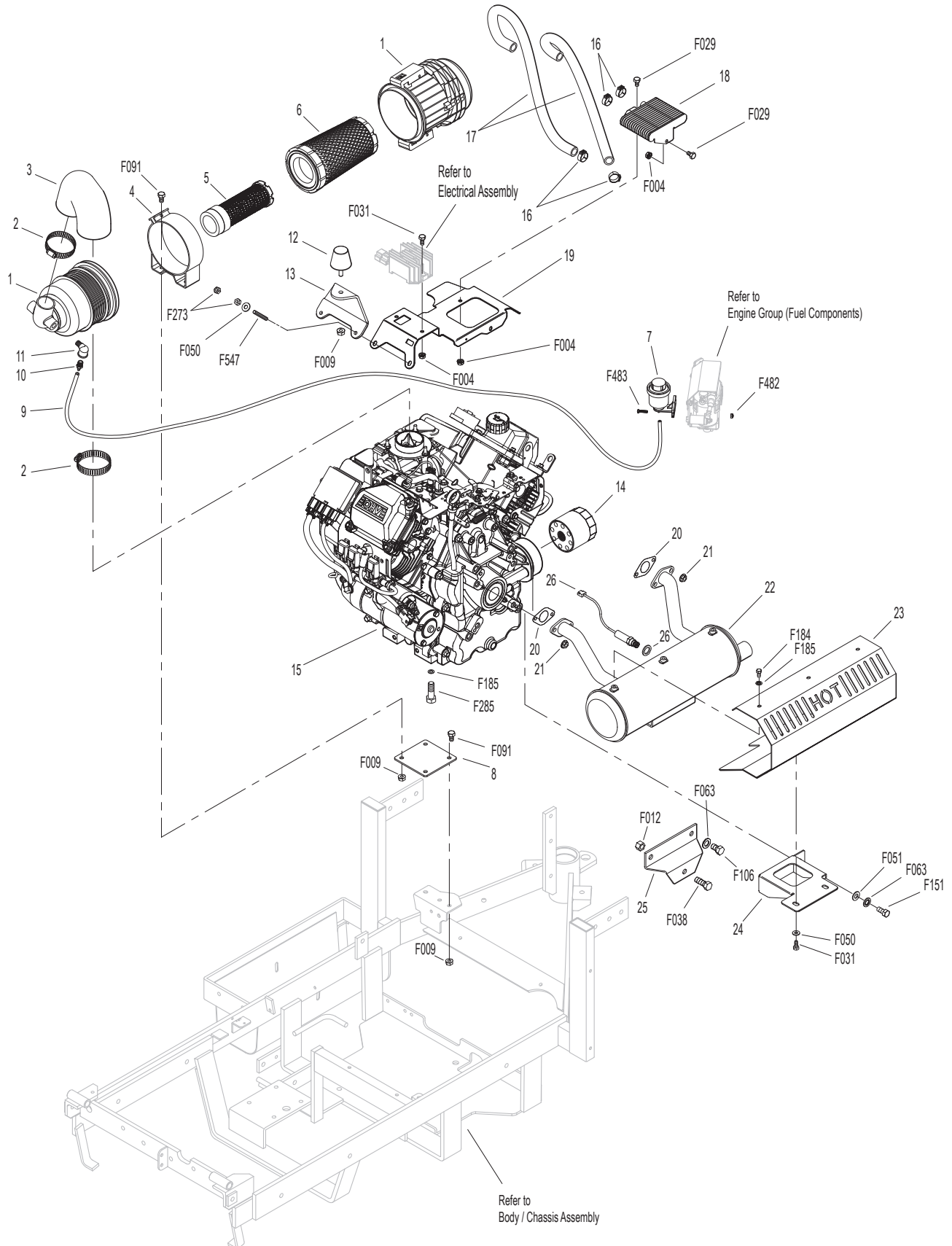


Beginning S/N 134494  
 Effective Date 05-20-15  
 Use only genuine **Walker**® replacement parts.

# ENGINE GROUP

ITEM NO.	PART NO.	DESCRIPTION	NO. REQ'D	ITEM NO.	PART NO.	DESCRIPTION	NO. REQ'D
<b>Precleaner Assembly</b>				<b>Fasteners</b>			
1	4090	Air Cleaner Assembly (90 Deg.) (Includes Items # 4, 8-11, F009 & F091)	*	F004		1/4-20 Keps Nut	2
2	6029	Hose Clamp (1-3/4 to 2-1/4)	2	F009		5/16-18 Whiz Locknut	5
3	6087-5	Air Intake Hose	1	F012		3/8-16 Keps Nut	2
4	NS	Air Cleaner Band	1	F029		1/4-20 x 1/2 Hex Bolt	2
5	5090-5	Safety Filter Insert, VLR	1	F031		1/4-20 x 5/8 Hex Bolt	4
6	5090-4	Air Cleaner Cartridge, VLR	1	F038		3/8-16 x 1 Hex Bolt	1
7	5091-6	Air Flow Indicator W/Bracket	1	F050		1/4 SAE Washer	4
8	7334-3	Air Cleaner Bracket	1	F051		3/8 SAE Washer	2
9	M258	Vacuum Hose (17")	1**	F063		3/8 Internal Star Lock Washer	4
10	5091-0	1/8 Pipe Thread Male W/Barb	1	F091		5/16-18 x 5/8 Hex Bolt	4
11	5091-16	Street Elbow 90' (1/8 x 1/8)	1	F106		3/8-16 x 5/8 Hex Bolt	2
<b>Engine Assembly</b>				F151		3/8-16 x 7/8 Hex Bolt	2
12	5845	Rubber Bumper (1.50 x 1.25)	1	F184		1/4-20 x 1/2 Hex Bolt, SS	3
13	8010-2	Engine Bumper Mount	1	F185		1/4 Internal Star Lockwasher, SS	7
14	NS	Oil Filter (Kohler 2805001)	1	F273		M6 x 1.0 Nut	2
15	NS	19 HP Kohler Engine	1	F285		1/2-13 x 1-1/2 Hex Bolt	4
<b>Remote Oil Cooler Assembly</b>				F482		8-32 Nylock Nut	2
16	NS	Clamp (Kohler 25 237 02-S)	4	F483		8-32 x 3/4 PPHMS	2
17	NS	Oil Cooler Hose (Kohler 24326127)	2	F547		M6 x 1.0 x 45 Stud	2
18	NS	Oil Cooler (Kohler 24 594 12-S)	1	* Service Part Only  ** <b>Required hose specifications:</b> M258 - 7/64" ID automotive vacuum hose			
19	8016-8	Oil Cooler / Regulator Mount	1				
<b>Exhaust Assembly</b>				<b>NOTE:</b> Refer to Kohler Engine Decal (NS) for Engine Identification Numbers.			
20	NS	Gasket (Kohler 2404102)	2				
21	NS	Nut (Kohler M-0841080)	4				
22	6013-14	Muffler	1				
23	6013-18	Muffler Heat Shield	1				
24	6013-19	Muffler Brace	1				
25	8021	Engine Brace	1				
26	NS	Sensor, Oxygen (Kohler)	1				

# ENGINE GROUP



Beginning S/N 134494  
 Effective Date 05-20-15  
 Use only genuine **Walker**® replacement parts.

# ENGINE GROUP (FUEL COMPONENTS)

ITEM NO.	PART NO.	DESCRIPTION	NO. REQ'D	ITEM NO.	PART NO.	DESCRIPTION	NO. REQ'D
<b>Fuel Tank Assembly</b>				<b>Fasteners</b>			
1	8018-4	Fuel Module Cover	1	F002		10-24 Keps Nut	4
2	8018-1	Fuel Module Bracket	1	F004		1/4-20 Keps Nut	2
3	8018-2	Fuel Bracket Spacer	1	F009		5/16-18 Whiz Locknut	2
4	M113	Fuel Line (3/16 x 12")	1**	F025		10-24 x 3/8 PPHMS	2
5	5879-4	Hose Clamp (7/16)	1	F029		1/4-20 x 1/2 Hex Bolt	2
6	8046-16	Quick Connector 5/16 x 5/16 - 45°	1	F034		5/16-18 x 3/4 Hex Bolt	2
7	8046-14	Quick Connector, Male (5/16)	1	F050		1/4 SAE Washer	2
8	5879-3	Hose Clamp (1/2)	6	F061		1/4 Internal Star Lock Washer	2
9	5879-5	Stepless Ear Clamp (5/8)	2	F079		A/A66D Aluminum Pop Rivet	1
10	M247	Fuel Line (5/16 x 6")	1**	F128		10-24 x 3/8 PTHMS	1
11	5975-3	Cable Tie (50# x 7")	2	F129		10-24 x 1/2 PTHMS	1
12	M246	Fuel Line (1/4 x 23")	1**	F398		1/4-20 x 2 Hex Bolt	2
13	M246	Fuel Line (1/4 x 6")	1**				
14	5020-3	Fuel Filter	1				
15	7833	Cable Clamp (7/8 x 1/4)	1				
16	6055-2	Fuel Tank, 4.0 Gallon, Gas (Includes Items # 17, 18, 21, 23, 25 & 26)	1				
17	5086-7	Hose (1/4 x 6)	1				
18	5020-2	Fuel Filter, In Tank	1				
19	8023	Fuel Tank Support	1				
20	5082-4	2-1/4 Ratchet Fuel Cap	*				
21	8043-8	Roll Over Valve	1				
22	M113	Fuel Line (3/16 x 26")	1**				
23	5977-7	Roll Over Grommet (.900 x 1-1/2)	1				
24	5083-1	Bushing, Rubber	*				
25	8055-2	Fuel Tank Gauge	1				
26	5083-8	Tank Tube (13")	1				
27	M246	Fuel Line (1/4 x 20")	1**				
28	8016-6	ECU Mount	1				

\* Service Part Only

**\*\* Required hose specifications:**

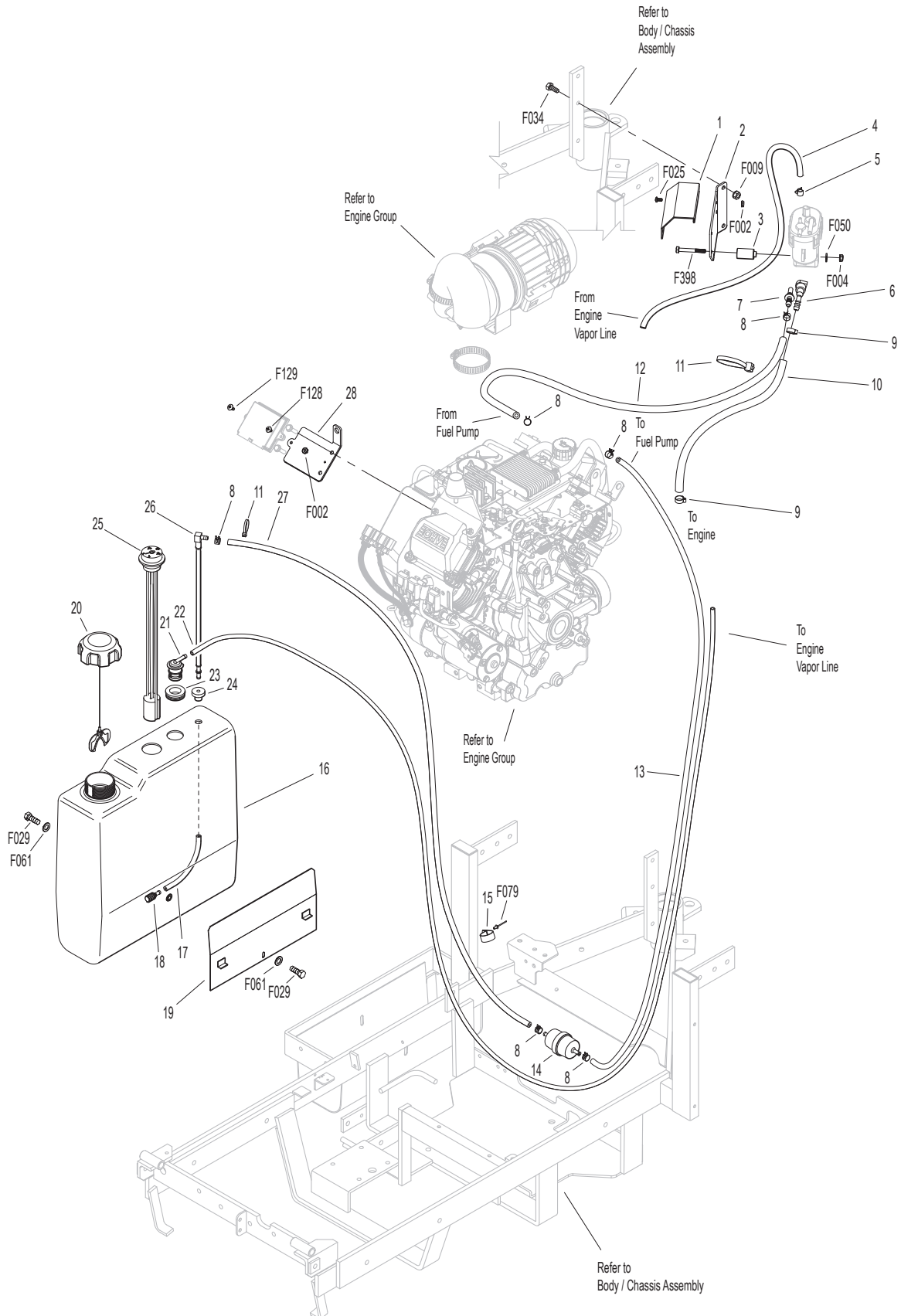
M113 - 3/16" ID fuel/oil/vapor hose (Gates 4219-0093 or equivalent)

M246 - 1/4" ID low permeation (<15g/m<sup>2</sup>/day) fuel hose (Parker 38904 or equivalent)

M247 - 5/16" ID low permeation (<15g/m<sup>2</sup>/day) fuel hose (Parker 38905 or equivalent)

**NOTE:** Refer to Kohler Engine Decal (NS) for Engine Identification Numbers.

# ENGINE GROUP (FUEL COMPONENTS)



Beginning S/N 134494  
 Effective Date 05-20-15  
 Use only genuine **Walker**® replacement parts.

# HYDROSTATIC GROUND DRIVE ASSEMBLIES

ITEM NO.	PART NO.	DESCRIPTION	NO. REQ'D	ITEM NO.	PART NO.	DESCRIPTION	NO. REQ'D
<b>Transmission Lockout Assembly</b>				<b>Transmission Repair Parts</b>			
1	5028-3	Transmission Lockout Assembly (Includes Items # 2-5, F023, F027 & F081)	*	27	5025-13	Hydro Input Shaft (Includes Items # 28-30)	*
2	5847	Plastic Tip	2	28	5025-8	Bearing, Input Shaft	*
3	5057	Lockout Cam (Includes Item # F081)	2	29	5025-7	Snap Ring	*
4	5028-5	Lockout Lever	2	30	5025-2	Seal, Input Shaft	*
5	5027-5	Lockout Mount	1**	31	5022	Reservoir to Casting Gasket	*
<b>Ground Drive Assemblies</b>				32	5024	Reservoir Cap and Gasket	*
6	6209-5	Bridge Assembly	1	33	5023	Transmission Reservoir Kit	*
7	6209-10	Idler Pulley Mount	1	34	5023-1	Rubber Bladder	*
8	6243-2	Hydro Fan, CCW	1	35	5025-6	O-Ring & Plug Assembly	*
9	5026	Hydrostatic Drive, CW (700-051)	1	36	5025-3	Seal, Control Shaft	*
10	6206-1	Air Vent Valve	*	<b>Fasteners</b>			
11	6200-9	Gear Axle Drive Assembly (Includes Items # 10 & 12)	2	F009	5/16-18 Whiz Locknut		2
12	6207-12	Pipe Plug (1/4 NPTF)	4	F012	3/8-16 Keps Nut		1
13	5126	Cable Retainer (Uses existing bolt on Gear Axle Drive Assembly)	1	F023	10-24 ESNA Nut		2
14	6233-1	Pinion Gear	2	F027	10-24 x 5/8 PPHMS		2
15	6234	Spacer, Pinion Gear	2	F034	5/16-18 x 3/4 Hex Bolt		2
16	6201	O-Ring Seal	2	F036	1/4-20 x 1/2 SBH Screw		2
17	7244	Hydro Pulley (3-7/8/MV) (Includes Items # F064 & F359)	2	F038	3/8-16 x 1 Hex Bolt		4
18	6243-1	Hydro Fan, CW	1	F040	3/8-16 x 1-1/2 Hex Bolt		4
19	5025	Hydrostatic Drive, CCW (700-052)	1	F043	3/8-16 x 3 Hex Bolt		6
<b>Deck Support Arm Assemblies</b>				F051	3/8 SAE Washer		2
20	6430-10	Outboard Mount, LH	1	F053	7/16 Internal Star Lock Washer		4
21	6431-1	Deck Support Arm, LH (Includes Item # 25)	1	F063	3/8 Internal Star Lock Washer		16
22	5775-2	Hitch Pin (# 6)	2	F064	1/8 x 1/2 Woodruff Key (#3)		4
23	6431-2	Deck Support Arm, RH (Includes Item # 25)	1	F081	A/A45D Aluminum Pop Rivet		2
24	6430-9	Outboard Mount, RH	1	F160	External Snap Ring (.669 Shaft)		2
25	5830	Grease Fitting	2	F178	1/4 x 1 Fender Washer		2
26	6840-1	Support Arm Bushing (2-1/16)	2	F194	7/16 x 1-1/4 x 1/8 Washer		2
				F200	7/16-20 x 3 Grade 8 Bolt		2
				F244	7/16-20 x 3/4 Hex Bolt		2
				F262	3/8-16 x 4 Hex Bolt All Thread		2
				F359	5/16-18 x 5/16 Set Screw (Unbrako Knurl Point)		4
				* Service Part Only			
				** Part not used on Jackshaft side of tractor.			

Beginning S/N 134494

Effective Date 05-20-15

Use only genuine **Walker**® replacement parts.





# STEERING CONTROL ASSEMBLIES

ITEM NO.	PART NO.	DESCRIPTION	NO. REQ'D	ITEM NO.	PART NO.	DESCRIPTION	NO. REQ'D
<b>Transmission Spring Assemblies</b>				<b>Steering Lever Assemblies</b>			
1	6201-2	Shock Mount Gear Drive, RH	1	31	5850-2	Handle Grip, Foam (5-1/2)	2
2	5146	10mm Ball Stud	4	32	5223	Extension Spring (1/4 x 5-1/2)	2
3	5199-3	Steering Lever Dampener Assembly	2	33	5450	D-Clip	2
4	6201-1	Shock Mount Gear Drive, LH	1	34	5451-10	Steering Lever Assembly, LH / Adjustable (Includes Items # 9, 10, 20, F029 & F489)	1
5	5214-2	Ball Joint (5/16-24) Nylon Lined	2		5451-7	Steering Lever Arm, LH / Adjustable	*
6	6212-1	Transmission Control Arm, LH	1	35	5391-3	Steering Lever Support	1
7	5213-3	Control Rod (6")	1	36	5217	Pivot Pin, Steering Lever	1
8	5665-1	Compression Spring (2-1/2)	2	37	5453-10	Steering Lever Handle, Adjustable (Includes Items # 31 & F345)	2
9	5463-2	Steering Lever Actuator	2	38	5450-10	Steering Lever Assembly, RH / Adjustable (Includes Items # 9, 10, 20, F029 & F489)	1
10	7201-2	Fiberglide Bearing 1/2"	2		5450-7	Steering Lever Arm, RH / Adjustable	*
11	5213-4	Control Rod (14-3/4")	1				
12	5212	Transmission Control Arm, RH	1				
<b>Forward Speed Control Assemblies</b>				<b>Fasteners</b>			
13	5862	FSC Knob	1		F004	1/4-20 Keps Nut	4
14	7170-1	FSC Lever Assembly (Includes Item # 20)	1		F007	5/16-18 Jam Nut	1
15	5975-3	Cable Tie (50# x 7")	1		F008	5/16-24 Keps Nut	2
16	5214-4	Ball Joint (5/16-24) W/O Stud	2		F009	5/16-18 Whiz Locknut	7
17	5219	Extension Spring (3/4 x 6-3/4)	1		F010	5/16-24 ESNA Nut	2
18	5172	Bearing, Delrin (.255 x .379 x .250)	2		F012	3/8-16 Keps Nut	2
19	5141-1	FSC Actuator Block	1		F024	5/16-24 Jam Nut	4
20	5830	Grease Fitting	6		F029	1/4-20 x 1/2 Hex Bolt	4
21	5140-9	FSC Brace	1		F032	1/4-20 x 3/4 Hex Bolt	2
22	5141	FSC Friction Washer (1-1/2 x 3/8 x 1/16)	2		F034	5/16-18 x 3/4 Hex Bolt	2
23	5142-8	FSC Key	1		F038	3/8-16 x 1 Hex Bolt	2
	5140-12	FSC Control Assembly (Includes Items # 20, 22-24, 27, F182, F192 & F193)	*		F050	1/4 SAE Washer	1
24	5140-30	FSC Friction Body (Includes Item # 20)	1		F051	3/8 SAE Washer	2
25	5141-2	FSC Actuator Rod	1		F064	1/8 x 1/2 Woodruff Key (#3)	2
26	5281-5	Clevis Pin (1/4 x 0.80)	1		F068	1/8 x 1 Cotter Pin	1
27	5142-9	FSC Actuator Cam	1		F069	3/32 x 1/2 Cotter Pin	1
28	5141-3	Spacer	1		F093	5/16-18 x 1 Hex Bolt	1
29	5141-4	FSC Rod	1		F146	1/4-20 Jam Nut	1
30	5470-2	Speed Control Stop	1		F182	1/4 x 5/8 x 1/8 Washer	1
					F183	.312 x .700 x .074 Washer	3
					F186	5/64 x 1/2 Cotter Pin	1
					F188	1/4-20 Self-Locking Nut	4
					F192	3/8-24 Self-Locking Nut	1
					F193	3/8 Belleville Spring Washer	3
					F198	.250 x .625 x .040 Washer, SS	2
					F226	5/16-18 x 7/8 Hex Bolt	1
					F316	5/16-18 x 1-3/4 Hex Bolt	1
					F345	1/4-20 x .770 Knurled Bolt	4
					F350	1/4-20 LP Nylock	1
					F353	3/8-16 ESNA LP Nut	2
					F401	.504 x .751 x .030 Washer	1
					F489	Washer 1/4 x 7/8 x .090	2

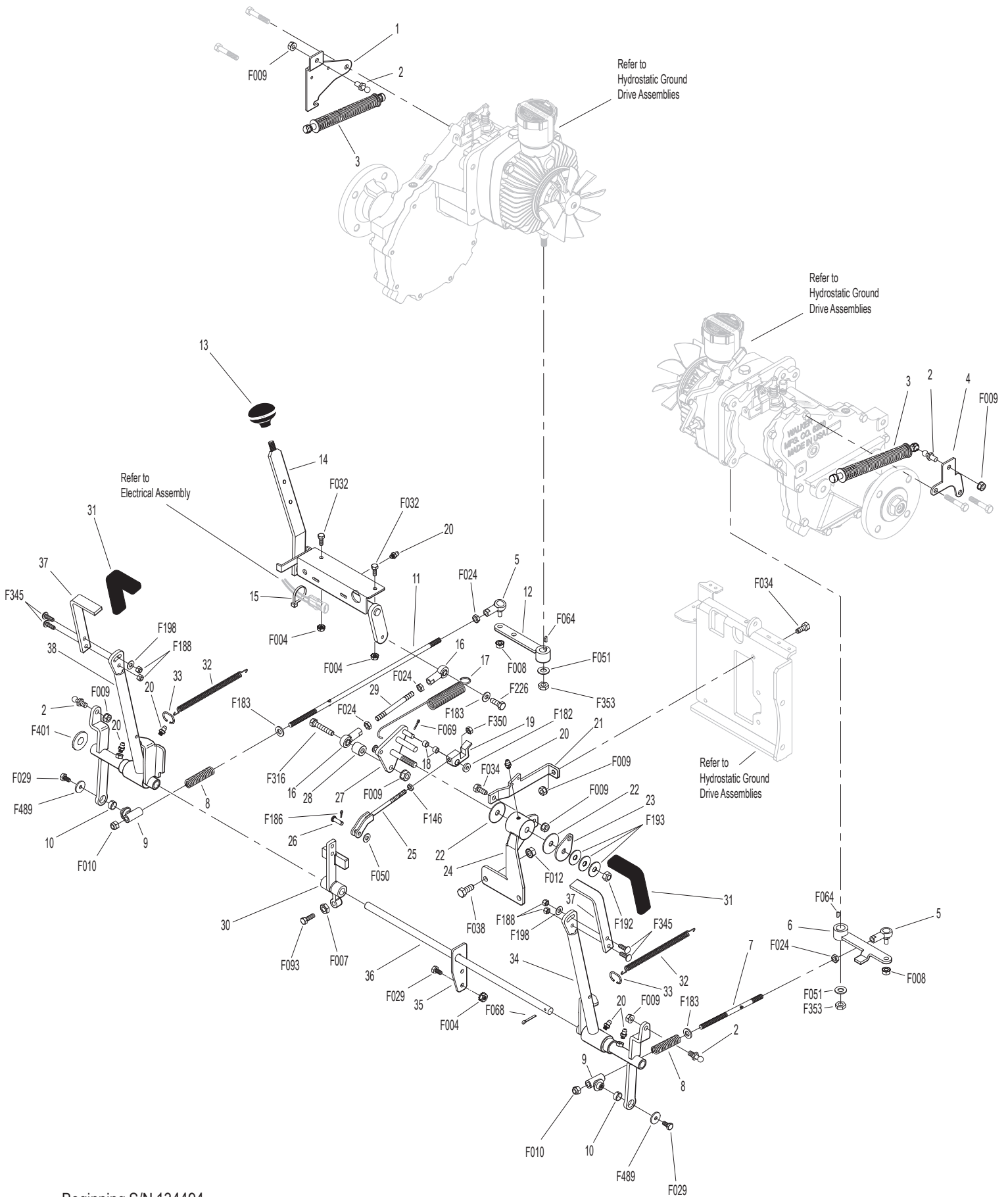
\* Service Part Only

Beginning S/N 134494

Effective Date 05-20-15

Use only genuine **Walker**® replacement parts.

# STEERING CONTROL ASSEMBLIES

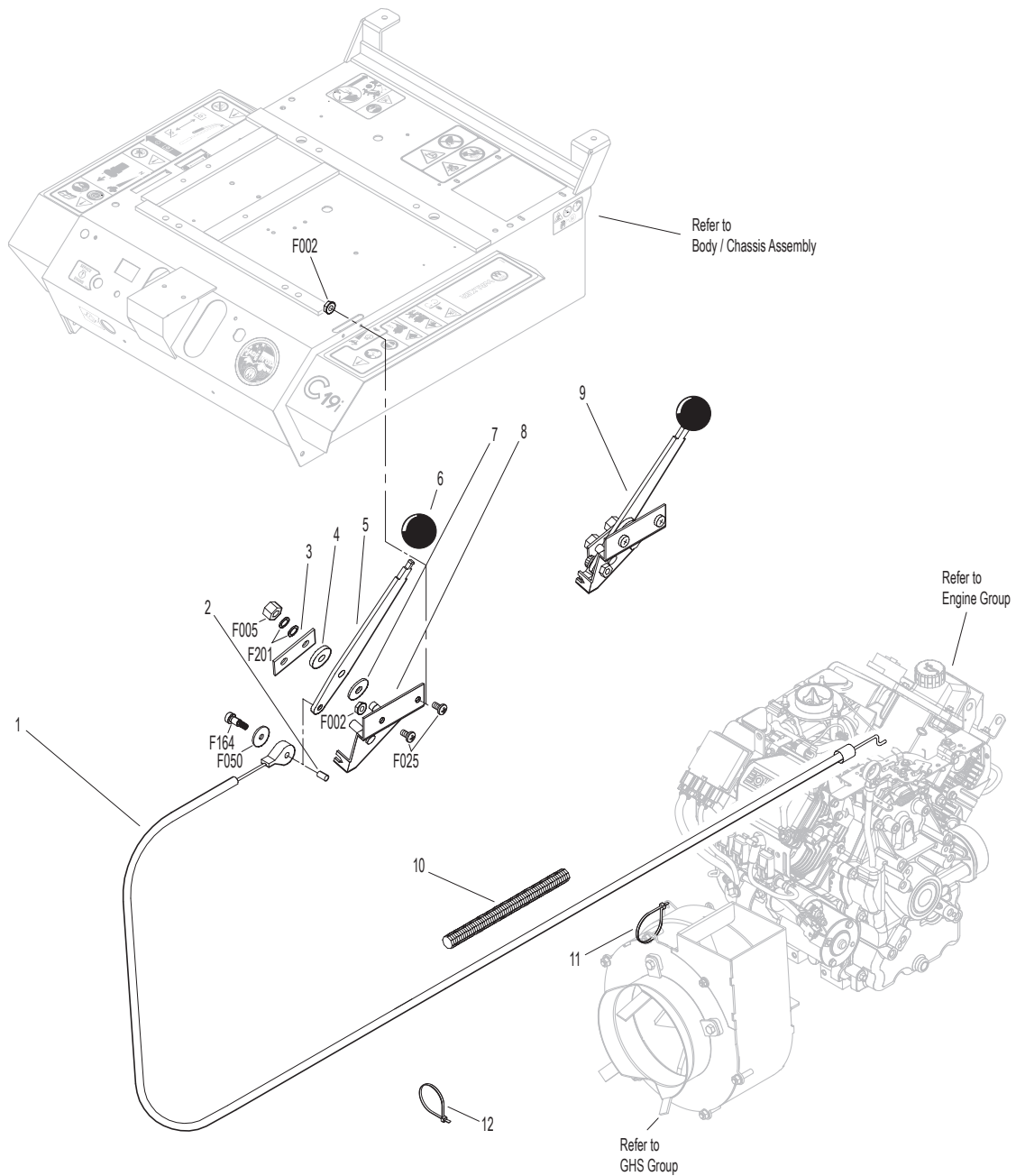


Beginning S/N 134494  
 Effective Date 05-20-15  
 Use only genuine Walker® replacement parts.

# THROTTLE CONTROL ASSEMBLY

ITEM NO.	PART NO.	DESCRIPTION	NO. REQ'D	ITEM NO.	PART NO.	DESCRIPTION	NO. REQ'D
<b>Throttle Control Assembly</b>				<b>Fasteners</b>			
1	8121-1	Throttle Cable	1		F002	10-24 Keps Nut	2
2	5172	Bearing, Delrin (.255 x .379 x .250)	1		F005	1/4-20 ESNA Nut	1
3	5108-7	Control Lock Tab	1		F025	10-24 x 3/8 PPHMS	2
4	5108-10	Friction Washer (.125)	1		F050	1/4 SAE Washer	1
5	5108-1	Control Lever, Throttle & Choke	1		F164	10-24 x 1/4 x 3/8 SHL Bolt	1
6	5108-5	Throttle Control Knob, Red	1		F201	1/4 Belleville Spring Washer	2
7	5108-11	Friction Washer (.062)	1				
8	5108-8	Control Bracket	1	*		Service Part Only	
9	7108	Control Assembly (Includes Items # 3-5, 7, 8 & F201)	1				
	8121	Throttle Control and Cable Assembly (Includes Item # 6)	*				
10	8123	Insulation Sleeve (3/8 x 6)	1				
11	5975-3	Cable Tie (50# x 7")	1				
12	5975-1	Cable Tie (18# x 3-3/4")	1				

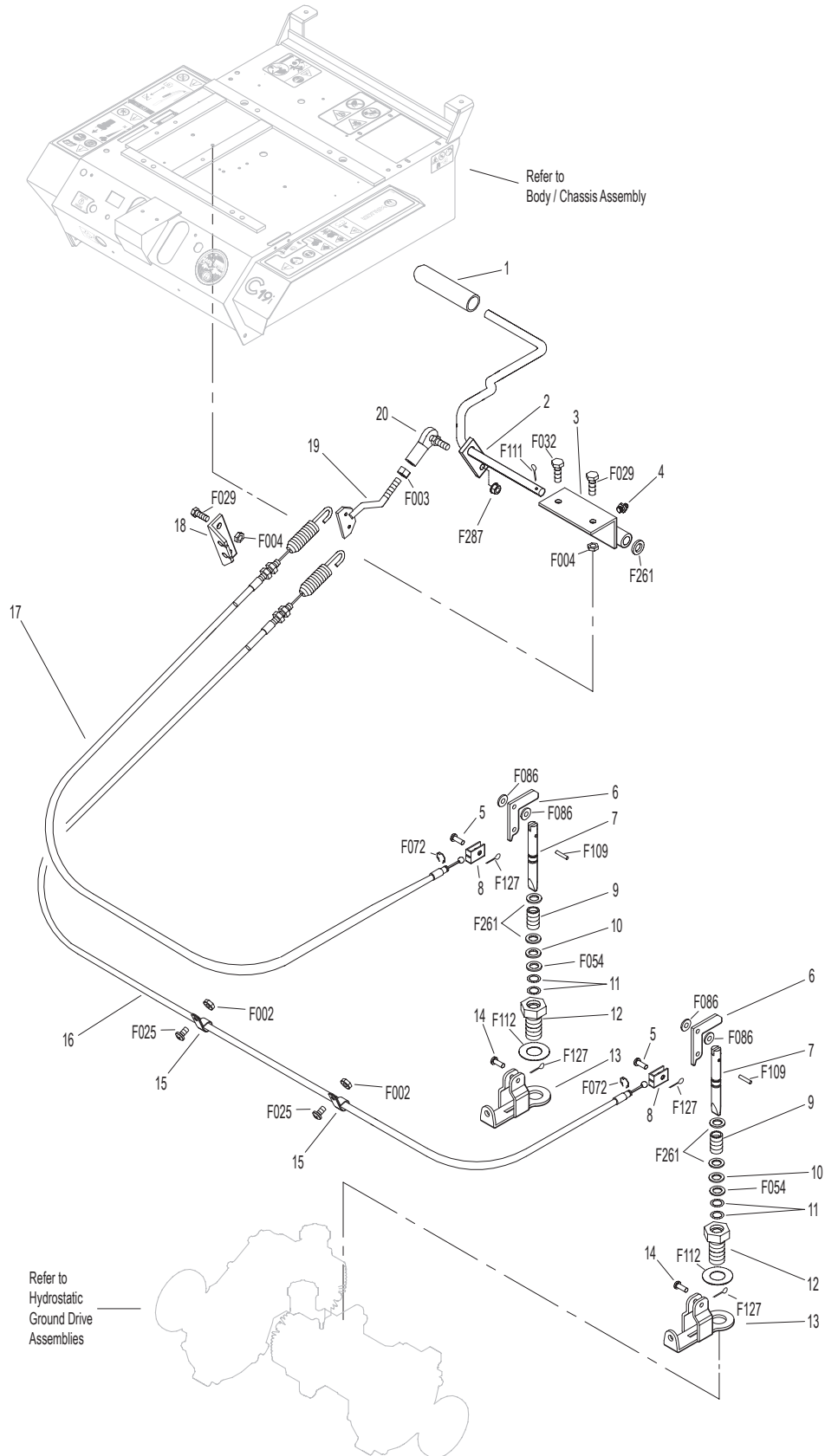
# THROTTLE CONTROL ASSEMBLY



# PARKING BRAKE ASSEMBLY

ITEM NO.	PART NO.	DESCRIPTION	NO. REQ'D	ITEM NO.	PART NO.	DESCRIPTION	NO. REQ'D
<b>Parking Brake Assembly</b>				<b>Fasteners</b>			
1	7406-1	Handle Grip, Red	1	F002		10-24 Keps Nut	2
2	7406-8	Parking Brake Lever (4-1/4)	1	F003		1/4-28 Hex Nut	1
3	7406-2	Lever Mount	1	F004		1/4-20 Keps Nut	4
4	5830	Grease Fitting	1	F025		10-24 x 3/8 PPHMS	2
5	7407	Clevis Pin (3/16 x 1/2)	2	F029		1/4-20 x 1/2 Hex Bolt	3
6	7404-6	Brake Actuator Arm	2	F032		1/4-20 x 3/4 Hex Bolt	1
7	7405	Pin, Transmission Lock	2	F054		AN960616 Washer	2
8	7402	Clevis	2	F072		1/4 "E" Retainer Ring	2
9	7408	Compression Spring (1/2 x 3/4)	2	F086		#10 SAE Washer	4
10	7415	Rubber Dust Shield (5/8 x 3/8 x 1/32)	2	F109		1/8 x 5/8 Roll Pin	2
11	5567-3	O-Ring Seal (1/4 x 3/8)	4	F111		1/8 x 3/4 Cotter Pin	1
12	7403	Plunger Bushing, Gear Axle	2	F112		5/8 x 1-1/4 x .03 Washer	2
13	7404-7	Brake Actuator Mount	2	F127		1/16 x 1/2 Cotter Pin	4
14	7412	Clevis Pin (3/16 x 5/8)	2	F261		AN960616L Washer	5
15	5833	Cable Clamp (1/4)	2	F287		1/4-28 Keps Nut	1
16	7410	Brake Control Cable, LH (25.5")	1				
17	7409	Brake Control Cable, RH (20.5")	1				
18	7401-3	Cable Mount Bracket	1				
19	7401-1	Cable Pull Rod	1				
20	5552	Ball Joint (1/4-28)	1				

# PARKING BRAKE ASSEMBLY



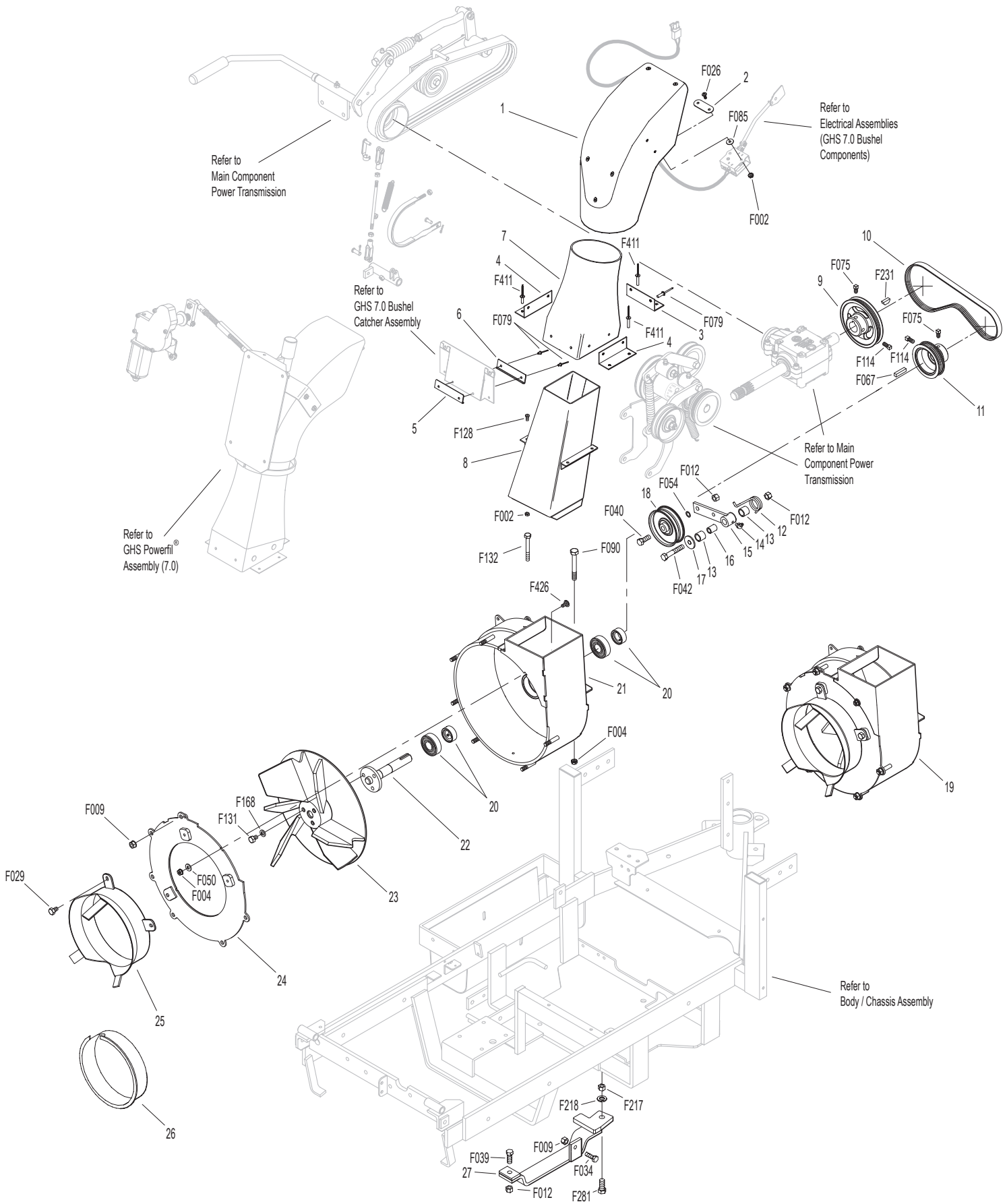
Beginning S/N 134494  
 Effective Date 05-20-15  
 Use only genuine **Walker**® replacement parts.

# GHS GROUP

ITEM NO.	PART NO.	DESCRIPTION	NO. REQ'D	ITEM NO.	PART NO.	DESCRIPTION	NO. REQ'D
<b>Delivery Chute Assembly</b>				<b>Fasteners</b>			
1	5515-2	Elbow Delivery Spout	1	F002		10-24 Keps Nut	6
2	5592-13	Backing Plate, Grass-Pak® Switch	1	F004		1/4-20 Keps Nut	3
3	5578	Rear Clip, Chute Mount	1	F009		5/16-18 Whiz Locknut	7
4	5577	Side Clip, Chute Mount	2	F012		3/8-16 Keps Nut	3
5	7511-5	Outside Chute Cover Lip	1	F026		10-24 x 1/2 PPHMS	2
6	7511-4	Inside Chute Cover Lip	1	F029		1/4-20 x 1/2 Hex Bolt	3
7	5511-3	Delivery Chute, with Clips, 7.0 Gray (Includes Items # 3, 4, F079 & F411)	1	F034		5/16-18 x 3/4 Hex Bolt	1
8	7530-4	Body Chute (10.5 Blower)	1	F039		3/8-16 x 1-1/4 Hex Bolt	1
				F040		3/8-16 x 1-1/2 Hex Bolt	1
				F042		3/8-16 x 2-1/4 Hex Bolt	1
				F050		1/4 SAE Washer	1
				F054		AN960616 Washer	1
				F067		3/16 x 3/16 x 1 Key	1
				F075		5/16-18 x 1/2 SQH Set Screw	2
				F079		A/A66D Aluminum Pop Rivet	8
				F085		3/16 Rivet Backup Washer	2
				F090		1/4-20 x 2-1/2 Hex Bolt	1
				F114		5/16-18 x 5/8 SQH Set Screw	2
				F128		10-24 x 3/8 PTHMS	4
				F131		5/16-18 x 1/2 Hex Bolt	3
				F132		1/4-20 x 2-3/4 Hex Bolt	1
				F168		5/16 Split Lock Washer	3
				F217		7/16-14 Hex Nut	1
				F218		7/16 Split Lock Washer	1
				F231		1/4 x 3/4 Woodruff Key (# 806)	1
				F281		7/16-14 x 1-3/4 Hex Bolt	1
				F411		3/16 Bulbex Rivet	6
				F426		1/4-20 x 1/2 Carriage Bolt	1
<b>Blower Belt Tightener Assembly</b>				* Service Part Only			
9	7238-6	Blower Drive Pulley (Includes Items # F075, F114 & F231)	1	** Plugs Blower when GHS is not in use. Furnished only with Mulching Decks, SD Decks used on a GHS Tractor, Rotary Broom Attachment and Snowblower Attachment. Use of this part may be replaced by installing Blower Lockout Kit (P/N 7541).			
10	7234-2	Blower Belt (Micro-V)	1				
11	7239-1	Blower Pulley (Mirco-V) (Includes Items # F067, F075 & F114)	1				
12	7364-2	Torsion Spring	1				
13	7201-3	Fiberglide Bearing	2				
14	5830-3	Grease Fitting (45 Degree)	1				
15	7364-1	Blower Belt Tightener Arm	1				
16	7201-4	Inner Race (1-1/2)	1				
17	5841-1	Retainer Washer	1				
18	5245	Idler Pulley (3")	1				
<b>Blower Assembly</b>							
19	7544	Blower Assembly (10.5") (Includes Items # 20-25, F004, F009, F029, F050, F131, F168 & F426)	*				
20	5268	Bearing W/Collar (3/4)	2				
21	7543-3	Blower Housing (10.5")	1				
22	7545-2	Blower Output Shaft (10.5")	1				
23	7545	Blower Wheel (10.5")	1				
24	7543-1	Blower Faceplate (10.5")	1				
25	7526	Intake Tube (10.5" Blower)	1				
26	5595-2	Intake Cover, GHS	**				
27	7528-4	Skid Bar (10.5" Blower)	1				



# GHS GROUP

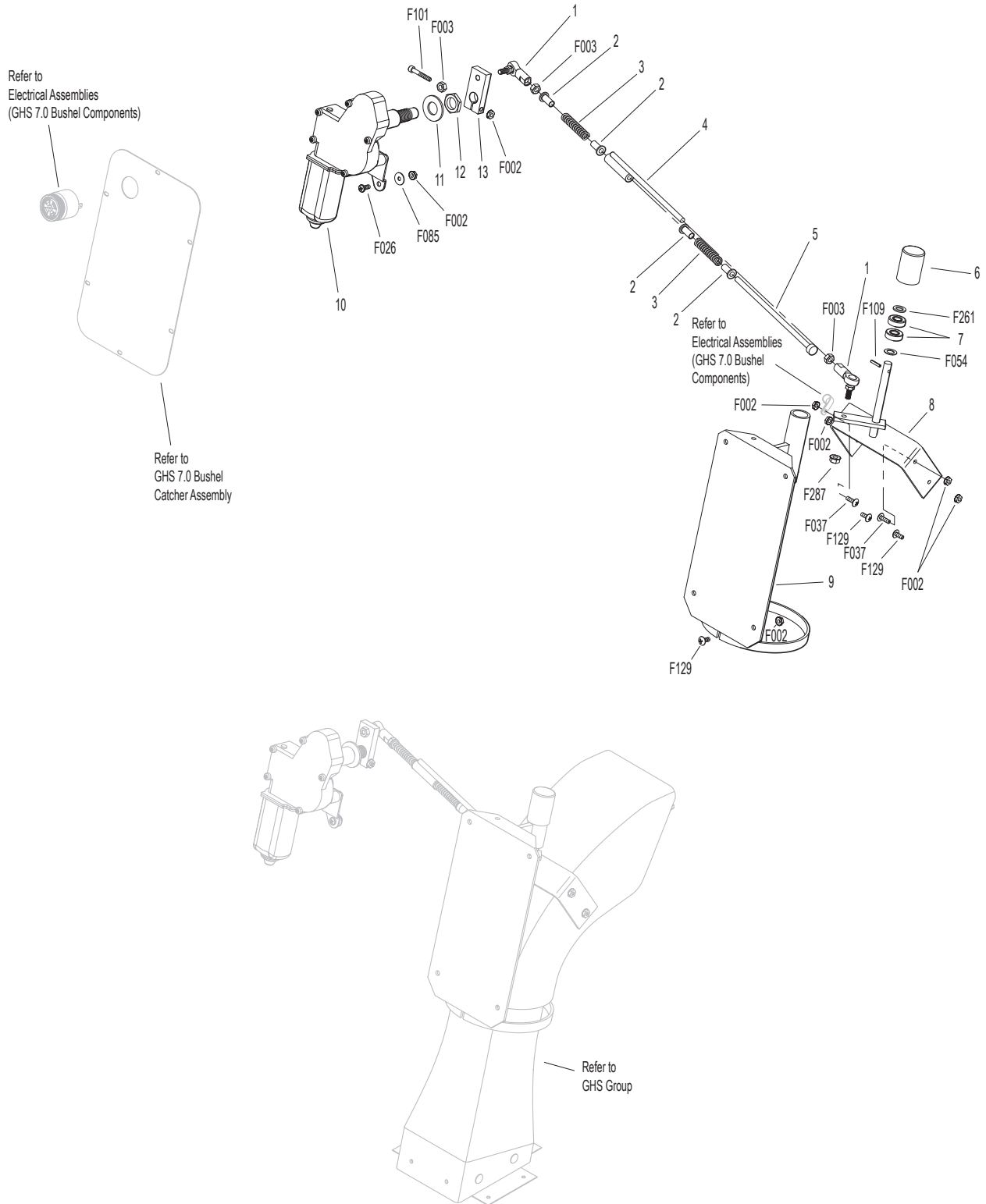


Beginning S/N 134494  
 Effective Date 05-20-15  
 Use only genuine **Walker®** replacement parts.

# GHS POWERFIL® ASSEMBLY (7.0)

ITEM NO.	PART NO.	DESCRIPTION	NO. REQ'D	ITEM NO.	PART NO.	DESCRIPTION	NO. REQ'D
<b>7.0 GHS Powerfil® Assembly</b>				<b>Fasteners</b>			
1	5552	Ball Joint (1/4-28)	2	F002		10-24 Keps Nut	10
2	5553-3	Bushing, Powerfil® Actuator	4	F003		1/4-28 Hex Nut	3
3	5553-1	Compression Spring (1/2 x 2)	2	F026		10-24 x 1/2 PPHMS	1
4	5558-2	Powerfil® Actuator Rod	1	F037		10-24 x 5/8 PTH Screw	2
	5549	Actuator Rod Assembly (Includes Items # 1-5 & F003)	*	F054		AN960616 Washer	1
				F085		3/16 Rivet Backup Washer	1
5	5558-1	Powerfil® Push Rod	1	F101		10-24 x 1-1/4 SHC Screw	1
6	5551-3	Bearing Cap, Powerfil®	1	F109		1/8 x 5/8 Roll Pin	1
7	5551-1	Pivot Bearing (#S3PP)	2	F129		10-24 x 1/2 PTHMS	6
8	5518-2	Pivot, Delivery Spout	1	F261		AN960616L Washer	1
9	5517-2	Pivot Mount	1	F287		1/4-28 Keps Nut	1
10	5519-5	Actuator Motor (12V) (Includes Items # 11 & 12)	1	* Service Part Only			
11	5519-2	Motor Mount Washer	*				
12	5519-3	Motor Mount Nut (5/8-24)	*				
13	5554	Actuator Arm	1				

# GHS POWERFIL® ASSEMBLY (7.0)



Beginning S/N 134494  
 Effective Date 05-20-15  
 Use only genuine **Walker®** replacement parts.

# GHS 7.0 BUSHEL CATCHER ASSEMBLY

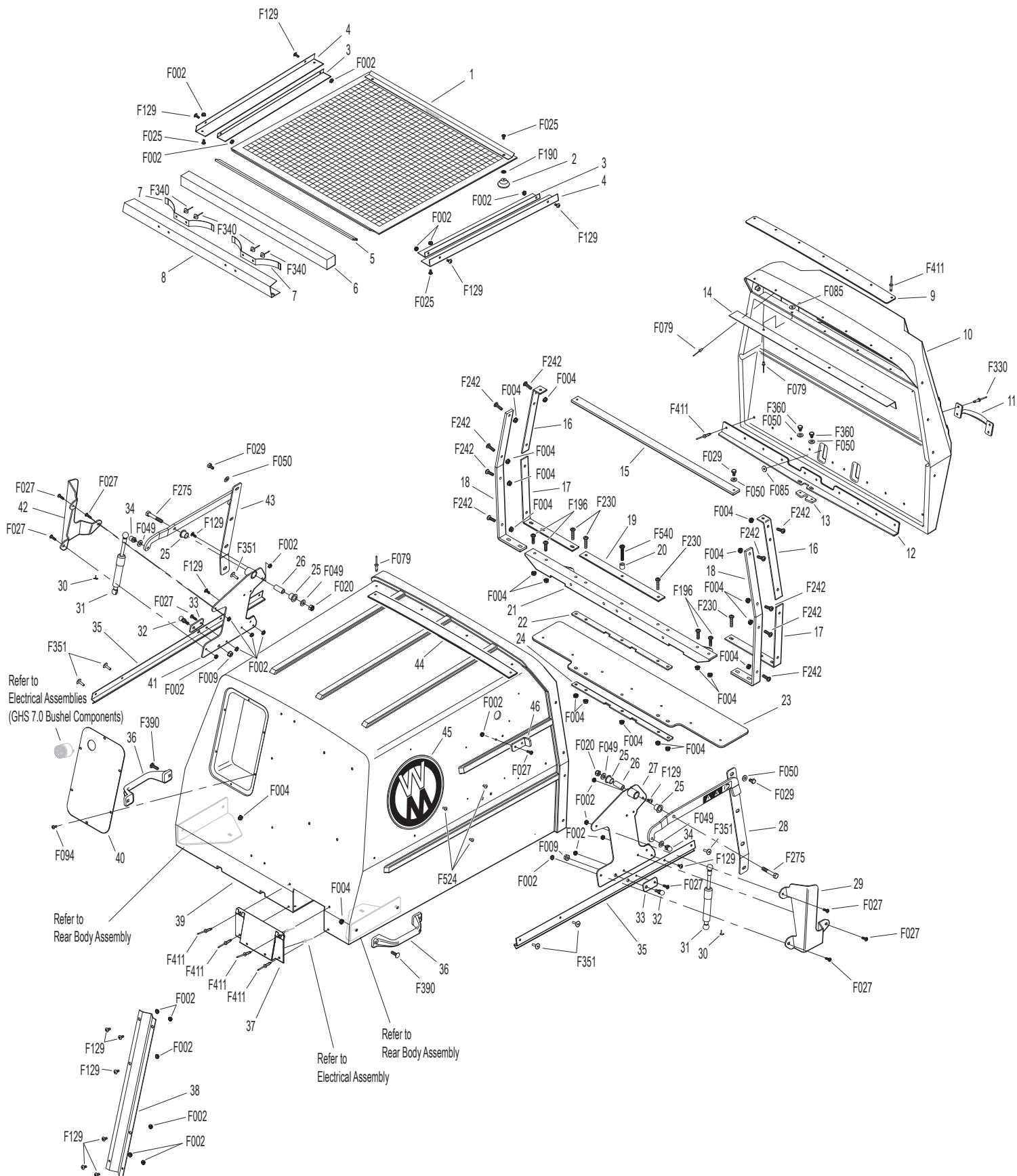
ITEM NO.	PART NO.	DESCRIPTION	NO. REQ'D	ITEM NO.	PART NO.	DESCRIPTION	NO. REQ'D
<b>Upper Baffle Screen Assembly (Removable)</b>				39	7510-2	7.0 Bushel Catcher Box	1
					7502-5	7.0 Catcher W/Powerfil® (Includes Door)	*
1	7512-6	Removable Screen (3/16 Hole) (Includes Items # 2, F025 & F190)	1**	40	7607-8	Powerfil® Cover Plate	1
2	7506	Knob / Threaded Insert (10-24)	2	41	7608-4	Hinge Plate, RH	1
3	7509-2	Channel Top	2	42	8155-8	7.0 Gas Spring Cover, RH	1
4	8606-2	Channel Bottom	2	43	7607-14	Catcher Door Arm, RH	1
5	6856-1	Edge Molding (21-3/4")	1	44	7584-3	Reinforcing Strap	1
6	6507	Screen Seal (23-1/4")	1	45	5801-3	Decal Plate, Round (Set of 2)	1
7	7505	Mustache Spring	2	46	7608-5	Door Arm Stop	2
8	7509-6	C-Channel With Spring (Includes Items # 7 & F340)	1	<b>5598-2 Optional Dump Bag (Not Shown)</b> May be ordered as an option. Contact your Walker dealer.			
<b>7.0 Exhaust Deflector Door Assembly</b>				<b>Fasteners</b>			
9	7607-3	Upper Door Seal	1	F002	10-24 Keps Nut		27
10	7510-4	7.0 Catcher Box Door (Includes Frame) (Includes Items # 9, 11, 12, 14, F079, F085, F330 & F411)	1	F004	1/4-20 Keps Nut		23
11	5583	Handle	1	F009	5/16-18 Whiz Locknut		2
12	7607-6	Lower Door Stiffener (7.0)	1	F020	5/16-18 ESNA Nut		2
13	8607-8	Door Guide	1	F025	10-24 x 3/8 PPHMS		6
14	7607-5	Upper Door Stiffener	1	F027	10-24 x 5/8 PPHMS		12
<b>GHS 7.0 Bushel Catcher Assembly</b>				F029	1/4-20 x 1/2 Hex Bolt		4
15	7503-7	Center Strap (7.0)	1	F049	5/16 SAE Washer		4
16	7503-6	Upper Frame Doubler (7.0)	2	F050	1/4 SAE Washer		6
17	7503-5	Lower Frame Doubler (7.0)	2	F079	A/A66D Aluminum Pop Rivet		14
18	7503-4	Outside Box Strap (7.0)	2	F085	3/16 Rivet Backup Washer		21
19	8608-11	Catcher Door Finger	1	F094	8-32 x 1/2 PTHMS		6
20	8608-4	Center Frame Doubler	1	F129	10-24 x 1/2 PTHMS		14
21	7503-11	Catcher Mount	1	F190	#10 Internal Star Lock Washer		2
22	7610-4	Catcher Dump Flap Spacer (7.0)	1	F196	1/4-20 x 1 PPHMS, SS		4
23	7610-8	Catcher Dump Flap With Plate	1	F230	1/4-20 x 1-1/4 PPHMS, SS		4
24	8610-3	Backing Plate / Dump Flap	1	F242	1/4-20 x 7/8 PPHMS, SS		10
25	7620-3	Pivot Bushing (1/2 x 9/16)	4	F275	5/16-18 x 2 Hex Bolt		2
26	7607-7	Bushing	2	F330	3/16D x 21/32L Rivet, SS		4
27	7608-3	Hinge Plate, LH	1	F340	Rivet, Aluminum		4
28	7607-15	Catcher Door Arm, LH	1	F351	Aluminum Pop Rivet		6
29	8155-7	7.0 Gas Spring Cover, LH	1	F360	1/4-20 x 3/8 Hex Bolt		2
30	5147	Spring Clip	4	F390	1/4-20 x 7/8 Carriage Bolt		4
31	5155-5	Gas Spring	2	F411	3/16 Bulbex Rivet		21
32	5155-13	3/4 Ball Stud	2	F524	3/16 x 3/8 Aluminum Rivet, Black		6
33	5523-6	Gas Spring Plate	2	F540	1/4-20 x 1-3/4 PPHMS, SS		1
34	5155-12	5/16 Ball Stud	2	* Service Part Only			
35	5155-15	Box Support, Gas Spring	2	** This screen can be replaced by P/N 7512-7 Removable Screen (3/4" holes) for improved air flow performance in wet condi- tions.			
36	7532-1	Handle, Catcher Lift	2				
37	7511-6	Chute Cover	1				
38	7557-1	7.0. Wire Harness Channel	1				

Beginning S/N 134494

Effective Date 05-20-15

Use only genuine **Walker®** replacement parts.

# GHS 7.0 BUSHEL CATCHER ASSEMBLY



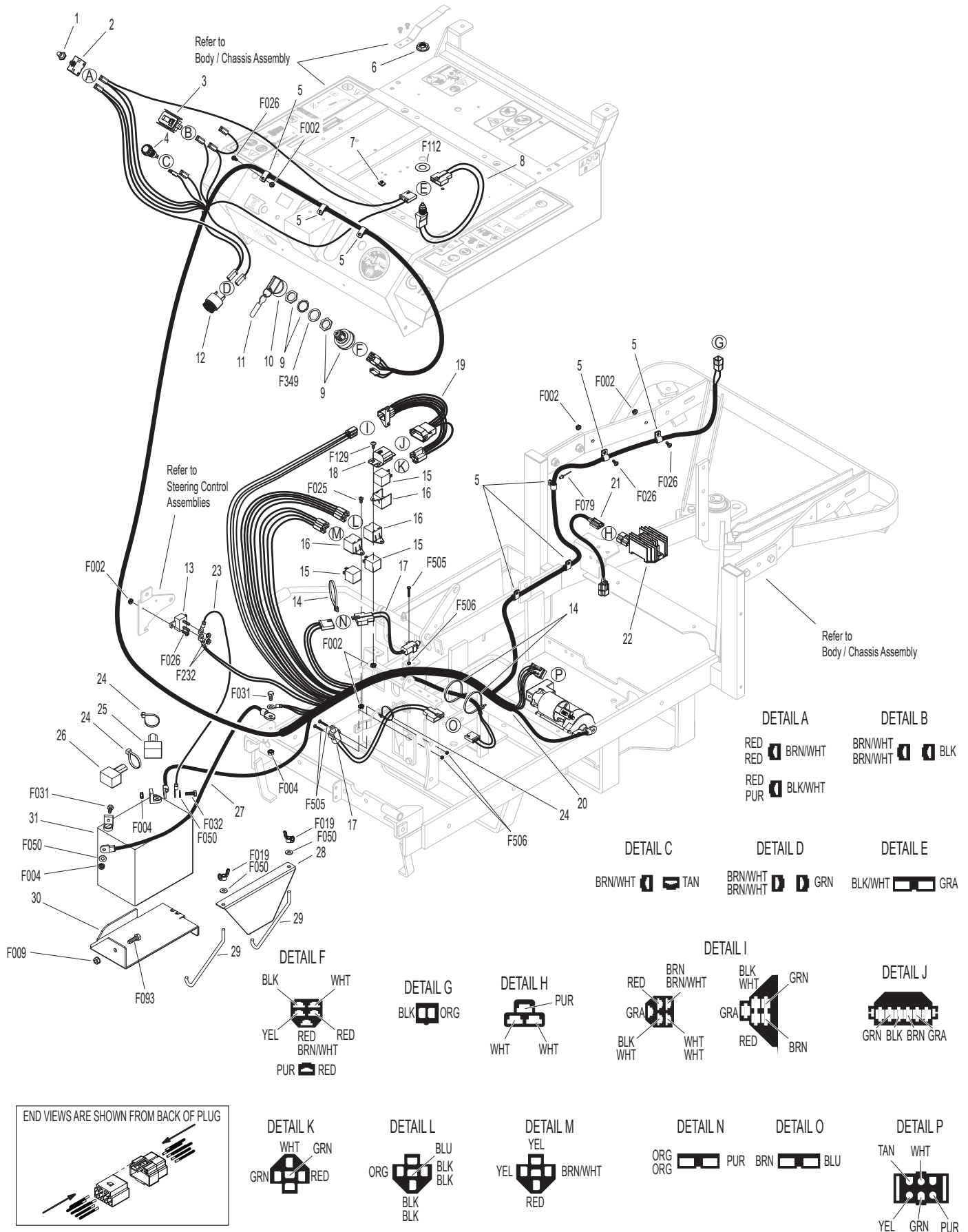
Beginning S/N 134494  
Effective Date 05-20-15  
Use only genuine **Walker**® replacement parts.

# ELECTRICAL ASSEMBLY

ITEM NO.	PART NO.	DESCRIPTION	NO. REQ'D	ITEM NO.	PART NO.	DESCRIPTION	NO. REQ'D
<b>Harness Assembly</b>				<b>Fasteners</b>			
1	7941-3	Boot, Circuit Breaker	1	F002		10-24 Keps Nut	10
2	7941-5	Circuit Breaker (7 Amp)	1	F004		1/4-20 Keps Nut	3
3	8990-1	Hourmeter (Global)	1	F009		5/16-18 Whiz Locknut	1
4	8996-9	Red Indicator Light Assembly	1	F019		1/4-20 ESNA Wing Nut	2
5	5832	Cable Clamp (1/2)	8	F025		10-24 x 3/8 PPHMS	2
6	5942-11	Delta Hex Nut	1	F026		10-24 x 1/2 PPHMS	7
7	7834-2	Wire Saddle (2 Wires)	1	F031		1/4-20 x 5/8 Hex Bolt	2
8	5942-9	Safety Switch (NO), Delta Threaded	1	F032		1/4-20 x 3/4 Hex Bolt	1
9	8960-15	Ignition Switch (with Keys) (Includes Items # 10, 11 & F349)	1	F050		1/4 SAE Washer	4
10	8960-3	Key Set W/Umbrella	1	F079		A/A66D Aluminum Pop Rivet	1
11	7854	Plastic Tip, Red	1	F093		5/16-18 x 1 Hex Bolt	1
12	8536-2	Warning Horn Assembly	1	F112		5/8 x 1-1/4 x .03 Washer	1
13	8941	Circuit Breaker (30 Amp) Auto Reset / Sealed	1	F129		10-24 x 1/2 PTHMS	1
14	5975-3	Cable Tie (50# x 7")	3	F232		10-32 Keps Nut	2
15	6941-6	Relay Switch (20/40 Amp)	*	F349		Washer .835 ID 1.122 OD, SS	1
16	6941-7	Relay Mount	*	F505		6-32 x 7/8 Hex Trim MS, SS	4
17	5942-8	Safety Switch (NO), Delta Side Mount	2	F506		6-32 Nylock Nut	2
18	7948-6	Time Delay Module (.5 Second Delay)	1				
19	7948-3	Time Delay Harness	1				
20	6940-7	Wire Harness	1				
21	8012-6	Regulator Adapter Harness	1				
22	NS	Rectifier	*				
<b>Battery Assembly</b>				* Service Part Only			
23	8943	Battery Lead Wire (+)	1				
24	5975-1	Cable Tie (18# x 3-3/4")	3				
25	5933	Battery Terminal Insul., Red (+)	1				
26	5932	Battery Terminal Insul., Black (-)	1				
27	6923	Battery Cable (-)	1				
28	5844-3	Battery Hold-Down Bar	1				
29	5839	Hook Bolt	2				
30	6390-2	Battery Pan	1				
31	NS	Battery (12V/340CCA/Dry)	1				

**NOTE:** Refer to **ELECTRICAL CONNECTORS**, Page 32 for identification of all Electrical Wiring Service Parts.

# ELECTRICAL ASSEMBLY



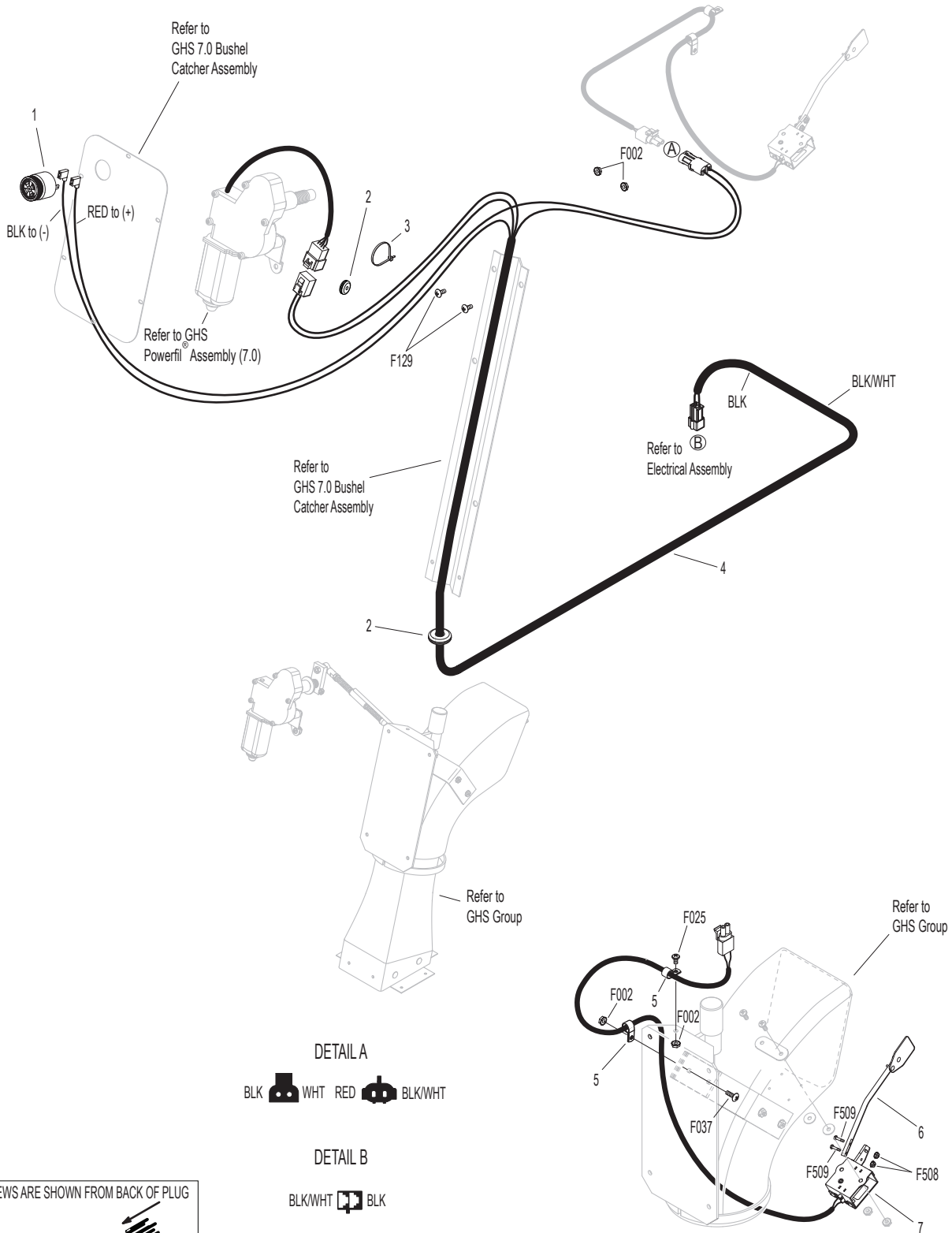
Beginning S/N 134494  
 Effective Date 05-20-15  
 Use only genuine Walker® replacement parts.

# ELECTRICAL ASSEMBLIES (GHS 7.0 BUSHEL COMPONENTS)

ITEM NO.	PART NO.	DESCRIPTION	NO. REQ'D	ITEM NO.	PART NO.	DESCRIPTION	NO. REQ'D
<b>Horn &amp; Harness Channel Assemblies</b>				<b>Fasteners</b>			
1	5536-2	Horn, Full Signal	*	F002		10-24 Keps Nut	4
2	5976-2	Grommet (3/16 x 3/4)	2	F025		10-24 x 3/8 PPHMS	1
3	5975-1	Cable Tie (18# x 3-3/4")	1	F037		10-24 x 5/8 PTH Screw	1
<b>Harness &amp; Grass-Pak® Switch Assemblies</b>				F129		10-24 x 1/2 PTHMS	2
4	8950-4	Powerfil Wire Harness (7.0/10.0)	1	F508		4-40 Keps Nut, SS	2
5	5833	Cable Clamp (1/4)	2	F509		4-40 x 1/2 Hex Head, SS	2
6	5594-6	Aluminum Shaft & Vane Assembly	1	* Service Part Only			
7	5592-21	Grass-Pak® Switch Assembly	1	<b>NOTE:</b> Refer to <b>ELECTRICAL CONNECTORS</b> , Page 32 for identification of all Electrical Wiring Service Parts.			



# ELECTRICAL ASSEMBLIES (GHS 7.0 BUSHEL COMPONENTS)

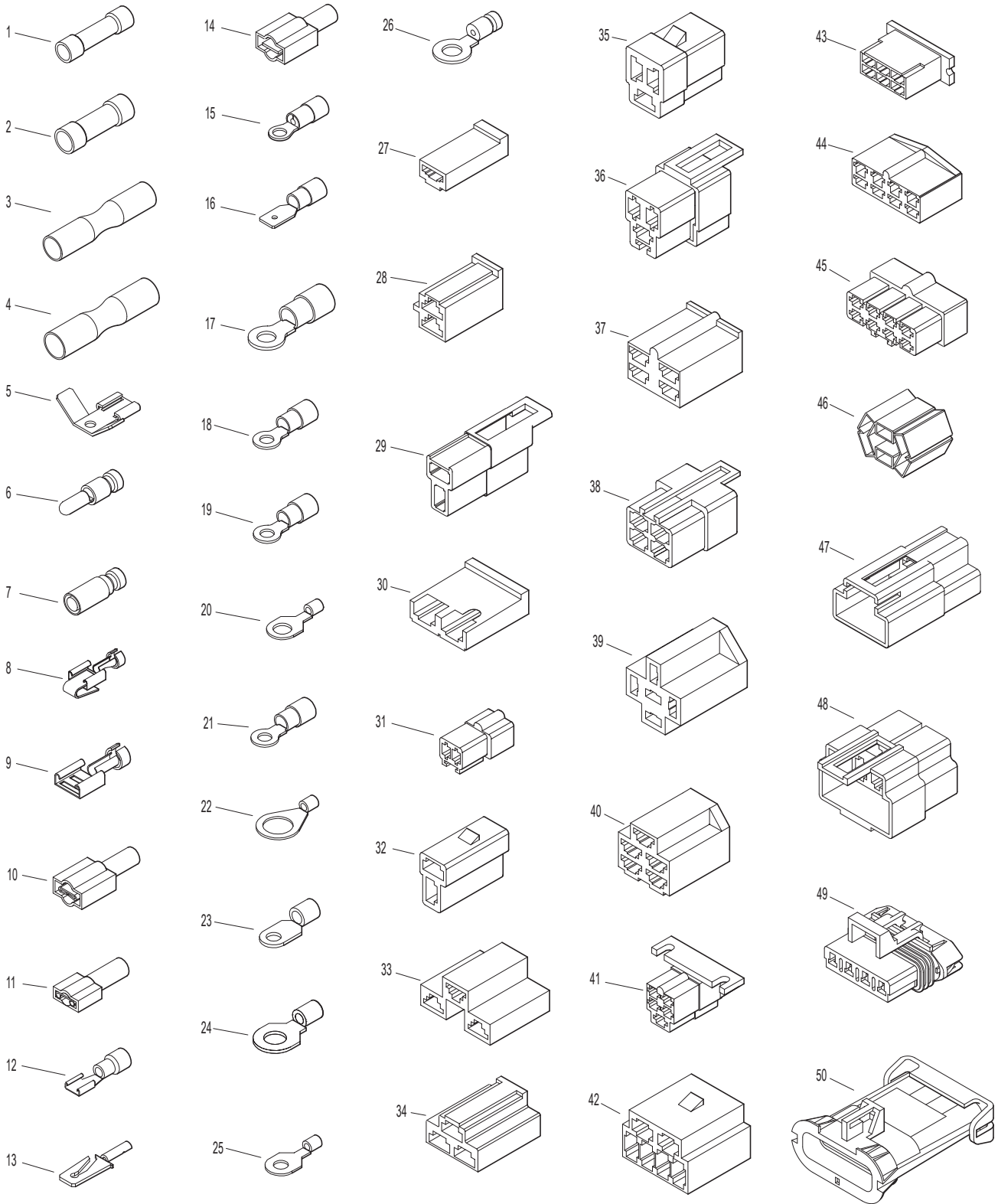


Beginning S/N 134494  
 Effective Date 05-20-15  
 Use only genuine **Walker**® replacement parts.

# ELECTRICAL CONNECTORS

ITEM NO.	PART NO.	DESCRIPTION	NO. REQ'D	ITEM NO.	PART NO.	DESCRIPTION	NO. REQ'D
<b>Electrical Wiring Service Parts</b>				29	7942-1	2-Way Locking Connector, Female	*
1	5996-1	16-14 GA Butt Connector	*	30	7942-2	2-Way Connector, Male	*
2	5996-11	12-10 GA Butt Connector	*	31	7942-3	2-Way Connector, Female	*
3	7942-14	16-14 GA Shrink Connector	*	32	7942-10	2-Way Locking Connector, Male	*
4	7942-13	12-10 GA Shrink Connector	*	33	5940-8	3-Way Connector, Male	*
5	5995-1	Wire Terminal Adapter	*	34	7942-9	3-Way Connector, Male	*
6	5996-4	16-14 GA Bullet Conn., Male	*	35	8944	3-Way Locking Connector, Male	*
7	5996-5	16-14 GA Bullet Conn., Female	*	36	8944-1	3-Way Locking Connector, Female	*
8	5940-4	16-14 GA Spg. Loaded Term., Female	*	37	7942-11	4-Way Connector, Male	*
9	5940-7	Wire Clip, Female	*	38	7942-12	4-Way Connector, Female	*
10	5996	1/4 x 16-14 GA QKS Term., Female	*	39	7942-5	5-Way Connector, Male	*
11	5996-2	3/16 x 22-18 GA QKS Term., Female	*	40	5940-2	5-Way Connector, Male	*
12	7996	16-14 GA QKS Term., Female	*	41	8942-1	5-Way Connector, Female	*
13	5940-5	16-14 GA Spg. Loaded Term., Male	*	42	7942-6	6-Way Connector, Male	*
14	5996-0	1/4 x 22-18 GA QKS Term., Male	*	43	7942-7	6-Way Connector, Male	*
15	5996-18	16-14 GA Ring Term. (#8) Nylon Insulated	*	44	7942-8	8-Way Connector, Male	*
16	7996-1	1/4 x 16-14 GA QKS Term., Male	*	45	8942-2	8-Way Connector, Female	*
17	5996-8	6 GA Ring Lug (5/16)	*	46	8942-3	5-Way Connector, Male	*
18	5996-9	22-18 GA Ring Term., #10	*	47	5940-9	3-Way Connector (M)	*
19	5996-10	16-14 GA Ring Term. (5/16)	*	48	7942-15	6-Way Connector (Female)	*
20	5996-12	12-10 GA Ring Term. (5/16)	*	49	7940-3	Packard Plug (Male)	*
21	5996-13	16-14 GA Ring Term., # 10	*	50	7940-4	Packard Plug (Female)	*
22	5996-15	12-10 GA Ring Term. (1/2)	*	* Service Part Only			
23	5996-16	6 GA Ring Terminal (1/4)	*	<b>NOTE:</b> Not all Electrical Connectors are used with all assemblies.			
24	5996-17	16-14 GA Ring Term. (1/4)	*	<b>NOTE:</b> Refer to <b>ELECTRICAL ASSEMBLIES</b> , Pages 28-31 for locations of Wiring Harness, Electrical Components and of all Electrical Wiring Service Parts.			
25	5996-20	12-10 GA Ring Term. (1/4)	*				
26	5996-21	12-10 GA Ring Term., #10	*				
27	7942-4	Single Connector, Male	*				
28	8942	2-Way Connector, Male	*				

# ELECTRICAL CONNECTORS

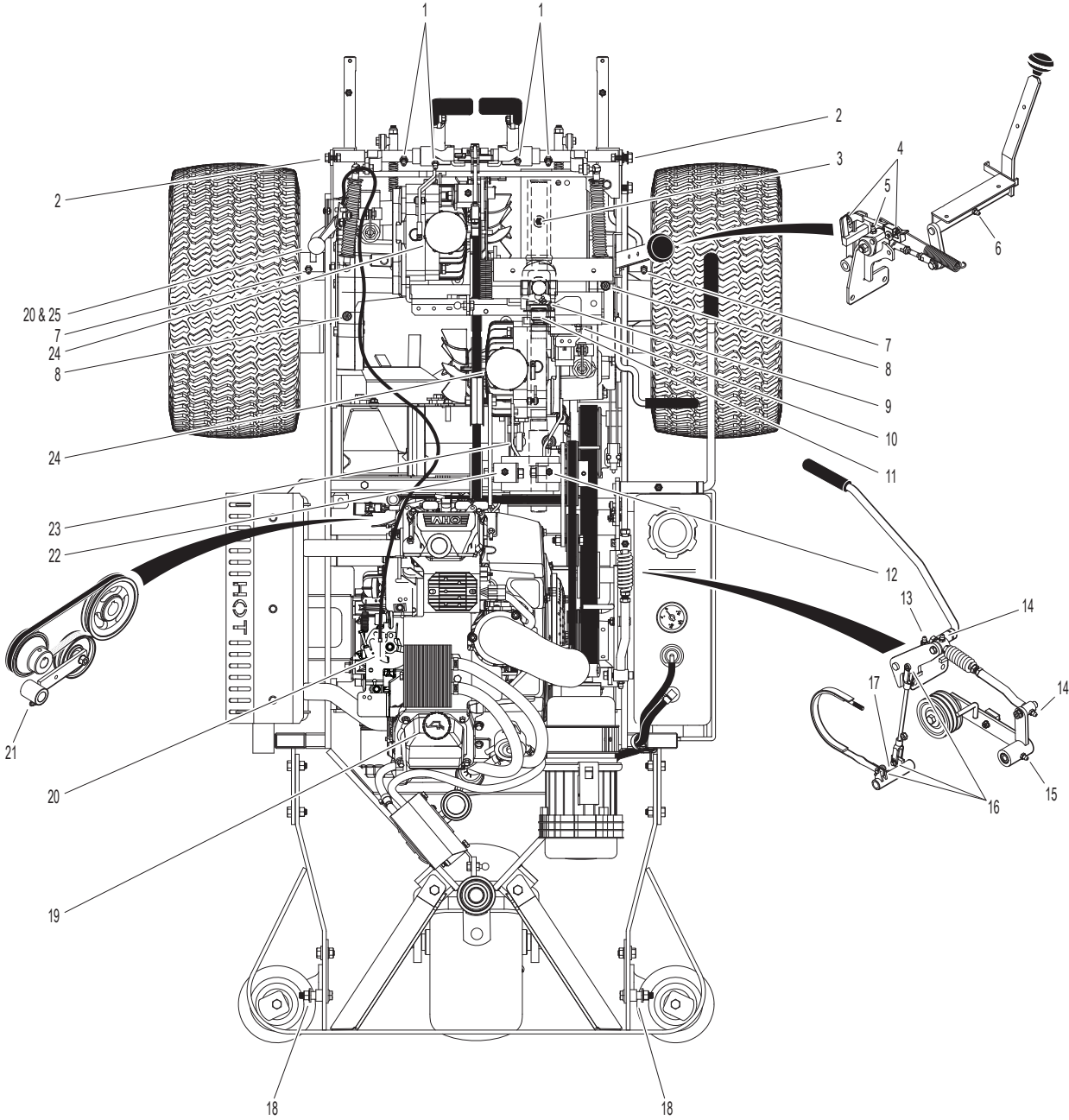


Beginning S/N 134494  
Effective Date 05-20-15  
Use only genuine Walker® replacement parts.

# LUBRICATION POINTS

ITEM NO.	LOCATION	LUBRICATION TYPE	NO. PLACES	ITEM NO.	LOCATION	LUBRICATION TYPE	NO. PLACES
<b>Lubrication Points</b>				17	Brake Actuator Pivot	Grease	1
1	Steering Lever Pivot	Grease	4	18	Catcher Hinge Point	Oil	2
2	Body Hinge Point	Oil	2	19	Engine Oil Filler	Oil**	1
3	Deck-to-PTO Coupling (Grease Spline Slide Area)	Grease	1	20	Throttle Control Cable Ends	Oil	2
4	FSC Actuator Rod Pivot Pins	Oil	2	21	Belt Tightener Pivot, Blower Drive	Grease	1
5	(FSC) Friction Body Pivot	Grease	1	22	Belt Tightener Pivot, Ground Drive	Grease	1
6	FSC Lever Pivot	Grease	1	23	PTO Gearbox Dipstick	Oil**	1
7	Deck Support Arm Pivot	Grease	2	24	Hydrostatic Drive	Oil**	2
8	Gear Axle	Oil**	2	25	Throttle Control Pivot	Oil	1
9	Universal Joint Tube Assembly	Grease*	1	* Grease every 25 hours.			
10	Parking Brake Lever	Grease	1	** See <b>Operator's Manual</b> for procedure for checking and changing oil in Engine Crankcase, Hydrostatic Transmissions, and Gear Axles.			
11	Universal Joint Quick Connect Spline (Grease Slide Area)	Grease	1	<b>NOTE:</b> See Model C19i <b>Operator's Manual</b> (P/N 6000-19) for proper lubrication intervals.			
12	Belt Tightener Pivot, Jackshaft Drive	Grease	1				
13	PTO Clutch Lever Pivot	Grease	1				
14	Clutch Actuator Push Rod	Grease	2				
15	Belt Tightener Pivot, PTO Clutch	Grease	1				
16	Brake Actuator Rod and Brake Band Pivot Pins (Clevis)	Oil	3				

# LUBRICATION POINTS



Beginning S/N 134494  
Effective Date 05-20-15  
Use only genuine **Walker**® replacement parts.

# WIRING SCHEMATIC

## WALKER MODEL C19i Beginning S/N 134494

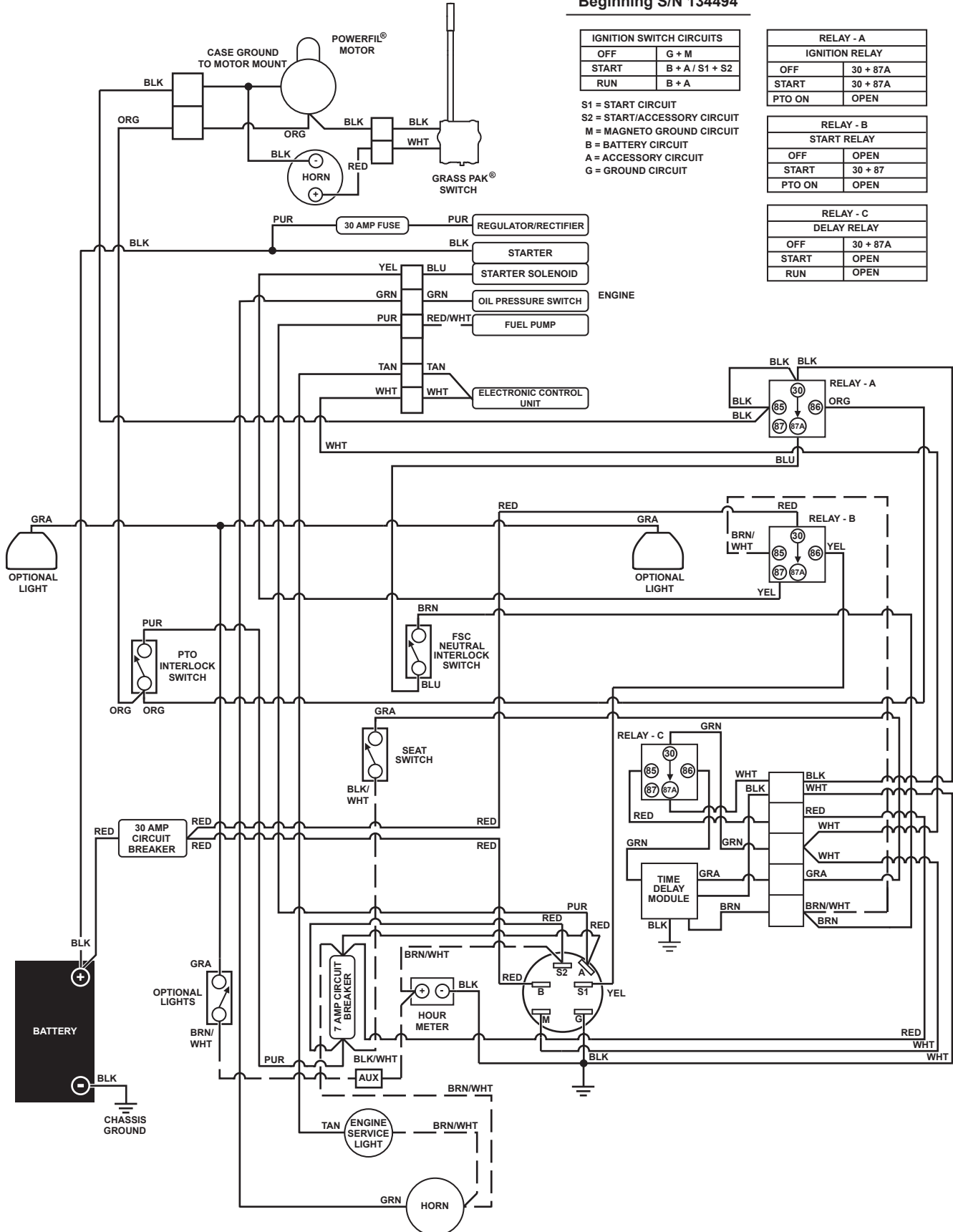
IGNITION SWITCH CIRCUITS	
OFF	G + M
START	B + A / S1 + S2
RUN	B + A

S1 = START CIRCUIT  
S2 = START/ACCESSORY CIRCUIT  
M = MAGNETO GROUND CIRCUIT  
B = BATTERY CIRCUIT  
A = ACCESSORY CIRCUIT  
G = GROUND CIRCUIT

RELAY - A IGNITION RELAY	
OFF	30 + 87A
START	30 + 87A
PTO ON	OPEN

RELAY - B START RELAY	
OFF	OPEN
START	30 + 87
PTO ON	OPEN

RELAY - C DELAY RELAY	
OFF	30 + 87A
START	OPEN
RUN	OPEN



Beginning S/N 134494

Effective Date 05-20-15

Use only genuine Walker® replacement parts.

# LIMITED WARRANTY FOR WALKER COMMERCIAL RIDER MOWER

## 1. WHAT THIS WARRANTY COVERS, AND FOR HOW LONG:

Walker Manufacturing company will, at its option, repair or replace, without charge, any part covered by this warranty which is found to be defective in material and/or workmanship within one (1) year\* after date of sale to the original retail purchaser unless the product is used for rental purposes, in which case this warranty is limited to ninety (90) days. At Walker's request, customer will make the defective part available for inspection by Walker and/or return the defective part to Walker, transportation charges prepaid. All parts and components of the Walker Mower are covered by this warranty **except** the following components which are warranted separately by their respective manufacturers:

Kohler Engine  
Battery

The available warranties covering these items are furnished with each mower. Walker does not assume any warranty obligation, liability or modification for these items, which are covered exclusively by the stated warranty of the respective manufacturers noted above.

\* Extended warranties are offered for the following powertrain components:

- A three (3) year unlimited hour warranty is offered for the Walker P/N 6200-9 Gear Axle Assembly.
- A three (3) year or 3000 hour (whichever comes first) warranty is offered for Eaton Model 7 Hydrostatic transmissions; covers full cost of replacement up to 1000 hours of use, and after 1000 hours warranty coverage is prorated against 3000 hours.

## 2. WHAT THIS WARRANTY DOES NOT COVER:

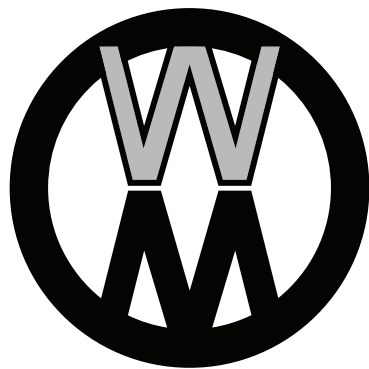
- A. This warranty does not cover defects caused by depreciation or damage caused by normal wear, accidents, improper maintenance, improper use or abuse of the product, alterations, or failure to follow the instructions contained in the Operator's Manual for operation and maintenance.
- B. The customer shall pay any charges for making service calls and/or for transporting the mower to and from the place where the inspection and/or warranty work is performed.

## 3. HOW TO OBTAIN SERVICE UNDER THIS WARRANTY:

Warranty service can be arranged by contacting the dealer where you purchased the mower or by contacting Walker Manufacturing Company, 5925 East Harmony Road, Ft. Collins, CO 80528. Proof of the date of purchase may be required to verify warranty coverage.

## 4. WARRANTY LIMITATION:

- A. **THERE IS NO OTHER EXPRESS WARRANTY. ANY WARRANTY THAT MAY BE IMPLIED FROM THIS PURCHASE INCLUDING MERCHANTABILITY AND FITNESS FOR A PARTICULAR PURPOSE IS HEREBY LIMITED TO THE DURATION OF THIS WARRANTY AND TO THE EXTENT PERMITTED BY LAW ANY AND ALL IMPLIED WARRANTIES ARE EXCLUDED.** Some states do not allow limitations on how long an implied warranty lasts, so the above limitations may not apply to you.
- B. **WALKER WILL NOT BE LIABLE FOR ANY INCIDENTAL, CONSEQUENTIAL, OR SPECIAL DAMAGES AND/OR EXPENSES IN CONNECTION WITH THE PURCHASE OR USE OF THE MOWER.** Some states do not allow the exclusion or limitation of incidental or consequential damages, so the above limitation(s) or exclusion(s) may not apply to you.
- C. Only the warranty expressed in this limited warranty shall apply and no dealer, distributor, or individual is authorized to amend, modify, or extend this warranty in any way. Accordingly, additional statements such as dealer advertising or presentations, whether oral or written, do not constitute warranties by Walker, and should not be relied upon.
- D. This warranty gives you specific legal rights, and you may also have other rights which vary from state to state.



**WALKER**

**WALKER MFG. CO. • 5925 E. HARMONY ROAD, FORT COLLINS, CO 80528 • (970) 221-5614**  
**FORM NO. 102016      PRINTED IN USA      [www.walkermowers.com](http://www.walkermowers.com)      ©2016 WALKER MFG. CO**