

WALKER

Illustrated Parts Manual

S18



Note: The S18 is shown equipped with the optional comfort seat.

Beginning S/N: 181152
P/N 5000-81

KEY TO ABBREVIATIONS USED IN THIS MANUAL

<i>Abbreviation</i>	<i>What it Represents</i>
° (Dimension)	Degrees (Angle)
" (Dimension)	inches
(-)	Negative (Polarity)
(+)	Positive (Polarity)
-1 (as deck style designation)	Standard (Aluminum) Gear Drive Deck
-2 (as deck style designation)	Heavy Duty (Cast Iron) Gear Drive Deck
-3 (as deck style designation)	Belt Drive Deck
AT	All-Terrain
CCW	Counter-clockwise
CW	Clockwise
D	Diameter
DC	Deck, Collection (number refers to size in inches)
DM	Deck, Mulching (number refers to size in inches)
DR	Deck, Rear Discharge (number refers to size in inches)
DS	Deck, Side Discharge (number refers to size in inches)
DU	Garlock (Bearing)
ESNA (Fastener)	Nylon Insert Locknut
FSC	Forward Speed Control
GA	Gauge
gal.	gallon
GHS	Grass Handling System
GR (Fastener)	Grade
HD	Heavy Duty
HP	Horse Power
ID	Identification or Inside Diameter
L	Length
LH	Left Hand (orientated with operator on seat)
LP	Low Profile
mm (Dimension)	millimeters
MS (Fastener)	Machine Screw
NS (as part number)	Item is not sold by Walker Manufacturing
OD	Outside Diameter
oz.	ounce
PFH (Fastener)	Phillips Flat Head
P/N	Part Number
PPH (Fastener)	Phillips Pan Head
PTH (Fastener)	Phillips Truss Head
PTO	Power Take-Off
QKS	Quick Slide
qt.	quart
RH	Right Hand (orientated with operator on seat)
SAE (Fastener)	Society of Automotive Engineers
SBH (Fastener)	Socket Button Head (Bolt)
SFH (Fastener)	Slotted Flat Head
SHC (Fastener)	Socket Head Cap
SHL (Fastener)	Shoulder (Bolt)
SM (Fastener)	Sheet Metal (Screw)
S/N	Serial Number
SQH (Fastener)	Square Head
SS (Fastener)	Stainless Steel
ST (Fastener)	Self-Tapping (Screw)
V	Volts

NOTE: In some instances, combinations of abbreviations may be used (e.g. PPHMS - Phillips Pan Head Machine Screw).

ILLUSTRATED PARTS LIST

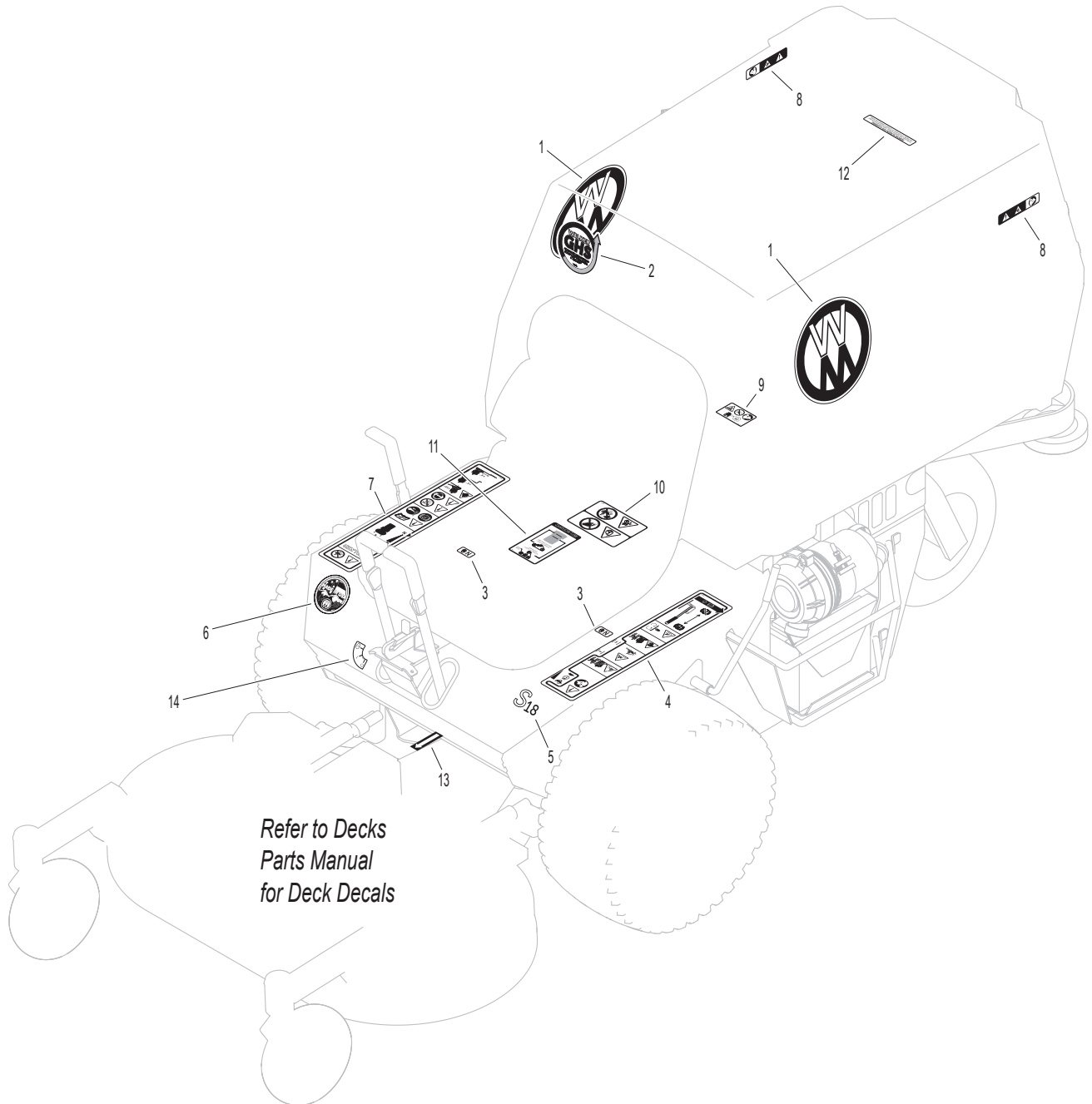
<i>Section of Tractor Covered</i>	<i>Page</i>	<i>Section of Tractor Covered</i>	<i>Page</i>
<hr/>		<hr/>	
Decals		Electrical Components	
Tractor Decals	2	Electrical Assembly	22
Body / Chassis Assemblies		Electrical Assemblies (GHS 7.0 Bushel Components).....	24
Body / Chassis Assembly	4	Maintenance	
Rear Body Assembly.....	6	Lubrication Points	26
Tractor Components		Wiring Schematic	28
Main Component Power Transmission	8	Warranty	
Engine Group	10	Limited Warranty	29
Hydrostatic Ground Drive Assemblies.....	12		
Steering Control Assemblies.....	14		
GHS Group	16		
GHS Powerfil® Assembly (7.0)	18		
GHS 7.0 Bushel Catcher Assembly.....	20		

TRACTOR DECALS

ITEM NO.	PART NO.	DESCRIPTION	LOCATION	NO. REQ'D GHS
Walker Product Decals				
1	5800-22	Walker (8" Round)	7.0 Bushel Catcher (one on each side)	2
2	5813-2	Decal, 4" Grass-Pak Powerfil®	Powerfil® Cover Plate	1
3	9804-1	Axle Lockout	Chassis	2
4	8600-69	LH Fender	Body, LH near Seat	1
5	8821-21	Decal, S18	Body	1
6	5856-1	Made in USA	Body	1
7	8600-70	RH Fender	Body, RH near Seat	1
Danger Decals Warning Decals Caution Decals				
8	8600-10	Danger, Pinch Point	7.0 Bushel Catcher Mounting Frame Assembly (one on each side)	2
9	8600-12	Danger, Engine Exhaust	Engine	1
10	8600-4	Danger, Rotating Blower Blades	Body, Near Body Chute	1
11	5107	Decal, Belt Routing	Body, Underside	1
Maintenance Decals				
12	5869	Removable Screen	7.0 Bushel Catcher Removable Screen	1
13	6875	PTO Alignment Arrow	Universal Joint Tube Assembly	1
14	8600-54	Decal, Ignition Switch	Front Body	1

NOTE: All parts requiring decals are shipped with decals applied.

TRACTOR DECALS



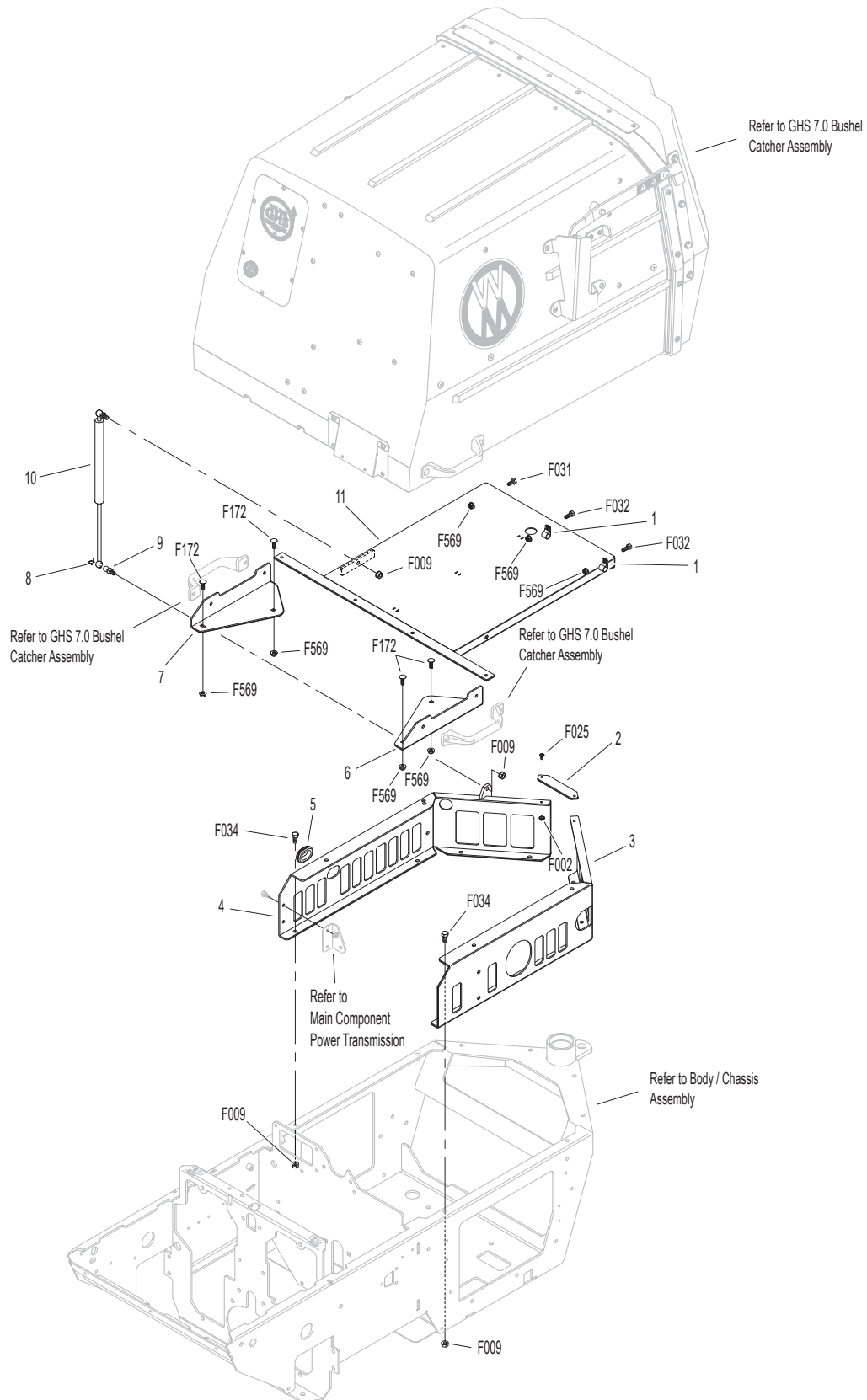
BODY / CHASSIS ASSEMBLY

ITEM NO.	PART NO.	DESCRIPTION	NO. REQ'D	ITEM NO.	PART NO.	DESCRIPTION	NO. REQ'D
Seat Assembly				Deck Support Arm & Hitch Assemblies			
1	5103-3	Seat W/Switch	1	38	5830	Grease Fitting	2
2	7440-5	Shock Mount (1-1/4 x 3/4)	4	39	6840-1	Support Arm Bushing (2-1/16)	2
Rear Bumper Assembly				40	6431-5	Deck Arm Mount	2
3	7516-5	Catcher Pivot Bushing	2	41	6431-9	Deck Arm Support, LH (Includes Item # 38)	1
4	5517-14	Rear Bumper	1	42	5775-2	Hitch Pin (#6)	2
5	7517-3	Catcher Pivot Plate	2	43	5303-5	Deck Arm Hydro Mount, LH	1
6	5162	Roller Wheel (5" Rubber)	2	44	5303-12	Hydro Crossmember Brace	1
7	5517-12	Catcher Support Brace	2	45	5303-6	Deck Arm Hydro Mount, RH	1
Body Assembly				46	6431-8	Deck Arm Support, RH (Includes Item # 38)	1
8	5100-23	Welded Body	1	Fasteners			
9	4102-1	Body Guide, Upper	1	F004	1/4-20 Keps Nut		14
10	7844	Rubber Bumper (1.25 x .250)	2	F005	1/4-20 ESNA Nut		1
11	NS	Body ID Plate	1	F009	5/16-18 Whiz Locknut		30
12	5180	Edge Molding, Lever Opening	2	F013	3/8-16 Whiz Locknut		6
13	4504-3	Hinge (19")	1	F014	3/8-16 ESNA Nut		2
Tilt-Up Latch Assembly**				F016	1/2-13 Self-Locking Nut		1
14	5847	Plastic Tip	1	F020	5/16-18 ESNA Nut		1
15	5744-20	Spring Arm, Tilt-Up Latch	1	F029	1/4-20 x 1/2 Hex Bolt		4
16	5744-10	Spring Pivot Bushing	1	F031	1/4-20 x 5/8 Hex Bolt		2
17	5744-15	Compression Spring (3/8 x 5/8)	1	F034	5/16-18 x 3/4 Hex Bolt		14
18	5744-13	Mount Angle, LH	1	F038	3/8-16 x 1 Hex Bolt		4
19	5744-12	Hook, Tilt-Up Latch	1	F041	3/8-16 x 1-3/4 Hex Bolt		2
20	5744-14	Mount Angle, RH	1	F042	3/8-16 x 2-1/4 Hex Bolt		2
Chassis Assembly				F049	5/16 SAE Washer		8
21	9046	Gas Tank Mount	1	F053	7/16 Int. Star Lock Washer		2
22	5300-19	Chassis Frame	1	F059	3/8 Wave Spring Washer		2
23	5267-1	Retainer Collar (1") (Includes Item # F413)	1	F093	5/16-18 x 1 Hex Bolt		1
24	5270-1	Ball Bearing	2	F116	1/4-20 x 1-1/4 Hex Bolt		1
25	5420-2	Tail Wheel Fork	1	F151	3/8-16 x 7/8 Hex Bolt		4
26	8769-12	Bearing Cup (1/2 ID)	2	F200	7/16-20 x 3 Grade 8 Bolt		2
27	5037-1	Bearing, Tail Wheel	2	F206	#2 x 3/16 Drive Pin		2
28	5035	Tail Wheel & Tire Assembly (13 x 6.50-6)	1	F226	5/16-18 x 7/8 Hex Bolt		4
	5035-1	Tail Wheel Tire (13 x 6.50-6)	*	F241	.375 x .875 x .10 Washer		4
	5036	Tail Wheel & Hub (6 x 4.5)	*	F246	1/4-20 x 1/2 PTHMS		8
29	5038-1	Axle Spacer Tube (6-5/8)	1	F292	1/2-13 x 8-1/2 Hex Bolt, GR 5		1
30	6390-4	Battery Guard	1	F341	Coil Roll Pin (7/64 x 9/16)		1
31	5300-21	Debris Shield	1	F342	5/16 Conical Washer		2
32	5146	10mm Ball Stud	2	F413	5/16-24 x 5/16 Set Screw		2
33	5145-4	Gas Spring Assembly (Includes Item # 32)	1	F438	5/16-18 x 2-3/4 Hex Bolt		4
34	7383-1	Body Latch Hook	1	F477	1/4-20 x 5/8 Carriage Bolt		2
35	7854	Plastic Tip, Red	1	F569	1/4-20 Flange Top Lock Nut		2
36	7222	Extension Spring (1/4 x 3)	1	F570	3/8-16 Flange Top Lock Nut		4
37	4102-2	Body Guide, Lower	1	F637	Washer .835 x .505 x .125		2
				*	Service Part Only		
				**	Complete Tilt-Up Latch Assembly Kit available by ordering kit # 5744-5.		

REAR BODY ASSEMBLY

ITEM NO.	PART NO.	DESCRIPTION	NO. REQ'D	ITEM NO.	PART NO.	DESCRIPTION	NO. REQ'D
Rear Body Assembly				Fasteners			
1	6832	Cable Clamp (9/16 x 1/4)	2		F002	10-24 Keps Nut	2
2	5100-13	Rear Body Tie-In	1		F009	5/16-18 Whiz Locknut	10
3	5100-35	Rear Body Panel, LH	1		F025	10-24 x 3/8 PPHMS	2
4	5100-36	Rear Body Panel, RH	1		F031	1/4-20 x 5/8 Hex Bolt	1
5	5977-8	Grommet (1 x 1-3/4)	1		F032	1/4-20 x 3/4 Hex Bolt	2
6	8515-16	Catcher Handle Plate, RH	1		F034	5/16-18 x 3/4 Hex Bolt	8
7	8515-15	Catcher Handle Plate, LH	1		F172	1/4-20 x 3/4 Carriage Bolt	4
8	7147	Spring Clip	2		F569	1/4-20 Flange Top Lock Nut	7
9	7146	13mm Ball Stud	2	NOTE: Rear Bumper Assembly for GHS Models is not shown here. Refer to BODY / CHASSIS ASSEMBLY , Page 4.			
10	7145	Gas Spring Assembly (Includes Items # 8 & 9)	1				
11	6515	Catcher Support Frame	1				

REAR BODY ASSEMBLY



MAIN COMPONENT POWER TRANSMISSION

ITEM NO.	PART NO.	DESCRIPTION	NO. REQ'D	ITEM NO.	PART NO.	DESCRIPTION	NO. REQ'D
PTO Drive Assembly				Fasteners			
1	7201-3	Fiberglide Bearing	4	F004		1/4-20 Keps Nut	6
2	7201-7	Inner Race (2-5/8)	2	F009		5/16-18 Whiz Locknut	6
3	6358-12	PTO Tensioner Arm (Includes Items # 1 & 4)	1	F013		3/8-16 Whiz Locknut	5
4	5830	Grease Fitting	1	F020		5/16-18 ESNA Nut	1
5	6358-9	PTO Tensioner Bracket	1	F029		1/4-20 x 1/2 Hex Bolt	2
6	5146	10mm Ball Stud	2	F031		1/4-20 x 5/8 Hex Bolt	4
7	6358-8	Dampener Mount	1	F034		5/16-18 x 3/4 Hex Bolt	4
8	8250	Brake Spring (1/2 x 2-1/2)	1	F046		3/8-16 x 3-1/2 Hex Bolt	2
9	6410-10	Clutch Stop	1	F051		3/8 SAE Washer	2
10	2215-6	Pressure Dampener	1	F066		1/4 x 1/4 x 3/4 Key	1
11	6410-2	Clutch	1	F067		3/16 x 3/16 x 1 Key	1
12	5234-8	PTO Drive Belt (B34K)	1	F108		3/8-16 x 2 Hex Bolt	2
13	4401-4	Washer (1-3/4 x 3/8 x 1/4 Thk)	2	F241		.375 x .875 x .10 Washer	1
14	5238-6	PTO Drive Pulley (Includes Item # F066)	1	F438		5/16-18 x 2-3/4 Hex Bolt	1
15	5270	Bearing W/Collar (1")	1	F579		3/8-16 x 1 Hex Bolt Grade 8	1
16	6273-7	Jackshaft	1	F667		3/8-16 x 1-5/8 Hex Bolt	1
17	6394-8	Jackshaft Bearing Housing	1	F670		3/8-24 x 1 Hex Bolt Grade 8	1
18	5270-1	Ball Bearing	2	F683		1/4 x 1/4 x 1-1/8 Key	1
19	6394-11	Jackshaft Spacer	1				
20	6394-9	Jackshaft Latch Strap	1				
21	7243	Clutch Idler Pulley	1				
Engine Belt Tightener Assembly							
22	5247-2	V-Groove Idler (4")	2				
23	7240-5	Jackshaft Pulley (Includes Item # F683)	1				
24	5237-7	Engine Pulley	1				
25	4230-3	Engine Drive Belt	1				
26	6325-7	Spacer .750 x .375 x .4375	1				
27	6358-7	Tensioner Bracket	1				
28	6358-13	Engine Belt Tensioner (Includes Items # 1 & 30)	1				
29	5221-1	Extension Spring (3/4 x 5)	1				
30	5830-3	Grease Fitting (45 Degree)	1				

ENGINE GROUP

ITEM NO.	PART NO.	DESCRIPTION	NO. REQ'D	ITEM NO.	PART NO.	DESCRIPTION	NO. REQ'D
Fuel Tank Assembly				Throttle and Choke Assemblies			
1	5082-4	2-1/4 Ratchet Fuel Cap	1	32	8108-4	Control Cable (58"), Choke	1
2	8055-2	Fuel Tank Gauge	1	33	4108-1	Control Cable (56-1/2"), Throttle	1
3	M246	Fuel Line, Tank to Filter (1/4 x 8-1/2")	1**	34	5108-1	Control Lever, Throttle and Choke	2
4	5879-3	Hose Clamp (1/2)	3	35	5108-5	Throttle Control Knob, Red	1
5	5083-8	Tank Tube (13")	1	36	5108-11	Friction Washer (.062)	1
6	8043-8	Roll Over Valve	1	37	5108-6	Choke Control Knob, Black	1
7	5083-1	Bushing, Rubber	1	38	7108	Control Assembly, Throttle and Choke (Includes Items # 34, 36, 39-41 & F642)	*
8	5977-7	Roll Over Grommet (.900 x 1-1/2)	1		4108	Throttle Control and Cable Assembly (Complete Control and Cable Assembly)	*
9	5020	Fuel Filter	1		8109	Choke Control and Cable Assembly (Complete Control and Cable Assembly)	*
10	5975-3	Cable Tie (#50 x 7")	3				
11	7833-2	Cable Clamp (1 x 1/4)	2	39	5108-8	Control Bracket	2
12	M246	Fuel Line, Filter to Engine (1/4 x 21")	1**	40	5108-10	Friction Washer (.125)	1
13	M113	Fuel Line (3/16 x 26")	1**	41	5108-7	Control Lock Tab	2
14	5086-7	Hose (1/4 x 6)	1	42	5172	Bearing, Delrin (.250 x .375 x .250)	2
15	5020-2	Fuel Filter, In Tank	1				
16	6055-2	Fuel Tank, 4.0 Gal. Gas (Black) (Includes Items # 2, 5, 6, 8, 14 & 15)	1				
Engine Assembly				Fasteners			
17	5303-11	Engine Support Brace	1	F002		10-24 Keps Nut	6
18	4104-9	Heat Shield, Aluminum	1	F004		1/4-20 Keps Nut	4
19	NS	18 HP Engine (Briggs & Stratton)	1	F005		1/4-20 ESNA Nut	2
20	5013-16	Exhaust Clamp (1-1/4")	1	F009		5/16-18 Whiz Locknut	7
21	5013-13	Muffler Pipe Extension	1	F025		10-24 x 3/8 PPHMS	4
22	6545-3	Countersunk Washer	1	F034		5/16-18 x 3/4 Hex Bolt	3
				F049		5/16 SAE Washer	1
				F050		1/4 SAE Washer	2
				F115		#8 SAE Washer	2
				F164		10-24 x 1/4 x 3/8 SHL Bolt	2
				F183		.312 x .700 x .074 Washer	4
				F184		1/4-20 x 1/2 Hex Bolt, SS	2
				F185		1/4 Internal Star Lock Washer, SS	2
				F198		.250 x .625 x .040 Washer, SS	2
				F316		5/16-18 x 1-3/4 Hex Bolt	4
				F328		M6 x 1.0 x 16 Hex Bolt	2
				F392		1/4-20 x 1 Set Screw, SS (Cup Point)	2
				F435		1/4 x 1/4 x 1-1/4 Key	1
				F481		Washer 5/16 x 1 x .125	1
				F497		M8 x 20 Hex Bolt	1
				F573		3/8-24 x 1-1/4 SFH Cap Screw	1
				F642		1/4 x .042 Belleville Washer	2

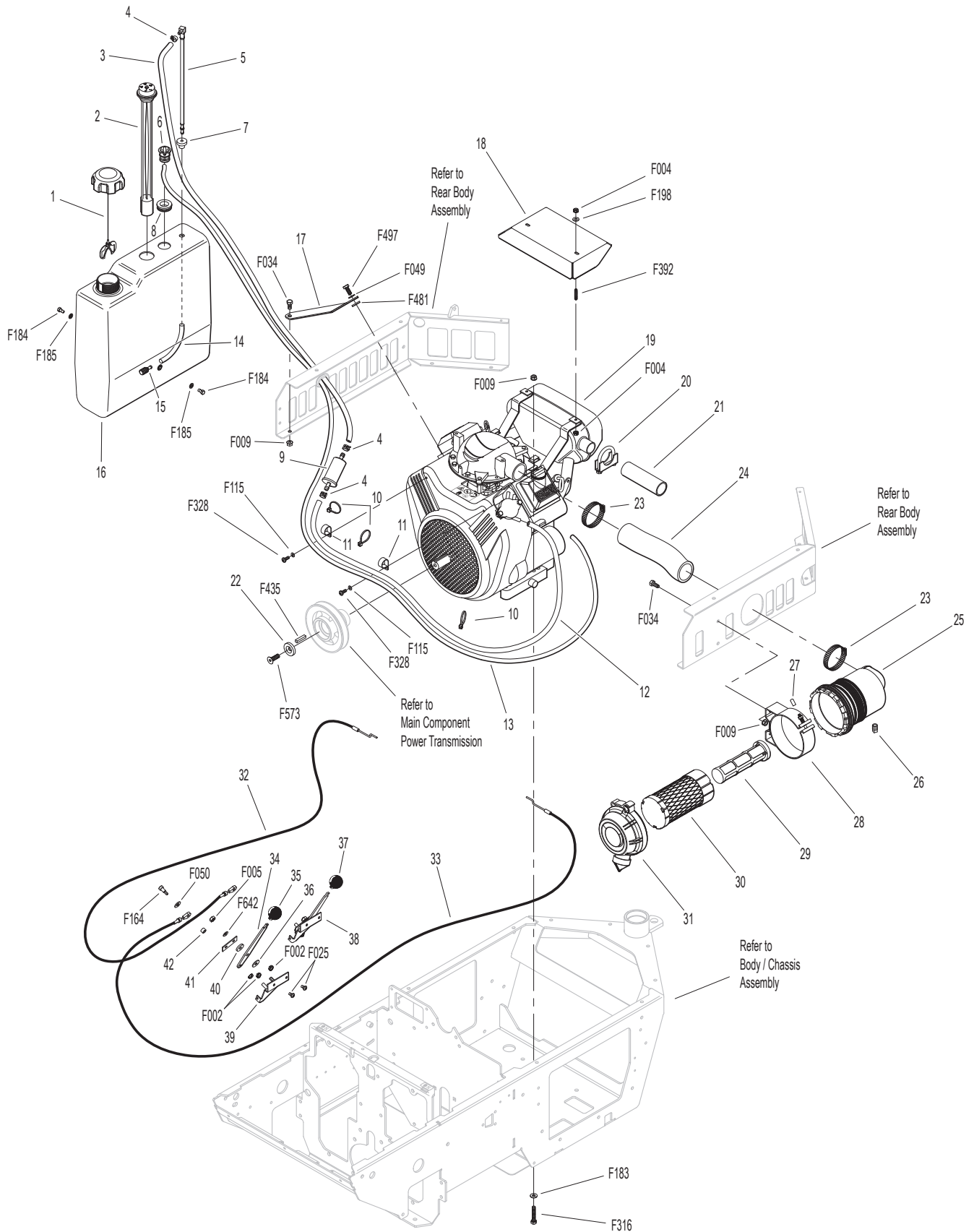
* Service Part Only

** **Required hose specifications:**

M113 - 3/16" ID fuel/oil/vapor hose (Gates 4219-0093 or equivalent)

M246 - 1/4" ID low permeation (<15g/m²/day) fuel hose (Parker 38904 or equivalent)

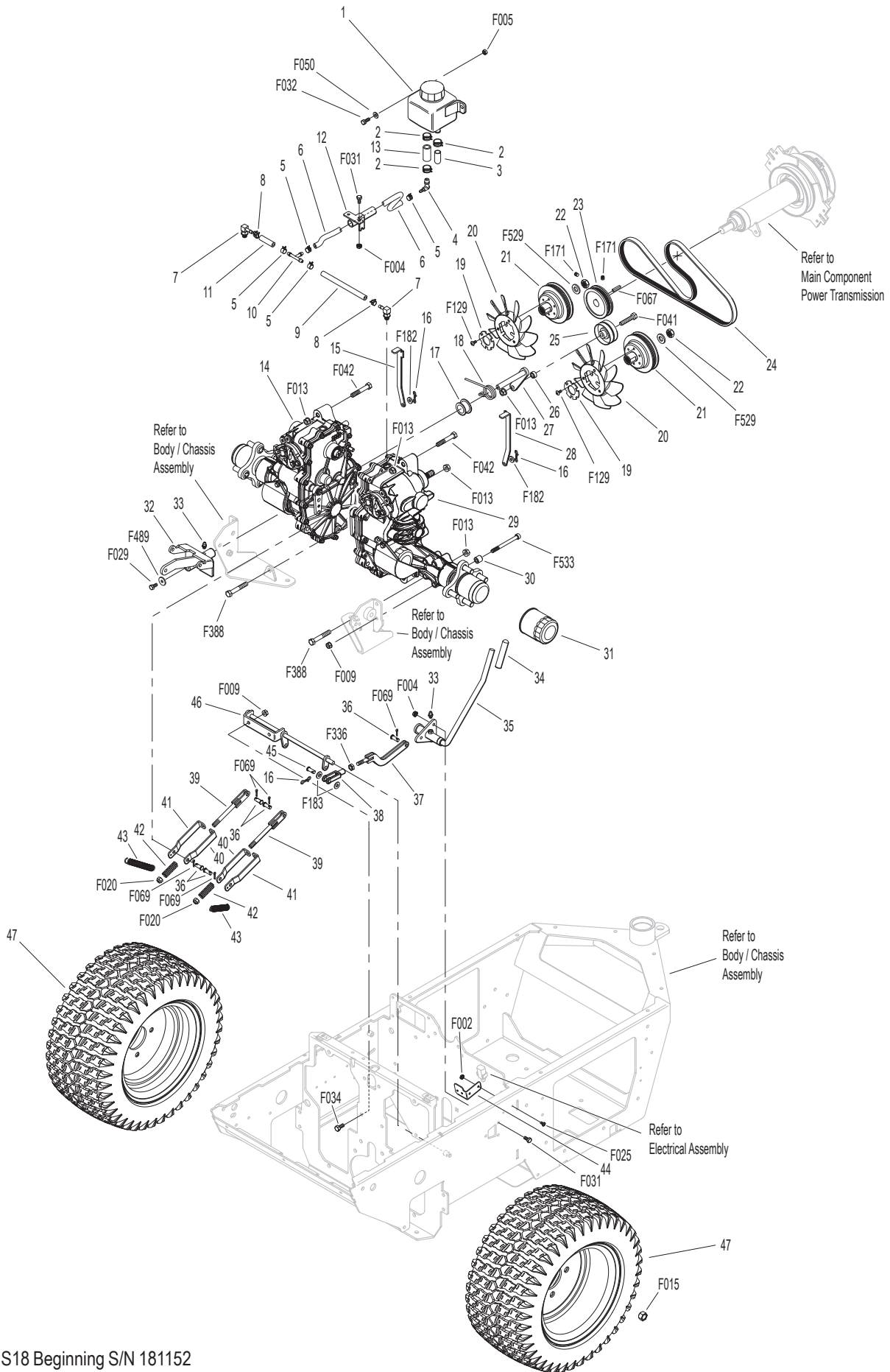
ENGINE GROUP



HYDROSTATIC GROUND DRIVE ASSEMBLIES

ITEM NO.	PART NO.	DESCRIPTION	NO. REQ'D	ITEM NO.	PART NO.	DESCRIPTION	NO. REQ'D
Transaxle Reservoir Assembly				40	6406-4	Parking Brake Pull Mount, Inner	2
1	2025-1	Oil Expansion Reservoir (71327)	1	41	6406-5	Parking Brake Pull Mount, Outer	2
2	5879-8	Hose Clamp (13/16)	3	42	5665-1	Compression Spring (2-1/2)	2
3	2025-8	Reservoir Bottom Caps	1	43	5222	Extension Spring (1/2 x 3-1/4)	2
4	4025-3	Elbow (1/4 x 1/2)	1	44	5942-19	Parking Brake Safety Switch Mount	1
5	5879-3	Hose Clamp (1/2)	4	45	2406-4	Clevis Pin (5/16 x 1-1/8)	1
6	M111	Hose (1/4 x 14")	1**	46	6406-3	Parking Brake Actuator	1
7	2025-17	Straight Thread Hose Fitting	2	Wheel Assembly			
8	5879-2	Hose Clamp (7/16)	2	47	5075-3	LP Wheel & Tire Assembly (18 x 8.50-10)	2
9	M111	Hose (1/4 x 6-5/8")	1**		5075-2	LP Tire (18 x 8.50-10)	*
10	8043-9	1/4 x 1/4 x 1/4 Tee	1		5075-5	LP Wheel (10 x 7)	*
11	M111	Hose (1/4 x 1-5/8")	1**	Fasteners			
12	7364-9	Reservoir Hose Guide	1	F002	10-24 Keps Nut		2
13	5087-1	Hose (1/2 x 1-3/4)	1	F004	1/4-20 Keps Nut		5
Ground Drive Assemblies				F005	1/4-20 ESNA Nut		2
14	5026-32	Hydro-Gear ZT3100, RH	1	F009	5/16-18 Whiz Locknut		6
15	2028-6	Lockout Arm, RH	1	F013	3/8-16 Whiz Locknut		5
16	4407-4	Bow Tie Cotter Pin	3	F015	1/2-20 Wheel Lug Nut		8
17	7364-3	Idler Spring Bushing	1	F020	5/16-18 ESNA Nut		2
18	7364-2	Torsion Spring	1	F025	10-24 x 3/8 PPHMS		2
19	5025-18	Hydro Fan Washer	2	F029	1/4-20 x 1/2 Hex Bolt		1
20	5025-17	Hydro Fan	2	F031	1/4-20 x 5/8 Hex Bolt		5
21	7244-22	Hydro Pulley (4.075) Splined	2	F032	1/4-20 x 3/4 Hex Bolt		2
22	5025-19	Hydro Fan Nut	2	F034	5/16-18 x 3/4 Hex Bolt		2
23	7241-2	Transmission Drive Pulley (3-1/4MV) (Includes Items # F067 & F171)	1	F041	3/8-16 x 1-3/4 Hex Bolt		1
24	5232-1	Ground Drive Belt (Micro V)	1	F042	3/8-16 x 2-1/4 Hex Bolt		2
25	5245-5	Idler Pulley (2-1/4)	1	F050	1/4 SAE Washer		2
26	6325-2	Spacer Bushing (5/16)	1	F067	3/16 x 3/16 x 1 Key		1
27	6345-4	Idler Arm	1	F069	3/32 x 1/2 Cotter Pin		5
28	2028-5	Lockout Arm, LH	1	F129	10-24 x 1/2 PTHMS		6
29	5025-32	Hydro-Gear ZT3100, LH	1	F171	5/16-18 x 3/8 Set Screw		2
30	9430-1	Spacer Tube	4	F182	1/4 x 5/8 x 1/8 Washer		2
31	2026-6	Hydro-Gear® Oil Filter (52114)	2	F183	.312 x .700 x .074 Washer		2
32	6215-3	Shock Mount / Body Lift Arm (Includes Item # 33)	1	F336	3/8-16 Jam Nut		1
33	5830	Grease Fitting	2	F388	3/8-16 x 2-1/2 Hex Bolt		2
Parking Brake Assembly				F489	Washer 1/4 x 7/8 x .090		1
34	7406-1	Handle Grip, Red	1	F529	Washer 1.0 OD x .515 ID x 1/8		2
35	6406-6	Parking Brake Lever (Includes Item # 33)	1	F533	Socket Cap Bolt, 5/16-18 x 3-1/2		4
36	8655-4	Clevis Pin (5/16 x 3/4)	5	* Service Part Only			
37	6406-1	Brake Actuator Pull	1	** Required hose specifications:			
38	2280	Clevis (3/8)	1	M111 - 1/4" ID fuel/oil/vapor hose (Gates 4219-0103 or equivalent)			
39	6406-2	Parking Brake Pull Rod	2				

HYDROSTATIC GROUND DRIVE ASSEMBLIES



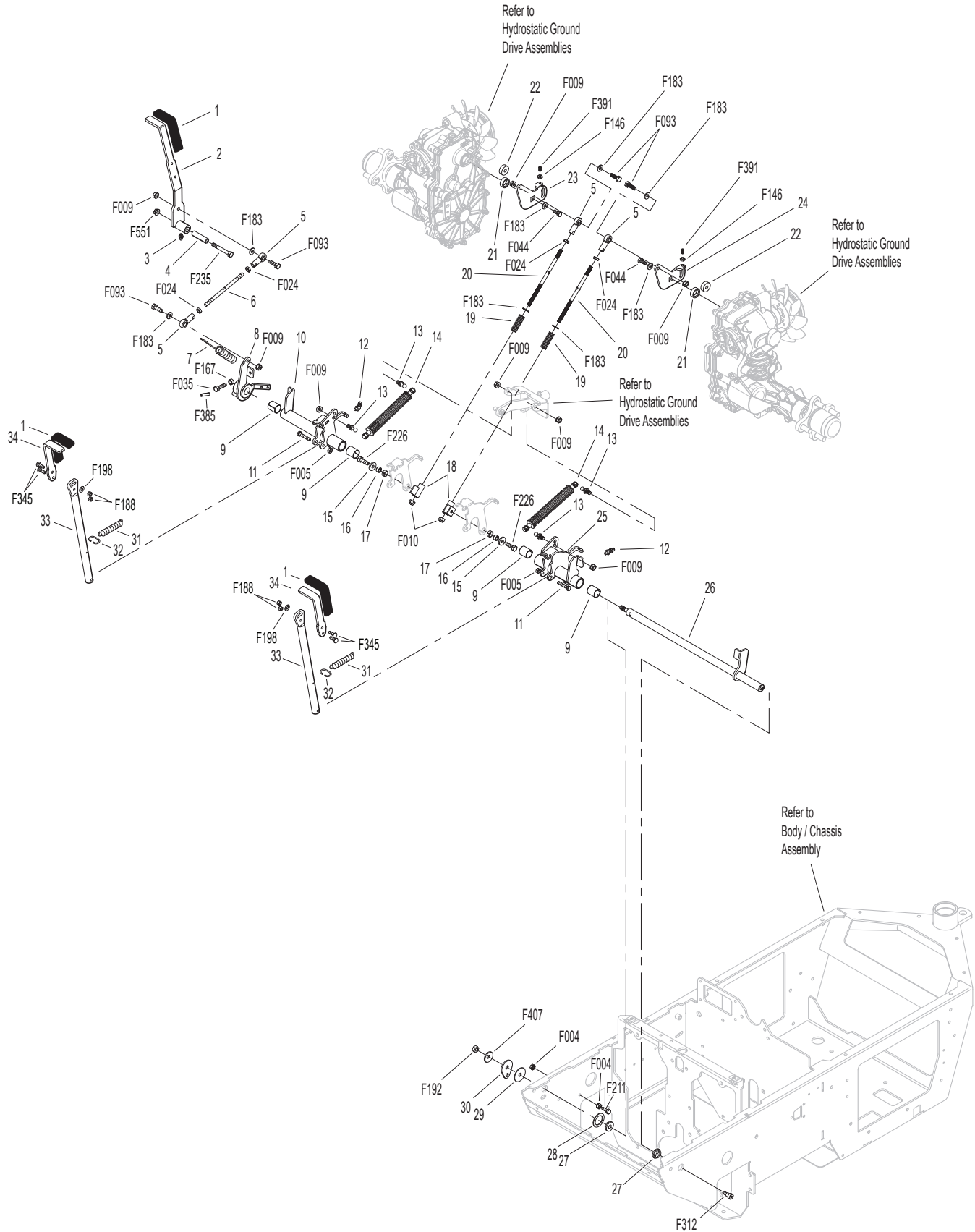
Model S18 Beginning S/N 181152
 Use only genuine **Walker**® replacement parts.

STEERING CONTROL ASSEMBLIES

ITEM NO.	PART NO.	DESCRIPTION	NO. REQ'D	ITEM NO.	PART NO.	DESCRIPTION	NO. REQ'D
Steering Lever & FSC Assemblies				Fasteners			
1	5850-2	Handle Grip, Foam (5-1/2)	3	F004		1/4-20 Keps Nut	2
2	4170-4	FSC Lever Assembly (Includes Item # 3)	*	F005		1/4-20 ESNA Nut	2
3	5830	Grease Fitting	1	F009		5/16-18 Whiz Locknut	8
4	7201-11	Inner Race (1.938)	1	F010		5/16-24 ESNA Nut	2
5	5214-4	Ball Joint (5/16-24) W/O Stud	4	F024		5/16-24 Jam Nut	4
6	4173-3	Control Rod (4-7/16)	1	F035		5/16-18 x 1-1/4 Hex Bolt	1
7	4219	Extension Spring (3/4 x 6-1/2)	1	F044		5/16-24 x 3/4 Hex Bolt	2
8	4451-9	FSC Friction Actuator	1	F093		5/16-18 x 1 Hex Bolt	4
9	8201-3	Fiberglide Bearing	4	F146		1/4-20 Jam Nut	2
10	6451-2	Speed Control Actuator, RH (Includes Items # 9 & 12)	1	F167		5/16-18 Hex Nut	1
11	4452-6	Steering Pivot (1/4-20 x 1-5/8)	2	F183		.312 x .700 x .074 Washer	8
12	5830-3	Grease Fitting (45 Degree)	2	F188		1/4-20 Self-Locking Nut	4
13	5146	10mm Ball Stud	4	F192		3/8-24 Self-Locking Nut	1
14	4199-4	Steering Lever Dampener Assembly	2	F198		.250 x .625 x .040 Washer, SS	2
15	5463-6	Washer 5/16 x 3/4 x .250	2	F211		1/4-20 x 7/8 Hex Bolt	1
16	5463-5	Steering Arm Pivot Bushing (SS)	2	F226		5/16-18 x 7/8 Hex Bolt	2
17	7201-2	Fiberglide Bearing (1/2")	2	F235		5/16-18 x 2-1/2 Hex Bolt	1
18	5463-4	Steering Lever Actuator	2	F312		3/8 x 3/8 Shoulder Bolt	1
19	5665-1	Compression Spring (2-1/2)	2	F345		1/4-20 x .770 Knurled Bolt	4
20	4213-2	Control Rod (6-3/4)	2	F385		1/4 x 1-1/4 Roll Pin	1
21	2212-3	Seal Retainer	2	F391		1/4-20 x 1/2 Set Screw, SS	2
22	2212	Transmission Control Arm Stop	2	F407		Belleville Washer 3/8 x 1.187, SS	1
23	6212-2	Transmission Control Arm, RH	1	F551		5/16-18 Flange Top Lock Nut	1
24	6212-3	Transmission Control Arm, LH	1				
25	6451-1	Speed Control Actuator, LH (Includes Items # 9 & 12)	1				
26	4451-1	Steering Pivot Shaft W/Stop	1				
27	9704-3	Pivot Rod Bushing / Plastic	2				
28	4142-2	FSC Friction Washer (1-1/2 x 1-1/32 x 1/16)	1				
29	5141	FSC Friction Washer (1-1/2 x 3/8 x 1/16)	1				
30	4142-1	FSC Cam	1				
31	5222	Extension Spring (1/2 x 3-1/4)	2				
32	5450	D-Clip	2				
33	6452-1	Steering Lever Tube W/Tab	2				
34	5453-14	Steering Lever Handle / Adjustable (Includes Items # 1 & F345)	2				

* Service Part Only

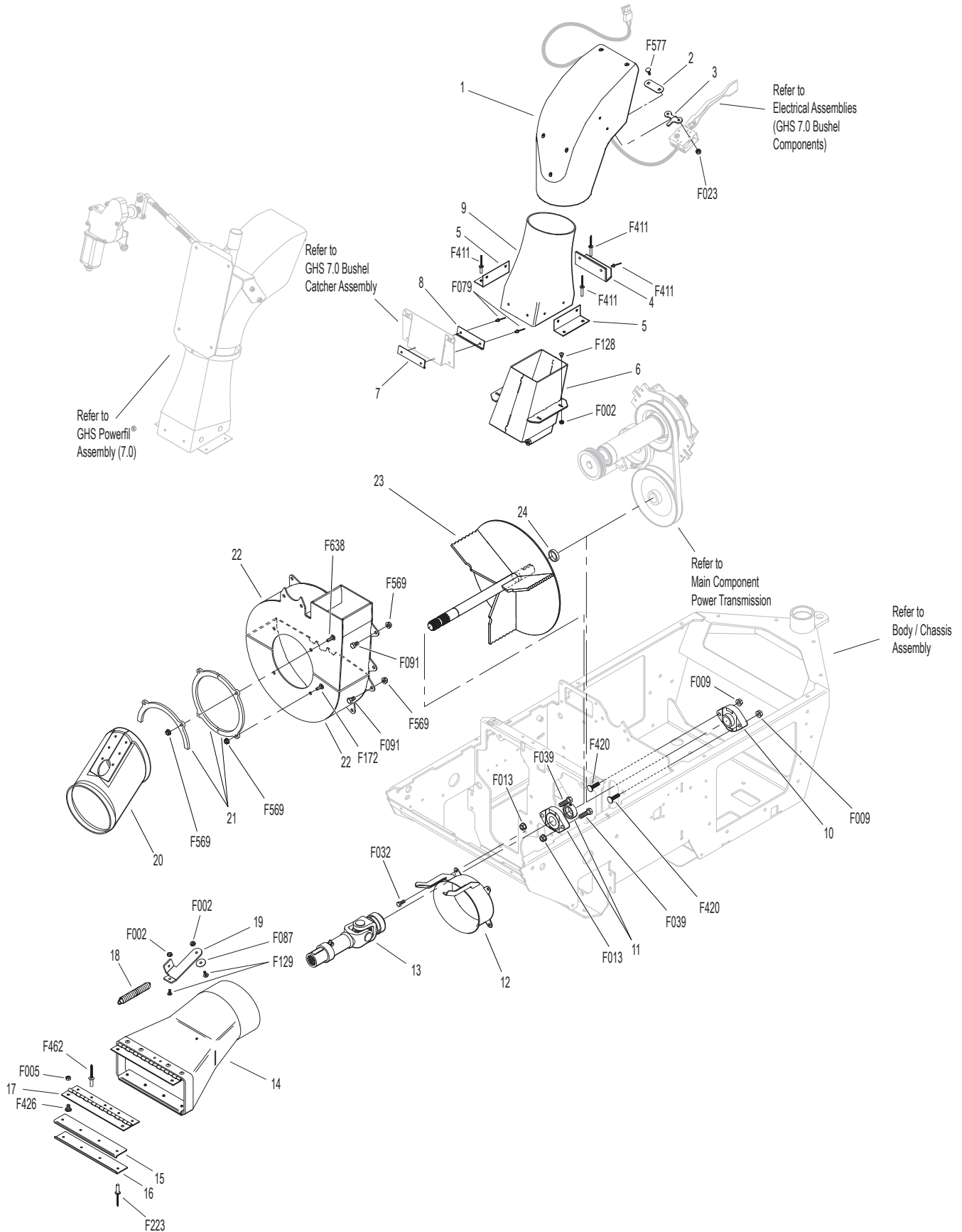
STEERING CONTROL ASSEMBLIES



GHS GROUP

ITEM NO.	PART NO.	DESCRIPTION	NO. REQ'D	ITEM NO.	PART NO.	DESCRIPTION	NO. REQ'D
Delivery Chute Assembly				Fasteners			
1	5515-4	Elbow Delivery Spout	1	F002		10-24 Keps Nut	6
2	5592-24	Backing Plate, Grass-Pak® Switch	1	F005		1/4-20 ESNA Nut	2
3	5592-23	Grass-Pak® Housing Spacer	1	F009		5/16-18 Whiz Locknut	2
4	5578-1	Rear Clip Notched, Chute Mount	1	F013		3/8-16 Whiz Locknut	2
5	5577	Side Clip, Chute Mount	2	F023		10-24 ESNA Nut	2
6	6530-6	Body Chute	1	F032		1/4-20 x 3/4 Hex Bolt	4
7	7511-5	Outside Chute Cover Lip	1	F039		3/8-16 x 1-1/4 Hex Bolt	2
8	7511-4	Inside Chute Cover Lip	1	F079		A/A66D Aluminum Pop Rivet	2
9	7511-2	7.0 Delivery Chute W/Clips (Includes Items # 4, 5, F079 & F411)	1	F087		#10 x 7/8 Fender Washer	1
				F091		5/16-18 x 5/8 Hex Bolt	9
				F128		10-24 x 3/8 PTHMS	4
				F129		10-24 x 1/2 PTHMS	2
				F172		1/4-20 x 3/4 Carriage Bolt	2
				F223		3/16 x 5/16 Semi-Tube Rivet	4
				F411		3/16 Bulbex Rivet	12
				F420		5/16-18 x 1-1/4 Carriage Bolt	2
				F426		1/4-20 x 1/2 Carriage Bolt	2
				F462		3/16 x .468 (+/- .010) Semi-Tube Rivet	4
				F569		1/4-20 Flange Top Lock Nut	13
				F577		10-24 x 5/8 Carriage Bolt	2
				F638		1/4-20 x 1 Carriage Bolt	2
Blower Assembly							
10	6349-8	Flanged Bearing (1")	1				
11	4349-14	Flanged Bearing (1") Machine Flat	1				
12	5526-9	Receiver Cone	1				
13	7275-3	U-Joint Tube, Splined	1				
14	5794-3	Discharge Chute With Spring Mount (Includes Items # 15-17, 19, F002, F087, F129, F223 & F462)	1				
15	5755-2	Chute Lip, Top	1				
16	5755-3	Chute Lip, Bottom	1				
17	5726	Chute Hinge (2 x 8)	1				
18	8677	Extension Spring (1 x 6-1/16)	1				
19	8678-4	Spring Mount, Chute	1				
20	5794-5	Fixed Chute	1				
21	6543-12	Blower Faceplate Ring	3				
22	6543-11	Blower	1				
23	6545-12	Blower Wheel	1				
24	6545-8	Blower Spacer	1				

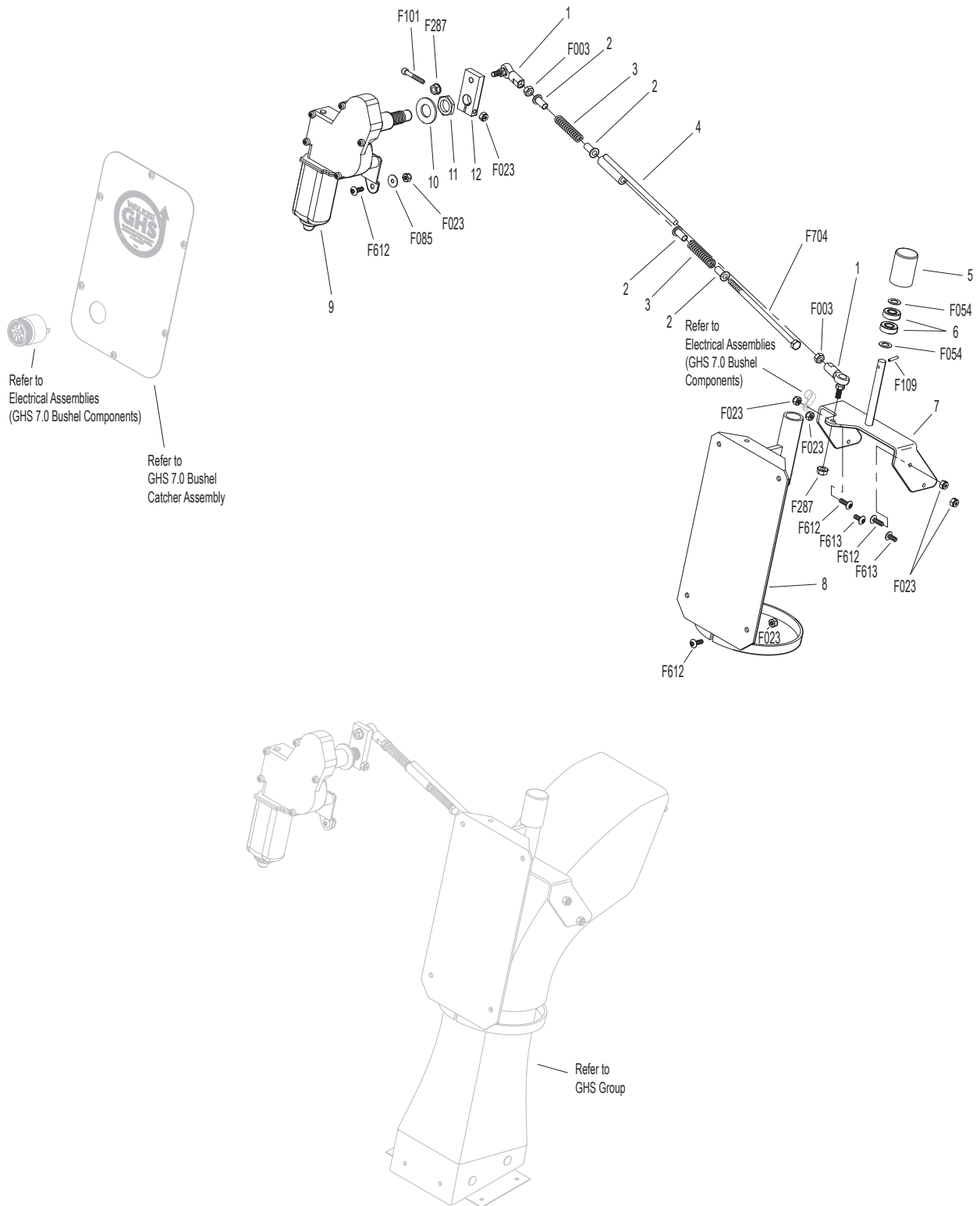
GHS GROUP



GHS POWERFIL® ASSEMBLY (7.0)

ITEM NO.	PART NO.	DESCRIPTION	NO. REQ'D	ITEM NO.	PART NO.	DESCRIPTION	NO. REQ'D
7.0 GHS Powerfil® Assembly				Fasteners			
1	5552	Ball Joint (1/4-28)	2	F003		1/4-28 Hex Nut	2
2	5553-3	Bushing, Powerfil® Actuator	4	F023		10-24 ESNA Nut	10
3	5553-1	Compression Spring (1/2 x 2)	2	F054		AN960616 Washer	2
4	5558-2	Powerfil® Actuator Rod	1	F085		3/16 Rivet Backup Washer	1
	5549	Actuator Rod Assembly (Includes Items # 1-4, F003, F287 & F704)	*	F101		10-24 x 1-1/4 SHC Screw	1
5	5551-3	Bearing Cap, Powerfil®	1	F109		1/8 x 5/8 Roll Pin	1
6	5551-1	Pivot Bearing (#S3PP)	2	F287		1/4-28 Keps Nut	2
7	5518-6	Pivot, Delivery Spout	1	F612		10-24 x 5/8 Truss Head Torx	7
8	5517-2	Pivot Mount	1	F613		10-24 x 1/2 Truss Head Torx	2
9	5519-5	Actuator Motor (12V) (Includes Items # 10 & 11)	1	F704		1/4-28 x 6-1/2 Hex Bolt Grade 5, Clear Zinc	1
10	5519-2	Motor Mount Washer	*	* Service Part Only			
11	5519-3	Motor Mount Nut (5/8-24)	*				
12	5554	Actuator Arm	1				

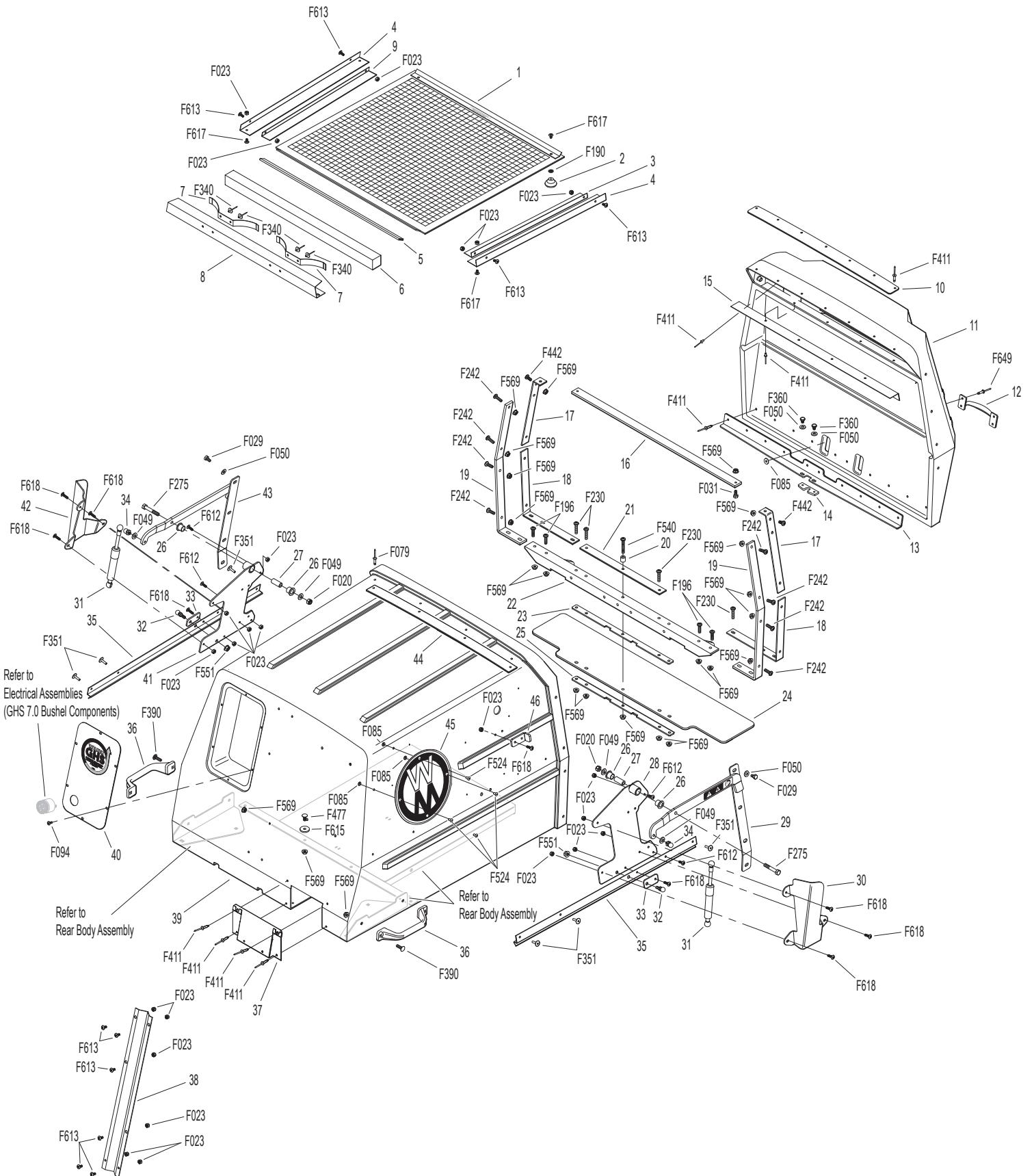
GHS POWERFIL® ASSEMBLY (7.0)



GHS 7.0 BUSHEL CATCHER ASSEMBLY

ITEM NO.	PART NO.	DESCRIPTION	NO. REQ'D	ITEM NO.	PART NO.	DESCRIPTION	NO. REQ'D
Upper Baffle Screen Assembly (Removable)				40	7607-8	Powerfil® Cover Plate	1
1	7512-12	Removable Screen (3/16 Hole) (Includes Items # 2, F190 & F617)	1**	41	7608-4	Hinge Plate, RH	1
2	7506	Knob / Threaded Insert (10-24)	2	42	8155-8	7.0 Gas Spring Cover, RH	1
3	7509-7	Channel Top, LH	1	43	7607-14	Catcher Door Arm, RH	1
4	8606-2	Channel Bottom	2	44	7584-3	Reinforcing Strap	1
5	6856-1	Edge Molding (21-3/4")	1	45	5801-4	Decal Plate, Round	2
6	6507	Screen Seal (23-1/4")	1	46	7608-5	Door Arm Stop	2
7	7505	Mustache Spring	2	5598-2 Optional Dump Bag (Not Shown)			
8	7509-6	C-Channel With Spring (Includes Items # 7 & F340)	1	May be ordered as an option. Contact your Walker dealer.			
9	7509-8	Channel Top, RH	1	Fasteners			
7.0 Exhaust Deflector Door Assembly				F020		5/16-18 ESNA Nut	2
10	7607-3	Upper Door Seal	1	F023		10-24 ESNA Nut	28
11	7510-4	7.0 Catcher Box Door (Includes Frame) (Includes Items # 10, 12, 13, 15, F085, F411 & F649)	1	F029		1/4-20 x 1/2 Hex Bolt	2
12	5583	Handle	1	F031		1/4-20 x 5/8 Hex Bolt	2
13	7607-6	Lower Door Stiffener (7.0)	1	F049		5/16 SAE Washer	4
14	8607-8	Door Guide	1	F050		1/4 SAE Washer	4
15	7607-5	Upper Door Stiffener	1	F079		A/A66D Aluminum Pop Rivet	4
GHS 7.0 Bushel Catcher Assembly				F085		3/16 Rivet Backup Washer	12
16	7503-8	Center Strap (7.0)	1	F094		8-32 x 1/2 PTHMS	6
17	7503-6	Upper Frame Doubler (7.0)	2	F190		#10 Internal Star Lock Washer	2
18	7503-5	Lower Frame Doubler (7.0)	2	F196		1/4-20 x 1 PPHMS, SS	4
19	7503-4	Outside Box Strap (7.0)	2	F230		1/4-20 x 1-1/4 PPHMS, SS	4
20	8608-11	Catcher Door Finger	1	F242		1/4-20 x 7/8 PPHMS, SS	8
21	8608-4	Center Frame Doubler	1	F275		5/16-18 x 2 Hex Bolt	2
22	7503-11	Catcher Mount	1	F340		Rivet, Aluminum	4
23	7610-4	Catcher Dump Flap Spacer (7.0)	1	F351		Aluminum Pop Rivet	6
24	7610-9	Catcher Dump Flap (7.0)	1	F360		1/4-20 x 3/8 Hex Bolt	2
25	8610-3	Backing Plate / Dump Flap	1	F390		1/4-20 x 7/8 Carriage Bolt	4
26	7620-3	Pivot Bushing (1/2 x 9/16)	4	F411		3/16 Bulbex Rivet	32
27	7607-7	Bushing	2	F442		1/4-20 x 5/8 PTHMS	2
28	7608-3	Hinge Plate, LH	1	F477		1/4-20 x 5/8 Carriage Bolt	4
29	7607-15	Catcher Door Arm, LH	1	F524		3/16 x 3/8 Aluminum Rivet, Black	8
30	8155-7	7.0 Gas Spring Cover, LH	1	F540		1/4-20 x 1-3/4 PPHMS, SS	1
31	5155-5	Gas Spring	2	F551		5/16-18 Flange Top Lock Nut	2
32	5155-13	3/4 Ball Stud	2	F569		1/4-20 Flange Top Lock Nut	29
33	5523-6	Gas Spring Plate	2	F612		10-24 x 5/8 Truss Head Torx	4
34	5155-12	5/16 Ball Stud	2	F613		10-24 x 1/2 Truss Head Torx	10
35	5155-15	Box Support, Gas Spring	2	F615		1.0 x .255 x .125 Washer	4
36	7532-1	Handle, Catcher Lift	2	F617		10-24 x 3/8 Truss Head Torx	4
37	7511-6	Chute Cover	1	F618		10-24 x 3/4 Truss Head Torx	12
38	7557-1	7.0 Wire Harness Channel	1	F649		3/16 x .510/.625 Grip Range Rivet, SS	4
39	7510-3	7.0 Bushel Catcher Box	1	* Service Part Only			
	7502-6	7.0 Catcher W/Powerfil® (Includes Door)	*				

GHS 7.0 BUSHEL CATCHER ASSEMBLY

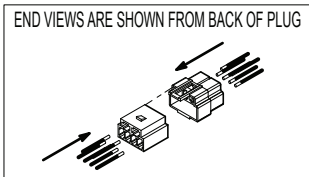
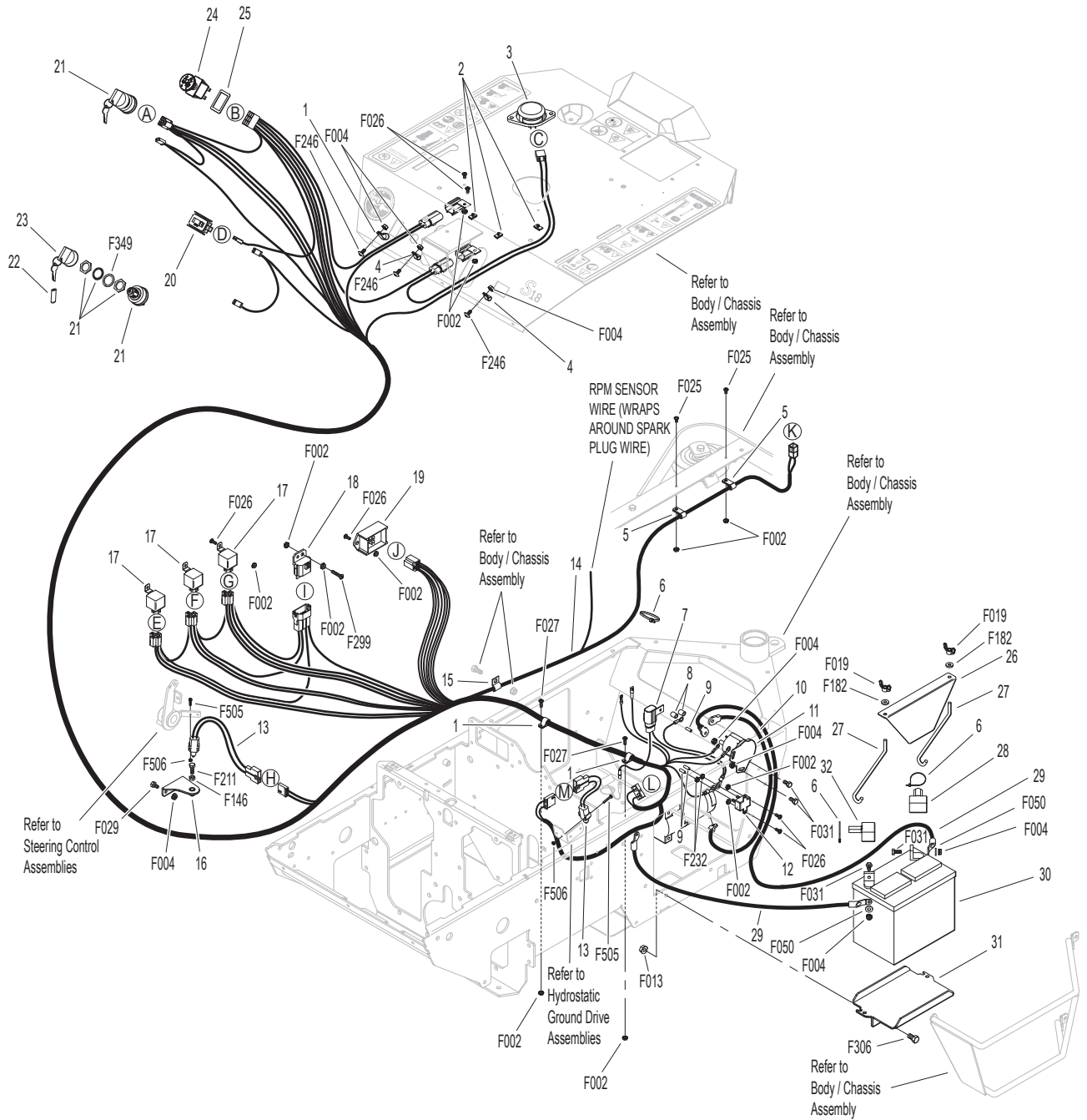


Model S18 Beginning S/N 181152
 Use only genuine **Walker®** replacement parts.

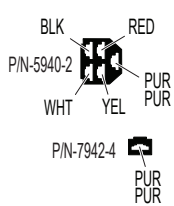
ELECTRICAL ASSEMBLY

ITEM NO.	PART NO.	DESCRIPTION	NO. REQ'D	ITEM NO.	PART NO.	DESCRIPTION	NO. REQ'D
Electrical Assembly				Fasteners			
1	6833	Cable Clamp (9/16 x #10)	3	F002		10-24 Keps Nut	15
2	7834-3	Wire Saddle (3 Wires)	3	F004		1/4-20 Keps Nut	9
3	5103-12	Seat Switch	1	F013		3/8-16 Whiz Locknut	2
4	5835-1	Clamp Half (1/4)	2	F019		1/4-20 ESNA Wing Nut	2
5	5832	Cable Clamp (1/2)	2	F025		10-24 x 3/8 PPHMS	2
6	5975-1	Cable Tie (18# x 3-3/4")	3	F026		10-24 x 1/2 PPHMS	9
7	4940-15	30A Fuse, Jumper Wire Assembly	1	F027		10-24 x 5/8 PPHMS	2
8	6681-23	Plastic Cap, Black	2	F029		1/4-20 x 1/2 Hex Bolt	2
9	8404-8	Plastic Cover, Red	3	F031		1/4-20 x 5/8 Hex Bolt	4
10	6922	Battery Cable (+)	1	F050		1/4 SAE Washer	2
11	4929	Starter Solenoid	1	F146		1/4-20 Jam Nut	1
12	8941	Circuit Breaker (30 Amp) (Auto Reset/Sealed)	1	F182		1/4 x 5/8 x 1/8 Washer	2
13	5942-8	Safety Switch (NO), Delta Side Mount	2	F211		1/4-20 x 7/8 Hex Bolt	1
14	5943-11	Wire Harness Assembly	1	F232		10-32 Keps Nut	2
15	5835-4	Cable Clamp (1/2) .343 Hole	1	F246		1/4-20 x 1/2 PTHMS	3
16	4024-13	Safety Switch Plate	1	F299		10-24 x 1 PPHMS	1
17	6941-9	Relay Switch 30/40 Amp	3	F306		3/8-16 x 3/4 Hex Bolt	2
18	7948-6	Time Delay Module	1	F349		Washer .835 ID 1.122 OD, SS	1
19	4410-16	Soft Start Control	1	F505		6-32 x 7/8 Hex Trim MS, SS	4
20	8990-1	Hourmeter (Global)	1	F506		6-32 Nylock Nut	4
21	8960-15	Ignition Switch (With Keys) (Includes Items # 22, 23 & F349)	1	* PTO switch spacer (P/N 4950-11) replaces PTO switch spacer (P/N 4950-10). The 4950-10 spacer was located on the outside of the tractor and made of foam. The 4950-11 spacer is made of metal and located on the inside of the tractor body. Do not use both together.			
22	7854	Plastic Tip / Red	1				
23	8960-3	Key Set W/Umbrella	1				
24	4950	PTO Switch	1				
25	4950-11	PTO Switch Spacer	1*				
Battery Assembly				NOTE: Decals for this assembly are not shown here. Refer to TRACTOR DECALS , Page 2, for Decal listing and placement information.			
26	5844-3	Battery Hold-Down Bar	1				
27	5839	Hook Bolt	2				
28	5933	Battery Terminal Insul., Red (+)	1				
29	4940-8	Starter Solenoid Cable	2				
30	NS	Battery (12V/300 CCA/Wet/SP-35)	1				
31	6390-3	Battery Pan	1				
32	5932	Battery Terminal Insul., Black (-)	1				

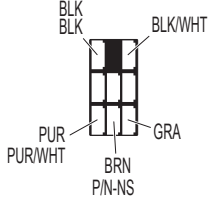
ELECTRICAL ASSEMBLY



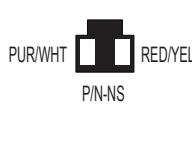
DETAIL A



DETAIL B



DETAIL C



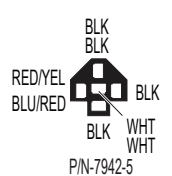
DETAIL D



DETAIL E



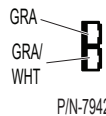
DETAIL F



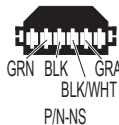
DETAIL G



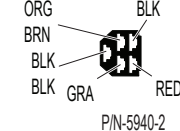
DETAIL H



DETAIL I



DETAIL J



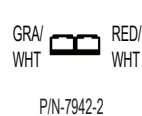
DETAIL K



DETAIL L



DETAIL M

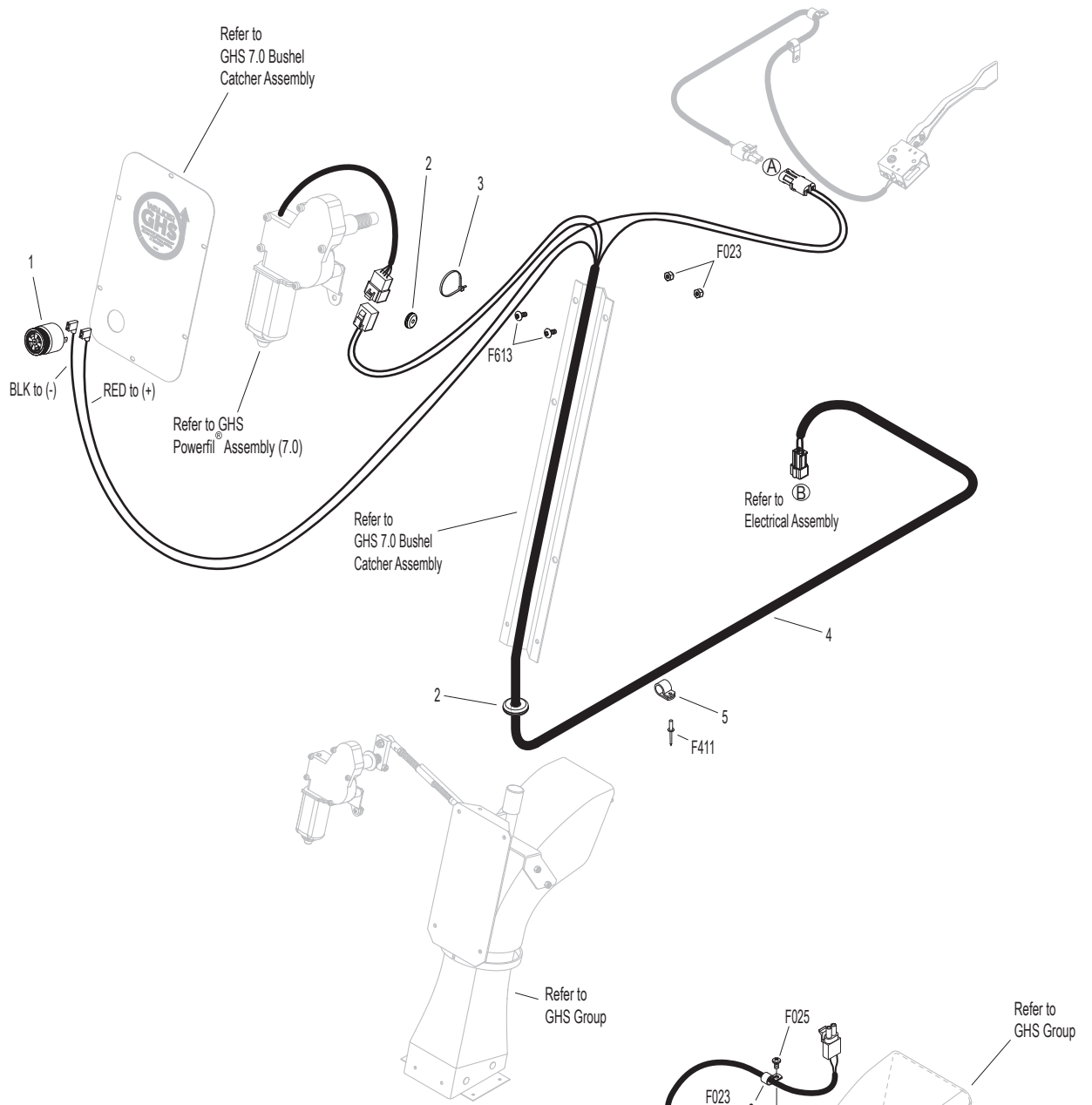


Model S18 Beginning S/N 181152
Use only genuine **Walker**® replacement parts.

ELECTRICAL ASSEMBLIES (GHS 7.0 BUSHEL COMPONENTS)

ITEM NO.	PART NO.	DESCRIPTION	NO. REQ'D	ITEM NO.	PART NO.	DESCRIPTION	NO. REQ'D
Horn & Harness Channel Assemblies				Fasteners			
1	5536-2	Horn, Full Signal	*	F002		10-24 Keps Nut	1
2	5976-2	Grommet (3/16 x 3/4)	2	F023		10-24 ESNA Nut	3
3	5975-1	Cable Tie (18# x 3-3/4")	1	F025		10-24 x 3/8 PPHMS	1
Harness & Grass-Pak® Switch Assemblies				F411		3/16 Bulbex Rivet	1
4	8950-4	Powerfil Wire Harness (7.0/10.0)	1	F508		4-40 Keps Nut, SS	2
5	7834	Nylon Clamp (1/4)	1	F612		10-24 x 5/8 Truss Head Torx	1
6	5833	Cable Clamp (1/4)	2	F613		10-24 x 1/2 Truss Head Torx	2
7	5594-7	Grass-Pak® Vane	1	F712		4-40 x 3/8 Hex Head, SS	2
8	5592-20	Grass-Pak® Switch Assembly	1	F713		Washer #4, SS	2
				*		Service Part Only	

ELECTRICAL ASSEMBLIES (GHS 7.0 BUSHEL COMPONENTS)



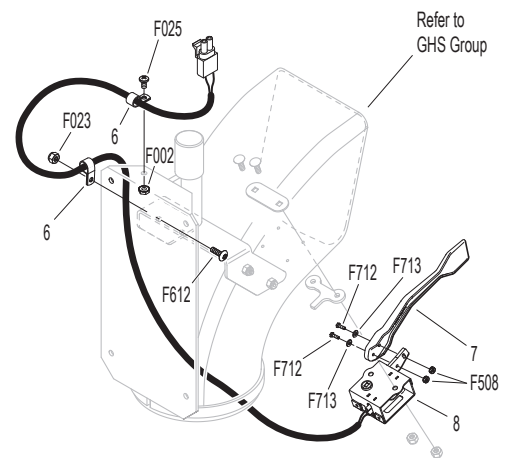
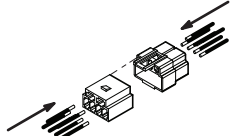
DETAIL A



DETAIL B



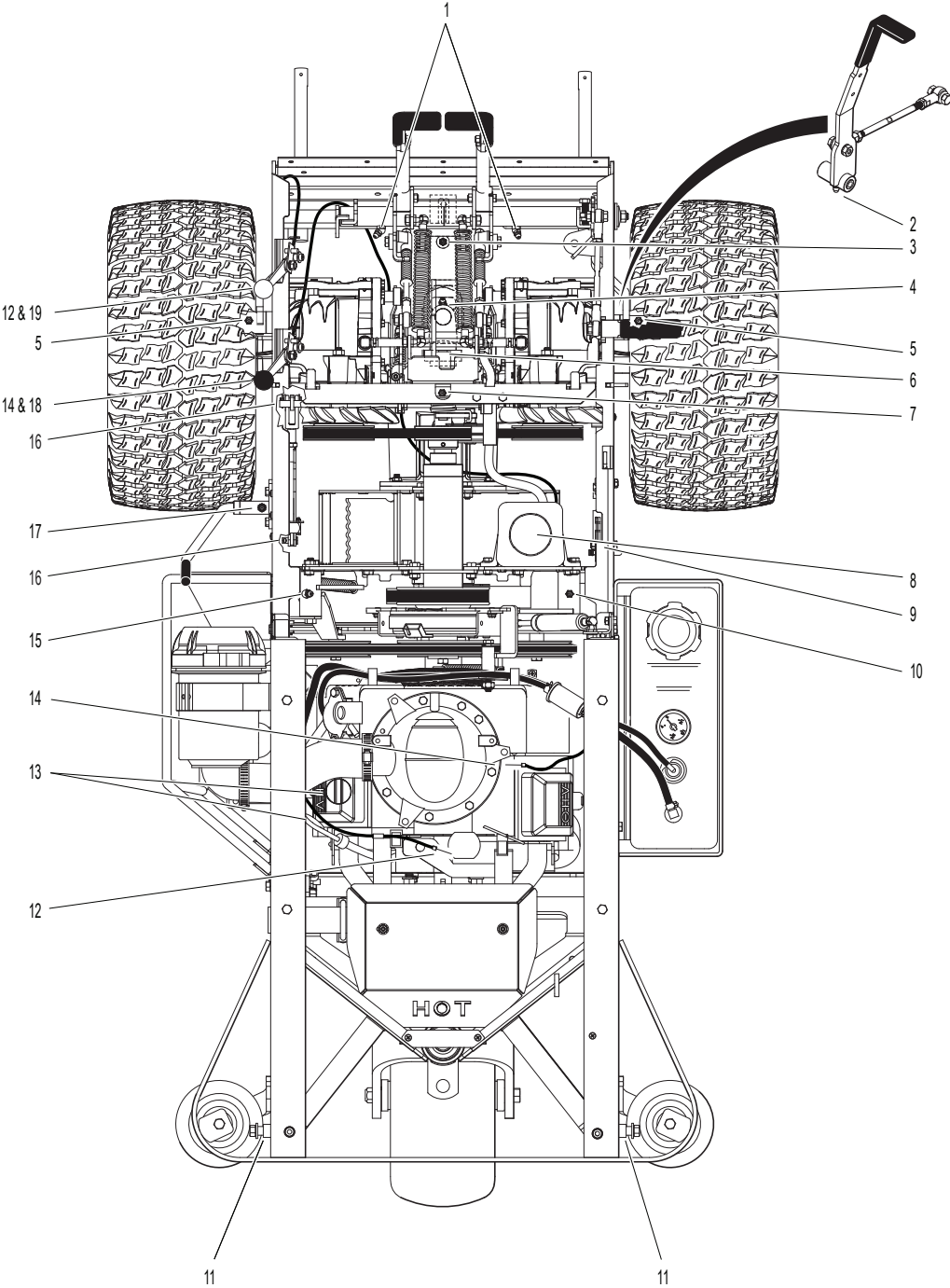
END VIEWS ARE SHOWN FROM BACK OF PLUG



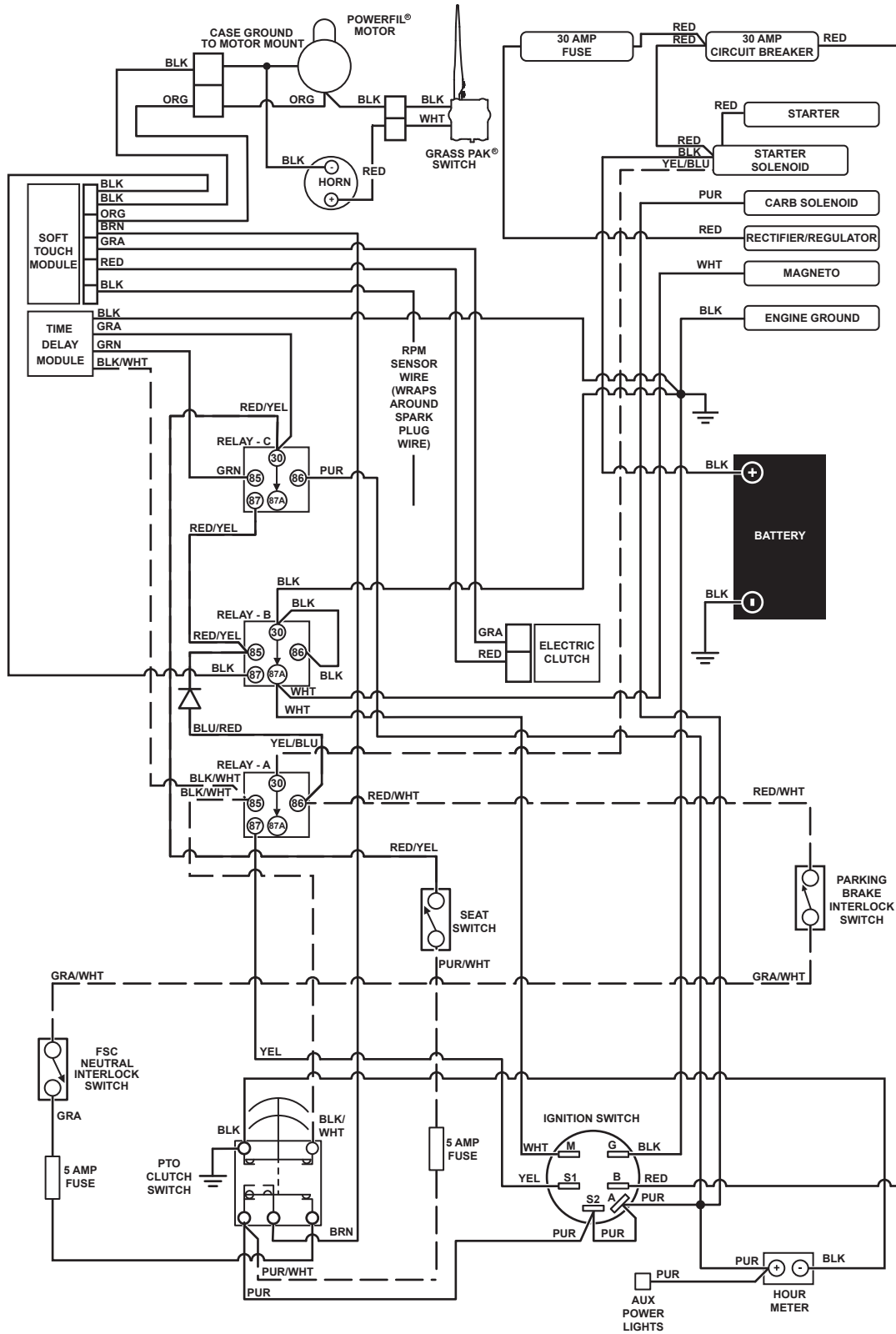
LUBRICATION POINTS

ITEM NO.	LOCATION	LUBRICATION TYPE	NO. PLACES	ITEM NO.	LOCATION	LUBRICATION TYPE	NO. PLACES
Lubrication Points				13	Engine Dipstick / Oil Fill	Oil**	1
1	Steering Lever Pivot	Grease	2	14	Choke Control Cable Ends	Oil	2
2	FSC Lever Pivot	Grease	1	15	Engine Idler Pivot	Grease	1
3	Deck-to-PTO Coupling (Grease Spline Slide Area)	Grease	1	16	Parking Brake Clevis	Oil	2
4	Universal Joint Tube Assembly	Grease*	1	17	Parking Brake Lever Pivot	Grease	1
5	Deck Support Arm Pivot	Grease	2	18	Choke Control Pivot	Oil	1
6	Universal Joint Quick Connect Spline (Grease Slide Area)	Grease	1	19	Throttle Control Pivot	Oil	1
7	Ground Drive Idler Pivot	Grease	1	* Grease every 25 hours.			
8	Transaxle Oil Reservoir	Oil/20W-50	1	** Refer to S18 Operator's Manual for procedure for checking and changing oil in Engine Crankcase.			
9	Body Latch Pivot	Oil	1	NOTE: See Model S18 Operator's Manual (5000-80) for proper lubrication intervals.			
10	PTO Belt Tightener Idler Pivot	Grease	1				
11	Catcher Hinge Point	Oil	2				
12	Throttle Control Cable Ends	Oil	2				

LUBRICATION POINTS



WIRING SCHEMATIC



WALKER MODEL S18 Beginning S/N 2023-178948

IGNITION SWITCH CIRCUITS	
OFF	G + M
START	B + A / S1 + S2
RUN	B + A

S1 = START CIRCUIT
 S2 = START/ACCESSORY CIRCUIT
 M = MAGNETO GROUND CIRCUIT
 B = BATTERY CIRCUIT
 A = ACCESSORY CIRCUIT
 G = GROUND CIRCUIT

PTO CLUTCH SWITCH	
OFF-PUSH	PUR + GRA BLK+BLK/WHT
ON-PULL	PUR+BRN

RELAY - A	
START RELAY	
OFF	30 + 87A
START	30 + 87
RUN	30 + 87
PTO ON	30 + 87A

RELAY - B	
IGNITION RELAY	
OFF	30 + 87A
START	30 + 87
RUN	30 + 87

RELAY - C	
DELAY RELAY	
OFF	30 + 87A
START	30 + 87
RUN	30 + 87

LIMITED WARRANTY FOR WALKER MODEL S18 RIDER MOWER

1. WHAT THIS WARRANTY COVERS, AND FOR HOW LONG:

Walker Manufacturing company will, at its option, repair or replace, without charge, any part covered by this warranty which is found to be defective in material and/or workmanship within two (2) years* after the date of sale to the original retail purchaser unless the product is used for rental purposes, in which case this warranty is limited to ninety (90) days. At Walker's request, customer will make the defective part available for inspection by Walker and/or return the defective part to Walker, transportation charges prepaid. All parts and components of the Walker Mower are covered by this warranty **except** the following components which are warranted separately by their respective manufacturers:

Briggs & Stratton Engine

Battery

The available warranties covering these items are furnished with each mower. Walker does not assume any warranty obligation, liability or modification for these items, which are covered exclusively by the stated warranty of the respective manufacturers noted above.

- A two (2) year or 2000 hour (whichever comes first) warranty is offered for Hydro-Gear ZT3100 hydrostatic transmissions; covers full cost of replacement up to 1000 hours of use, and after 1000 hours warranty coverage is prorated against 2000 hours.

2. WHAT THIS WARRANTY DOES NOT COVER:

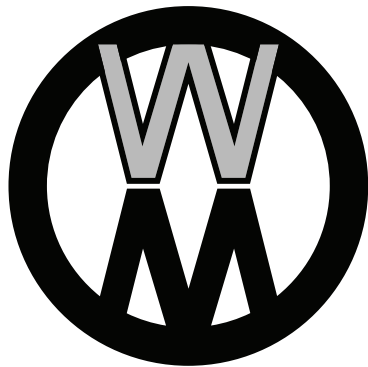
- A. This warranty does not cover defects caused by depreciation or damage caused by normal wear, accidents, improper maintenance, improper use or abuse of the product, alterations, or failure to follow the instructions contained in the Operator's Manual for operation and maintenance.
- B. The customer shall pay any charges for making service calls and/or for transporting the mower to and from the place where the inspection and/or warranty work is performed.

3. HOW TO OBTAIN SERVICE UNDER THIS WARRANTY:

Warranty service can be arranged by contacting the dealer where you purchased the mower or by contacting Walker Manufacturing Company, 5925 East Harmony Road, Ft. Collins, CO 80528. Proof of the date of purchase may be required to verify warranty coverage.

4. WARRANTY LIMITATION:

- A. **THERE IS NO OTHER EXPRESS WARRANTY. ANY WARRANTY THAT MAY BE IMPLIED FROM THIS PURCHASE INCLUDING MERCHANTABILITY AND FITNESS FOR A PARTICULAR PURPOSE IS HEREBY LIMITED TO THE DURATION OF THIS WARRANTY AND TO THE EXTENT PERMITTED BY LAW ANY AND ALL IMPLIED WARRANTIES ARE EXCLUDED.** Some states do not allow limitations on how long an implied warranty lasts, so the above limitations may not apply to you.
- B. **WALKER WILL NOT BE LIABLE FOR ANY INCIDENTAL, CONSEQUENTIAL, OR SPECIAL DAMAGES AND/OR EXPENSES IN CONNECTION WITH THE PURCHASE OR USE OF THE MOWER.** Some states do not allow the exclusion or limitation of incidental or consequential damages, so the above limitation(s) or exclusion(s) may not apply to you.
- C. Only the warranty expressed in this limited warranty shall apply and no dealer, distributor, or individual is authorized to amend, modify, or extend this warranty in any way. Accordingly, additional statements such as dealer advertising or presentations, whether oral or written, do not constitute warranties by Walker, and should not be relied upon.
- D. This warranty gives you specific legal rights, and you may also have other rights which vary from state to state.



WALKER

WALKER MFG. CO. • 5925 E. HARMONY ROAD, FORT COLLINS, CO 80528 • (970) 221-5614
FORM NO. 042224 PRINTED IN USA www.walker.com ©2024 WALKER MFG. CO