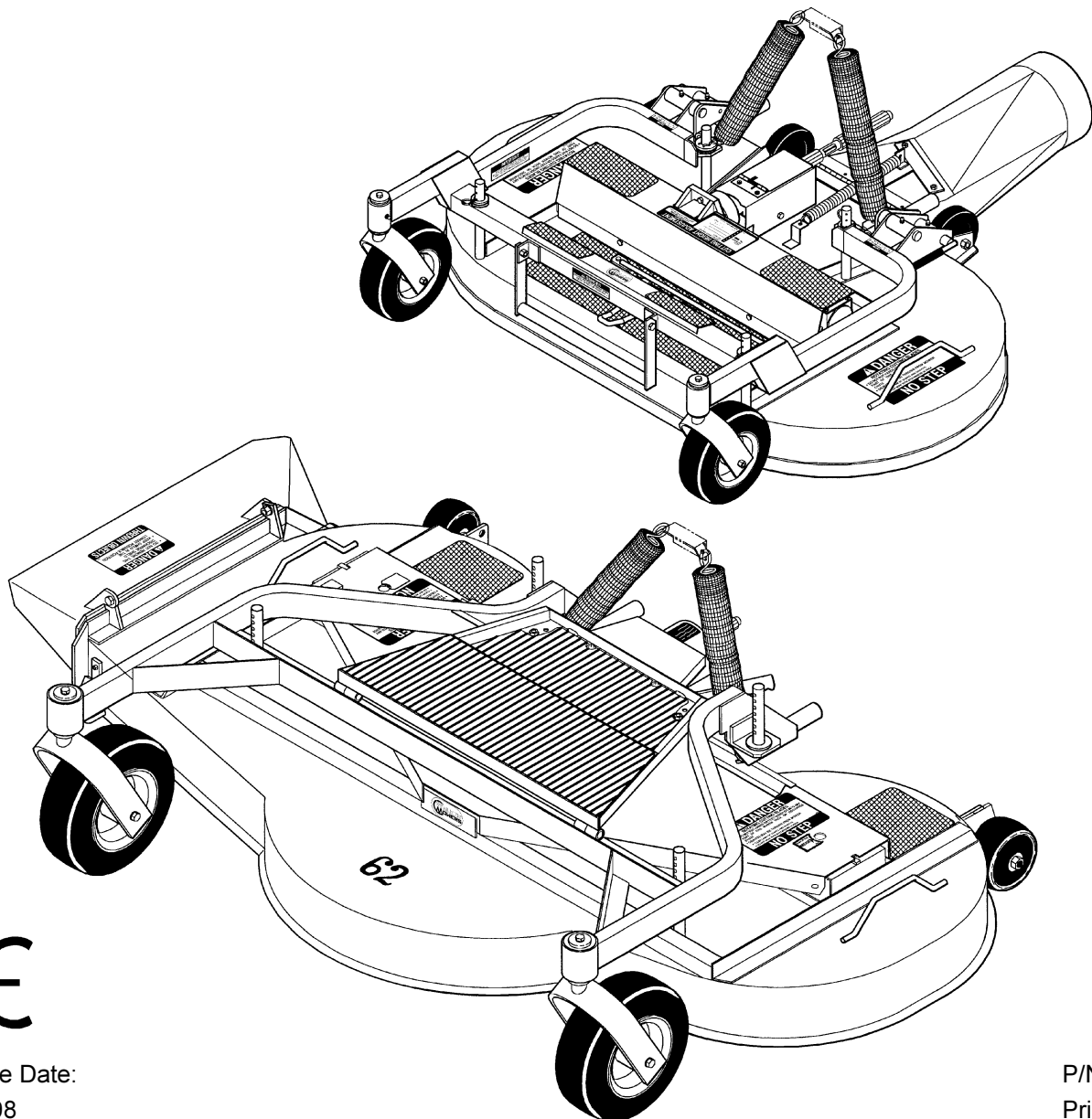


Walker Rider Lawnmowers

ILLUSTRATED PARTS MANUAL

Deck and Carrier Frame Assemblies (36", 42", 48", 52", 54" & 62")
(Covers Serial Numbers DX-46813 and on)



CE

Effective Date:
07-24-98

P/N 5000-6
Price \$5.00

KEY TO ABBREVIATIONS USED IN THIS MANUAL

<i>Abbreviation</i>	<i>What it Represents</i>
AT	All-Terrain
CCW	Counter-clockwise
Conn.	Connector
CW	Clockwise
DGHS	Deck, Grass Handling System (number refers to size in inches)
DML	Deck, Mulching (number refers to size in inches)
DSD	Deck, Side Discharge (number refers to size in inches)
ESNA (Fastener)	Nylon Insert Locknut
FSC	Forward Speed Control
GA	Gauge
gal.	gallon
GHS	Grass Handling System
GR (Fastener)	Grade
ID	Inside Diameter
" or in. (Dimension)	inches
LH	Left Hand (orientated with operator on seat)
mm (Dimension)	millimeters
MS (Fastener)	Machine Screw
NPT	National Pipe Thread
NS (as part number)	Item is not sold by Walker Manufacturing
OAL	Overall Length
OD	Outside Diameter
oz.	ounce
PFHMS (Fastener)	Phillips Flat Head Machine Screw
P/N	Part Number
PPHMS (Fastener)	Phillips Pan Head Machine Screw
PPHSM (Fastener)	Phillips Pan Head Sheet Metal (Screw)
PPHST (Fastener)	Phillips Pan Head Self-Tapping (Screw)
PTHMS (Fastener)	Phillips Truss Head Machine Screw
PTO	Power Take-Off
QKS	Quick Slide
qt.	quart
RH	Right Hand (orientated with operator on seat)
SAE (Fastener)	Society of Automotive Engineers
SBH (Fastener)	Socket Button Head (Bolt)
SD	Side Discharge
SFH (Fastener)	Slotted Flat Head
SHC (Fastener)	Socket Head Cap
SHL (Fastener)	Shoulder (Bolt)
S/N	Serial Number
Spg.	Spring
SQH (Fastener)	Square Head
SS (Fastener)	Stainless Steel
Term.	Terminal

Use only genuine **Walker** replacement parts.

Effective Date 07-24-98

ILLUSTRATED PARTS LIST

<i>Section of Mower Covered</i>	<i>Page</i>	<i>Section of Mower Covered</i>	<i>Page</i>
Decals & Paint			
Deck Decals & Walker Touch-Up Paint.....	2	8691 Mulching Kit (For DSD52)	26
Deck and Carrier Frame Assemblies		54 Inch Complete Carrier Frame Assembly	28
36 Inch Complete Carrier Frame Assembly	4	DSD54 Deck Assembly	30
DGHS36 Deck Assembly	6	62 Inch Complete Carrier Frame Assembly	32
DSD36 Deck Assembly	8	DSD62 Deck Assembly	34
42 Inch Complete Carrier Frame Assembly	10	Deck Weldment Replacement Parts	36
DGHS42 Deck Assembly	12	Maintenance	
DSD42 Deck Assembly	14	Lubrication Points	38
DML42 Deck Assembly	16	Operator's Notes	40
48 Inch Complete Carrier Frame Assembly	18	Warranty	
DGHS48 Deck Assembly	20	Limited Warranty	41
52 Inch Complete Carrier Frame Assembly	22		
DSD52 Deck Assembly	24		

DECK DECALS & WALKER TOUCH-UP PAINT

ITEM NO.	PART NO.	DESCRIPTION	LOCATION	NO. REQ'D. GHS	NO. REQ'D SD
DSD52 Decals					
1	5848	Danger, Side Discharge Shield	Side Discharge Shield	0	1
2	5808-1	Danger, Rotating Blades	Deck Housing (one on each end)	0	2
3	5846	Grease Fitting	Deck Cover Plate	0	3
4	8734	Drive Belt Routing (52" Deck)	Underneath Deck Cover Plate	0	1
5	5809	Walker Mower Logo (3")	Deck Housing, Front	0	1
6	8732	52" Deck	Deck Housing, Front	0	1
7	8748	Cutting Height Adjustment	Deck Cover Plate	0	1
8	8746	Universal Joint Lube	Mount Bracket/PTO Guard	0	1
9	6875	PTO Alignment Arrow	Universal Joint Shaft Assembly	0	1

DSD62 Decals

1	5848	Danger, Side Discharge Shield	Side Discharge Shield	0	1
3	5846	Grease Fitting	Deck Cover Plate	0	3
5	5809	Walker Mower Logo (3")	Deck Housing, Front	0	1
7	8748	Cutting Height Adjustment	Deck Cover Plate	0	1
8	8746	Universal Joint Lube	Mount Bracket/PTO Guard	0	1
9	6875	PTO Alignment Arrow	Universal Joint Shaft Assembly	0	1
10	5808	Danger, Rotating Blades	Deck Cover Plate (one on each end)	0	2
11	8749	Drive Belt Routing (62" Deck)	Underneath Deck Cover Plate	0	1
12	8750	62" Deck	Deck Housing, Front	0	1

GHS, SD & Mulching Decks (36", 42", 48" & 54" Tilt-Up)

1	5848	Danger, Side Discharge Shield	Side Discharge Shield	0	1
5	5809	Walker Mower Logo (3")	36", 42", 48" & 54" Carrier Frame, Front	1	1
9	6875	PTO Alignment Arrow	Universal Joint Shaft Assembly	1	1
10	5808	Danger, Rotating Blades	Deck Housing (one on each end)	2	2
13	8653	Caution, Pivot Joint	36", 42", 48" & 54" Carrier Frame	2	2
14	5807-1	Cutting Height Adjustment	Gearbox Cover	1	1
15	8647	Danger, Tilt-Up	36", 42", 48" & 54" Carrier Frame	1	1
16	5865	Blade Mounting Torque	36", 42", 48" & 54" Carrier Frame	1	1

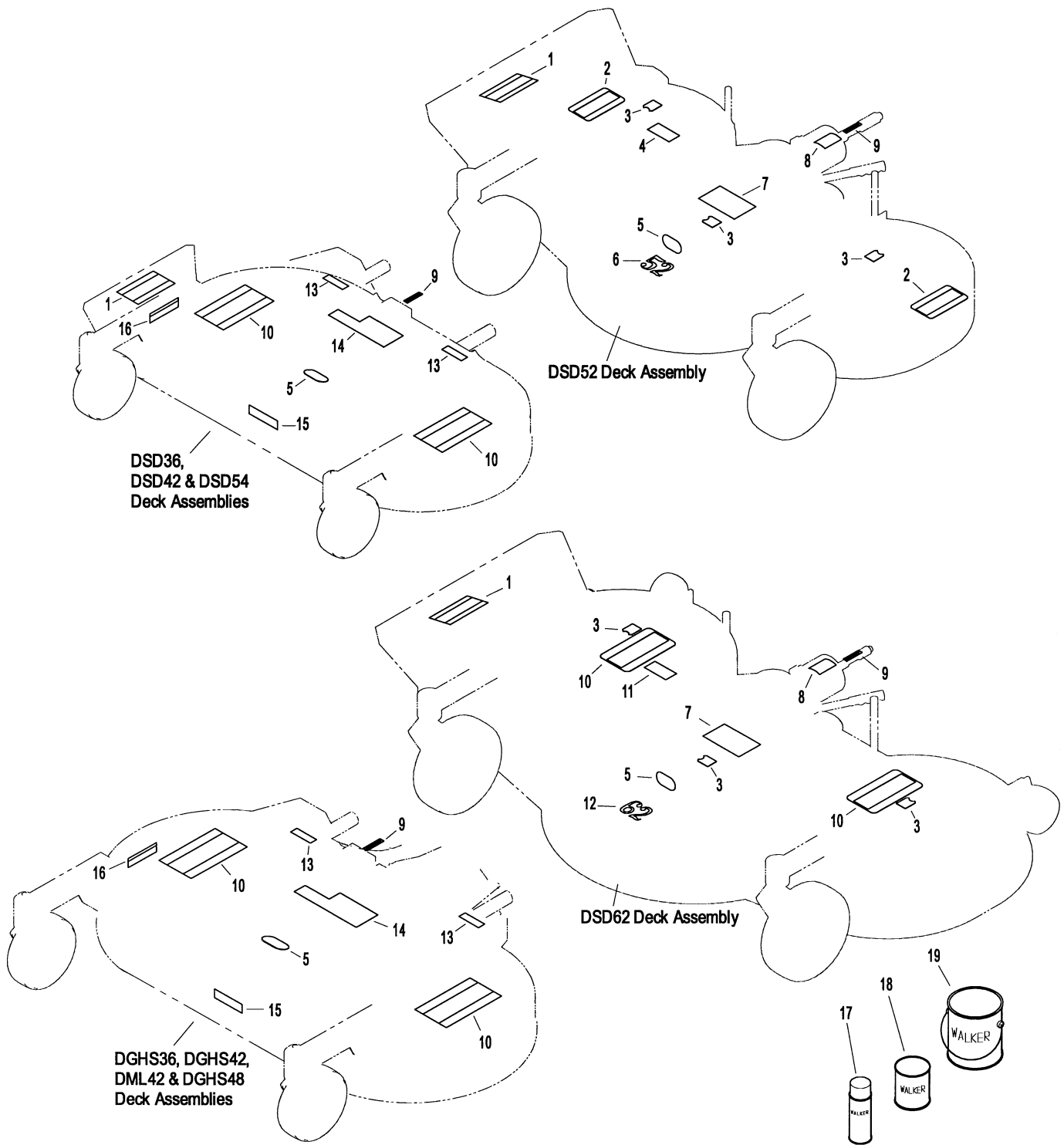
Walker Touch-Up Paint*

17	5866	Touch-Up Paint, Yellow (12 oz. Aerosol)			
18	5871	Touch-Up Paint, Yellow (1 qt.)			
19	5871-1	Touch-Up Paint, Yellow (1 gal.)			

* Service Part Only, Walker Touch-Up Paint is not included with any replacement parts or kits and must be ordered separately.

NOTE: All parts requiring decals are shipped with decals applied.

DECK DECALS & WALKER TOUCH-UP PAINT



36 INCH COMPLETE CARRIER FRAME ASSEMBLY (P/N 5710)

ITEM NO.	PART NO.	DESCRIPTION	NO. REQ'D	ITEM NO.	PART NO.	DESCRIPTION	NO. REQ'D
36 Inch Complete Carrier Frame Assembly (May Be Used On All Models)				Fasteners			
1	5744-1	Spring Clip Bracket	1	F012	3/8-16 Keps Nut		2
2	5975-3	Cable Tie (50# x 7")	4	F014	3/8-16 ESNA Nut		2
3	5743-1	Spring Cover	2	F020	5/16-18 ESNA Nut		2
4	5743-2	Extension Spring (1-7/16 x 7-13/16)	2	F038	3/8-16 x 1 Hex Bolt		2
5	5743-3	Eyebolt (3/8-16 x 2)	2	F047	3/8-16 x 4-1/2 Hex Bolt		2
6	8667-20	Pivot Mount, RH	1	F051	3/8 SAE Washer		1
7	5830-3	Grease Fitting (45 Degree)	4	F054	AN960616 Washer		1
8	8667-10	Pivot Mount, LH	1	F063	3/8 Internal Star Lock Washer		2
9	8674-11	Lever, Deck Lock, LH	1	F084	5/16 Wave Spring Washer		2
10	7406-1	Handle Grip (Red)	2	F111	1/8 x 3/4 Cotter Pin		1
11	7666	Hitch Pin (#3)	1	F123	1" External Snap Ring		4
12	5749-1	Deck Lift Rod (36")	1	F166	Retainer Ring		4
13	5748	Safety Tread (2 x 6)	2	F191	3/8 x 1-1/2 x 3/16 Washer		2
14	5682	Compression Spring (9/16 x 3/4)	1	F226	5/16-18 x 7/8 Hex Bolt		2
15	8669	Lift Handle	1	F317	3/16 x 1 Split Spring Pin		4
16	5714-7	Bearing Cap	4	F335	3/8-16 x 7/8 Set Screw, SS		2
17	5714-5	Bearing, Caster Wheel	2	F336	3/8-16 Jam Nut		2
18	5715-4	Caster Wheel Assy, Pneu. (8 x 3.00-4) (Includes Items # 7, 16 & 17)	2	* Service Part Only			
	5715-10	Tire, Pneumatic (8 x 3.00-4)	*	** May be ordered as a factory-installed option or as a kit for dealer installation. Contact your Walker dealer.			
	5715-9	Tire Tube, Pneumatic (2.80/2.50-4)	*				
	5715-3	Caster Wheel, Semi-Pneumatic (8.25 x 2.75)	**				
19	5714-3	Axle Spacer Tube	2	NOTE: Decals for this assembly are not shown here. Refer to DECK DECALS & WALKER TOUCH-UP PAINT (Page 2) for Decal listing and placement information.			
20	5770-2	Caster Wheel Fork	2				
21	5683	Pivot Bearing	4				
22	5830	Grease Fitting	2				
23	5740-2	Deck Pin Bushing (5/8 ID)	4				
24	5710-12	36" Carrier Frame (Includes Item # 13)	1				
	5710-10	36" Carrier Frame w/Pivots (Includes Items # 6, 8, 9, 24, 25, F317, F335 & F336)	*				
25	8674-10	Lever, Deck Lock, RH	1				



DGHS36 DECK ASSEMBLY (P/N 5710-15)

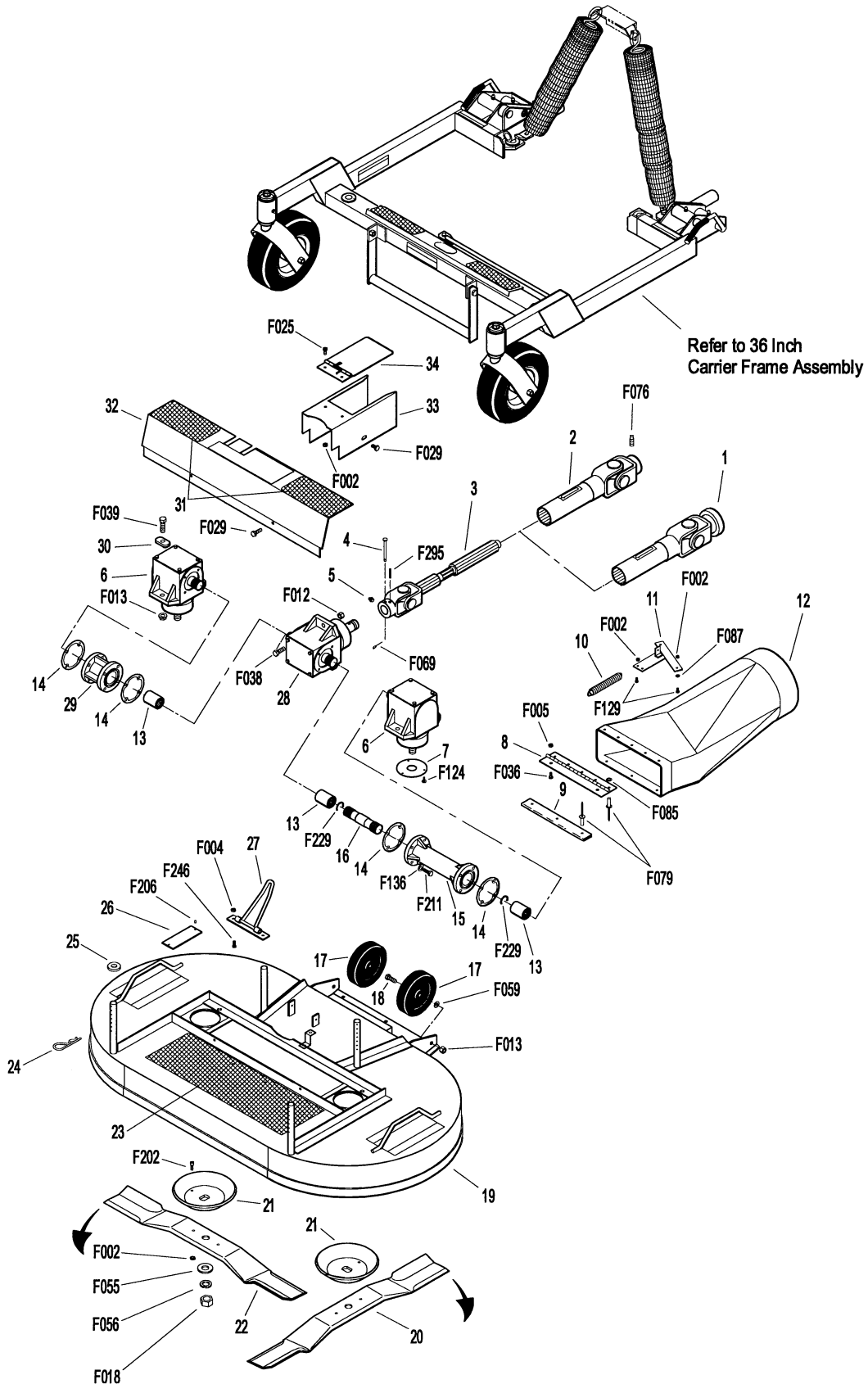
ITEM NO.	PART NO.	DESCRIPTION	NO. REQ'D	ITEM NO.	PART NO.	DESCRIPTION	NO. REQ'D
DGHS36 Deck Assembly (May Be Used On All GHS Models)				Fasteners			
1	7275-15	U-Joint Tube Assy, Spline	*	F002	10-24 Keps Nut		9
2	5275-15	U-Joint Tube Assy (9.5" OAL), Spline	**	F004	1/4-20 Keps Nut		2
3	5285-15	U-Joint Shaft Assy, 90 Degree, Spline (Includes Items # 4, 5 & F295)	1	F005	1/4-20 ESNA Nut		2
4	8067-10	Shear Pin w/Cotter (Set of 5) (Includes Item # F069)	***	F012	3/8-16 Keps Nut		1
5	5830	Grease Fitting	1	F013	3/8-16 Whiz Locknut		6
6	5052-1	Blade Drive Gearbox (LH Rotation)	2	F018	5/8-18 Hex Nut (Refer to Special Instructions , Item # 1)		2
7	5706-4	Seal Protector Plate	3	F025	10-24 x 3/8 PPHMS		2
8	5726	Chute Hinge (2 x 8)	1	F029	1/4-20 x 1/2 Hex Bolt		4
9	5755	Chute Lower Lip	1	F036	1/4-20 x 1/2 SBH Screw		2
10	8677	Extension Spring (1 x 6-1/16)	1	F038	3/8-16 x 1 Hex Bolt		1
11	8678	Spring Mount, Chute	1	F039	3/8-16 x 1-1/4 Hex Bolt		4
12	5797	Discharge Chute (6-1/2 Diameter)	1	F055	5/8 SAE Washer		2
	5794	Discharge Chute Assembly (Includes Items # 8, 9, 12, F079 & F085)	***	F056	5/8 Split Lock Washer		2
13	6054	Spline Coupling	3	F059	3/8 Wave Spring Washer		2
14	P007	Gasket, Cap (Peerless #788030)	4	F069	3/32 x 1/2 Cotter Pin		1
15	5061	Gearbox Connector Tube (6-11/16)	1	F076	3/8-16 x 5/8 SQH Set Screw		***
16	6732-2	Connecting Shaft (4-1/8)	1	F079	A/A66D Aluminum Pop Rivet		***
17	5162-11	Roller Wheel (5" Poly) (Includes Item # F059)	2	F085	3/16 Rivet Backup Washer		***
18	8940	Roller Wheel Axle Bolt	2	F087	#10 x 7/8 Fender Washer		2
19	5710-16	36" Deck Housing, GHS (Includes Item # 23)	1	F124	10-32 x 3/8 Taptite Machine Screw		9
20	5705-0	Blade, 20" (RH Rotation)	1	F129	10-24 x 1/2 PTHMS		3
21	5706	Blade Hub & Trash Guard	2	F136	AN960C416L Washer		16
22	5705-2	Blade, 20" (LH Rotation)	1	F202	10-24 x 5/8 SHC Screw, GR5 SS		4
	5705-6	Blade Set (36" GHS Deck) (Includes Items # 20, 21, 22, F002 & F202)	***	F206	#2 x 3/16 Drive Pin		2
23	5747-1	Safety Tread (6 x 19)	1	F211	1/4-20 x 7/8 Hex Bolt (Refer to Special Instructions , Item # 2)		16
24	5775-2	Hitch Pin (#6)	4	F229	C-Clip (13/16)		2
25	5727-1	Washer Shim (5/8 ID)	4	F246	1/4-20 x 1/2 PTHMS		2
26	NS	Deck Serial Number Plate	1	F295	3/16 x 1-1/2 Split Spring Pin		1
27	8670	Tilt-Up Hook	1				
28	5051-15	Tee Gearbox, Shear	1	Special Instructions			
29	5060	Gearbox Connector Tube (2-5/16)	1	1	Torque Item # F018 (Two places, used at Items # 20 & 22) to 60 ft-lb. (81.4 N·m). DO NOT apply Loctite®.		
30	5052-3	1.375 x .750 x .187 Washer, Oblong	4	2	Apply Loctite® Threadlocker # 242 (Blue) to Item # F211 (16 places, used at Items # 15 & 29) prior to assembly. Torque to 90 in-lb. (10.2 N·m).		
31	5747-0	Safety Tread (3 x 6)	2	*	Order this part to use the splined deck PTO shaft with Model MT, MD and MC-Twin (S/N 98-33662 and on) if tractor is not equipped (tractors S/N prior to S/N 99-37748).		
32	5746	Gearbox Cover (36") (Includes Item # 31)	1	**	Order this part to use the splined deck PTO shaft with Model MS and MC (prior to S/N 98-33662) if tractor is not equipped (tractors S/N prior to S/N 99-37748).		
33	8619	PTO Shaft Guard	1	***	Service Part Only		
	8618	PTO Shaft Guard Assembly (Includes Items # 33, 34, F002 & F025)	*				
34	8618-1	Cover, PTO Shaft Guard	1				

NOTE: Decals for this assembly are not shown here. Refer to **DECK DECALS & WALKER TOUCH-UP PAINT** (Page 2) for Decal listing and placement information.

Use only genuine **Walker** replacement parts.

Effective Date 07-24-98

DGHS36 DECK ASSEMBLY (P/N 5710-15)

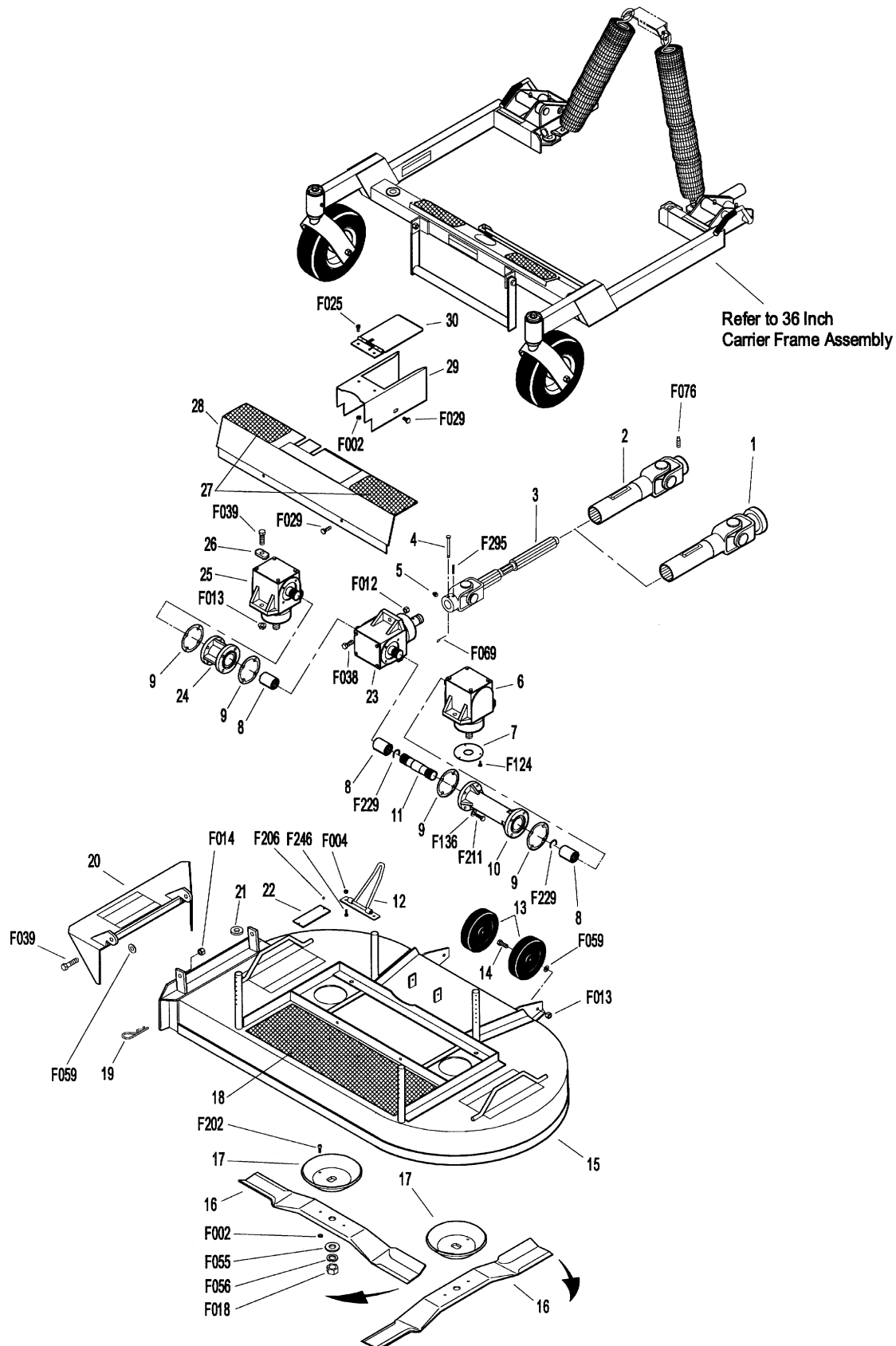


DSD36 DECK ASSEMBLY (P/N 5710-17)

ITEM NO.	PART NO.	DESCRIPTION	NO. REQ'D	ITEM NO.	PART NO.	DESCRIPTION	NO. REQ'D
DSD36 Deck Assembly (May Be Used On All Models)*				Fasteners			
1	7275-15	U-Joint Tube Assy, Spline	**	F002	10-24 Keps Nut		6
2	5275-15	U-Joint Tube Assy (9.5" OAL), Spline	***	F004	1/4-20 Keps Nut		2
3	5285-15	U-Joint Shaft Assy, 90 Degree, Spline (Includes Items # 4, 5 & F295)	1	F012	3/8-16 Keps Nut		1
4	8067-10	Shear Pin w/Cotter (Set of 5) (Includes Item # F069)	♦	F013	3/8-16 Whiz Locknut		6
5	5830	Grease Fitting	1	F014	3/8-16 ESNA Nut		2
6	5052-1	Blade Drive Gearbox (LH Rotation)	1	F018	5/8-18 Hex Nut		2
7	5706-4	Seal Protector Plate	3		(Refer to Special Instructions , Item # 1)		
8	6054	Spline Coupling	3	F025	10-24 x 3/8 PPHMS		2
9	P007	Gasket, Cap (Peerless #788030)	4	F029	1/4-20 x 1/2 Hex Bolt		4
10	5061	Gearbox Connector Tube (6-11/16)	1	F038	3/8-16 x 1 Hex Bolt		1
11	6732-2	Connecting Shaft (4-1/8)	1	F039	3/8-16 x 1-1/4 Hex Bolt		6
12	8670	Tilt-Up Hook	1	F055	5/8 SAE Washer		2
13	5162-11	Roller Wheel (5" Poly) (Includes Item # F059)	2	F056	5/8 Split Lock Washer		2
14	8940	Roller Wheel Axle Bolt	2	F059	3/8 Wave Spring Washer		4
15	5710-18	36" Deck Housing, SD (Includes Item # 18)	1	F069	3/32 x 1/2 Cotter Pin		1
16	5705-1	Blade, 20" (RH Rotation)	2	F076	3/8-16 x 5/8 SQH Set Screw		♦
	5705-5	Blade Set (36" SD Deck) (Includes Items # 16, 17, F002 & F202)	♦	F124	10-32 x 3/8 Taptite Machine Screw		9
17	5706	Blade Hub & Trash Guard	2	F136	AN960C416L Washer		16
18	5747-1	Safety Tread (6 x 19)	1	F202	10-24 x 5/8 SHC Screw, GR5 SS		4
19	5775-2	Hitch Pin (#6)	4	F206	#2 x 3/16 Drive Pin		2
20	5709-2	Discharge Shield, Hinged	1	F211	1/4-20 x 7/8 Hex Bolt		16
21	5727-1	Washer Shim (5/8 ID)	4		(Refer to Special Instructions , Item # 2)		
22	NS	Deck Serial Number Plate	1	F229	C-Clip (13/16)		2
23	5051-15	Tee Gearbox, Shear	1	F246	1/4-20 x 1/2 PTHMS		2
24	5060	Gearbox Connector Tube (2-1/2)	1	F295	3/16 x 1-1/2 Split Spring Pin		1
25	5053-1	Blade Drive Gearbox (RH Rotation)	1				
26	5052-3	1.375 x .750 x .187 Washer, Oblong	4				
27	5747-0	Safety Tread (3 x 6)	2				
28	5746	Gearbox Cover (36") (Includes Item # 27)	1				
29	8619	PTO Shaft Guard	1				
	8618	PTO Shaft Guard Assembly (Includes Items # 29, 30, F002 & F025)	♦				
30	8618-1	Cover, PTO Shaft Guard	1				
				Special Instructions			
				1	Torque Item # F018 (Two places, used at Item # 16) to 60 ft-lb (81.4 N·m). DO NOT apply Loctite®.		
				2	Apply Loctite® Threadlocker # 242 (Blue) to Item # F211 (16 places, used at Items # 10 & 24) prior to assembly. Torque to 90 in-lb (10.2 N·m).		
				*	Use of this Deck on GHS Tractors requires installation of P/N 5595-2 (Blower Intake Cover). Contact your Walker dealer.		
				**	Order this part to use the splined deck PTO shaft with Model MT, MD and MC-Twin (S/N 98-33662 and on) if tractor is not equipped (tractors S/N prior to S/N 99-37748).		
				***	Order this part to use the splined deck PTO shaft with Model MS and MC (prior to S/N 98-33662) if tractor is not equipped (tractors S/N prior to S/N 99-37748).		
				♦	Service Part Only		

NOTE: Decals for this assembly are not shown here. Refer to **DECK DECALS & WALKER TOUCH-UP PAINT** (Page 2) for Decal listing and placement information.

DSD36 DECK ASSEMBLY (P/N 5710-17)

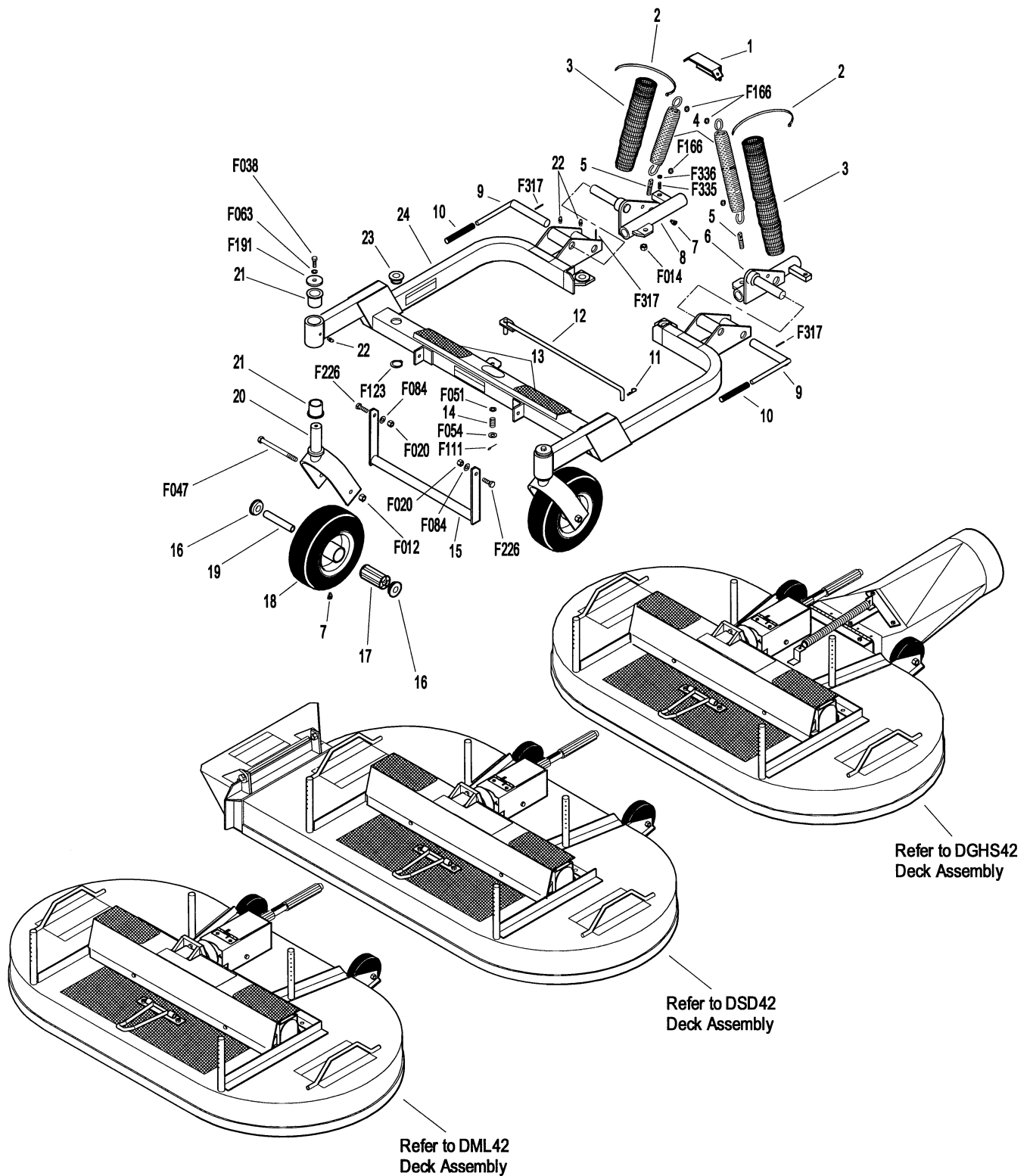


42 INCH COMPLETE CARRIER FRAME ASSEMBLY (P/N 5700-10)

ITEM NO.	PART NO.	DESCRIPTION	NO. REQ'D	ITEM NO.	PART NO.	DESCRIPTION	NO. REQ'D
42 Inch Complete Carrier Frame Assembly (May Be Used On All Models)				Fasteners			
1	5744-1	Spring Clip Bracket	1	F012	3/8-16 Keps Nut		2
2	5975-3	Cable Tie (50# x 7")	4	F014	3/8-16 ESNA Nut		2
3	5743-1	Spring Cover	2	F020	5/16-18 ESNA Nut		2
4	5743-2	Extension Spring (1-7/16 x 7-13/16)	2	F038	3/8-16 x 1 Hex Bolt		2
5	5743-3	Eyebolt (3/8-16 x 2)	2	F047	3/8-16 x 4-1/2 Hex Bolt		2
6	8667-10	Pivot Mount, LH	1	F051	3/8 SAE Washer		1
7	5830-3	Grease Fitting (45 Degree)	4	F054	AN960616 Washer		1
8	8667-20	Pivot Mount, RH	1	F063	3/8 Internal Star Lock Washer		2
9	8674	Lever, Deck Lock	2	F084	5/16 Wave Spring Washer		2
10	7406-1	Handle Grip (Red)	2	F111	1/8 x 3/4 Cotter Pin		1
11	7666	Hitch Pin (#3)	1	F123	1" External Snap Ring		4
12	5786-1	Deck Lift Rod (42" / 54")	1	F166	Retainer Ring		4
13	5748	Safety Tread (2 x 6)	2	F191	3/8 x 1-1/2 x 3/16 Washer		2
14	5682	Compression Spring (9/16 x 3/4)	1	F226	5/16-18 x 7/8 Hex Bolt		2
15	8669	Lift Handle	1	F317	3/16 x 1 Split Spring Pin		4
16	5714-7	Bearing Cap	4	F335	3/8-16 x 7/8 Set Screw, SS		2
17	5714-5	Bearing, Caster Wheel	2	F336	3/8-16 Jam Nut		2
18	5715-4	Caster Wheel Assy, Pneu. (8 x 3.00-4)	2				
		(Includes Items # 7, 16 & 17)		*	Service Part Only		
	5715-10	Tire, Pneumatic (8 x 3.00-4)	*	**	May be ordered as a factory-installed option or as a kit for dealer installation. Contact your Walker dealer.		
	5715-9	Tire Tube, Pneumatic (2.80/2.50-4)	*				
	5715-3	Caster Wheel, Semi-Pneumatic (8.25 x 2.75)	**				
19	5714-3	Axle Spacer Tube	2				
20	5770-2	Caster Wheel Fork	2				
21	5683	Pivot Bearing	4				
22	5830	Grease Fitting	6				
23	5740-2	Deck Pin Bushing (5/8 ID)	4				
24	8662-1	42" Carrier Frame	1				
		(Includes Item # 13)					
	8664	42" Carrier Frame w/Pivots	*				
		(Includes Items # 6, 8, 9, 24, F317, F335 & F336)					

NOTE: Decals for this assembly are not shown here. Refer to **DECK DECALS & WALKER TOUCH-UP PAINT** (Page 2) for Decal listing and placement information.

42 INCH COMPLETE CARRIER FRAME ASSEMBLY (P/N 5700-10)



DGHS42 DECK ASSEMBLY (P/N 5705)

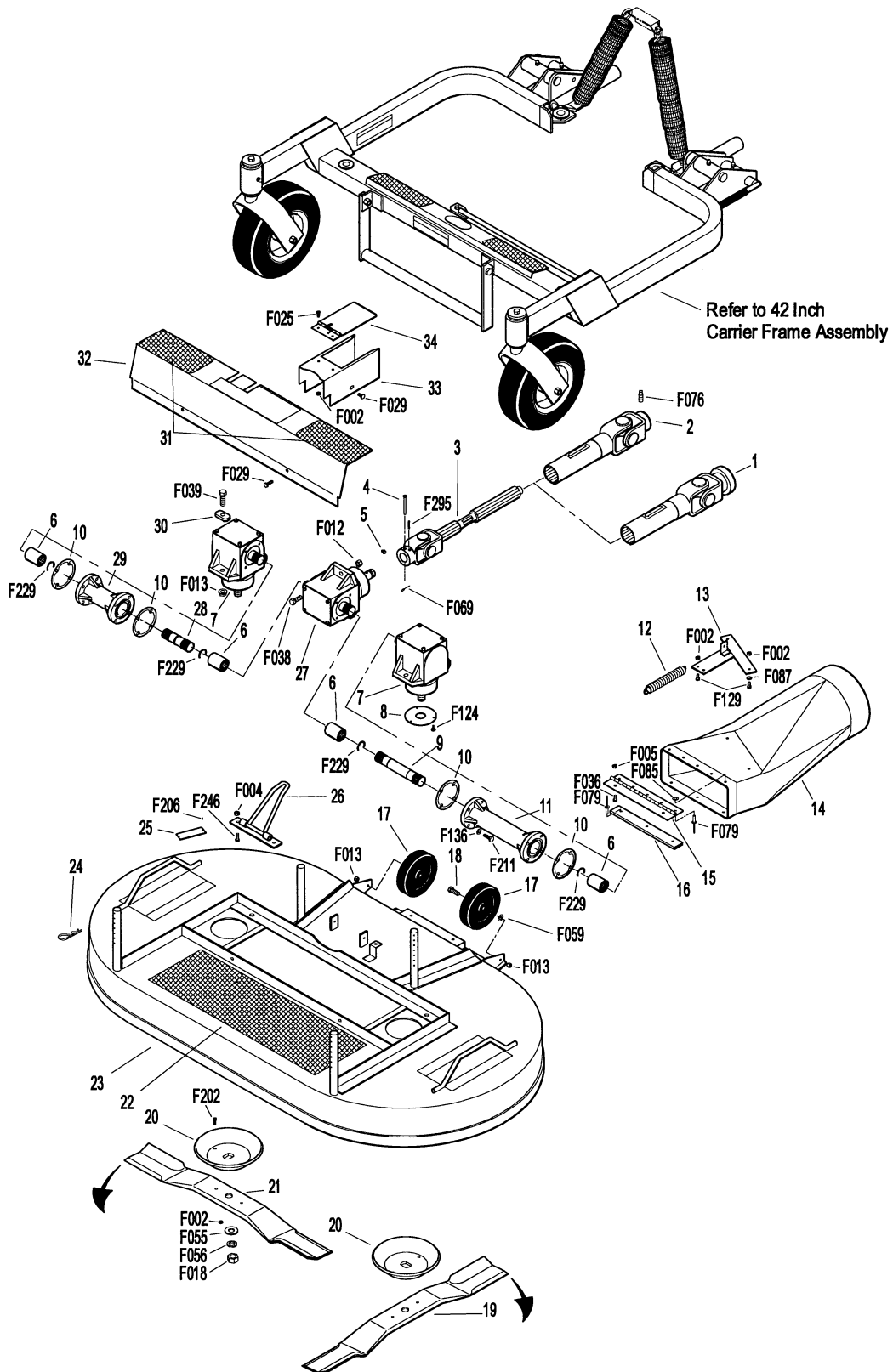
ITEM NO.	PART NO.	DESCRIPTION	NO. REQ'D	ITEM NO.	PART NO.	DESCRIPTION	NO. REQ'D
DGHS42 Deck Assembly (May Be Used On All GHS Models)				Fasteners			
1	7275-15	U-Joint Tube Assy, Spline	*	F002	10-24 Keps Nut		9
2	5275-15	U-Joint Tube Assy (9.5" OAL), Spline	**	F004	1/4-20 Keps Nut		2
3	5285-15	U-Joint Shaft Assy, 90 Degree, Spline (Includes Items # 4, 5 & F295)	1	F005	1/4-20 ESNA Nut		2
4	8067-10	Shear Pin w/Cotter (Set of 5) (Includes Item # F069)	***	F012	3/8-16 Keps Nut		1
5	5830	Grease Fitting	1	F013	3/8-16 Whiz Locknut		6
6	6054	Spline Coupling	4	F018	5/8-18 Hex Nut (Refer to Special Instructions , Item # 1)		2
7	5052-1	Blade Drive Gearbox (LH rotation)	2	F025	10-24 x 3/8 PPHMS		2
8	5706-4	Seal Protector Plate	3	F029	1/4-20 x 1/2 Hex Bolt		4
9	6732-3	Connecting Shaft (6-1/4)	1	F036	1/4-20 x 1/2 SBH Screw		2
10	P007	Gasket, Cap (Peerless #788030)	4	F038	3/8-16 x 1 Hex Bolt		1
11	5063	Gearbox Connector Tube (8-5/8)	1	F039	3/8-16 x 1-1/4 Hex Bolt		4
12	8677	Extension Spring (1 x 6-1/16)	1	F055	5/8 SAE Washer		2
13	8678	Spring Mount, Chute	1	F056	5/8 Split Lock Washer		2
14	5797	Discharge Chute (6-1/2 Diameter)	1	F059	3/8 Wave Spring Washer		2
	5794	Discharge Chute Assembly (Includes Items # 14, 15, 16, F079 & F085)	***	F069	3/32 x 1/2 Cotter Pin		1
15	5726	Chute Hinge (2 x 8)	1	F076	3/8-16 x 5/8 SQH Set Screw		***
16	5755	Chute Lower Lip	1	F079	A/A66D Aluminum Pop Rivet		***
17	5162-11	Roller Wheel (5" Poly) (Includes Item # F059)	2	F085	3/16 Rivet Backup Washer		***
18	8490	Roller Wheel Axle Bolt	2	F087	#10 x 7/8 Fender Washer		2
19	5705-3	Blade, 22" (RH Rotation)	1	F124	10-32 x 3/8 Taptite Machine Screw		9
20	5706	Blade Hub & Trash Guard	2	F129	10-24 x 1/2 PTHMS		3
21	5705-4	Blade, 22" (LH Rotation)	1	F136	AN960C416L Washer		16
	5705-8	Blade Set (42" GHS Deck) (Includes Items # 19, 20, 21, F002 & F202)	*	F202	10-24 x 5/8 SHC Screw, GR5 SS		4
22	5747-1	Safety Tread (6 x 19)	1	F206	#2 x 3/16 Drive Pin		2
23	5704-4	42" Deck Housing, GHS (Includes Items # 17, 18, 22 & F013)	1	F211	1/4-20 x 7/8 Hex Bolt (Refer to Special Instructions , Item # 2)		16
24	5775-2	Hitch Pin (#6)	4	F229	C-Clip (13/16)		4
25	NS	Deck Serial Number Plate	1	F246	1/4-20 x 1/2 PTHMS		2
26	8670	Tilt-Up Hook	1	F295	3/16 x 1-1/2 Split Spring Pin		1
27	5051-15	Tee Gearbox, Shear	1	Special Instructions			
28	6732-1	Connecting Shaft (2")	1	1	Torque Item # F018 (Two places, used at Items # 19 & 21) to 60 ft-lb. (81.4 N·m). DO NOT apply Loctite®.		
29	5062	Gearbox Connector Tube (4-3/8)	1	2	Apply Loctite® Threadlocker # 242 (Blue) to Item # F211 (16 places, used at Items # 11 & 29) prior to assembly. Torque to 90 in-lb. (10.2 N·m).		
30	5052-3	1.375 x .750 x .187 Washer, Oblong	4	*	Order this part to use the splined deck PTO shaft with Model MT, MD and MC-Twin (S/N 98-33662 and on) if tractor is not equipped (tractors S/N prior to S/N 99-37748).		
31	5747-0	Safety Tread (3 x 6)	2	**	Order this part to use the splined deck PTO shaft with Model MS and MC (prior to S/N 98-33662) if tractor is not equipped (tractors S/N prior to S/N 99-37748).		
32	5785	Gearbox Cover (42") (Includes Item # 31)	1	***	Service Part Only		
33	8619	PTO Shaft Guard	1				
	8618	PTO Shaft Guard Assembly (Includes Items # 33, 34, F002 & F025)	***				
34	8618-1	Cover, PTO Shaft Guard	1				

NOTE: Decals for this assembly are not shown here. Refer to **DECK DECALS & WALKER TOUCH-UP PAINT** (Page 2) for Decal listing and placement information.

Use only genuine **Walker** replacement parts.

Effective Date 07-24-98

DGHS42 DECK ASSEMBLY (P/N 5705)

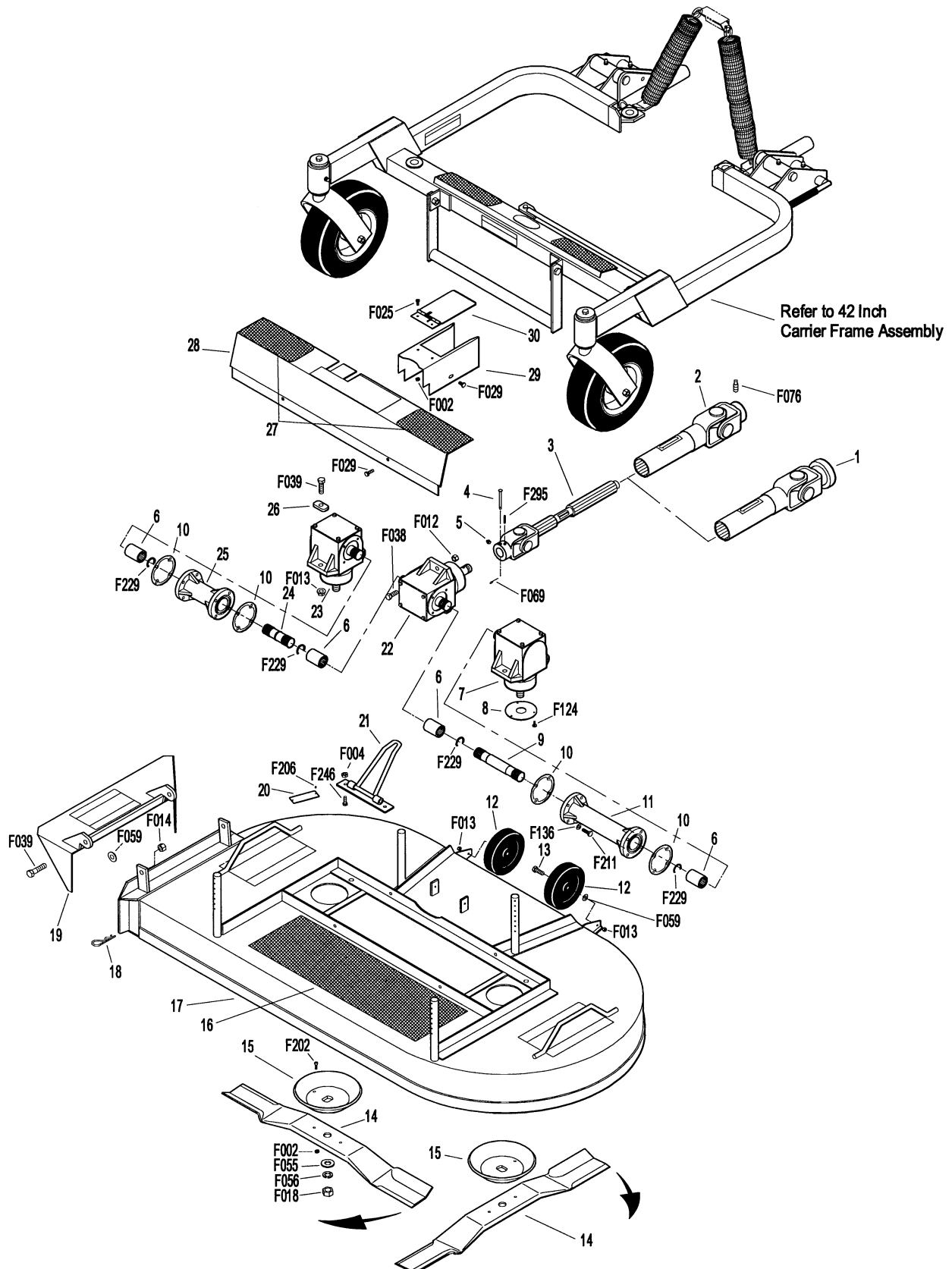


DSD42 DECK ASSEMBLY (P/N 5707-10)

ITEM NO.	PART NO.	DESCRIPTION	NO. REQ'D	ITEM NO.	PART NO.	DESCRIPTION	NO. REQ'D
DSD42 Deck Assembly (May Be Used On All Models)*				Fasteners			
1	7275-15	U-Joint Tube Assy, Spline	**	F002	10-24 Keps Nut		6
2	5275-15	U-Joint Tube Assy (9.5" OAL), Spline	***	F004	1/4-20 Keps Nut		2
3	5285-15	U-Joint Shaft Assy, 90 Degree, Spline (Includes Items # 4, 5 & F295)	1	F012	3/8-16 Keps Nut		1
4	8067-10	Shear Pin w/Cotter (Set of 5) (Includes Item # F069)	♦	F013	3/8-16 Whiz Locknut		6
5	5830	Grease Fitting	1	F014	3/8-16 ESNA Nut		2
6	6054	Spline Coupling	4	F018	5/8-18 Hex Nut		2
7	5052-1	Blade Drive Gearbox (LH Rotation)	1		(Refer to Special Instructions , Item # 1)		
8	5706-4	Seal Protector Plate	3	F025	10-24 x 3/8 PPHMS		2
9	6732-3	Connecting Shaft (6-1/4)	1	F029	1/4-20 x 1/2 Hex Bolt		4
10	P007	Gasket, Cap (Peerless #788030)	4	F038	3/8-16 x 1 Hex Bolt		1
11	5063	Gearbox Connector Tube (8-5/8)	1	F039	3/8-16 x 1-1/4 Hex Bolt		6
12	5162-11	Roller Wheel (5" Poly) (Includes Item # F059)	2	F055	5/8 SAE Washer		2
13	8490	Roller Wheel Axle Bolt	2	F056	5/8 Split Lock Washer		2
14	5705-3	Blade, 22" (RH Rotation)	2	F059	3/8 Wave Spring Washer		4
	5705-7	Blade Set (42" SD Deck) (Includes Items # 14, 15, F002 & F202)	♦	F069	3/32 x 1/2 Cotter Pin		1
15	5706	Blade Hub & Trash Guard	2	F076	3/8-16 x 5/8 SQH Set Screw		♦
16	5747-1	Safety Tread (6 x 19)	1	F124	10-32 x 3/8 Taptite Machine Screw		9
17	5703-3	42" Deck Housing, SD (Includes Items # 12, 13, 16 & F013)	1	F136	AN960C416L Washer		16
18	5775-2	Hitch Pin (#6)	4	F202	10-24 x 5/8 SHC Screw, GR5 SS		4
19	5709-2	Discharge Shield, Hinged	1	F206	#2 x 3/16 Drive Pin		2
20	NS	Deck Serial Number Plate	1	F211	1/4-20 x 7/8 Hex Bolt		16
21	8670	Tilt-Up Hook	1		(Refer to Special Instructions , Item # 2)		
22	5051-15	Tee Gearbox, Shear	1	F229	C-Clip (13/16)		4
23	5053-1	Blade Drive Gearbox (RH Rotation)	1	F246	1/4-20 x 1/2 PTHMS		2
24	6732-1	Connecting Shaft (2")	1	F295	3/16 x 1-1/2 Split Spring Pin		1
25	5062	Gearbox Connector Tube (4-3/8)	1				
26	5052-3	1.375 x .750 x .187 Washer, Oblong	4				
27	5747-0	Safety Tread (3 x 6)	2				
28	5785	Gearbox Cover (42" Deck) (Includes Item # 27)	1				
29	8619	PTO Shaft Guard	1				
	8618	PTO Shaft Guard Assembly (Includes Items # 29, 30, F002 & F025)	♦				
30	8618-1	Cover, PTO Shaft Guard	1				
				Special Instructions			
				1	Torque Item # F018 (Two places, used at Item # 14) to 60 ft-lb. (81.4 N·m). DO NOT apply Loctite®.		
				2	Apply Loctite® Threadlocker # 242 (Blue) to Item # F211 (16 places, used at Items # 11 & 25) prior to assembly. Torque to 90 in-lb. (10.2 N·m).		
				*	Use of this Deck on GHS Tractors requires installation of P/N 5595-2 (Blower Intake Cover). Contact your Walker dealer.		
				**	Order this part to use the splined deck PTO shaft with Model MT, MD and MC-Twin (S/N 98-33662 and on) if tractor is not equipped (tractors S/N prior to S/N 99-37748).		
				***	Order this part to use the splined deck PTO shaft with Model MS and MC (prior to S/N 98-33662) if tractor is not equipped (tractors S/N prior to S/N 99-37748).		
				♦	Service Part Only		

NOTE: Decals for this assembly are not shown here. Refer to **DECK DECALS & WALKER TOUCH-UP PAINT** (Page 2) for Decal listing and placement information.

DSD42 DECK ASSEMBLY (P/N 5707-10)

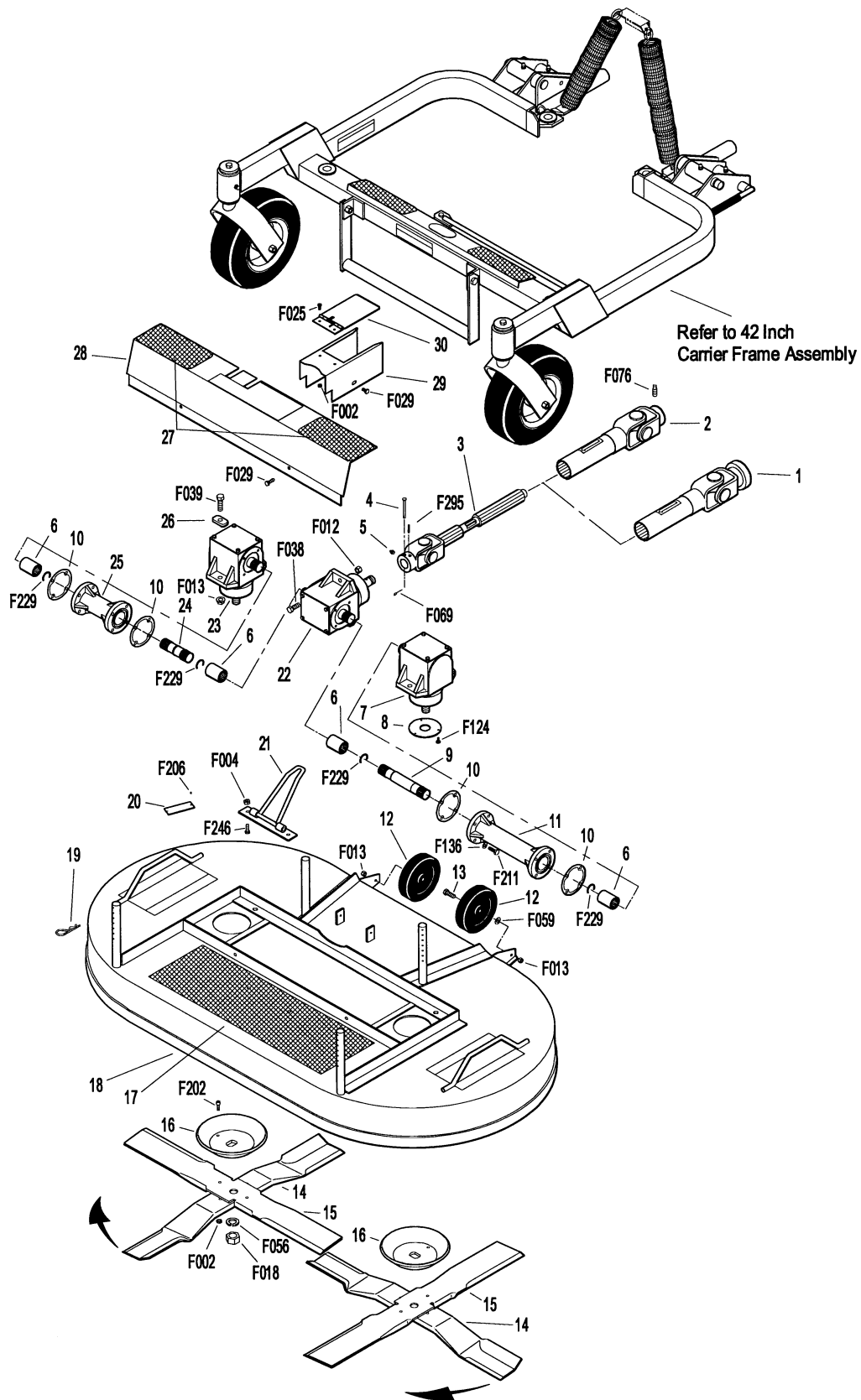


DML42 DECK ASSEMBLY (P/N 5707-11)

ITEM NO.	PART NO.	DESCRIPTION	NO. REQ'D	ITEM NO.	PART NO.	DESCRIPTION	NO. REQ'D
DML42 Deck Assembly (May Be Used On Models MC Twin, MDD/MDG & MT)*				Fasteners			
1	7275-15	U-Joint Tube Assy, Spline	**	F002	10-24 Keps Nut		6
2	5275-15	U-Joint Tube Assy (9.5" OAL), Spline	***	F004	1/4-20 Keps Nut		2
3	5285-15	U-Joint Shaft Assy, 90 Degree, Spline (Includes Items # 4, 5 & F295)	1	F012	3/8-16 Keps Nut		1
4	8067-10	Shear Pin w/Cotter (Set of 5) (Includes Item # F069)	♦	F013	3/8-16 Whiz Locknut		6
5	5830	Grease Fitting	1	F018	5/8-18 Hex Nut		2
6	6054	Spline Coupling	4		(Refer to Special Instructions , Item # 1)		
7	5052-1	Blade Drive Gearbox (LH Rotation)	1	F025	10-24 x 3/8 PPHMS		2
8	5706-4	Seal Protector Plate	3	F029	1/4-20 x 1/2 Hex Bolt		4
9	6732-3	Connecting Shaft (6-1/4)	1	F038	3/8-16 x 1 Hex Bolt		1
10	P007	Gasket, Cap (Peerless #788030)	4	F039	3/8-16 x 1-1/4 Hex Bolt		4
11	5063	Gearbox Connector Tube (8-5/8)	1	F056	5/8 Split Lock Washer		2
12	5162-11	Roller Wheel (5" Poly) (Includes Item # F059)	2	F059	3/8 Wave Spring Washer		2
13	8490	Roller Wheel Axle Bolt	2	F069	3/32 x 1/2 Cotter Pin		1
14	5705-10	Blade, 21" (Lower Mulching)	2	F076	3/8-16 x 5/8 SQH Set Screw		♦
15	5705-11	Blade, 22" (Upper Mulching)	2	F124	10-32 x 3/8 Taptite Machine Screw		9
	5705-12	Blade Set (42" Mulching Deck) (Includes Items # 14, 15, 16, F002 & F202)	♦	F136	AN960C416L Washer		16
16	5706	Blade Hub & Trash Guard	2	F202	10-24 x 5/8 SHC Screw, GR5 SS		4
17	5747-1	Safety Tread (6 x 19)	1	F206	#2 x 3/16 Drive Pin		2
18	5701-1	42" Deck Housing, Mulching (Includes Items # 12, 13, 17 & F013)	1	F211	1/4-20 x 7/8 Hex Bolt		16
19	5775-2	Hitch Pin (#6)	4		(Refer to Special Instructions , Item # 2)		
20	NS	Deck Serial Number Plate	1	F229	C-Clip (13/16)		4
21	8670	Tilt-Up Hook	1	F246	1/4-20 x 1/2 PTHMS		2
22	5051-15	Tee Gearbox, Shear	1	F295	3/16 x 1-1/2 Split Spring Pin		1
23	5053-1	Blade Drive Gearbox (RH Rotation)	1				
24	6732-1	Connecting Shaft (2")	1				
25	5062	Gearbox Connector Tube (4-3/8)	1				
26	5052-3	1.375 x .750 x .187 Washer, Oblong	4				
27	5747-0	Safety Tread (3 x 6)	2				
28	5785	Gearbox Cover (42") (Includes Item # 27)	1				
29	8619	PTO Shaft Guard	1				
	8618	PTO Shaft Guard Assembly (Includes Items # 29, 30, F002 & F025)	♦				
30	8618-1	Cover, PTO Shaft Guard	1				
				Special Instructions			
				1	Torque Item # F018 (Two places, used at Item # 14) to 60 ft-lb. (81.4 N·m). DO NOT apply Loctite®.		
				2	Apply Loctite® Threadlocker # 242 (Blue) to Item # F211 (16 places, used at Items # 11 & 25) prior to assembly. Torque to 90 in-lb. (10.2 N·m).		
				*	Use of this Deck on GHS Tractors requires installation of P/N 5595-2 (Blower Intake Cover). Contact your Walker dealer.		
				**	Order this part to use the splined deck PTO shaft with Model MT, MD and MC-Twin (S/N 98-33662 and on) if tractor is not equipped (tractors S/N prior to S/N 99-37748).		
				***	Order this part to use the splined deck PTO shaft with Model MS and MC (prior to S/N 98-33662) if tractor is not equipped (tractors S/N prior to S/N 99-37748).		
				♦	Service Part Only		

NOTE: Decals for this assembly are not shown here. Refer to **DECK DECALS & WALKER TOUCH-UP PAINT** (Page 2) for Decal listing and placement information.

DML42 DECK ASSEMBLY (P/N 5707-11)



48 INCH COMPLETE CARRIER FRAME ASSEMBLY (P/N 7700-1)

ITEM NO.	PART NO.	DESCRIPTION	NO. REQ'D	ITEM NO.	PART NO.	DESCRIPTION	NO. REQ'D
48 Inch Complete Carrier Frame Assembly (May Be Used On GHS Models MDD/MDG & MT)				Fasteners			
1	5744-1	Spring Clip Bracket	1	F012	3/8-16 Keps Nut		2
2	5975-3	Cable Tie (50# x 7")	4	F014	3/8-16 ESNA Nut		2
3	5743-1	Spring Cover	2	F020	5/16-18 ESNA Nut		2
4	5743-2	Extension Spring (1-7/16 x 7-13/16)	2	F038	3/8-16 x 1 Hex Bolt		2
5	5743-3	Eyebolt, (3/8-16 x 2)	2	F047	3/8-16 x 4-1/2 Hex Bolt		2
6	5830-3	Grease Fitting (45 Degree)	4	F051	3/8 SAE Washer		1
7	8667-10	Pivot Mount, LH	1	F054	AN960616 Washer		1
8	8667-20	Pivot Mount, RH	1	F063	3/8 Internal Star Lock Washer		2
9	8674	Lever, Deck Lock	2	F084	5/16 Wave Spring Washer		2
10	7406-1	Handle Grip (Red)	2	F111	1/8 x 3/4 Cotter Pin		1
11	7666	Hitch Pin (#3)	1	F123	1" External Snap Ring		4
12	7786	Deck Lift Rod (48")	1	F166	Retainer Ring		4
13	5748	Safety Tread (2 x 6)	2	F191	3/8 x 1-1/2 x 3/16 Washer		2
14	5682	Compression Spring (9/16 x 3/4)	1	F226	5/16-18 x 7/8 Hex Bolt		2
15	8669	Lift Handle	1	F317	3/16 x 1 Split Spring Pin		4
16	5714-7	Bearing Cap	4	F335	3/8-16 x 7/8 Set Screw, SS		2
17	5714-5	Bearing, Caster Wheel	2	F336	3/8-16 Jam Nut		2
18	5715-4	Caster Wheel Assy, Pneu. (8 x 3.00-4)	2				
		(Includes Items # 6, 16 & 17)		* Service Part Only			
	5715-10	Tire, Pneumatic (8 x 3.00-4)	*	** May be ordered as a factory-installed option or as a kit for dealer installation. Contact your Walker dealer.			
	5715-9	Tire Tube, Pneumatic (2.80/2.50-4)	*				
	5715-3	Caster Wheel, Semi-Pneumatic (8.25 x 2.75)	**				
19	5714-3	Axle Spacer Tube	2				
20	5770-2	Caster Wheel Fork	2				
21	5683	Pivot Bearing	4				
22	5830	Grease Fitting	6				
23	5740-2	Deck Pin Bushing (5/8 ID)	4				
24	8663-1	48" Carrier Frame	1				
		(Includes Item # 13)					
	8665	48" Carrier Frame w/Pivots	*				
		(Includes Items # 7-9, 24, F317, F335 & F336)					

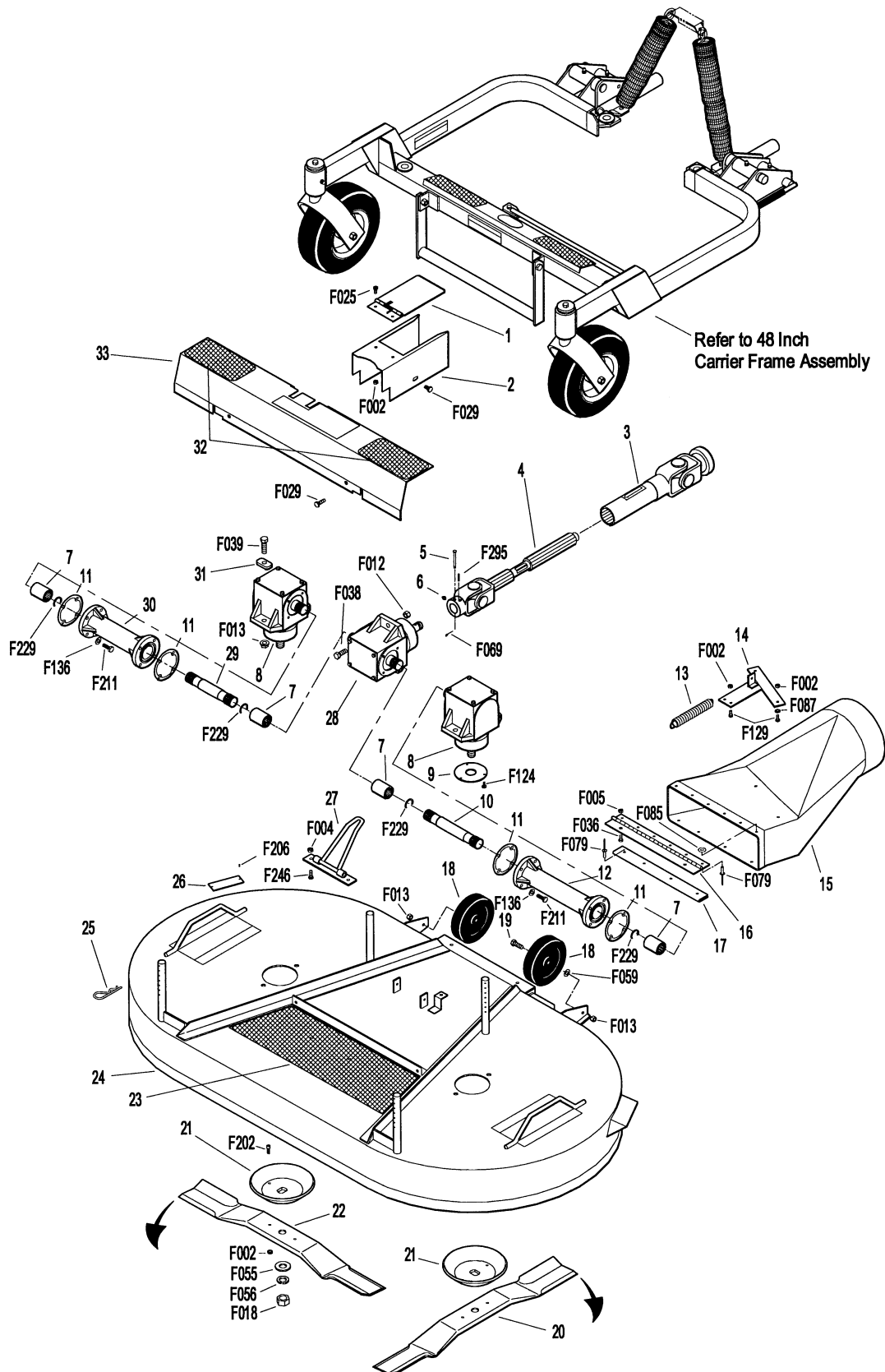
NOTE: Decals for this assembly are not shown here. Refer to **DECK DECALS & WALKER TOUCH-UP PAINT** (Page 2) for Decal listing and placement information.



DGHS48 DECK ASSEMBLY (P/N 7702-1)

ITEM NO.	PART NO.	DESCRIPTION	NO. REQ'D	ITEM NO.	PART NO.	DESCRIPTION	NO. REQ'D
DGHS48 Deck Assembly (May Be Used On GHS Models MDD/MDG & MT)				Fasteners			
1	8618-1	Cover, PTO Shaft Guard	1	F002	10-24 Keps Nut		9
2	8619	PTO Shaft Guard	1	F004	1/4-20 Keps Nut		2
	8618	PTO Shaft Guard Assembly (Includes Items # 1, 2, F002 & F025)	*	F005	1/4-20 ESNA Nut		2
3	7275-15	U-Joint Tube Assy, Spline	**	F012	3/8-16 Keps Nut		1
4	7285-15	U-Joint Shaft Assy, 90 Degree, Spline (Includes Items # 5, 6 & F295)	1	F013	3/8-16 Whiz Locknut		6
5	8067-10	Shear Pin w/Cotter (Set of 5) (Includes Item # F069)	*	F018	5/8-18 Hex Nut		2
6	5830	Grease Fitting	1		(Refer to Special Instructions , Item # 1)		
7	6054	Spline Coupling	4	F025	10-24 x 3/8 PPHMS		2
8	5052-1	Blade Drive Gearbox (LH Rotation)	2	F029	1/4-20 x 1/2 Hex Bolt		4
9	5706-4	Seal Protector Plate	3	F036	1/4-20 x 1/2 SBH Screw		2
10	6732-6	Connecting Shaft (7")	1	F038	3/8-16 x 1 Hex Bolt		1
11	P007	Gasket, Cap (Peerless #788030)	4	F039	3/8-16 x 1-1/4 Hex Bolt		4
12	5066	Gearbox Connector Tube (9-5/16)	1	F055	5/8 SAE Washer		2
13	8677	Extension Spring (1 x 6-1/16)	1	F056	5/8 Split Lock Washer		2
14	8678	Spring Mount, Chute	1	F059	3/8 Wave Spring Washer		2
15	7798	Discharge Chute (3-1/2 x 11-1/2)	1	F069	3/32 x 1/2 Cotter Pin		1
	7794	Discharge Chute Assembly (Includes Items # 15, 16, 17, F079 & F085)	*	F079	A/A66D Aluminum Pop Rivet		*
16	7726	Chute Hinge (2 x 11)	1	F085	3/16 Rivet Backup Washer		*
17	7755	Chute Lower Lip	1	F087	#10 x 7/8 Fender Washer		2
18	5162-11	Roller Wheel (5" Poly) (Includes Item # F059)	2	F124	10-32 x 3/8 Taptite Machine Screw		9
19	8490	Roller Wheel Axle Bolt	2	F129	10-24 x 1/2 PTHMS		3
20	7705-1	Blade, 25" (RH Rotation)	1	F136	AN960C416L Washer		16
21	5706	Blade Hub & Trash Guard	2	F202	10-24 x 5/8 SHC Screw, GR5 SS		4
22	7705-2	Blade, 25" (LH Rotation)	1	F206	#2 x 3/16 Drive Pin		2
	7705-3	Blade Set (48" Deck) (Includes Items # 20, 21, 22, F002 & F202)	*	F211	1/4-20 x 7/8 Hex Bolt		16
23	5747-6	Safety Tread (6 x 18-1/8)	1		(Refer to Special Instructions , Item # 2)		
24	7701	48" Deck Housing, GHS (Includes Items # 18, 19, 23 & F013)	1	F229	C-Clip (13/16)		4
25	5775-2	Hitch Pin (#6)	4	F246	1/4-20 x 1/2 PTHMS		2
26	NS	Deck Serial Number Plate	1	F295	3/16 x 1-1/2 Split Spring Pin		1
27	8670	Tilt-Up Hook	1	Special Instructions			
28	7751-15	Tee Gearbox (1.2:1 Ratio), Shear	1	1	Torque Item # F018 (Two places, used at Items # 20 & 22) to 60 ft-lb. (81.4 N·m). DO NOT apply Loctite®.		
29	6732-2	Connecting Shaft (4-1/8)	1	2	Apply Loctite® Threadlocker # 242 (Blue) to Item # F211 (16 places, used at Items # 12 & 30) prior to assembly. Torque to 90 in-lb. (10.2 N·m).		
30	5061	Gearbox Connector Tube (6-11/16)	1	*	Service Part Only		
31	5052-3	1.375 x .750 x .187 Washer, Oblong	4	**	Order this part to use the splined deck PTO shaft with Model MT, MD and MC-Twin (S/N 98-33662 and on) if tractor is not equipped (tractors S/N prior to S/N 9937748).		
32	5747-0	Safety Tread (3 x 6)	2	NOTE: Decals for this assembly are not shown here. Refer to DECK DECALS & WALKER TOUCH-UP PAINT (Page 2) for Decal listing and placement information.			
33	7785	Gearbox Cover (48") (Includes Item # 32)	1				

DGHS48 DECK ASSEMBLY (P/N 7702-1)



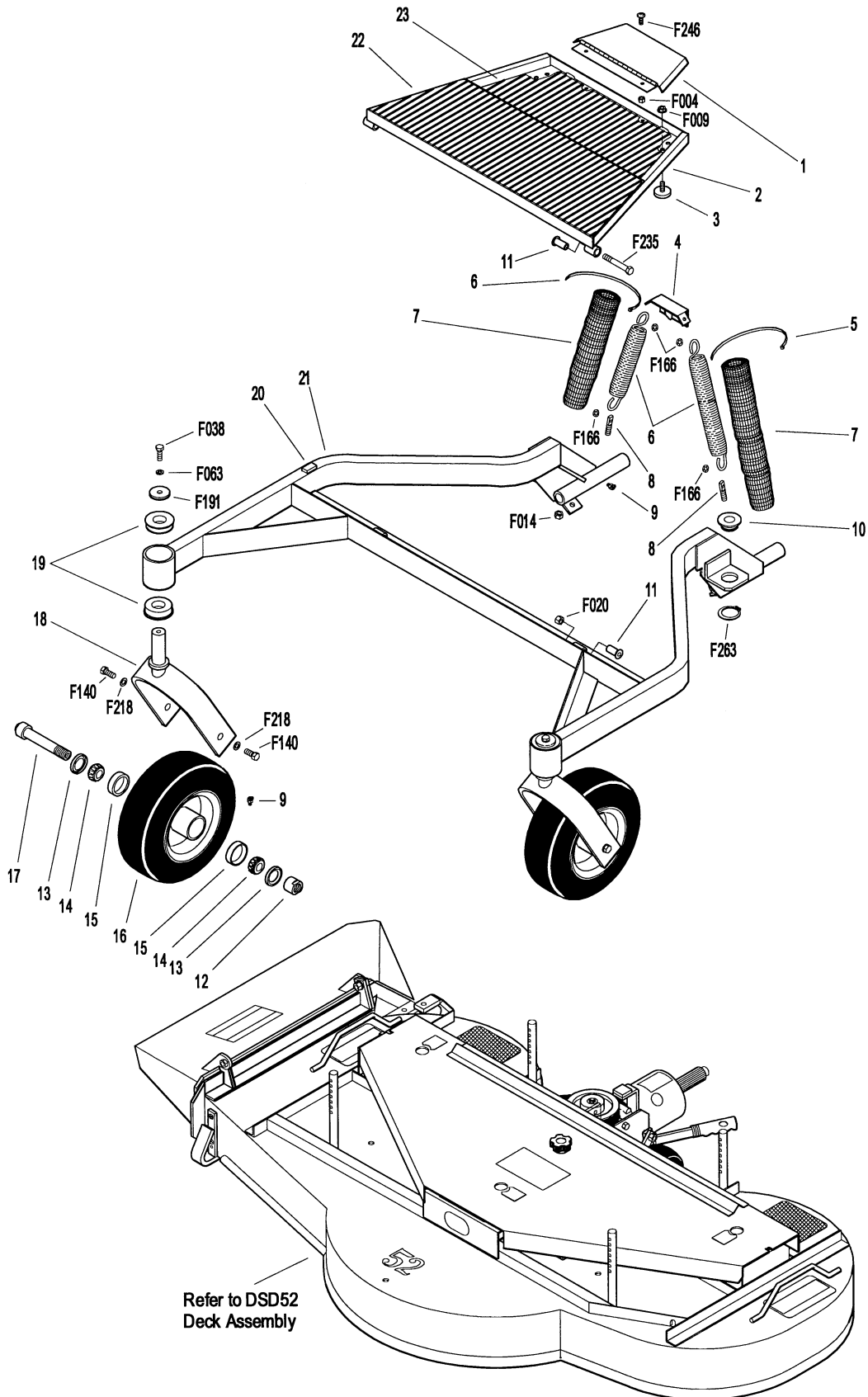
52 INCH COMPLETE CARRIER FRAME ASSEMBLY (P/N 8757)

ITEM NO.	PART NO.	DESCRIPTION	NO. REQ'D	ITEM NO.	PART NO.	DESCRIPTION	NO. REQ'D
52 Inch Complete Carrier Frame Assembly (May Be Used On Models MC Twin, MDD/MDG & MT)				Fasteners			
1	8789	Pulley Guard	1	F004	1/4-20 Keps Nut		2
2	8786	Footrest (Includes Items # 22 & 23)	1	F009	5/16-18 Whiz Locknut		2
3	7844	Rubber Bumper (1.25 OD x .250)	2	F014	3/8-16 ESNA Nut		2
4	5744-1	Spring Clip Bracket	1	F020	5/16-18 ESNA Nut		2
5	5975-3	Cable Tie (50# x 7")	4	F038	3/8-16 x 1 Hex Bolt		2
6	5743-2	Extension Spring (1-7/16 x 7-13/16)	2	F063	3/8 Internal Star Lock Washer		2
7	5743-1	Spring Cover	2	F140	7/16-14 x 1 Hex Bolt		4
8	5743-3	Eyebolt (3/8-16 x 2)	2	F166	Retainer Ring		4
9	5830-3	Grease Fitting (45 Degree)	4	F191	3/8 x 1-1/2 x 3/16 Washer		2
10	8740	Deck Pin Bushing (3/4 ID)	4	F218	7/16 Split Lock Washer		4
11	5103-2	Pivot Bushing	4	F235	5/16-18 x 2-1/2 Hex Bolt		2
12	8766	Axle Nut (3/4-16)	2	F246	1/4-20 x 1/2 PTHMS		2
13	8768-2	Seal, Caster Wheel	4	F263	1-1/4 External Snap Ring		4
14	8037	Bearing Cone (3/4 ID)	4				
15	8037-2	Bearing Race	4				
16	8768	Caster Wheel Assy, Pneu. (11 x 4.00-5) (Includes Items # 9 & 15)	2				
	8768-3	Tire, Pneumatic (11 x 4.00-5)	*				
	8768-5	Caster Wheel (5 x 3)	*				
17	8767	Axle, Caster Wheel (5-1/8)	2				
18	8765	Caster Wheel Fork (5-1/4)	2				
19	8769	Flanged Bearing (1.00 ID x 2.00 OD)	4				
20	8788	Rubber Bumper (Self-Adhesive Mount)	1				
21	8756	52" Carrier Frame (Includes Item # 20)	1				
22	8786-4	Rubber Mat, Front	1				
23	8786-3	Rubber Mat, Rear	1				

* Service Part Only

NOTE: Decals for this assembly are not shown here. Refer to **DECK DECALS & WALKER TOUCH-UP PAINT** (Page 2) for Decal listing and placement information.

52 INCH COMPLETE CARRIER FRAME ASSEMBLY (P/N 8757)



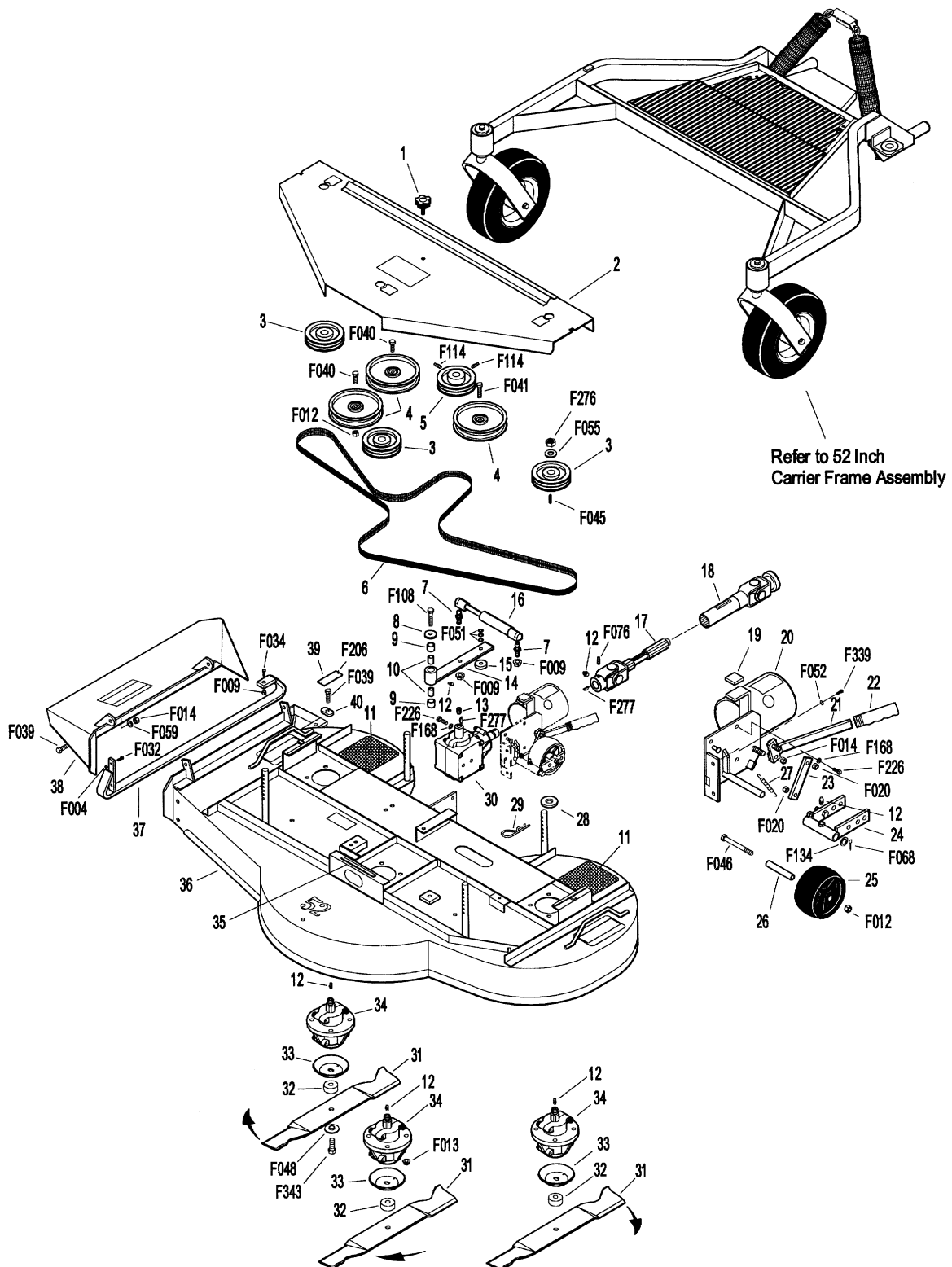
DSD52 DECK ASSEMBLY (P/N 8758)

ITEM NO.	PART NO.	DESCRIPTION	NO. REQ'D	ITEM NO.	PART NO.	DESCRIPTION	NO. REQ'D
DSD52 Deck Assembly (May Be Used On Models MC Twin, MDD/MDG & MT)*				Fasteners			
1	8787	Deck Cover Knob	1	F004	1/4-20 Keps Nut		2
2	8754	Cover Plate, 52"	1	F009	5/16-18 Whiz Locknut		3
3	8755	Blade Drive Pulley (3-7/8)	3	F012	3/8-16 Keps Nut		2
4	8245	Idler Pulley (6")	3	F013	3/8-16 Whiz Locknut		12
5	6240-2	Drive Pulley (4-1/2 / 3V) (Includes Items # F114 & F277)	1	F014	3/8-16 ESNA Nut		3
6	8736	Blade Drive Belt (R3VX1000-2)	1	F020	5/16-18 ESNA Nut		2
7	5146	10mm Ball Stud	2	F032	1/4-20 x 3/4 Hex Bolt		2
8	5841	Retainer Washer	1	F034	5/16-18 x 3/4 Hex Bolt		1
9	7201-1	Needle Bearing	2	F039	3/8-16 x 1-1/4 Hex Bolt		14
10	7201	Bearing Inner Race	2	F040	3/8-16 x 1-1/2 Hex Bolt		2
11	8735	Safety Tread (5 x 6)	2	F041	3/8-16 x 1-3/4 Hex Bolt		1
12	5830	Grease Fitting	6	F045	3/16 x 3/16 x 3/4 Key		3
13	6206	Pressure Relief Valve	1	F046	3/8-16 x 3-1/2 Hex Bolt		1
14	8373-3	Idler Arm (2-Hole)	1	F048	1/2 SAE Washer		3♦
15	8374	Idler Arm Guide	1	F051	3/8 SAE Washer		3
16	8762	Dampening Spring (Gas)	1	F052	5/16 External Star Lock Washer		2
17	8285-15	U-Joint Shaft Assy, 90 Degree, Spline (Includes Items # 12, F076 & F277)	1	F055	5/8 SAE Washer		3
18	7275-15	U-Joint Tube Assy, Spline	**	F059	3/8 Wave Spring Washer		2
19	8788	Rubber Bumper (Self-Adhesive Mount)	1	F068	1/8 x 1 Cotter Pin		1
20	8745-3	Mount Bracket & PTO Guard (Includes Items # 19, F052, F068 & F339)	1	F076	3/8-16 x 5/8 SQH Set Screw (Refer to Special Instructions , Item # 1)		1
	8745	Dolly Wheel/PTO Guard Assembly (Includes Items # 12, 19, 20, 23-27, F012, F014, F020, F046, F068, F134, F168 & F226)	***	F108	3/8-16 x 2 Hex Bolt		1
21	8745-14	Retract Lever	1	F114	5/16-18 x 5/8 SQH Set Screw (Refer to Special Instructions , Item # 2)		2
22	5850-1	Handle Grip	1	F134	AN960816L Washer		1
23	8745-12	Actuator Link	1	F168	5/16 Split Lock Washer		8
24	8745-13	Dolly Wheel Mount Bracket (Includes Item # 12)	1	F206	#2 x 3/16 Drive Pin		2
25	6715	Roller Wheel (3-7/8)	1	F226	5/16-18 x 7/8 Hex Bolt (Refer to Special Instructions , Item # 3)		8
26	8745-15	Axle Spacer Tube	1	F276	5/8-11 Jam Nut		3
27	5229	Extension Spring (1/2 x 2-1/4)	1	F277	3/16 x 5/8 Woodruff Key (#605)		2
28	8727	Washer Shim, 13/16 ID x 1/4	4	F339	5/16-18 x 3/4 Self-Tapping Bolt (Refer to Special Instructions , Item # 4)		2
29	8775	Hitch Pin (#219)	4	F343	1/2-20 x 2-1/4 Hex Bolt		3
30	8051	Right Angle Gearbox (Includes Item # 13)	1	Special Instructions			
31	5705-14	Blade, 18-1/2 (RH Rotation)	3	1	Apply Loctite® Threadlocker # 242 (Blue) to Item # F076 (Used at Item # 17) prior to assembly. Torque to 400 in-lb. (45.2 N·m).		
	8738-7	Blade Set (52" SD)	***	2	Apply Loctite® Threadlocker # 242 (Blue) to Item # F114 (Two places, used at Item # 5) prior to assembly. Torque to 190 in-lb. (21.5 N·m).		
32	5705-25	Blade Spacer	3	3	Apply Loctite® Threadlocker # 242 (Blue) to Item # F226 (8 places, used at Item # 20) prior to assembly. Torque to 18 ft-lb. (24.4 N·m).		
33	8739	Spindle Shield	3	4	Torque Item # F339 (Two places, used at Item # 20) to 200 in-lb. (22.6 N·m). DO NOT apply Loctite®.		
34	8052	Blade Spindle (Includes Item # 12)	3	*	Use of this Deck on GHS Tractors requires installation of P/N 5595-2 (Blower Intake Cover). Contact your Walker dealer.		
35	8790	Rubber Cushion Strip	3	**	Order this part to use the splined deck PTO shaft with Model MT, MD and MC-Twin (S/N 98-33662 and on) if tractor is not equipped (tractors S/N prior to S/N 99-37748).		
36	8753	52" Deck Housing, SD (Includes Items # 11 & 35)	1	***	Service Part Only		
37	8707	Skid Bar (52/62)	1	♦	Average number used per assembly. Adjust as required.		
38	8709	Discharge Shield	1	NOTE: Decals for this assembly are not shown here. Refer to DECK DECALS & WALKER TOUCH-UP PAINT (Page 2) for Decal listing and placement information.			
39	NS	Deck Serial Number Plate	1				
40	5052-3	1.375 x .750 x .187 Washer, Oblong	12				

Use only genuine **Walker** replacement parts.

Effective Date 07-24-98

DSD52 DECK ASSEMBLY (P/N 8758)



8691 MULCHING KIT (FOR DSD52 DECK ASSEMBLY)

ITEM NO.	PART NO.	DESCRIPTION	NO. REQ'D
----------	----------	-------------	-----------

8691 Mulching Kit*

(May Be Used On Models MC Twin, MDD/MDG & MT)**

1	8691-4	Right Hand Baffle	1
2	8691-3	Center Baffle	1
3	8691-2	Left Hand Baffle	1
4	5705-15	Blade, 18-3/8 Upper Mulch	3
	8738-3	Mulching Blade Set (52" Deck)	***
5	8691-10	Blade Saddle	3
6	5705-14	Blade, 18-1/2 (RH Rotation)	3♦

ITEM NO.	PART NO.	DESCRIPTION	NO. REQ'D
----------	----------	-------------	-----------

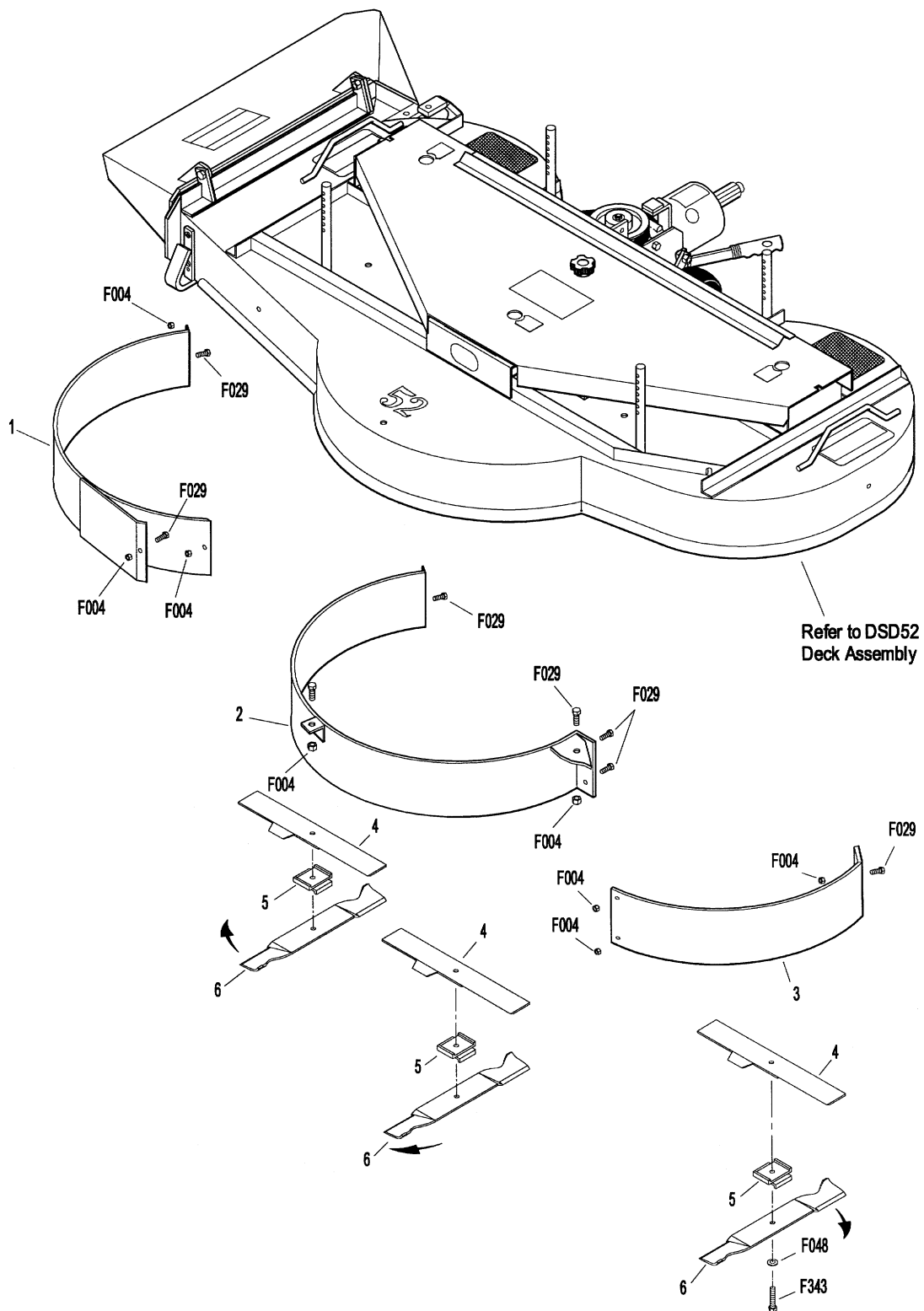
Fasteners

F004	1/4-20 Keps Nut	3
F029	1/4-20 x 1/2 Hex Bolt	9
F048	1/2 SAE Washer	3
F343	1/2-20 x 2-1/4 Hex Bolt	3

- * May be ordered as a factory-installed option or as a kit for dealer installation. Contact your Walker dealer.
- ** 8691 Mulching Kit requires DSD52 Deck Assembly. Use of this Deck on GHS Tractors requires installation of P/N 5595-2 (Blower Intake Cover). Contact your Walker dealer.
- *** Service Part Only. Includes 5705-15 Blades (3 Pieces).
- ♦ This is an existing part reused from DSD52 Deck Assembly and is not included with Mulching Kit.

NOTE: Decals for this assembly are not shown here. Refer to **DECK DECALS & WALKER TOUCH-UP PAINT** (Page 2) for Decal listing and placement information.

8691 MULCHING KIT (FOR DSD52 DECK ASSEMBLY)



54 INCH COMPLETE CARRIER FRAME ASSEMBLY (P/N 6700-2)

ITEM NO.	PART NO.	DESCRIPTION	NO. REQ'D
----------	----------	-------------	-----------

54 Inch Complete Carrier Frame Assembly (May Be Used On Models MC Twin, MDD/MDG & MT)

1	5975-3	Cable Tie (50# x 7")	4
2	5744-1	Spring Clip Bracket	1
3	5743-1	Spring Cover	2
4	5743-2	Extension Spring (1-1/2 x 7-13/16)	2
5	5743-3	Eyebolt (3/8-16 x 2)	2
6	8667-20	Pivot Mount, RH	1
7	5830-3	Grease Fitting (45 Degree)	4
8	8667-10	Pivot Mount, LH	1
9	8674-11	Lever, Deck Lock, LH	1
10	7406-1	Handle Grip, Red	2
11	7666	Hitch Pin (#3)	1
12	5786-1	Deck Lift Rod (42" / 54")	1
13	5748	Safety Tread (2 x 6)	2
14	5682	Compression Spring (9/16 x 3/4)	1
15	5714-7	Bearing Cap	4
16	5714-5	Bearing, Caster Wheel	2
17	5715-4	Caster Wheel Assy, Pneu. (8 x 3.00-4)	2
		(Includes Items # 7, 15 & 16)	
	5715-10	Tire, Pneumatic (8 x 3.00-4)	*
	5715-9	Tire Tube, Pneumatic (2.80/2.50-4)	*
	5715-3	Caster Wheel, Semi-Pneumatic (8.25 x 2.75)	**
18	5714-3	Axle Spacer Tube	2
19	5770-2	Caster Wheel Fork	2
20	5683	Pivot Bearing	4
21	5830	Grease Fitting	2
22	5740-2	Deck Pin Bushing (5/8 ID)	4
23	6710-4	54" Carrier Frame	1
		(Includes Item # 13)	
	6711	54" Carrier Frame w/Pivots	*
		(Includes Items # 6, 8, 9, 23, 24, F317, F335 & F336)	
24	8674-10	Lever, Deck Lock, RH	1

ITEM NO.	PART NO.	DESCRIPTION	NO. REQ'D
----------	----------	-------------	-----------

Fasteners

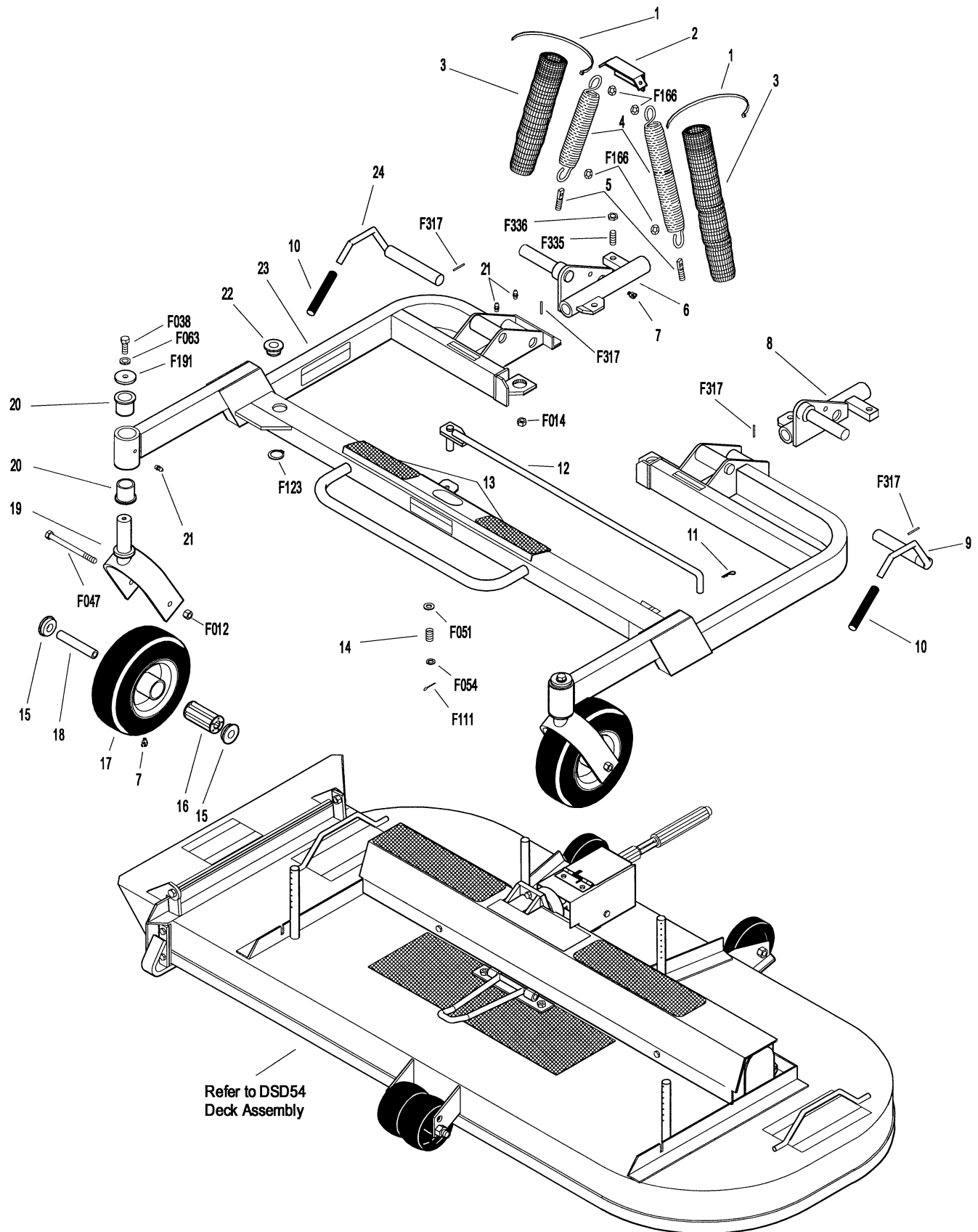
F012	3/8-16 Keps Nut	2
F014	3/8-16 ESNA Nut	2
F038	3/8-16 x 1 Hex Bolt	2
F047	3/8-16 x 4-1/2 Hex Bolt	2
F051	3/8 SAE Washer	1
F054	AN960616 Washer	1
F063	3/8 Internal Star Lock Washer	2
F111	1/8 x 3/4 Cotter Pin	1
F123	1" External Snap Ring	4
F166	Retainer Ring	4
F191	3/8 x 1-1/2 x 3/16 Washer	2
F317	3/16 x 1 Split Spring Pin	4
F335	3/8-16 x 7/8 Set Screw, SS	2
F336	3/8-16 Jam Nut	2

* Service Part Only

** May be ordered as a factory-installed option or as a kit for dealer installation. Contact your Walker Dealer.

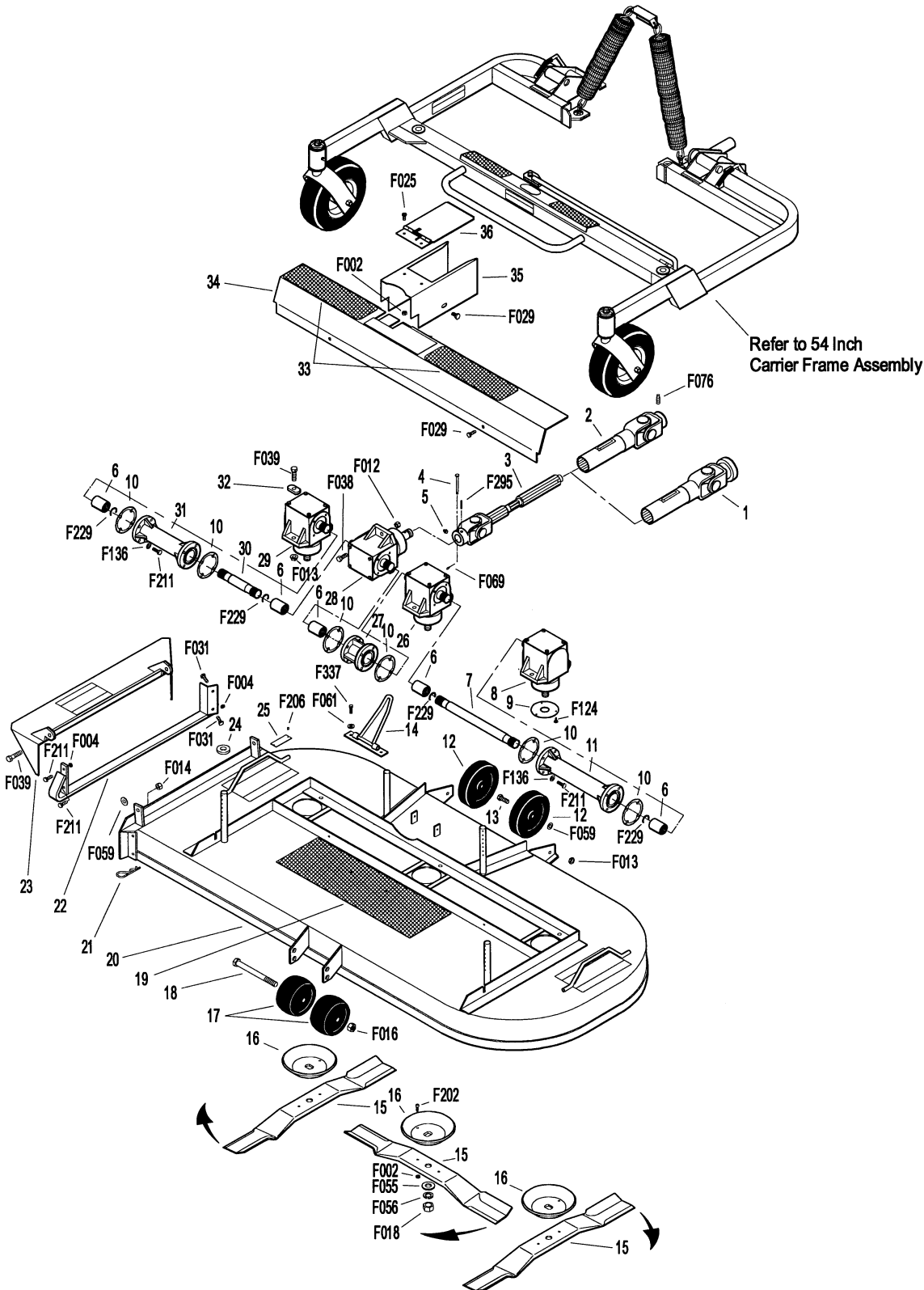
NOTE: Decals for this assembly are not shown here. Refer to **DECK DECALS & WALKER TOUCH-UP PAINT** (Page 2) for Decal listing and placement information.

54 INCH COMPLETE CARRIER FRAME ASSEMBLY (P/N 6700-2)



DSD54 DECK ASSEMBLY (P/N 6701)

ITEM NO.	PART NO.	DESCRIPTION	NO. REQ'D	ITEM NO.	PART NO.	DESCRIPTION	NO. REQ'D
DSD54 Deck Assembly				Fasteners			
(May Be Used On Models MC Twin, MDD/MDG & MT)*				F002	10-24 Keps Nut		8
1	7275-15	U-Joint Tube Assy, Spline	**	F004	1/4-20 Keps Nut		4
2	5275-15	U-Joint Tube Assy (9.5" OAL), Spline	***	F012	3/8-16 Keps Nut		1
3	5285-15	U-Joint Shaft Assy, 90 Degree, Spline	1	F013	3/8-16 Whiz Locknut		6
		(Includes Items # 4, 5 & F295)		F014	3/8-16 ESNA Nut		2
4	8067-10	Shear Pin w/Cotter (Set of 5)	♦	F016	1/2-13 Self-Locking Nut		1
		(Includes Item # F069)		F018	5/8-18 Hex Nut		3
5	5830	Grease Fitting	1		(Refer to Special Instructions , Item # 1)		
6	6054	Spline Coupling	5	F025	10-24 x 3/8 PPHMS		2
7	6732-5	Connecting Shaft (11-1/8)	1	F029	1/4-20 x 1/2 Hex Bolt		4
8	5052-1	Blade Drive Gearbox (LH Rotation)	1	F031	1/4-20 x 5/8 Hex Bolt		2
9	5706-4	Seal Protector Plate	4	F038	3/8-16 x 1 Hex Bolt		1
10	P007	Gasket, Cap (Peerless #788030)	6	F039	3/8-16 x 1-1/4 Hex Bolt		8
11	5064	Gearbox Connector Tube (13-1/2)	1	F055	5/8 SAE Washer		3
12	5162-11	Roller Wheel (5" Poly)	2	F056	5/8 Split Lock Washer		3
		(Includes Item # F059)		F059	3/8 Wave Spring Washer		4
13	8490	Roller Wheel Axle Bolt	2	F061	1/4 Internal Star Lock Washer		2
14	8670	Tilt-Up Hook	1	F069	3/32 x 1/2 Cotter Pin		1
15	5705-0	Blade, 20" (RH Rotation)	3	F076	3/8-16 x 5/8 SQH Set Screw		♦
	5705-9	Blade Set (54" SD Deck)	♦	F124	10-32 x 3/8 Taptite Machine Screw		12
		(Includes Items # 15, 16, F002 & F202)		F136	AN960C416L Washer		24
16	5706	Blade Hub & Trash Guard	3	F202	10-24 x 5/8 SHC Screw, GR5 SS		6
17	6715	Roller Wheel (3-7/8)	2	F206	#2 x 3/16 Drive Pin		2
18	6716-3	Front Axle, Anti-Scalp Roller (Bolt)	1	F211	1/4-20 x 7/8 Hex Bolt		26
19	5747-1	Safety Tread (6 x 19)	1		(Refer to Special Instructions , Items # 2 & 3)		
20	6708	54" Deck Housing, SD	1	F229	C-Clip (13/16)		4
		(Includes Item # 19)		F295	3/16 x 1-1/2 Split Spring Pin		1
21	5775-2	Hitch Pin (#6)	4	F337	1/4-20 x 5/8 Self-Tap Bolt		2
22	6707	Skid Bar (54")	1	Special Instructions			
23	6709	Discharge Shield (54")	1	1	Torque Item # F018 (Three places, used at Item # 15) to		
24	5727-1	Washer Shim (5/8 ID)	4		60 ft-lb. (81.4 N·m). DO NOT apply Loctite®.		
25	NS	Deck Serial Number Plate	1	2	Apply Loctite® Threadlocker # 242 (Blue) to Item # F211		
26	5058	Tee Gearbox, Blade Drive	1		(24 places, used at Items # 11, 27 & 31) prior to assembly.		
27	5060	Gearbox Connector Tube (2-5/16)	1		Torque to 90 in-lb. (10.2 N·m).		
28	5051-15	Tee Gearbox, Shear	1	3	DO NOT apply these instructions to Item # F211 when		
29	5053-1	Blade Drive Gearbox (RH Rotation)	1		used at Item # 22 (Two places).		
30	6732-4	Connecting Shaft (5-5/16)	1	*	Use of this Deck on GHS Tractors requires installation of P/N		
31	5065	Gearbox Connector Tube (7-11/16)	1		5595-2 (Blower Intake Cover). Contact your Walker dealer.		
32	5052-3	1.375 x .750 x .187 Washer, Oblong	6	**	Order this part to use the splined deck PTO shaft with Model		
33	5747-3	Safety Tread (3 x 11)	2		MT, MD and MC-Twin (S/N 98-33662 and on) if tractor is not		
34	6785	Gearbox Cover (54")	1		equipped (tractors S/N prior to S/N 99-37748).		
		(Includes Item # 33)		***	Order this part to use the splined deck PTO shaft with Model		
35	8619	PTO Shaft Guard	1		MC (prior to S/N 98-33662) if tractor is not equipped (tractors		
	8619	PTO Shaft Guard Assembly	♦		S/N prior to S/N 99-37748).		
		(Includes # 35, 36, F002, F025)		♦	Service Part Only		
36	8618-1	Cover, PTO Shaft Guard	1	NOTE: Decals for this assembly are not shown here. Refer to			
				DECK DECALS & WALKER TOUCH-UP PAINT (Page 2)			
				for Decal listing and placement information.			



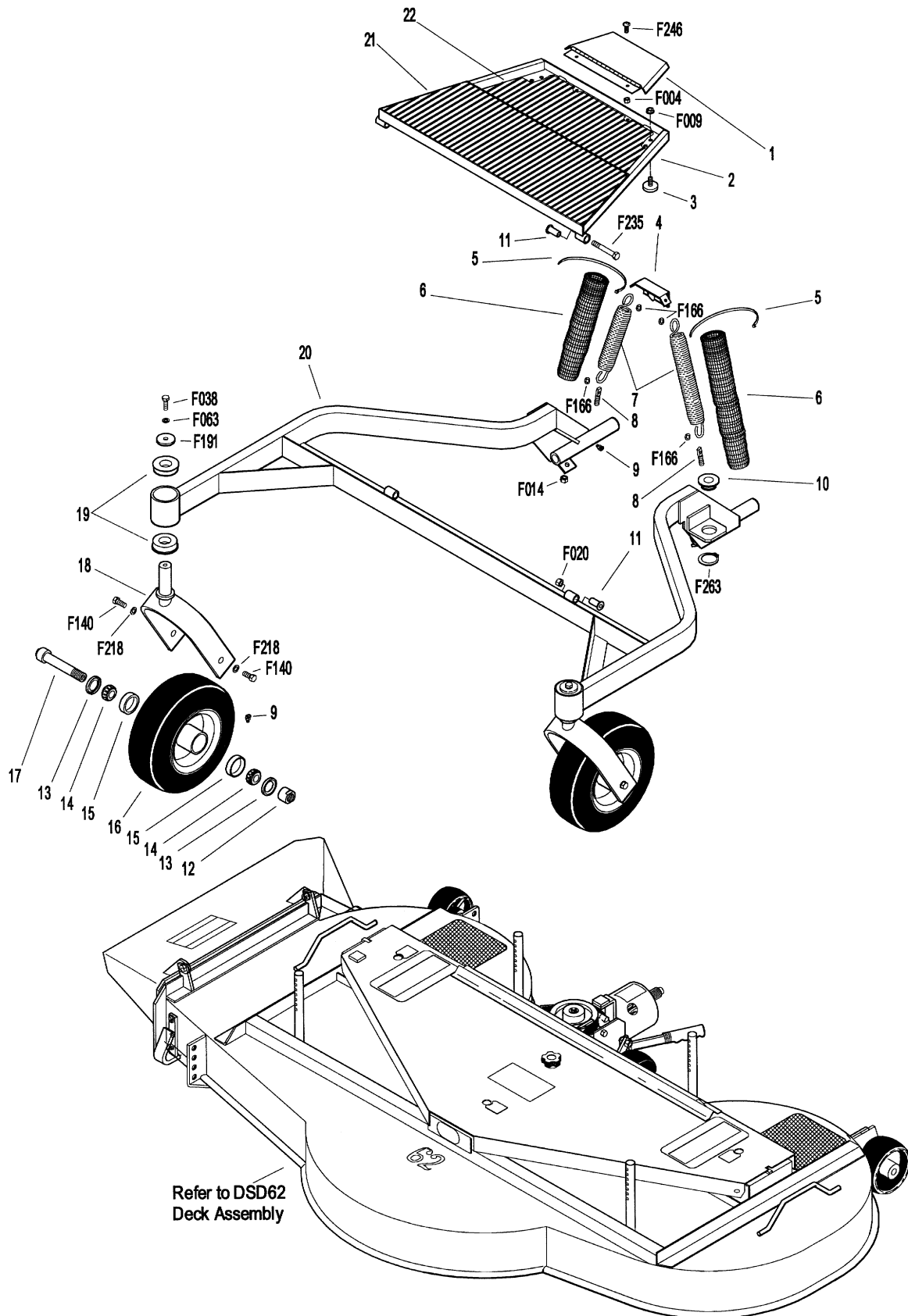
62 INCH COMPLETE CARRIER FRAME ASSEMBLY (P/N 8700-1)

ITEM NO.	PART NO.	DESCRIPTION	NO. REQ'D	ITEM NO.	PART NO.	DESCRIPTION	NO. REQ'D
62 Inch Complete Carrier Frame Assembly (May Be Used On Models MDD/MDG & MT)				Fasteners			
1	8789	Pulley Guard	1	F004	1/4-20 Keps Nut		2
2	8786	Footrest (Includes Items # 21 & 22)	1	F009	5/16-18 Whiz Locknut		2
3	7844	Rubber Bumper (1.25 OD x .250)	2	F014	3/8-16 ESNA Nut		2
4	5744-1	Spring Clip Bracket	1	F020	5/16-18 ESNA Nut		2
5	5975-3	Cable Tie (50# x 7")	4	F038	3/8-16 x 1 Hex Bolt		2
6	5743-1	Spring Cover	2	F063	3/8 Internal Star Lock Washer		2
7	5743-2	Extension Spring (1-7/16 x 7-13/16)	2	F140	7/16-14 x 1 Hex Bolt		4
8	5743-3	Eyebolt (3/8-16 x 2)	2	F166	Retainer Ring		4
9	5830-3	Grease Fitting (45 Degree)	4	F191	3/8 x 1-1/2 x 3/16 Washer		2
10	8740	Deck Pin Bushing (3/4 ID)	4	F218	7/16 Split Lock Washer		4
11	5103-2	Pivot Bushing	4	F235	5/16-18 x 2-1/2 Hex Bolt		2
12	8766	Axle Nut (3/4-16)	2	F246	1/4-20 x 1/2 PTHMS		2
13	8768-2	Seal, Caster Wheel	4	F263	1-1/4 External Snap Ring		4
14	8037	Bearing Cone (3/4 ID)	4				
15	8037-2	Bearing Race	4				
16	8768	Caster Wheel Assy, Pneu. (11 x 4.00-5) (Includes Items # 9 & 15)	2				
	8768-3	Tire, Pneumatic (11 x 4.00-5)	*				
	8768-5	Caster Wheel (5 x 3)	*				
17	8767	Axle, Caster Wheel (5-1/8)	2				
18	8765	Caster Wheel Fork (5-1/4)	2				
19	8769	Flanged Bearing (1.00 ID x 2.00 OD)	4				
20	8713-2	62" Carrier Frame	1				
21	8786-4	Rubber Mat, Front	1				
22	8786-3	Rubber Mat, Rear	1				

* Service Part Only

NOTE: Decals for this assembly are not shown here. Refer to **DECK DECALS & WALKER TOUCH-UP PAINT** (Page 2) for Decal listing and placement information.

62 INCH COMPLETE CARRIER FRAME ASSEMBLY (P/N 8700-1)



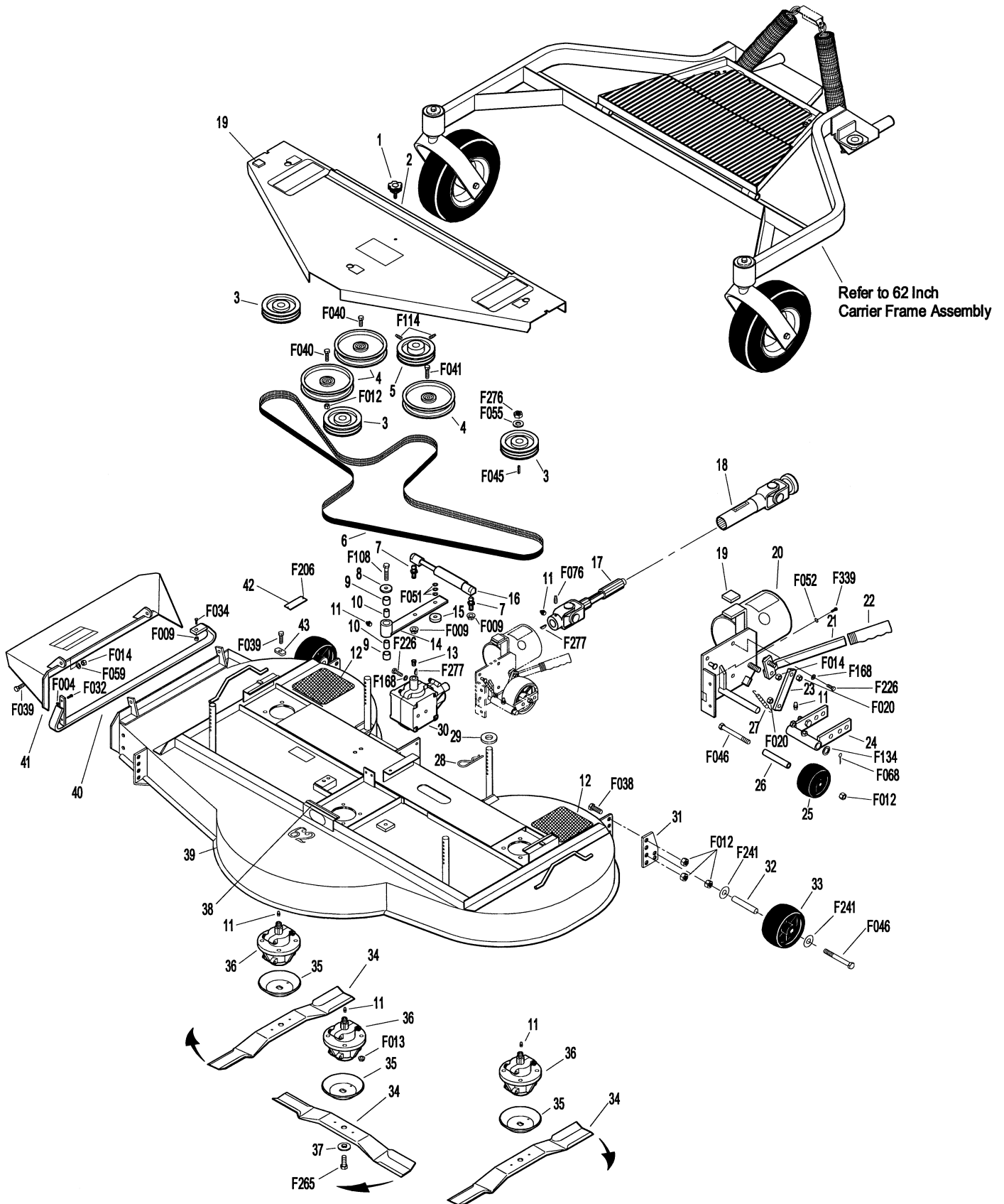
DSD62 DECK ASSEMBLY (P/N 8702-1)

ITEM NO.	PART NO.	DESCRIPTION	NO. REQ'D	ITEM NO.	PART NO.	DESCRIPTION	NO. REQ'D
DSD62 Deck Assembly				Fasteners			
(May Be Used On Models MDD/MDG & MT)*				F004	1/4-20 Keps Nut		2
1	8787	Deck Cover Knob	1	F009	5/16-18 Whiz Locknut		3
2	8785	Cover Plate, 62" (Includes Item # 19)	1	F012	3/8-16 Keps Nut		11
3	8240	Blade Drive Pulley (4-1/2)	3	F013	3/8-16 Whiz Locknut		12
4	8245	Idler Pulley (6")	3	F014	3/8-16 ESNA Nut		3
5	6240-2	Drive Pulley (4-1/2 / 3V)	1	F020	5/16-18 ESNA Nut		2
		(Includes Item # F114 & F277)		F032	1/4-20 x 3/4 Hex Bolt		2
6	8731	Blade Drive Belt, (2/3VX1180)	1	F034	5/16-18 x 3/4 Hex Bolt		1
7	5146	10mm Ball Stud	2	F038	3/8-16 x 1 Hex Bolt		6
8	5841	Retainer Washer	1	F039	3/8-16 x 1-1/4 Hex Bolt		14
9	7201-1	Needle Bearing	2	F040	3/8-16 x 1-1/2 Hex Bolt		2
10	7201	Bearing Inner Race	2	F041	3/8-16 x 1-3/4 Hex Bolt		1
11	5830	Grease Fitting	6	F045	3/16 x 3/16 x 3/4 Key		3
12	8747	Safety Tread (6 x 6)	2	F046	3/8-16 x 3-1/2 Hex Bolt		4
13	6206	Pressure Relief Valve	1	F051	3/8 SAE Washer		3♦
14	8373-3	Idler Arm (2-Hole)	1	F052	5/16 External Star Lock Washer		2
15	8374	Idler Arm Guide	1	F055	5/8 SAE Washer		3
16	8762	Dampening Spring (Gas)	1	F059	3/8 Wave Spring Washer		2
17	8285-15	U-Joint Shaft Assy, 90 Degree, Spline	1	F068	1/8 x 1 Cotter Pin		1
		(Includes Items # 11, F076 & F277)		F076	3/8-16 x 5/8 SQH Set Screw		1
18	7275-15	U-Joint Tube Assy, Spline	**		(Refer to Special Instructions , Item # 1)		
19	8788	Rubber Bumper (Self-Adhesive Mount)	2	F108	3/8-16 x 2 Hex Bolt		1
20	8745-3	Mount Bracket & PTO Guard	1	F114	5/16-18 x 5/8 SQH Set Screw		2
		(Includes Items # 19, F052, F068 & F339)			(Refer to Special Instructions , Item # 2)		
	8745	Dolly Wheel/PTO Guard Assembly	***	F134	AN960816L Washer		1
		(Includes Items # 11, 19, 20, 23-27, F012, F014, F020, F046, F068, F134, F168 & F226)		F168	5/16 Split Lock Washer		8
21	8745-14	Retract Lever	1	F206	#2 x 3/16 Drive Pin		2
22	5850-1	Handle Grip	1	F226	5/16-18 x 7/8 Hex Bolt		8
23	8745-12	Actuator Link	1		(Refer to Special Instructions , Item # 3)		
24	8745-13	Dolly Wheel Mount Bracket	1	F241	.375 x .875 x .10 Washer		6
		(Includes Item # 11)		F265	1/2-20 x 1-1/2 Hex Bolt		3
25	6715	Roller Wheel (3-7/8)	1	F276	5/8-11 Jam Nut		3
26	8745-15	Axle Spacer Tube	1	F277	3/16 x 5/8 Woodruff Key (#605)		2
27	5229	Extension Spring (1/2 x 2-1/4)	1	F339	5/16-18 x 3/4 Self-Tapping Bolt		2
28	8775	Hitch Pin (#219)	4		(Refer to Special Instructions , Item # 4)		
29	8727	Washer Shim, 13/16 ID x 1/4	4	Special Instructions			
30	8051	Right Angle Gearbox	1	1	Apply Loctite® Threadlocker # 242 (Blue) to Item # F076		
		(Includes Item # 11)			(Used at Item # 5) prior to assembly. Torque to 400 in-lb. (45.2 N·m).		
31	8720-30	Anti-Scalp Wheel Mount	3	2	Apply Loctite® Threadlocker # 242 (Blue) to Item # F114		
32	8745-30	Axle Spacer Tube	3		(Two places, used at Item # 17) prior to assembly. Torque to 190 in-lb. (21.5 N·m).		
33	6715-1	Roller Wheel (5")	3	3	Apply Loctite® Threadlocker # 242 (Blue) to Item # F226		
34	5705-3	Blade, 22" (RH Rotation)	3		(8 places, used at Item # 20) prior to assembly. Torque to 18 ft-lb. (24.4 N·m).		
	5705-13	Blade Set (62" SD)	***	4	Torque Item # F339 (Two places, used at Item # 20) to 200 in-lb. (22.6 N·m). DO NOT apply Loctite®.		
35	8739	Spindle Shield	3	*	Use of this Deck on GHS Tractors requires installation of P/N 5595-2 (Blower Intake Cover). Contact your Walker dealer.		
36	8052	Blade Spindle (Includes Item # 11)	3	**	Order this part to use the splined deck PTO shaft with Model MT, MD and MC-Twin (S/N 98-33662 and on) if tractor is not equipped (tractors S/N prior to S/N 99-37748).		
37	8728	Machine Bushing (1/2 x 1-1/2)	3	***	Service Part Only		
38	8790	Rubber Cushion Strip	3	♦	Average number used per assembly. Adjust as required.		
39	8701-1	62" Deck Housing, SD	1	NOTE: Decals for this assembly are not shown here. Refer to DECK DECALS & WALKER TOUCH-UP PAINT (Page 2) for Decal listing and placement information.			
		(Includes Items # 12 & 38)					
40	8707	Skid Bar (52/62)	1				
41	8709	Discharge Shield	1				
42	NS	Deck Serial Number Plate	1				
43	5052-3	1.375 x .750 x .187 Washer, Oblong	12				

Use only genuine **Walker** replacement parts.

Effective Date 07-24-98

DSD62 DECK ASSEMBLY (P/N 8702-1)



DECK WELDMENT REPLACEMENT PARTS

ITEM NO.	PART NO.	DESCRIPTION	LOCATION	NO. REQ'D
NOTE: All parts listed in this section are for Weld-On Repair; Cutting, Grinding, and Welding are required to replace these parts.				
DSD52 & DSD62 Weldments				
1	8733-3	Rim Rod, RH Rear (20-3/4)	DSD52	1
	8751-2	Rim Rod, RH Rear (28-3/8)	DSD62	1
2	8760-2	Rear Deck Pin (3/4 x 5-3/4)	DSD52 and DSD62	2
3	8733-63	Rim Rod, LH Rear (28-3/4)	DSD52	1
	8751-3	Rim Rod, LH Rear (34-3/8)	DSD62	1
4	8733-5	Rim Rod, LH Front (22-7/8)	DSD52	1
	8751-4	Rim Rod, LH Front (28-5/16)	DSD62	1
5	8760-1	Front Deck Pin (3/4 x 7-5/8)	DSD52 and DSD62	2
6	8733-61	Rim Rod, Front Center (26-5/8)	DSD52	1
	8751-5	Rim Rod, Front Center (29-1/4)	DSD62	1
7	8733-10	Rim Rod, RH Front (16-1/4)	DSD52	1
	8751-6	Rim Rod, RH Front (19-1/4)	DSD62	1
DSD54 Weldments				
8	6752-1	Deck Cap Strip, 54SD (Rear, 33-5/16)*	DSD54	1
9	5760-4	Rear Deck Pin (5/8 x 5-3/8)**	All Decks Except DSD52 & DSD62	2
	5760-2	Rear Deck Pin (1/2 x 5-3/8)***	All Decks Except DSD52 & DSD62	2
10	6752-3	Deck Cap Strip, 54SD (LH, 39")*	DSD54	1
	6705-7	Deck Cap Strip (LH, 32")♦	DSD54	1
11	5760-3	Front Deck Pin (5/8 x 5-3/4)**	All Decks Except DSD52 & DSD62	2
	5760-1	Front Deck Pin (1/2 x 5-3/4)***	All Decks Except DSD52 & DSD62	2
12	6752-2	Deck Cap Strip, 54SD (Front, 42")*	DSD54	2
DGHS Weldments				
9	5760-4	Rear Deck Pin (5/8 x 5-3/8)**	All Decks Except DSD52 & DSD62	2
	5760-2	Rear Deck Pin (1/2 x 5-3/8)***	All Decks Except DSD52 & DSD62	2
11	5760-3	Front Deck Pin (5/8 x 5-3/4)**	All Decks Except DSD52 & DSD62	2
	5760-1	Front Deck Pin (1/2 x 5-3/4)***	All Decks Except DSD52 & DSD62	2
13	5751-3	Deck Cap Strip, 36" GHS (LH)	DGHS36	1
	5751-1	Deck Cap Strip, 42" GHS (LH)	DGHS42	1
	7701-10	Edge Stiffener, 42", Side♦♦	DGHS48	2
	7751-1	Deck Cap Strip, 49" (LH)♦♦♦	DGHS48	1
	7751-3	Deck Cap Strip, 6-3/8 (LH)♦♦♦	DGHS48	1
14	7701-11	Edge Stiffener, 21-7/8, Front♦♦	DGHS48	1
15	5751-4	Deck Cap Strip, 36" GHS (RH)	DGHS36	1
	5751-2	Deck Cap Strip, 42" GHS (RH)	DGHS42	1
	7751-2	Deck Cap Strip, 49" (RH)♦♦♦	DGHS48	1
	7751-4	Deck Cap Strip, 6-3/8 (RH)♦♦♦	DGHS48	1
DSD & DML Weldments				
9	5760-4	Rear Deck Pin (5/8 x 5-3/8)**	All Decks Except DSD52 & DSD62	2
	5760-2	Rear Deck Pin (1/2 x 5-3/8)***	All Decks Except DSD52 & DSD62	2
11	5760-3	Front Deck Pin (5/8 x 5-3/4)**	All Decks Except DSD52 & DSD62	2
	5760-1	Front Deck Pin (1/2 x 5-3/4)***	All Decks Except DSD52 & DSD62	2
16	5702-6	Deck Cap Strip, 47"	DSD36	1
	5751-5	Deck Cap Strip, 42" SD (LH, 47")	DSD42	1
	5793-14	Rolled Edge DML42 (37-3/8)	DML42	2
	5793-15	Straight Edge DML42 (18-9/16)	DML 42	2
17	5751-6	Deck Cap Strip, 42" SD (Front, 3-9/16)	DSD42	1

* Used only on models manufactured in 1992 and later.

** Used only on models manufactured in 1987 and later.

*** Used only on models manufactured 1980-1986.

♦ Used only on models manufactured 1987-1992.

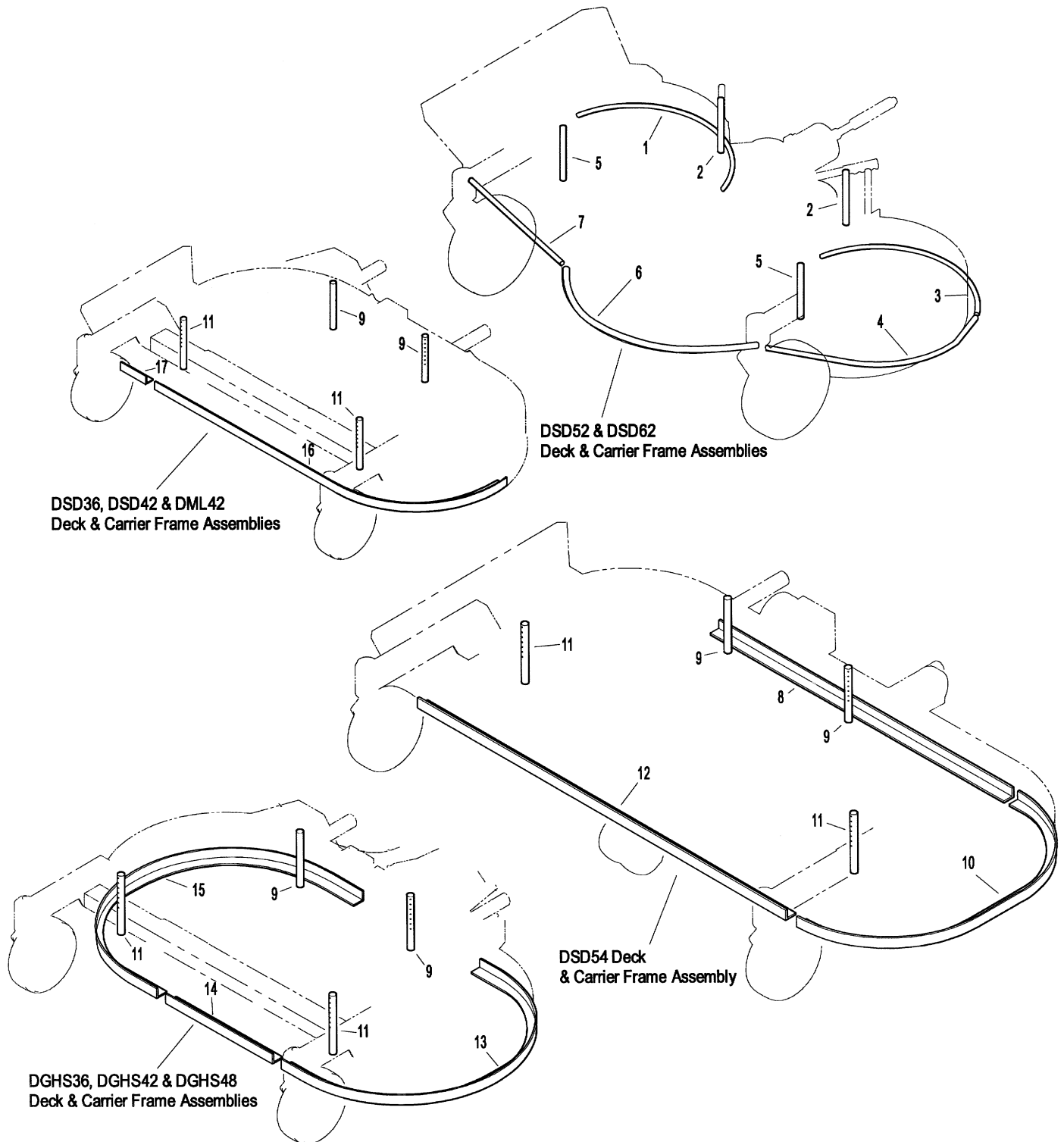
♦♦ Used only on models with Serial Number D7-26482 and later.

♦♦♦ Used only on models prior to Serial Number D7-26482.

Use only genuine **Walker** replacement parts.

Effective Date 07-24-98

DECK WELDMENT REPLACEMENT PARTS



LUBRICATION POINTS

ITEM NO.	LOCATION	LUBRICATION TYPE	NO. PLACES
----------	----------	------------------	------------

GHS Tilt-Up Assemblies (36", 42" & 48")*

1	Deck Caster Wheel Fork Pivot	Grease	2
2	Blade Drive Gearbox	Oil**	2
3	Tee Gearbox, Deck	Oil**	1
4	Deck Caster Wheel Bearing	Grease	2
5	PTO Shaft Guard Hinge	Oil	1
6	Universal Joint Shaft Assembly	Grease***	1
7	Pivot Assembly, Tilt-Up Deck	Grease	4
8	Deck Support Arm Socket	Grease	2
9	Deck Roller Wheel	Oil	2
10	Discharge Chute Hinge	Oil	1

ITEM NO.	LOCATION	LUBRICATION TYPE	NO. PLACES
----------	----------	------------------	------------

SD Non-Tilting Assemblies (52" & 62")*

4	Deck Caster Wheel Bearing	Grease	2
6	Universal Joint Shaft Assembly	Grease***	1
8	Deck Support Arm Socket	Grease	2
11	Discharge Shield Hinge	Oil	2
12	Anti-Scalp Roller (Used on 52", 54" and 62" Decks)	Oil	3
13	Blade Spindle	Grease	3
14	Right Angle Gearbox	Oil♦	1
15	Dolly Wheel Retract Lever and Linkage	Oil	3
16	Dolly Wheel Pivot	Grease	1
17	Idler Arm, 2-Hole	Grease	1

* SD Tilt-Up Assemblies are not shown here. Refer to Items # 1-9 in **GHS Tilt-Up Assemblies** list, and Items # 11 & 12 in **SD Non-Tilting Assemblies** list.

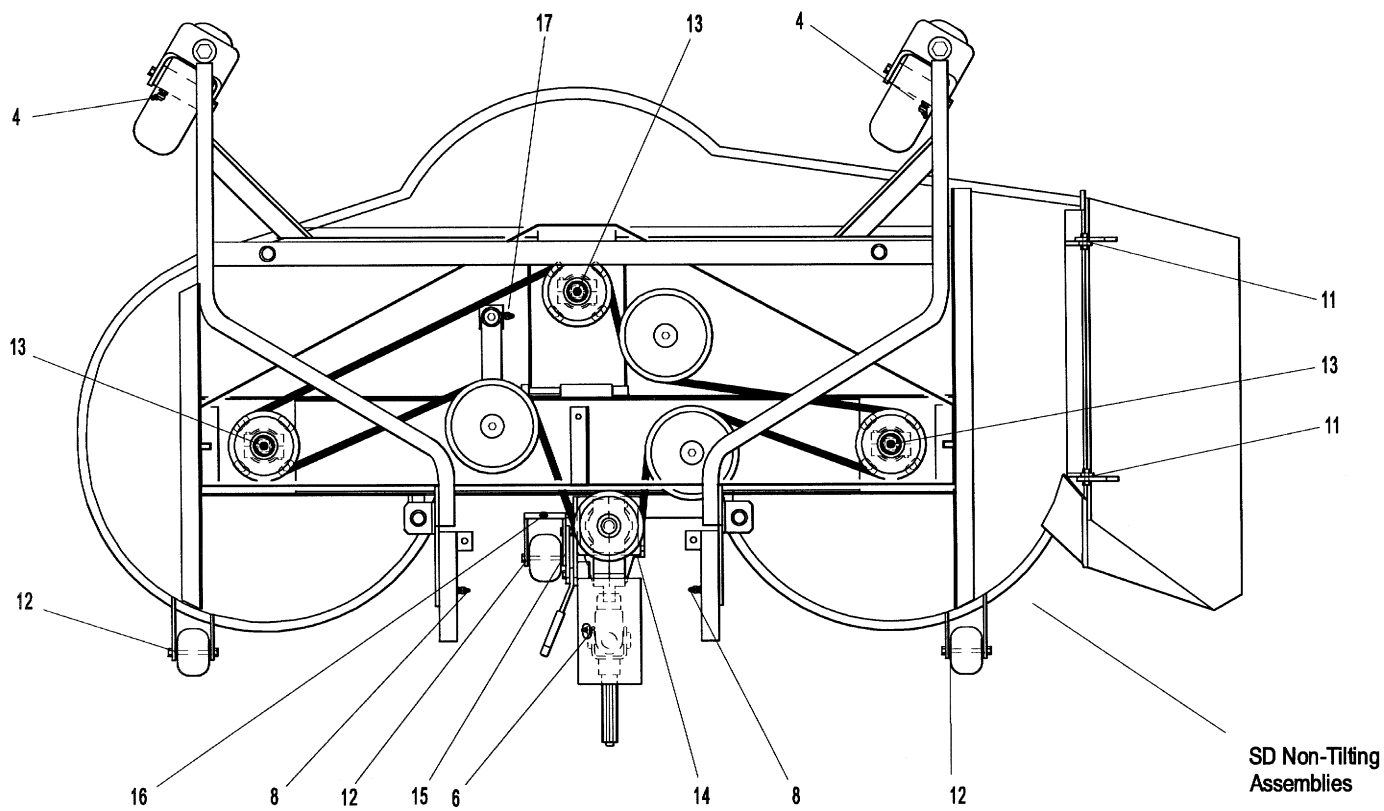
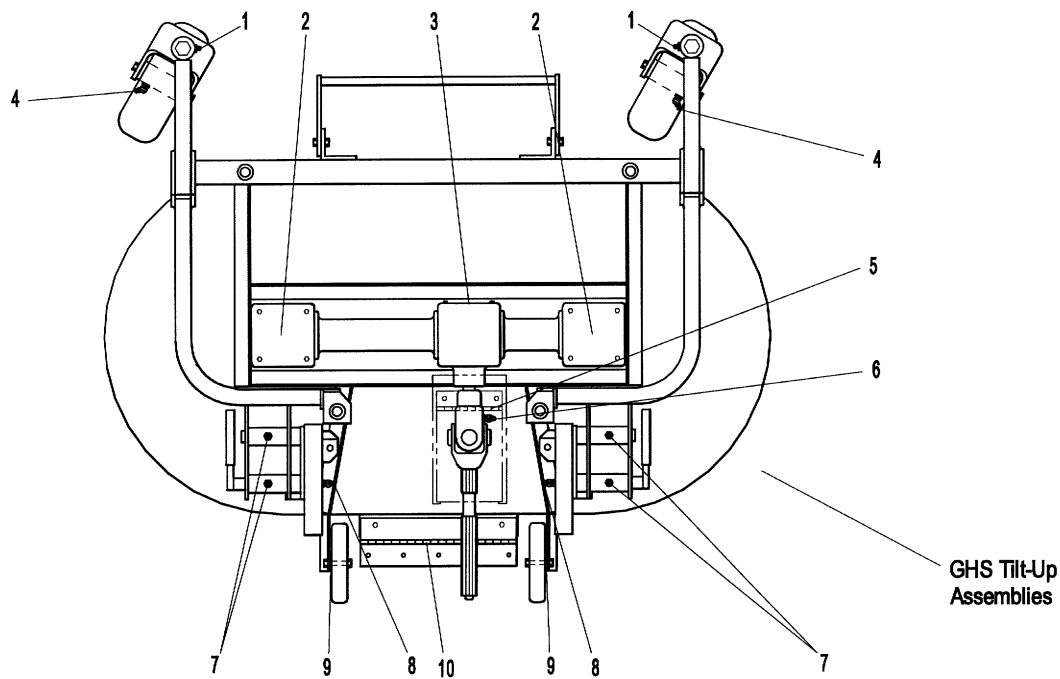
** Gearboxes are permanently lubricated and sealed requiring no scheduled lubrication. Oil level should be checked only when an oil leak is noted.

*** Grease every eight (8) hours.

♦ Check oil level every 100 hours. Refer to either MD or MT **OWNER'S MANUAL** for Lubrication Instructions.

NOTE: Exact location of some Lubrication Points may vary slightly from those shown in the illustration. Decks shown in the illustration are for reference only; for further information on location of parts not shown here, refer to the parts listings for individual Carrier Frames and Deck Assemblies.

LUBRICATION POINTS



OPERATOR'S NOTES

LIMITED WARRANTY FOR WALKER COMMERCIAL RIDER MOWER

1. WHAT THIS WARRANTY COVERS, AND FOR HOW LONG:

Walker Manufacturing company will, at its option, repair or replace, without charge, any part covered by this warranty which is found to be defective in material and/or workmanship within one (1) year* after date of sale to the original retail purchaser unless the product is used for rental purposes, in which case this warranty is limited to ninety (90) days. At Walker's request, customer will make the defective part available for inspection by Walker and/or return the defective part to Walker, transportation charges prepaid. All parts and components of the Walker Mower are covered by this warranty **except** the following components which are warranted separately by their respective manufacturers:

Kohler Engine
Kubota Engine
Kawasaki Engine
Eaton Hydraulic Transmission
Peerless Gearboxes
Battery
Tires

The available warranties covering these items are furnished with each mower. Walker does not assume any warranty obligation, liability or modification for these items, which are covered exclusively by the stated warranty of the respective manufacturers noted above.

* An extended three (3) year warranty is offered on the Walker P/N 6200 Gear Axle Assembly.

2. WHAT THIS WARRANTY DOES NOT COVER:

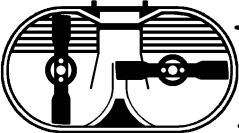
- A. This warranty does not cover defects caused by depreciation or damage caused by normal wear, accidents, improper maintenance, improper use or abuse of the product, alterations, or failure to follow the instructions contained in the Owner's Manual for operation and maintenance.
- B. The customer shall pay any charges for making service calls and/or for transporting the mower to and from the place where the inspection and/or warranty work is performed.

3. HOW TO OBTAIN SERVICE UNDER THIS WARRANTY:

Warranty service can be arranged by contacting the dealer where you purchased the mower or by contacting Walker Manufacturing Company, 5925 East Harmony Road, Ft. Collins, CO 80528. Proof of the date of purchase may be required to verify warranty coverage.

4. WARRANTY LIMITATION:

- A. **THERE IS NO OTHER EXPRESS WARRANTY. ANY WARRANTY THAT MAY BE IMPLIED FROM THIS PURCHASE INCLUDING MERCHANTABILITY AND FITNESS FOR A PARTICULAR PURPOSE IS HEREBY LIMITED TO THE DURATION OF THIS WARRANTY AND TO THE EXTENT PERMITTED BY LAW ANY AND ALL IMPLIED WARRANTIES ARE EXCLUDED.** Some states do not allow limitations on how long an implied warranty lasts, so the above limitations may not apply to you.
- B. **WALKER WILL NOT BE LIABLE FOR ANY INCIDENTAL, CONSEQUENTIAL, OR SPECIAL DAMAGES AND/OR EXPENSES IN CONNECTION WITH THE PURCHASE OR USE OF THE MOWER.** Some states do not allow the exclusion or limitation of incidental or consequential damages, so the above limitation(s) or exclusion(s) may not apply to you.
- C. Only the warranty expressed in this limited warranty shall apply and no dealer, distributor, or individual is authorized to amend, modify, or extend this warranty in any way. Accordingly, additional statements such as dealer advertising or presentations, whether oral or written, do not constitute warranties by Walker, and should not be relied upon.
- D. This warranty gives you specific legal rights, and you may also have other rights which vary from state to state.

WALKER  MOWERS™

WALKER MFG. CO. • 5925 E. HARMONY ROAD, FORT COLLINS, CO 80528 • (970) 221-5614
FORM NO. 091598 PRINTED IN USA ©1998 WALKER MFG. CO