



# WALKER

## Illustrated Parts Manual

Mulching Deck and Carrier Frame Assemblies

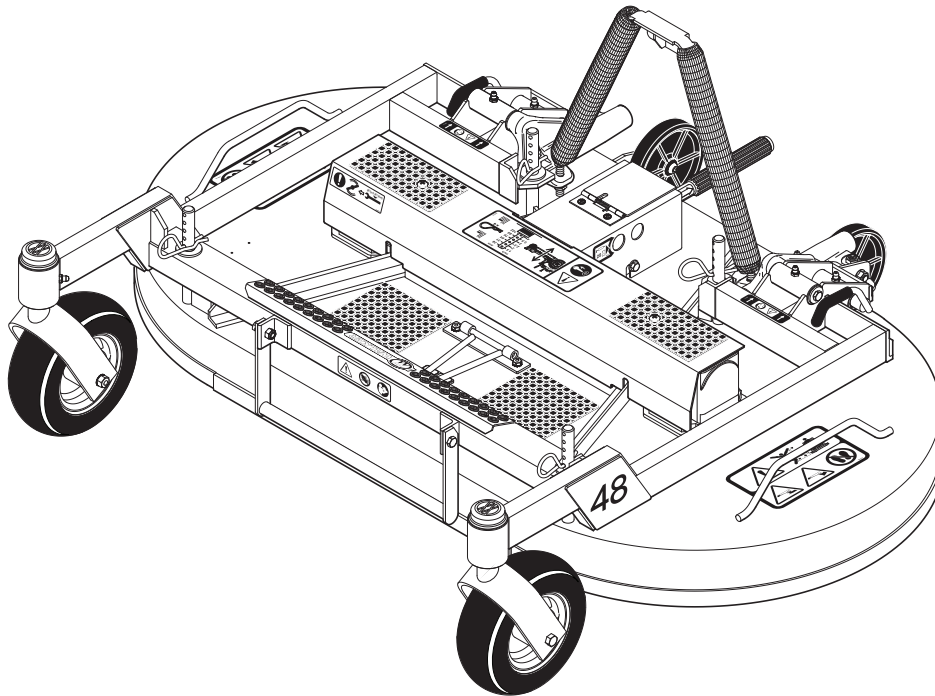
DM36

DM42

DM42A

DM42B

DM48



Effective Date: 08.31.18  
P/N 5000-44

# KEY TO ABBREVIATIONS USED IN THIS MANUAL

<i>Abbreviation</i>	<i>What it Represents</i>
° (Dimension) .....	Degrees (Angle)
" (Dimension) .....	inches
(-) .....	Negative (Polarity)
(+) .....	Positive (Polarity)
AT .....	All-Terrain
CCW .....	Counter-clockwise
Conn. ....	Connector
CW .....	Clockwise
D .....	Diameter
DC .....	Deck, Collection (number refers to size in inches)
DM .....	Deck, Mulching (number refers to size in inches)
DR .....	Deck, Rear Discharge (number refers to size in inches)
DS .....	Deck, Side Discharge (number refers to size in inches)
DU .....	Garlock (Bearing)
ESNA (Fastener) .....	Nylon Insert Locknut
FSC .....	Forward Speed Control
GA .....	Gauge
gal. ....	gallon
GHS .....	Grass Handling System
GR (Fastener) .....	Grade
HD .....	Heavy Duty
HP .....	Horse Power
ID .....	Identification or Inside Diameter
L .....	Length
LH .....	Left Hand (orientated with operator on seat)
LP .....	Low Profile
mm (Dimension) .....	millimeters
MS (Fastener) .....	Machine Screw
NS (as part number) .....	Item is not sold by Walker Manufacturing
OD .....	Outside Diameter
oz. ....	ounce
PFH (Fastener) .....	Phillips Flat Head
P/N .....	Part Number
PPH (Fastener) .....	Phillips Pan Head
PTH (Fastener) .....	Phillips Truss Head
PTO .....	Power Take-Off
QKS .....	Quick Slide
qt. ....	quart
RH .....	Right Hand (orientated with operator on seat)
SAE (Fastener) .....	Society of Automotive Engineers
SBH (Fastener) .....	Socket Button Head (Bolt)
SD .....	Side Discharge
SFH (Fastener) .....	Slotted Flat Head
SHC (Fastener) .....	Socket Head Cap
SHL (Fastener) .....	Shoulder (Bolt)
SM (Fastener) .....	Sheet Metal (Screw)
S/N .....	Serial Number
Spg. ....	Spring
SQH (Fastener) .....	Square Head
SS (Fastener) .....	Stainless Steel
ST (Fastener) .....	Self-Tapping (Screw)
Term. ....	Terminal
V .....	Volts

NOTE: In some instances, combinations of abbreviations may be used (e.g. PPHMS - Phillips Pan Head Machine Screw).

# ILLUSTRATED PARTS LIST

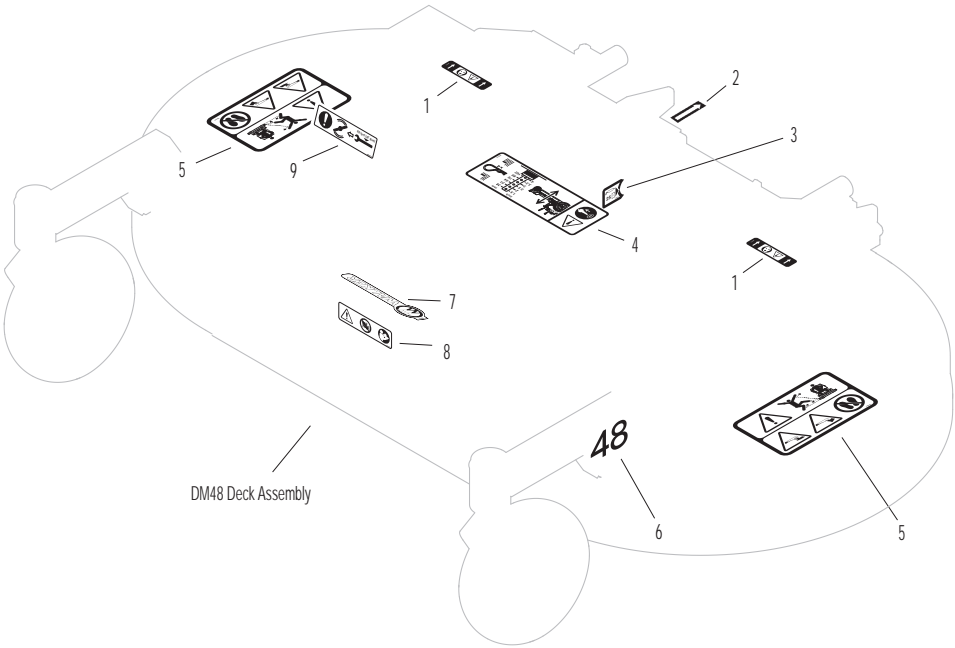
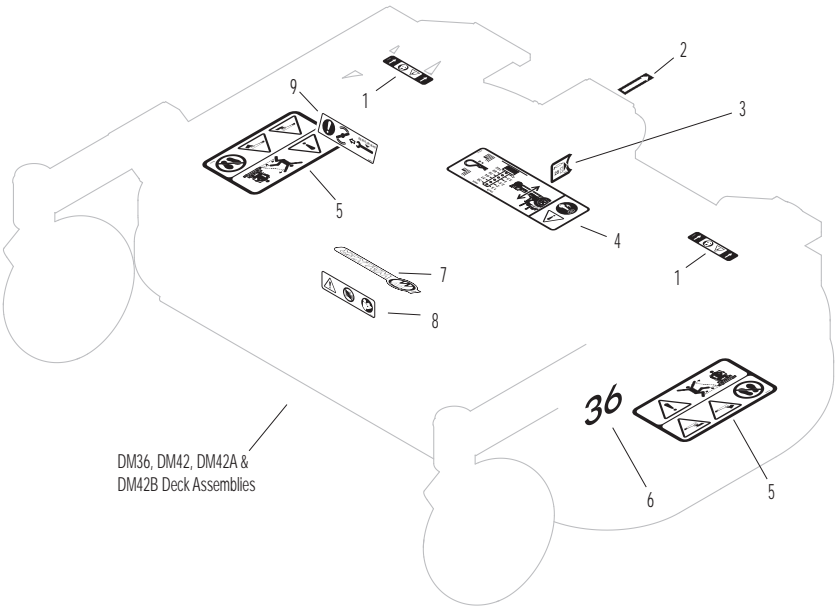
<i>Section of Deck Covered</i>	<i>Page</i>	<i>Section of Deck Covered</i>	<i>Page</i>
<b>Decals &amp; Paint</b>		<b>Maintenance</b>	
36", 42" & 48" Deck Decals / Touch-Up Paint .....	2	Lubrication Points .....	20
		H24d, H25, H27i, H37i And H38i	
<b>Deck and Carrier Frame Assemblies</b>		Deck Arm Adapter Kit .....	21
36 Inch Complete Carrier Frame Assembly .....	4	Blade Usage Chart .....	22
DM36 Deck Assembly .....	6	Fastener Loctite® Application &	
42 Inch Complete Carrier Frame Assembly .....	8	Torque Instructions .....	23
DM42 Deck Assembly .....	10	Maintenance And Service Record Sheet .....	24
48 Inch Complete Carrier Frame Assembly .....	12	Deck / Tractor Compatibility Chart .....	24
DM42A Deck Assembly .....	14		
DM42B Deck Assembly .....	16	<b>Warranty</b>	
DM48 Deck Assembly .....	18	Limited Warranty .....	25

## 36", 42" & 48" DECK DECALS / TOUCH-UP PAINT

ITEM NO.	PART NO.	DESCRIPTION	LOCATION	NO. REQ'D
<b>DM36, DM42, DM42A &amp; DM42B Deck Decals</b>				
1	8600-15	Caution, Pivot Joint	Carrier Frame	2
2	6875	PTO Alignment Arrow	Universal Joint Shaft Assembly	1
3	5846-1	Grease Fitting	PTO Shaft Guard	1
4	8600-39	Cutting Height Adjustment	Gearbox Cover	1
5	8600-28	Danger, Rotating Blades	Deck Housing (one on each end)	2
6	8821-14	Decal (36")	Carrier Frame	1
	8821-15	Decal (42")	Carrier Frame	1
	8821-16	Decal (48")	Carrier Frame	1
7	5809-2	Decal, Walker	Carrier Frame	1
8	8600-14	Danger, Tilt-Up	Carrier Frame, Front	1
9	8600-9	Blade Mounting Torque	Gearbox Cover	1
<b>DM48 Deck Decals</b>				
1	8600-15	Caution, Pivot Joint	Carrier Frame	2
2	6875	PTO Alignment Arrow	Universal Joint Shaft Assembly	1
3	5846-1	Grease Fitting	PTO Shaft Guard	1
4	8600-39	Cutting Height Adjustment	Gearbox Cover	1
5	8600-28	Danger, Rotating Blades	Deck Housing (one on each end)	2
6	8821-16	Decal (48")	Carrier Frame	1
7	5809-2	Decal, Walker	Carrier Frame	1
8	8600-14	Danger, Tilt-Up	Carrier Frame, Front	1
9	8600-9	Blade Mounting Torque	Gearbox Cover	1
<b>Touch-Up Paint</b>				
10	5866	Touch-Up Paint, Yellow (12 oz. Aerosol)		

**NOTE:** All parts requiring decals are shipped with decals applied.

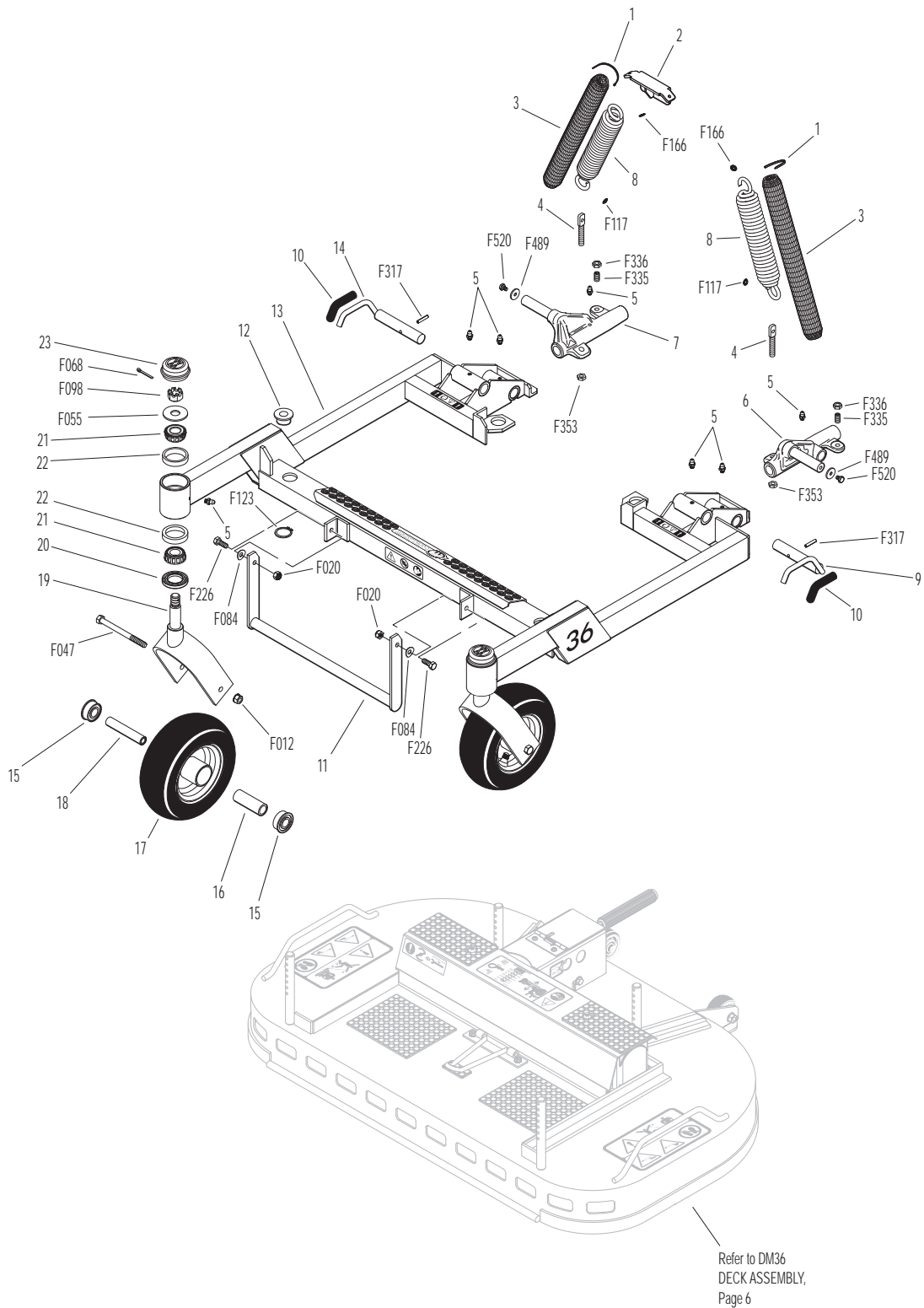
36", 42" & 48" DECK DECALS / TOUCH-UP PAINT



# 36 INCH COMPLETE CARRIER FRAME ASSEMBLY

ITEM NO.	PART NO.	DESCRIPTION	NO. REQ'D	ITEM NO.	PART NO.	DESCRIPTION	NO. REQ'D
<b>Spring and Pivot Mount Components</b>				<b>Fasteners</b>			
1	5975-3	Cable Tie (50# x 7")	4	F012	3/8-16 Keps Nut		2
2	5744-1	Spring Clip Bracket	1	F020	5/16-18 ESNA Nut		2
3	5743-1	Spring Cover	2	F047	3/8-16 x 4-1/2 Hex Bolt		2
4	5743-4	Eyebolt (3/8-16 x 2-3/4)	2	F055	5/8 SAE Washer		2
5	5830	Grease Fitting	8	F068	1/8 x 1 Cotter Pin		2
6	8667-3	Pivot Mount Assembly, LH/Adj. (Includes Items # 5, F353, F489 & F520)	*	F084	5/16 Wave Spring Washer		2
7	8667-4	Pivot Mount Assembly, RH/Adj. (Includes Items # 5, F353, F489 & F520)	*	F098	5/8-18 Slotted Hex Nut		2
8	5743-8	Extension Spring (1-1/2 x 7-3/4) (Includes Items # 1, F117 & F166)	2	F117	Retainer Ring		2
<b>Carrier Frame Components</b>				F123	1" External Snap Ring		4
9	8674-11	Lever, Deck Lock, LH	1	F166	Retainer Ring		2
10	7406-1	Handle Grip (Red)	2	F226	5/16-18 x 7/8 Hex Bolt		2
11	8669	Lift Handle	1	F317	3/16 x 1 Split Spring Pin		2
12	5740-2	Deck Pin Bushing (5/8)	4	F335	3/8-16 x 7/8 Set Screw, SS		2
13	5708-8	DML36 Carrier Frame	1	F336	3/8-16 Jam Nut		2
	5708-7	36 Carrier Frame W/Forks (Includes Items # 19-21, 23, F055, F068 & F098)	*	F353	3/8-16 ESNA LP Nut		2
14	8674-10	Lever, Deck Lock, RH	1	F489	Washer 1/4 x 7/8 x .090		2
<b>Caster Wheel Components</b>				F520	1/4-28 x 3/8 Hex Bolt		2
15	5714-8	Bearing, Caster Wheel	4	* Service Part Only			
16	5714-9	Spacer Tube	2	** May be ordered as a kit for dealer installation. Contact your Walker dealer.			
17	5715-18	Caster Wheel & Tire/No-Flat (8 x 3.00-4) (Includes Items # 15, 16 & 18)	2				
	5715-16	Tire, Caster Wheel/No-Flat (8 x 3.00-4)	*				
	5715-17	Caster Wheel, Pneumatic (8 x 3.00-4) (Includes Items # 15, 16 & 18)	**				
	5715-15	Caster Wheel Tire, Pneumatic (8 x 3.00-4)	**				
	5715-9	Tire Tube, Pneumatic (2.80/2.50-4)	**				
18	5714-6	Axle Spacer Tube	2				
19	5770-1	Caster Wheel Fork	2				
20	8768-1	Seal (1-3/4 x 1-1/8)	2				
21	8037	Bearing Cone (3/4 ID)	4				
22	8769-1	Bearing Cup (1-3/4 x 1-7/16)	4				
23	8769-10	Dust Cap, Deck Caster	2				

# 36 INCH COMPLETE CARRIER FRAME ASSEMBLY



# DM36 DECK ASSEMBLY

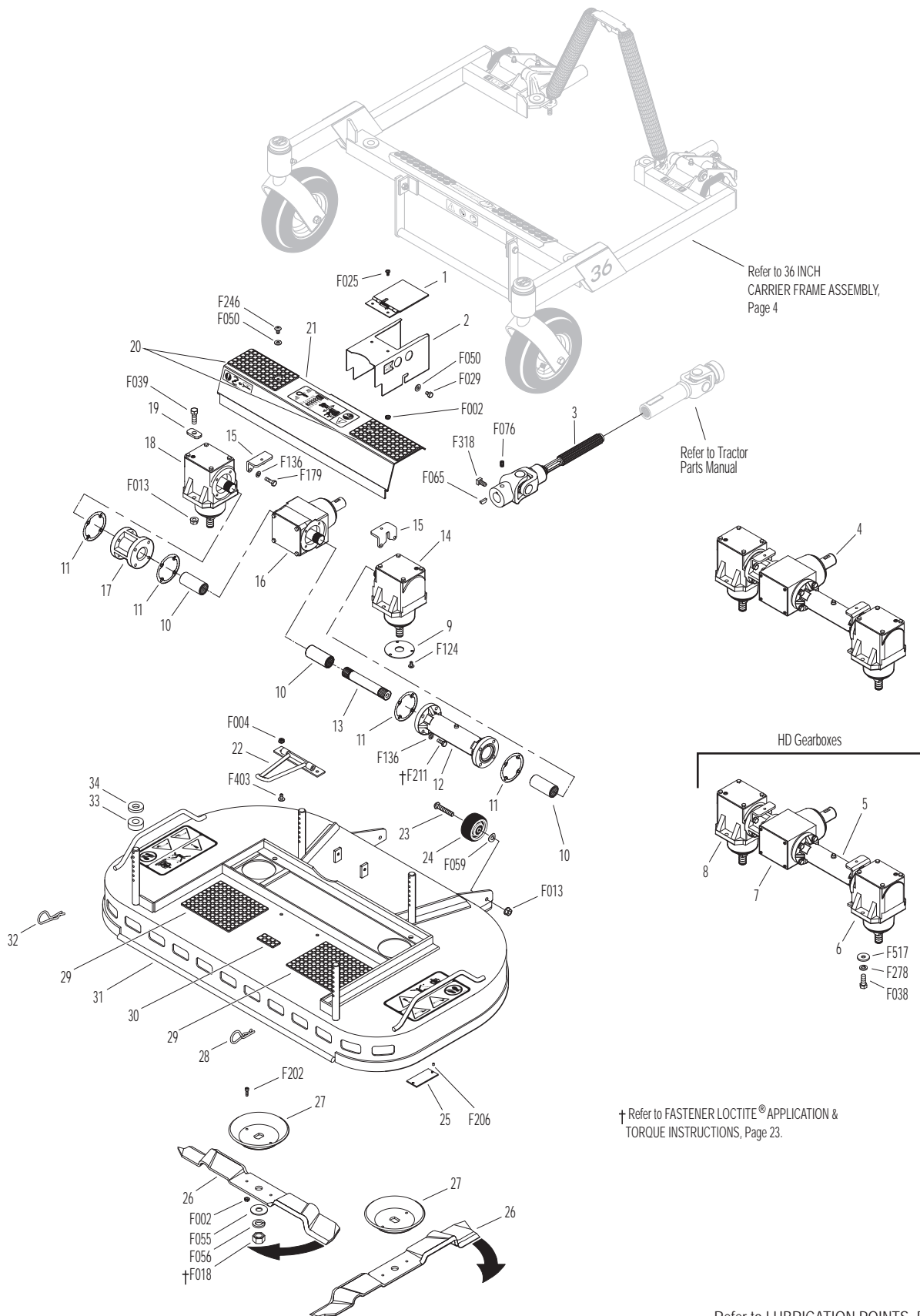
## INCL. OPTIONAL HD GEARBOXES

ITEM NO.	PART NO.	DESCRIPTION	NO. REQ'D	ITEM NO.	PART NO.	DESCRIPTION	NO. REQ'D
<b>Gearbox and Drive Components</b>				30	8788-1	Rubber Mat (1 x 2)	1
1	8618-1	Cover, PTO Shaft Guard	1	31	5702-7	DML36 Deck Housing (Includes Items # 29 & 30)	1
2	8619-2	PTO Shaft Guard	1	32	7775-2	Hitch Pin, RH (Gold) #6	2
	8618-3	PTO Shaft Guard Assembly (Includes Items # 1, 2, F002 & F025)	*	33	7434-1	Washer 1-3/8 x 5/8-1/2 Thick	4
3	5285-5	U-Joint Shaft Assembly (90 Degree) Spline, Keyed (Includes Items # F065, F076 & F318)	1	34	5727-1	Washer Shim (5/8 ID)	4
4	6704-22	DM36 Gearbox and Tube Assembly (Includes Items # 9-18, F136, F179 & F211)	1	<b>Fasteners</b>			
5	6711-2	DM36 Gearbox and Tube Assembly, HD (Includes Items # 6-8, 10-13, 15, 17, F136, F179 & F211)	**	F002	10-24 Keps Nut		6
6	5052-16	HD Gearbox (1:2:1, 1.762) CCW-CCW	**	F004	1/4-20 Keps Nut		2
7	5051-5	HD Tee Gearbox (1:1) CW-CW & CCW	**	F013	3/8-16 Whiz Locknut		6
8	5053-16	HD Gearbox (1:2:1, 1.1762) CW-CCW	**	F018	5/8-18 Hex Nut		2
9	5706-4	Seal Protector Plate	2 <sup>Δ</sup>	F025	10-24 x 3/8 PPHMS		2
10	6054	Spline Coupling	3	F029	1/4-20 x 1/2 Hex Bolt		2
11	P007	Gasket, Cap (Peerless #788030)	4	F038	3/8-16 x 1 Hex Bolt		4***
12	5065	Connector Tube (7-11/16)	1	F039	3/8-16 x 1-1/4 Hex Bolt		4
13	6733-4	Connecting Shaft (5-5/16)	1	F050	1/4 SAE Washer		4
14	5052-4	Gearbox (LH 1.2:1)	1	F055	5/8 SAE Washer		2
15	5704-1	Gearbox Cover Support	2	F056	5/8 Split Lock Washer		2
16	5051-2	Tee Gearbox, Keyed (7/8" Dia. Shaft)	1	F059	3/8 Wave Spring Washer		2
17	5060	Connector Tube (2-5/16)	1	F065	3/16 x 3/4 Woodruff Key (#606)		1
18	5053-4	Gearbox (RH 1.2:1)	1	F076	3/8-16 x 5/8 SQH Set Screw		1
19	5052-3	1.375 x .750 x .187 Washer	4 <sup>Δ</sup>	F124	10-32 x 3/8 Tapitite MS		6
20	5747-11	Rubber Mat (3 x 6)	2	F136	AN960C416L Washer		16
21	5746-6	36" Gearbox Cover (Includes Item # 20)	1	F179	1/4-20 x 1 Hex Bolt		4
<b>Deck Housing Components</b>				F202	10-24 x 5/8 SHC Screw, GR5 SS		4
22	8670	Tilt-Up Hook	1	F206	#2 x 3/16 Drive Pin		2
23	8490-1	Roller Wheel Axle Bolt	2	F211	1/4-20 x 7/8 Hex Bolt		12
24	9772	Roller Wheel Assembly (2-1/2) (Includes Item # F059)	2	F246	1/4-20 x 1/2 PTHMS		2
25	NS	Deck Serial Number Plate	1	F278	3/8 Split Lock Washer		4***
26	5705-23	Blade 19" Mulch, Special	2	F318	3/8-16 x 3/4 SQH Set Screw		1
27	5706	Blade Hub & Trash Guard	2	F403	1/4-20 x 1/2 PTHMS, SS		2
28	7775-1	Hitch Pin, LH (Silver) #6	2	F517	Washer 3/8 x 1-1/8 x 1/8		4***
29	8735-10	Rubber Mat (5 x 6)	2	* Service Part Only			
				** Item(s) used on the HD version of standard gearboxes. The HD cast iron gearboxes are interchangeable with Standard aluminum gearboxes.			
				*** Hardware used on HD gearbox configuration.			
				Δ Used on standard aluminum gearbox configuration.			



# DM36 DECK ASSEMBLY

## INCL. OPTIONAL HD GEARBOXES



## 42 INCH COMPLETE CARRIER FRAME ASSEMBLY

ITEM NO.	PART NO.	DESCRIPTION	NO. REQ'D
-------------	-------------	-------------	--------------

### Spring and Pivot Mount Components

1	5975-3	Cable Tie (50# x 7")	4
2	5744-1	Spring Clip Bracket	1
3	5743-1	Spring Cover	2
4	5743-4	Eyebolt (3/8-16 x 2-3/4)	2
5	5830	Grease Fitting	8
6	8667-3	Pivot Mount Assembly, LH/Adj. (Includes Items # 5, F353, F489 & F520)	*
7	8667-4	Pivot Mount Assembly, RH/Adj. (Includes Items # 5, F353, F489 & F520)	*
8	5743-8	Extension Spring (1-1/2 x 7-3/4) (Includes Items # 1, F117 & F166)	2

### Carrier Frame Components

9	8674-11	Lever, Deck Lock, LH	1
10	7406-1	Handle Grip (Red)	2
11	8669	Lift Handle	1
12	5740-2	Deck Pin Bushing (5/8)	4
13	8660-13	42" Carrier Frame (Less Pivots)	1
	8660-12	42" Carrier Frame W/Forks (Less Pivots) (Includes Items # 19-21, 23, F055, F068 & F098)	*
14	8674-10	Lever, Deck Lock, RH	1

### Caster Wheel Components

15	5714-8	Bearing, Caster Wheel	4
16	5714-9	Spacer Tube	2
17	5715-18	Caster Wheel & Tire/No-Flat (8 x 3.00-4) (Includes Items # 15, 16 & 18)	2
	5715-16	Tire, Caster Wheel/No-Flat (8 x 3.00-4)	*
	5715-17	Caster Wheel, Pneumatic (8 x 3.00-4) (Includes Items # 15, 16 & 18)	**
	5715-15	Caster Wheel Tire, Pneumatic (8 x 3.00-4)	**
	5715-9	Tire Tube, Pneumatic (2.80/2.50-4)	**
18	5714-6	Axle Spacer Tube	2
19	5770-1	Caster Wheel Fork	2
20	8768-1	Seal (1-3/4 x 1-1/8)	2
21	8037	Bearing Cone (3/4 ID)	4
22	8769-1	Bearing Cup (1-3/4 x 1-7/16)	4
23	8769-10	Dust Cap, Deck Caster	2

ITEM NO.	PART NO.	DESCRIPTION	NO. REQ'D
-------------	-------------	-------------	--------------

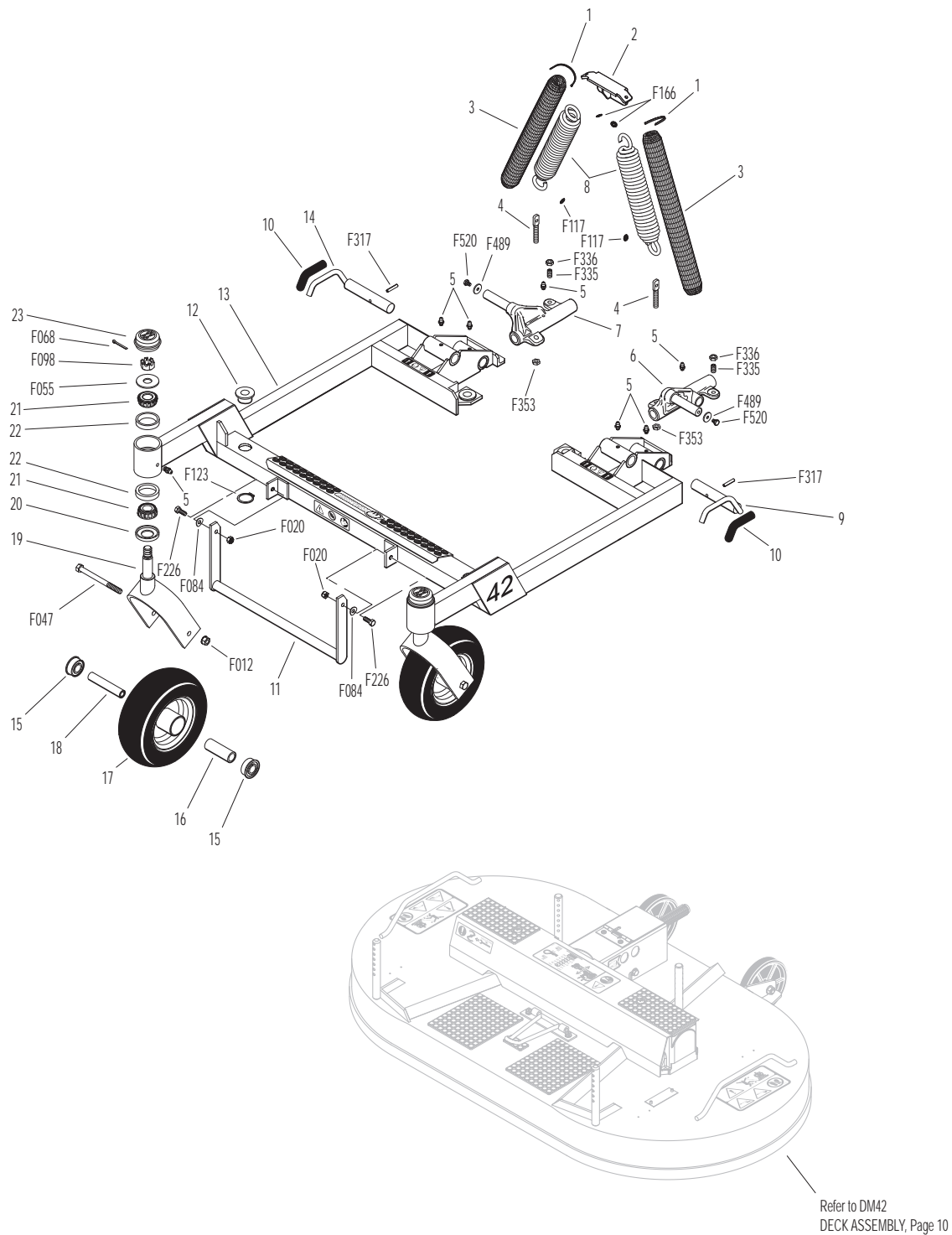
### Fasteners

F012	3/8-16 Keps Nut	2
F020	5/16-18 ESNA Nut	2
F047	3/8-16 x 4-1/2 Hex Bolt	2
F055	5/8 SAE Washer	2
F068	1/8 x 1 Cotter Pin	2
F084	5/16 Wave Spring Washer	2
F098	5/8-18 Slotted Hex Nut	2
F117	Retainer Ring	2
F123	1" External Snap Ring	4
F166	Retainer Ring	2
F226	5/16-18 x 7/8 Hex Bolt	2
F317	3/16 x 1 Split Spring Pin	2
F335	3/8-16 x 7/8 Set Screw, SS	2
F336	3/8-16 Jam Nut	2
F353	3/8-16 ESNA LP Nut	2
F489	Washer 1/4 x 7/8 x .090	2
F520	1/4-28 x 3/8 Hex Bolt	2

\* Service Part Only

\*\* May be ordered as a kit for dealer installation. Contact your Walker dealer.

# 42 INCH COMPLETE CARRIER FRAME ASSEMBLY

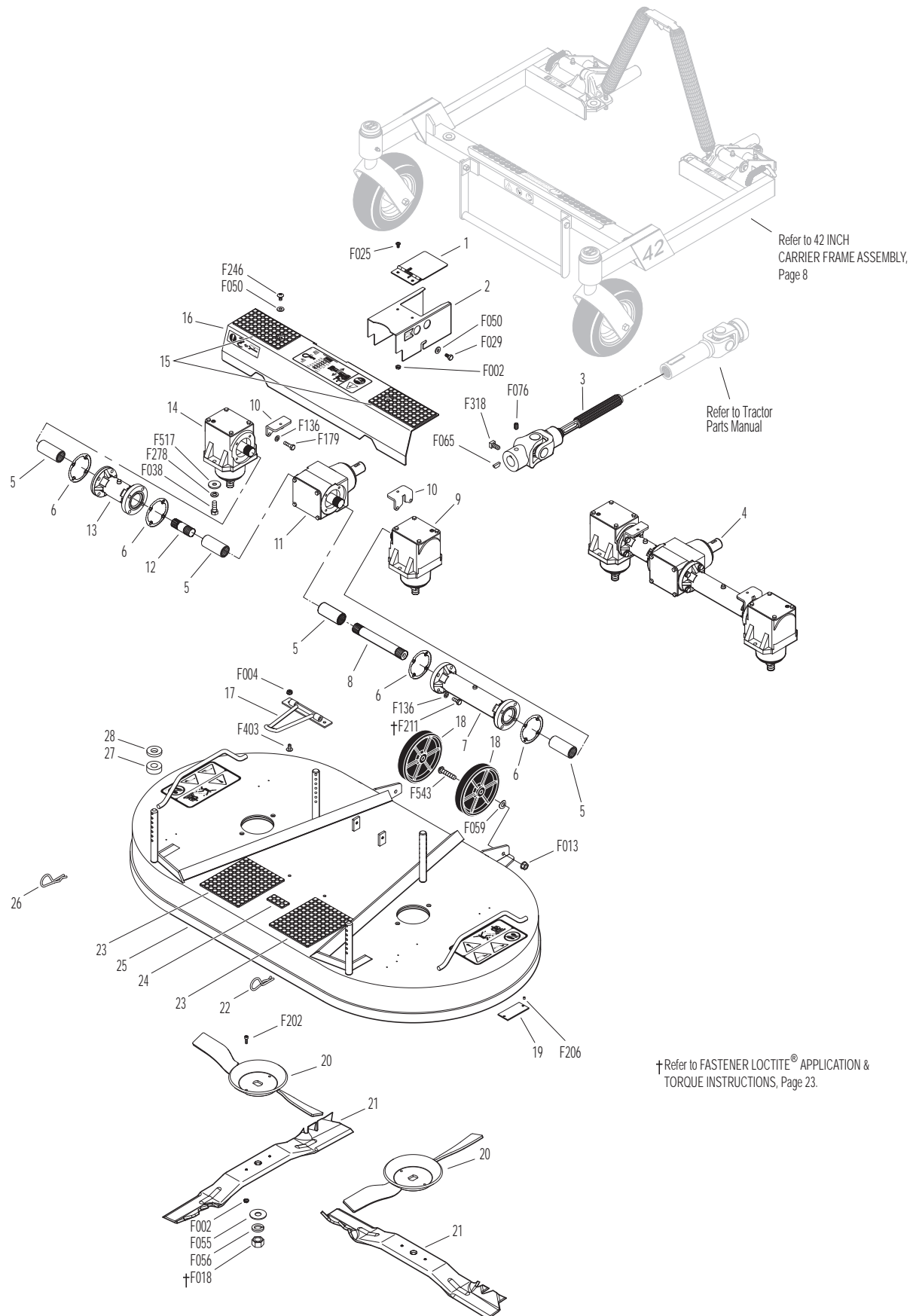


Refer to LUBRICATION POINTS, Page 20.

# DM42 DECK ASSEMBLY

ITEM NO.	PART NO.	DESCRIPTION	NO. REQ'D	ITEM NO.	PART NO.	DESCRIPTION	NO. REQ'D
<b>Gearbox and Drive Components</b>				23	8735-10	Rubber Mat (5 x 6)	2
1	8618-1	Cover, PTO Shaft Guard	1	24	8788-1	Rubber Mat (1 x 2)	1
2	8619	PTO Shaft Guard	1	25	5701-15	DM42 Deck Housing	1
	8618	PTO Shaft Guard Assembly	*			(Includes Items # 23 & 24)	
		(Includes Items # 1, 2, F002 & F025)		26	7775-2	Hitch Pin, RH (Gold) #6	2
3	5285-5	U-Joint Shaft Assembly, Spline (Keyed)	1	27	7434-1	Washer 1-3/8 x 5/8-1/2 Thick	4
		(Includes Items # F065, F076 & F318)		28	5727-1	Washer Shim (5/8 ID)	4
4	6711-7	42" Mulch Gearbox and Tube Assembly, HD	1	<b>Fasteners</b>			
		(Includes Items # 5-14, F136, F179 & F211)			F002	10-24 Keps Nut	6
5	6054	Spline Coupling	4		F004	1/4-20 Keps Nut	2
6	P007	Gasket, Cap (Peerless #788030)	4		F013	3/8-16 Whiz Locknut	2
7	5063	Gearbox Connector Tube (8-5/8)	1		F018	5/8-18 Hex Nut	2
8	6733-3	Connecting Shaft (6-1/4)	1		F025	10-24 x 3/8 PPHMS	2
9	5052-13	HD Gearbox (1:1) CCW/CCW	1		F029	1/4-20 x 1/2 Hex Bolt	2
10	5704-1	Gearbox Cover Support	2		F038	3/8-16 x 1 Hex Bolt	4
11	5051-5	HD Tee Gearbox, (1:1) CW-CW & CCW	1		F050	1/4 SAE Washer	4
12	6733-1	Connecting Shaft (2")	1		F055	5/8 SAE Washer	2
13	5062	Gearbox Connector Tube (4-3/8)	1		F056	5/8 Split Lock Washer	2
14	5053-3	HD Gearbox (1:1) CW-CCW	1		F059	3/8 Wave Spring Washer	2
15	5747-11	Rubber Mat (3 x 6)	2		F065	3/16 x 3/4 Woodruff Key (#606)	1
16	8629-3	42" Gearbox Cover	1		F076	3/8-16 x 5/8 SQH Set Screw	1
		(Includes Item # 15)			F136	AN960C416L Washer	16
<b>Deck Housing Components</b>					F179	1/4-20 x 1 Hex Bolt	4
17	8670	Tilt-Up Hook	1		F202	10-24 x 5/8 SHC Screw, GR5 SS	4
18	5162-12	Roller Wheel (5" Poly)	2		F206	#2 x 3/16 Drive Pin	2
		(Includes Items # F013, F059 & F543)			F211	1/4-20 x 7/8 Hex Bolt	12
19	NS	Deck Serial Number Plate	1		F246	1/4-20 x 1/2 PTHMS	2
20	5706-7	Mulch Blade Hub, 14" (Clear Zinc)	2		F278	3/8 Split Lock Washer	4
21	7705-25	Blade, 22" (Mulch)	2		F318	3/8-16 x 3/4 SQH Set Screw	1
	5705-27	42DM Blade Set W/Hubs	*		F403	1/4-20 x 1/2 PTHMS, SS	2
		(Includes Items # 20, 21, F002 & F202)			F517	Washer 3/8 x 1-1/8 x 1/8	4
22	7775-1	Hitch Pin, LH (Silver) #6	2		F543	3/8-16 x 1-1/2 BH Cap Screw	2
				* Service Part Only			

# DM42 DECK ASSEMBLY



# 48 INCH COMPLETE CARRIER FRAME ASSEMBLY

ITEM NO.	PART NO.	DESCRIPTION	NO. REQ'D
----------	----------	-------------	-----------

## Spring and Pivot Mount Components

1	5975-3	Cable Tie (50# x 7")	4
2	5744-1	Spring Clip Bracket	1
3	5743-1	Spring Cover	2
4	5743-3	Eyebolt (3/8-16 x 2)	2
	5743-4	Eyebolt (3/8-16 x 2-3/4)	2***
5	5830	Grease Fitting	8
6	8667-3	Pivot Mount Assembly, LH/Adj. (Includes Items # 5, F014, F489 & F520)	*
7	8667-4	Pivot Mount Assembly, RH/Adj. (Includes Items # 5, F014, F489 & F520)	*
8	5743-8	Extension Spring (1-1/2 x 7-3/4) (Includes Items # 1, F117 & F166)	2

## Carrier Frame Components

9	8674-11	Lever, Deck Lock, LH	1
10	7406-1	Handle Grip (Red)	2
11	8669	Lift Handle	1
12	5740-2	Deck Pin Bushing (5/8)	4
13	8661-2	48" Carrier Frame (Less Pivots)	1
	8661-1	48" Carrier Frame W/Forks (Less Pivots) (Includes Items # 19-21, 23, F055, F068 & F098)	*
14	8674-10	Lever, Deck Lock, RH	1

## Caster Wheel Components

15	5714-8	Bearing, Caster Wheel	4
16	5714-9	Spacer Tube	2
17	5715-18	Caster Wheel & Tire/No-Flat (8 x 3.00-4) (Includes Items # 15, 16 & 18)	2
	5715-16	Tire, Caster Wheel/No-Flat (8 x 3.00-4)	*
	5715-17	Caster Wheel, Pneumatic (8 x 3.00-4) (Includes Items # 15, 16 & 18)	**
	5715-15	Caster Wheel Tire, Pneumatic (8 x 3.00-4)	**
	5715-9	Tire Tube, Pneumatic (2.80/2.50-4)	**
18	5714-6	Axle Spacer Tube	2
19	5770-1	Caster Wheel Fork	2
20	8768-1	Seal (1-3/4 x 1-1/8)	2
21	8037	Bearing Cone (3/4 ID)	4
22	8769-1	Bearing Cup (1-3/4 x 1-7/16)	4
23	8769-10	Dust Cap, Deck Caster	2

ITEM NO.	PART NO.	DESCRIPTION	NO. REQ'D
----------	----------	-------------	-----------

## Fasteners

F012	3/8-16 Keps Nut	2
F014	3/8-16 ESNA Nut	2
F020	5/16-18 ESNA Nut	2
F047	3/8-16 x 4-1/2 Hex Bolt	2
F055	5/8 SAE Washer	2
F068	1/8 x 1 Cotter Pin	2
F084	5/16 Wave Spring Washer	2
F098	5/8-18 Slotted Hex Nut	2
F117	Retainer Ring	2
F123	1" External Snap Ring	4
F166	Retainer Ring	2
F226	5/16-18 x 7/8 Hex Bolt	2
F317	3/16 x 1 Split Spring Pin	2
F335	3/8-16 x 7/8 Set Screw, SS	2
F336	3/8-16 Jam Nut	2
F489	Washer 1/4 x 7/8 x .090	2
F520	1/4-28 x 3/8 Hex Bolt	2

\* Service Part Only

\*\* May be ordered as a kit for dealer installation. Contact your Walker dealer.

\*\*\* Item used with DM42A and DM42B Mulching Decks only

**NOTE:** The 48 Inch Carrier Frame is also used on the DM42A Mulching Deck and DM42B Mulching Deck.

This diagram illustrates the assembly of a deck component, showing various parts and their corresponding labels. The components are numbered 1 through 23, and specific part numbers are provided for many of them.

**Part Numbers and Labels:**

- 1: Coil spring
- 2: Pin
- 3: Coil spring
- 4: Pin
- 5: Pin
- 6: Pin
- 7: Pin
- 8: Pin
- 9: Pin
- 10: Pin
- 11: Pin
- 12: Pin
- 13: Pin
- 14: Pin
- 15: Pin
- 16: Pin
- 17: Pin
- 18: Pin
- 19: Pin
- 20: Pin
- 21: Pin
- 22: Pin
- 23: Pin

**Other Labels:**

- F068
- F098
- F055
- F166
- F117
- F336
- F335
- F489
- F520
- F014
- F047
- F012
- F084
- F020
- F123
- F226
- F317

**Assembly Instructions:**

- Refer to DM42A DECK ASSEMBLY, Page 14 or DM42B DECK ASSEMBLY, Page 16
- Refer to DM48 DECK ASSEMBLY, Page 18
- Refer to LUBRICATION POINTS, Page 20.

13

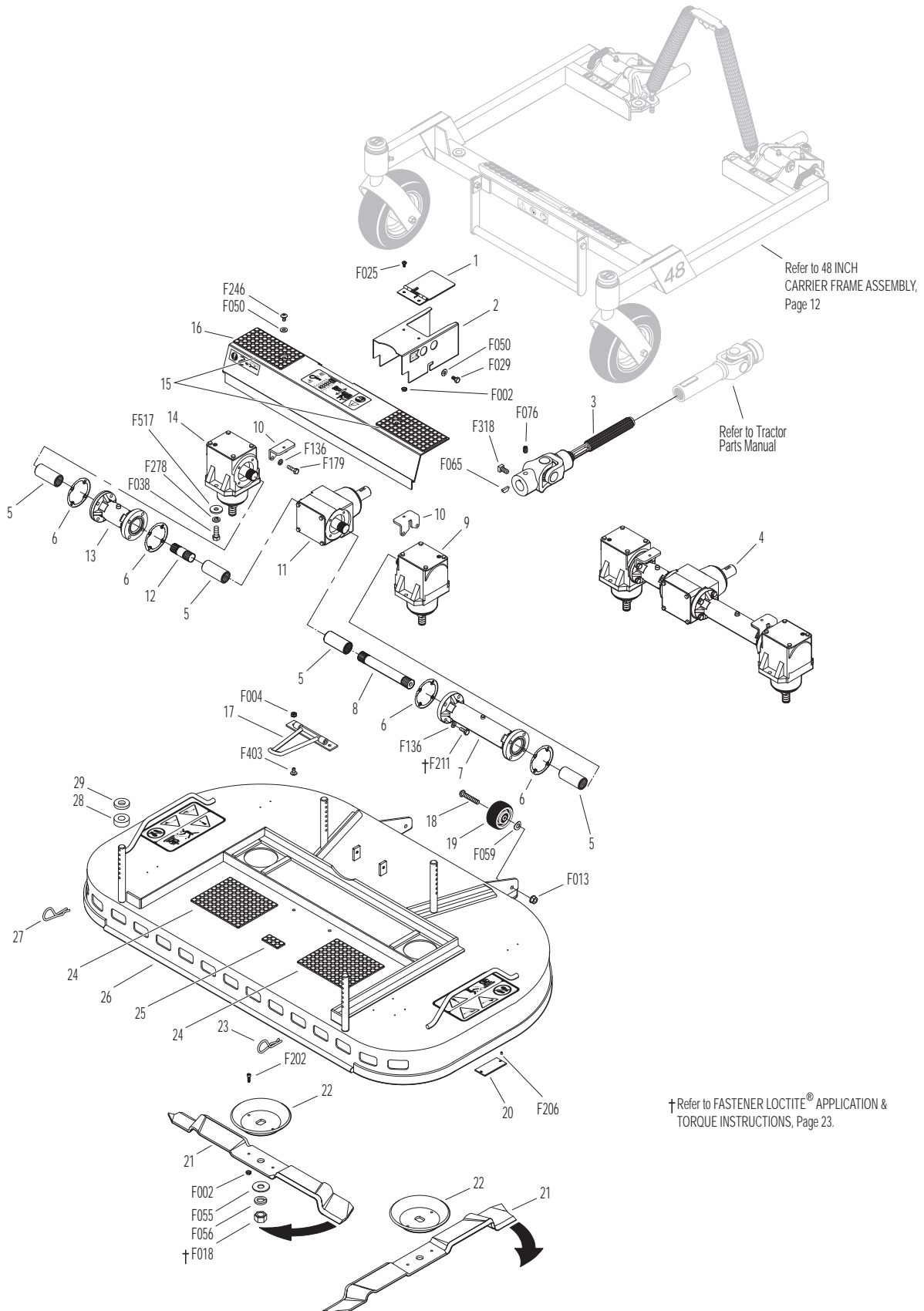


# DM42A DECK ASSEMBLY

ITEM NO.	PART NO.	DESCRIPTION	NO. REQ'D	ITEM NO.	PART NO.	DESCRIPTION	NO. REQ'D
<b>Gearbox and Drive Components</b>				23	7775-1	Hitch Pin, LH (Silver) #6	2
1	8618-1	Cover, PTO Shaft Guard	1	24	8735-10	Rubber Mat (5 x 6)	2
2	8619	PTO Shaft Guard	1	25	8788-1	Rubber Mat (1 x 2)	1
	8618	PTO Shaft Guard Assembly (Includes Items # 1, 2, F002 & F025)	*	26	5701-11	DML42A Deck Housing (Includes Items # 24 & 25)	1
3	7285-4	U-Joint Shaft Assembly, Splined (Keyed) (Includes Items # F065, F076 & F318)	1	27	7775-2	Hitch Pin, RH (Gold) #6	2
4	6711-8	42" Mulch Gearbox and Tube Assembly, HD (Includes Items # 5-14, F136, F179 & F211)	1	28	7434-1	Washer 1-3/8 x 5/8-1/2 Thick	4
5	6054	Spline Coupling	4	29	5727-1	Washer Shim (5/8 ID)	4
6	P007	Gasket, Cap (Peerless #788030)	4	<b>Fasteners</b>			
7	5063	Gearbox Connector Tube (8-5/8)	1		F002	10-24 Keps Nut	6
8	6733-3	Connecting Shaft (6-1/4)	1		F004	1/4-20 Keps Nut	2
9	5052-15	HD Gearbox (1:1, 1.762) CCW-CCW	1		F013	3/8-16 Whiz Locknut	2
10	5704-1	Gearbox Cover Support	2		F018	5/8-18 Hex Nut	2
11	5051-5	HD Tee Gearbox (1:1) CW-CW & CCW	1		F025	10-24 x 3/8 PPHMS	2
12	6733-1	Connecting Shaft (2")	1		F029	1/4-20 x 1/2 Hex Bolt	2
13	5062	Gearbox Connector Tube (4-3/8)	1		F038	3/8-16 x 1 Hex Bolt	4
14	5053-15	HD Gearbox (1:1, 1.762) CW-CCW	1		F050	1/4 SAE Washer	4
15	5747-11	Rubber Mat (3 x 6)	2		F055	5/8 SAE Washer	2
16	5785-5	42" Gearbox Cover (Includes Item # 15)	1		F056	5/8 Split Lock Washer	2
<b>Deck Housing Components</b>					F059	3/8 Wave Spring Washer	2
17	8670	Tilt-Up Hook	1		F065	3/16 x 3/4 Woodruff Key (#606)	1
18	8490-1	Roller Wheel Axle Bolt	2		F076	3/8-16 x 5/8 SQH Set Screw	1
19	9772	Roller Wheel Assembly (2-1/2) (Includes Item # F059)	2		F136	AN960C416L Washer	16
20	NS	Deck Serial Number Plate	1		F179	1/4-20 x 1 Hex Bolt	4
21	5705-28	Blade 22" Mulch, Special	2		F202	10-24 x 5/8 SHC Screw, GR5 SS	4
	5705-19	DML42A Blade Set W/Hubs (Includes Items # 21, 22, F002 & F202)	*		F206	#2 x 3/16 Drive Pin	2
22	5706	Blade Hub & Trash Guard	2		F211	1/4-20 x 7/8 Hex Bolt	12
					F246	1/4-20 x 1/2 PTHMS	2
					F278	3/8 Split Lock Washer	4
					F318	3/8-16 x 3/4 SQH Set Screw	1
					F403	1/4-20 x 1/2 PTHMS, SS	2
					F517	Washer 3/8 x 1-1/8 x 1/8	4
				* Service Part Only			



# DM42A DECK ASSEMBLY

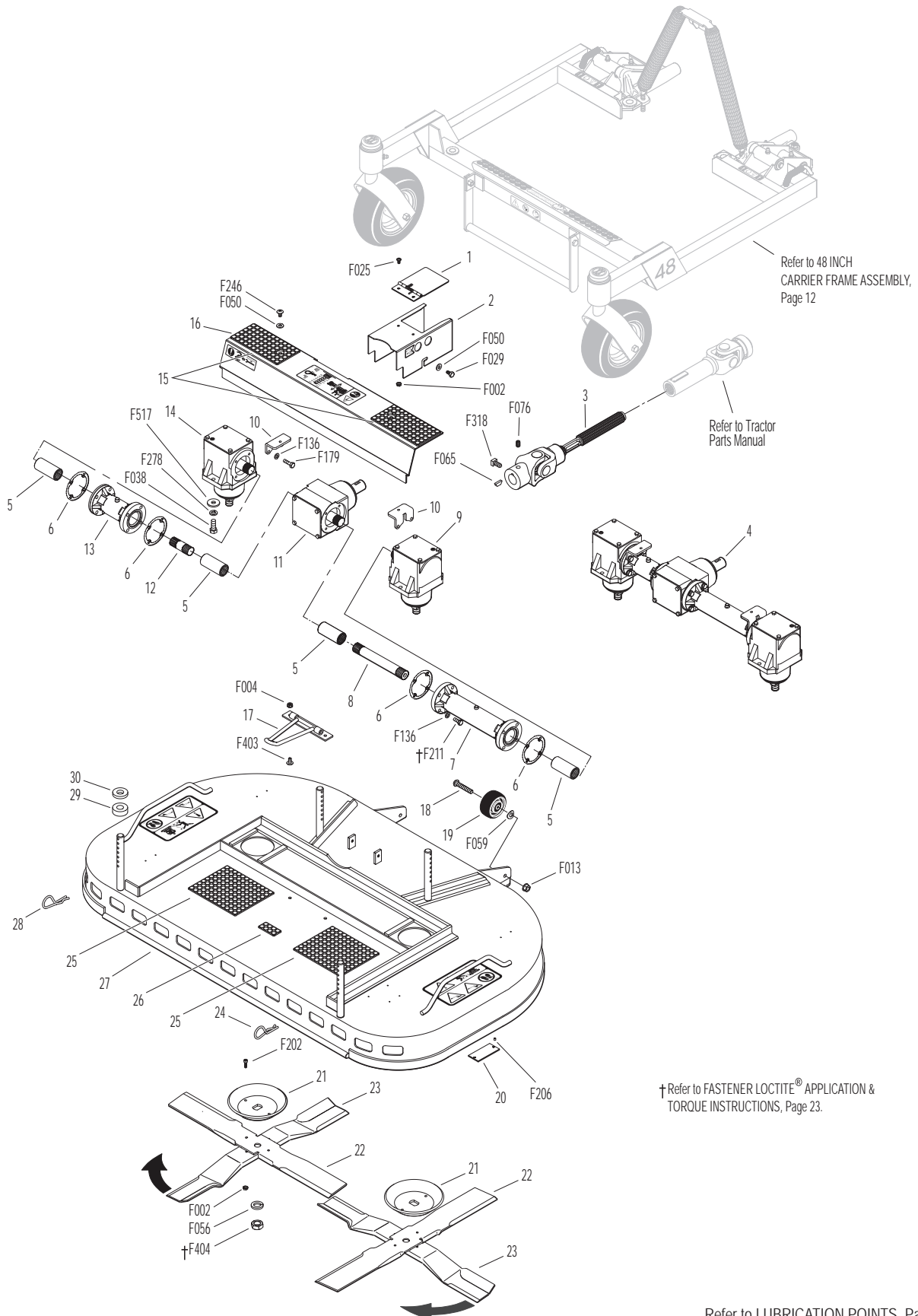


Refer to LUBRICATION POINTS, Page 20.

# DM42B DECK ASSEMBLY

ITEM NO.	PART NO.	DESCRIPTION	NO. REQ'D	ITEM NO.	PART NO.	DESCRIPTION	NO. REQ'D
<b>Gearbox and Drive Components</b>				23	5705-10	Blade, 21" (Lower Mulching)	2
1	8618-1	Cover, PTO Shaft Guard	1	24	7775-1	Hitch Pin, LH (Silver) #6	2
2	8619	PTO Shaft Guard	1	25	8735-10	Rubber Mat (5 x 6)	2
	8618	PTO Shaft Guard Assembly (Includes Items # 1, 2, F002 & F025)	*	26	8788-1	Rubber Mat (1 x 2)	1
3	7285-4	U-Joint Shaft Assembly, Spline (Keyed) (Includes Items # F065, F076 & F318)	1	27	5701-13	DML42B Deck Housing (Includes Items # 25 & 26)	1
4	6711-7	42" Mulch Gearbox and Tube Assembly, HD (Includes Items # 5-14, F136, F179 & F211)	1	28	7775-2	Hitch Pin, RH (Gold) #6	2
5	6054	Spline Coupling	4	29	7434-1	Washer 1-3/8 x 5/8-1/2 Thick	4
6	P007	Gasket, Cap (Peerless #788030)	4	30	5727-1	Washer Shim (5/8 ID)	4
7	5063	Gearbox Connector Tube (8-5/8)	1	<b>Fasteners</b>			
8	6733-3	Connecting Shaft (6-1/4)	1		F002	10-24 Keps Nut	6
9	5052-13	HD Gearbox (1:1) CCW/CCW	1		F004	1/4-20 Keps Nut	2
10	5704-1	Gearbox Cover Support	2		F013	3/8-16 Whiz Locknut	2
11	5051-5	HD Tee Gearbox (1:1) CW-CW & CCW	1		F025	10-24 x 3/8 PPHMS	2
12	6733-1	Connecting Shaft (2")	1		F029	1/4-20 x 1/2 Hex Bolt	2
13	5062	Gearbox Connector Tube (4-3/8)	1		F038	3/8-16 x 1 Hex Bolt	4
14	5053-3	HD Gearbox (1:1) CW-CCW	1		F050	1/4 SAE Washer	4
15	5747-11	Rubber Mat (3 x 6)	2		F056	5/8 Split Lock Washer	2
16	5785-5	42" Gearbox Cover (Includes Item # 15)	1		F059	3/8 Wave Spring Washer	2
<b>Deck Housing Components</b>					F065	3/16 x 3/4 Woodruff Key (#606)	1
17	8670	Tilt-Up Hook	1		F076	3/8-16 x 5/8 SQH Set Screw	1
18	8490-1	Roller Wheel Axle Bolt	2		F136	AN960C416L Washer	16
19	9772	Roller Wheel Assembly (2-1/2) (Includes Item # F059)	2		F179	1/4-20 x 1 Hex Bolt	4
20	NS	Deck Serial Number Plate	1		F202	10-24 x 5/8 SHC Screw, GR5 SS	4
21	5706	Blade Hub & Trash Guard	2		F206	#2 x 3/16 Drive Pin	2
22	5705-11	Blade, 22" (Upper Mulching)	2		F211	1/4-20 x 7/8 Hex Bolt	12
	5705-12	42DML Blade Set W/Hubs (Includes Items # 21-23, F002 & F202)	*		F246	1/4-20 x 1/2 PTHMS	2
					F278	3/8 Split Lock Washer	4
					F318	3/8-16 x 3/4 SQH Set Screw	1
					F403	1/4-20 x 1/2 PTHMS, SS	2
					F404	5/8-18 Jam Nut	2
					F517	Washer 3/8 x 1-1/8 x 1/8	4
				*	Service Part Only		

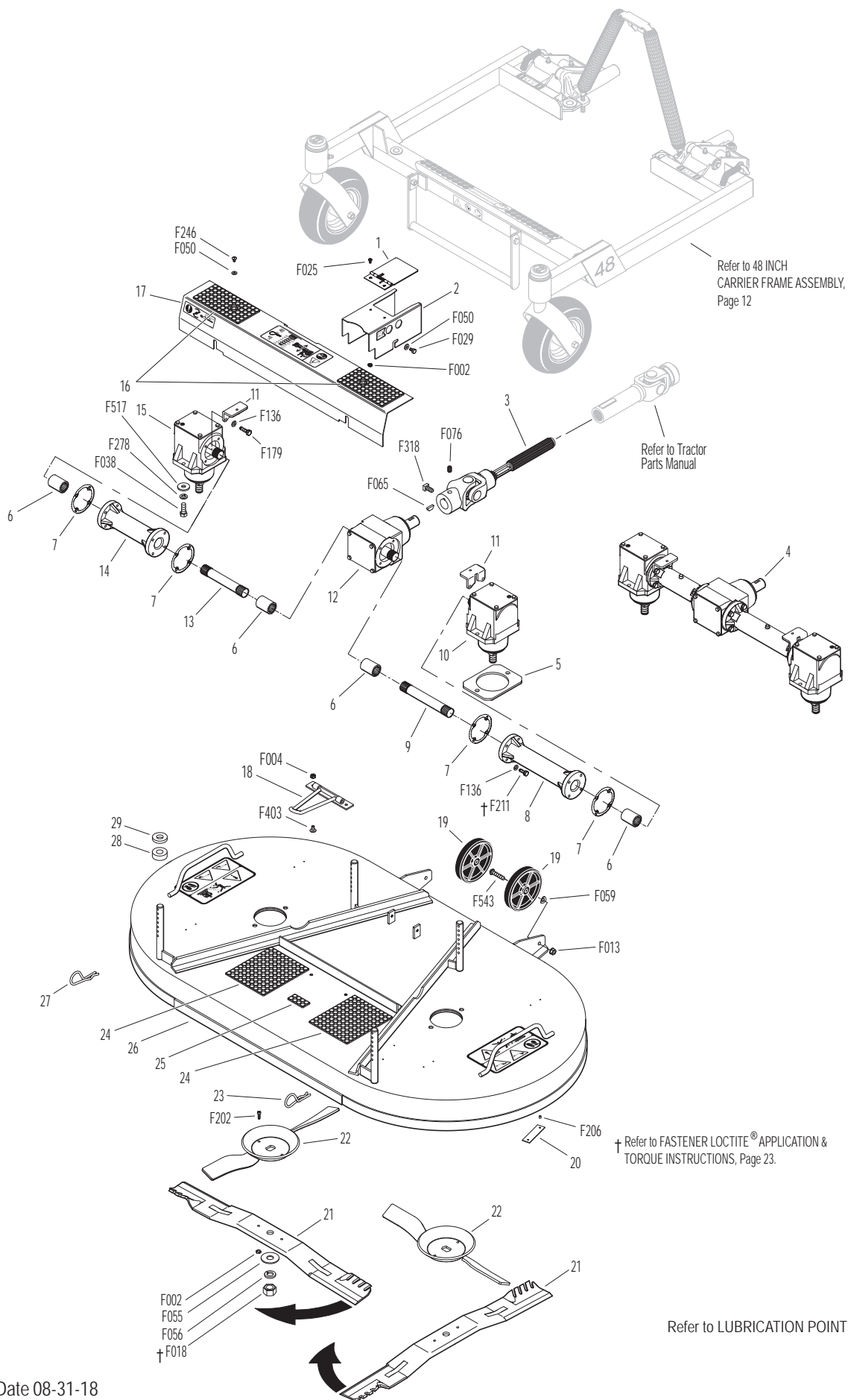
# DM42B DECK ASSEMBLY



# DM48 DECK ASSEMBLY

ITEM NO.	PART NO.	DESCRIPTION	NO. REQ'D	ITEM NO.	PART NO.	DESCRIPTION	NO. REQ'D
<b>Gearbox and Drive Components</b>				24	8735-10	Rubber Mat (5 x 6)	2
1	8618-1	Cover, PTO Shaft Guard	1	25	8788-1	Rubber Mat (1 x 2)	1
2	8619	PTO Shaft Guard	1	26	7702-11	48 DML Deck Housing	1
	8618	PTO Shaft Guard Assembly	*			(Includes Items # 24 & 25)	
		(Includes Items # 1, 2, F002 & F025)		27	7775-2	Hitch Pin, RH (Gold) #6	2
3	7285-5	U-Joint Shaft Assembly, Splined (Keyed)	1	28	7434-1	Washer 1-3/8 x 5/8-1/2 Thick	4
		(Includes Items # F065, F076 & F318)		29	5727-1	Washer Shim (5/8 ID)	4
4	6711-12	HD Gearbox and Tube Assembly	1	<b>Fasteners</b>			
		(Includes Items # 6-15, F136, F179 & F211)		F002	10-24 Keps Nut		6
5	7600-20	Riser Plate (3/16)	2	F004	1/4-20 Keps Nut		2
6	6054	Spline Coupling	4	F013	3/8-16 Whiz Locknut		2
7	P007	Gasket, Cap (Peerless #788030)	4	F018	5/8-18 Hex Nut		2
8	5066	Gearbox Connector Tube (9-5/16)	1	F025	10-24 x 3/8 PPHMS		2
9	6733-6	Connecting Shaft (7")	1	F029	1/4-20 x 1/2 Hex Bolt		2
10	5052-13	HD Gearbox (1:1) CCW/CCW	1	F038	3/8-16 x 1 Hex Bolt		4
11	5704-1	Gearbox Cover Support	2	F050	1/4 SAE Washer		4
12	5051-5	HD Tee Gearbox (1:1) CW-CW & CCW	1	F055	5/8 SAE Washer		2
13	6733-2	Connecting Shaft (4-1/8)	1	F056	5/8 Split Lock Washer		2
14	5061	Gearbox Connector Tube (6-11/16)	1	F059	3/8 Wave Spring Washer		2
15	5053-3	HD Gearbox (1:1) CW-CCW	1	F065	3/16 x 3/4 Woodruff Key (#606)		1
16	5747-12	Rubber Mat (3 x 6)	2	F076	3/8-16 x 5/8 SQH Set Screw		1
17	7785-3	48" Gearbox Cover	1	F136	AN960C416L Washer		16
		(Includes Item # 16)		F179	1/4-20 x 1 Hex Bolt		4
<b>Deck Housing Components</b>				F202	10-24 x 5/8 SHC Screw, GR5 SS		4
18	8670	Tilt-Up Hook	1	F206	#2 x 3/16 Drive Pin		2
19	5162-12	Roller Wheel (5" Poly)	2	F211	1/4-20 x 7/8 Hex Bolt		12
		(Includes Items # F013, F059 & F543)		F246	1/4-20 x 1/2 PTHMS		2
20	NS	Deck Serial Number Plate	1	F278	3/8 Split Lock Washer		4
21	7705-20	Blade 25", Mulch	2	F318	3/8-16 x 3/4 SQH Set Screw		1
	7705-21	48 DML Blade Set With Hubs	*	F403	1/4-20 x 1/2 PTHMS, SS		2
		(Includes Items # 21, 22, F002 & F202)		F517	Washer 3/8 x 1-1/8 x 1/8		4
22	5706-6	Mulch Blade Hub	2	F543	3/8-16 x 1-1/2 BH Cap Screw		2
23	7775-1	Hitch Pin, LH (Silver) #6	2	* Service Part Only			

# DM48 DECK ASSEMBLY



# LUBRICATION POINTS

ITEM NO.	LOCATION	LUBRICATION TYPE	NO. PLACES
----------	----------	------------------	------------

## 36", 42", 48" Assemblies

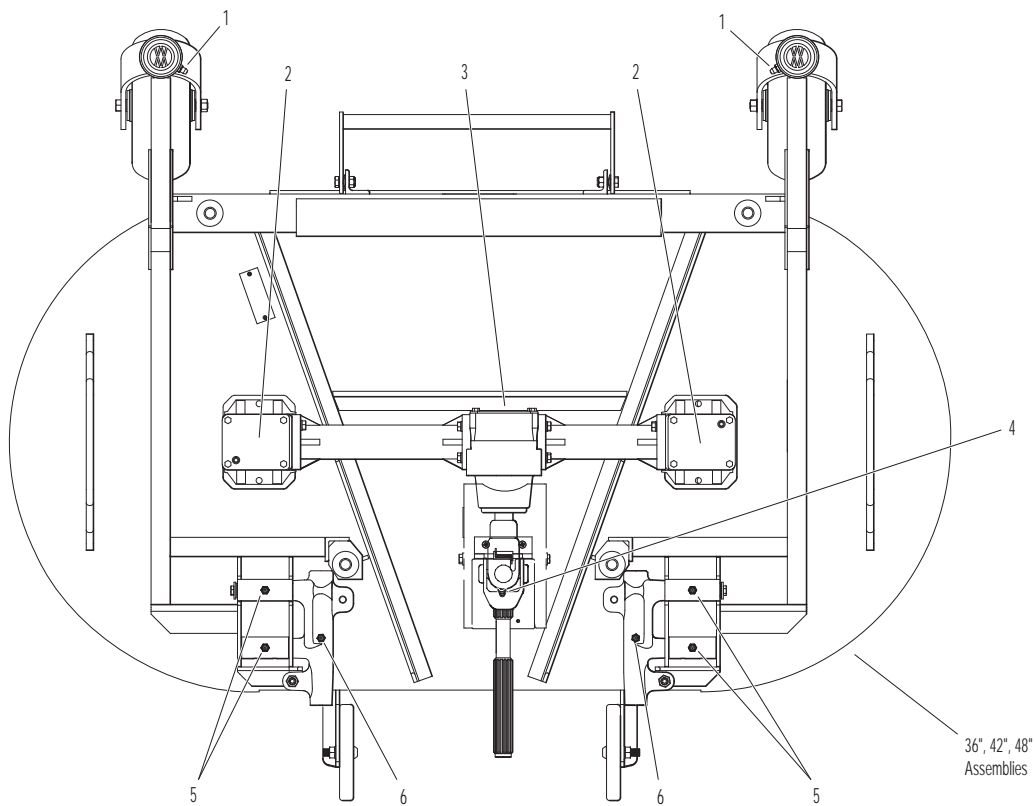
1	Deck Caster Wheel Fork Pivot	Grease	2
2	Blade Drive Gearbox	Oil*	2
3	Tee Gearbox, Deck	Oil*	1
4	Universal Joint Shaft Assembly	Grease**	1
5	Pivot Assembly, Tilt-Up Deck	Grease	4
6	Deck Support Arm Socket	Grease	2

ITEM NO.	LOCATION	LUBRICATION TYPE	NO. PLACES
----------	----------	------------------	------------

\* Gearboxes are permanently lubricated and sealed requiring no scheduled lubrication. Oil level should be checked only when an oil leak is noted.

\*\* Grease every 25 hours.

**NOTE:** Exact location of some Lubrication Points may vary slightly from those shown in the illustration. Model DM48 is shown for reference only; for further information on location of parts not shown here, refer to the parts listings for individual Carrier Frames and Deck Assemblies.



# H24d, H25, H27i, H37i AND H38i DECK ARM ADAPTER KIT

ITEM NO.	PART NO.	DESCRIPTION	NO. REQ'D
----------	----------	-------------	-----------

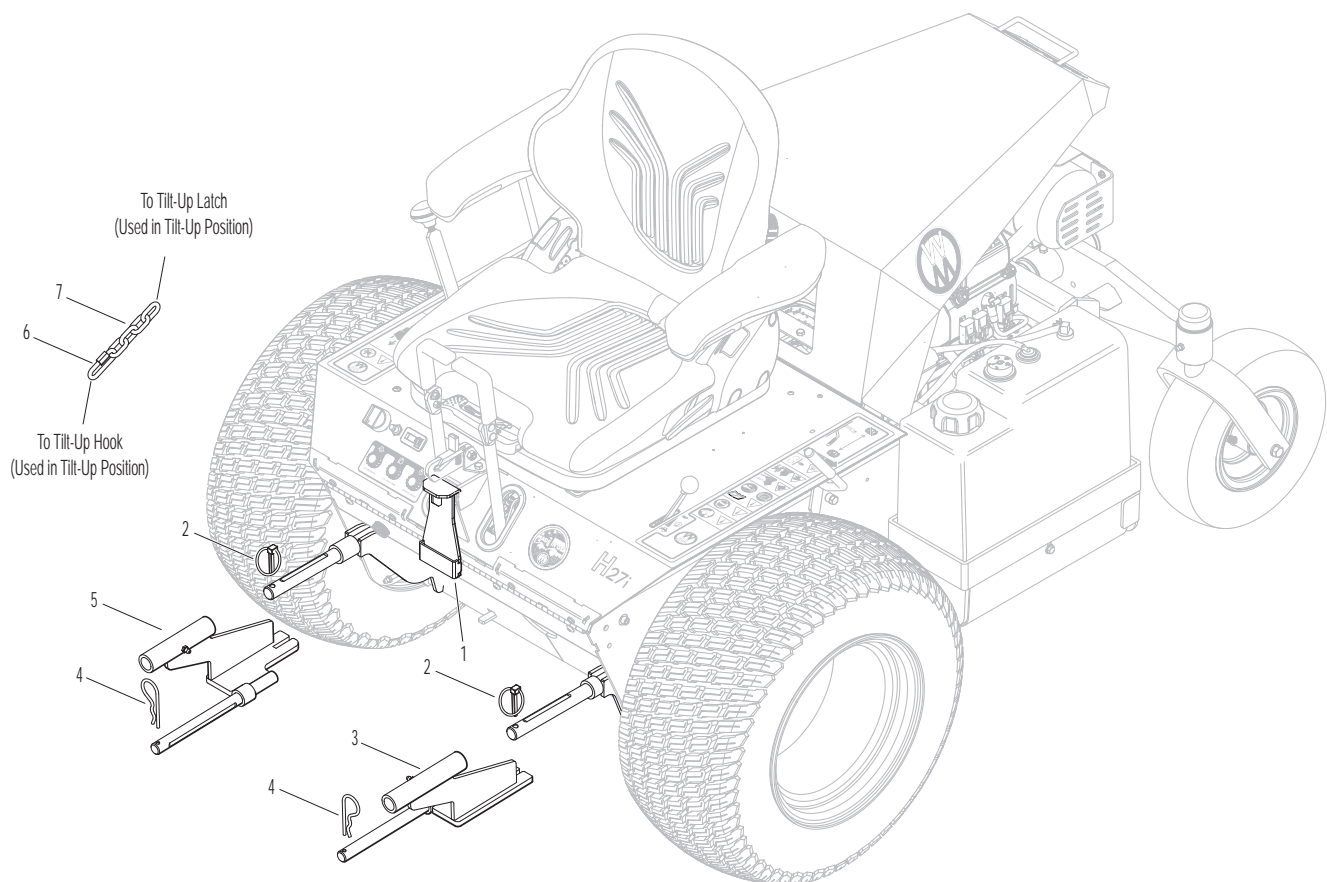
ITEM NO.	PART NO.	DESCRIPTION	NO. REQ'D
----------	----------	-------------	-----------

## Kit 2430-10 Deck Arm Adapter Kit

Includes Items # 1-7 and instructions. May be ordered as a kit for dealer installation. Contact your Walker dealer.

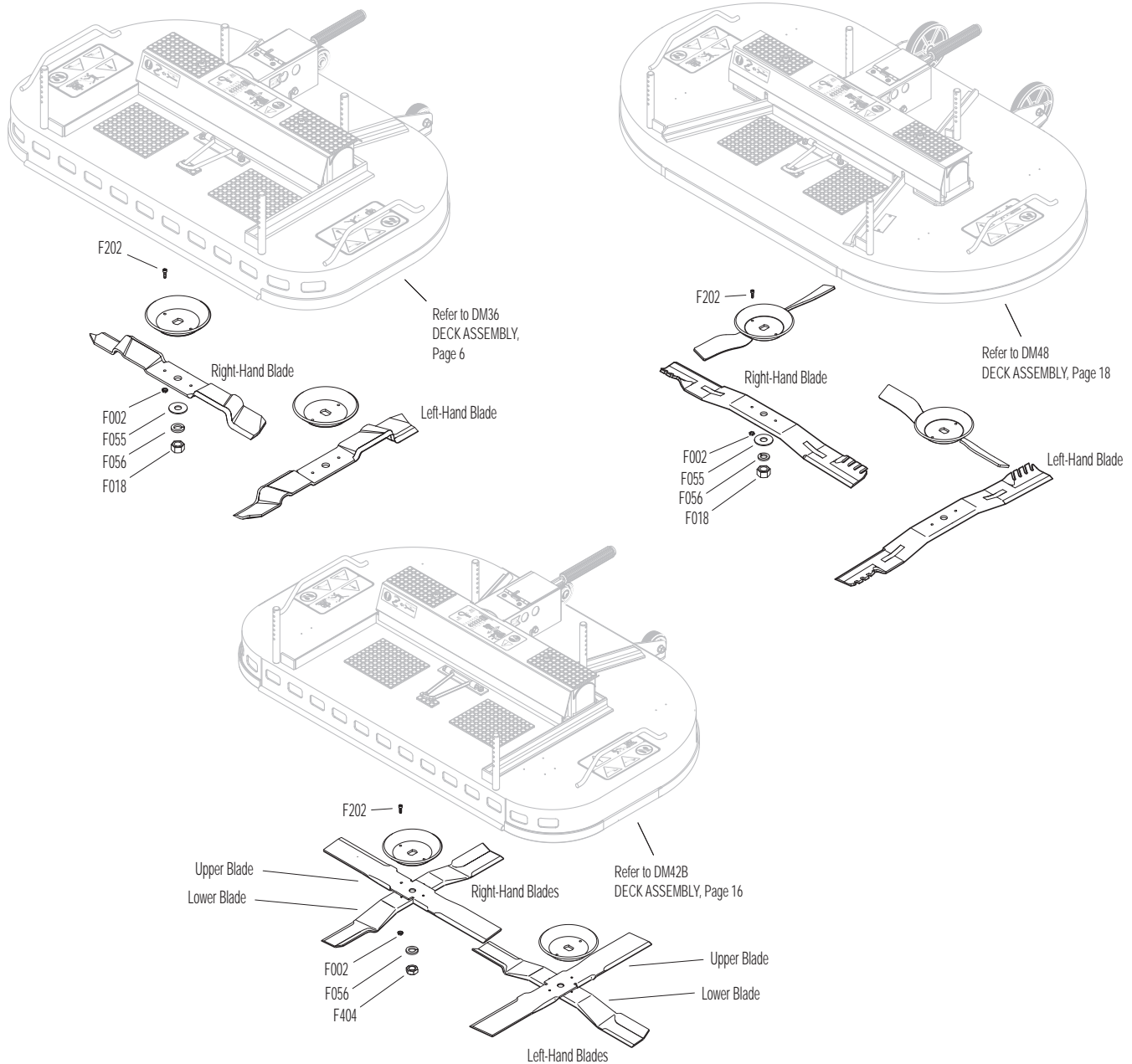
**NOTE:** Installation of 2430-10 on Walker Models H24d, H25, H27i, H37i and H38i allows the use of the DM48 deck.

1	2744-2	Counter Weight Spring Extension	1
2	2775	Lynch Pin (5/16 x 1-1/4)	2
3	2431-1	Deck Arm Adapter, LH	1
4	5775-2	Hitch Pin (#6)	2
5	2430-1	Deck Arm Adapter, RH	1
6	2744-4	1/4" Quick Link	1
7	2744-5	Chain	1





# BLADE USAGE CHART



TWO BLADE DECKS	RH BLADE	LH BLADE	BLADE SET
DM36	5705-23	5705-23	
DM42	7705-25	7705-25	5705-27**
DM42A	5705-28	5705-28	5705-19*
DM42B	5705-11 (Upper Blade) 5705-10 (Lower Blade)	5705-11 (Upper (Blade) 5705-10 (Lower Blade)	5705-12*
DM48	7705-20	7705-20	7705-21***

Right hand and left hand orientated with operator on seat.

\* Blade set includes 5706 (Blade Hub & Trash Guard), F002 & F202.

\*\* Blade set includes 5706-7 (Mulch Blade Hub), F002 & F202.

\*\*\* Blade set includes 5706-6 (Mulch Blade Hub), F002 & F202.



# FASTENER LOCTITE® APPLICATION & TORQUE INSTRUCTIONS

ITEM NO.	DESCRIPTION
----------	-------------

## HD Gear Drive Assemblies DM42, DM42A, DM42B, DM48

- 1 Apply Loctite® Threadlocker # 242 (Blue) to Item # 1 used on HD Gearbox Connector Tubes. Torque to 115 lb-in. (13.0 N·m).

## DM36 Gear Drive Assembly

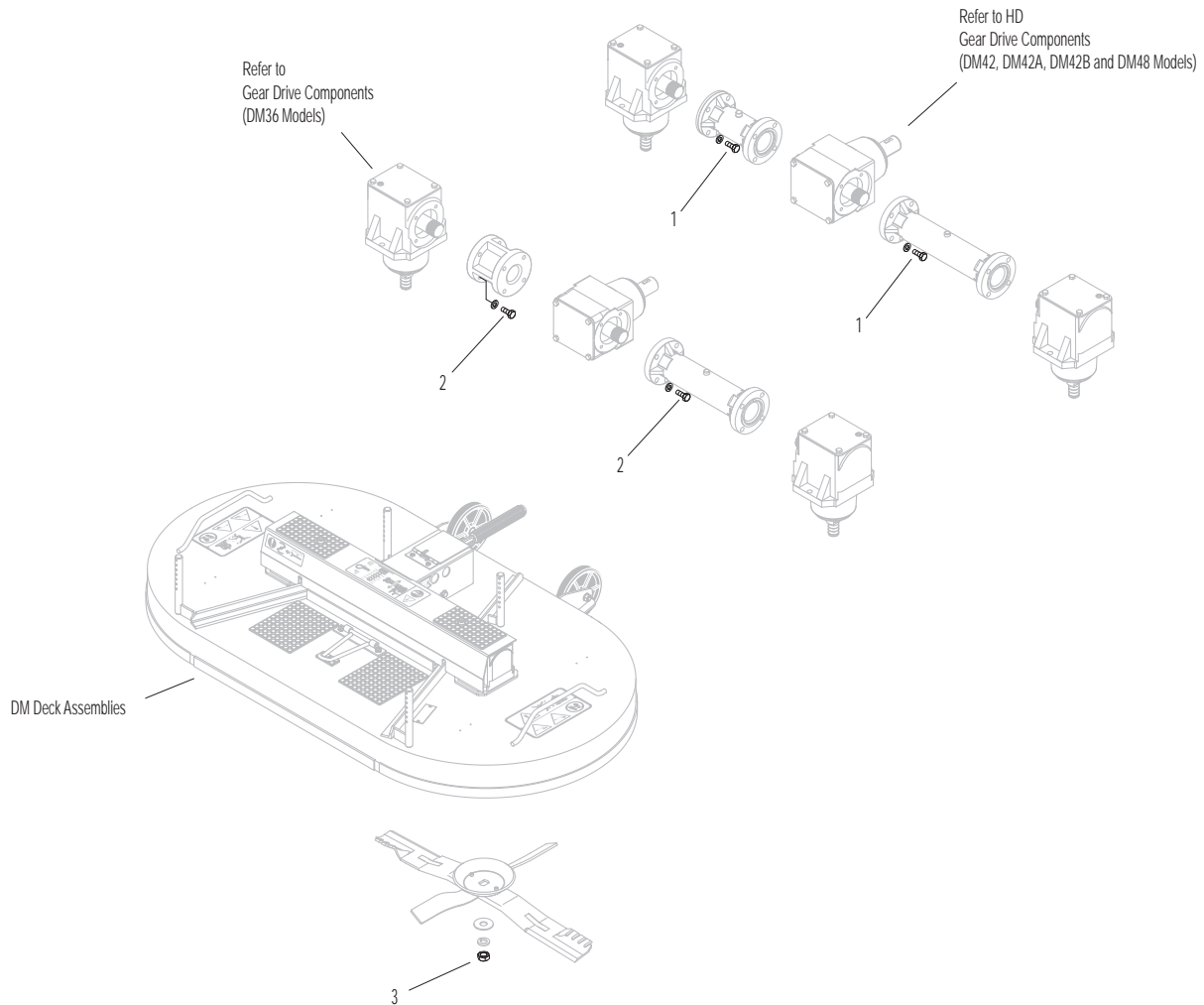
- 2 Apply Loctite® Threadlocker # 242 (Blue) to P/N F211 (1/4-20 x 7/8 Hex Bolt, used on Gearbox Connector Tubes) prior to assembly. Torque to 90 lb-in. (10.2 N·m).

ITEM NO.	DESCRIPTION
----------	-------------

## DM Deck Assemblies

- 3 Torque P/N F018 (5/8-18 Hex Nut) or F404 (5/8-18 Jam Nut, used on underside of blades) to 60 lb-ft (81.4 N·m). **DO NOT** apply Loctite®.

**NOTE:** Model DM48 is shown here. Refer to individual deck assemblies for exact locations and quantities of items listed above.



# MAINTENANCE AND SERVICE RECORD SHEET

DATE	SERVICE ITEM	ENGINE HOURS

## DECK / TRACTOR COMPATIBILITY CHART

	DM36	DM42	DM42A	DM42B	DM48
B18	X	X	X	X	X
B19	X	X	X	X	X
B23i	X	X	X	X	X
B25p	X	X	X	X	X
S14 GHS	*	*	*	*	
S14i GHS	*	*	*	*	
S18 GHS	*	*	*	*	*
C19 GHS	*	*	*	*	*
C19i GHS	*	*	*	*	*
T23 SD	X	X	X	X	X
T23 GHS	*	*	*	*	*
T25i SD	X	X	X	X	X
T25i GHS	*	*	*	*	*
T30i SD	X	X	X	X	X
T30i GHS	*	*	*	*	*
D21d SD	X	X	X	X	X
D21d GHS	*	*	*	*	*
H24d					**
H25					**
H27i					**
H37i					**
H38i					**
	<p>X    Deck and tractor are fully compatible.</p> <p>*    When using this deck on GHS tractors, installation of P/N 7541 (Blower Lockout Kit) is recommended. Contact your Walker dealer.</p> <p>**    Decks that are compatible with Models H24d, H25, H27i, H37i and H38i using Kit # 2430-10 (Deck Arm Adapter Kit).</p>				

## **LIMITED WARRANTY FOR WALKER COMMERCIAL RIDER MOWER**

**1. WHAT THIS WARRANTY COVERS, AND FOR HOW LONG:**

Walker Manufacturing company will, at its option, repair or replace, without charge, any part covered by this warranty which is found to be defective in material and/or workmanship within one (1) year after date of sale to the original retail purchaser unless the product is used for rental purposes, in which case this warranty is limited to ninety (90) days. At Walker's request, customer will make the defective part available for inspection by Walker and/or return the defective part to Walker, transportation charges prepaid. All parts and components of the Walker Mower are covered by this warranty.

**2. WHAT THIS WARRANTY DOES NOT COVER:**

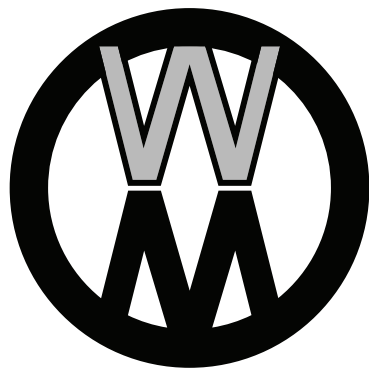
- A. This warranty does not cover defects caused by depreciation or damage caused by normal wear, accidents, improper maintenance, improper use or abuse of the product, alterations, or failure to follow the instructions contained in the Operator's Manual for operation and maintenance.
- B. The customer shall pay any charges for making service calls and/or for transporting the mower to and from the place where the inspection and/or warranty work is performed.

**3. HOW TO OBTAIN SERVICE UNDER THIS WARRANTY:**

Warranty service can be arranged by contacting the dealer where you purchased the mower or by contacting Walker Manufacturing Company, 5925 East Harmony Road, Ft. Collins, CO 80528. Proof of the date of purchase may be required to verify warranty coverage.

**4. WARRANTY LIMITATION:**

- A. **THERE IS NO OTHER EXPRESS WARRANTY. ANY WARRANTY THAT MAY BE IMPLIED FROM THIS PURCHASE INCLUDING MERCHANTABILITY AND FITNESS FOR A PARTICULAR PURPOSE IS HEREBY LIMITED TO THE DURATION OF THIS WARRANTY AND TO THE EXTENT PERMITTED BY LAW ANY AND ALL IMPLIED WARRANTIES ARE EXCLUDED.** Some states do not allow limitations on how long an implied warranty lasts, so the above limitations may not apply to you.
- B. **WALKER WILL NOT BE LIABLE FOR ANY INCIDENTAL, CONSEQUENTIAL, OR SPECIAL DAMAGES AND/OR EXPENSES IN CONNECTION WITH THE PURCHASE OR USE OF THE MOWER.** Some states do not allow the exclusion or limitation of incidental or consequential damages, so the above limitation(s) or exclusion(s) may not apply to you.
- C. Only the warranty expressed in this limited warranty shall apply and no dealer, distributor, or individual is authorized to amend, modify, or extend this warranty in any way. Accordingly, additional statements such as dealer advertising or presentations, whether oral or written, do not constitute warranties by Walker, and should not be relied upon.
- D. This warranty gives you specific legal rights, and you may also have other rights which vary from state to state.



**WALKER**

**WALKER MFG. CO. • 5925 E. HARMONY ROAD, FORT COLLINS, CO 80528 • (970) 221-5614**  
**FORM NO. 091918      PRINTED IN USA      [www.walker.com](http://www.walker.com)      ©2018 WALKER MFG. CO**