

WALKER

Illustrated Parts Manual

*B*23



Beginning S/N: 197180
P/N 4000-53

KEY TO ABBREVIATIONS USED IN THIS MANUAL

| <i>Abbreviation</i> | <i>What it Represents</i> |
|--------------------------------|--|
| ° (Dimension) | Degrees (Angle) |
| " (Dimension) | inches |
| (-) | Negative (Polarity) |
| (+) | Positive (Polarity) |
| -1 (as deck style designation) | Standard (Aluminum) Gear Drive Deck |
| -2 (as deck style designation) | Heavy Duty (Cast Iron) Gear Drive Deck |
| -3 (as deck style designation) | Belt Drive Deck |
| AT | All-Terrain |
| CCW | Counter-clockwise |
| CW | Clockwise |
| D | Diameter |
| DC | Deck, Collection (number refers to size in inches) |
| DM | Deck, Mulching (number refers to size in inches) |
| DR | Deck, Rear Discharge (number refers to size in inches) |
| DS | Deck, Side Discharge (number refers to size in inches) |
| DU | Garlock (Bearing) |
| ESNA (Fastener) | Nylon Insert Locknut |
| FSC | Forward Speed Control |
| GA | Gauge |
| gal. | gallon |
| GHS | Grass Handling System |
| GR (Fastener) | Grade |
| HD | Heavy Duty |
| HP | Horse Power |
| ID | Identification or Inside Diameter |
| L | Length |
| LH | Left Hand (orientated with operator on seat) |
| LP | Low Profile |
| mm (Dimension) | millimeters |
| MS (Fastener) | Machine Screw |
| NS (as part number) | Item is not sold by Walker Manufacturing |
| OD | Outside Diameter |
| oz. | ounce |
| PFH (Fastener) | Phillips Flat Head |
| P/N | Part Number |
| PPH (Fastener) | Phillips Pan Head |
| PTH (Fastener) | Phillips Truss Head |
| PTO | Power Take-Off |
| QKS | Quick Slide |
| qt. | quart |
| RH | Right Hand (orientated with operator on seat) |
| SAE (Fastener) | Society of Automotive Engineers |
| SBH (Fastener) | Socket Button Head (Bolt) |
| SFH (Fastener) | Slotted Flat Head |
| SHC (Fastener) | Socket Head Cap |
| SHL (Fastener) | Shoulder (Bolt) |
| SM (Fastener) | Sheet Metal (Screw) |
| S/N | Serial Number |
| SQH (Fastener) | Square Head |
| SS (Fastener) | Stainless Steel |
| ST (Fastener) | Self-Tapping (Screw) |
| V | Volts |
| VLR | Very Low Restriction |

NOTE: In some instances, combinations of abbreviations may be used (e.g. PPHMS - Phillips Pan Head Machine Screw).

ILLUSTRATED PARTS LIST

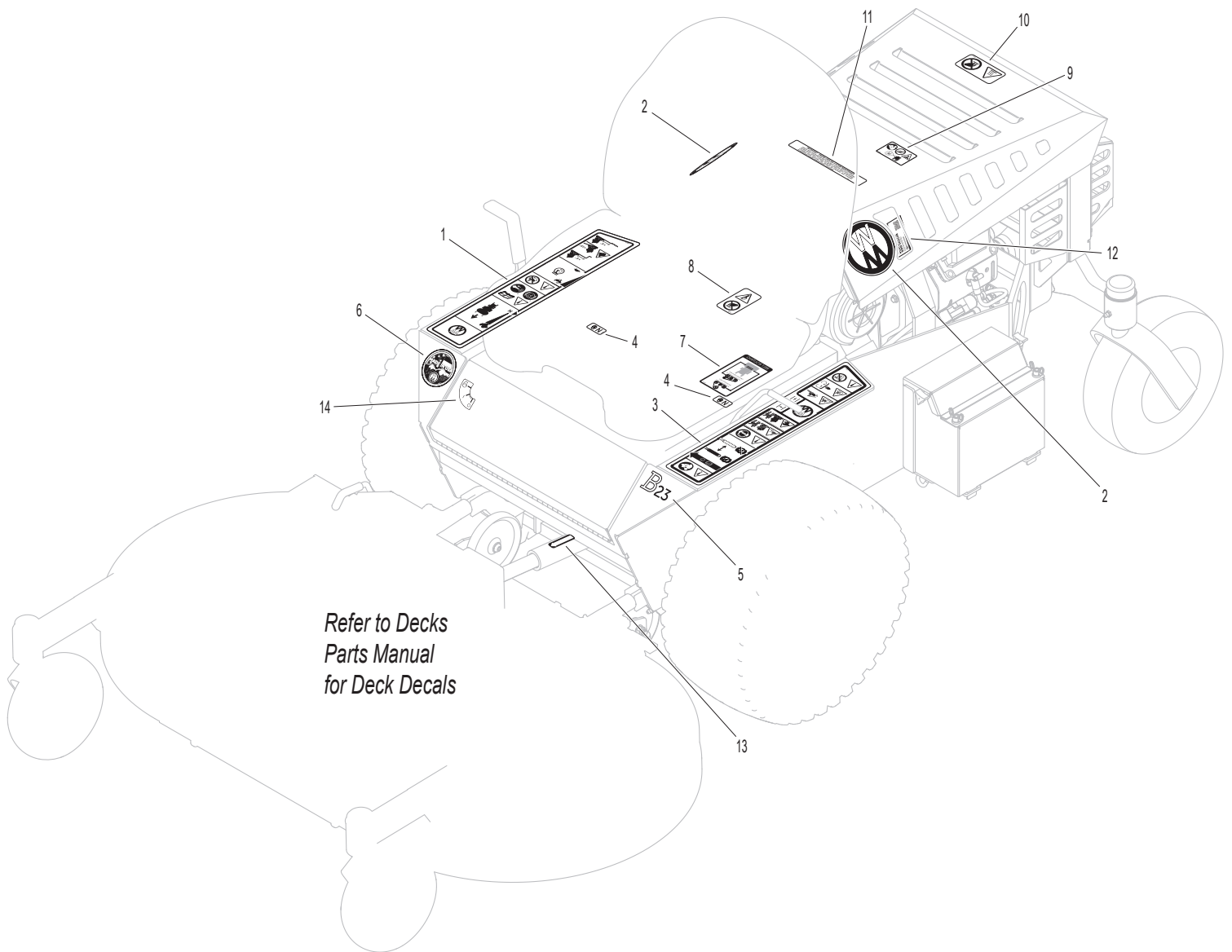
| <i>Section of Tractor Covered</i> | <i>Page</i> | <i>Section of Tractor Covered</i> | <i>Page</i> |
|---|-------------|--|-------------|
| <hr/> | | <hr/> | |
| Decals | | Electrical Components | |
| Tractor Decals | 2 | Electrical Assembly | 20 |
| Body / Chassis Assemblies | | Maintenance | |
| Front Body Assembly | 4 | Lubrication Points | 22 |
| Rear Body Assembly | 6 | Caster Wheel Fork Installation | 24 |
| Chassis Assembly | 8 | Wiring Schematic | 25 |
| Tractor Components | | Maintenance And Service Record Sheet | 26 |
| Main Component Power Transmission | 10 | Warranty | |
| Engine Group | 12 | Limited Warranty | 29 |
| Hydrostatic Ground Drive Assemblies | 14 | | |
| Steering Control Assemblies | 16 | | |
| Parking Brake Assembly | 18 | | |

TRACTOR DECALS

| ITEM NO. | PART NO. | DESCRIPTION | LOCATION | NO. REQ'D SD |
|--|----------|----------------------------|--|--------------|
| Walker Product and Operation Decals | | | | |
| 1 | 8600-48 | RH Fender | Chassis, RH Side Near Seat | 1 |
| 2 | 5800 | Decal, Round (4") | Rear Body (one on each side) | 2 |
| | 5800-9 | Decal, Round (4-3/4") | Utility Bed (one on each side) | 2 |
| 3 | 8600-78 | LH Fender | Chassis, LH Side Near Seat | 1 |
| 4 | 9804-1 | Axle Lockout | Chassis | 2 |
| 5 | 8821-31 | Decal, B23 | Chassis, Front | 1 |
| 6 | 5856-1 | Made In USA | Chassis, Front | 1 |
| Danger Decals Warning Decals Caution Decals | | | | |
| 7 | 4107-13 | Decal, Belt Routing | Front Body, Underside | 1 |
| 8 | 8600-2 | Decal, Rotating Components | Air Cleaner Mount | 1 |
| 9 | 8600-12 | Danger, Engine Exhaust | Rear Body, Underside or Utility Bed, Underside | 1 |
| 10 | 8600-5 | Caution, Engine Exhaust | Rear Body or Utility Bed | 1 |
| Maintenance Decals | | | | |
| 11 | 5855 | Important, Engine Cooling | Body Support | 1 |
| 12 | 6895-103 | Rehiko/Kohler 300 Hour Oil | Body Support, LH Side | 1 |
| 13 | 6875 | PTO Alignment Arrow | Universal Joint Tube Assembly | 1 |
| 14 | 8600-54 | Decal, Ignition Switch | Front Body | 1 |

NOTE: All parts requiring decals are shipped with decals applied.

TRACTOR DECALS



FRONT BODY ASSEMBLY

| ITEM NO. | PART NO. | DESCRIPTION | NO. REQ'D | ITEM NO. | PART NO. | DESCRIPTION | NO. REQ'D |
|--------------------------------|----------|--|-----------|---|----------|-----------------------------|-----------|
| Seat Assembly | | | | Fasteners | | | |
| 1 | 6104-31 | Comfort Seat | 1 | F004 | | 1/4-20 Keps Nut | 9 |
| 2 | 7440-5 | Shock Mount (1-1/4 x 3/4) | 4 | F005 | | 1/4-20 ESNA Nut | 2 |
| Body Assembly | | | | F009 | | 5/16-18 Whiz Locknut | 6 |
| 3 | 4100-9 | Front Body | 1 | F020 | | 5/16-18 ESNA Nut | 1 |
| 4 | 4100-7 | Spacer (1/4 x 3/8 x 3/4) | 2 | F029 | | 1/4-20 x 1/2 Hex Bolt | 2 |
| 5 | 5146 | 10mm Ball Stud | 2 | F093 | | 5/16-18 x 1 Hex Bolt | 1 |
| 6 | 4145-2 | Gas Spring Assembly (Includes Item # 5) | 1 | F116 | | 1/4-20 x 1-1/4 Hex Bolt | 2 |
| 7 | 5180 | Edge Molding / Lever Opening | 2 | F246 | | 1/4-20 x 1/2 PTHMS | 7 |
| 8 | 4504-2 | Hinge (17") | 1 | F341 | | Coil Roll Pin (7/64 x 9/16) | 1 |
| 9 | 5989-18 | Dome Plug (11/16) | 1 | F342 | | 5/16 Conical Washer | 2 |
| Tilt-Up Latch Assembly* | | | | * Complete Tilt-Up Latch Assembly Kit available by ordering kit # 5744-5. | | | |
| 10 | 5847 | Plastic Tip | 1 | | | | |
| 11 | 5744-20 | Spring Arm, Tilt-Up Latch | 1 | | | | |
| 12 | 5744-10 | Spring Pivot Bushing | 1 | | | | |
| 13 | 5744-15 | Compression Spring (3/8 x 5/8) | 1 | | | | |
| 14 | 5744-13 | Mount Angle, LH | 1 | | | | |
| 15 | 5744-12 | Hook, Tilt-Up Latch | 1 | | | | |
| 16 | 5744-14 | Mount Angle, RH | 1 | | | | |

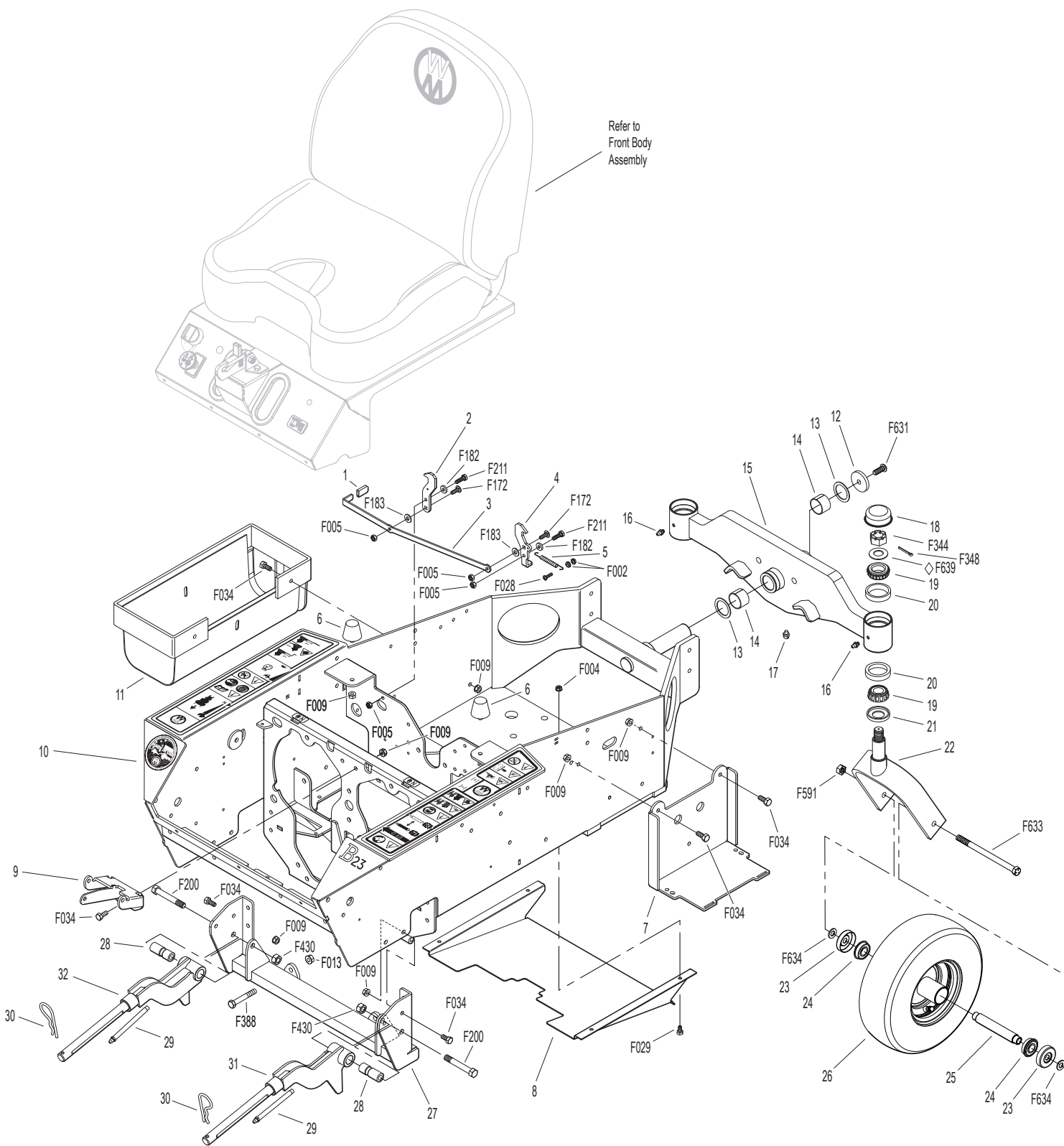
REAR BODY ASSEMBLY

| ITEM NO. | PART NO. | DESCRIPTION | NO. REQ'D | ITEM NO. | PART NO. | DESCRIPTION | NO. REQ'D |
|---------------------------|----------|--------------------------------------|-----------|------------------|----------|--------------------------------------|-----------|
| Utility Bed Option | | | | Fasteners | | | |
| 1 | 8650-13 | Bed Liner (19-1/4 x 22) | 1 | F004 | | 1/4-20 Keps Nut | 8 |
| 2 | 4650-2 | Utility Bed (Includes Items # 1 & 3) | 1 | F009 | | 5/16-18 Whiz Locknut | 11 |
| 3 | M112 | Edge Molding (17-5/8") | 1 | F029 | | 1/4-20 x 1/2 Hex Bolt | 6 |
| Rear Body Assembly | | | | F034 | | 5/16-18 x 3/4 Hex Bolt | 7 |
| 4 | 4105-13 | Rear Body | 1 | F093 | | 5/16-18 x 1 Hex Bolt | 2 |
| 5 | 4013-19 | Muffler Guard | 1 | F132 | | 1/4-20 x 2-3/4 Hex Bolt | 2 |
| 6 | 4013-9 | Body Pivot Plate | 2 | F226 | | 5/16-18 x 7/8 Hex Bolt | 2 |
| 7 | 4104-11 | Rear Body Support | 1 | F504 | | 1/4-20 Whiz Locknut | 2 |
| 8 | 5145-4 | Gas Spring Assembly | 1 | F551 | | 5/16-18 Flange Top Lock Nut | 4 |
| 9 | 5146 | 10mm Ball Stud | 2 | F582 | | Washer 5/16 x 7/8 x .125 | 3 |
| 10 | 4013-7 | Muffler Guard, LH | 1 | F643 | | 1/4-20 x 3/4 Carriage Bolt Flat Head | 2 |
| 11 | 4013-8 | Muffler Guard, RH | 1 | F645 | | 5/16-18 x 1-1/8 Hex Bolt | 2 |
| 12 | 4104-15 | Rear Body Cross Brace | 1 | | | | |
| 13 | 4104-13 | Body Support Brace | 1 | | | | |
| 14 | 4104-17 | Body Support | 1 | | | | |
| 15 | 7844 | Rubber Bumper (1.25 x .250) | 2 | | | | |

CHASSIS ASSEMBLY

| ITEM NO. | PART NO. | DESCRIPTION | NO. REQ'D | ITEM NO. | PART NO. | DESCRIPTION | NO. REQ'D | |
|-----------------------------------|----------|---|-----------|--|-------------------|---|-----------------------|---|
| Body Latch Assembly | | | | Deck Support Arm & Hitch Assemblies | | | | |
| 1 | 5854 | Plastic Tip | 1 | 27 | 4301-11 | Deck Arm Support Mount | 1 | |
| 2 | 7383-12 | Body Latch Hook, RH | 1 | 28 | 6840-3 | Support Arm Bushing (2-1/16) | 2 | |
| 3 | 7383-9 | Body Latch Trigger | 1 | 29 | 5830-1 | 5/16-24 4" Grease Fitting | 2 | |
| 4 | 7383-15 | Body Latch Hook, LH W/Spring Hole | 1 | 30 | 5775-2 | Hitch Pin (#6) | 2 | |
| 5 | 7222 | Extension Spring (1/4 x 3) | 1 | 31 | 4431-2 | Deck Support Arm, LH (Includes Item # 29) | 1 | |
| Chassis Assembly | | | | Fasteners | | | | |
| 6 | 5845 | Rubber Bumper (1.50 x 1.25) | 2 | | F002 | 10-24 Keps Nut | 2 | |
| 7 | 4910-9 | Battery Mount | 1 | | F004 | 1/4-20 Keps Nut | 4 | |
| 8 | 4301-13 | Debris Shield (Includes Items # F004 & F029) | 1 | | F005 | 1/4-20 ESNA Nut | 4 | |
| 9 | 4215-10 | Shock Mount / Body Lift Arm | 1 | | F009 | 5/16-18 Whiz Locknut | 12 | |
| 10 | 4305-7 | Chassis Frame | 1 | | F013 | 3/8-16 Whiz Locknut | 2 | |
| 11 | 2046 | Gas Tank Mount | 1 | | F028 | 10-24 x 3/4 PPHMS | 1 | |
| Spread Tail Wheel Assembly | | | | | | F029 | 1/4-20 x 1/2 Hex Bolt | 4 |
| 12 | 4401-4 | Washer (1-3/4 x 3/8 x 1/4 Thk) | 1 | | F034 | 5/16-18 x 3/4 Hex Bolt | 10 | |
| 13 | 4301-2 | Fiberglide Thrust Washer | 2 | | F172 | 1/4-20 x 3/4 Carriage Bolt | 2 | |
| 14 | 4301-3 | Fiberglide Bearing | 2 | | F182 | 1/4 x 5/8 x 1/8 Washer | 2 | |
| 15 | 4301-14 | Tail Wheel Pivot Axle (Includes Items # 14, 16 & 17) | 1 | | F183 | .312 x .700 x .074 Washer | 2 | |
| 16 | 5830 | Grease Fitting | 2 | | F200 | 7/16-20 x 3 Grade 8 Bolt | 2 | |
| 17 | 5830-4 | Grease Fitting (90 Deg.) | 1 | | F211 | 1/4-20 x 7/8 Hex Bolt | 2 | |
| 18 | 8769-8 | Dust Cap, Deck Caster | 2 | | F344 | 3/4-16 Slotted Hex Nut | 2 | |
| 19 | 8769-6 | Bearing Cone (1" ID) | 4 | | F348 | 1/8 x 1-1/2 Cotter Pin | 2 | |
| 20 | 8769-5 | Bearing Cup (2 x 1-5/8) | 4 | | F388 | 3/8-16 x 2-1/2 Hex Bolt | 2 | |
| 21 | 8769-7 | Seal | 2 | | F430 | 7/16-20 ESNA Nut | 2 | |
| 22 | 8765-14 | Caster Wheel Fork | 2 | | F591 | 7/16-14 Flange Top Lock Nut | 2 | |
| 23 | 8769-13 | Bearing Cup (7/16 ID) | 4 | | F631 | 3/8-16 x 1 Button Head Cap Screw | 1 | |
| 24 | 5037-1 | Bearing, Tail Wheel | 4 | | F633 | 7/16-14 x 6-1/2 Hex Bolt | 2 | |
| 25 | 5038-3 | Axle Spacer Tube (4.995) (.4375 ID) | 2 | | F634 | Washer .835 x .438 x .080 | 4 | |
| 26 | 8768-10 | Caster Wheel, Pneumatic (11 x 4-5 PR, BB) (Includes Items # 23-25 & F634) | 2 | | F639 | Belleville Washer (1.5 x .755 x .072) | 2 | |
| | 8768-8 | Tire, Pneumatic (11 x 4-5 6-Ply) | * | | | | | |
| | | | | * | Service Part Only | | | |

CHASSIS ASSEMBLY



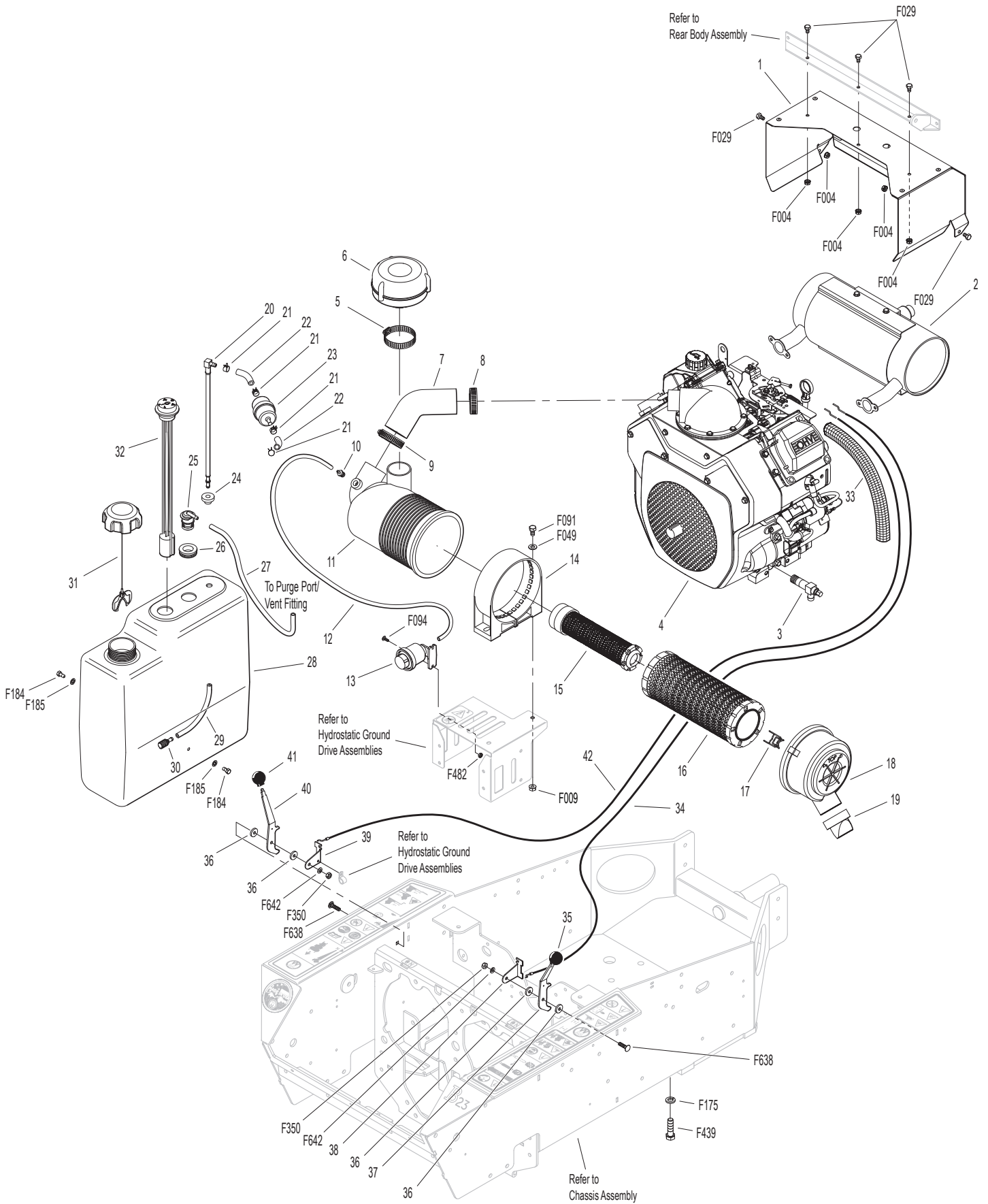
MAIN COMPONENT POWER TRANSMISSION

| ITEM NO. | PART NO. | DESCRIPTION | NO. REQ'D | ITEM NO. | PART NO. | DESCRIPTION | NO. REQ'D |
|---------------------------|----------|--|-----------|------------------|--------------------------------|-------------|-----------|
| PTO Drive Assembly | | | | Fasteners | | | |
| 1 | 4230-3 | PTO Drive Belt | 1 | F009 | 5/16-18 Whiz Locknut | | 12 |
| 2 | 5247-2 | V-Groove Idler (4") | 2 | F013 | 3/8-16 Whiz Locknut | | 3 |
| 3 | 6325-2 | Spacer Bushing (5/16) | 1 | F032 | 1/4-20 x 3/4 Hex Bolt | | 2 |
| 4 | 7201-3 | Fiberglide Bearing | 2 | F034 | 5/16-18 x 3/4 Hex Bolt | | 6 |
| 5 | 7201-7 | Inner Race (2-5/8) | 1 | F035 | 5/16-18 x 1-1/4 Hex Bolt | | 2 |
| 6 | 4325-16 | Idler Mount, RH | 1 | F040 | 3/8-16 x 1-1/2 Hex Bolt | | 1 |
| 7 | 4325-17 | Idler Pivot | 1 | F041 | 3/8-16 x 1-3/4 Hex Bolt | | 1 |
| 8 | 5146 | 10mm Ball Stud | 2 | F046 | 3/8-16 x 3-1/2 Hex Bolt | | 1 |
| 9 | 2215-6 | Pressure Dampener | 1 | F051 | 3/8 SAE Washer | | 2 |
| 10 | 4410-18 | Dampener Mount | 1 | F093 | 5/16-18 x 1 Hex Bolt | | 2 |
| 11 | 4325-15 | Idler Mount, LH | 1 | F153 | 3/16 x 3/16 x 1-1/4 Key | | 1 |
| 12 | 4411-6 | Drive Shaft Collar | 1 | F449 | Washer 1/2 x 1-5/8 x 1/4 | | 1 |
| 13 | 5830-3 | Grease Fitting (45 Deg.) | 1 | F451 | 1/2-20 Nylon Locknut | | 1 |
| 14 | 4411-9 | Drive Shaft | 1 | F472 | 1-14 LH Hex Nut | | 1 |
| 15 | 4410-17 | Clutch Stop | 1 | F551 | 5/16-18 Flange Top Lock Nut | | 1 |
| 16 | 4410-15 | Clutch | 1 | F569 | 1/4-20 Flange Top Lock Nut | | 2 |
| 17 | 4410-9 | Washer 1 x 1-5/8 x 1/4 | 1 | F647 | 5/16-18 x 2.0625 Hex Bolt GR 8 | | 1 |
| 18 | 5830 | Grease Fitting | 1 | | | | |
| 19 | 7275-16 | Universal Joint Tube Assembly / Spline | 1 | | | | |
| 20 | 4274-12 | PTO Drive Shaft Assembly / Spline | 1 | | | | |
| 21 | 4236-5 | PTO Drive Pulley | 1 | | | | |

ENGINE GROUP

| ITEM NO. | PART NO. | DESCRIPTION | NO. REQ'D | ITEM NO. | PART NO. | DESCRIPTION | NO. REQ'D |
|----------------------------|----------|--|-----------|---|----------|-----------------------------------|-----------|
| Engine Assembly | | | | Throttle & Choke Control Assemblies | | | |
| 1 | 4013-18 | Muffler Heat Shield | 1 | 33 | 8123-3 | Insultherm (3/8 x 10) | 1 |
| 2 | NS | Muffler | 1 | 34 | 5108-28 | Choke Cable (32-1/2") | 1 |
| 3 | 4010-1 | Drain Valve 3/8-18 NPTF | 1 | 35 | 5108-6 | Choke Control Knob, Black | 1 |
| 4 | NS | 23 HP Rehlko/Kohler Engine | 1 | 36 | 5108-10 | Friction Washer (.125) | 4 |
| Precleaner Assembly | | | | 37 | 5108-22 | Control Lever, Choke | 1 |
| 5 | 7840 | Hose Clamp (1-5/16 to 2-1/4) | 1 | 38 | 5108-38 | Control Bracket, Choke | 1 |
| 6 | 7026-4 | Remote Precleaner | 1 | 39 | 5108-21 | Control Bracket, Throttle | 1 |
| 7 | 6087-9 | Air Intake Hose | 1 | 40 | 5108-20 | Control Lever, Throttle | 1 |
| 8 | 7840-5 | Hose Clamp (1.56 to 2.50) | 1 | 41 | 5108-5 | Throttle Control Knob, Red | 1 |
| 9 | 6029 | Hose Clamp (1-13/16 to 2-3/4) | 1 | 42 | 5108-24 | Throttle Cable (56") | 1 |
| 10 | 5091-0 | 1/8 Pipe Thread Male W/Barb | 1 | Fasteners | | | |
| 11 | 4090-1 | Air Cleaner Assembly (Includes Items # 15-19) | 1 | F004 | | 1/4-20 Keps Nut | 5 |
| 12 | M258 | Vacuum Hose (13") | 1** | F009 | | 5/16-18 Whiz Locknut | 2 |
| 13 | 5091-19 | Air Flow Indicator W/Bracket (Vacuum 15" H2O) | 1 | F029 | | 1/4-20 x 1/2 Hex Bolt | 5 |
| 14 | 5088-4 | Air Cleaner Band | 1 | F049 | | 5/16 SAE Washer | 2 |
| 15 | 5090-7 | Safety Filter Insert | 1 | F091 | | 5/16-18 x 5/8 Hex Bolt | 2 |
| 16 | 5090-8 | Air Cleaner Cartridge | 1 | F094 | | 8-32 x 1/2 PTHMS | 2 |
| 17 | 5088-5 | Air Cleaner Draw Latch | 2 | F175 | | 1/2 Split Lock Washer | 4 |
| 18 | 4090-2 | Air Cleaner Cap | * | F184 | | 1/4-20 x 1/2 Hex Bolt, SS | 2 |
| 19 | 5090-2 | Vacuator Valve | 1 | F185 | | 1/4 Internal Star Lock Washer, SS | 2 |
| Fuel Tank Assembly | | | | F350 | | 1/4-20 LP Nylock | 2 |
| 20 | 5083-8 | Tank Tube (13") | 1 | F439 | | 1/2-13 x 1-3/4 Hex Bolt | 4 |
| 21 | 5879-3 | Hose Clamp (1/2) | 4 | F482 | | 8-32 Nylock Nut | 2 |
| 22 | M246 | Fuel Line (1/4 x 2-1/2") | 2** | F638 | | 1/4-20 x 1 Carriage Bolt | 2 |
| 23 | 5020-3 | Fuel Filter (9-12 Micron) | 1 | F642 | | 1/4 x .042 Belleville Washer | 2 |
| 24 | 5083-1 | Bushing, Rubber | 1 | * Service Part Only | | | |
| 25 | 8043-8 | Roll Over Valve | 1 | ** Required hose specifications: | | | |
| 26 | 5977-7 | Roll Over Grommet (.900 x 1-1/2) | 1 | M113 - 3/16" ID fuel/oil/vapor hose (Gates 4219-0093 or equivalent) | | | |
| 27 | M113 | Fuel Line (3/16 x 12") | 1** | M246 - 1/4" ID low permeation (<15g/m^2/day) fuel hose (Parker 38904 or equivalent) | | | |
| 28 | 8055-1 | Fuel Tank, 4.7 Gallon (Black) (Includes Items # 20, 24-26, 29, 30 & 32) | 1 | M258 - 7/64" ID automotive vacuum hose | | | |
| 29 | 5086-7 | Hose (1/4 x 6) | 1 | | | | |
| 30 | 5020-2 | Fuel Filter, In Tank | 1 | | | | |
| 31 | 5082-4 | 2-1/4 Ratchet Fuel Cap (EPA) | 1 | | | | |
| 32 | 8055-2 | Fuel Tank Gauge | 1 | | | | |

ENGINE GROUP



HYDROSTATIC GROUND DRIVE ASSEMBLIES

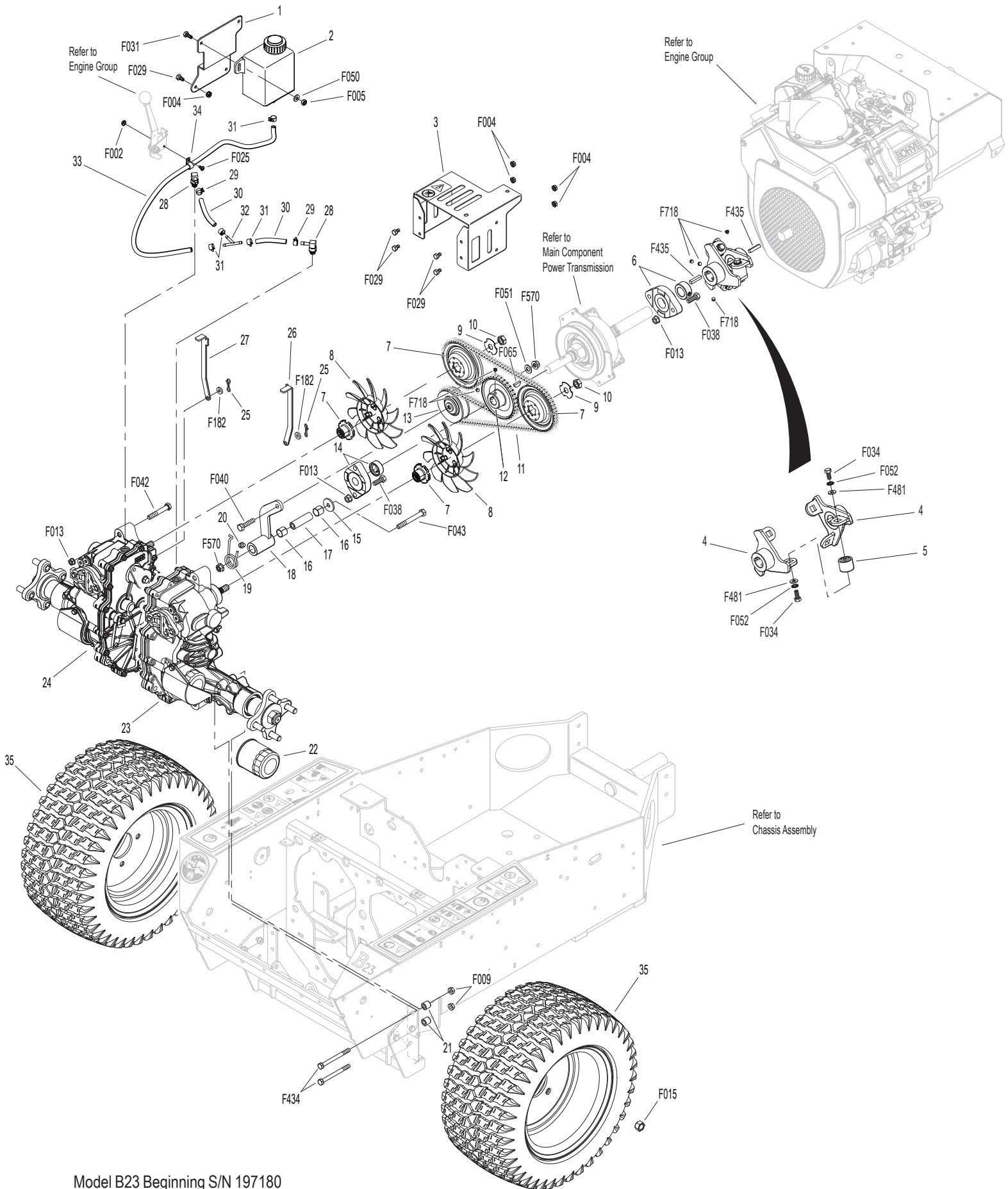
| ITEM NO. | PART NO. | DESCRIPTION | NO. REQ'D | ITEM NO. | PART NO. | DESCRIPTION | NO. REQ'D |
|--------------------------------|----------|---|-----------|------------------|--|-------------|-----------|
| Ground Drive Assemblies | | | | Fasteners | | | |
| 1 | 4023-4 | Oil Expansion Reservoir Mount | 1 | F002 | 10-24 Keps Nut | | 1 |
| 2 | 4023 | Oil Expansion Reservoir | 1 | F004 | 1/4-20 Keps Nut | | 6 |
| 3 | 4010-18 | Air Cleaner Mount | 1 | F005 | 1/4-20 ESNA Nut | | 2 |
| 4 | 2351-50 | Flex Coupler Half (Includes Items # F435 & F718) | 2 | F009 | 5/16-18 Whiz Locknut | | 4 |
| 5 | 2351-1 | Rubber Iso Coupler | 3 | F013 | 3/8-16 Whiz Locknut | | 6 |
| 6 | 4349-12 | Flanged Bearing (1") | 1 | F015 | 1/2-20 Wheel Lug Nut | | 8 |
| 7 | 4026-18 | Fan & Pulley Kit (Includes Items # 8-10) | 2 | F025 | 10-24 x 3/8 PPHMS | | 1 |
| 8 | 4026-13 | Hydro Pulley Fan | 2 | F029 | 1/4-20 x 1/2 Hex Bolt | | 6 |
| 9 | 5025-18 | Hydro Fan Washer | 2 | F031 | 1/4-20 x 5/8 Hex Bolt | | 2 |
| 10 | 5025-19 | Hydro Fan Nut | 2 | F034 | 5/16-18 x 3/4 Hex Bolt | | 6 |
| 11 | 4230-2 | Ground Drive Belt | 1 | F038 | 3/8-16 x 1 Hex Bolt | | 4 |
| 12 | 4240-1 | Drive Pulley (Includes Items # F065 & F718) | 1 | F040 | 3/8-16 x 1-1/2 Hex Bolt | | 1 |
| 13 | 4245 | Idler Pulley (3/A) | 1 | F042 | 3/8-16 x 2-1/4 Hex Bolt | | 2 |
| 14 | 6349-2 | Flanged Bearing (3/4") | 1 | F043 | 3/8-16 x 3 Hex Bolt | | 1 |
| 15 | 5841 | Retainer Washer (3/8 x 1-1/4) | 1 | F050 | 1/4 SAE Washer | | 2 |
| 16 | 7201-3 | Fiberglide Bearing | 2 | F051 | 3/8 SAE Washer | | 1 |
| 17 | 7201-5 | Inner Race (2-1/4) | 1 | F052 | 5/16 Ext. Star Lock Washer | | 6 |
| 18 | 4325-13 | Idler Arm (Includes Items # 16 & 20) | 1 | F065 | 3/16 x 3/4 Woodruff Key (#606) | | 1 |
| 19 | 7364-2 | Torsion Spring | 1 | F182 | 1/4 x 5/8 x 1/8 Washer | | 2 |
| 20 | 5830-3 | Grease Fitting (45 Deg.) | 1 | F434 | 5/16-18 x 3-1/2 Hex Bolt | | 4 |
| 21 | 9430-1 | Spacer Tube | 4 | F435 | 1/4 x 1/4 x 1-1/4 Key | | 2 |
| 22 | 2026-17 | Hydro-Gear® Oil Filter | 2 | F481 | Washer 5/16 x 1 x .125 | | 6 |
| 23 | 4025-35 | Hydro-Gear ZT-3100, LH | 1 | F570 | 3/8-16 Flange Top Lock Nut | | 2 |
| 24 | 4026-35 | Hydro-Gear ZT-3100, RH | 1 | F718 | 5/16-18 x 5/16 Set Screw (Knurl Point) | | 6 |
| 25 | 4407-4 | Bow Tie Cotter Pin | 2 | | | | |
| 26 | 2028-5 | Lockout Arm, LH | 1 | | | | |
| 27 | 2028-6 | Lockout Arm, RH | 1 | | | | |
| 28 | 2025-17 | Straight Thread Hose Fitting | 2 | | | | |
| 29 | 5879-2 | Hose Clamp (7/16 Silver) | 2 | | | | |
| 30 | M111 | Hose (1/4 x 3-1/4) | 2* | | | | |
| 31 | 5879-3 | Hose Clamp (1/2) | 4 | | | | |
| 32 | 8043-11 | 1/4 Barb Fitting "Y" Connector | 1 | | | | |
| 33 | M111 | Hose (1/4 x 27") | 1* | | | | |
| 34 | 5833-1 | Cable Clamp (1/4 x 1/4) | 1 | | | | |
| Wheel Assembly | | | | | | | |
| 35 | 5075-3 | LP Wheel & Tire Assembly (18 x 8.50-10) | 2 | | | | |
| | 8075-4 | LP Wheel & Tire (18 x 10.50-10) | ** | | | | |
| | 8070-12 | AT Wheel & Tire RH/LH (18 x 11.00-10) | ** | | | | |
| | 5076-3 | BT Wheel & Tire Assembly (20 x 10.00-10) | **Δ | | | | |

* **Required hose specifications:**
M111 - 1/4" ID fuel/oil/vapor hose (Gates 4219-0103 or equivalent)

** May be ordered as a factory-installed option or for dealer installation. Narrow Drive Tires are used when installing a 36" Deck. Contact your Walker dealer.

Δ Used only when Big Tire Option is installed

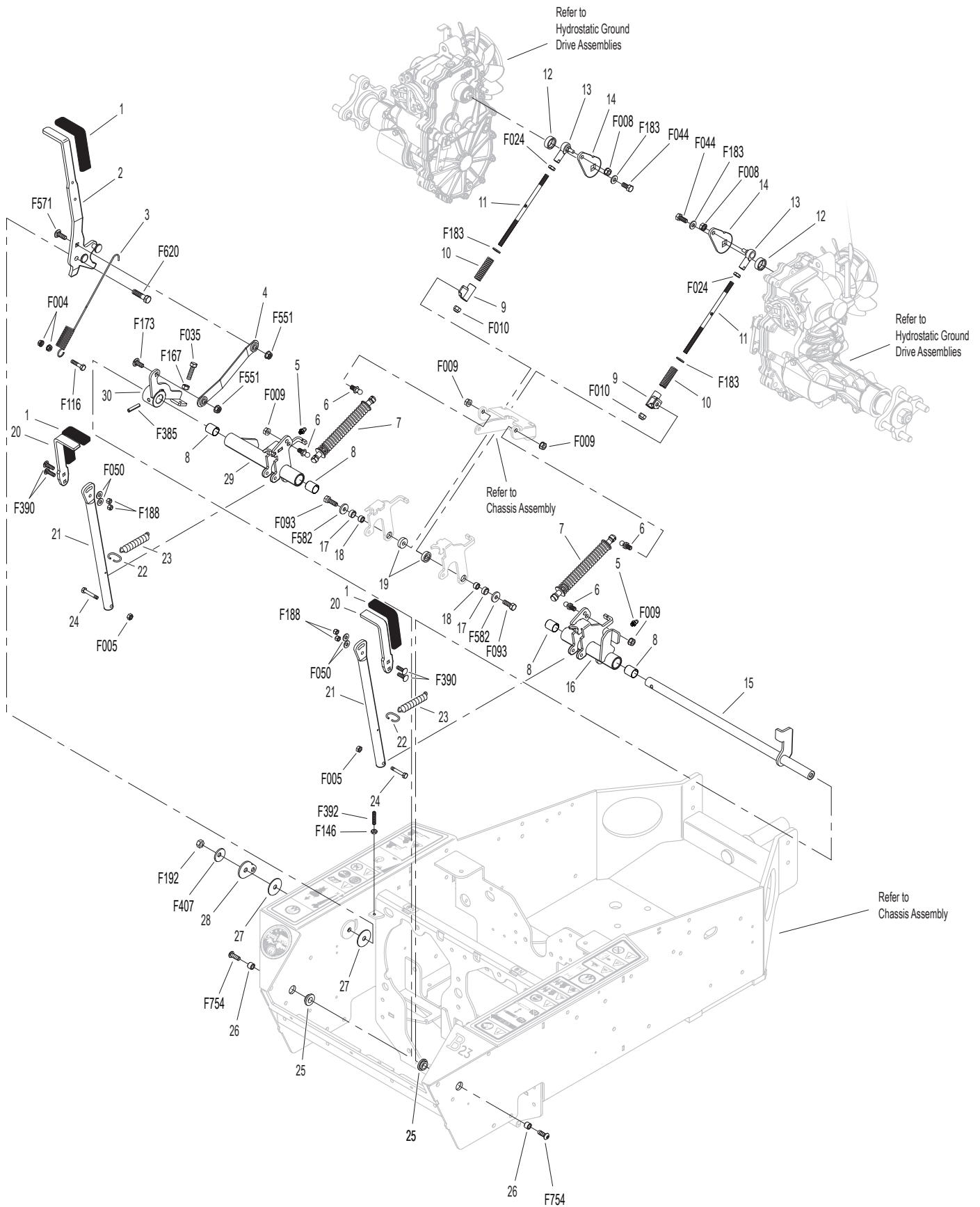
HYDROSTATIC GROUND DRIVE ASSEMBLIES



STEERING CONTROL ASSEMBLIES

| ITEM NO. | PART NO. | DESCRIPTION | NO. REQ'D | ITEM NO. | PART NO. | DESCRIPTION | NO. REQ'D |
|--|----------|---|-----------|------------------|----------|-------------------------------------|-----------|
| Steering Lever & FSC Assemblies | | | | Fasteners | | | |
| 1 | 5850-2 | Handle Grip, Foam (5-1/2) | 3 | F004 | | 1/4-20 Keps Nut | 2 |
| 2 | 4170-2 | FSC Lever | 1 | F005 | | 1/4-20 ESNA Nut | 2 |
| 3 | 4219-1 | Extension Spring | 1 | F008 | | 5/16-24 Keps Nut | 2 |
| 4 | 4170-3 | FSC Linkage | 1 | F009 | | 5/16-18 Whiz Locknut | 4 |
| 5 | 5830 | Grease Fitting | 2 | F010 | | 5/16-24 ESNA Nut | 2 |
| 6 | 5146 | 10mm Ball Stud | 4 | F024 | | 5/16-24 Jam Nut | 2 |
| 7 | 4199-4 | Steering Lever Dampener Assembly | 2 | F035 | | 5/16-18 x 1-1/4 Hex Bolt | 1 |
| 8 | 8201-3 | Fiberglide Bearing | 4 | F044 | | 5/16-24 x 3/4 Hex Bolt | 2 |
| 9 | 5463-7 | Steering Lever Actuator | 2 | F050 | | 1/4 SAE Washer | 4 |
| 10 | 5665-1 | Compression Spring (2-1/2) | 2 | F093 | | 5/16-18 x 1 Hex Bolt | 2 |
| 11 | 2213 | Control Rod (7) | 2 | F116 | | 1/4-20 x 1-1/4 Hex Bolt | 1 |
| 12 | 2212-3 | Seal Retainer | 2 | F146 | | 1/4-20 Jam Nut | 1 |
| 13 | 5214-2 | Ball Joint (5/16-24) (Nylon Lined) | 2 | F167 | | 5/16-18 Hex Nut | 1 |
| 14 | 6212-4 | Transmission Control Arm | 2 | F173 | | 5/16-18 x 3/4 Carriage Bolt | 1 |
| 15 | 4451-16 | Steering Pivot Shaft W/Stop | 1 | F183 | | .312 x .700 x .074 Washer | 4 |
| 16 | 6451-1 | Speed Control Actuator, LH (Includes Items # 5 & 8) | 1 | F188 | | 1/4-20 Self-Locking Nut | 4 |
| 17 | 7201-2 | Fiberglide Bearing (1/2") | 2 | F192 | | 3/8-24 Self-Locking Nut | 1 |
| 18 | 5463-5 | Steering Arm Pivot Bushing (SS) | 2 | F385 | | 1/4 x 1-1/4 Roll Pin | 1 |
| 19 | 5463-6 | Washer (5/16 x 3/4 x .250) | 2 | F390 | | 1/4-20 x 7/8 Carriage Bolt | 4 |
| 20 | 5453-14 | Steering Lever Handle / Adjustable (Includes Items # 1, F050, F188 & F390) | 2 | F392 | | 1/4-20 x 1 Set Screw, SS | 1 |
| 21 | 6452-1 | Steering Lever Tube W/Tab | 2 | F407 | | Belleville Washer 3/8 x 1.187, SS | 1 |
| 22 | 5450 | D-Clip | 2 | F551 | | 5/16-18 Flange Top Lock Nut | 2 |
| 23 | 5222 | Extension Spring (1/2 x 3-1/4) | 2 | F571 | | 5/16-18 x 7/8 Carriage Bolt | 1 |
| 24 | 4452-6 | Steering Pivot (1/4-20 x 1-5/8) | 2 | F582 | | Washer 5/16 x 7/8 x .125 | 2 |
| 25 | 9704-4 | Pivot Rod Bushing | 2 | F620 | | 3/8-24 x 1-1/2 Hex Bolt | 1 |
| 26 | 5463-8 | Pivot Bushing, SS (.5 x .313 x .350) | 2 | F754 | | 5/16-18 x 7/8 Button Head Cap Screw | 2 |
| 27 | 5141 | FSC Friction Washer (1-1/2 x 3/8 x 1/16) | 2 | | | | |
| 28 | 4142-1 | FSC Cam | 1 | | | | |
| 29 | 6451-4 | Speed Control Actuator, RH (Includes Items # 5 & 8) | 1 | | | | |
| 30 | 4451-17 | FSC Friction Actuator | 1 | | | | |

STEERING CONTROL ASSEMBLIES

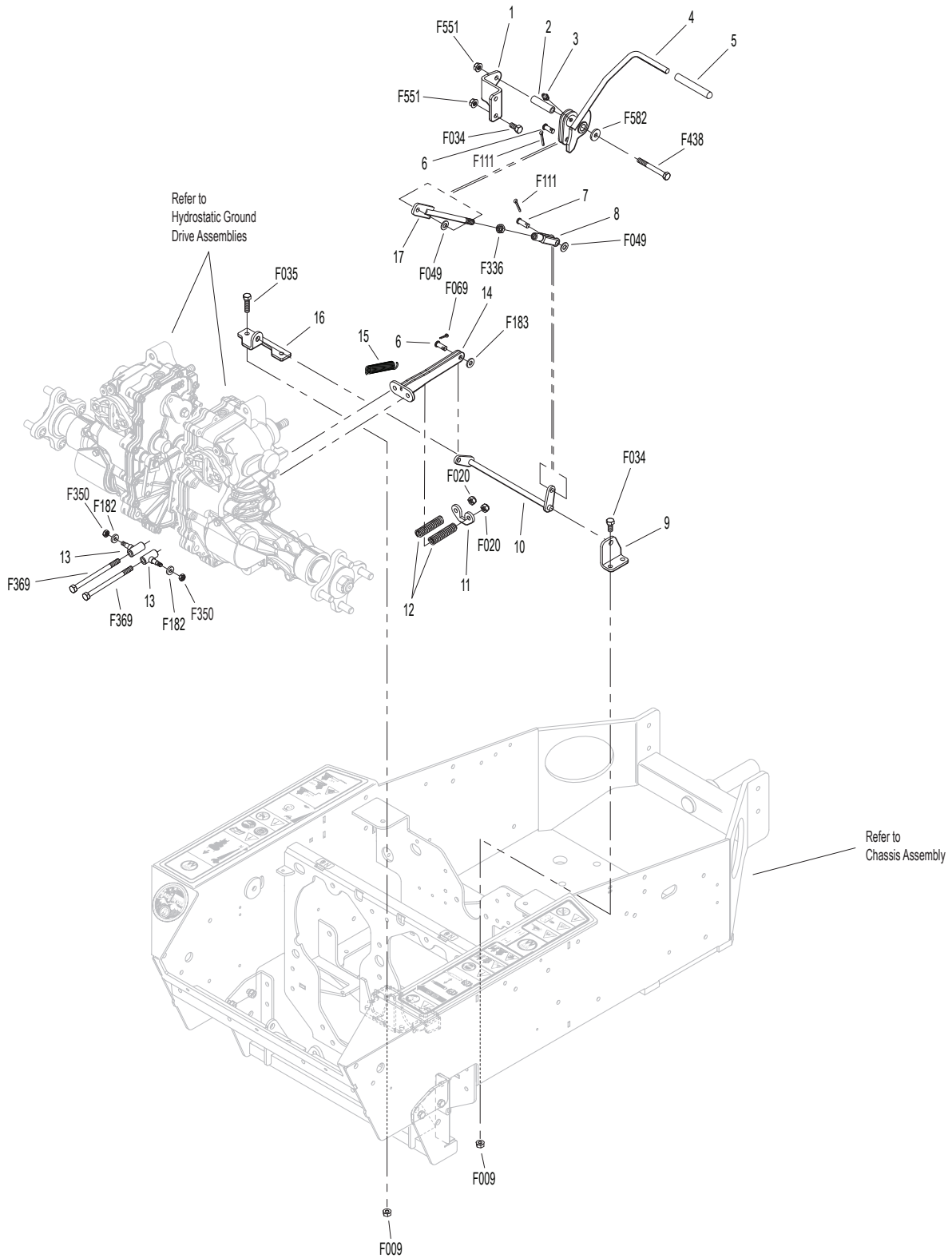


Model B23 Beginning S/N 197180
 Use only genuine **Walker®** replacement parts.

PARKING BRAKE ASSEMBLY

| ITEM NO. | PART NO. | DESCRIPTION | NO. REQ'D | ITEM NO. | PART NO. | DESCRIPTION | NO. REQ'D |
|-------------------------------|----------|---|-----------|------------------|----------|-----------------------------|-----------|
| Parking Brake Assembly | | | | Fasteners | | | |
| 1 | 4401-5 | Brake Pivot Bracket | 1 | F009 | | 5/16-18 Whiz Locknut | 4 |
| 2 | 7201-11 | Inner Race (1.938) | 1 | F020 | | 5/16-18 ESNA Nut | 2 |
| 3 | 5830 | Grease Fitting | 1 | F034 | | 5/16-18 x 3/4 Hex Bolt | 5 |
| 4 | 4406-52 | Parking Brake Lever (Includes Item # 5) | 1 | F035 | | 5/16-18 x 1-1/4 Hex Bolt | 2 |
| 5 | 7406-1 | Handle Grip, Red | 1 | F049 | | 5/16 SAE Washer | 2 |
| 6 | 8655-4 | Clevis Pin (5/16 x 3/4) | 2 | F069 | | 3/32 x 1/2 Cotter Pin | 1 |
| 7 | 5281-2 | Clevis Pin (5/16 x 7/8) | 1 | F111 | | 1/8 x 3/4 Cotter Pin | 2 |
| 8 | 2280 | Clevis (3/8) | 1 | F182 | | 1/4 x 5/8 x 1/8 Washer | 2 |
| 9 | 4401-7 | Parking Brake Pivot | 1 | F183 | | .312 x .700 x .074 Washer | 1 |
| 10 | 4407-6 | Parking Brake Actuator | 1 | F336 | | 3/8-16 Jam Nut | 1 |
| 11 | 4407-27 | Parking Brake Bolt Stabilizer | 1 | F350 | | 1/4-20 LP Nylock | 2 |
| 12 | 5665-1 | Compression Spring (2-1/2) | 2 | F369 | | 5/16-18 x 4-1/2 Hex Bolt | 2 |
| 13 | 5463 | Steering Lever Actuator | 2 | F438 | | 5/16-18 x 2-3/4 Hex Bolt | 1 |
| 14 | 4407 | Parking Brake Link | 1 | F551 | | 5/16-18 Flange Top Lock Nut | 3 |
| 15 | 5222 | Extension Spring (1/2 x 3-1/4) | 1 | F582 | | Washer 5/16 x 7/8 x .125 | 1 |
| 16 | 4401-9 | Parking Brake Mount | 1 | | | | |
| 17 | 4401 | Parking Brake Actuator Push | 1 | | | | |

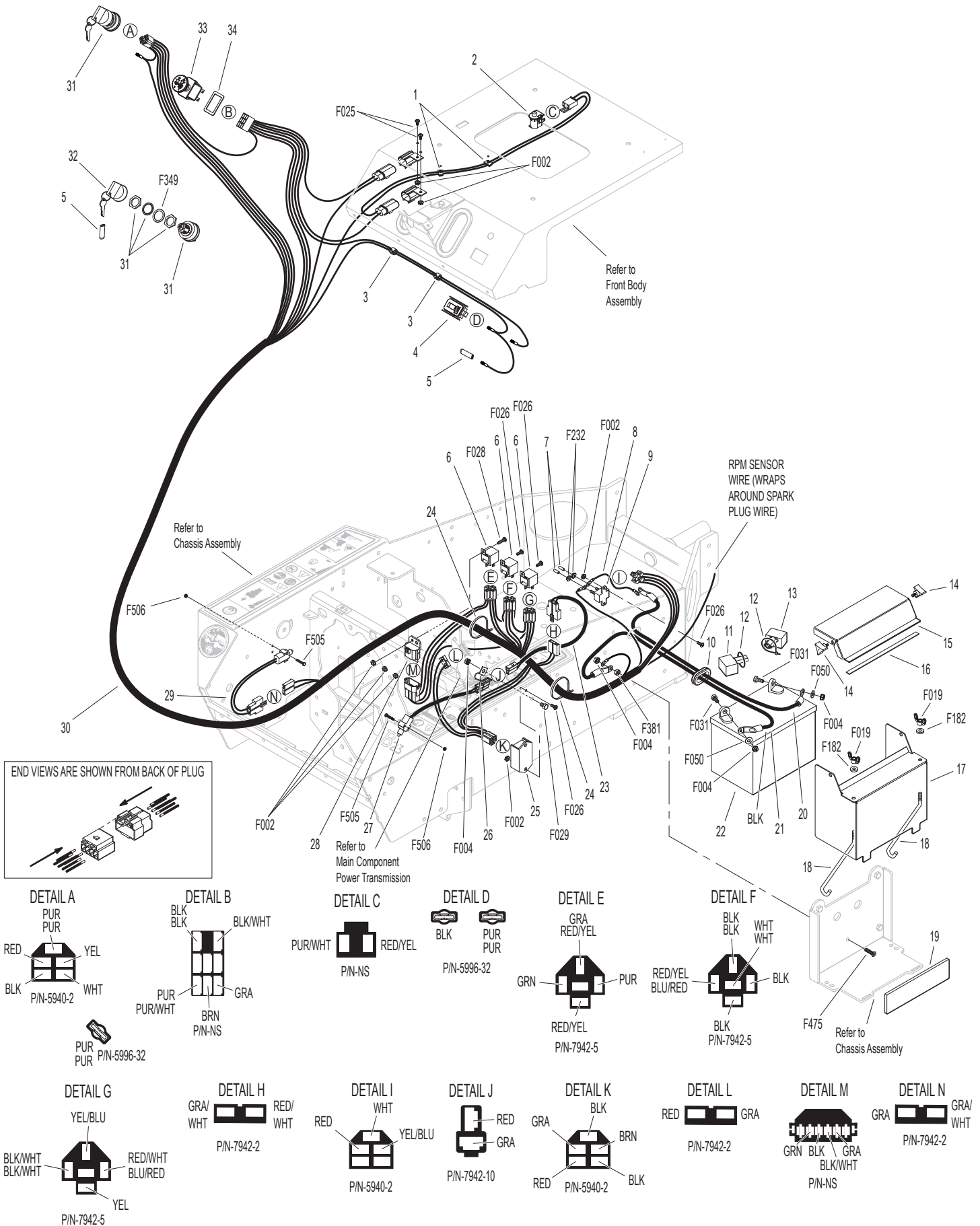
PARKING BRAKE ASSEMBLY



ELECTRICAL ASSEMBLY

| ITEM NO. | PART NO. | DESCRIPTION | NO. REQ'D | ITEM NO. | PART NO. | DESCRIPTION | NO. REQ'D |
|----------------------------|----------|---|-----------|------------------|----------|-----------------------------|-----------|
| Electrical Assembly | | | | Fasteners | | | |
| 1 | 7834-3 | Wire Saddle (3 Wires) | 2 | F002 | | 10-24 Keps Nut | 9 |
| 2 | 6104-11 | Seat Switch (NO) | 1 | F004 | | 1/4-20 Keps Nut | 4 |
| 3 | 5832 | Cable Clamp (1/2) | 2 | F019 | | 1/4-20 ESNA Wing Nut | 2 |
| 4 | 8990-1 | Hourmeter (Global) | 1 | F025 | | 10-24 x 3/8 PPHMS | 2 |
| 5 | 7854 | Plastic Tip, Red | 2 | F026 | | 10-24 x 1/2 PPHMS | 6 |
| 6 | 6941-9 | Relay Switch 30/40 Amp | 3 | F028 | | 10-24 x 3/4 PPHMS | 1 |
| 7 | 8404-8 | Plastic Cover, Red | 2 | F029 | | 1/4-20 x 1/2 Hex Bolt | 1 |
| 8 | 4940-11 | Jumper Wire | 1 | F031 | | 1/4-20 x 5/8 Hex Bolt | 2 |
| 9 | 8941 | Circuit Breaker (30 Amp) Auto Reset/Sealed | 1 | F050 | | 1/4 SAE Washer | 2 |
| 10 | 7977-4 | Grommet (7/8 x 1-1/4 x 3/16) | 1 | F182 | | 1/4 x 5/8 x 1/8 Washer | 2 |
| 11 | 5932 | Battery Terminal Insulation Black (-) | 1 | F232 | | 10-32 Keps Nut | 2 |
| 12 | 5975-1 | Cable Tie (18# x 3-3/4") | 2 | F349 | | Washer .835 ID 1.122 OD, SS | 1 |
| 13 | 5933 | Battery Terminal Insulation Red (+) | 1 | F381 | | 1/4-20 Hex Nut | 1 |
| 14 | 2703-5 | Knob, 10-24 x 1/2 | 2 | F475 | | 1/4-20 x 1 PFH Screw | 1 |
| 15 | 4910-11 | Cover Plate With Foam (Includes Item # 16) | 1 | F505 | | 6-32 x 7/8 Hex Trim MS, SS | 4 |
| 16 | 8790-1 | Rubber Strip | 1 | F506 | | 6-32 Nylock Nut | 4 |
| 17 | 4910-10 | Battery Hold Down Bracket | 1 | | | | |
| 18 | 5839 | Hook Bolt | 2 | | | | |
| 19 | 5910-6 | Battery Spacer Pad | 1 | | | | |
| 20 | 4940-26 | Battery Cable, 15" (+) | 1 | | | | |
| 21 | 6923-4 | Battery Cable, 13-1/2" (-) | 1 | | | | |
| 22 | 7910-3 | Battery (12V/350A CCA) | 1 | | | | |
| 23 | 4940-28 | Extension Wire Harness, Parking Brake | 1 | | | | |
| 24 | 5975-3 | Cable Tie (50# x 7") | 2 | | | | |
| 25 | 4410-16 | Soft Start Control | 1 | | | | |
| 26 | 5835-1 | Clamp Half (1/4) | 1 | | | | |
| 27 | 5942-20 | Safety Switch (NO) | 1 | | | | |
| 28 | 7948-6 | Time Delay Module | 1 | | | | |
| 29 | 5942-8 | Safety Switch (NO), Delta Side Mount | 1 | | | | |
| 30 | 4940-25 | Wire Harness | 1 | | | | |
| 31 | 8960-15 | Ignition Switch W/Keys (Includes Items # 5, 32 & F349) | 1 | | | | |
| 32 | 8960-3 | Key Set W/Umbrella | 1 | | | | |
| 33 | 4950 | PTO Switch | 1 | | | | |
| 34 | 4950-11 | PTO Switch Spacer | 1 | | | | |

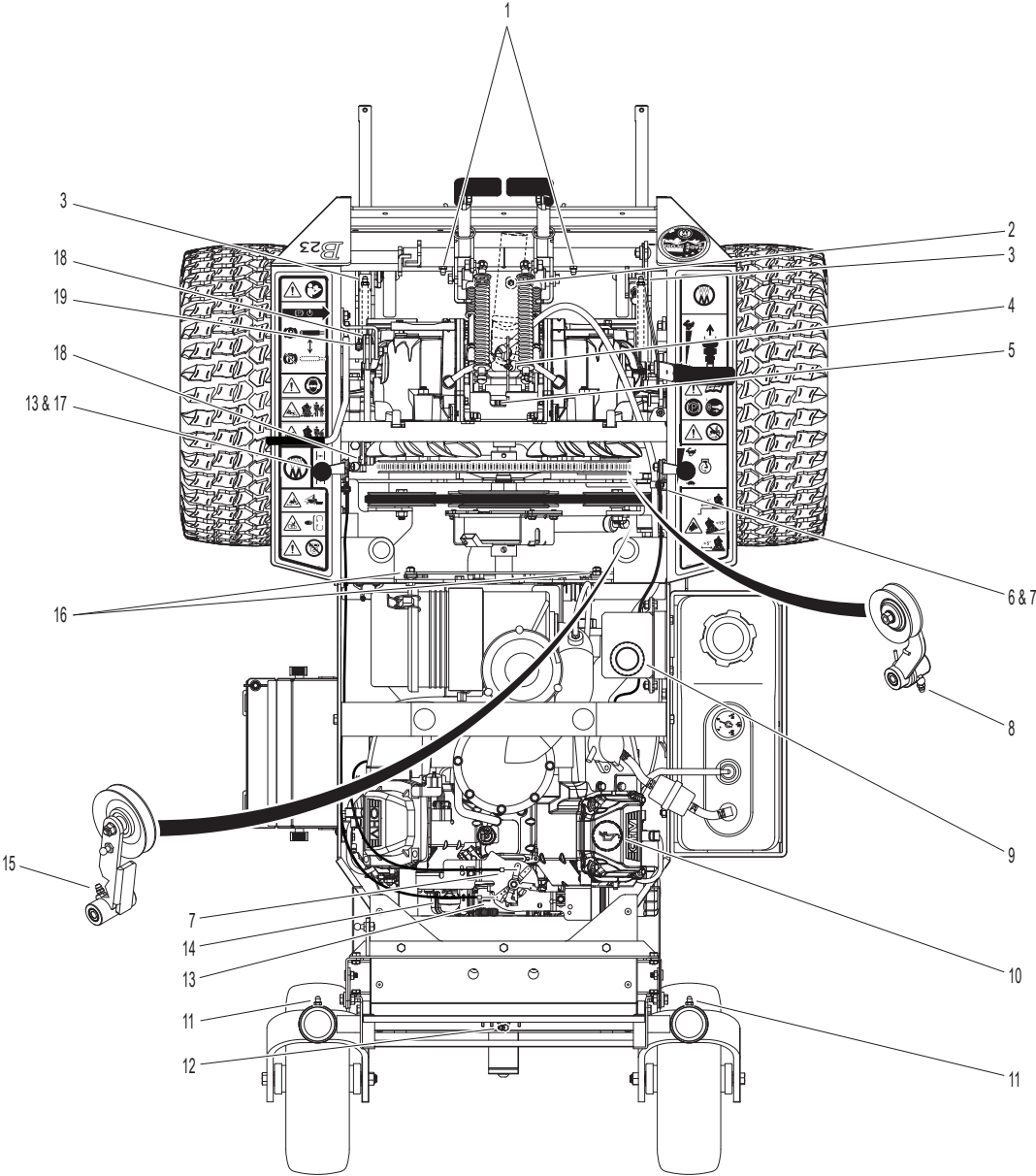
ELECTRICAL ASSEMBLY



LUBRICATION POINTS

| ITEM NO. | LOCATION | LUBRICATION TYPE | NO. PLACES | ITEM NO. | LOCATION | LUBRICATION TYPE | NO. PLACES |
|---------------------------|---|------------------|------------|---|--------------------------------|------------------|------------|
| Lubrication Points | | | | | | | |
| 1 | Steering Lever Pivot | Grease | 2 | 13 | Choke Control Cable Ends | Oil | 2 |
| 2 | Deck-to-PTO Coupling (Grease Spline Slide Area) | Grease | 1 | 14 | Engine Dipstick | Oil** | 1 |
| 3 | Deck Support Arm Pivot | Grease | 2 | 15 | PTO Belt Tightener Idler Pivot | Grease | 1 |
| 4 | Universal Joint Tube Assembly | Grease* | 1 | 16 | Body Latch Pivot | Oil | 2 |
| 5 | Universal Joint Quick Connect Spline (Grease Slide Area) | Grease | 1 | 17 | Choke Control Pivot | Oil | 1 |
| 6 | Throttle Control Pivot | Oil | 1 | 18 | Parking Brake Clevis | Oil | 2 |
| 7 | Throttle Control Cable Ends | Oil | 2 | 19 | Parking Brake Lever Pivot | Grease | 1 |
| 8 | Ground Drive Idler Pivot | Grease | 1 | * Grease every 25 hours. | | | |
| 9 | Transaxle Oil Reservoir | Oil/20W-50 | 1 | ** Refer to B23 Operator's Manual for procedure for checking and changing oil in Engine Crankcase. | | | |
| 10 | Engine Oil Fill | Oil** | 1 | NOTE: See Model B23 Operator's Manual (P/N 4000-48) for proper lubrication intervals. | | | |
| 11 | Tail Wheel Caster Fork Pivot | Grease | 2 | | | | |
| 12 | Rear Axle Pivot | Grease | 1 | | | | |

LUBRICATION POINTS



CASTER WHEEL FORK INSTALLATION

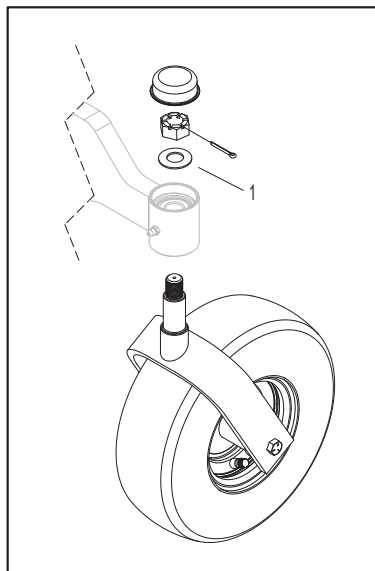
| ITEM NO. | DESCRIPTION | ITEM NO. | DESCRIPTION |
|----------|-------------|----------|-------------|
|----------|-------------|----------|-------------|

Caster Wheel Fork Assembly

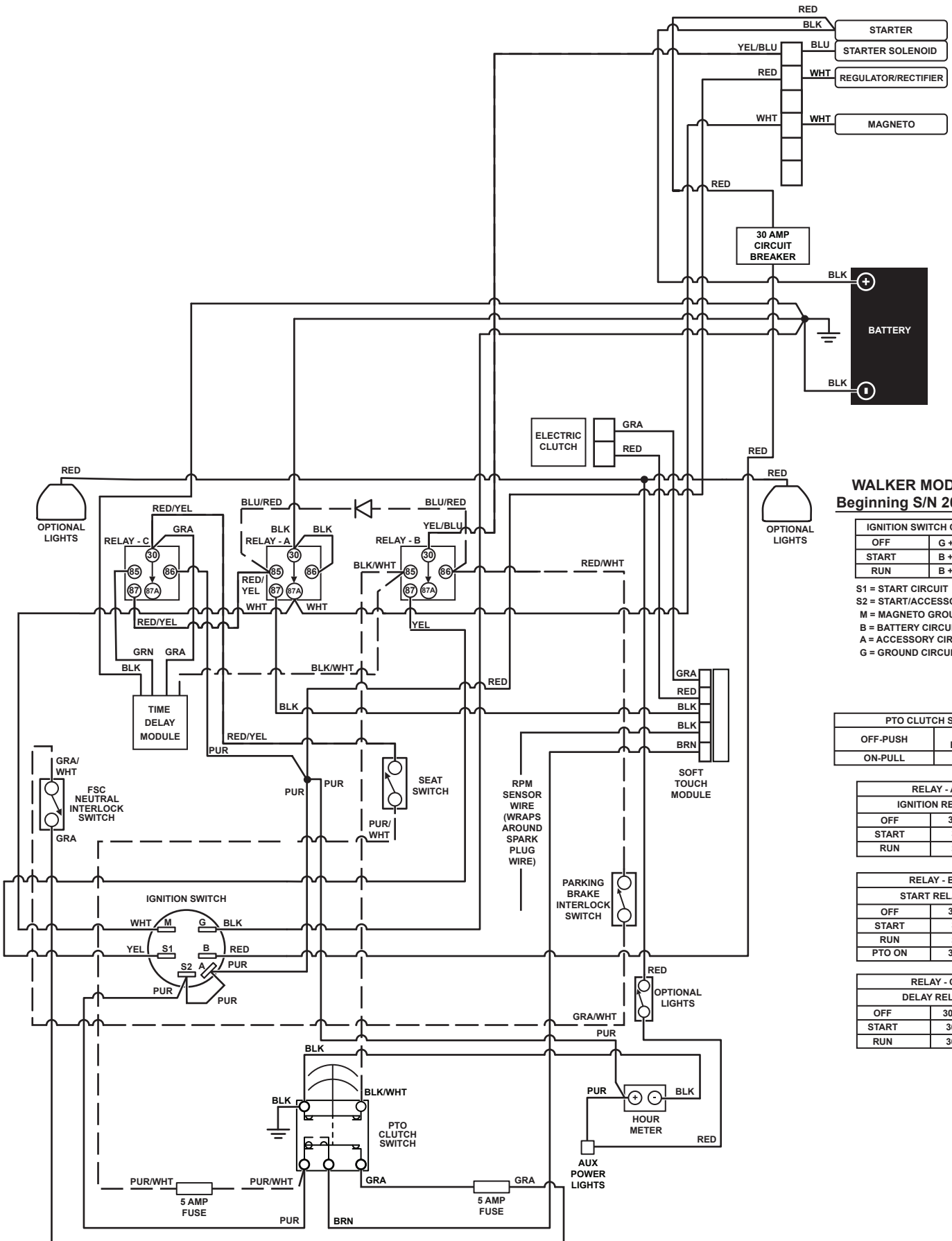
- 1 Installing the Caster Fork with a Belleville Washer:
 - a. Install the fork up into the bearing housing through the lower and upper tapered roller bearings. Rotate the fork as the seal is engaging onto the shaft to prevent the seal lip from rolling.
 - b. Place a Belleville washer onto the fork shaft with the cupped side of the washer down against the bearing, and thread the slotted hex nut finger-tight onto the shaft.
 - c. Using a wrench or socket, tighten the slotted hex nut by hand only until the Belleville washer is fully compressed, which is felt as a distinct increase in the amount of force required to turn the nut.
 - d. Back the nut off one to two notches until the cotter pin hole is visible, and install the cotter pin to lock the nut in place.

NOTE: The tension of the compressed Belleville washer provides the correct amount of bearing pre-load and will remain consistent with use. Do not over-tighten the nut, which will bind the caster pivot and cause unnecessary turning friction.

Tail Wheel Pivot Assembly



WIRING SCHEMATIC



WALKER MODEL B23 Beginning S/N 2026-197180

| IGNITION SWITCH CIRCUITS | |
|--------------------------|-----------------|
| OFF | G + M |
| START | B + A / S1 + S2 |
| RUN | B + A |

S1 = START CIRCUIT
 S2 = START/ACCESSORY CIRCUIT
 M = MAGNETO GROUND CIRCUIT
 B = BATTERY CIRCUIT
 A = ACCESSORY CIRCUIT
 G = GROUND CIRCUIT

| PTO CLUTCH SWITCH | |
|-------------------|--------------------------|
| OFF-PUSH | PUR + GRA BLK+BLK/WHT |
| ON-PULL | PUR+BRN |

| RELAY - A IGNITION RELAY | |
|-----------------------------|----------|
| OFF | 30 + 87A |
| START | 30 + 87 |
| RUN | 30 + 87 |

| RELAY - B START RELAY | |
|--------------------------|----------|
| OFF | 30 + 87A |
| START | 30 + 87 |
| RUN | 30 + 87 |
| PTO ON | 30 + 87A |

| RELAY - C DELAY RELAY | |
|--------------------------|----------|
| OFF | 30 + 87A |
| START | 30 + 87 |
| RUN | 30 + 87 |

Model B23 Beginning S/N 197180
Use only genuine **Walker**® replacement parts.

LIMITED WARRANTY FOR WALKER MODEL B23 RIDER MOWERS

1. WHAT THIS WARRANTY COVERS, AND FOR HOW LONG:

Walker Manufacturing company will, at its option, repair or replace, without charge, any part covered by this warranty which is found to be defective in material and/or workmanship within two (2) years* after the date of sale to the original retail purchaser unless the product is used for rental purposes, in which case this warranty is limited to ninety (90) days. At Walker's request, customer will make the defective part available for inspection by Walker and/or return the defective part to Walker, transportation charges prepaid. All parts and components of the Walker Mower are covered by this warranty **except** the following components which are warranted separately by their respective manufacturers:

Rehiko/Kohler Engine

The available warranties covering these items are furnished with each mower. Walker does not assume any warranty obligation, liability or modification for these items, which are covered exclusively by the stated warranty of the respective manufacturers noted above.

The Fulbat battery comes with a one (1) year warranty from the date of sale to the original retail purchaser. Warranty claims for the battery are administered through Walker Manufacturing.

★ Extended warranties are offered for the following powertrain components:

- Hydro-Gear offers a two (2) year or 2000 hour (whichever comes first) warranty for the ZT-3100 Hydrostatic transaxle which covers full cost of replacement up to 1000 hours of use, and after 1000 hours warranty coverage is prorated against 2000 hours. This warranty is administered through Walker Manufacturing.

2. WHAT THIS WARRANTY DOES NOT COVER:

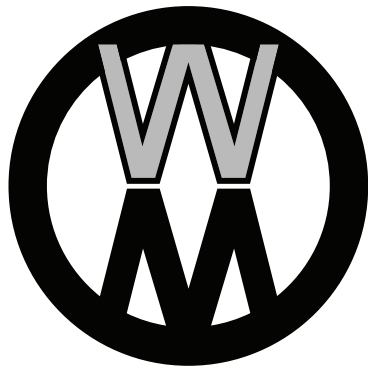
- A. This warranty does not cover defects caused by depreciation or damage caused by normal wear, accidents, improper maintenance, improper use or abuse of the product, alterations, or failure to follow the instructions contained in the Owner's Manual for operation and maintenance.
- B. The customer shall pay any charges for making service calls and/or for transporting the mower to and from the place where the inspection and/or warranty work is performed.

3. HOW TO OBTAIN SERVICE UNDER THIS WARRANTY:

Warranty service can be arranged by contacting the dealer where you purchased the mower or by contacting Walker Manufacturing Company, 5925 East Harmony Road, Ft. Collins, CO 80528. Proof of the date of purchase may be required to verify warranty coverage.

4. WARRANTY LIMITATION:

- A. **THERE IS NO OTHER EXPRESS WARRANTY. ANY WARRANTY THAT MAY BE IMPLIED FROM THIS PURCHASE INCLUDING MERCHANTABILITY AND FITNESS FOR A PARTICULAR PURPOSE IS HEREBY LIMITED TO THE DURATION OF THIS WARRANTY AND TO THE EXTENT PERMITTED BY LAW ANY AND ALL IMPLIED WARRANTIES ARE EXCLUDED.** Some states do not allow limitations on how long an implied warranty lasts, so the above limitations may not apply to you.
- B. **WALKER WILL NOT BE LIABLE FOR ANY INCIDENTAL, CONSEQUENTIAL, OR SPECIAL DAMAGES AND/OR EXPENSES IN CONNECTION WITH THE PURCHASE OR USE OF THE MOWER.** Some states do not allow the exclusion or limitation of incidental or consequential damages, so the above limitation(s) or exclusion(s) may not apply to you.
- C. Only the warranty expressed in this limited warranty shall apply and no dealer, distributor, or individual is authorized to amend, modify, or extend this warranty in any way. Accordingly, additional statements such as dealer advertising or presentations, whether oral or written, do not constitute warranties by Walker, and should not be relied upon.
- D. This warranty gives you specific legal rights, and you may also have other rights which vary from state to state.



WALKER

WALKER MFG. CO. • 5925 E. HARMONY ROAD, FORT COLLINS, CO 80528 • (970) 221-5614
FORM NO. 052126 PRINTED IN USA www.walker.com ©2026 WALKER MFG. CO