



# WALKER

## Illustrated Parts Manual

# *B*27ix



Beginning S/N: 196174  
P/N 4000-50

# KEY TO ABBREVIATIONS USED IN THIS MANUAL

<i>Abbreviation</i>	<i>What it Represents</i>
° (Dimension)	Degrees (Angle)
" (Dimension)	inches
(-)	Negative (Polarity)
(+)	Positive (Polarity)
-1 (as deck style designation)	Standard (Aluminum) Gear Drive Deck
-2 (as deck style designation)	Heavy Duty (Cast Iron) Gear Drive Deck
-3 (as deck style designation)	Belt Drive Deck
AT	All-Terrain
CCW	Counter-clockwise
CW	Clockwise
D	Diameter
DC	Deck, Collection (number refers to size in inches)
DM	Deck, Mulching (number refers to size in inches)
DR	Deck, Rear Discharge (number refers to size in inches)
DS	Deck, Side Discharge (number refers to size in inches)
DU	Garlock (Bearing)
ESNA (Fastener)	Nylon Insert Locknut
FSC	Forward Speed Control
GA	Gauge
gal.	gallon
GHS	Grass Handling System
GR (Fastener)	Grade
HD	Heavy Duty
HP	Horse Power
ID	Identification or Inside Diameter
L	Length
LH	Left Hand (orientated with operator on seat)
LP	Low Profile
mm (Dimension)	millimeters
MS (Fastener)	Machine Screw
NS (as part number)	Item is not sold by Walker Manufacturing
OD	Outside Diameter
oz.	ounce
PFH (Fastener)	Phillips Flat Head
P/N	Part Number
PPH (Fastener)	Phillips Pan Head
PTH (Fastener)	Phillips Truss Head
PTO	Power Take-Off
QKS	Quick Slide
qt.	quart
RH	Right Hand (orientated with operator on seat)
SAE (Fastener)	Society of Automotive Engineers
SBH (Fastener)	Socket Button Head (Bolt)
SFH (Fastener)	Slotted Flat Head
SHC (Fastener)	Socket Head Cap
SHL (Fastener)	Shoulder (Bolt)
SM (Fastener)	Sheet Metal (Screw)
S/N	Serial Number
SQH (Fastener)	Square Head
SS (Fastener)	Stainless Steel
ST (Fastener)	Self-Tapping (Screw)
V	Volts
VLR	Very Low Restriction

**NOTE:** In some instances, combinations of abbreviations may be used (e.g. PPHMS - Phillips Pan Head Machine Screw).

Model B27ix Beginning S/N 196174  
Use only genuine **Walker**® replacement parts.

# ILLUSTRATED PARTS LIST

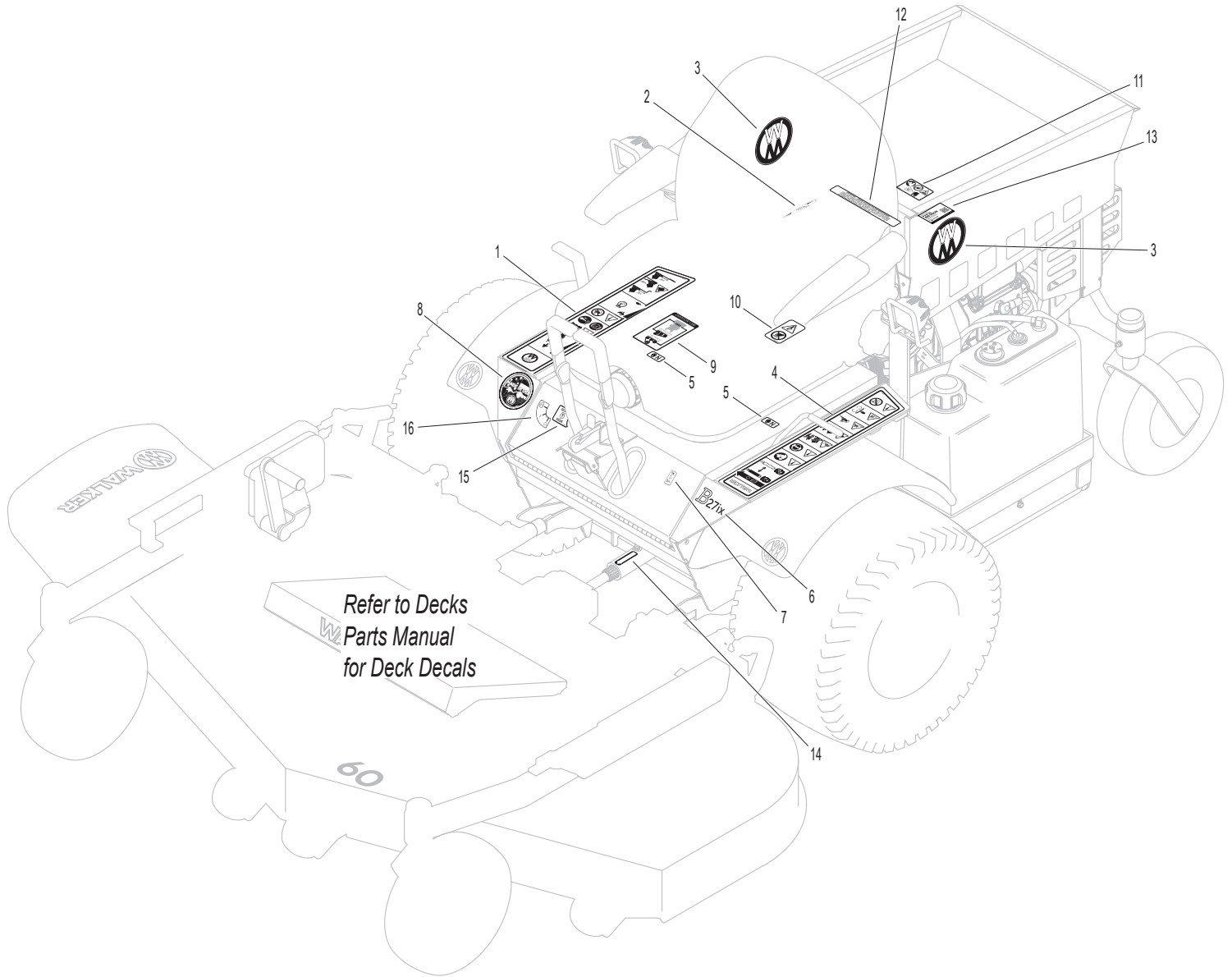
<i>Section of Tractor Covered</i>	<i>Page</i>	<i>Section of Tractor Covered</i>	<i>Page</i>
<hr/>		<hr/>	
<b>Decals</b>		<b>Electrical Components</b>	
Tractor Decals .....	2	Electrical Assembly .....	22
		Light Assembly.....	24
<b>Body / Chassis Assemblies</b>		<b>Maintenance</b>	
Front Body Assembly .....	4	Lubrication Points .....	26
Rear Body Assembly.....	6	Carrier Wheel Fork Installation.....	28
Chassis Assembly.....	8	Wiring Schematic.....	29
		Maintenance And Service Record Sheet.....	30
<b>Tractor Components</b>		<b>Warranty</b>	
Main Component Power Transmission .....	10	Limited Warranty .....	33
Engine Group.....	12		
Engine Group (Fuel Components) .....	14		
Hydrostatic Ground Drive Assemblies.....	16		
Steering Control Assemblies .....	18		
Parking Brake Assembly .....	20		

# TRACTOR DECALS

ITEM NO.	PART NO.	DESCRIPTION	LOCATION	NO. REQ'D SD
<b>Walker Product and Operation Decals</b>				
1	8600-48	RH Fender	Chassis, RH Side Near Seat	1
2	2010-53	Fuel Transfer	Transfer Mount, RH	1
3	5800-9	Decal, Round (4-3/4")	Utility Bed (one on each side)	2
4	8600-77	LH Fender	Chassis, LH Side Near Seat	1
5	9804-1	Axle Lockout	Chassis	2
6	8821-36	Decal, B27ix	Chassis, Front	1
7	5877	Decal, Lights	Front Body	1
8	5856-1	Made In USA	Chassis, Front	1
<b>Danger Decals Warning Decals Caution Decals</b>				
9	4107-13	Decal, Belt Routing	Front Body, Underside	1
10	8600-2	Decal, Rotating Components	Battery / Air Cleaner Mount	1
11	8600-12	Danger, Engine Exhaust	Utility Bed, Underside	1
<b>Maintenance Decals</b>				
12	5855	Important, Engine Cooling	Body Support	1
13	6895-103	Rehiko/Kohler 300 Hour Oil	Oil Cooler Mount	1
14	6875	PTO Alignment Arrow	Universal Joint Tube Assembly	1
15	5802-4	Engine Service Light	Front Body	1
16	8600-54	Decal, Ignition Switch	Front Body	1

**NOTE:** All parts requiring decals are shipped with decals applied.

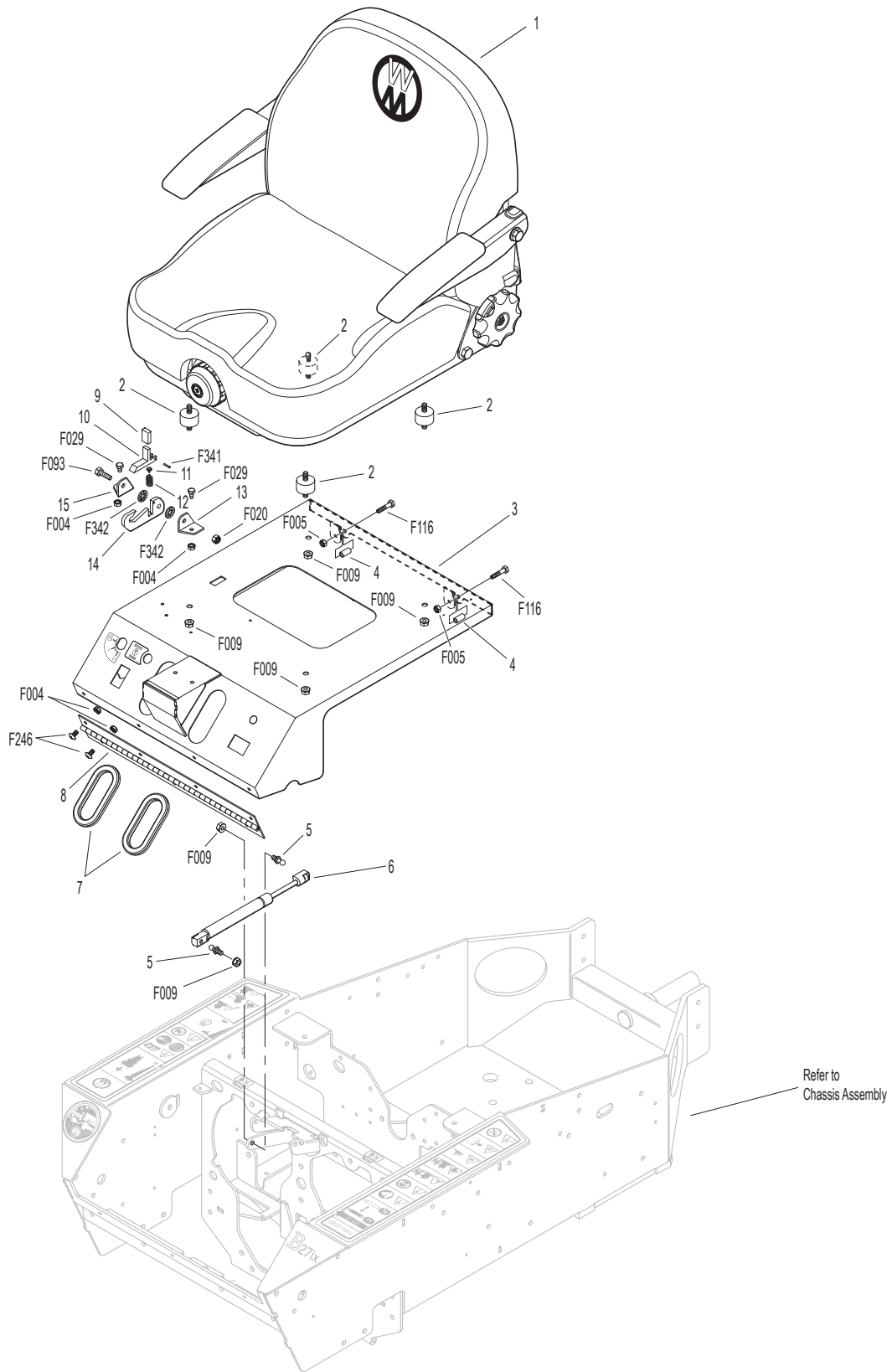
# TRACTOR DECALS



# FRONT BODY ASSEMBLY

ITEM NO.	PART NO.	DESCRIPTION	NO. REQ'D	ITEM NO.	PART NO.	DESCRIPTION	NO. REQ'D
<b>Seat Assembly</b>				<b>Fasteners</b>			
1	6103-56	Suspension Seat	1	F004		1/4-20 Keps Nut	9
2	7440-5	Shock Mount (1-1/4 x 3/4)	4	F005		1/4-20 ESNA Nut	2
<b>Body Assembly</b>				F009		5/16-18 Whiz Locknut	6
3	4100-9	Front Body	1	F020		5/16-18 ESNA Nut	1
4	4100-7	Spacer (1/4 x 3/8 x 3/4)	2	F029		1/4-20 x 1/2 Hex Bolt	2
5	5146	10mm Ball Stud	2	F093		5/16-18 x 1 Hex Bolt	1
6	4145-2	Gas Spring Assembly (Includes Item # 6)	1	F116		1/4-20 x 1-1/4 Hex Bolt	2
7	5180	Edge Molding / Lever Opening	2	F246		1/4-20 x 1/2 PTHMS	7
8	4504-2	Hinge (17")	1	F341		Coil Roll Pin (7/64 x 9/16)	1
<b>Tilt-Up Latch Assembly*</b>				F342		5/16 Conical Washer	2
9	5847	Plastic Tip	1	* Complete Tilt-Up Latch Assembly Kit available by ordering kit # 5744-5.			
10	5744-20	Spring Arm, Tilt-Up Latch	1				
11	5744-10	Spring Pivot Bushing	1				
12	5744-15	Compression Spring (3/8 x 5/8)	1				
13	5744-13	Mount Angle, LH	1				
14	5744-12	Hook, Tilt-Up Latch	1				
15	5744-14	Mount Angle, RH	1				

# FRONT BODY ASSEMBLY



# REAR BODY ASSEMBLY

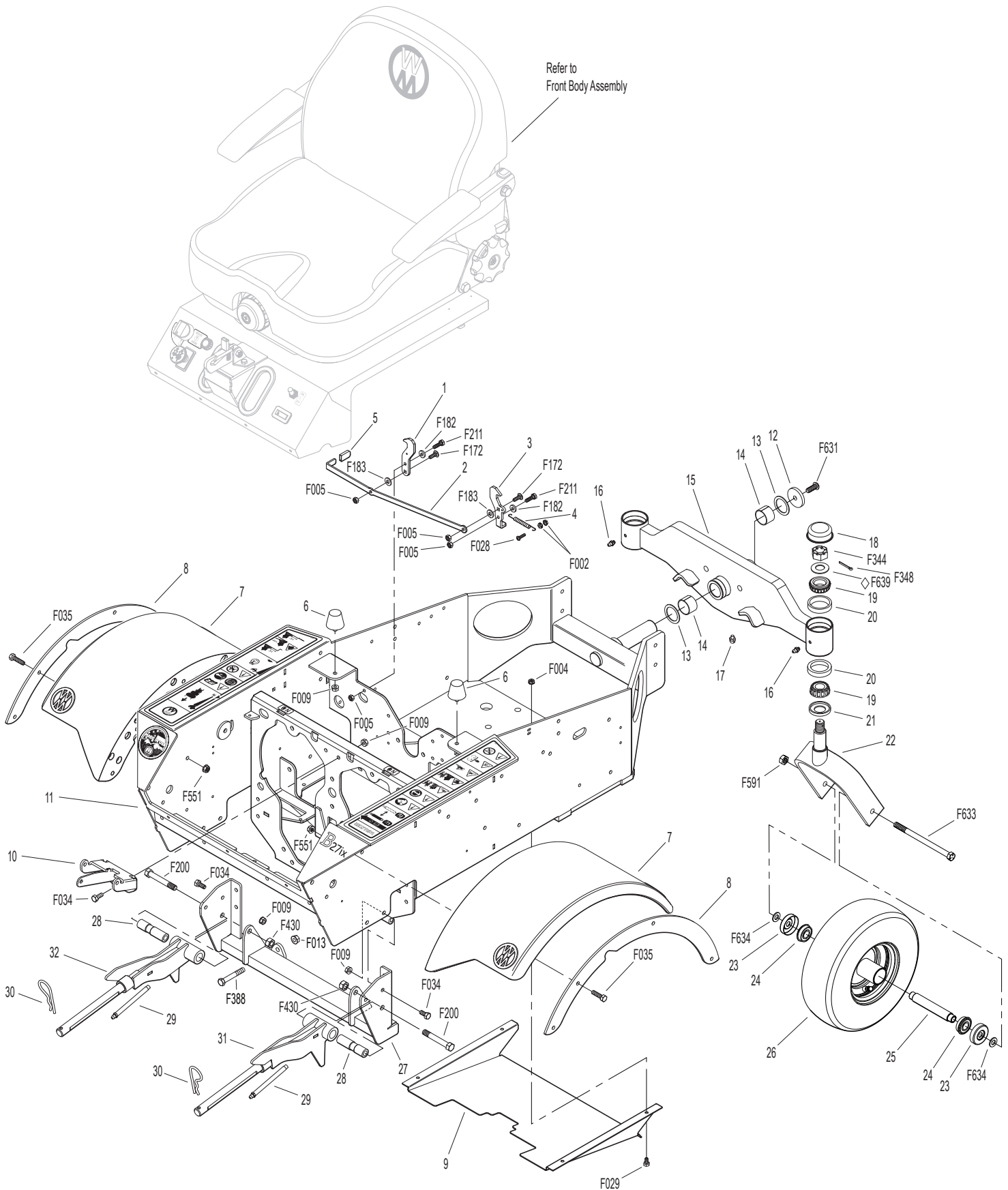
ITEM NO.	PART NO.	DESCRIPTION	NO. REQ'D	ITEM NO.	PART NO.	DESCRIPTION	NO. REQ'D
<b>Utility Bed</b>				<b>Fasteners</b>			
1	8650-13	Bed Liner (19-1/4 x 22)	1	F004		1/4-20 Keps Nut	8
2	4650-2	Utility Bed (Includes Items # 1 & 3)	1	F009		5/16-18 Whiz Locknut	12
3	M112	Edge Molding (17-5/8")	1	F029		1/4-20 x 1/2 Hex Bolt	6
<b>Rear Body Assembly</b>				F031		1/4-20 x 5/8 Hex Bolt	2
4	4013-19	Muffler Guard	1	F034		5/16-18 x 3/4 Hex Bolt	8
5	4013-9	Body Pivot Plate	2	F093		5/16-18 x 1 Hex Bolt	1
6	4104-11	Rear Body Support	1	F132		1/4-20 x 2-3/4 Hex Bolt	2
7	5145-4	Gas Spring Assembly	1	F504		1/4-20 Whiz Locknut	2
8	5146	10mm Ball Stud	2	F551		5/16-18 Flange Top Lock Nut	4
9	4013-7	Muffler Guard, LH	1	F569		1/4-20 Flange Top Lock Nut	2
10	4013-8	Muffler Guard, RH	1	F582		Washer 5/16 x 7/8 x .125	4
11	4104-15	Rear Body Cross Brace	1	F643		1/4-20 x 3/4 Carriage Bolt Flat Head	2
12	4100-11	Body Support Brace	1	F645		5/16-18 x 1-1/8 Hex Bolt	2
13	4104-17	Body Support	1				
14	2010-52	Fuel Tank Selector / Filter Bracket	1				
15	7844	Rubber Bumper (1.25 x .250)	2				



# CHASSIS ASSEMBLY

ITEM NO.	PART NO.	DESCRIPTION	NO. REQ'D	ITEM NO.	PART NO.	DESCRIPTION	NO. REQ'D
<b>Body Latch Assembly</b>				<b>Deck Support Arm &amp; Hitch Assemblies</b>			
1	7383-12	Body Latch Hook, RH	1	27	4301-15	Deck Arm Support Mount	1
2	7383-9	Body Latch Trigger	1	28	6840-4	Deck Arm Bushing (3")	2
3	7383-15	Body Latch Hook, LH W/Spring Hole	1	29	5830-1	5/16-24 4" Grease Fitting	2
4	7222	Extension Spring (1/4 x 3)	1	30	5775-2	Hitch Pin (#6)	2
5	5854	Plastic Tip	1	31	4431-3	Deck Support Arm, LH (Includes Item # 29)	1
<b>Chassis Assembly</b>				32	4430-3	Deck Support Arm, RH (Includes Item # 29)	1
6	5845	Rubber Bumper (1.50 x 1.25)	2	<b>Fasteners</b>			
7	4305-3	Fender	2	F002	10-24 Keps Nut		2
8	4305-6	Fender Doubler	2	F004	1/4-20 Keps Nut		4
9	4301-13	Debris Shield (Includes Items # F004 & F029)	1	F005	1/4-20 ESNA Nut		4
10	4215-10	Shock Mount / Body Lift Arm	1	F009	5/16-18 Whiz Locknut		8
11	4305-7	Chassis Frame	1	F013	3/8-16 Whiz Locknut		2
<b>Spread Tail Wheel Assembly</b>				F028	10-24 x 3/4 PPHMS		1
12	4401-4	Washer (1-3/4 x 3/8 x 1/4 Thk)	1	F029	1/4-20 x 1/2 Hex Bolt		4
13	4301-2	Fiberglide Thrust Washer	2	F034	5/16-18 x 3/4 Hex Bolt		6
14	4301-3	Fiberglide Bearing	2	F035	5/16-18 x 1-1/4 Hex Bolt		8
15	4301-14	Tail Wheel Pivot Axle (Includes Items # 14, 16 & 17)	1	F172	1/4-20 x 3/4 Carriage Bolt		2
16	5830	Grease Fitting	2	F182	1/4 x 5/8 x 1/8 Washer		2
17	5830-4	Grease Fitting (90 Deg.)	1	F183	.312 x .700 x .074 Washer		2
18	8769-8	Dust Cap, Deck Caster	2	F200	7/16-20 x 3 Grade 8 Bolt		2
19	8769-6	Bearing Cone (1" ID)	4	F211	1/4-20 x 7/8 Hex Bolt		2
20	8769-5	Bearing Cup (2 x 1-5/8)	4	F344	3/4-16 Slotted Hex Nut		2
21	8769-7	Seal	2	F348	1/8 x 1-1/2 Cotter Pin		2
22	8765-14	Caster Wheel Fork	2	F388	3/8-16 x 2-1/2 Hex Bolt		2
23	8769-13	Bearing Cup (7/16 ID)	4	F430	7/16-20 ESNA Nut		2
24	5037-1	Bearing, Tail Wheel	4	F551	5/16-18 Flange Top Lock Nut		8
25	5038-3	Axle Spacer Tube (4.995) (.4375 ID)	2	F591	7/16-14 Flange Top Lock Nut		2
26	8768-13	Caster Wheel (11 x 4-5 PR, BB) Black (Includes Items # 23-25 & F634)	2	F631	3/8-16 x 1 Button Head Cap Screw		1
	8768-8	Tire, Pneumatic (11 x 4-5 6-Ply)	*	F633	7/16-14 x 6-1/2 Hex Bolt		2
				F634	Washer .835 x .438 x .080		4
				F639	Belleville Washer (1.5 x .755 x .072)		2
				* Service Part Only			

# CHASSIS ASSEMBLY



◇ Refer to CASTER WHEEL FORK INSTALLATION, Page 28.

Model B27ix Beginning S/N 196174  
Use only genuine **Walker**® replacement parts.

# MAIN COMPONENT POWER TRANSMISSION

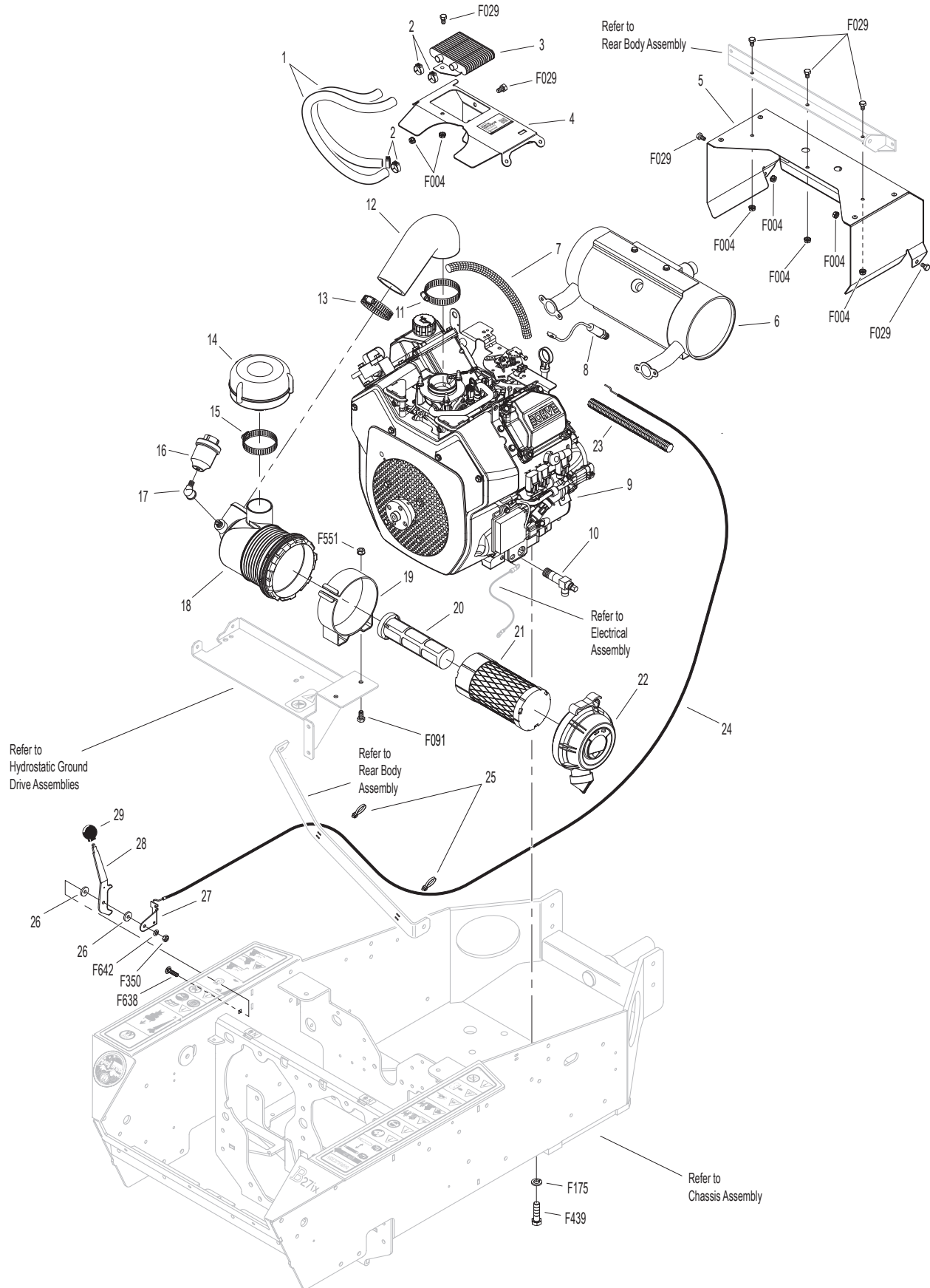
ITEM NO.	PART NO.	DESCRIPTION	NO. REQ'D	ITEM NO.	PART NO.	DESCRIPTION	NO. REQ'D
<b>PTO Drive Assembly</b>				<b>Fasteners</b>			
1	4230-3	PTO Drive Belt	1	F009	5/16-18 Whiz Locknut		10
2	5247-2	V-Groove Idler (4")	2	F013	3/8-16 Whiz Locknut		5
3	6325-2	Spacer Bushing (5/16)	1	F032	1/4-20 x 3/4 Hex Bolt		2
4	7201-3	Fiberglide Bearing	2	F034	5/16-18 x 3/4 Hex Bolt		6
5	7201-7	Inner Race (2-5/8)	1	F035	5/16-18 x 1-1/4 Hex Bolt		2
6	4325-16	Idler Mount, RH	1	F040	3/8-16 x 1-1/2 Hex Bolt		1
7	4325-17	Idler Pivot	1	F041	3/8-16 x 1-3/4 Hex Bolt		1
8	5146	10mm Ball Stud	2	F046	3/8-16 x 3-1/2 Hex Bolt		1
9	2215-6	Pressure Dampener	1	F051	3/8 SAE Washer		2
10	4410-18	Dampener Mount	1	F093	5/16-18 x 1 Hex Bolt		2
11	4325-15	Idler Mount, LH	1	F153	3/16 x 3/16 x 1-1/4 Key		1
12	4411-6	Drive Shaft Collar	1	F449	Washer 1/2 x 1-5/8 x 1/4		1
13	5830-3	Grease Fitting (45 Deg.)	1	F451	1/2-20 Nylon Locknut		1
14	4411-9	Drive Shaft	1	F472	1-14 LH Hex Nut		1
15	4410-17	Clutch Stop	1	F551	5/16-18 Flange Top Lock Nut		1
16	4410-15	Clutch	1	F569	1/4-20 Flange Top Lock Nut		2
17	4410-9	Washer 1 x 1-5/8 x 1/4	1	F647	5/16-18 x 2.0625 Hex Bolt GR 8		1
18	5830	Grease Fitting	1				
19	7275-16	Universal Joint Tube Assembly / Spline	1				
20	4274-12	PTO Drive Shaft Assembly / Spline	1				
21	4236-5	PTO Drive Pulley	1				



# ENGINE GROUP

ITEM NO.	PART NO.	DESCRIPTION	NO. REQ'D	ITEM NO.	PART NO.	DESCRIPTION	NO. REQ'D
<b>Remote Oil Cooler Assembly</b>				<b>Throttle Assembly</b>			
1	NS	Oil Cooler Hose	2**	23	8123-3	Insultherm (3/8 x 10")	1
2	NS	Clamp	4**	24	5108-24	Throttle Cable (56")	1
3	NS	Oil Cooler	1**	25	5975-3	Cable Tie (50# x 7")	2
4	8016-15	Oil Cooler Mount	1	26	5108-10	Friction Washer (.125)	2
<b>Engine Assembly</b>				27	5108-21	Control Bracket	1
5	4013-18	Muffler Heat Shield	1	28	5108-20	Control Lever, Throttle	1
6	NS	Muffler	1	29	5108-5	Throttle Control Knob, Red	1
7	M265	Insultherm (3/8 x 9") (Pulse Pump Vacuum Line)	1	<b>Fasteners</b>			
8	NS	Sensor, Oxygen (Rehiko/Kohler)	1	F004		1/4-20 Keps Nut	7
9	NS	27 HP Engine, EFI (Rehiko/Kohler)	1	F029		1/4-20 x 1/2 Hex Bolt	7
10	4010-1	Drain Valve 3/8-18 NPTF	1	F091		5/16-18 x 5/8 Hex Bolt	2
<b>Precleaner Assembly</b>				F175		1/2 Split Lock Washer	4
11	6029	Hose Clamp (1-13/16 to 2-3/4)	1	F350		1/4-20 LP Nylock	1
12	2012-2	Air Intake Hose	1	F439		1/2-13 x 1-3/4 Hex Bolt	4
13	7840-5	Hose Clamp (1.56 to 2.50)	1	F551		5/16-18 Flange Top Lock Nut	2
14	7026-4	Remote Precleaner	1	F638		1/4-20 x 1 Carriage Bolt	1
15	7840	Hose Clamp (1-5/16 to 2-1/4)	1	F642		1/4 x .042 Belleville Washer	1
16	5091-18	Air Flow Indicator (Vacuum 15" H2O)	1	* Service Part Only			
17	5091-16	Street Elbow 90' (1/8 x 1/8)	1				
18	2090-21	Air Cleaner Assembly (Includes Items # 20-22)	1	** Use the engine model and spec number from Rehiko/Kohler to order this item.			
19	5088-3	Air Cleaner Band	1				
20	2090-3	Safety Filter Insert	1				
21	2090-1	Air Cleaner Cartridge	1				
22	2088-2	Air Cleaner Cap	*				

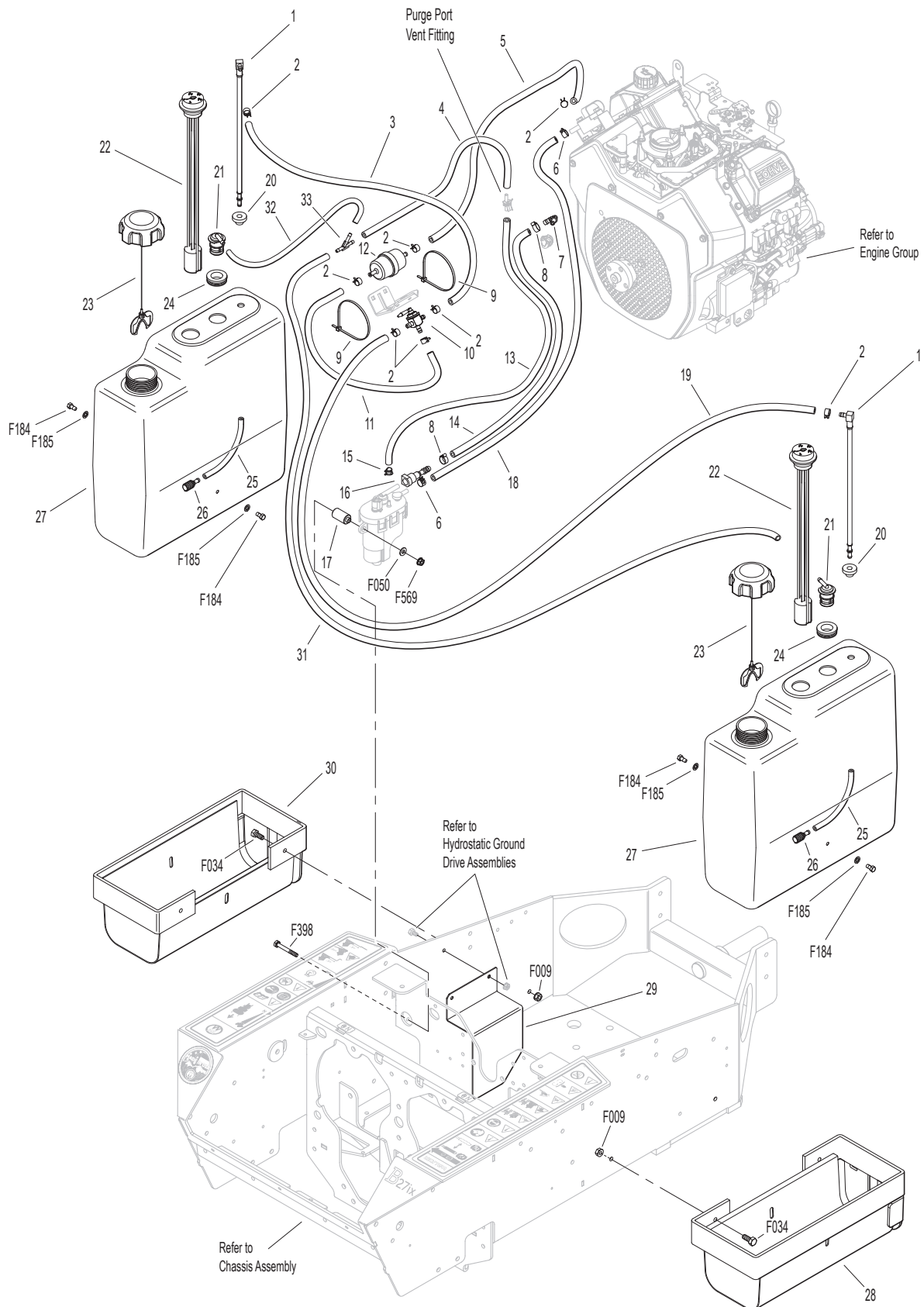
# ENGINE GROUP



Model B27ix Beginning S/N 196174  
 Use only genuine **Walker**® replacement parts.



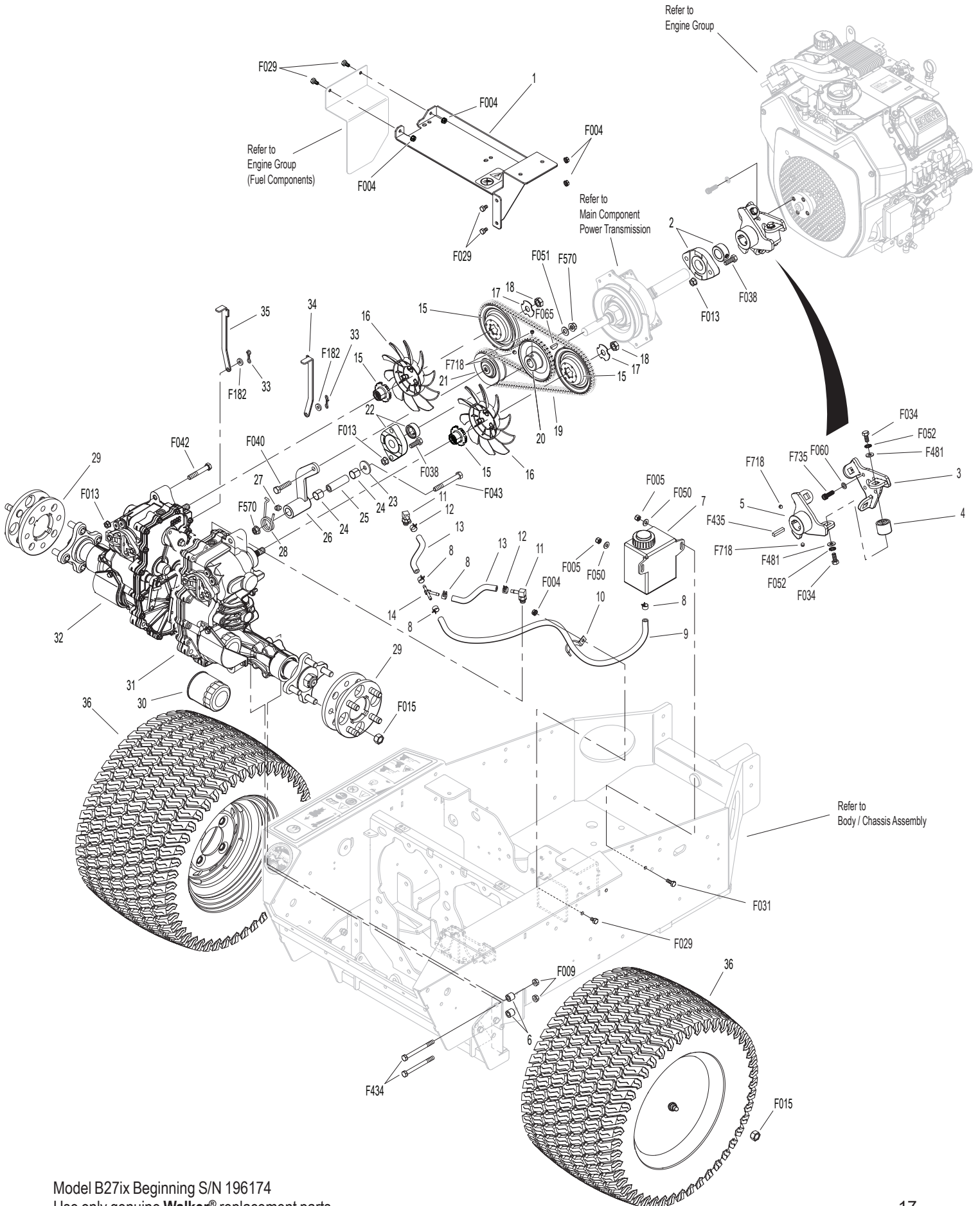
# ENGINE GROUP (FUEL COMPONENTS)



# HYDROSTATIC GROUND DRIVE ASSEMBLIES

ITEM NO.	PART NO.	DESCRIPTION	NO. REQ'D	ITEM NO.	PART NO.	DESCRIPTION	NO. REQ'D
<b>Ground Drive Assemblies</b>				<b>Fasteners</b>			
1	4910-12	Battery / Air Cleaner Mount	1	F004		1/4-20 Keps Nut	5
2	4349-12	Flanged Bearing (1")	1	F005		1/4-20 ESNA Nut	2
3	2352-2	Coupler (4 Bolt)	1	F009		5/16-18 Whiz Locknut	4
4	2351-1	Rubber Iso Coupler	3	F013		3/8-16 Whiz Locknut	6
5	2351-50	Flex Coupler Half (Includes Items # F435 & F718)	1	F015		1/2-20 Wheel Lug Nut	16
6	9430-1	Spacer Tube	4	F029		1/4-20 x 1/2 Hex Bolt	5
7	4023	Oil Expansion Reservoir	1	F031		1/4-20 x 5/8 Hex Bolt	2
8	5879-3	Hose Clamp (1/2)	4	F034		5/16-18 x 3/4 Hex Bolt	6
9	M111	Hose (1/4 x 29")	1*	F038		3/8-16 x 1 Hex Bolt	4
10	5835-6	Clamp Half (5/8) .280 Hole	1	F040		3/8-16 x 1-1/2 Hex Bolt	1
11	2025-17	Straight Thread Hose Fitting	2	F042		3/8-16 x 2-1/4 Hex Bolt	2
12	5879-2	Hose Clamp (7/16 Silver)	2	F043		3/8-16 x 3 Hex Bolt	1
13	M111	Hose (1/4 x 3-1/4)	2*	F050		1/4 SAE Washer	2
14	8043-11	1/4 Barb Fitting "Y" Connector	1	F051		3/8 SAE Washer	1
15	4026-18	Fan & Pulley Kit (Includes Items # 16-18)	2	F052		5/16 Ext. Star Lock Washer	6
16	4026-13	Hydro Pulley Fan	2	F060		AN960516 Washer	4
17	5025-18	Hydro Fan Washer	2	F065		3/16 x 3/4 Woodruff Key (#606)	1
18	5025-19	Hydro Fan Nut	2	F182		1/4 x 5/8 x 1/8 Washer	2
19	4230-2	Ground Drive Belt	1	F434		5/16-18 x 3-1/2 Hex Bolt	4
20	4240-1	Drive Pulley (Includes Items # F065 & F718)	1	F435		1/4 x 1/4 x 1-1/4 Key	1
21	4245	Idler Pulley (3/A)	1	F481		Washer 5/16 x 1 x .125	6
22	6349-2	Flanged Bearing (3/4")	1	F570		3/8-16 Flange Top Lock Nut	2
23	5841	Retainer Washer (3/8 x 1-1/4)	1	F718		5/16-18 x 5/16 Set Screw (Knurl Point)	4
24	7201-3	Fiberglide Bearing	2	F735		5/16-18 x 7/8 SHC Screw	4
25	7201-5	Inner Race (2-1/4)	1	* <b>Required hose specifications:</b> M111 - 1/4" ID fuel/oil/vapor hose (Gates 4219-0103 or equivalent)			
26	4325-13	Idler Arm (Includes Items # 24 & 27)	1				
27	5830-3	Grease Fitting (45 Deg.)	1				
28	7364-2	Torsion Spring	1				
29	4305-56	Wheel Spacer Weldment	2				
30	2026-17	Hydro-Gear® Oil Filter	2				
31	4025-35	Hydro-Gear ZT-3100, LH	1				
32	4026-35	Hydro-Gear ZT-3100, RH	1				
33	4407-4	Bow Tie Cotter Pin	2				
34	2028-5	Lockout Arm, LH	1				
35	2028-6	Lockout Arm, RH	1				
<b>Wheel Assembly</b>							
36	5076-7	Wheel & Tire (20 x 12.00-10), Black	2				

# HYDROSTATIC GROUND DRIVE ASSEMBLIES

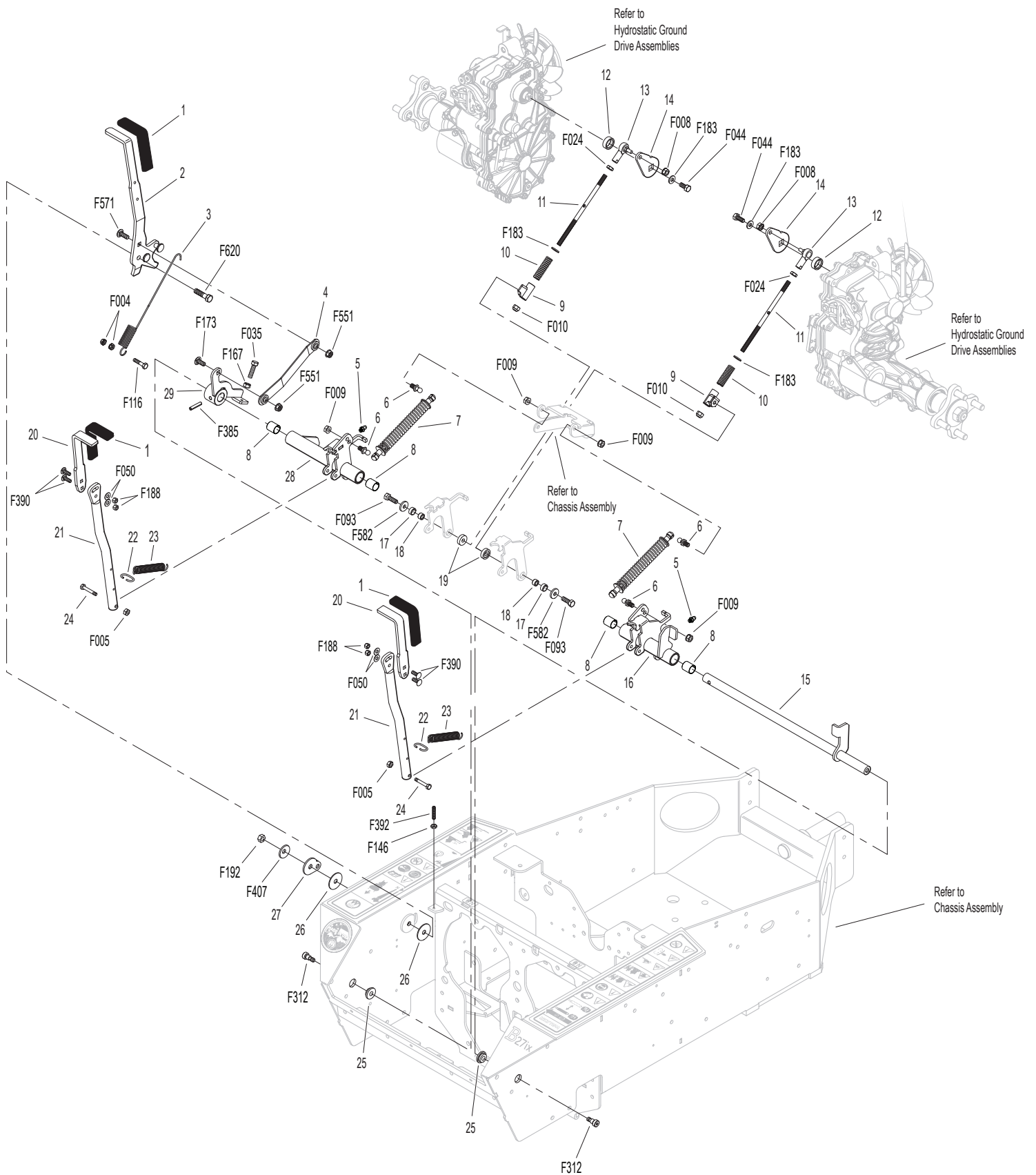


Model B27ix Beginning S/N 196174  
 Use only genuine **Walker®** replacement parts.

# STEERING CONTROL ASSEMBLIES

ITEM NO.	PART NO.	DESCRIPTION	NO. REQ'D	ITEM NO.	PART NO.	DESCRIPTION	NO. REQ'D
<b>Steering Lever &amp; FSC Assemblies</b>				<b>Fasteners</b>			
1	5850-2	Handle Grip, Foam (5-1/2)	3	F004	1/4-20 Keps Nut		2
2	4170-2	FSC Lever	1	F005	1/4-20 ESNA Nut		2
3	4219-1	Extension Spring	1	F008	5/16-24 Keps Nut		2
4	4170-3	FSC Linkage	1	F009	5/16-18 Whiz Locknut		4
5	5830	Grease Fitting	2	F010	5/16-24 ESNA Nut		2
6	5146	10mm Ball Stud	4	F024	5/16-24 Jam Nut		2
7	4199-4	Steering Lever Dampener Assembly	2	F035	5/16-18 x 1-1/4 Hex Bolt		1
8	8201-3	Fiberglide Bearing	4	F044	5/16-24 x 3/4 Hex Bolt		2
9	5463-7	Steering Lever Actuator	2	F050	1/4 SAE Washer		4
10	5665-1	Compression Spring (2-1/2)	2	F093	5/16-18 x 1 Hex Bolt		2
11	2213	Control Rod (7")	2	F116	1/4-20 x 1-1/4 Hex Bolt		1
12	2212-3	Seal Retainer	2	F146	1/4-20 Jam Nut		1
13	5214-2	Ball Joint (5/16-24) (Nylon Lined)	2	F167	5/16-18 Hex Nut		1
14	6212-4	Transmission Control Arm	2	F173	5/16-18 x 3/4 Carriage Bolt		1
15	4451-16	Steering Pivot Shaft W/Stop	1	F183	.312 x .700 x .074 Washer		4
16	6451-1	Speed Control Actuator, LH (Includes Items # 5 & 8)	1	F188	1/4-20 Self-Locking Nut		4
17	7201-2	Fiberglide Bearing (1/2")	2	F192	3/8-24 Self-Locking Nut		1
18	5463-5	Steering Arm Pivot Bushing (SS)	2	F312	3/8 x 3/8 Shoulder Bolt		2
19	5463-6	Washer 5/16 x 3/4 x .250	2	F385	1/4 x 1-1/4 Roll Pin		1
20	5453-20	Steering Lever Handle (+1") Adjustable / SS (Includes Items # 1, F050, F188 & F390)	2	F390	1/4-20 x 7/8 Carriage Bolt		4
21	4452-1	Steering Lever Tube W/Tab	2	F392	1/4-20 x 1 Set Screw, SS		1
22	5450	D-Clip	2	F407	Belleville Washer 3/8 x 1.187, SS		1
23	5222	Extension Spring (1/2 x 3-1/4)	2	F551	5/16-18 Flange Top Lock Nut		2
24	4452-6	Steering Pivot (1/4-20 x 1-5/8)	2	F571	5/16-18 x 7/8 Carriage Bolt		1
25	9704-3	Pivot Rod Bushing / Plastic	2	F582	Washer 5/16 x 7/8 x .125		2
26	5141	FSC Friction Washer (1-1/2 x 3/8 x 1/16)	2	F620	3/8-24 x 1-1/2 Hex Bolt		1
27	4142-1	FSC Cam	1				
28	6451-4	Speed Control Actuator, RH (Includes Items # 5 & 8)	1				
29	4451-17	FSC Friction Actuator	1				

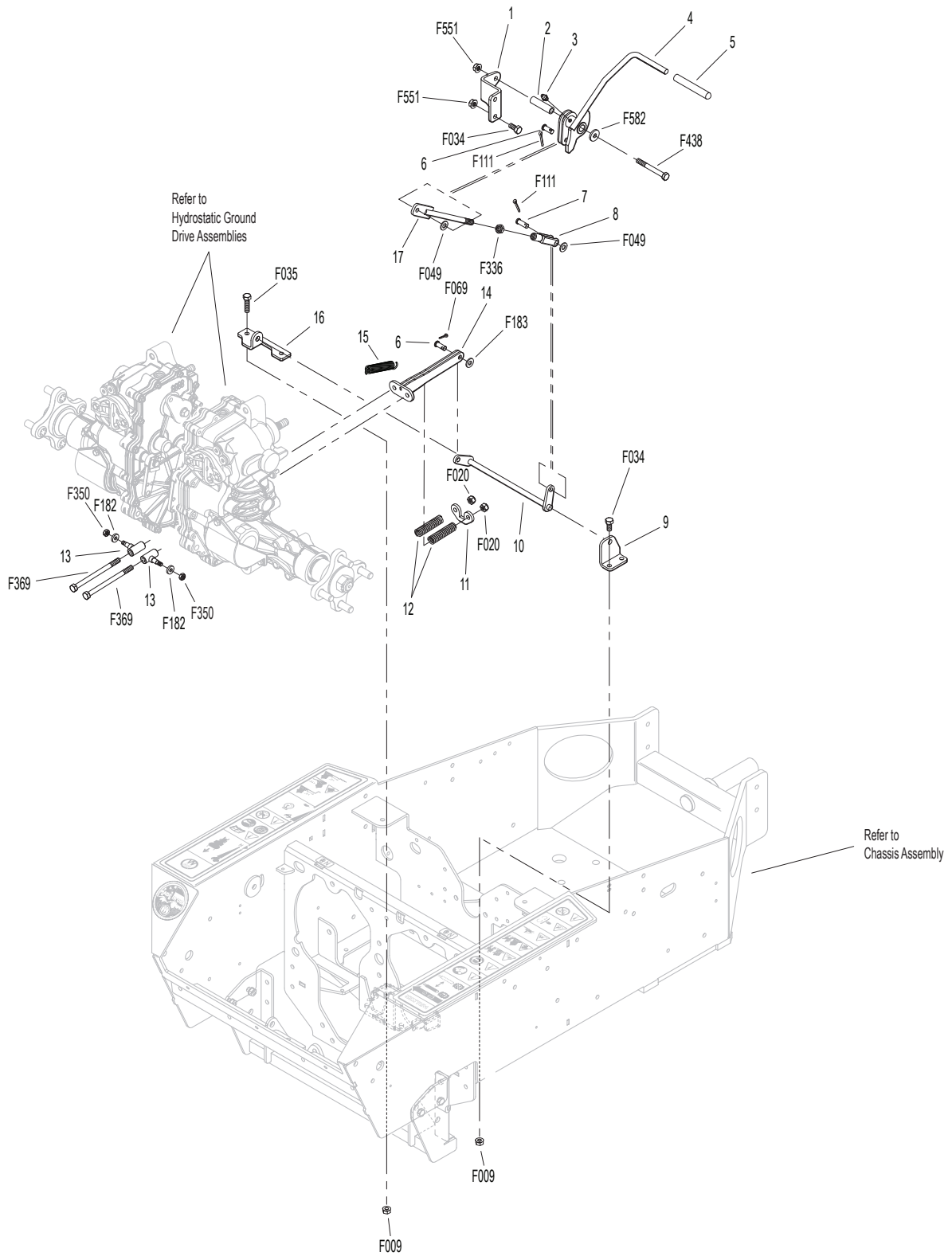
# STEERING CONTROL ASSEMBLIES



# PARKING BRAKE ASSEMBLY

ITEM NO.	PART NO.	DESCRIPTION	NO. REQ'D	ITEM NO.	PART NO.	DESCRIPTION	NO. REQ'D
<b>Parking Brake Assembly</b>				<b>Fasteners</b>			
1	4401-5	Brake Pivot Bracket	1	F009		5/16-18 Whiz Locknut	4
2	7201-11	Inner Race (1.938)	1	F020		5/16-18 ESNA Nut	2
3	5830	Grease Fitting	1	F034		5/16-18 x 3/4 Hex Bolt	5
4	4406-52	Parking Brake Lever (Includes Item # 5)	1	F035		5/16-18 x 1-1/4 Hex Bolt	2
5	7406-1	Handle Grip, Red	1	F049		5/16 SAE Washer	2
6	8655-4	Clevis Pin (5/16 x 3/4)	2	F069		3/32 x 1/2 Cotter Pin	1
7	5281-2	Clevis Pin (5/16 x 7/8)	1	F111		1/8 x 3/4 Cotter Pin	2
8	2280	Clevis (3/8)	1	F182		1/4 x 5/8 x 1/8 Washer	2
9	4401-7	Parking Brake Pivot	1	F183		.312 x .700 x .074 Washer	1
10	4407-6	Parking Brake Actuator	1	F336		3/8-16 Jam Nut	1
11	4407-27	Parking Brake Bolt Stabilizer	1	F350		1/4-20 LP Nylock	2
12	5665-1	Compression Spring (2-1/2)	2	F369		5/16-18 x 4-1/2 Hex Bolt	2
13	5463	Steering Lever Actuator	2	F438		5/16-18 x 2-3/4 Hex Bolt	1
14	4407	Parking Brake Link	1	F551		5/16-18 Flange Top Lock Nut	3
15	5222	Extension Spring (1/2 x 3-1/4)	1	F582		Washer 5/16 x 7/8 x .125	1
16	4401-9	Parking Brake Mount	1				
17	4401	Parking Brake Actuator Push	1				

# PARKING BRAKE ASSEMBLY



# ELECTRICAL ASSEMBLY

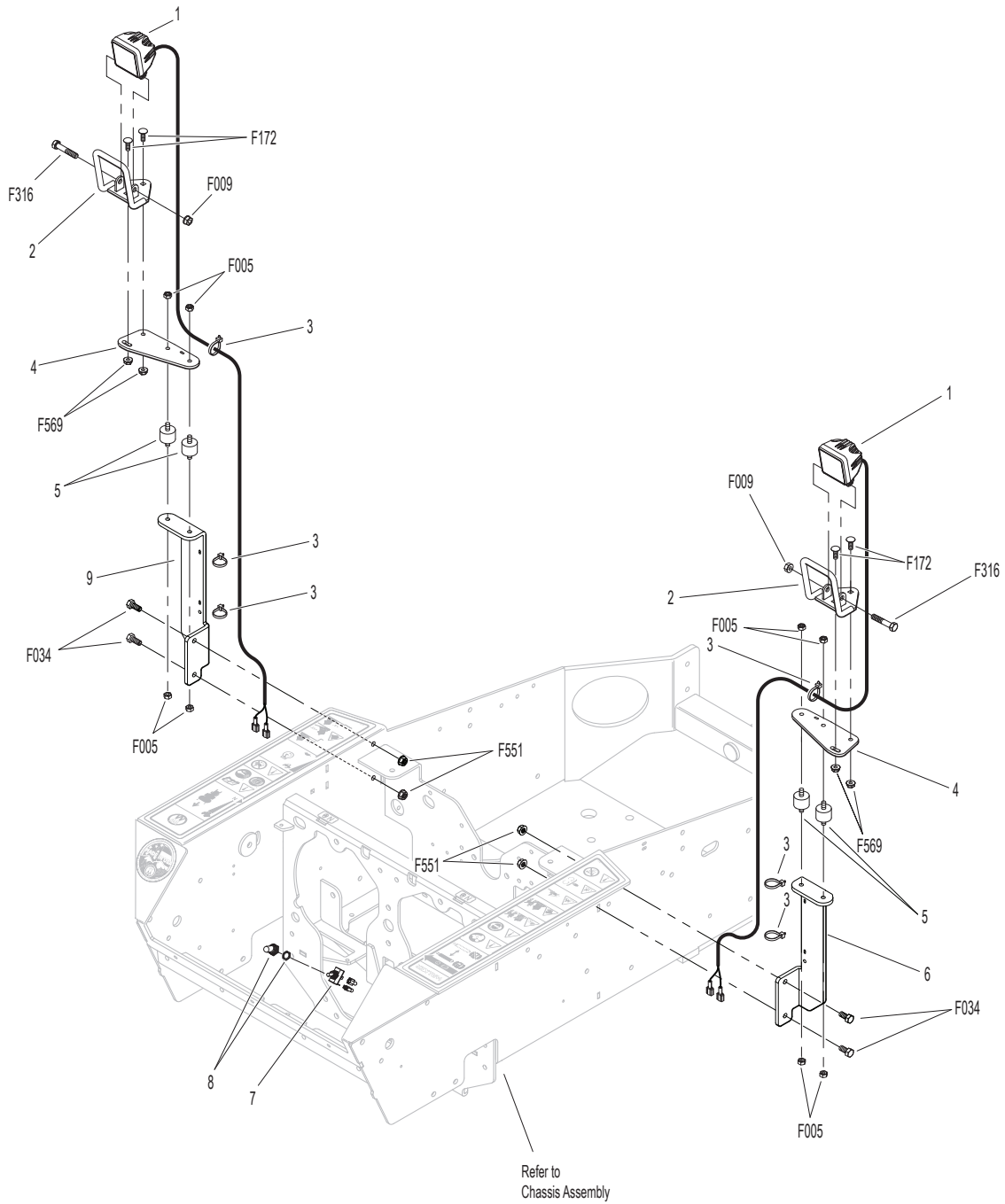
ITEM NO.	PART NO.	DESCRIPTION	NO. REQ'D	ITEM NO.	PART NO.	DESCRIPTION	NO. REQ'D
<b>Electrical Assembly</b>				<b>Fasteners</b>			
1	5832	Cable Clamp (1/2)	3	F002		10-24 Keps Nut	10
2	6104-11	Seat Switch (NO)	1	F004		1/4-20 Keps Nut	3
3	8990-1	Hourmeter (Global)	1	F019		1/4-20 ESNA Wing Nut	2
4	7854	Plastic Tip, Red	2	F025		10-24 x 3/8 PPHMS	3
5	5932	Battery Terminal Insulation Black (-)	1	F026		10-24 x 1/2 PPHMS	6
6	5975-1	Cable Tie (18# x 3-3/4")	2	F028		10-24 x 3/4 PPHMS	1
7	5933	Battery Terminal Insulation Red (+)	1	F031		1/4-20 x 5/8 Hex Bolt	2
8	4940-6	Battery Cable (33")	1	F050		1/4 SAE Washer	2
9	4940-5	Battery Cable (25")	1	F182		1/4 x 5/8 x 1/8 Washer	2
10	8404-8	Plastic Cover, Red	2	F232		10-32 Keps Nut	2
11	4940-11	Jumper Wire	1	F349		Washer .835 ID 1.122 OD, SS	1
12	8941	Circuit Breaker (30 Amp) Auto Reset/Sealed	1	F381		1/4-20 Hex Nut	1
13	7938	Lead Wire (Engine to Chassis Ground)	1	F475		1/4-20 x 1 PFH Screw	1
14	5975-3	Cable Tie (50# x 7")	2	F505		6-32 x 7/8 Hex Trim MS, SS	4
15	4410-16	Soft Start Control	1	F506		6-32 Nylock Nut	4
16	5942-20	Safety Switch (NO)	1				
17	7948-6	Time Delay Module (.5 Second Delay)	1				
18	5942-8	Safety Switch (NO), Delta Side Mount	1				
19	4940-27	Wire Harness	1				
20	8536	Warning Horn	1				
21	5839	Hook Bolt	2				
22	6941-9	Relay Switch 30/40 Amp	3				
23	5844	Battery Hold-Down Bar	1				
24	7910-3	Battery (12V/350A CCA)	1				
25	8960-15	Ignition Switch W/Keys (Includes Items # 4, 26 & F349)	1				
26	8960-3	Key Set W/Umbrella	1				
27	4950	PTO Switch	1				
28	4950-11	PTO Switch Spacer	1				
29	8996-9	Red Indicator Light Assembly	1				



# LIGHT ASSEMBLY

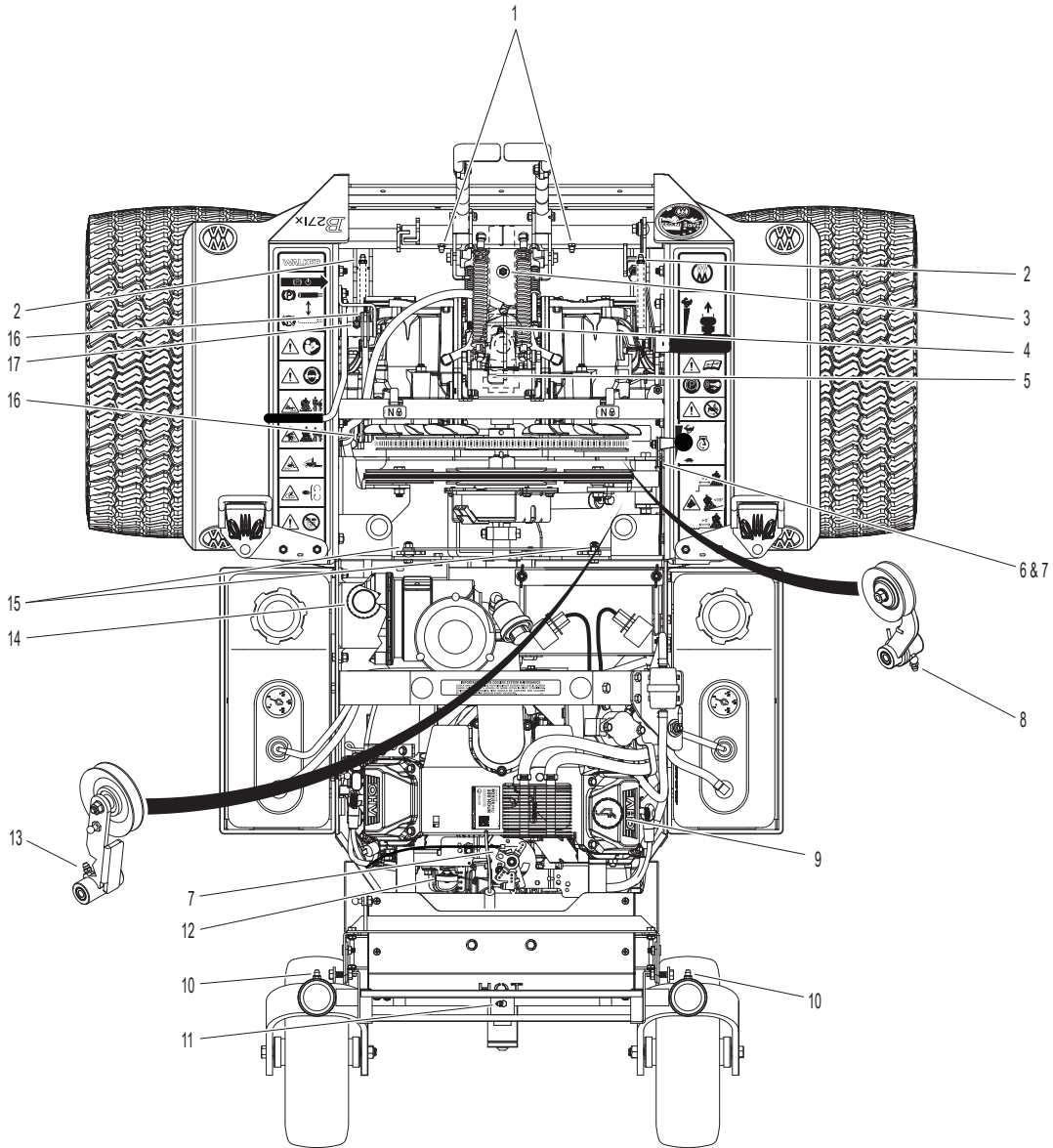
ITEM NO.	PART NO.	DESCRIPTION	NO. REQ'D	ITEM NO.	PART NO.	DESCRIPTION	NO. REQ'D
<b>Light Assembly</b>				<b>Fasteners</b>			
1	7989-15	Light Assembly (LED)	2	F005		1/4-20 ESNA Nut	8
2	7993-10	Headlight Mount Bracket	2	F009		5/16-18 Whiz Locknut	2
3	5975-3	Cable Tie (50# x 7")	6	F034		5/16-18 x 3/4 Hex Bolt	4
4	7992-4	Light Mount	2	F172		1/4-20 x 3/4 Carriage Bolt	4
5	7432	Shock Mount (1.0 OD x .75)	4	F316		5/16-18 x 1-3/4 Hex Bolt	2
6	7993-9	Light Mount Bracket, LH	1	F551		5/16-18 Flange Top Lock Nut	4
7	5995	Toggle Switch (Off-On)	1	F569		1/4-20 Flange Top Lock Nut	4
8	5995-2	Switch Boot	1				
9	7993-8	Light Mount Bracket, RH	1				

# LIGHT ASSEMBLY





# LUBRICATION POINTS



# CASTER WHEEL FORK INSTALLATION

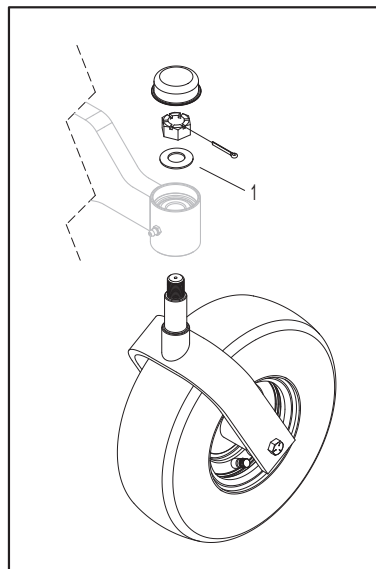
ITEM NO.	DESCRIPTION	ITEM NO.	DESCRIPTION
----------	-------------	----------	-------------

## Caster Wheel Fork Assembly

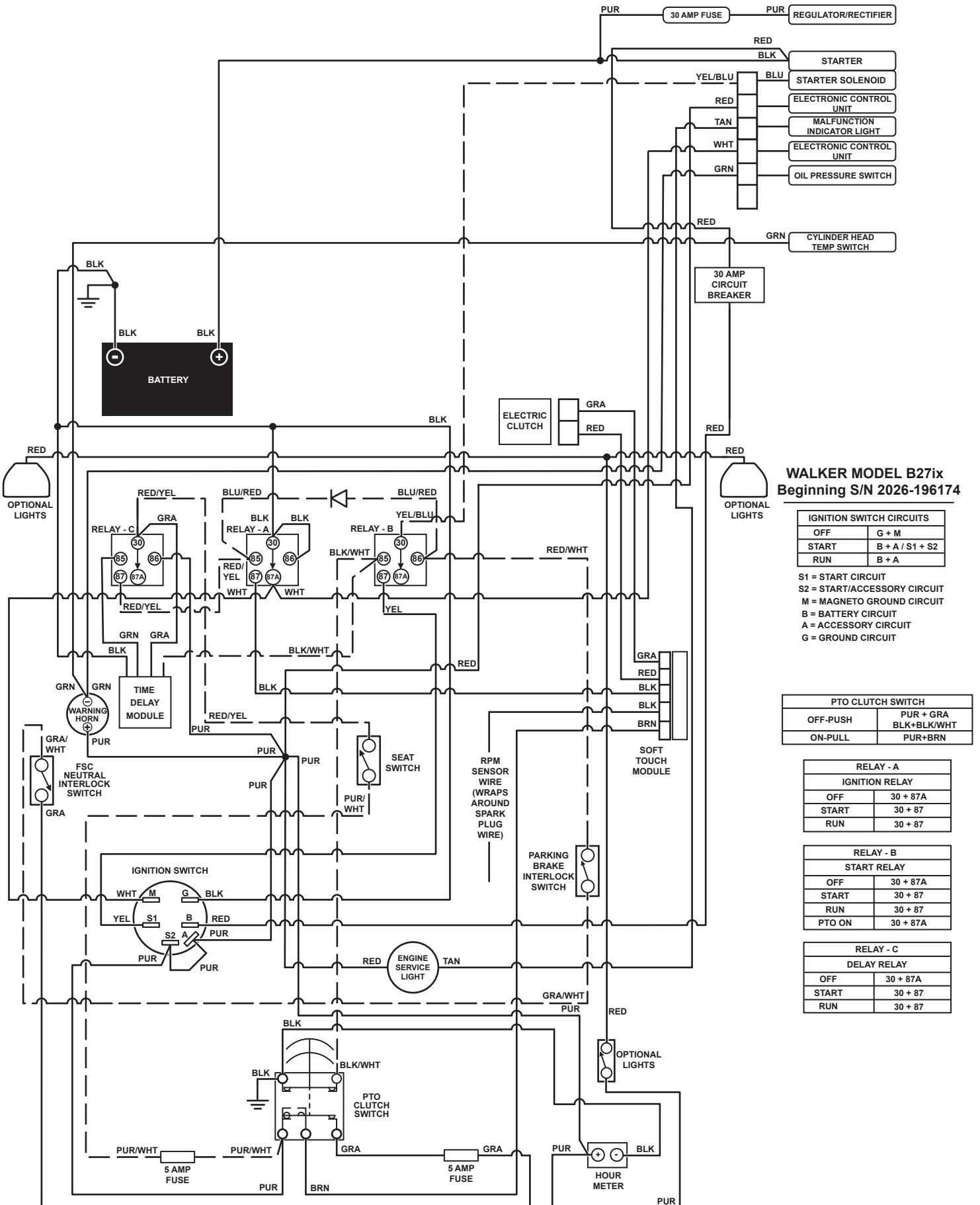
- 1 Installing the Caster Fork with a Belleville Washer:
  - a. Install the fork up into the bearing housing through the lower and upper tapered roller bearings. Rotate the fork as the seal is engaging onto the shaft to prevent the seal lip from rolling.
  - b. Place a Belleville washer onto the fork shaft with the cupped side of the washer down against the bearing, and thread the slotted hex nut finger-tight onto the shaft.
  - c. Using a wrench or socket, tighten the slotted hex nut by hand only until the Belleville washer is fully compressed, which is felt as a distinct increase in the amount of force required to turn the nut.
  - d. Back the nut off one to two notches until the cotter pin hole is visible, and install the cotter pin to lock the nut in place.

**NOTE:** The tension of the compressed Belleville washer provides the correct amount of bearing pre-load and will remain consistent with use. Do not over-tighten the nut, which will bind the caster pivot and cause unnecessary turning friction.

Tail Wheel Pivot Assembly



# WIRING SCHEMATIC



## WALKER MODEL B27ix Beginning S/N 2026-196174

IGNITION SWITCH CIRCUITS	
OFF	G + M
START	B + A / S1 + S2
RUN	B + A

S1 = START CIRCUIT  
 S2 = START/ACCESSORY CIRCUIT  
 M = MAGNETO GROUND CIRCUIT  
 B = BATTERY CIRCUIT  
 A = ACCESSORY CIRCUIT  
 G = GROUND CIRCUIT

PTO CLUTCH SWITCH	
OFF-PUSH	PUR + GRA BLK+BLK/WHT
ON-PULL	PUR+BRN

RELAY - A IGNITION RELAY	
OFF	30 + 87A
START	30 + 87
RUN	30 + 87

RELAY - B START RELAY	
OFF	30 + 87A
START	30 + 87
RUN	30 + 87
PTO ON	30 + 87A

RELAY - C DELAY RELAY	
OFF	30 + 87A
START	30 + 87
RUN	30 + 87

Model B27ix Beginning S/N 196174  
 Use only genuine **Walker**® replacement parts.







# LIMITED WARRANTY FOR WALKER MODEL B27ix RIDER MOWERS

## 1. WHAT THIS WARRANTY COVERS, AND FOR HOW LONG:

Walker Manufacturing company will, at its option, repair or replace, without charge, any part covered by this warranty which is found to be defective in material and/or workmanship within two (2) years\* after the date of sale to the original retail purchaser unless the product is used for rental purposes, in which case this warranty is limited to ninety (90) days. At Walker's request, customer will make the defective part available for inspection by Walker and/or return the defective part to Walker, transportation charges prepaid. All parts and components of the Walker Mower are covered by this warranty **except** the following components which are warranted separately by their respective manufacturers:

Rehiko/Kohler Engine

The available warranties covering these items are furnished with each mower. Walker does not assume any warranty obligation, liability or modification for these items, which are covered exclusively by the stated warranty of the respective manufacturers noted above.

The Fulbat battery comes with a one (1) year warranty from the date of sale to the original retail purchaser. Warranty claims for the battery are administered through Walker Manufacturing.

\* Hydro-Gear offers a two (2) year or 2000 hour (whichever comes first) warranty for the ZT-3100 Hydrostatic transaxle which covers full cost of replacement up to 1000 hours of use, and after 1000 hours warranty coverage is prorated against 2000 hours. This warranty is administered through Walker Manufacturing.

## 2. WHAT THIS WARRANTY DOES NOT COVER:

- A. This warranty does not cover defects caused by depreciation or damage caused by normal wear, accidents, improper maintenance, improper use or abuse of the product, alterations, or failure to follow the instructions contained in the Owner's Manual for operation and maintenance.
- B. The customer shall pay any charges for making service calls and/or for transporting the mower to and from the place where the inspection and/or warranty work is performed.

## 3. HOW TO OBTAIN SERVICE UNDER THIS WARRANTY:

Warranty service can be arranged by contacting the dealer where you purchased the mower or by contacting Walker Manufacturing Company, 5925 East Harmony Road, Ft. Collins, CO 80528. Proof of the date of purchase may be required to verify warranty coverage.

## 4. WARRANTY LIMITATION:

- A. **THERE IS NO OTHER EXPRESS WARRANTY. ANY WARRANTY THAT MAY BE IMPLIED FROM THIS PURCHASE INCLUDING MERCHANTABILITY AND FITNESS FOR A PARTICULAR PURPOSE IS HEREBY LIMITED TO THE DURATION OF THIS WARRANTY AND TO THE EXTENT PERMITTED BY LAW ANY AND ALL IMPLIED WARRANTIES ARE EXCLUDED.** Some states do not allow limitations on how long an implied warranty lasts, so the above limitations may not apply to you.
- B. **WALKER WILL NOT BE LIABLE FOR ANY INCIDENTAL, CONSEQUENTIAL, OR SPECIAL DAMAGES AND/OR EXPENSES IN CONNECTION WITH THE PURCHASE OR USE OF THE MOWER.** Some states do not allow the exclusion or limitation of incidental or consequential damages, so the above limitation(s) or exclusion(s) may not apply to you.
- C. Only the warranty expressed in this limited warranty shall apply and no dealer, distributor, or individual is authorized to amend, modify, or extend this warranty in any way. Accordingly, additional statements such as dealer advertising or presentations, whether oral or written, do not constitute warranties by Walker, and should not be relied upon.
- D. This warranty gives you specific legal rights, and you may also have other rights which vary from state to state.



**WALKER**

**WALKER MFG. CO. • 5925 E. HARMONY ROAD, FORT COLLINS, CO 80528 • (970) 221-5614**  
**FORM NO. 040126      PRINTED IN USA      [www.walker.com](http://www.walker.com)      ©2026 WALKER MFG. CO**