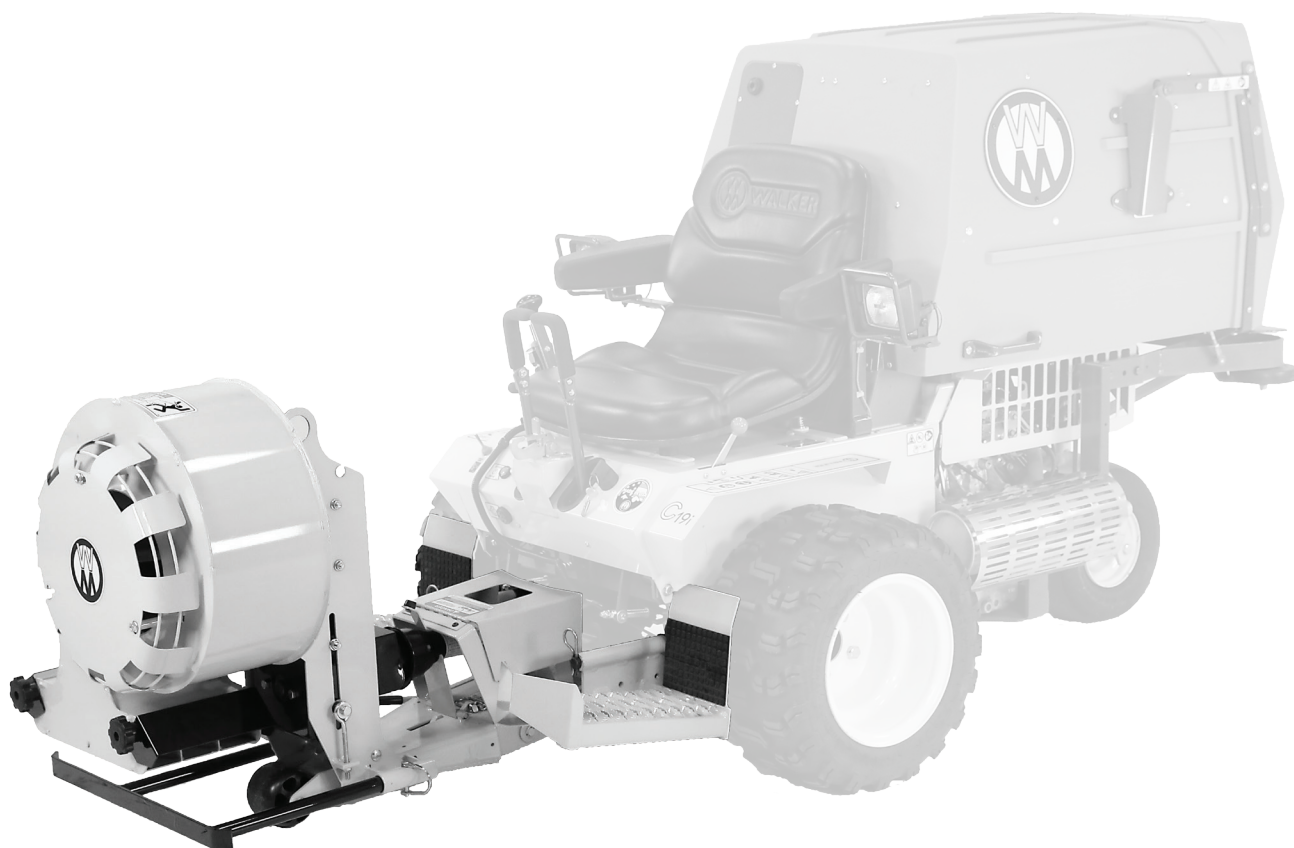




## **H14: Debris Blower**

# **Operator's Manual**

Assembly, Attaching, Removing, Operation and Maintenance  
H14 compatible with Models C, D, T, S



### **Please Read and Save These Instructions**

For Safety, Read All Assembly and Operation Instructions  
Prior to Operating Attachment

Beginning S/N: 2806404

Effective Date: 1/23/09

P/N: 6680-3



## Foreword

**Thank you.** . .for purchasing a Walker Debris Blower. Every effort has been made to provide you with the most reliable machine on the market, and we are sure you will be among our many satisfied customers. If for any reason this product does not perform to your expectations, please contact your local dealer. Every customer is important to us. Your satisfaction is our goal.

**Please.** . .read this manual thoroughly! Before you operate your machine, please read this entire manual. Some of the information is crucial for proper operation - it will help protect your investment and ensure that the machine performs to your satisfaction. Some of the information is important to your safety, and must be read and understood to help prevent possible injury to the operator or others. If anything in this manual is confusing or hard to understand, please contact your local authorized dealer or call our service department, at (970) 221-5614, for clarification before operating or servicing this machine.

**All shields and guards must be in place for the proper and safe operation of this machine.** Where they are shown removed in this manual, it is for illustration purposes only. **Do not operate this machine unless all shields and guards are in place.**

Walker Mfg. Co. is continually striving to improve the design and performance of its products. We reserve the right to make changes in specifications and design without thereby incurring any obligation relative to previously manufactured products.

Sincerely,  
WALKER MANUFACTURING COMPANY

Bob Walker, President

## Table of Contents:

Safety Instructions _____	1
Specifications _____	5
Decals _____	6
Attaching Debris Blower _____	7
Operation _____	10
Removing Debris Blower _____	13
Maintenance _____	14
Parts List/Diagram _____	17
Warranty _____	20

## HIGHLIGHTED INFORMATION

Walker Manufacturing recommends that any service requiring special training or tools be performed by an authorized Walker Mower Dealer. There are several general practices to be aware of in the area of safety. Most accidents associated with the operation or maintenance of a Walker product are caused by disregarding basic safety precautions or specific warnings. Such accidents, in most cases, can be prevented by being aware of the dangers present. Information of special importance has been highlighted in bold type.

# Safety Instructions

## BEFORE OPERATING

1. **Read and understand the contents of this Operator's Manual before operating the machine.** Become thoroughly familiar with all controls and how to stop the machine and disengage the controls quickly. Replacement Operator's Manuals are available by sending the model and serial number to the address below, or at our website [www.walkermowers.com](http://www.walkermowers.com).  
**Walker Manufacturing Company**  
5925 E. Harmony Road  
Fort Collins, CO. 80528
2. **Never allow children to operate or give rides on the machine.** Do not allow adults to operate without proper instruction.
3. Do not allow anyone other than the operator on the machine.
4. Keep everyone, especially children and pets, a safe distance away from the area being cleaned. **Do not operate with bystanders in the area.**
5. Do not operate the machine wearing sneakers, tennis shoes, or similar lightweight footwear. **Wear substantial protective footwear that will improve footing on slippery surfaces.**
6. Do not wear loose fitting clothing that could get caught in moving parts. **Always wear adequate protective clothing** including long pants. Wearing safety glasses, safety shoes, and a helmet is advisable and required by some local ordinances and insurance regulations.
7. Prolonged exposure to loud noise can cause impairment or loss of hearing. **Operator hearing protection is recommended.** Wear a suitable hearing protective device such as earmuffs or earplugs.
8. **Keep all protective shields and safety devices in place.** If a protective shield, safety device, or decal is damaged, unusable, or missing, repair or replace it before operating the machine.

9. **Be sure any interlock switches are functioning correctly** so the engine cannot be started unless the Forward Speed Control (FSC) lever is in the **NEUTRAL** position and the PTO clutch is in the **DISENGAGED** position. Also, the engine should stop if the operator lifts off the seat with the PTO clutch in the **ENGAGED** position.
11. **Never attempt to make any adjustments while the engine is running**, except where specifically instructed to do so.
12. **Handle gasoline or diesel fuel with care.** Gasoline is highly flammable and its vapors are explosive:
  - a. Use an approved fuel container.
  - b. Never add fuel to a running engine or hot engine (allow hot engine to cool several minutes).
  - c. Keep matches, cigarettes, cigars, pipes, open flames, or sparks away from the fuel tank and fuel container.
  - d. Always fill the fuel tank outdoors using care. Fill to about one inch from the top of the tank. Use a funnel or spout to prevent spilling.
  - e. Replace the machine fuel cap and container cap securely and clean up any spilled fuel before starting the engine.

## OPERATING

<p><b>NOTE:</b> Refer to your model's Operator's Manual for safety instructions for operating the tractor.</p>
--

1. Operate the machine only in daylight or in good artificial light with good visibility of areas being cleaned.
2. Sit on the seat when starting the engine and operating the machine. Keep feet on footrests at all times when the tractor is moving and/or the implement is operating.
3. An inexperienced operator should **learn to steer (maneuver) the tractor with a slow engine speed before attempting any operating.** Be aware that, with the front mounted implement configuration, the back of the machine swings to the outside during turns.
4. Remember, for an emergency stop, the forward motion of the tractor can always be stopped by pulling the Forward Speed Control (FSC) into the **NEUTRAL-PARK** position.
5. Disengage the PTO clutch and put the FSC in the **NEUTRAL-PARK** position before starting the engine (an ignition interlock switch normally prevents starting of the tractor if these controls are in the **OPERATING** position).
6. **Do not run the engine in a confined area without adequate ventilation.** Exhaust fumes are hazardous and can be deadly.

7. **Do not carry passengers** - maximum seating capacity is one (1) person.
8. Watch out for hazards hidden under debris that could damage the machine while operating.
9. **Avoid sudden starts or stops.** Before backing the machine up, look to the rear to be sure no one is behind the machine. Watch carefully for traffic when crossing or working near roadways.
10. Disengage the PTO clutch when transporting the machine.
11. Do not operate across the face of slopes. Use extreme caution when changing direction on slopes. Do not attempt to clear steep slopes.
12. **Never adjust gauge wheels or skid shoes with the engine running.** Before adjusting height or servicing, disengage the PTO clutch, stop the engine, and remove the ignition key. Wait for all movement to stop before getting off the seat.

**NOTE:** The PTO brake should normally stop drive line rotation within 5 seconds of disengaging the PTO clutch.

13. If the implement strikes a solid object or the machine begins to vibrate abnormally, immediately disengage the PTO clutch, stop the machine, and remove the ignition key. Wait for all moving parts to stop. Disconnect the fuel solenoid wire [diesel engines] or the spark plug wire(s) [gasoline engines] to prevent accidental starting. Thoroughly inspect the implement and repair any damage before restarting the engine and operating the machine. Make sure implement components are in good condition and all bolts are tight.
14. **Do not touch the engine or muffler while the engine is running** or immediately after stopping the engine. These areas may be hot enough to cause serious burns.
15. When leaving the machine unattended, disengage the PTO clutch, stop the engine, and remove the ignition key.

## MAINTENANCE

**NOTE:** Refer to your model's Operator's Manual for proper tractor maintenance procedures.

1. **To prevent accidental starting of the engine** when servicing or adjusting the machine, remove the key from the ignition switch and disconnect the fuel solenoid wire [diesel engines] or the spark plug wire(s) [gasoline engines]

2. **To reduce fire hazards**, keep the engine free of grass, leaves, excessive grease, and dirt.
3. Keep all nuts, bolts, and screws tight **to ensure the machine is in safe, working condition**.
4. **Perform only maintenance instructions described in this manual**. Unauthorized maintenance operations or machine modifications may result in unsafe operating conditions.
5. If the engine must be running to perform a maintenance adjustment, **keep hands, feet and clothing away from moving parts. Do not wear jewelry or loose clothing**.
6. **Always use proper engine service manuals when working on the engine**. Unauthorized maintenance operations or modifications to the engine may result in unsafe operating conditions.
7. Altering the machine in any manner which adversely affects its operation, performance, durability or use **will VOID the warranty** and may cause hazardous conditions.
8. Never attempt to disconnect any safety devices or defeat the purpose of these safety devices.
9. Do not change the engine governor settings or overspeed the engine. The governor has been factory-set for maximum-safe engine operating speed.
10. **Use genuine factory replacement parts**. Substitute parts may result in product malfunction and possible injury to the operator and/or others.

<p><b>IMPORTANT:</b> Keep all applicable manuals immediately accessible to anyone who may operate or service this machine.</p>
--

# Specifications

## DEBRIS BLOWER

Height in (cm)	28-1/2 (72)
Width in (cm)	26 (66)
Length in (cm)	34-3/4 (88)
Overall Length Installed on Tractor in (cm)	102-1/2 (260)
Weight With Female Hitch lb (kg)	130 (59)
Lift	12 Volt DC Electric Ram Linear Actuator, Operated by Toggle Switch Mounted on FSC Lever
Hitch System	Patented Quick Hitch System
Type Blower	13-1/2 in (34 cm) Diameter, 8-blade Aluminum Impeller, Counterclockwise Rotation
Blower Drive	PTO Shaft Driving Blower Wheel
Recommended RPM	3600 RPM (4000 RPM Maximum)
Airflow at 4000 RPM ft <sup>3</sup> /min (m <sup>3</sup> /h)	2000 (3400)
Approximate Required Horsepower hp (kw)	14 (10.4)
Air Velocity mph (km/h)	Mean: 125 (201) Maximum: 160 (257)
Discharge Angle Adjustment	Chute Direction Selection of Left or Right by Angling Arm; Adjustable from Operator Seat
Outlet Area in <sup>2</sup> (cm <sup>2</sup> )	25 (161)

---

**NOTE:** The manufacturer reserves the right to make changes in specifications shown herein at any time without notice or obligation.



# Decals

## Safety Decal: Rotating Driveline

Location: PTO Shield

Part Number: 7822



## Safety Decal: Rotating Driveline

Location: Debris Blower Housing

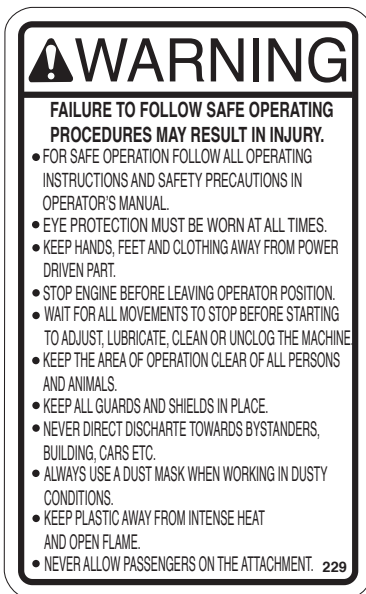
Part Number: 657763



## Safety Decal: Safety Procedures

Location: Debris Blower Housing

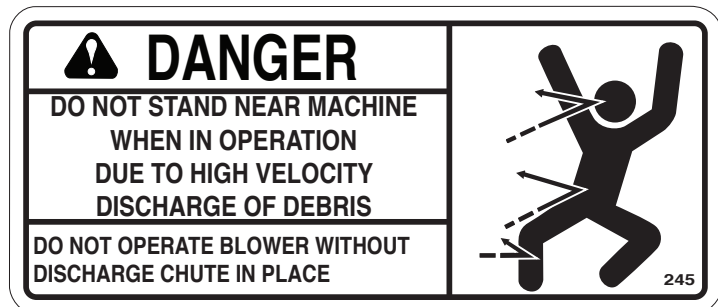
Part Number: 660988



## Safety Decal: Danger High Velocity

Location: Debris Blower Housing

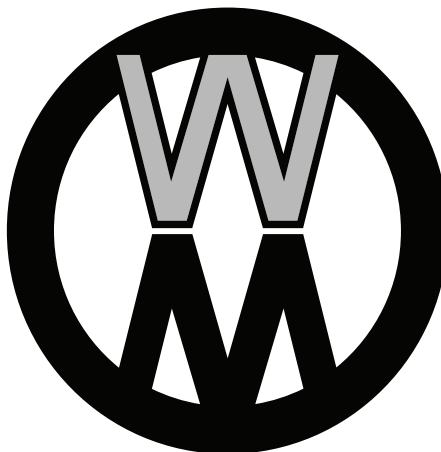
Part Number: 661248



## Decal: Walker Round

Location: Debris Blower Housing

Part Number: 5800-9



# Attaching Debris Blower

The debris blower is shipped completely assembled except for the driveline, which must be connected to the input shaft.

1. Remove the belt guard from the debris blower housing by removing the four (4) carriage bolts securing it to the housing.
2. Thoroughly clean the debris blower input shaft and install a 1/4 x 1/4 x 1-1/4 in. key in the input shaft keyway.
3. Thoroughly clean the inside of the tractor PTO shaft and align the PTO shaft keyway with the key in the input shaft keyway.
4. Secure the PTO shaft to the input shaft with a 1/4 x 2-1/2 in. bolt and nylon locknut. Tighten the locknut and the set screw over the key.
5. Reinstall the belt guard by reversing the removal procedure in step 1.
6. Drive the tractor just in front of the debris blower, making sure the input shaft goes through the male quick hitch and under the PTO cover (figure 1.1). Connect the PTO shaft and input shaft. Insert the male quick hitch section of the implement hitch into the female hitch of the debris blower and lock in place by moving the hitch locking lever to the **LOCKED** position (figure 1.2). Refer to the **Hitch Locking Lever** instructions in the **Operation** section of this manual.

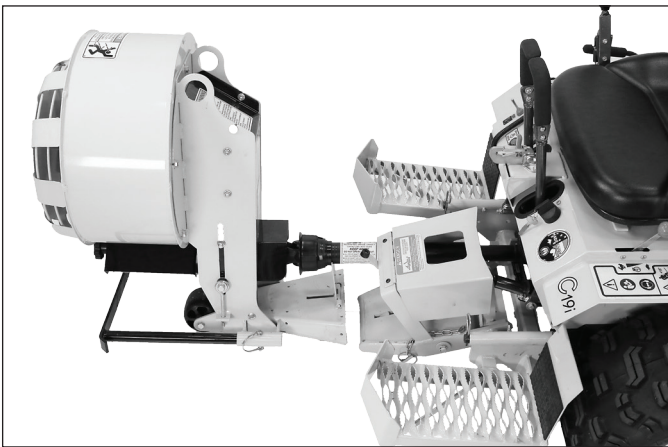


Figure 1.1

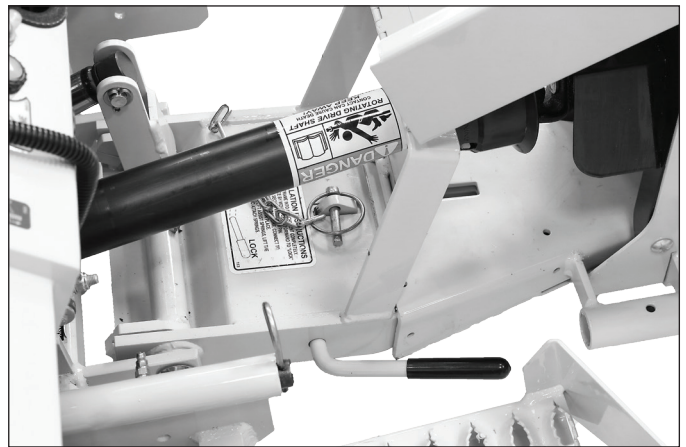


Figure 1.2

7. For GHS (Grass Handling System) equipped Walker tractors, install a blower intake cover in the blower intake tube. The cover “unloads” the blower and seals the intake to effectively eliminate power loss and noise when the blower is not being used. Refer to figure 1.3.

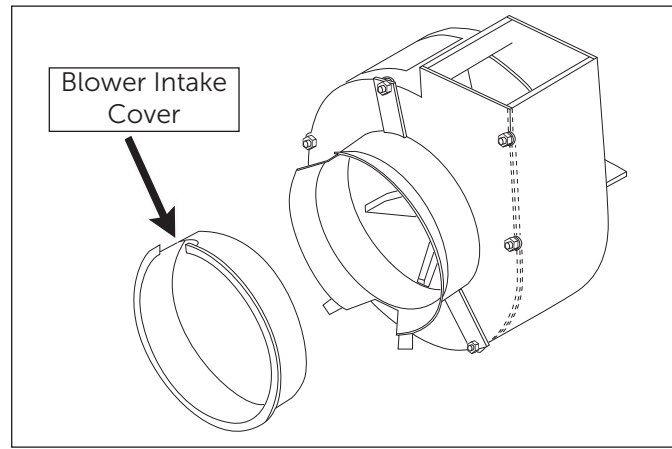


Figure 1.3

8. For stability of the tractor when transporting with the debris blower in raised position, approximately 80 lb (36 kg) of counterweight should be installed on the tail of the tractor. Optional tail weights for the various tractor models are available from your Walker dealer, or a sandbag or similar weight, may be used.

## PREOPERATION CHECKLIST

Before operating any implement for the first time, and as a routine before daily operations, it is important to make sure the machine is properly prepared and ready for operation. The following is a list of items to be checked. For machines with frequent operation, some of these items will not need to be checked every day, but the operator should be aware of the condition of each.

### Tractor

- ☐ CHECK TRACTOR PREOPERATING CHECKLIST  
Refer to the appropriate Tractor Operator's Manual.
- ☐ CHECK OPTIONAL TIRE CHAINS  
Tire chains should always be used when operating the machine in icy conditions. If the tractor is equipped with the optional tire chains, make sure the chains are in good condition and are installed properly.
- ☐ CHECK TRACTOR TAILWEIGHT  
Make sure an 80 lb (36 kg) weight has been installed on rear of tractor.

### Implement Hitch

- ☐ CHECK LIFT SWITCH OPERATION  
Raise and lower the implement hitch to make sure the lift switch and linear actuator operate properly.
- ☐ CHECK HITCH LOCKING LEVER  
Make sure the locking mechanism functions properly. Refer to **Hitch Locking Lever** instructions in the **Operation** section.

## Debris Blower

☐ CHECK DEFLECTORS

Make sure both deflectors are correctly positioned and that the position control knobs are tightened securely.

☐ CHECK GAUGE WHEEL CONDITION

Make sure gauge wheel is in good condition and not damaged.

☐ INSPECT DRIVE BELT

Refer to **ADJUSTMENTS** of **Debris Blower Drive Belt Tension** in Maintenance Instructions section.

☐ CHECK BLOWER FAN

- Make sure the fan is clear of debris.
- Make sure the fan is free to rotate.
- Check that the fan blades are in good condition and not bent.

# Operation

## DEBRIS BLOWER CONTROLS

### Deflector Position Control Knobs

Set the angle of the deflectors according to the desired distance the debris blower should throw. To adjust the deflector angle, loosen the knob, slide the deflector to the required angle, and securely retighten the knob.

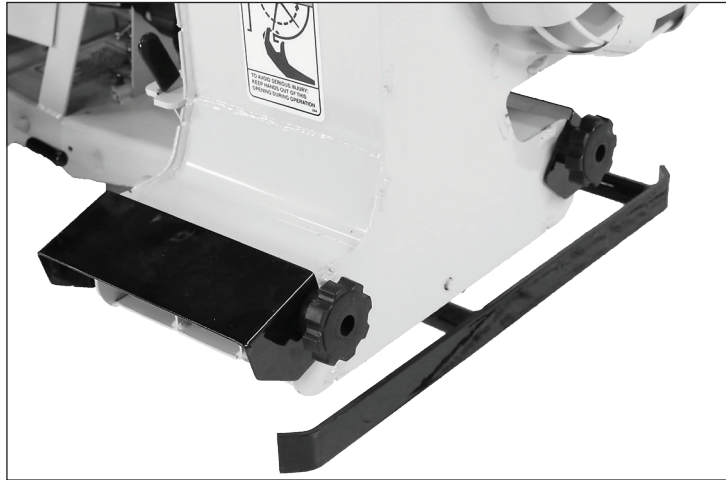


Figure 2.1

### Debris Blower Operation

#### **Caution** ⚠

**Before operating the debris blower, read and understand all Safety Instructions and Operating Instructions.**

Implements are raised or lowered using the toggle switch located on the FSC lever as shown in figure 2.2.

- Move the switch forward to lower the implement.
- Move the switch backward to raise the implement.

#### **Warning** ⚠

**If an implement is installed on the hitch, it must be locked in place before beginning any operation**

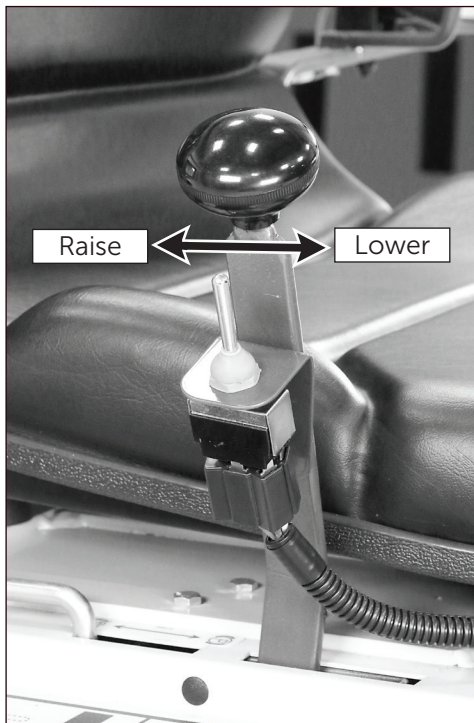


Figure 2.2

## H10: Locking/Removing Implements

- **Locking:** Rotate the hitch lock lever **fully forward** to the **LOCKED** position, and secure the hitch latch with the linch pin.
- **Removing:** Remove the linch pin from the latch and move the hitch lock lever backward to the **UNLOCKED** position.

## Engaging the Debris Blower

1. Set the engine throttle at about 1/3 speed. **DO NOT attempt to engage the PTO clutch at high engine speeds.** This will drastically shorten drive belt life. Use only **moderate engine speed** when engaging the PTO clutch.
2. Pull the PTO clutch lever **SLOWLY** to engage the debris blower.

### Warning

A safety interlock switch (seat switch) will cause the engine to stop if the PTO clutch is engaged and the operator is not in the seat. The function of this switch should be checked by the operator raising off the seat and engaging the PTO clutch; the engine should stop. If the switch is not working, it should be repaired or replaced before operating the machine. **DO NOT** disconnect the safety switches; they are for the operator's protection.

**IMPORTANT:** **DO NOT** engage the PTO clutch with the PTO shaft **disconnected** (the debris blower removed from the tractor).

## Recommendations for Operating the Debris Blower

**IMPORTANT:** Operate the engine at full speed when operating the debris blower, to allow the engine to produce full horsepower and to increase efficiency of the engine cooling system.

- When operating on a slope, **reduce speed and use caution** to start, stop and maneuver. Avoid sharp turns or sudden changes in direction.
- Use optional tire chains or all-terrain tires to improve traction.
- Disengage the PTO clutch to stop the debris blower when driving the machine but not operating the debris blower.
- Avoid damage to property and extra cleaning work by **carefully choosing the direction** to move the debris. Orient the blower away from people and property due to the possibility of thrown objects.
- To momentarily increase traction in case the drive wheels are slipping, use the lift switch to raise the debris blower slightly and transfer extra weight on the drive wheels.

# Removing Debris Blower

## H10 INSTRUCTIONS

1. Park the tractor on a level surface and lower the debris blower.

### Warning

**DO NOT attempt to remove the debris blower with the tractor engine running. Stop the engine and remove the ignition key. Wait for all movement to stop before getting off the seat.**

2. Remove the linchpin from the quick hitch latch and rotate the hitch locking lever fully backward in the **UNLOCKED** position.
3. Start the tractor engine and carefully back the tractor away from the debris blower.

## STORING THE DEBRIS BLOWER

1. Clean the debris blower thoroughly.
2. Repaint all parts from which paint has worn.

**NOTE:** Rustproofing or painting **every year** will prolong the life of the snowblower components and moving parts.

3. When the debris blower is dry, lubricate all moving parts. Apply lubricant liberally to all exposed surfaces to protect against rust.
4. List the replacement parts that will be needed before the next season.
5. Store the debris blower in a dry place.



# Maintenance

## MAINTENANCE INSTRUCTIONS

### Caution

Maintenance procedures requiring special training or tools should be performed by a trained technician.

### MAINTENANCE SCHEDULE CHART - RECOMMENDED SERVICE INTERVALS

Service Item	Daily	25 Hours	Reference Page
Check Gauge Wheel Condition	X		9
Check Deflector Position Control Knobs	X		10
Check Drive Belt Tension and Condition		X	19

Refer to appropriate Tractor Operator's Manual for complete information about tractor maintenance.

## LUBRICATION

Proper lubrication is an important maintenance procedure. It reduces wear and makes the machine quieter and easier to operate.

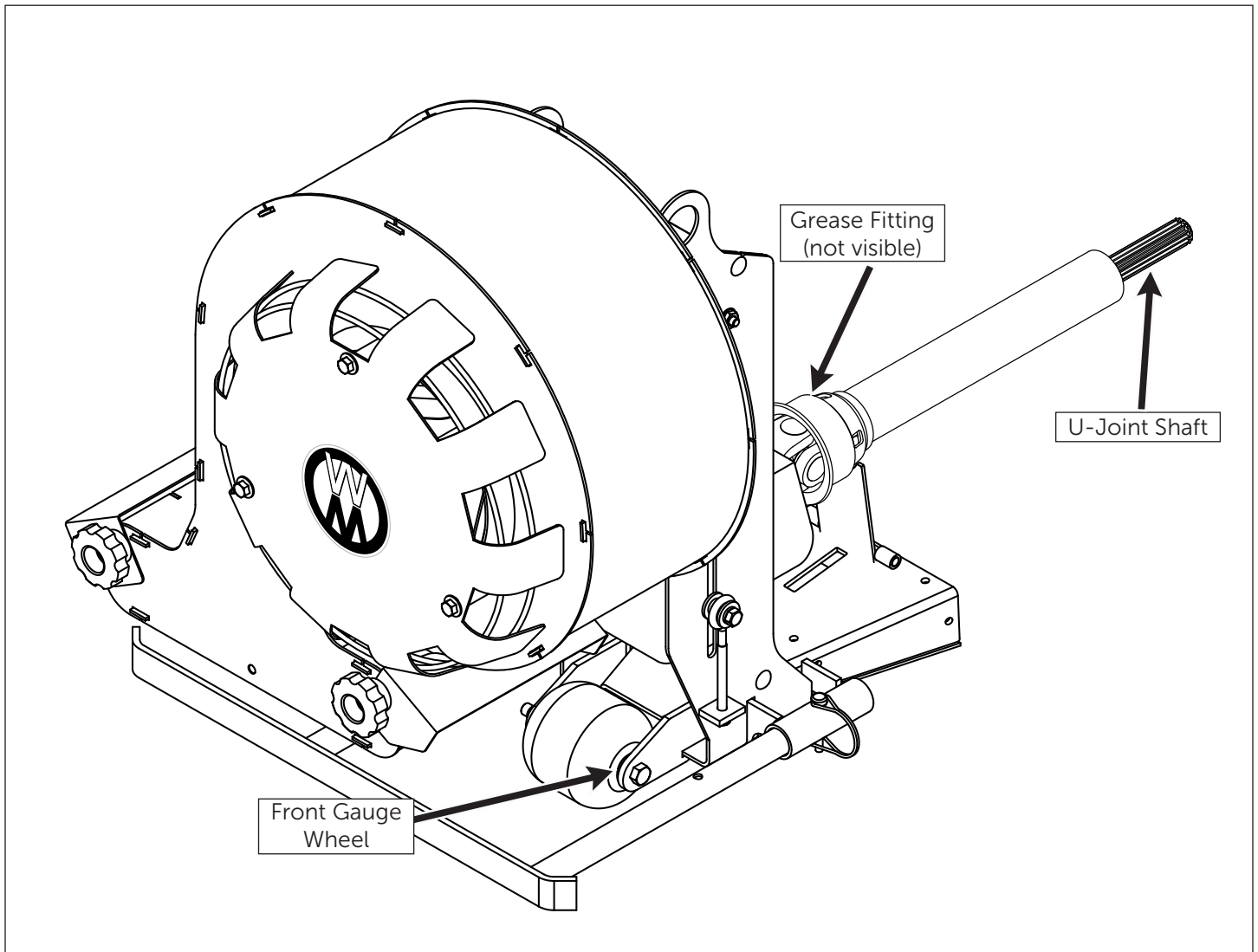
**NOTE:** Tractor and/or Implement Hitch Lubrication Points are not shown here. For Tractor and/or Implement Hitch Lubrication Points, refer to the appropriate **OPERATOR'S MANUAL** or **ILLUSTRATED PARTS MANUAL**.

### Warning

**DO NOT** attempt to lubricate the machine with the tractor engine running. Disengage the PTO clutch, shut off the machine, and remove the ignition key.

Ident No.	Location	Lubrication Type	No. Places
1	Front Gauge Wheel	Grease	1
2	U-Joint Pivot	Grease*	1
3	U-Joint Shaft Assembly (Grease Slide Area)	Grease*	1

\* Grease every twenty-five (25) hours.



## REPAIRING/REPLACING PARTS

### Debris Blower Drive Belt Replacement

1. Remove the belt guard from the debris blower housing by removing the four (4) carriage bolts securing it to the housing.
2. Loosen the adjustment nuts on the lower ends of both eyebolts to release belt tension. Then, remove the four (4) bolts securing the front and rear lower bearing supports to the housing.

3. Remove the two (2) bolts securing the rear upper bearing to the upper bearing support. Remove the four (4) carriage bolts securing the upper bearing support to the housing, and remove the upper bearing support.
4. Lift belt off of upper pulley and remove the complete lower driveshaft and bearing support assembly.
5. Remove the two (2) bolts securing the bearing to the front lower bearing support. With the lower bearing support set aside, remove the belt from the lower pulley.
6. Install the new drive belt. Reverse the removal procedure to reassemble.
7. Adjust the belt tension. Refer to **ADJUSTMENTS** section in this manual. Tighten fasteners securely and reinstall belt guard by reversing the removal process.

## ADJUSTMENTS

### Debris Blower Drive Belt Tension

The drive belt deflection must be 1/8 in. (3 mm) when 6-1/2 to 9 lb (29 to 40 N) is applied midway between the two pulleys.

1. Remove the belt guard from the debris blower housing removing the four (4) carriage bolts securing it to the housing.
2. Loosen the two (2) nuts and two (2) bolts that secure the lower bearing support and turn the adjustment nuts on each side until the required tension is reached (figure 3.1).
3. Retighten the bolts and nuts loosened in step 2 and reinstall the belt cover.

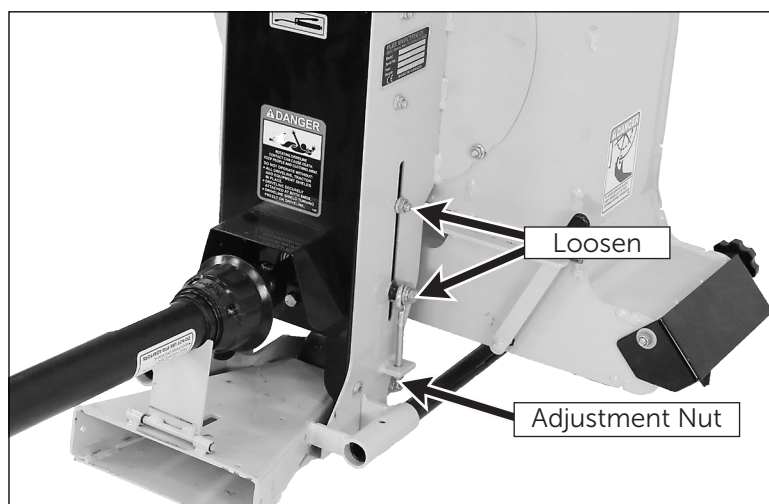


Figure 3.1

# H14 DEBRIS BLOWER

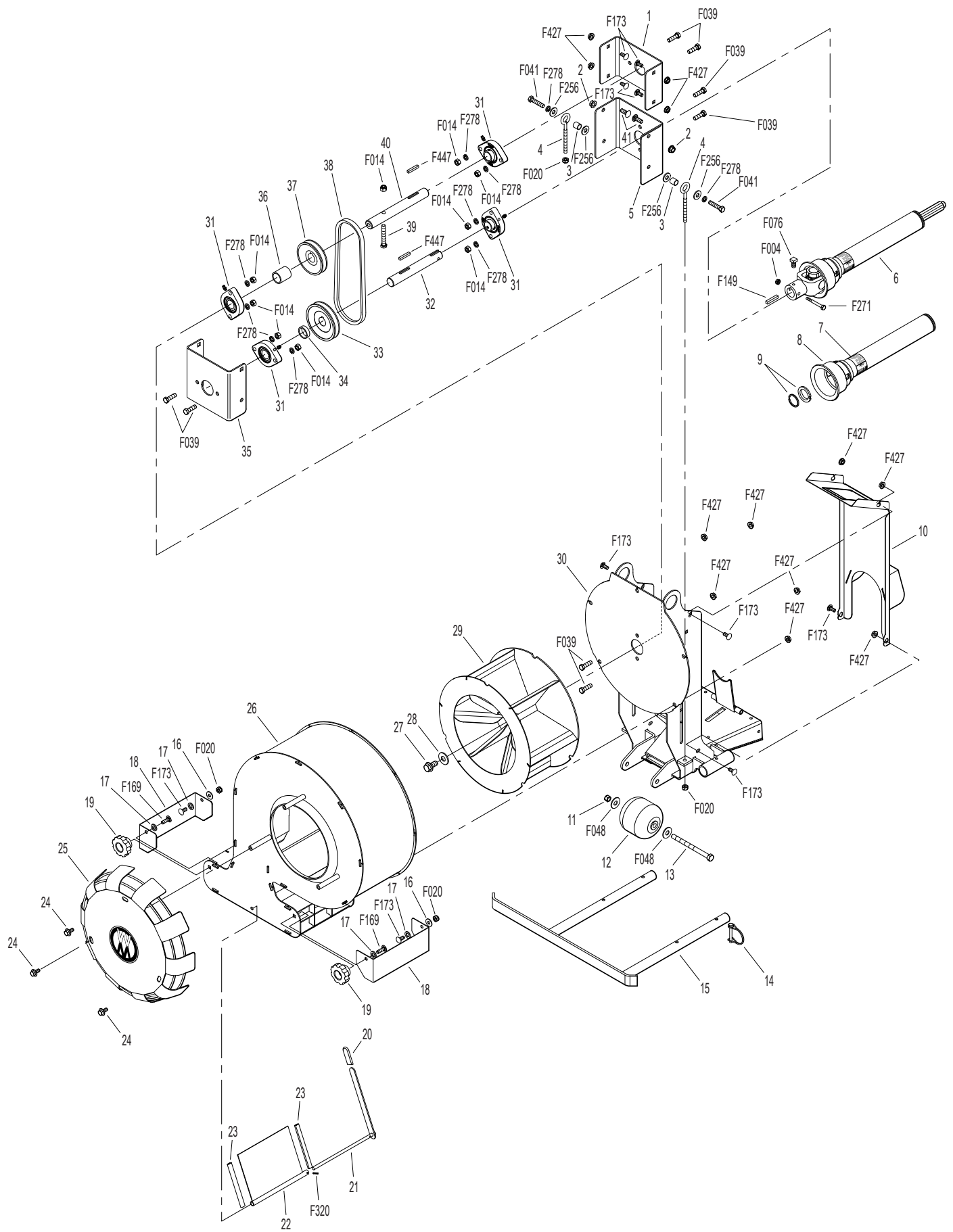
ITEM NO.	WLK PART NO.	RAD PART NO.	DESCRIPTION	NO. REQ'D	ITEM NO.	WLK PART NO.	RAD PART NO.	DESCRIPTION	NO. REQ'D
<b>Debris Blower Components</b>					<b>Fasteners</b>				
1	NS	668745	Upper Bearing Support	1	F004			1/4-20 Keps Nut	1
2	NS	0900035	Nut Serrated Flange 3/8" NC	2	F014			3/8-16 ESNA Nut	9
3	NS	668751	Spacer Bushing	2	F020			5/16-18 ESNA Nut	4
4	I341	656229	5/16-18 x 5 Eye Bolt/Broom	2	F039			3/8-16 x 1-1/4 Hex Bolt	8
5	NS	668744	Lower Bearing Support - Rear	1	F041			3/8-16 x 1-3/4 Hex Bolt	2
6	6671-10		U-Joint Shaft Assembly, Spline (Includes Items # 7-9)	1	F048			1/2 SAE Washer	2
7	I395	657763	Decal, Rotating Driveline	1	F076			3/8-16 x 5/8 SQH Set Screw	1
8	6671-1		PTO Outer Shield	1	F149			1/4 x 1/4 x 1-1/2 Key	1
9	6651-5		Bearing & Retainer Kit	1	F169	0300003		5/16-18 x 1 Carriage Bolt	2
10	NS	668738	Belt Guard	1	F173	0300002		5/16-18 x 3/4 Carriage Bolt	10
11	O/L		Nylon Insert Locknut 7/16" NC	1	F256			7/16 SAE Washer	4
12	NS	3800072	Wheel	1	F271			1/4-20 x 2-1/4 Hex Bolt	1
13	NS	0100252	Bolt Hex 7/16" NC x 5 1/2" GR 5	1	F278			3/8 Split Lock Washer	10
14	NS	1900006	Round Wire Lock Pin 1/4"	1	F320			1/8 x 3/4 Split Spring Pin	1
15	NS	668740	Parking Stand	1	F427	0900036		Nut Serrated Flange 5/16" NC	12
16	I171	658467	11/32 Nylon Washer	2	F447	655379		1/4 x 1/4 x 1 Key	2
17	I172	658468	7/16 Nylon Washer	4	<b>NOTE:</b> Decals are illustrated in greater detail in the Owner's section of this manual. Refer to <b>SAFETY, CONTROL, AND INSTRUCTION DECALS</b> in <b>Safety Instructions</b> , Page 18.				
18	NS	668749	Nozzle Deflector	2	<b>NOTE:</b> All NS items are not sold by Walker Manufacturing.				
19	I170	657309	Knob 5/16" NC	2					
20	NS	4200031	Plastic Hand	1					
21	NS	668742	Angling Arm	1					
22	NS	668741	Angling Deflector	1					
23	NS	668752	Protective Rubber	2					
24	NS	0200083	Bolt Serrated Flange 5/16" NC x 3/4" GR 5	3					
25	NS	668739	Intake Cover	1					
26	NS	668736	CW Impeller Housing	1					
27	NS	0200078	Bolt Serrated Flange 1/2" NC x 1" GR 5	1					
28	O/L		Flat Washer 9/16" Int.	1					
29	NS	668737	CW Impeller	1					
30	NS	668735	Housing	1					
31	NS	4300054	Bearing 1", 2 Holes 10MM, 3" C-C With Grease Fitting and Set Screws	4					
	NS	654106	Grease Fitting 1/4"-28 NF	4					
32	I439	656109	Drive Shaft, 1 x 7-3/8	1					
33	NS	664011	Pulley MA43	1					
34	NS	668748	Spacer Bushing 0.375"	1					
35	NS	668743	Lower Bearing Support - Front	1					
36	NS	668747	Spacer Bushing 1.5"	1					
37	I461	663456	Pulley MA38	1					
38	NS	663380	Belt AX301	1					
39	NS	0100186	Bolt Hex 3/8" NC x 2 1/2" GR 8	1					
40	NS	668746	Driven Shaft	1					
41	NS	0300008	Carriage Bolt 3/8" NC x 1" GR 5	2					

Beginning S/N 2806404

Effective Date 1/23/09

Use only genuine **Walker®** replacement parts

# H14 DEBRIS BLOWER



# OPERATOR'S NOTES

---

# LIMITED WARRANTY FOR WALKER IMPLEMENT HITCH

## 1. What this warranty covers, and for how long:

Walker Manufacturing company will, at its option, repair or replace, without charge, any part covered by this warranty which is found to be defective in material and/or workmanship within one (1) year\* after date of sale to the original retail purchaser unless the product is used for rental purposes, in which case this warranty is limited to ninety (90) days. At Walker's request, customer will make the defective part available for inspection by Walker and/or return the defective part to Walker, transportation charges prepaid.

## 2. What this warranty does not cover:

A. This warranty does not cover defects caused by depreciation or damage caused by normal wear, accidents, improper maintenance, improper use or abuse of the product, alterations, or failure to follow the instructions contained in the Operator's Manual for operation and maintenance.

B. The customer shall pay any charges for making service calls and/or for transporting the attachment to and from the place where the inspection and/or warranty work is performed.

## 3. How to obtain service under this warranty:

Warranty service can be arranged by contacting the dealer where you purchased the machine or by contacting Walker Manufacturing Company, 5925 East Harmony Road, Ft. Collins, CO 80528. Proof of the date of purchase may be required to verify warranty coverage.

## 4. Warranty limitation:

**A. THERE IS NO OTHER EXPRESS WARRANTY. ANY WARRANTY THAT MAY BE IMPLIED FROM THIS PURCHASE INCLUDING MERCHANTABILITY AND FITNESS FOR A PARTICULAR PURPOSE IS HEREBY LIMITED TO THE DURATION OF THIS WARRANTY AND TO THE EXTENT PERMITTED BY LAW ANY AND ALL IMPLIED WARRANTIES ARE EXCLUDED.** Some states do not allow limitations on how long an implied warranty lasts, so the above limitations may not apply to you.

**B. WALKER WILL NOT BE LIABLE FOR ANY INCIDENTAL, CONSEQUENTIAL, OR SPECIAL DAMAGES AND/OR EXPENSES IN CONNECTION WITH THE PURCHASE OR USE OF THE MACHINE.** Some states do not allow the exclusion or limitation of incidental or consequential damages, so the above limitation(s) or exclusion(s) may not apply to you.

C. Only the warranty expressed in this limited warranty shall apply and no dealer, distributor, or individual is authorized to amend, modify, or extend this warranty in any way. Accordingly, additional statements such as dealer advertising or presentations, whether oral or written, do not constitute warranties by Walker, and should not be relied upon.

D. This warranty gives you specific legal rights, and you may also have other rights which vary from state to state.



**WALKER**

**WALKER MFG. CO. 5925 HARMONY ROAD, FORT COLLINS, CO. 80528 - (970)221-5614**  
FORM NO. 012916 PRINTED IN USA